

National Mental Health Benchmarking Project

An Australian Government funded initiative



Court Liaison BAR CHARTS

Forensic Mental Health Services Forum

Version 1.2

Australian Mental Health Outcomes and Classification Network

Forum - 29 - 30 April 2008



AMHOCN

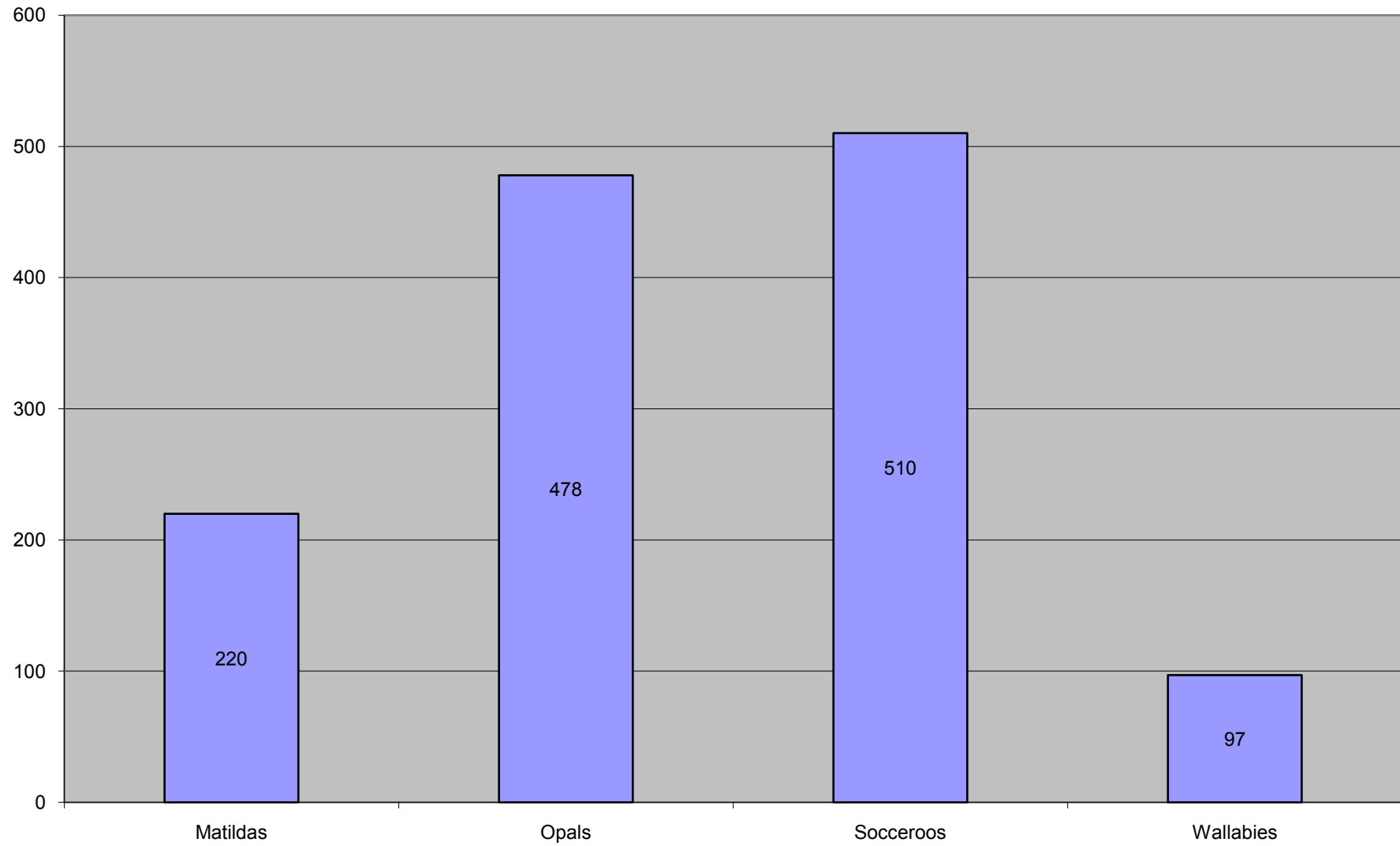
"Sharing Information to
Improve Outcomes"

Variable	Clarification
1. Gender	
Male	
Female	
Missing	
2. Age	
Missing	
3. Ethnicity	
ATSI	Aboriginal and Torres Straight Islander
CALD	Cultural and Linguistically Diverse Background. A person is
Other	
Missing	
4. Diagnosis	
F00-F09 Organic, including symptomatic, mental disorders	ICD Diagnostic Group.
F10- F19 Mental and Behavioural Disorders due to psychoactive	Principal diagnosis identified by clinician as a result of current
F20-29 Schizophrenia, Schizotypal and Delusional Disorders	
F30-39 Mood Disorders	NOTE: Z and other codes are aggregated as “other” .
F40-49 Stress Related Disorders	
F60-69 Adult Personality Disorders	
F70-79 Mental Retardation	
F99 Mental Disorder Not Otherwise Specified	
99.2 Mental Health Diagnosis Not Applicable	
Other	
Missing	

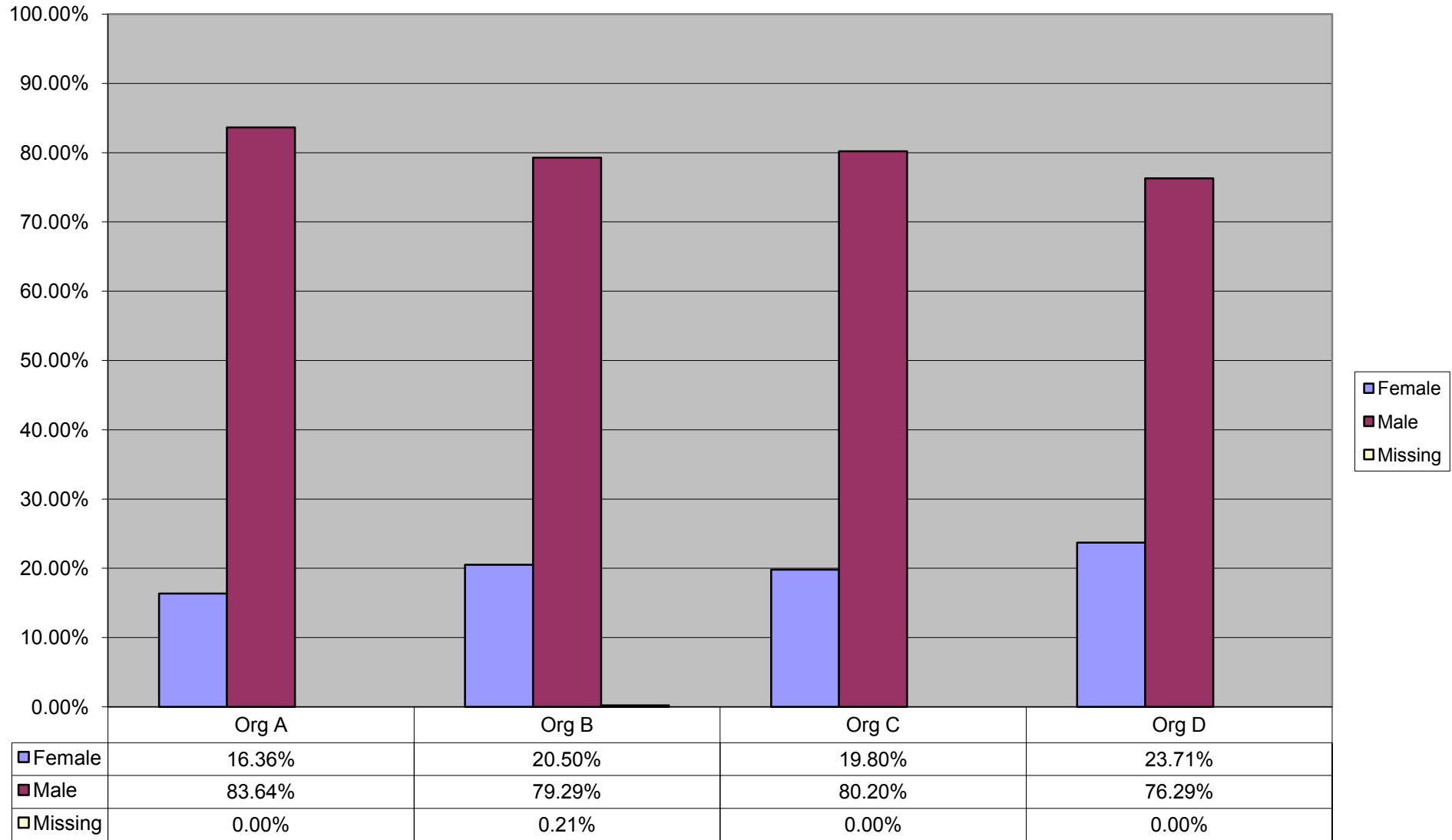
5. Recommendation by court liaison	Identifies principle recommendation provided to magistrate
Refer to Psychiatric Care: Inpatient	Admission to public sector overnight psychiatric inpatient care
Refer to Psychiatric Care: Community	Provision of psychiatric services by ambulatory mental health services
D&A	Provision of outpatient or inpatient drug and alcohol services
Other (Salvation Army, NGO)	Services provide by all other government and non-government services
Referral to services for people with Developmental Disability	Services are provided by specialist developmental disability services.
No recommendations	No mental health issues, no psychiatric care required
Missing	
Activity of Court liaison	Identifies activities of court liaison staff. May be different to
Inform Prison Mental Health Service	Court Liaison contacts prison mental health services to inform of
Psychiatric Care: Inpatient	Admission to public sector overnight psychiatric inpatient care
Psychiatric Care: Community	Provision of psychiatric services by ambulatory mental health services
D&A	Provision of outpatient or inpatient drug and alcohol services
Referral to services for people with Developmental Disability	Services are provided by specialist developmental disability services.
Other (Salvation Army, NGO)	Services provide by all other government and non-government services
No recommendations	No mental health issues, no psychiatric care required
Missing	
6. Magistrates decision, Referral	Identifies magistrates decisions and associated referrals. May be
Prison	Incarceration
Psychiatric Care: Inpatient	Admission to public sector overnight psychiatric inpatient care
Psychiatric Care: Community	Provision of psychiatric services by ambulatory mental health services
D&A	Provision of outpatient or inpatient drug and alcohol services
Referral to services for people with Developmental Disability	Services are provided by specialist developmental disability services.
Other (Salvation Army/NGO)	Services provide by all other government and non-government services
No referral	No recommendations
Missing	

7. Source of Referral	
Self	Identifies principal source of referral
Family	
Mental Health Providers custodial (GP's, Psychologists, Psychiatrists,	
Mental Health Providers non custodial	
Police	
Legal Representative	Corrections Staff: DCS staff is responsible for detention of persons
Court Staff (sheriff e.t.c)	
Corrections Staff	
Magistrate	
Court Liaison Staff	
Other	
Missing	
8. Access	
Not in custody	Not in custody
Arrestee	Presented to magistrate by police
Remandee	Presented to magistrate while detained
Missing Data	
9. Current Offence (Most serious of current charge)	
Missing	Identifies most serious current offence currently being considered
Homicide and attempted homicide	
Sexual related offences	
Unlawful break and enter, burglary	
Property damage	
Offences against justice procedures, Govt & Security	
Acts intended to cause injury	
Robbery, extortion related offences	
Theft	
Road traffic and motor vehicle regulatory offences	
Other (<i>Specify</i>)	

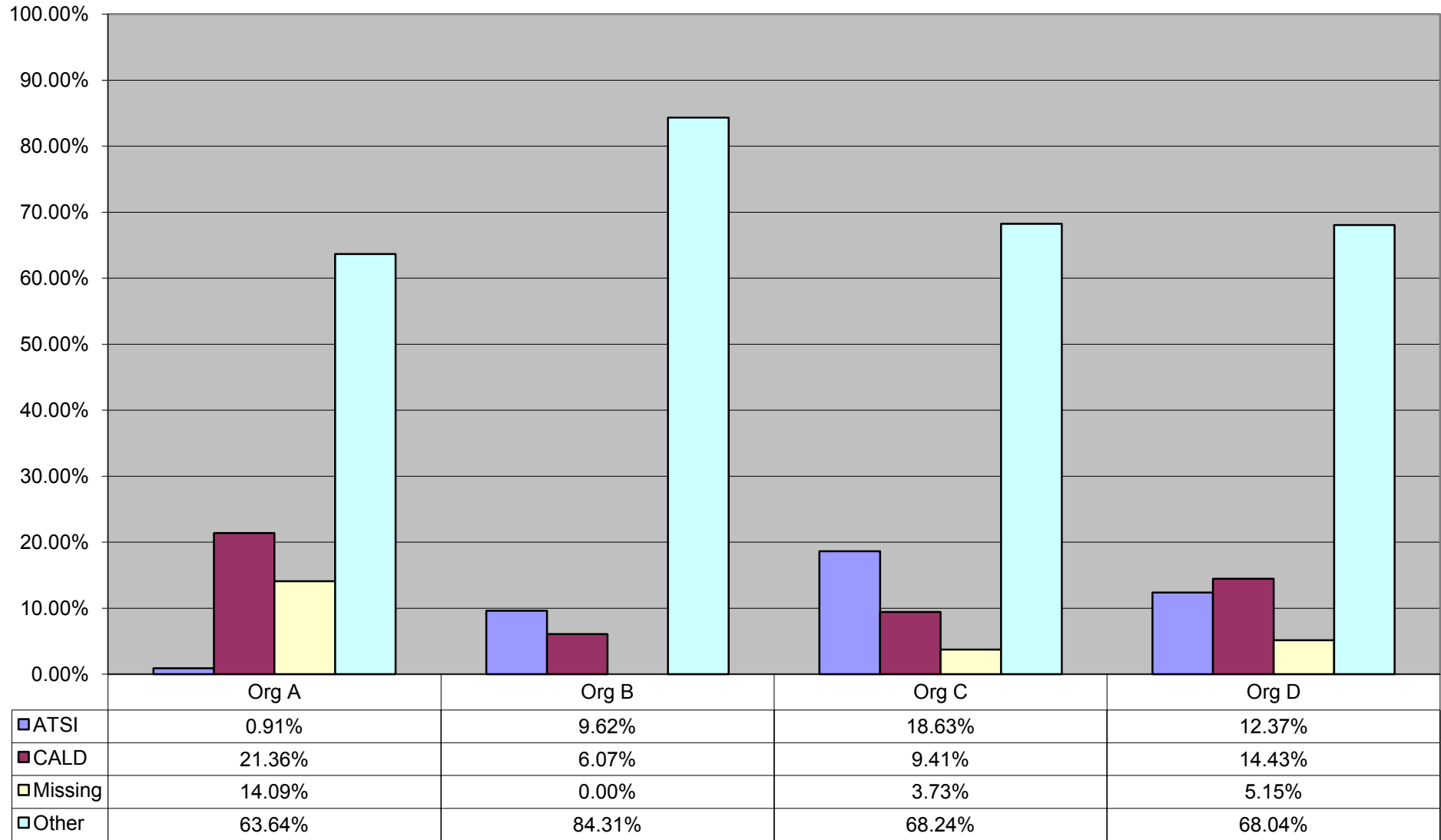
Count of Submitted Records



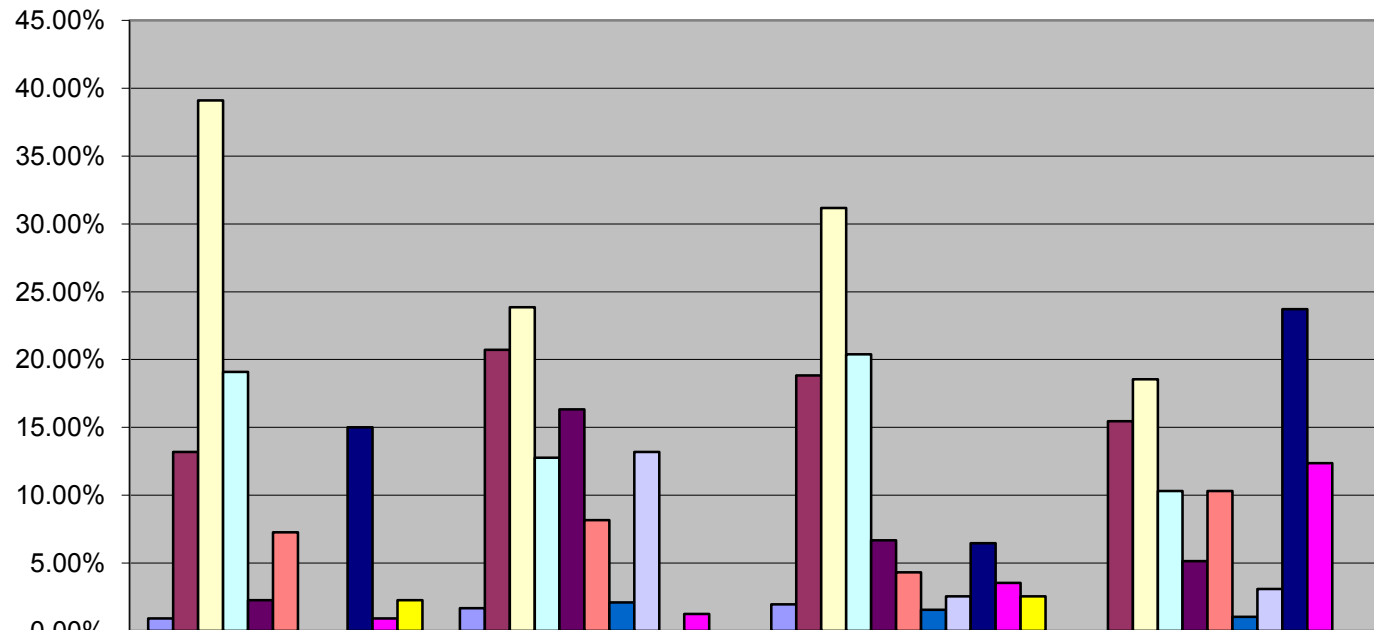
Gender



Ethnicity

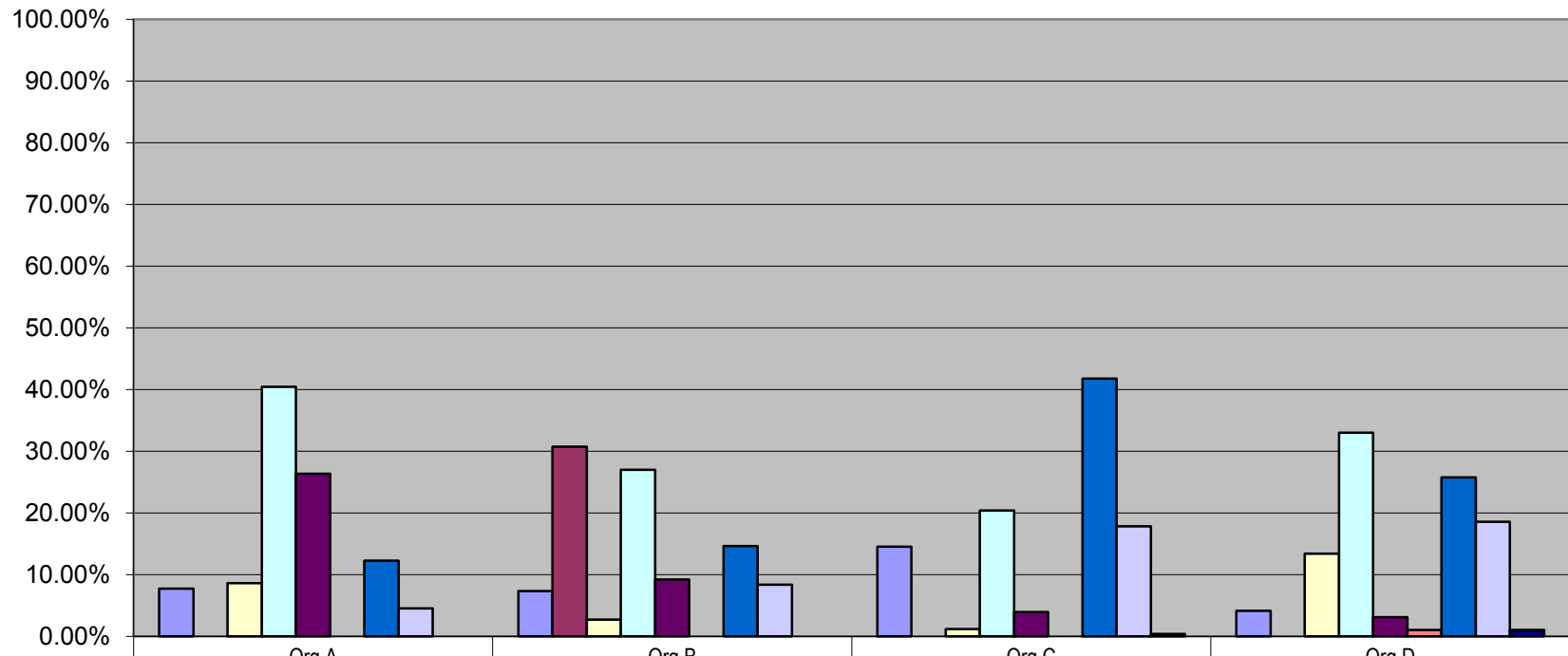


Diagnosis



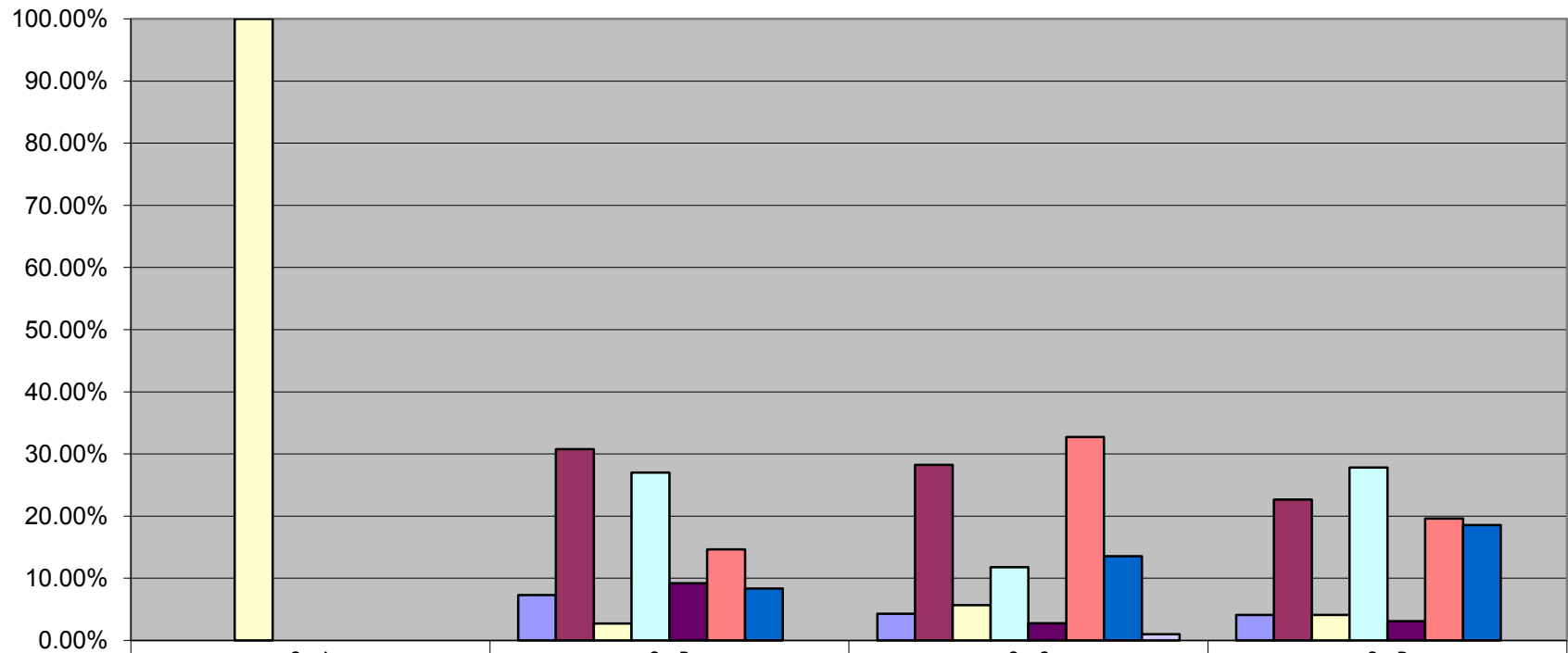
	Org A	Org B	Org C	Org D
■ F00-F09 Organic, including symptomatic, mental disorders	0.91%	1.67%	1.96%	0.00%
■ F10- F19 Mental and Behavioural Disorders due to psychoactive substance abuse	13.18%	20.71%	18.82%	15.46%
□ F20-29 Schizophrenia, Schizotypal and Delusional Disorders	39.09%	23.85%	31.18%	18.56%
□ F30-39 Mood Disorders	19.09%	12.76%	20.39%	10.31%
■ F40-49 Stress Related Disorders	2.27%	16.32%	6.67%	5.15%
■ F60-69 Adult Personality Disorders	7.27%	8.16%	4.31%	10.31%
■ F70-79 Mental Retardation	0.00%	2.09%	1.57%	1.03%
□ F99 Mental Disorder Not Otherwise Specified	0.00%	13.18%	2.55%	3.09%
■ F99.2 Mental Health Diagnosis Not Applicable	15.00%	0.00%	6.47%	23.71%
■ Missing	0.91%	1.26%	3.53%	12.37%
■ Other	2.27%	0.00%	2.55%	0.00%

Recommendations



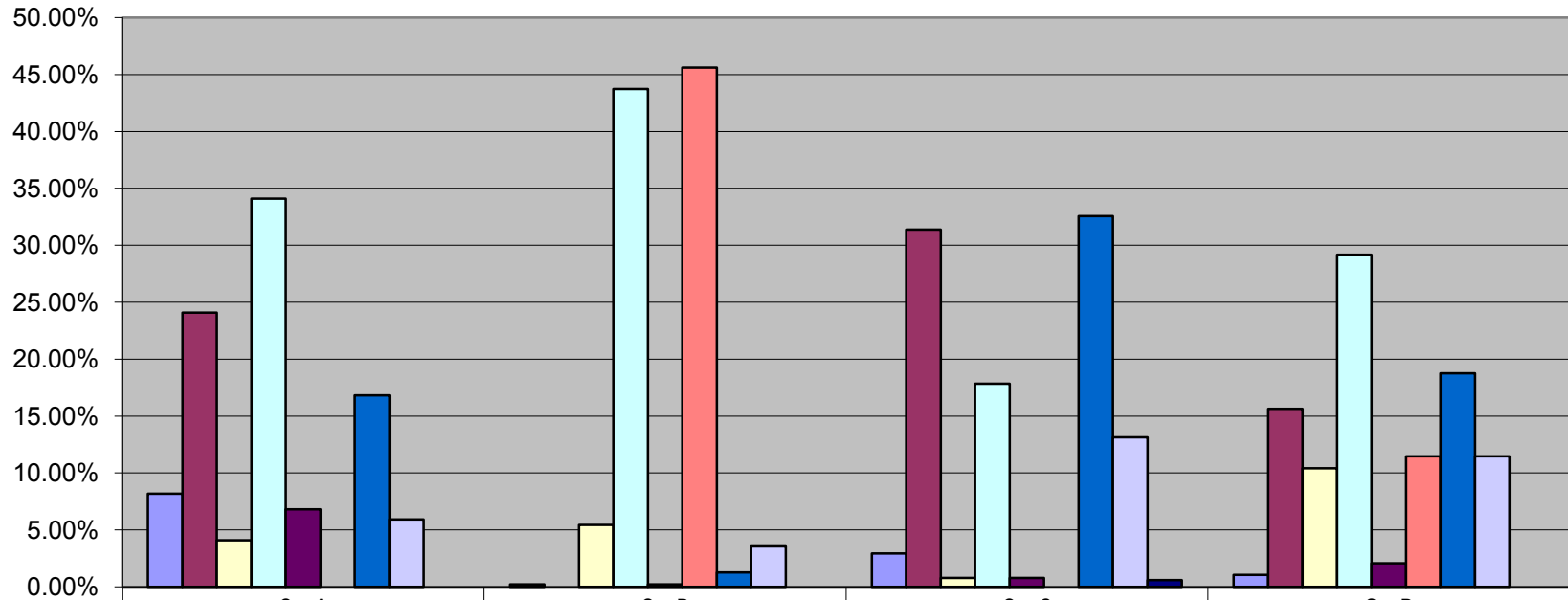
	Org A	Org B	Org C	Org D
D&A	7.73%	7.32%	14.51%	4.12%
Inform Prison Mental Health Service	0.00%	30.75%	0.00%	0.00%
Missing	8.64%	2.72%	1.18%	13.40%
No recommendations	40.45%	26.99%	20.39%	32.99%
Other (Salvation Army, NGO)	26.36%	9.21%	3.92%	3.09%
Prison	0.00%	0.00%	0.00%	1.03%
Psychiatric: Care Community	12.27%	14.64%	41.76%	25.77%
Psychiatric: Care Inpatient	4.55%	8.37%	17.84%	18.56%
Referral to services for people with Developmental Disability	0.00%	0.00%	0.39%	1.03%

Activity Court Liaison



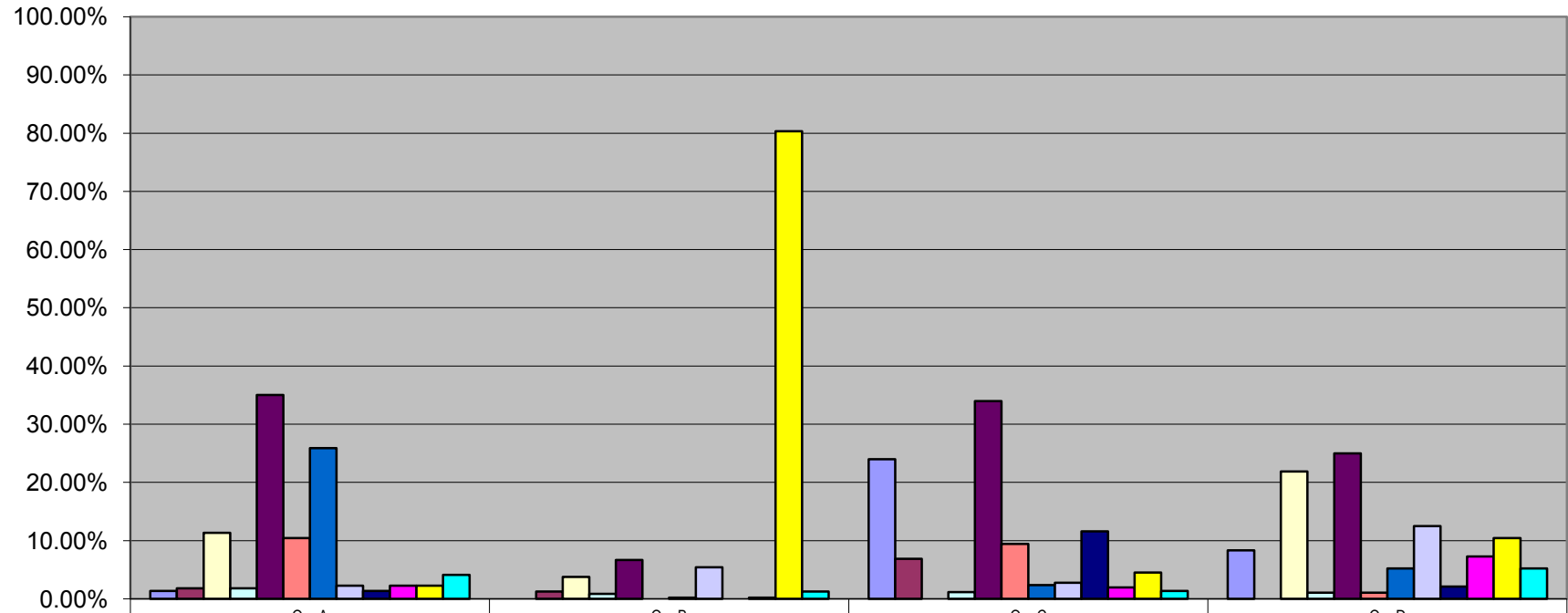
	Org A	Org B	Org C	Org D
D&A	0.00%	7.32%	4.31%	4.12%
Inform Prison Mental Health Service	0.00%	30.75%	28.24%	22.68%
Missing	100.00%	2.72%	5.69%	4.12%
No recommendations	0.00%	26.99%	11.76%	27.84%
Other (Salvation Army, NGO)	0.00%	9.21%	2.75%	3.09%
Refer to Psychiatric Care: Community	0.00%	14.64%	32.75%	19.59%
Refer to Psychiatric Care: Inpatient	0.00%	8.37%	13.53%	18.56%
Referral to services for people with Developmental Disability	0.00%	0.00%	0.98%	0.00%

Magistrate Actions



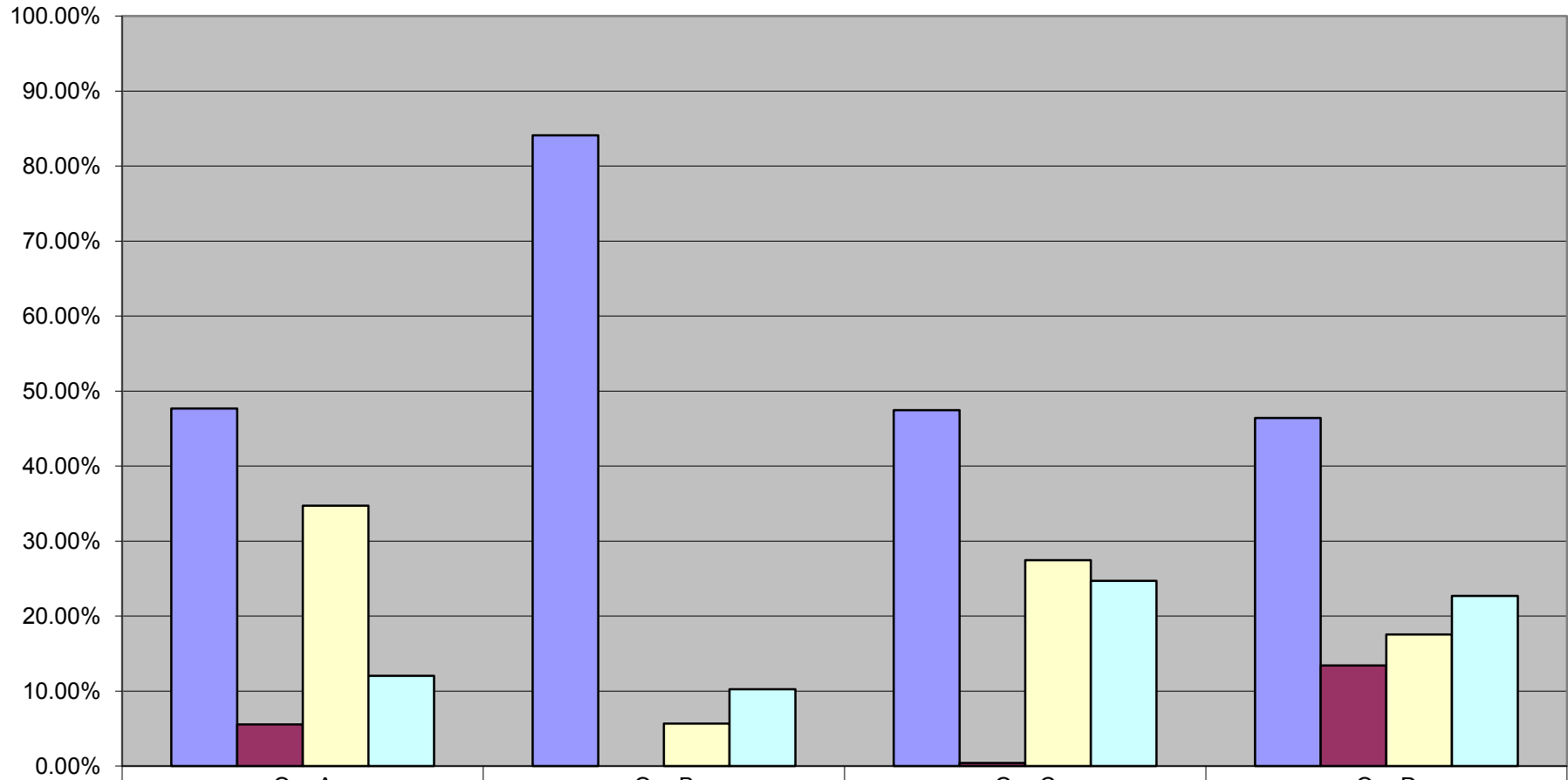
	Org A	Org B	Org C	Org D
■ D&A	8.18%	0.21%	2.94%	1.04%
■ Inform Prison Mental Health Service	24.09%	0.00%	31.37%	15.63%
■ Missing	4.09%	5.44%	0.78%	10.42%
■ No recommendations	34.09%	43.72%	17.84%	29.17%
■ Other (Salvation Army, NGO)	6.82%	0.21%	0.78%	2.08%
■ Prison	0.00%	45.61%	0.00%	11.46%
■ Refer to Psychiatric Care: Community	16.82%	1.26%	32.55%	18.75%
■ Refer to Psychiatric Care: Inpatient	5.91%	3.56%	13.14%	11.46%
■ Referral to services for people with Developmental Disability	0.00%	0.00%	0.59%	0.00%

Source of Referral



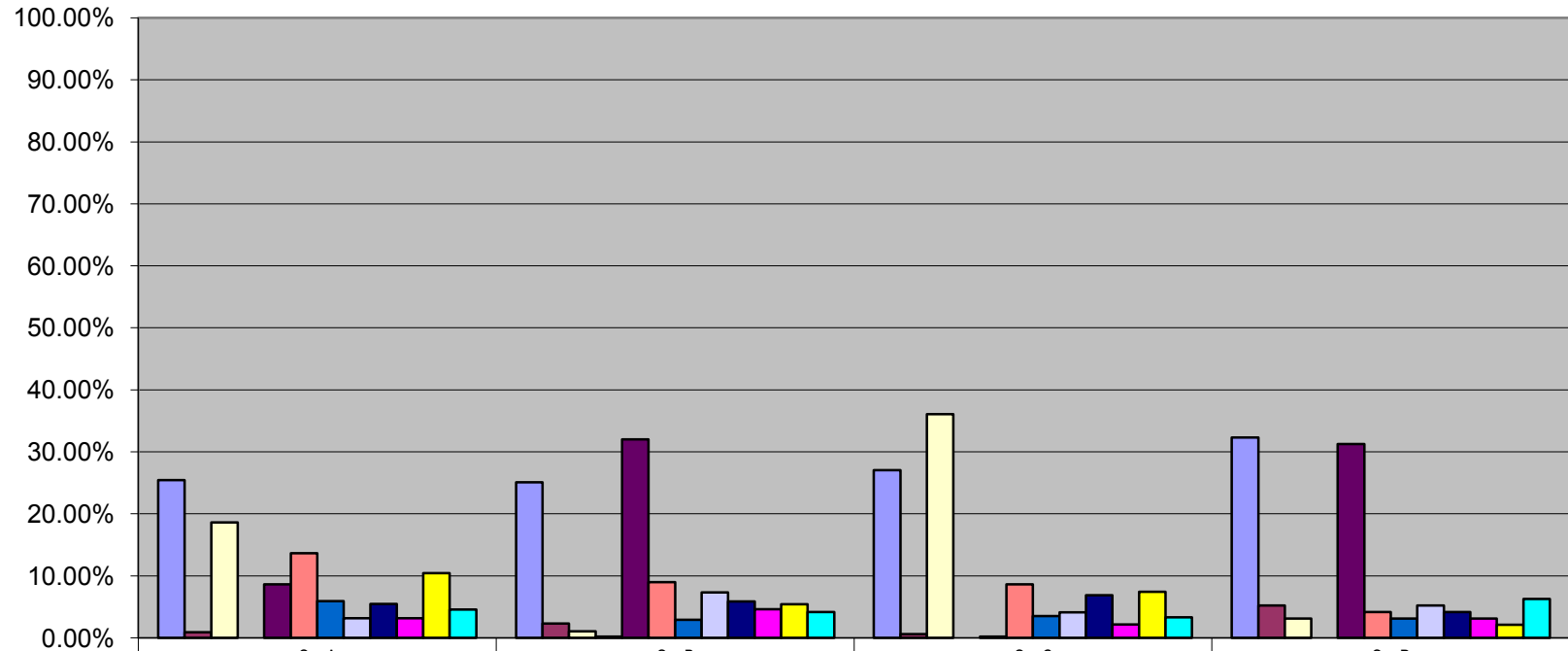
	Org A	Org B	Org C	Org D
Corrections Staff	1.36%	0.00%	23.97%	8.33%
Court Liaison Staff	1.82%	1.26%	6.88%	0.00%
Court Staff (sheriff e.t.c)	11.36%	3.77%	0.00%	21.88%
Family	1.82%	0.84%	1.18%	1.04%
Legal Representative	35.00%	6.69%	33.99%	25.00%
Magistrate	10.45%	0.00%	9.43%	1.04%
Mental Health Providers custodial	25.91%	0.21%	2.36%	5.21%
Mental Health Providers non custodial	2.27%	5.44%	2.75%	12.50%
Missing	1.36%	0.00%	11.59%	2.08%
Other	2.27%	0.21%	1.96%	7.29%
Police	2.27%	80.33%	4.52%	10.42%
Self	4.09%	1.26%	1.38%	5.21%

Access



	Org A	Org B	Org C	Org D
Arrestee	47.69%	84.10%	47.45%	46.39%
Missing	5.56%	0.00%	0.39%	13.40%
Not in custody	34.72%	5.65%	27.45%	17.53%
Remandee	12.04%	10.25%	24.71%	22.68%

Most Serious Offence



	Org A	Org B	Org C	Org D
■ Acts intended to cause injury	25.45%	25.10%	27.06%	32.29%
■ Homicide and attempted homicide	0.91%	2.30%	0.59%	5.21%
■ Missing	18.64%	1.05%	36.08%	3.13%
■ No Charges	0.00%	0.21%	0.00%	0.00%
■ Offences against justice procedures, Govt & Security	8.64%	32.01%	0.20%	31.25%
■ Other (Specify).....	13.64%	9.00%	8.63%	4.17%
■ Property damage	5.91%	2.93%	3.53%	3.13%
■ Road traffic and motor vehicle regulatory offences	3.18%	7.32%	4.12%	5.21%
■ Robbery, extortion related offences	5.45%	5.86%	6.86%	4.17%
■ Sexual related offences	3.18%	4.60%	2.16%	3.13%
■ Theft	10.45%	5.44%	7.45%	2.08%
■ Unlawful break and enter, burglary	4.55%	4.18%	3.33%	6.25%