



A joint Australian,
State and Territory
Government Initiative

National Mental Health Benchmarking Project

An Australian Government funded initiative

COMPARATIVE INDICATORS

3-year time series 2004-05 to 2006-07

Child & Adolescent Mental Health Services Forum

Version 1.0 Summary for Public Release

Australian Mental Health Outcomes and Classification Network
November 2008

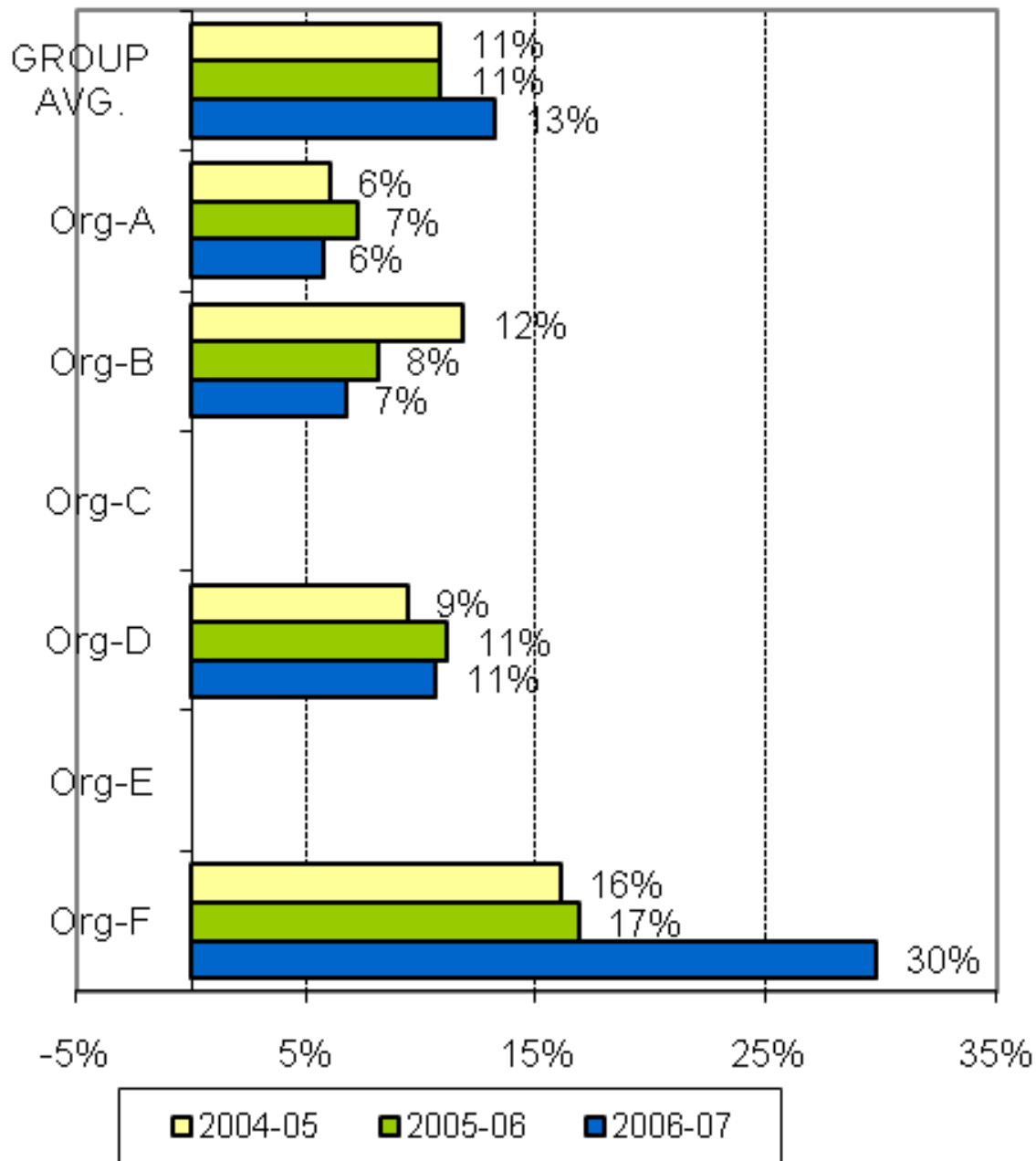


AMHOCN

"Sharing Information to
Improve Outcomes"

This document was prepared from a more detailed version developed for restricted use by organisations participating in the National Mental Health Benchmarking Project. By agreement of all organisations, this version of the indicators has been prepared for wider use and unrestricted distribution. All identifying details and source data tables have been removed from this version.

KPI #1 28-day readmission rate



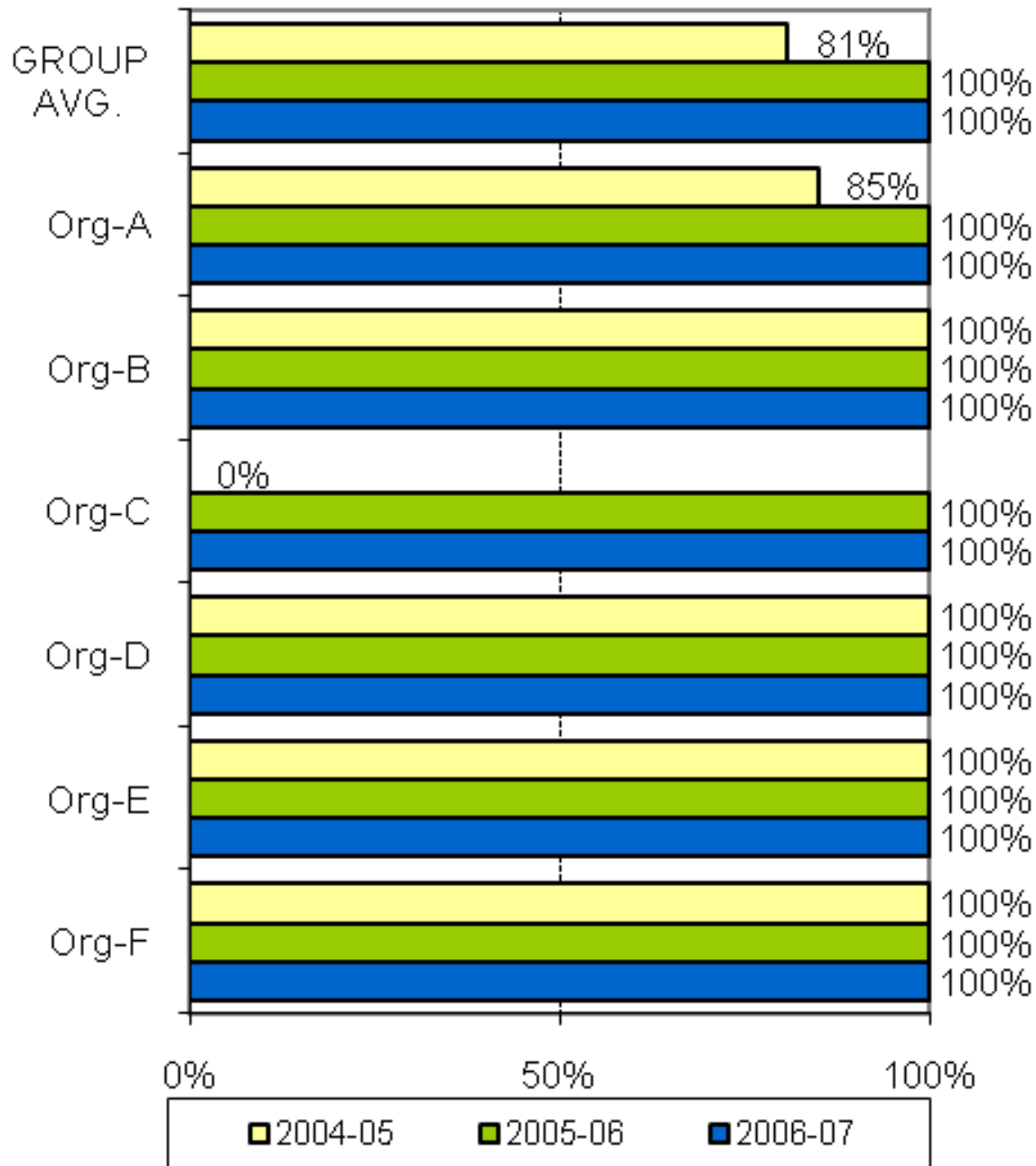
A joint Australian, State and Territory Government Initiative



AMHOCN

"Sharing Information to Improve Outcomes"

KPI #2 National Standards compliance



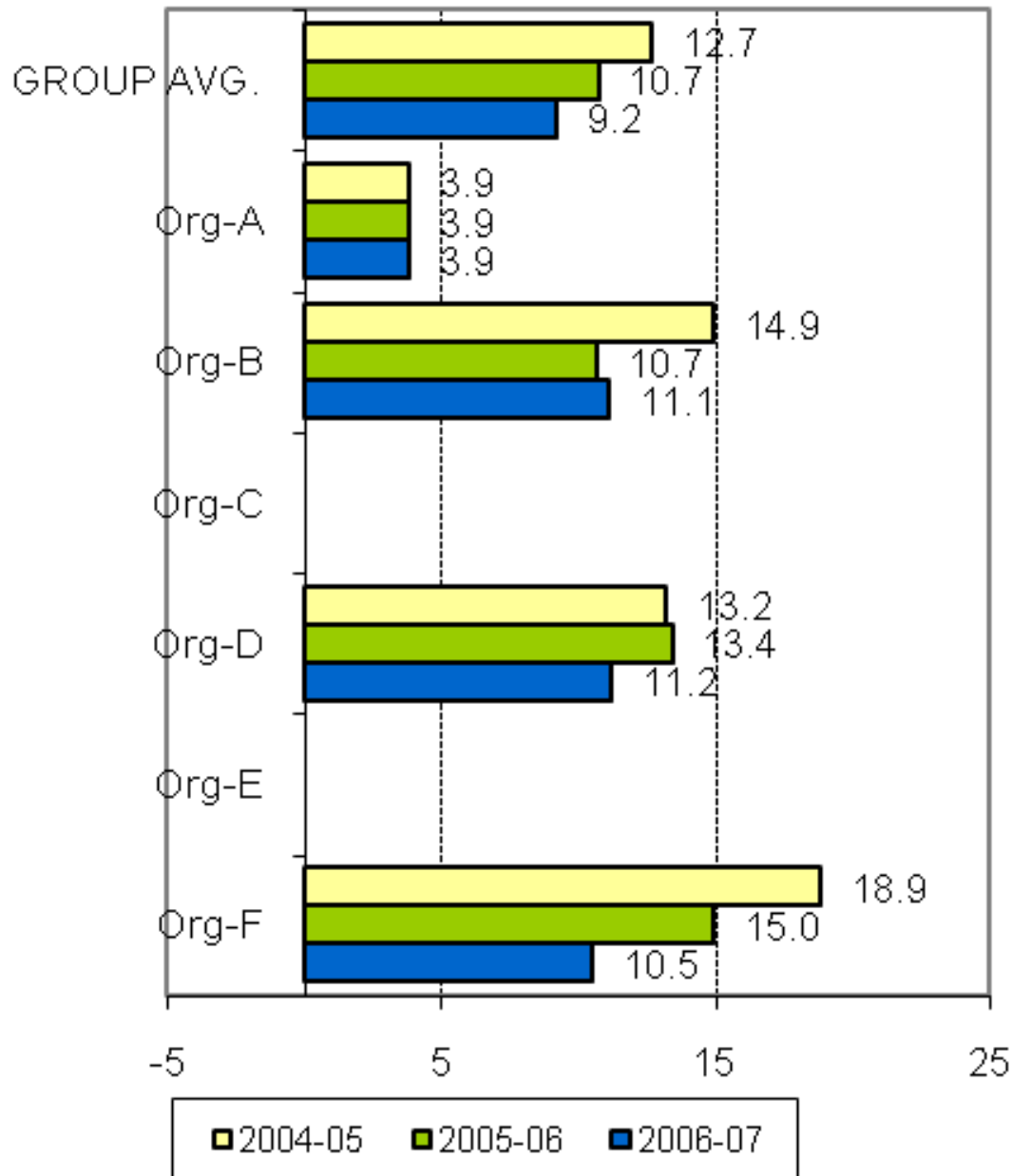
A joint Australian,
State and Territory
Government Initiative



AMHOCN

"Sharing Information to
Improve Outcomes"

KPI #3 Average acute length of stay



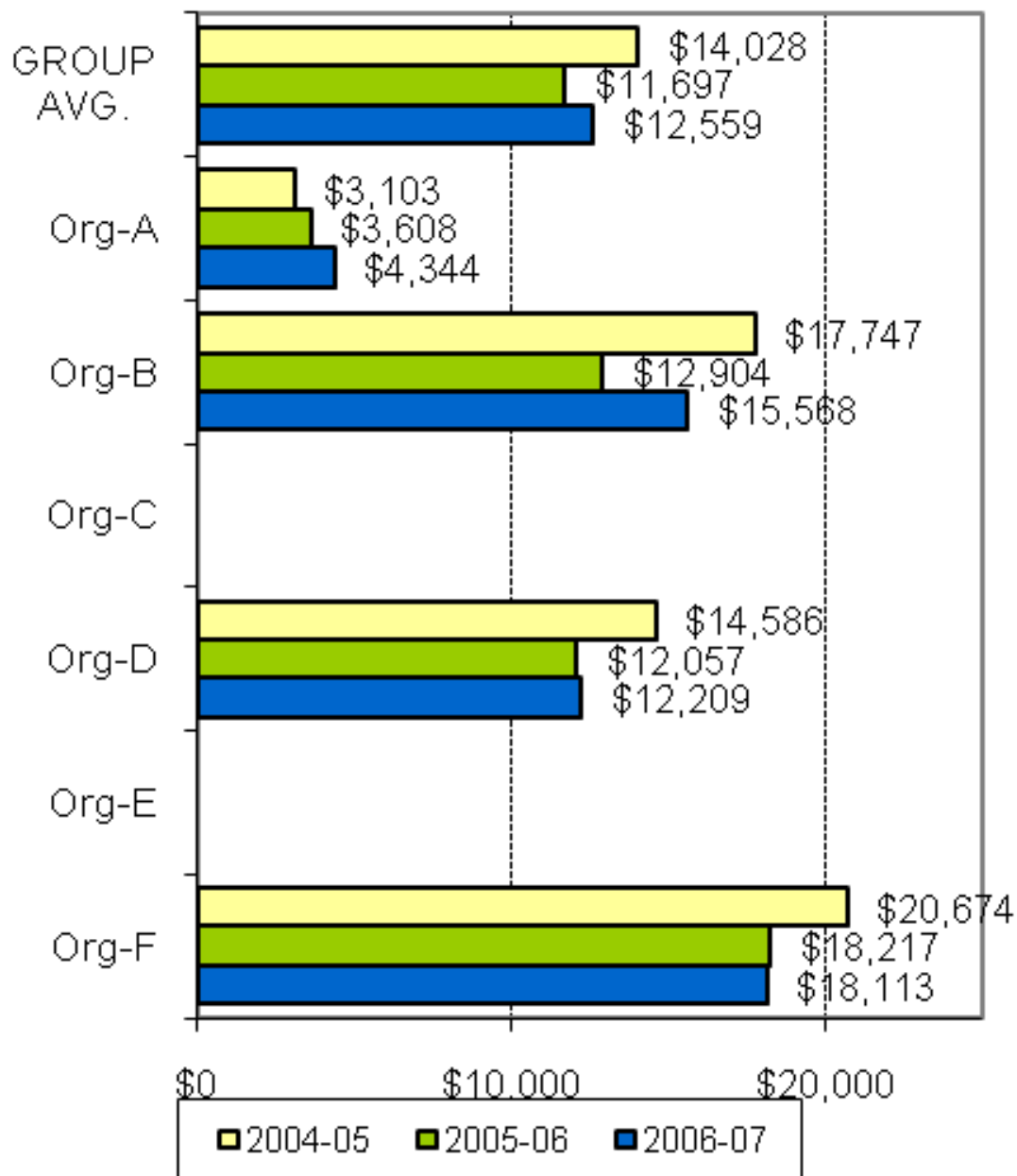
A joint Australian,
State and Territory
Government Initiative



AMHOCN

"Sharing Information to
Improve Outcomes"

KPI #4 Cost per acute inpatient episode



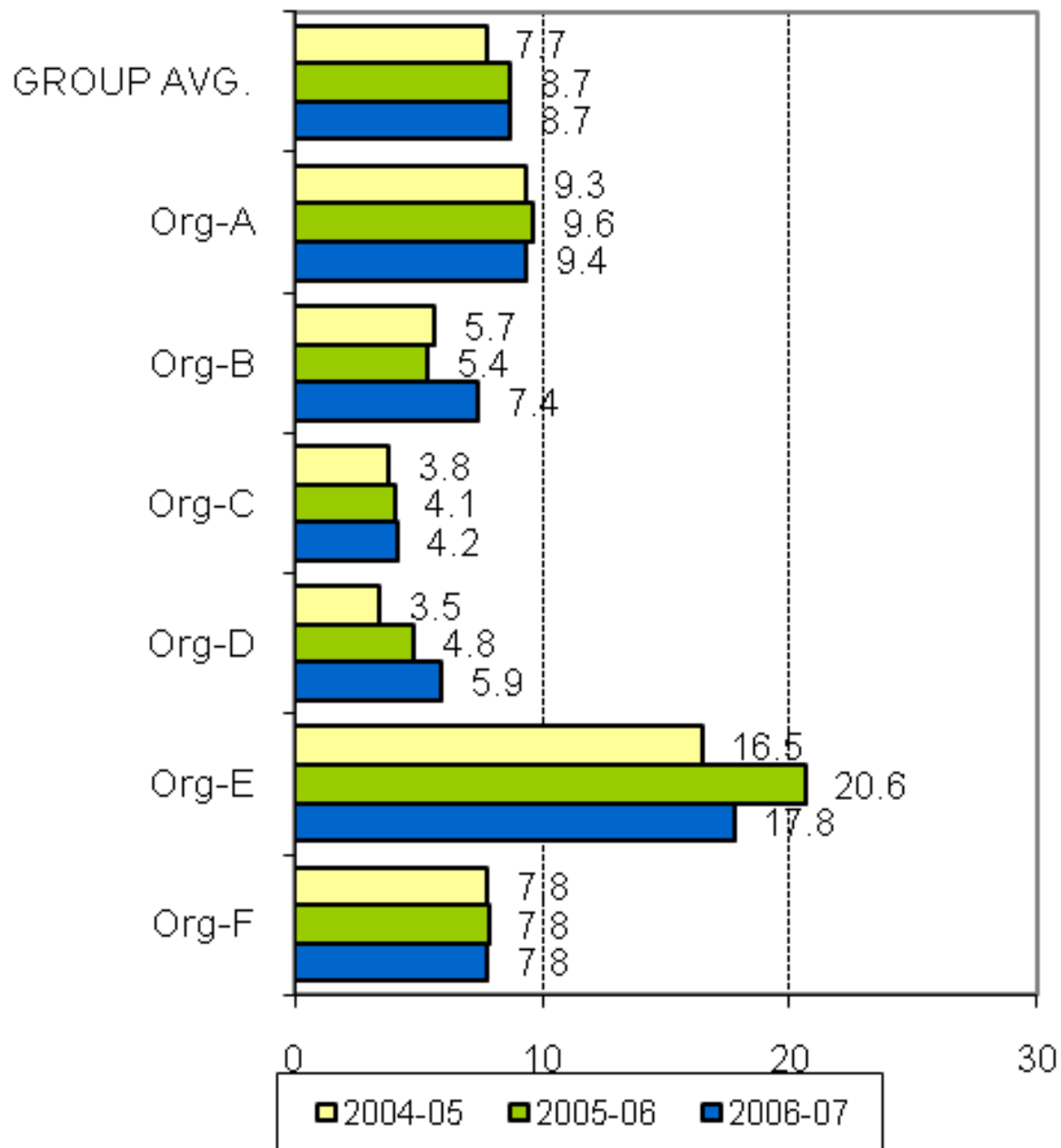
A joint Australian, State and Territory Government Initiative



AMHOCN

"Sharing Information to Improve Outcomes"

KPI #5 Average treatment days per 3 month period of community care



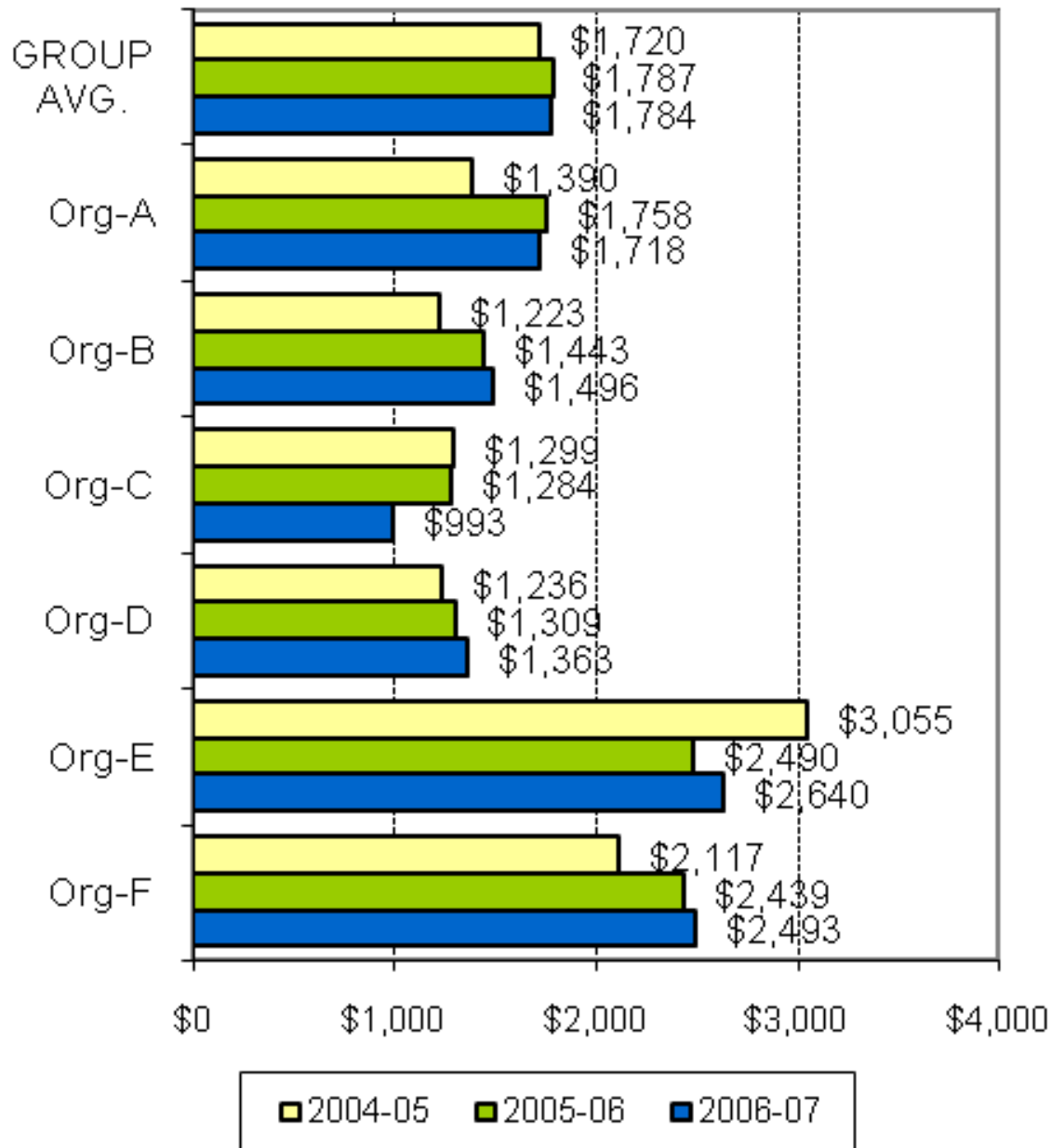
A joint Australian, State and Territory Government Initiative



AMHOCN

"Sharing Information to Improve Outcomes"

KPI #6 Average cost per 3 month period of community care



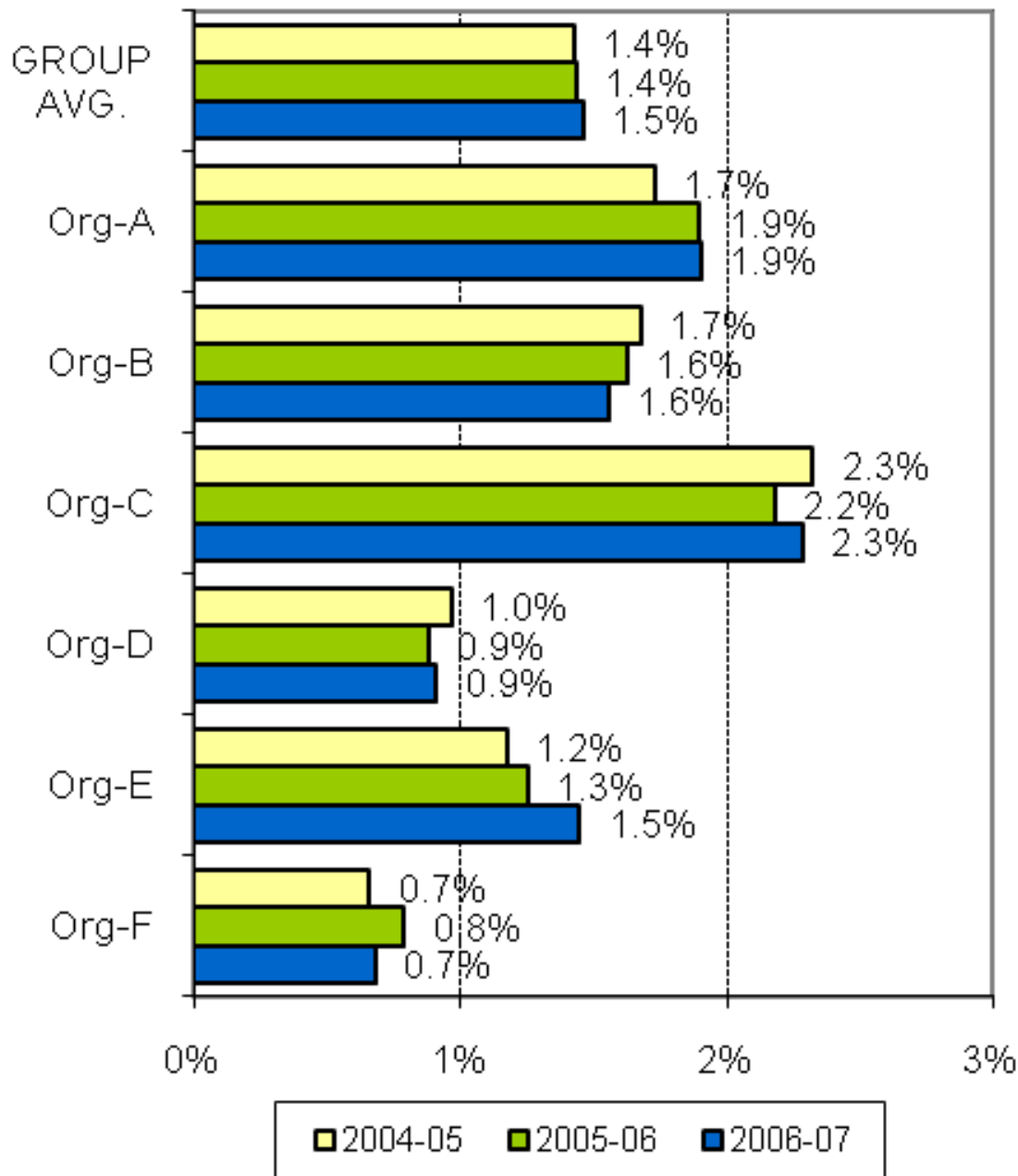
A joint Australian, State and Territory Government Initiative



AMHOCN

"Sharing Information to Improve Outcomes"

KPI #7a % target population receiving ambulatory services



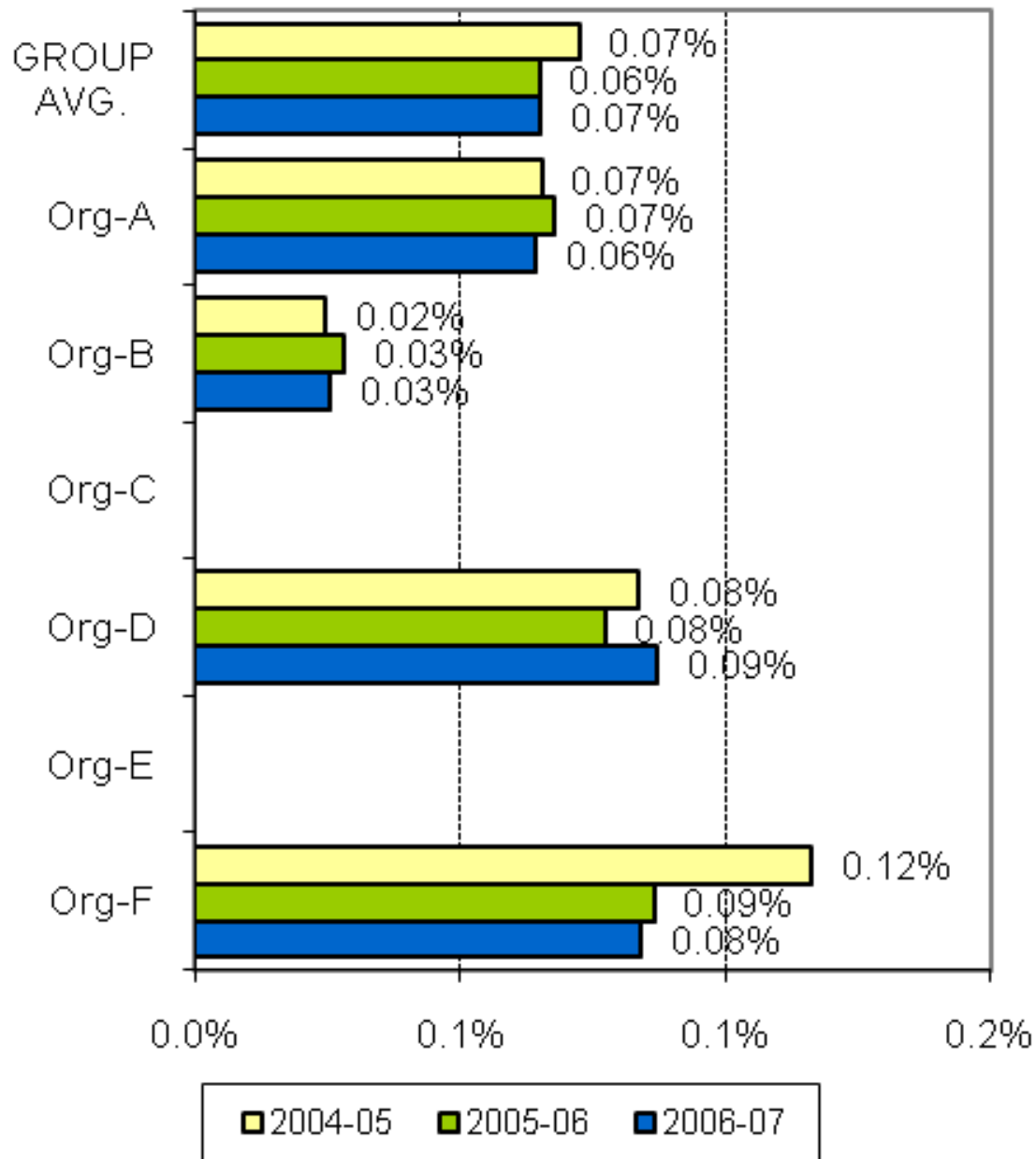
A joint Australian, State and Territory Government Initiative



AMHOCN

"Sharing Information to Improve Outcomes"

KPI #7b % target population receiving inpatient services



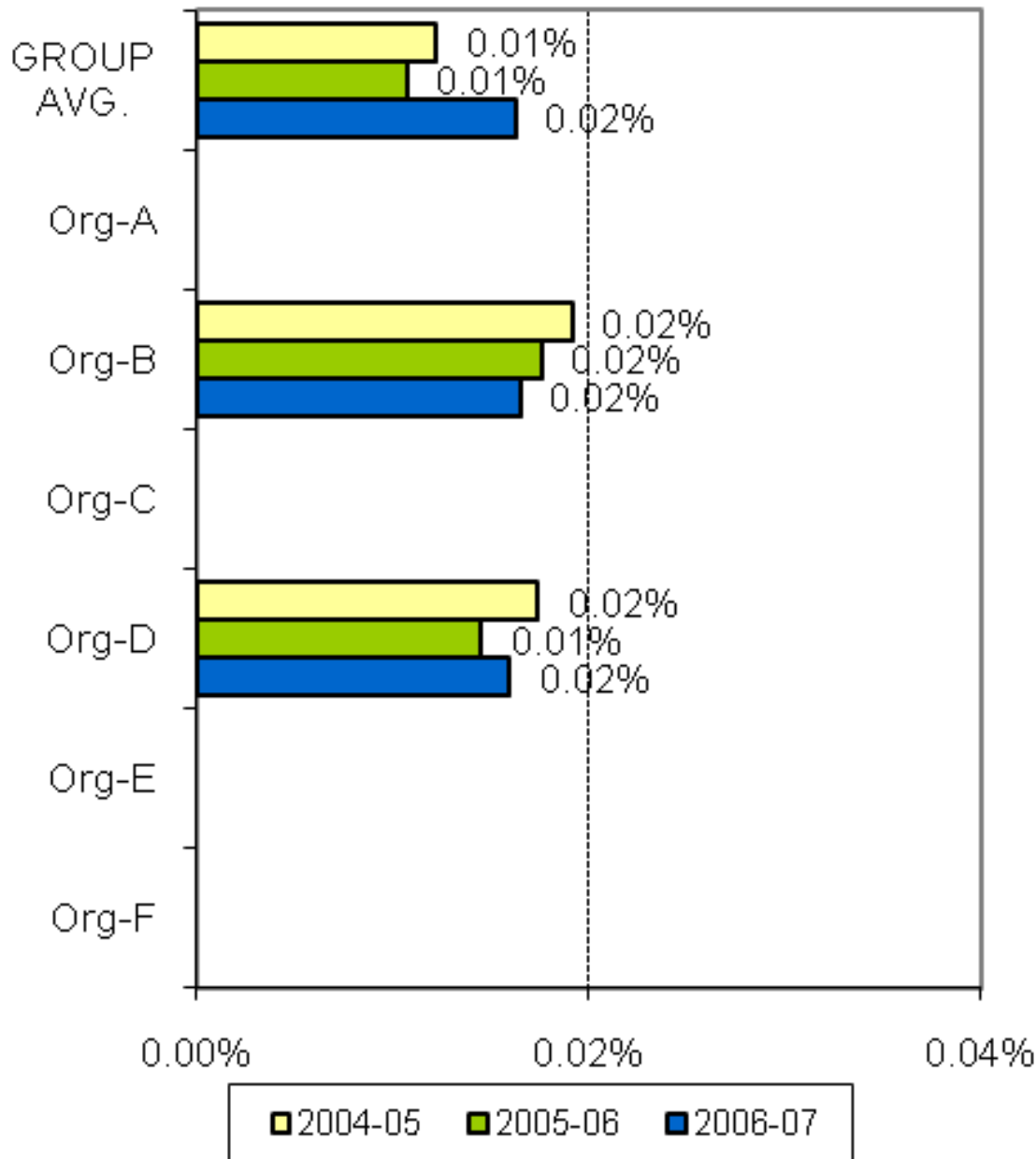
A joint Australian, State and Territory Government Initiative



AMHOCN

"Sharing Information to Improve Outcomes"

KPI #7c % target population receiving residential services



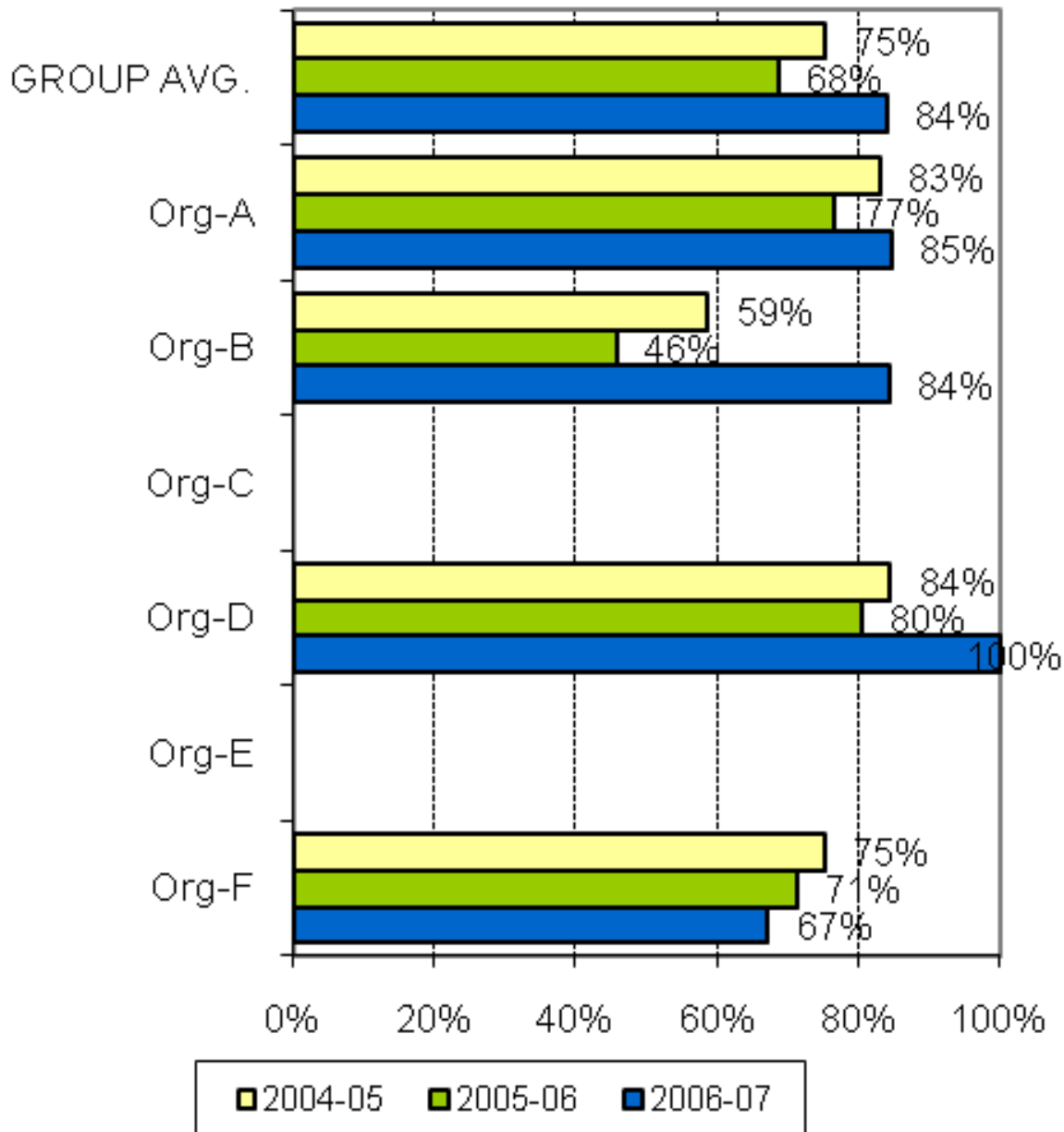
A joint Australian, State and Territory Government Initiative



AMHOCN

"Sharing Information to Improve Outcomes"

KPI #8 Local access to inpatient care



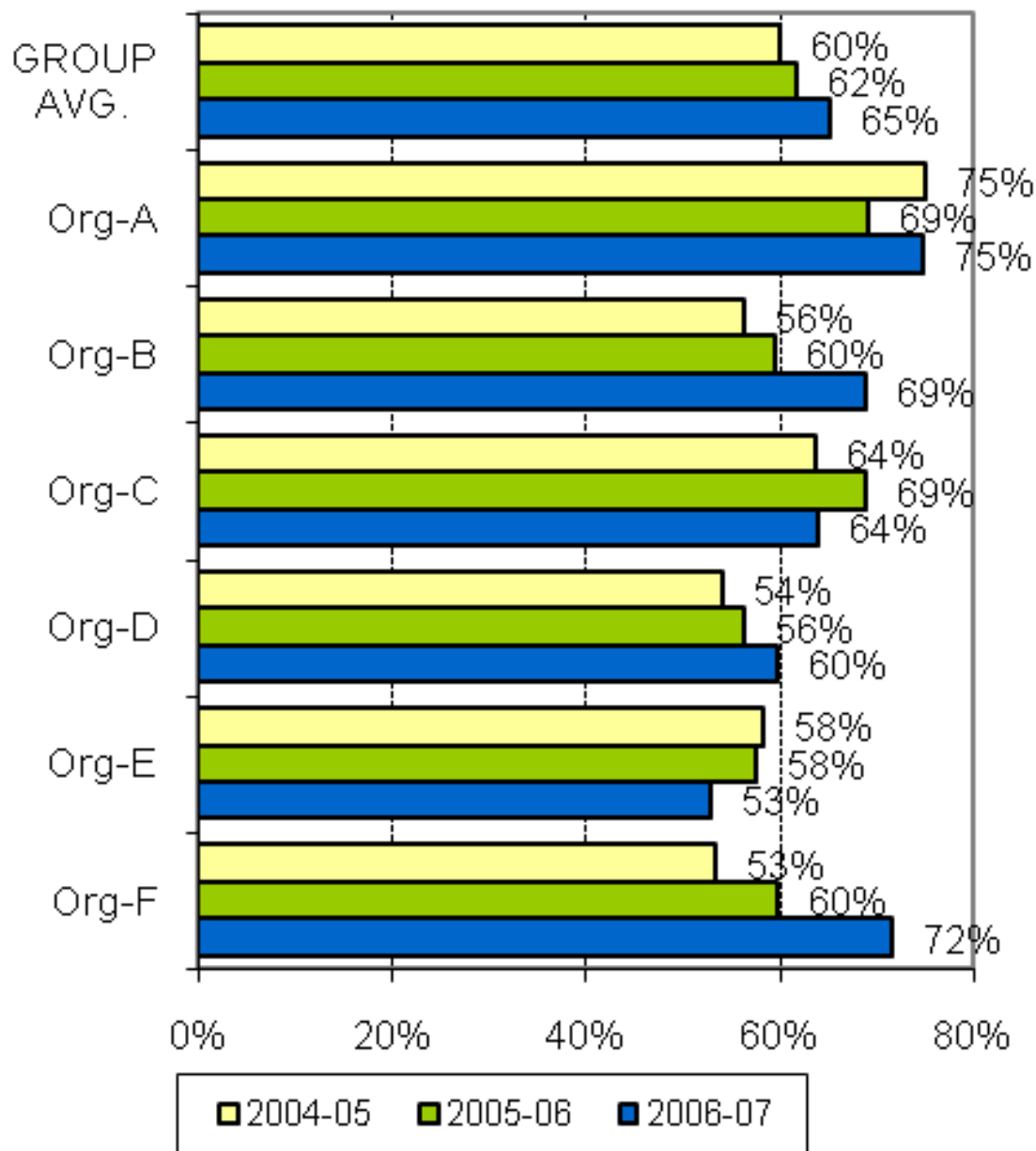
A joint Australian,
State and Territory
Government Initiative



AMHOCN

"Sharing Information to
Improve Outcomes"

KPI #9 New client index



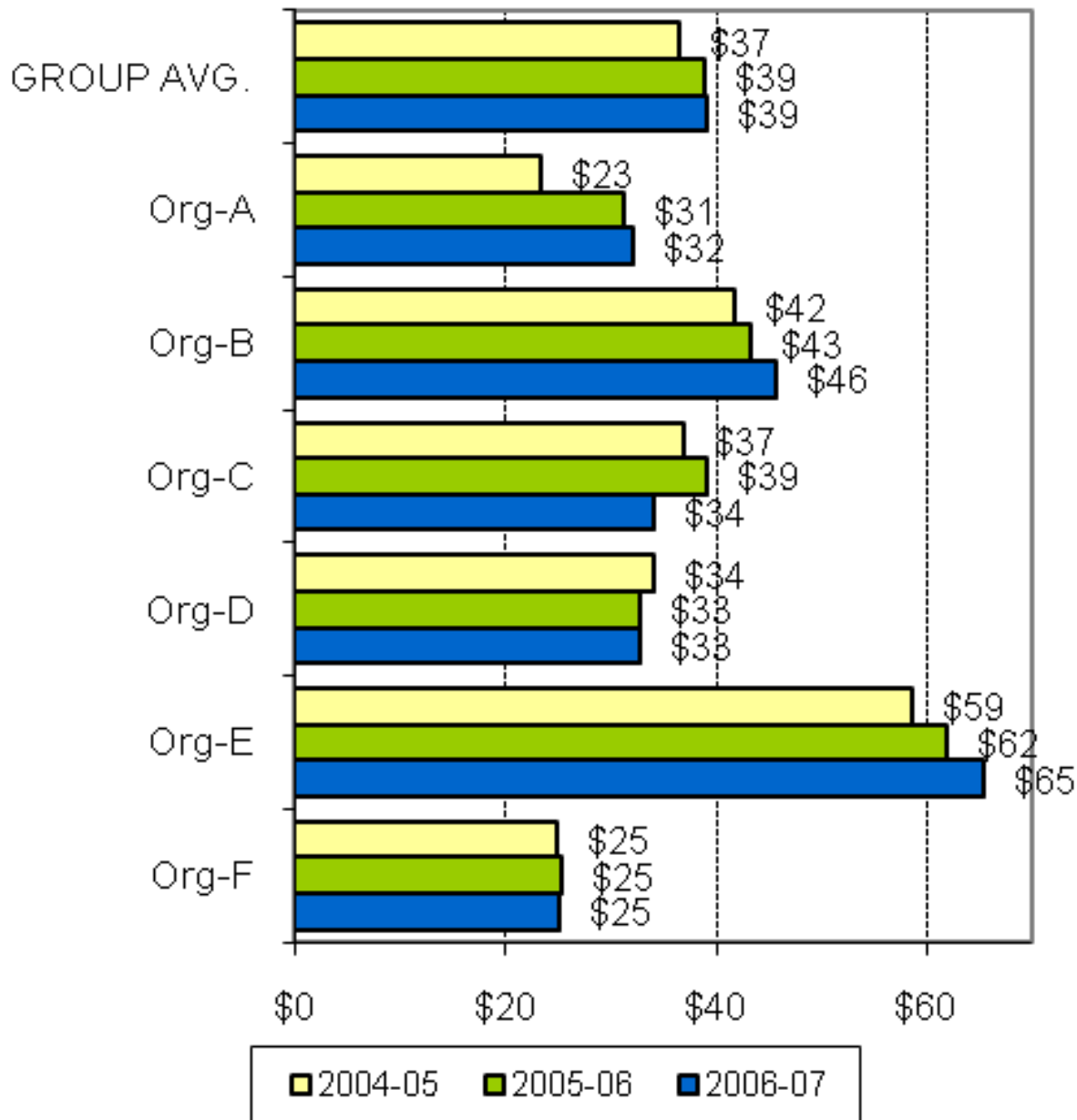
A joint Australian,
State and Territory
Government Initiative



AMHOCN

"Sharing Information to
Improve Outcomes"

KPI #10a Area per capita resources - Ambulatory services (Expenditure)



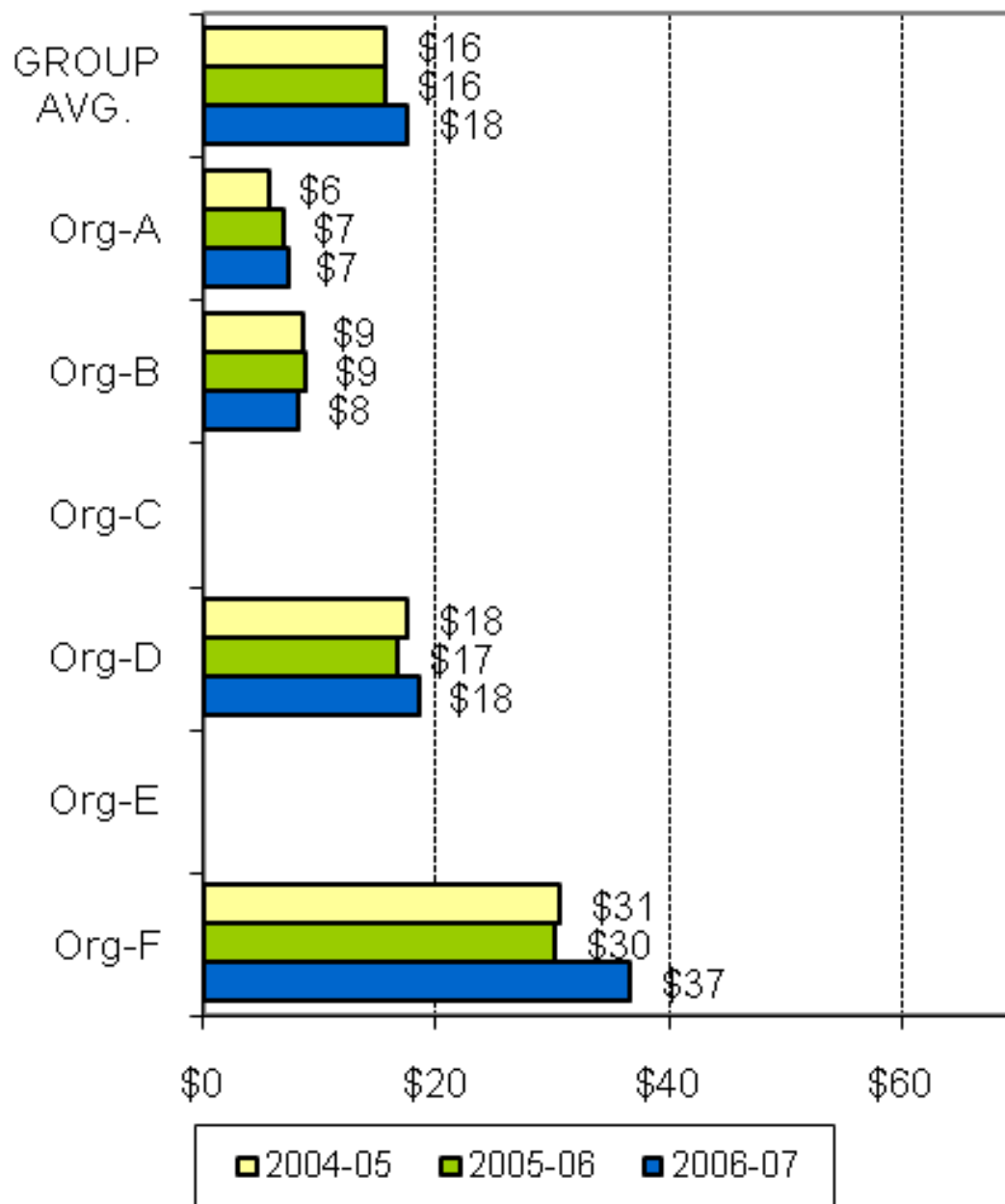
A joint Australian, State and Territory Government Initiative



AMHOCN

"Sharing Information to Improve Outcomes"

KPI #10b Area per capita resources - Inpatient services (Expenditure)



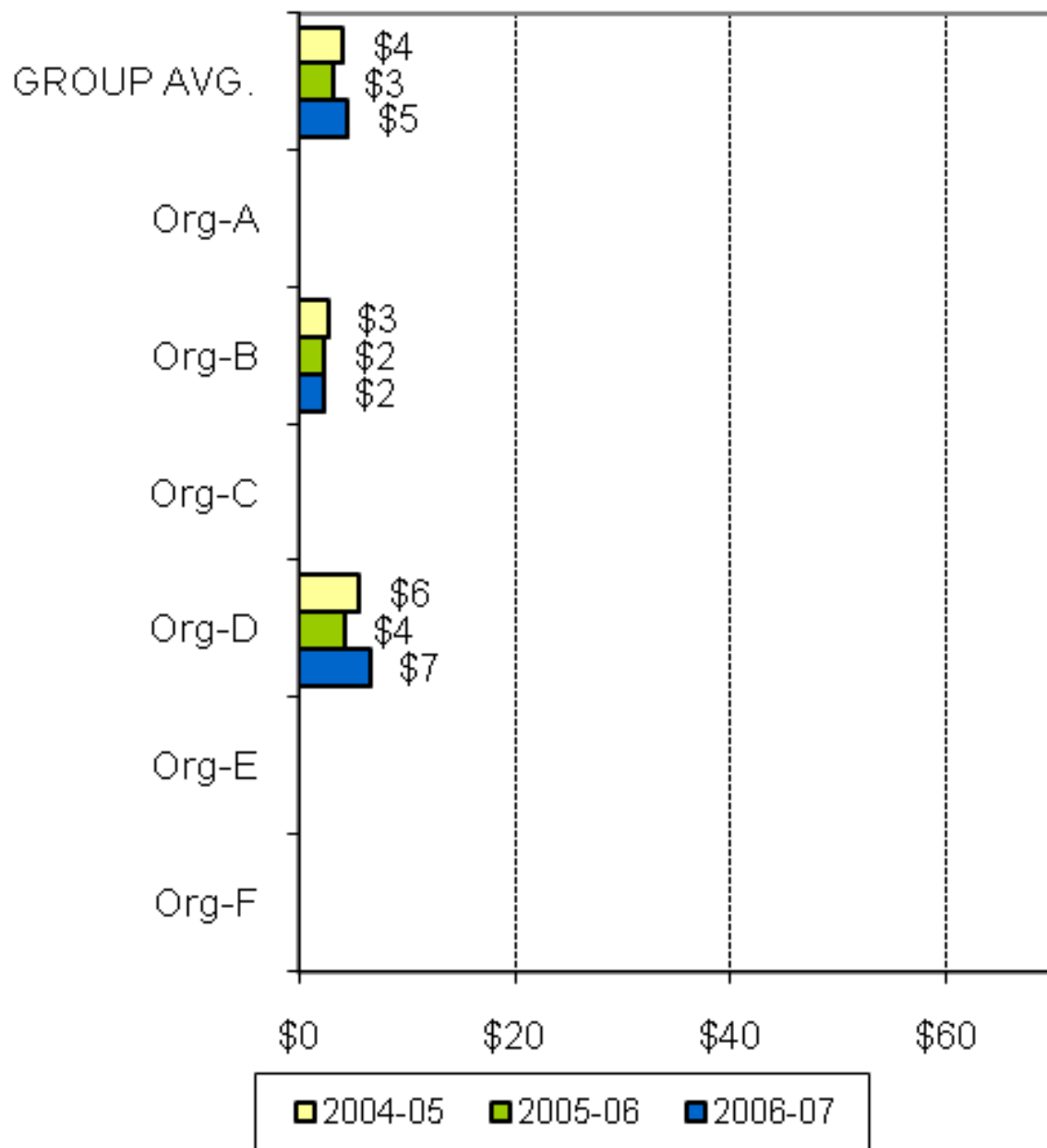
A joint Australian,
State and Territory
Government Initiative



AMHOCN

"Sharing Information to
Improve Outcomes"

KPI #10c Area per capita resources - Residential services (Expenditure)



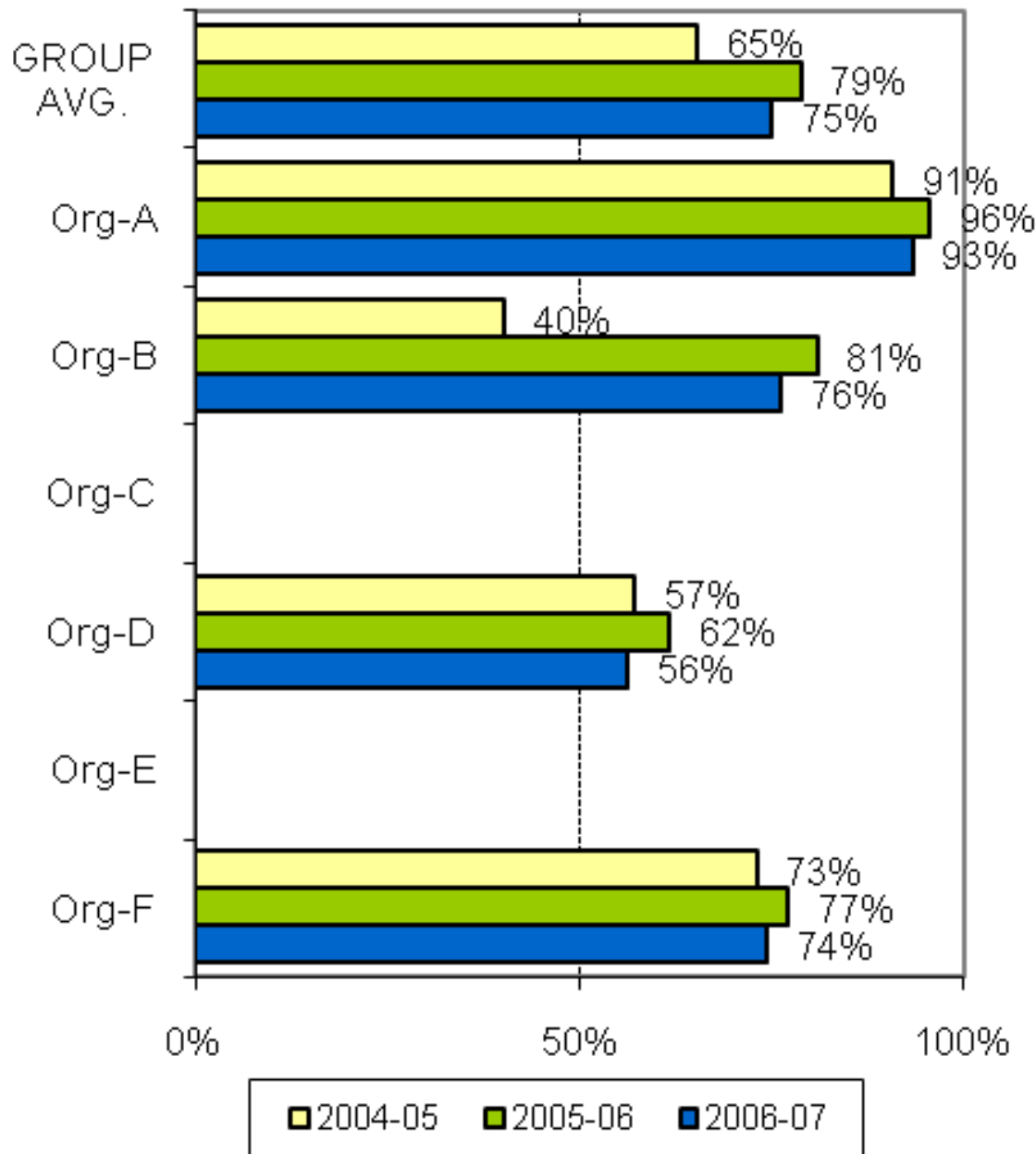
A joint Australian, State and Territory Government Initiative



AMHOCN

"Sharing Information to Improve Outcomes"

KPI #11 Pre admission community care



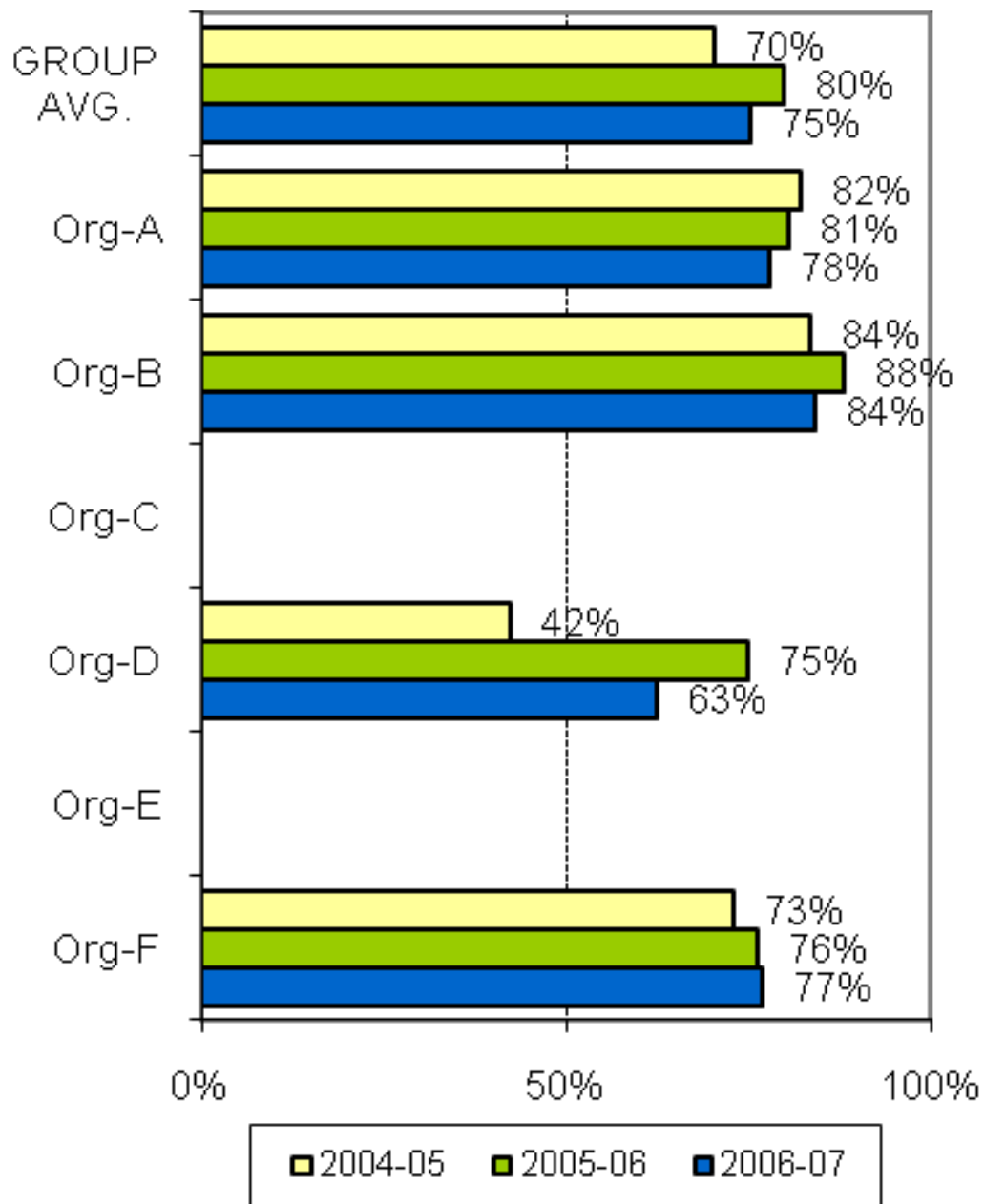
A joint Australian, State and Territory Government Initiative



AMHOCN

"Sharing Information to Improve Outcomes"

KPI #12 Post discharge community care



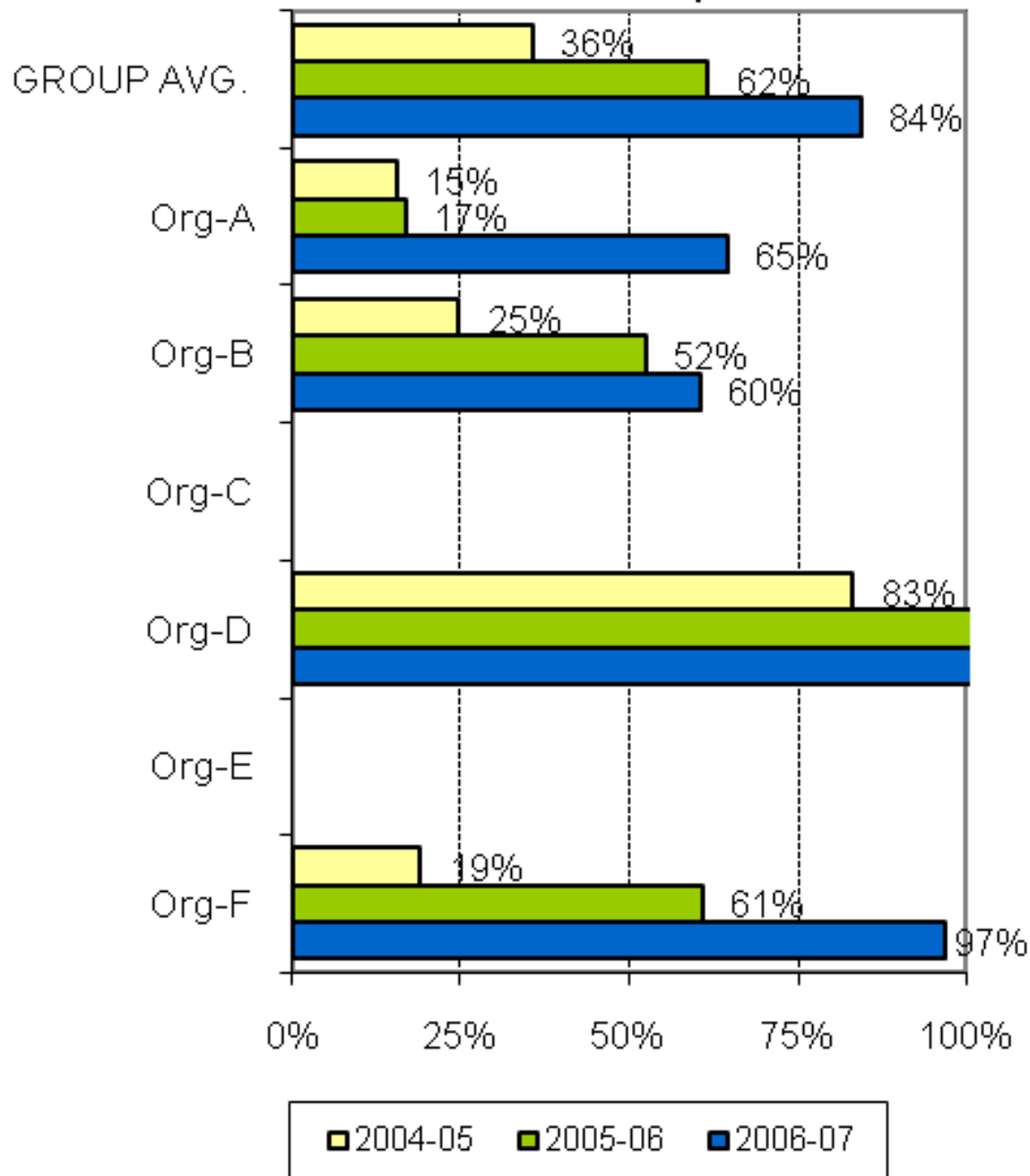
A joint Australian, State and Territory Government Initiative



AMHOCN

"Sharing Information to Improve Outcomes"

KPI #13 Outcomes readiness - Inpatient



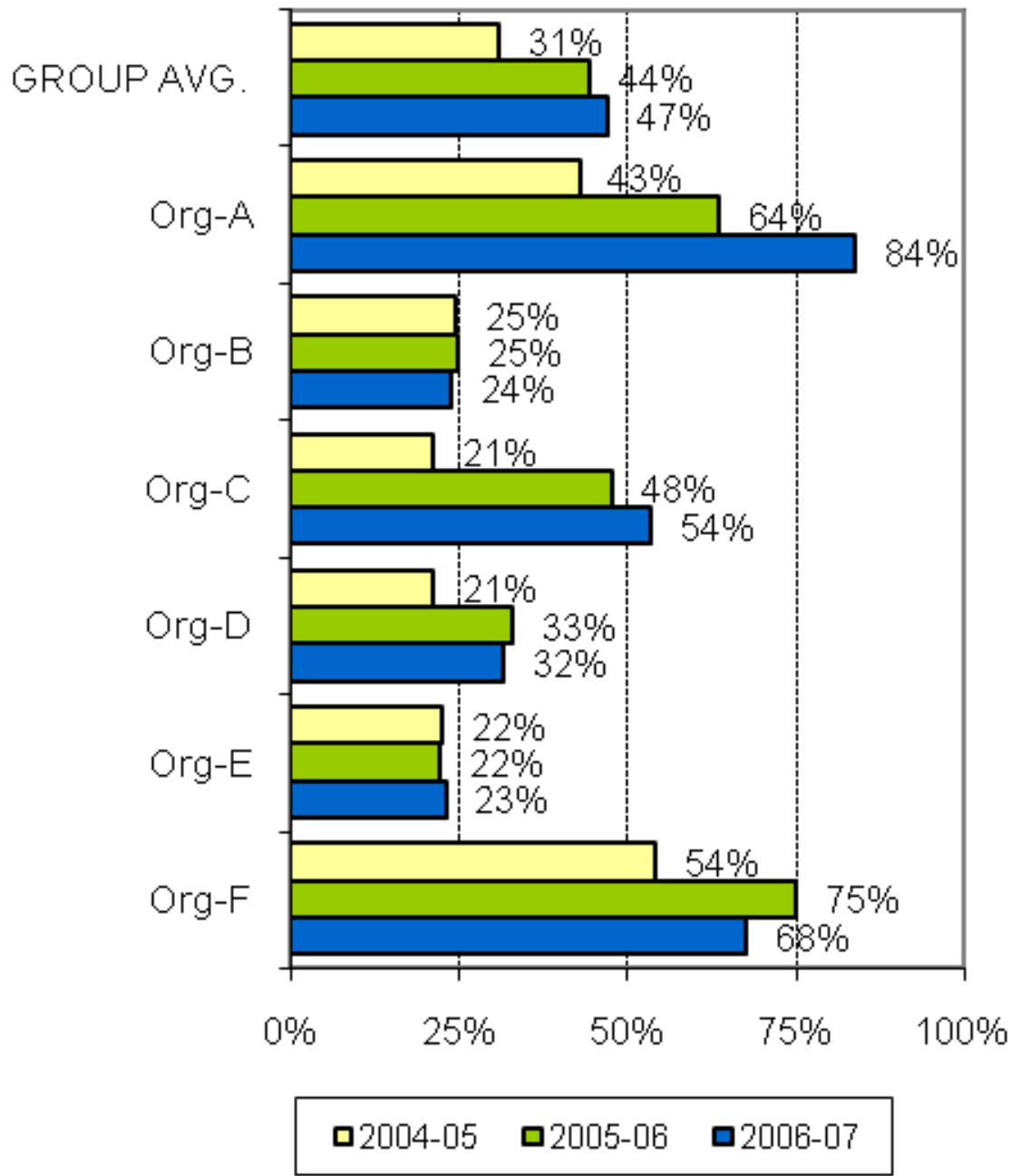
A joint Australian, State and Territory Government Initiative



AMHOCN

"Sharing Information to Improve Outcomes"

KPI #13 Outcomes readiness - Ambulatory



A joint Australian, State and Territory Government Initiative

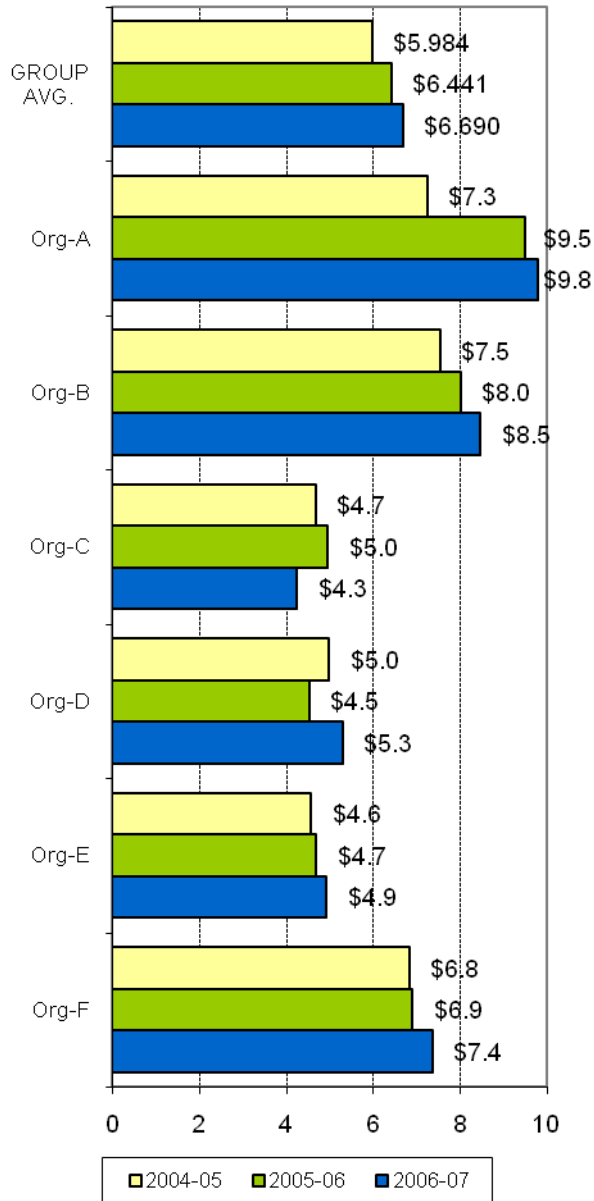


AMHOCN

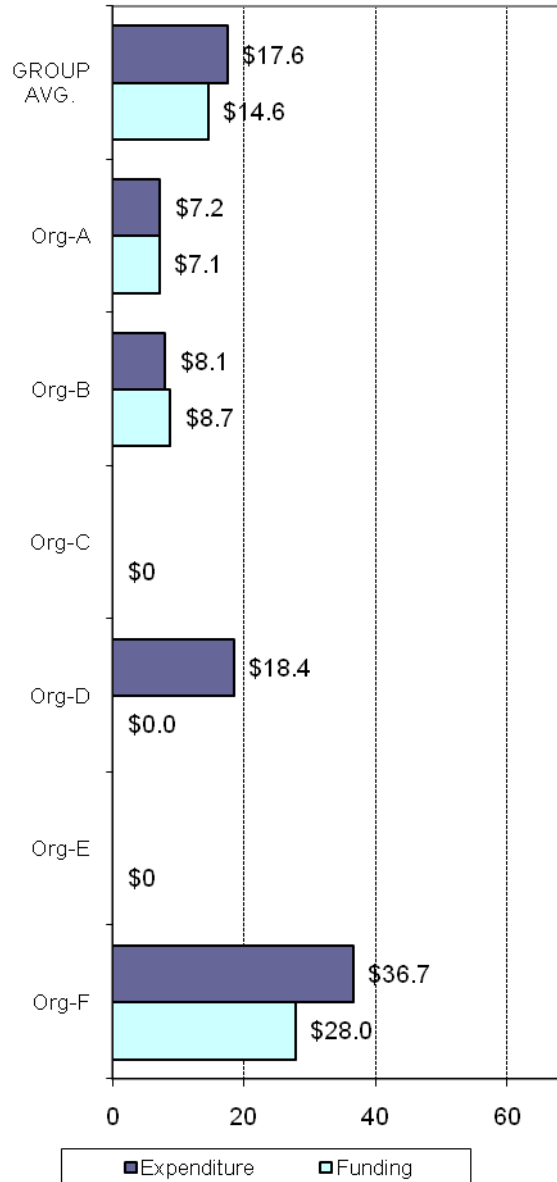
"Sharing Information to Improve Outcomes"

**THEME 1: COMPARATIVE
RESOURCES AVAILABLE TO THE
ORGANISATION**

Total in-scope expenditure (\$M)



Inpatient services financials - \$ per capita 2006-07 (KPI #10)



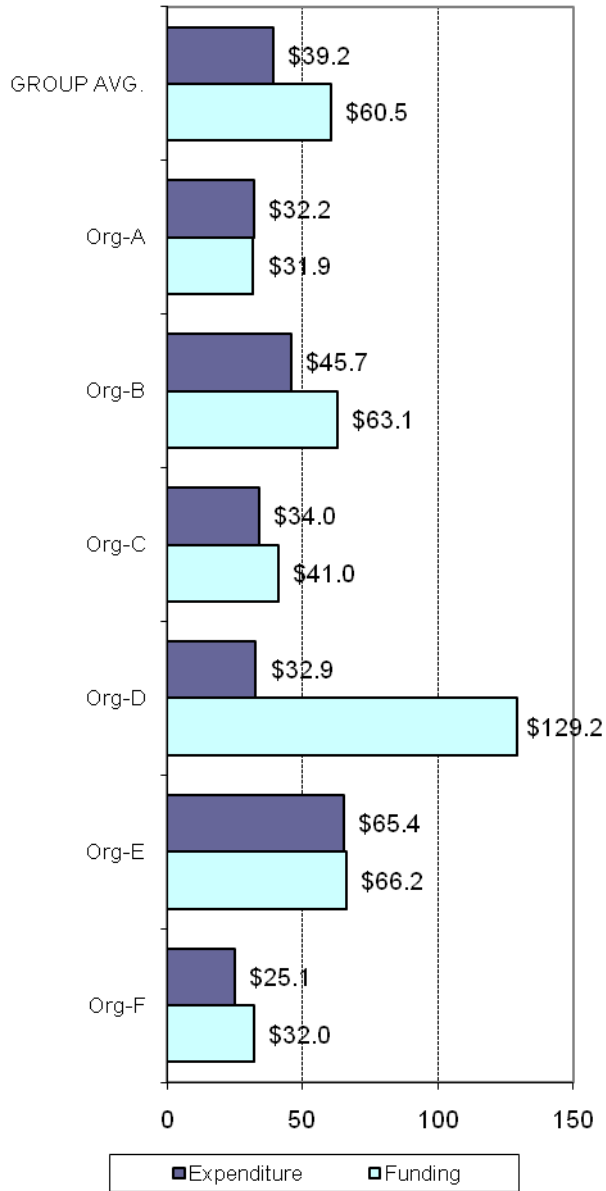
A joint Australian, State and Territory Government Initiative



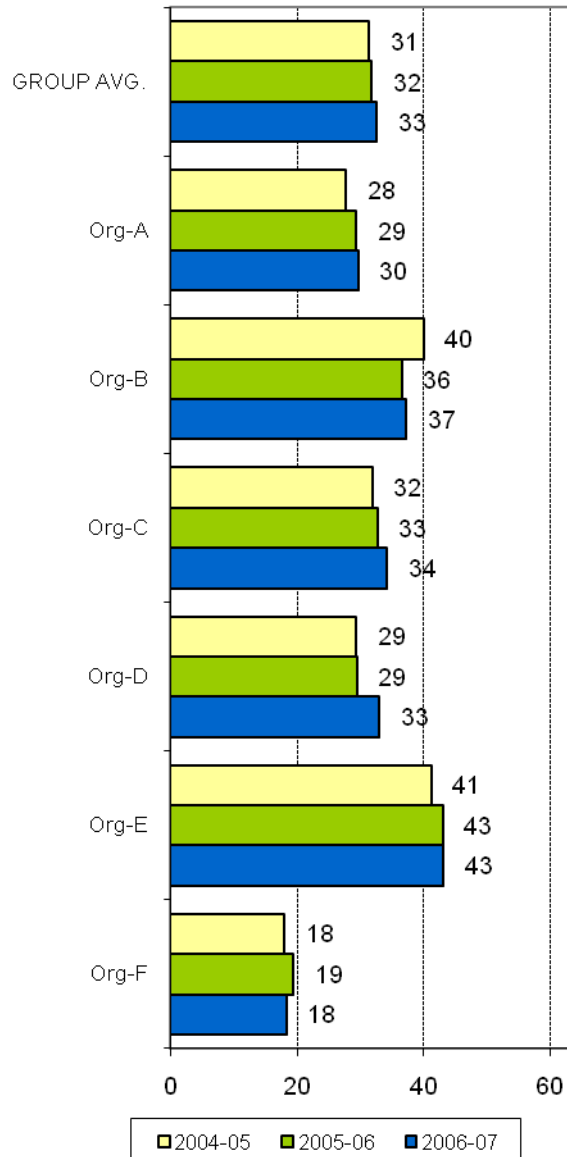
AMHOCN

"Sharing Information to Improve Outcomes"

**Ambulatory care financials - \$ per capita
2006-07 (KPI#10)**



**Ambulatory Direct Care FTE per
100,000 population**



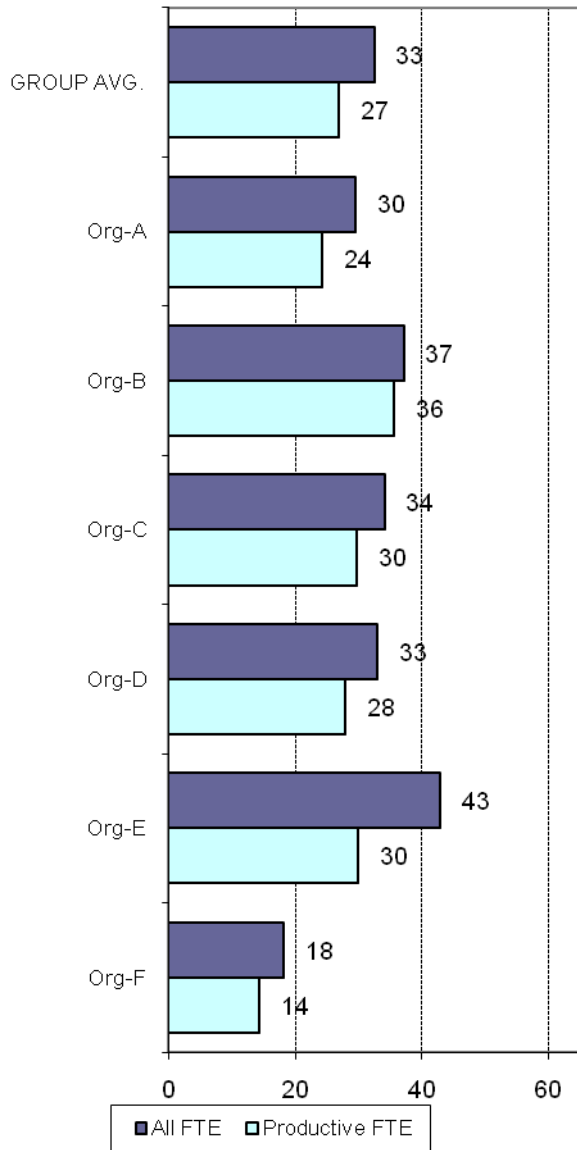
A joint Australian,
State and Territory
Government Initiative



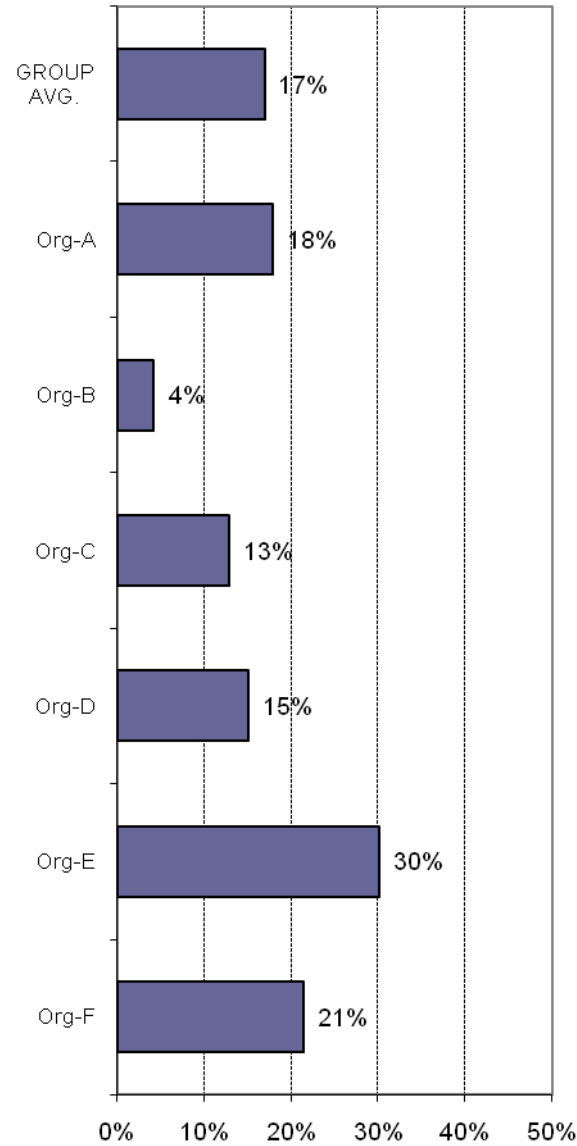
AMHOCN

"Sharing Information to
Improve Outcomes"

Ambulatory Direct Care FTE per 100,000 population - All vs Productive FTE, 2006-07



Ambulatory Direct Care FTE - Unproductive as per cent of total FTE, 2006-07



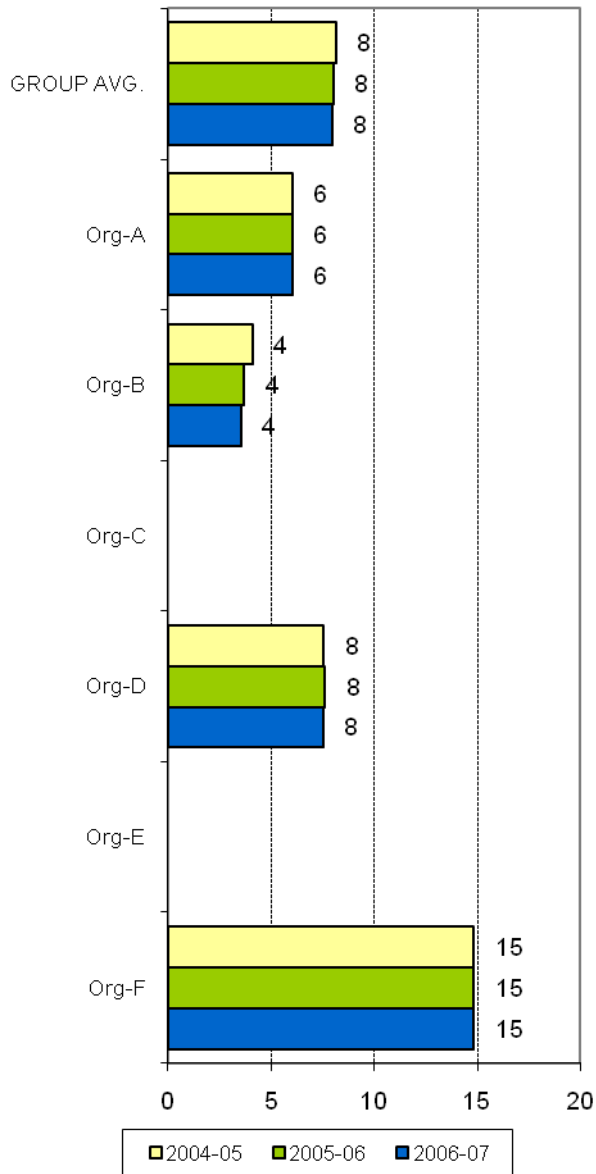
A joint Australian, State and Territory Government Initiative



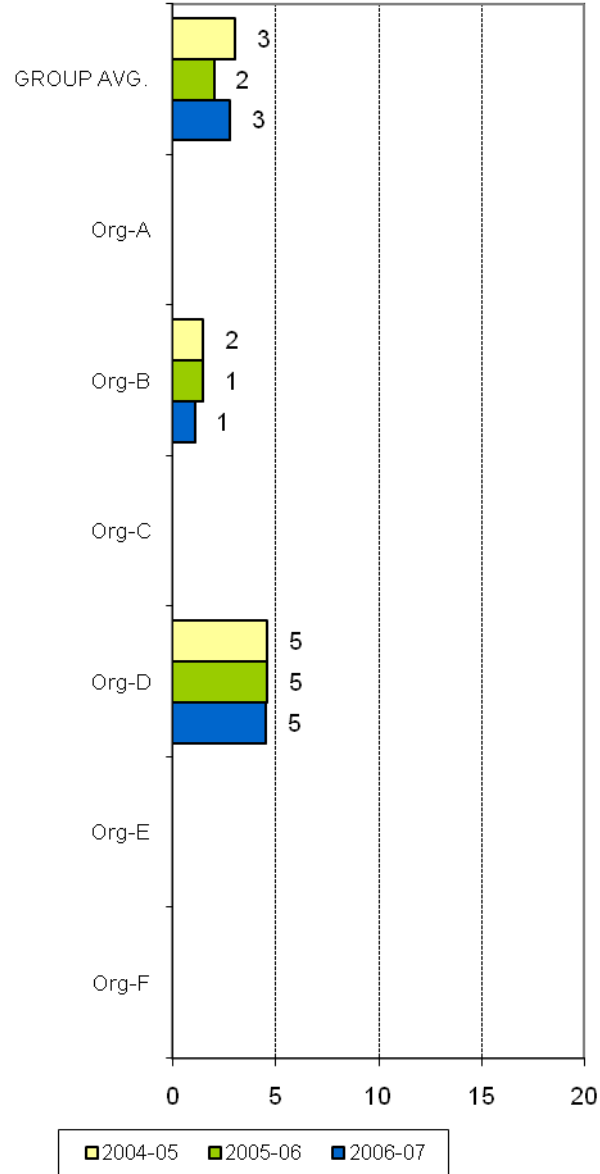
AMHOCN

"Sharing Information to Improve Outcomes"

Acute beds per 100,000



Residential beds per 100,000



A joint Australian, State and Territory Government Initiative



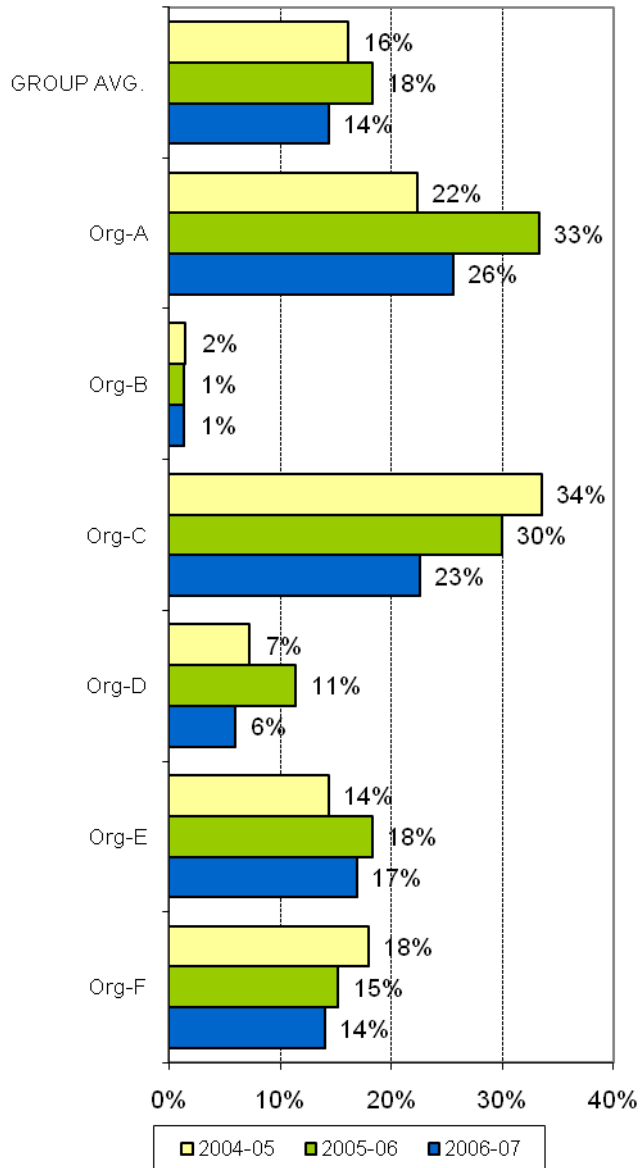
AMHOCN

"Sharing Information to Improve Outcomes"

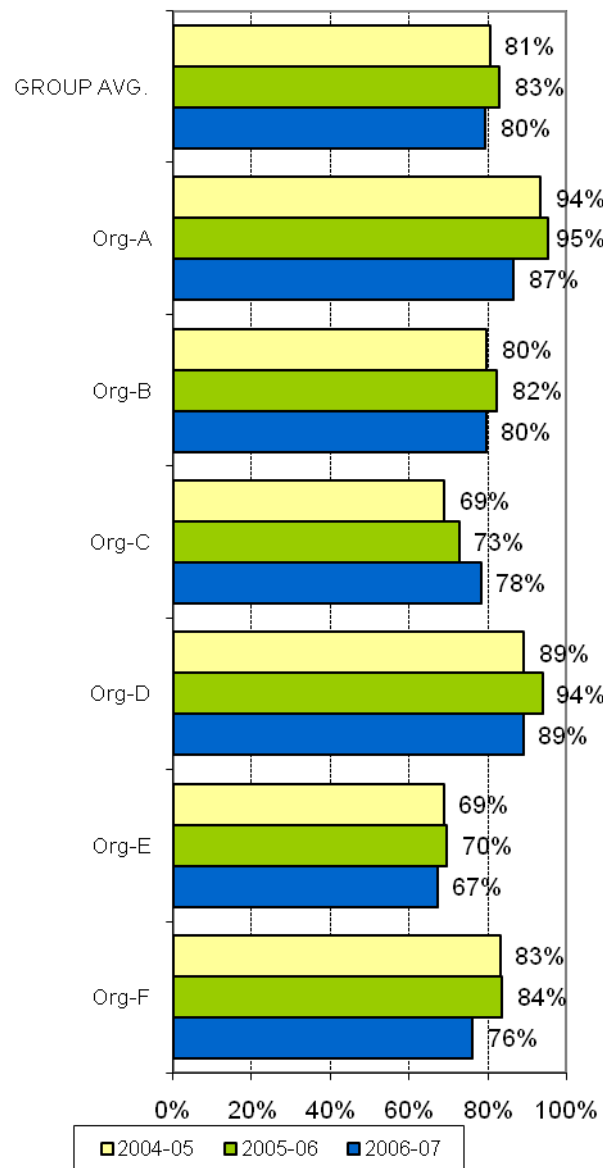
THEME 2: EFFICIENCY IN USE OF RESOURCES



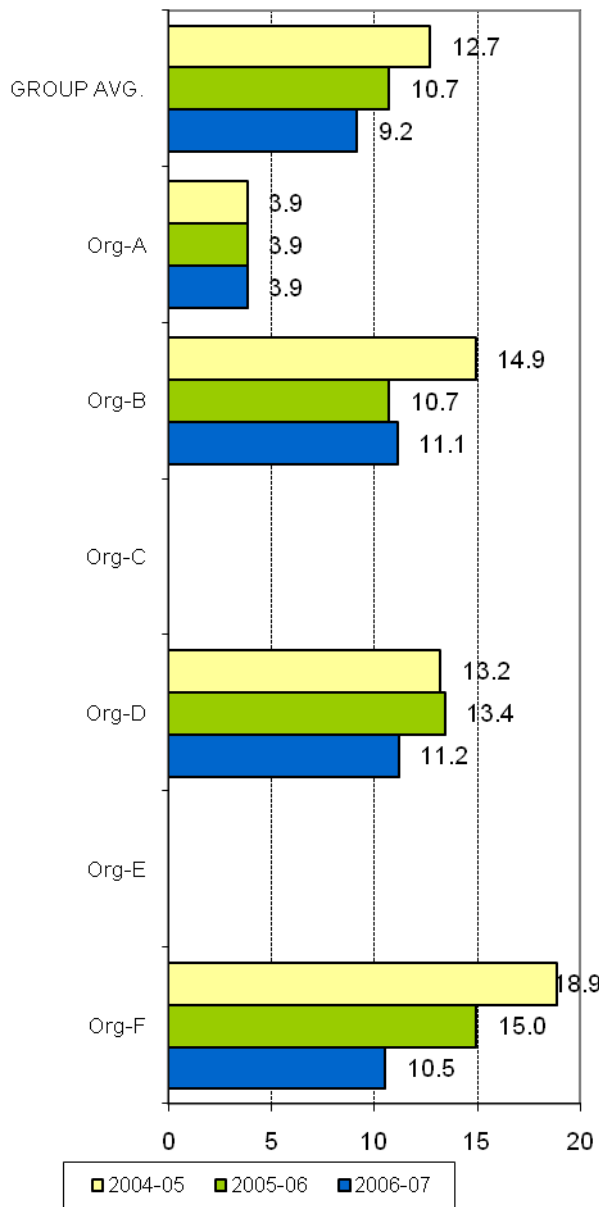
Indirect expenditure as % in scope total expenditure



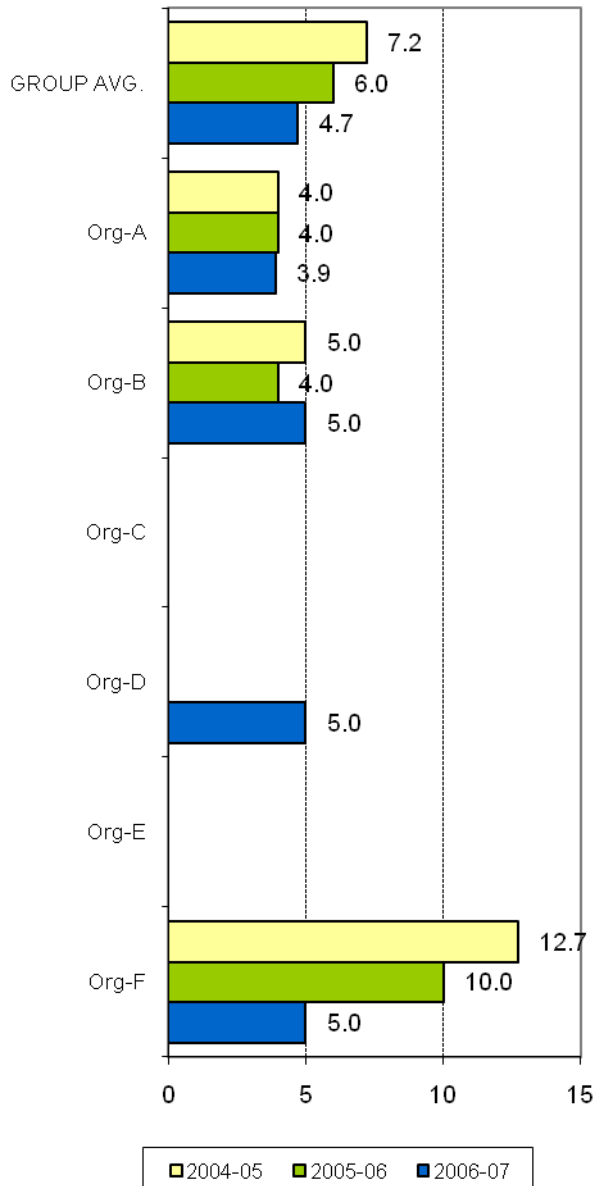
Salaries as % in scope total expenditure



Acute inpatient length of stay (KPI #3) MEAN



Acute inpatient length of stay Median



A joint Australian, State and Territory Government Initiative

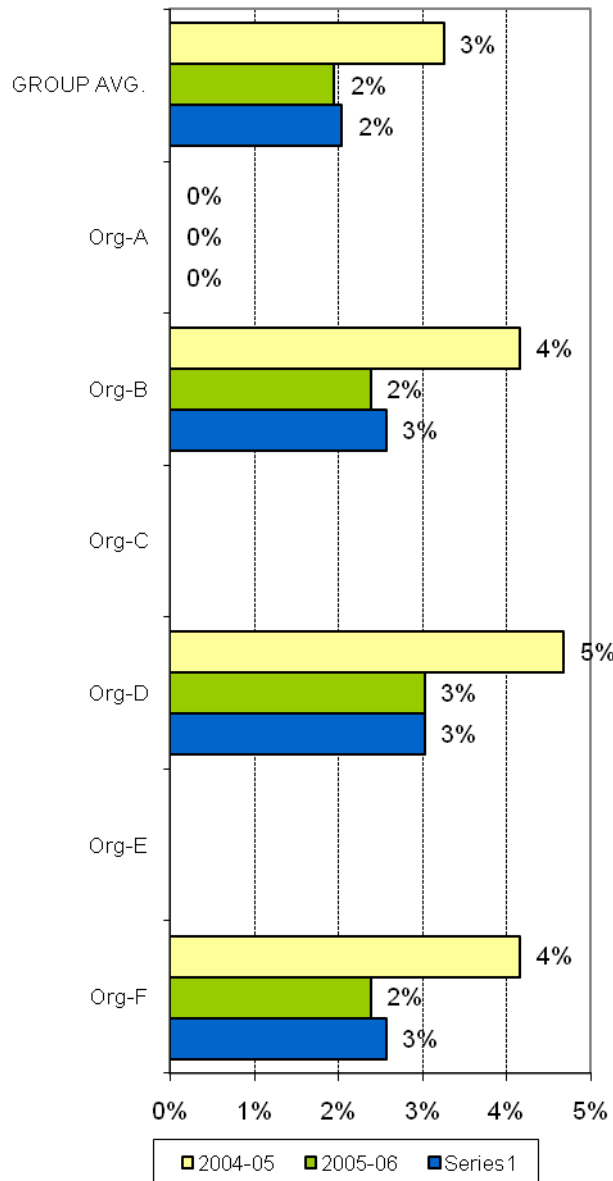


AMHOCN

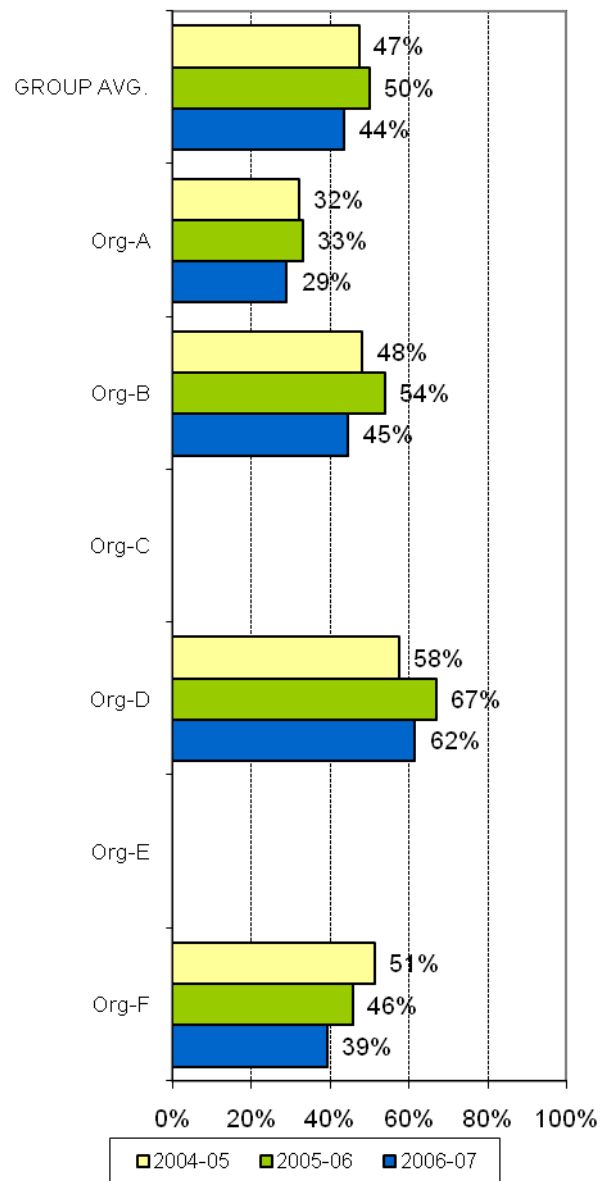
"Sharing Information to Improve Outcomes"



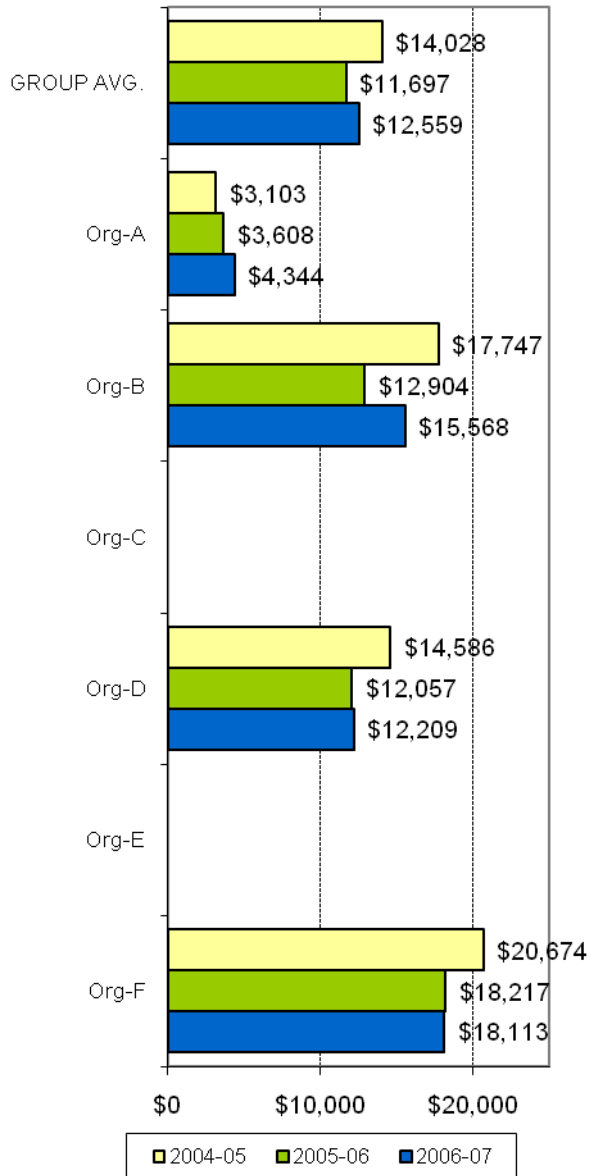
Acute inpatient LOS outliers (>60 days)



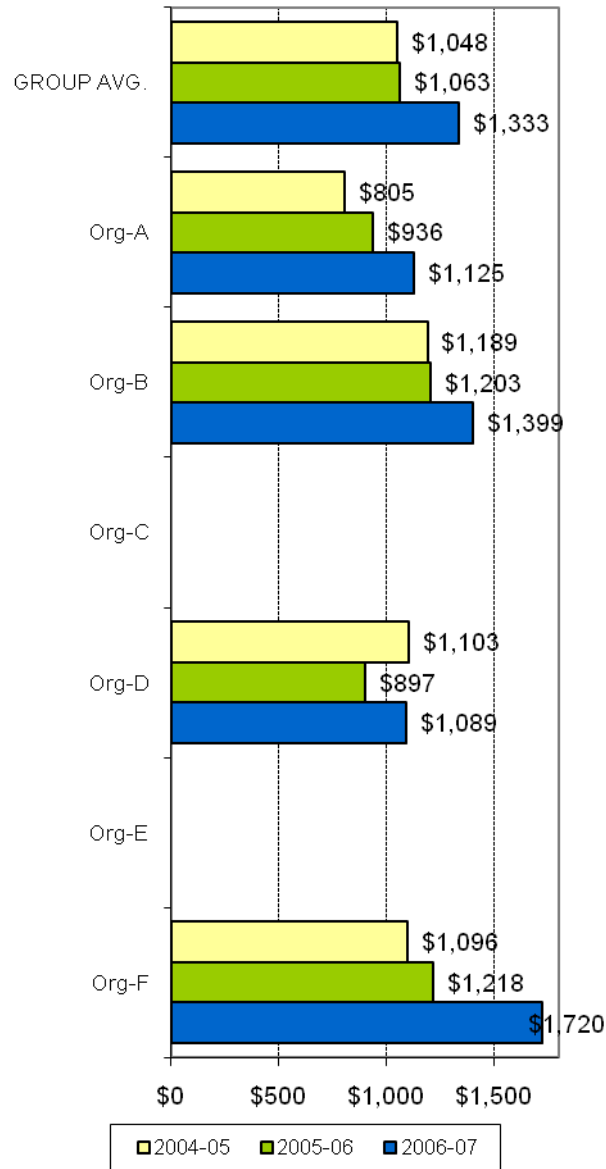
Acute unit (s) - Derived occupancy



Cost per acute inpatient episode (KPI #4)



Cost per day - acute inpatient units



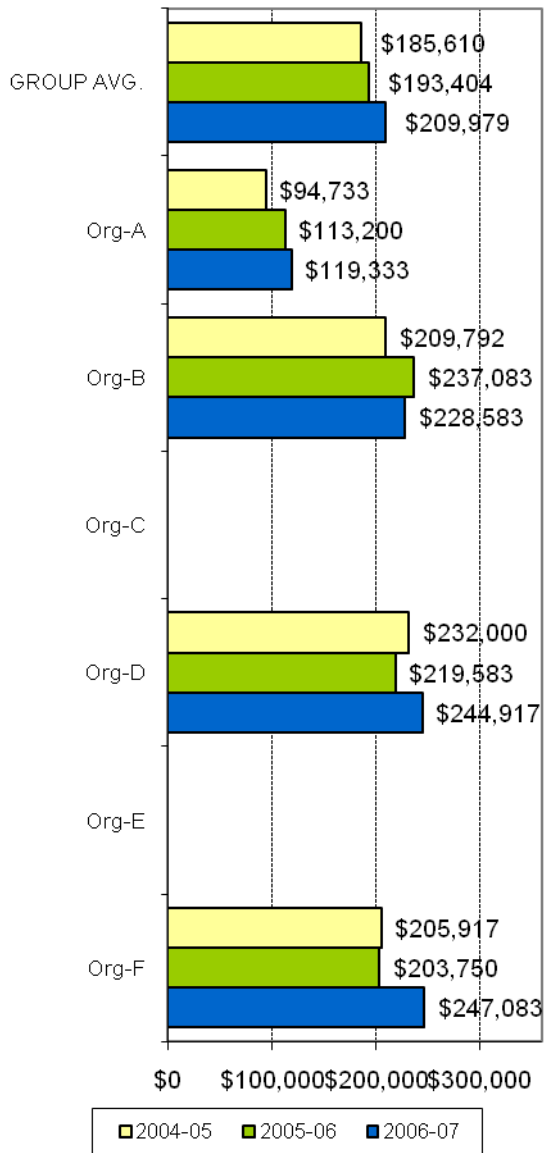
A joint Australian, State and Territory Government Initiative



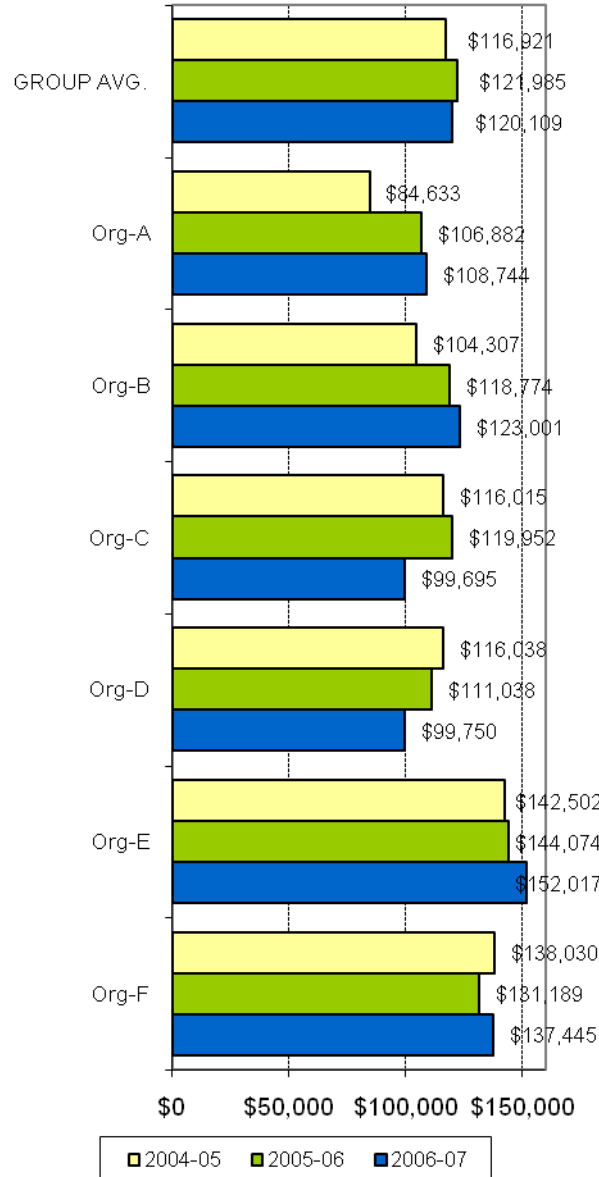
AMHOCN

"Sharing Information to Improve Outcomes"

Full year cost per acute inpatient bed



Full year cost per direct care ambulatory FTE



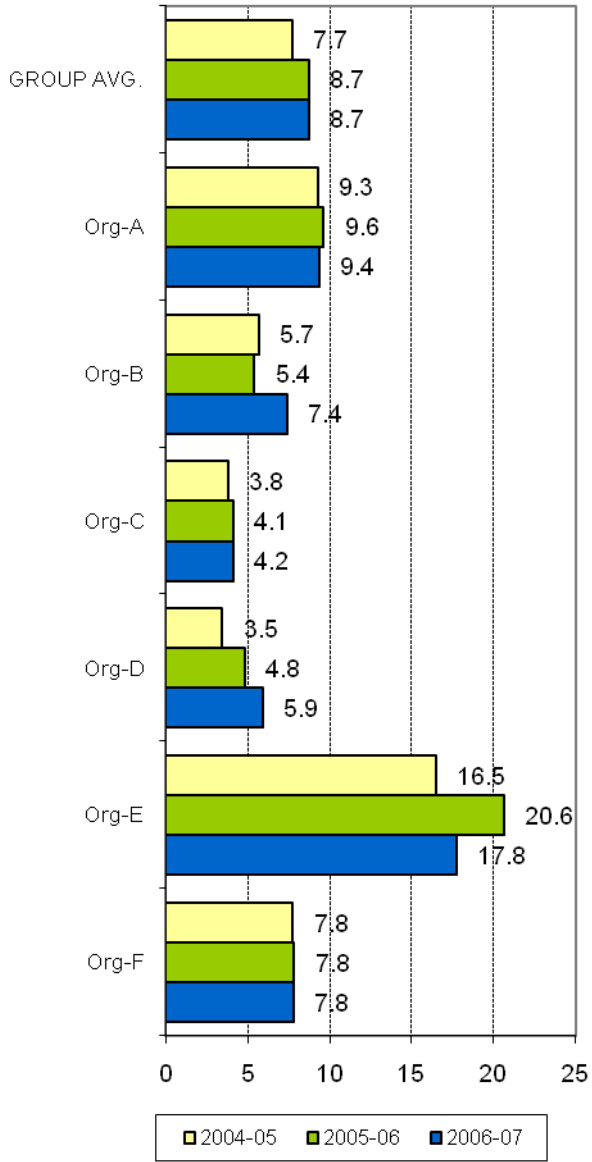
A joint Australian, State and Territory Government Initiative



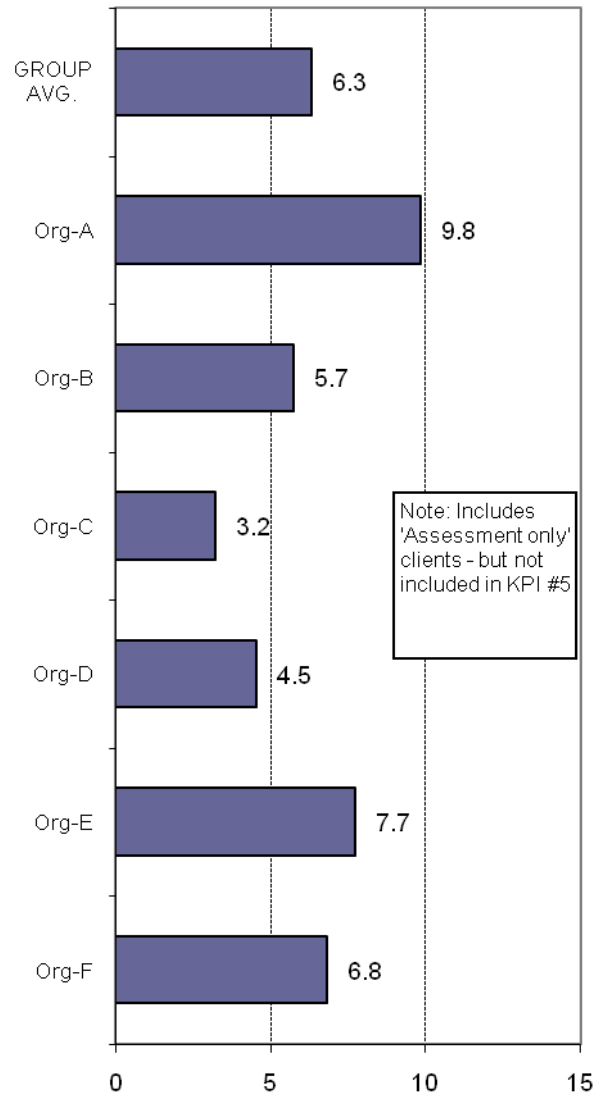
AMHOCN

"Sharing Information to Improve Outcomes"

KPI#5 Average treatment days per 3 month period of community care



Average contact hours per 3 month period of community care, 2006-07



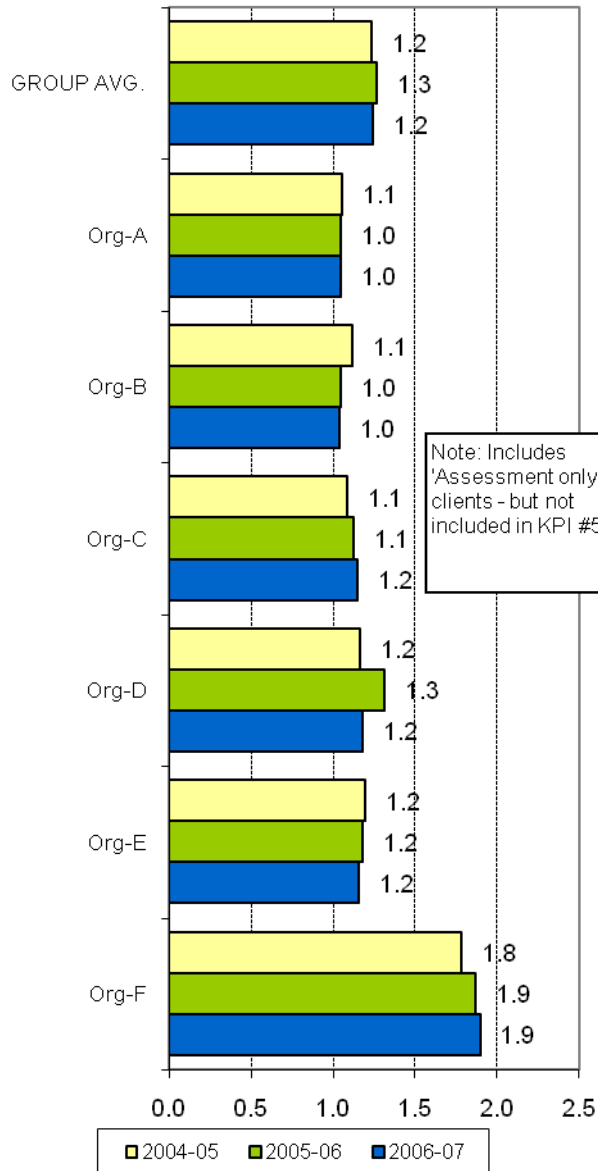
A joint Australian, State and Territory Government Initiative



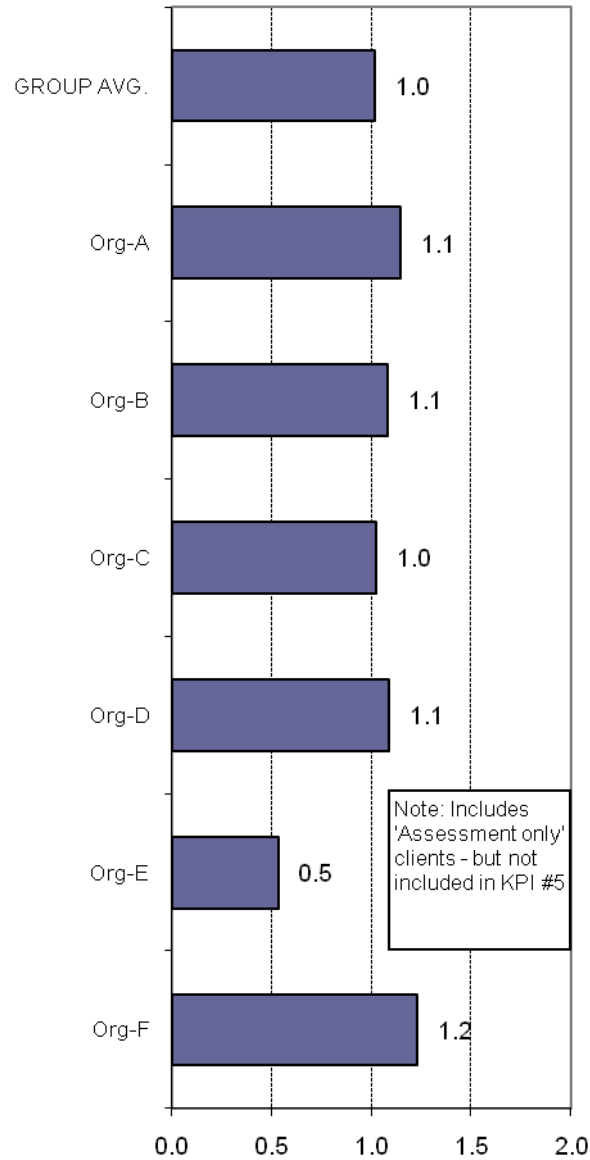
AMHOCN

"Sharing Information to Improve Outcomes"

Average contacts per treatment day



Average contact hours per treatment day, 2006-07



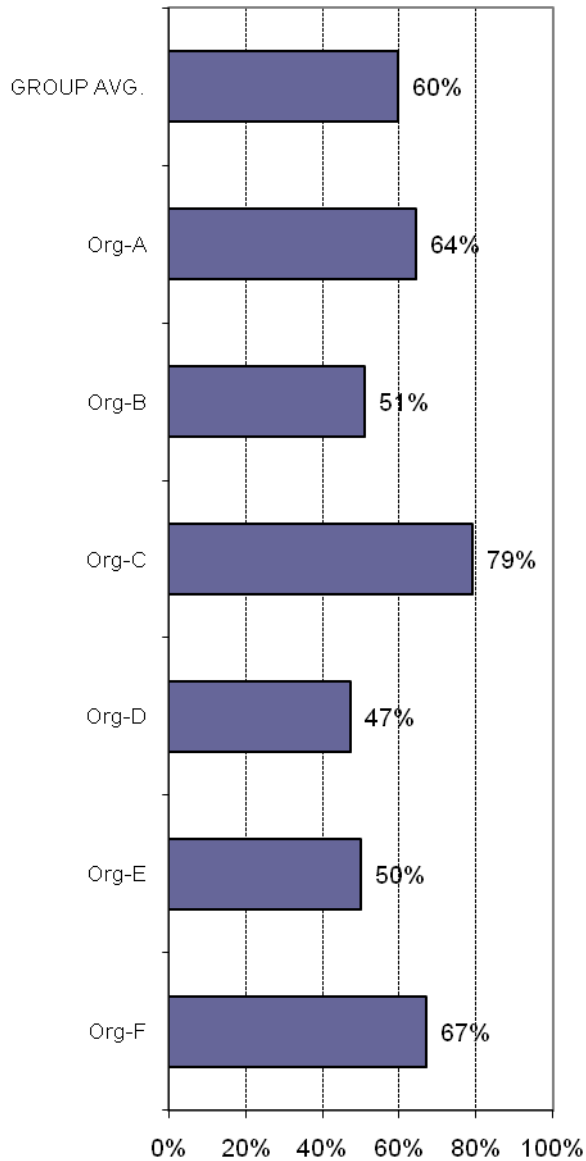
A joint Australian, State and Territory Government Initiative



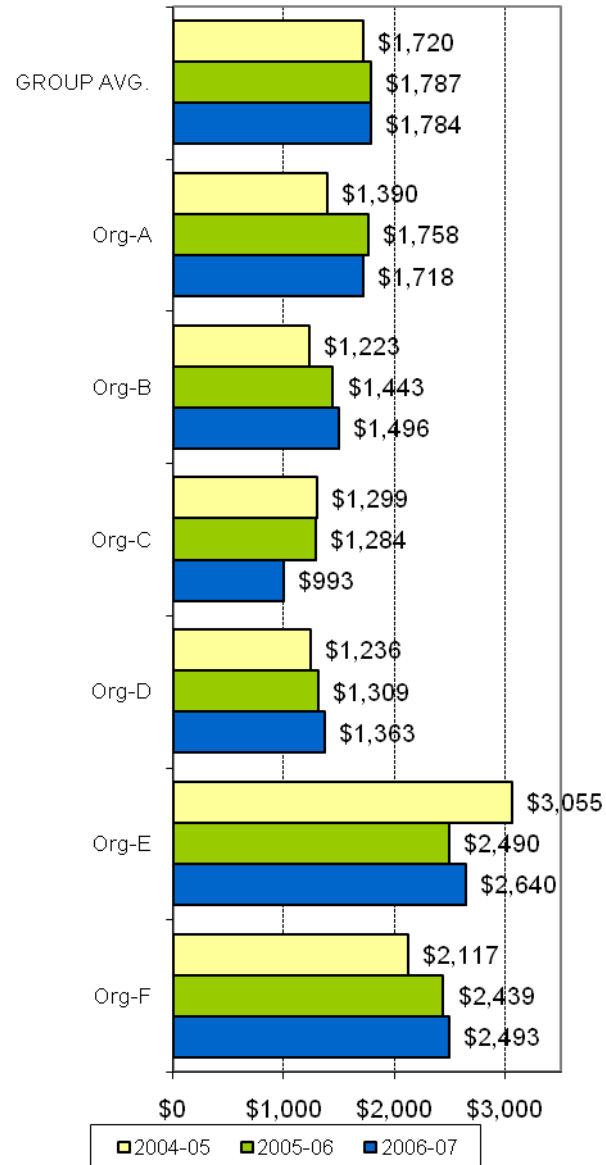
AMHOCN

"Sharing Information to Improve Outcomes"

Client participation time as a per cent of total reported contact time, 2006-07



KPI #6 Average cost per 3 month period of community care



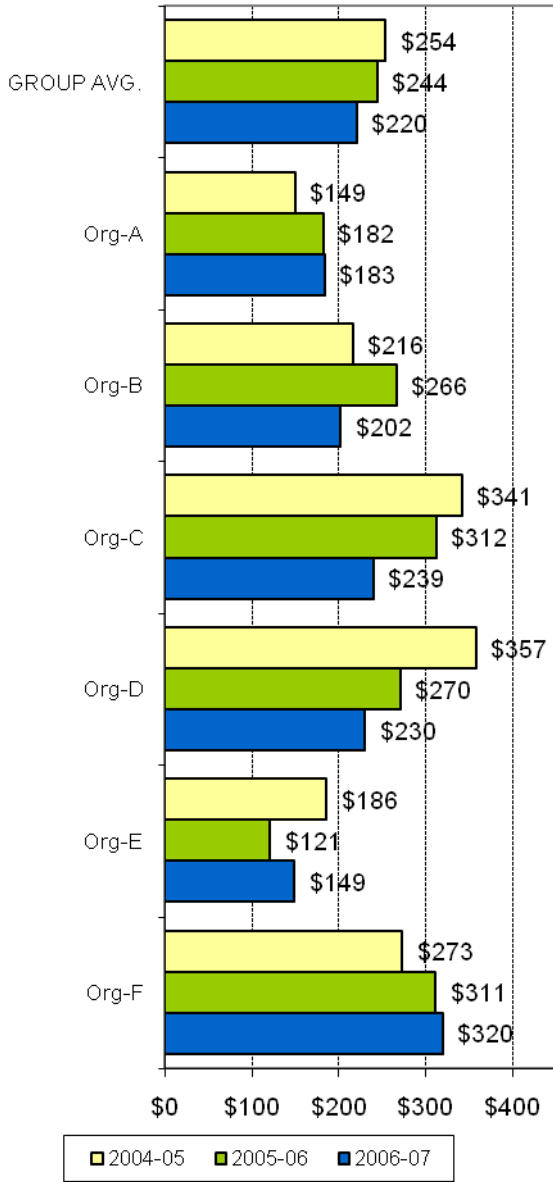
A joint Australian, State and Territory Government Initiative



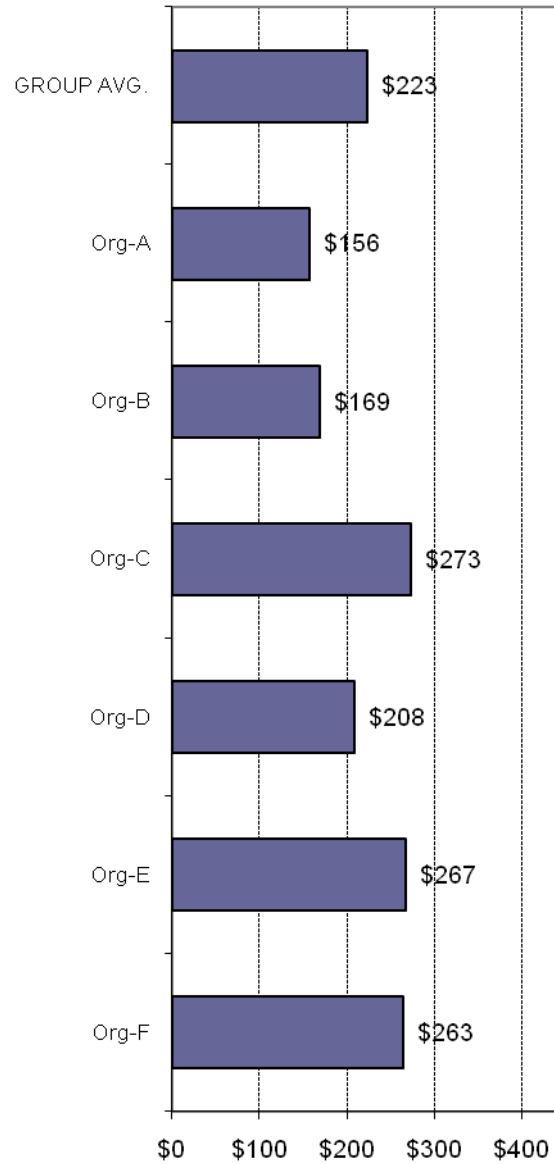
AMHOCN

"Sharing Information to Improve Outcomes"

Average cost per community treatment day



Average cost per contact hour, 2006-07



A joint Australian, State and Territory Government Initiative

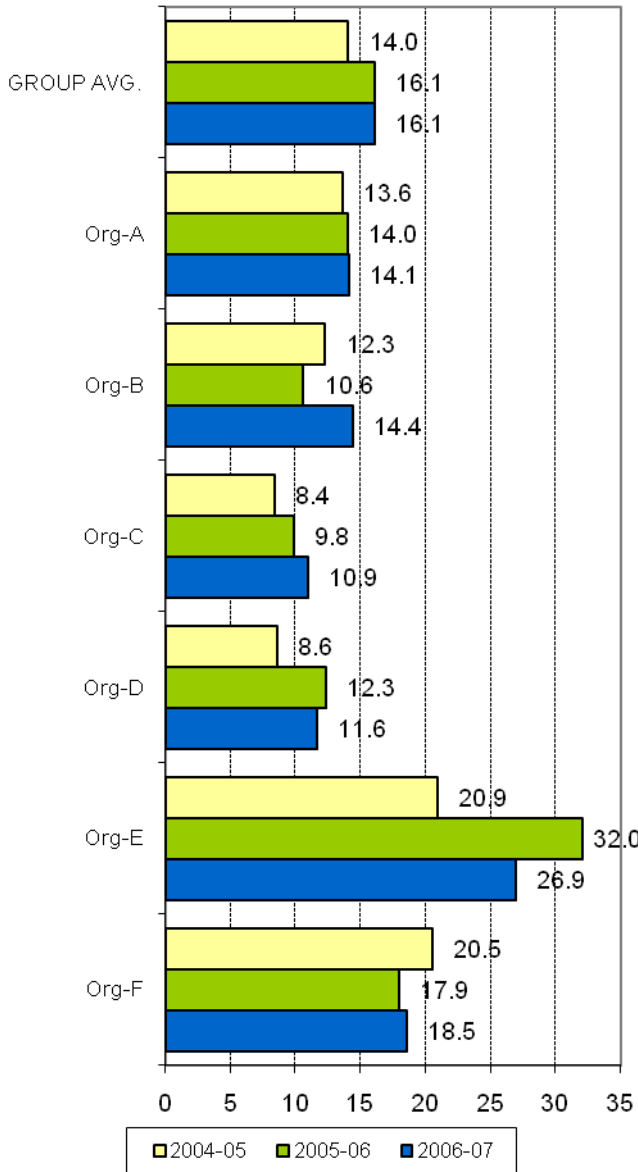


AMHOCN

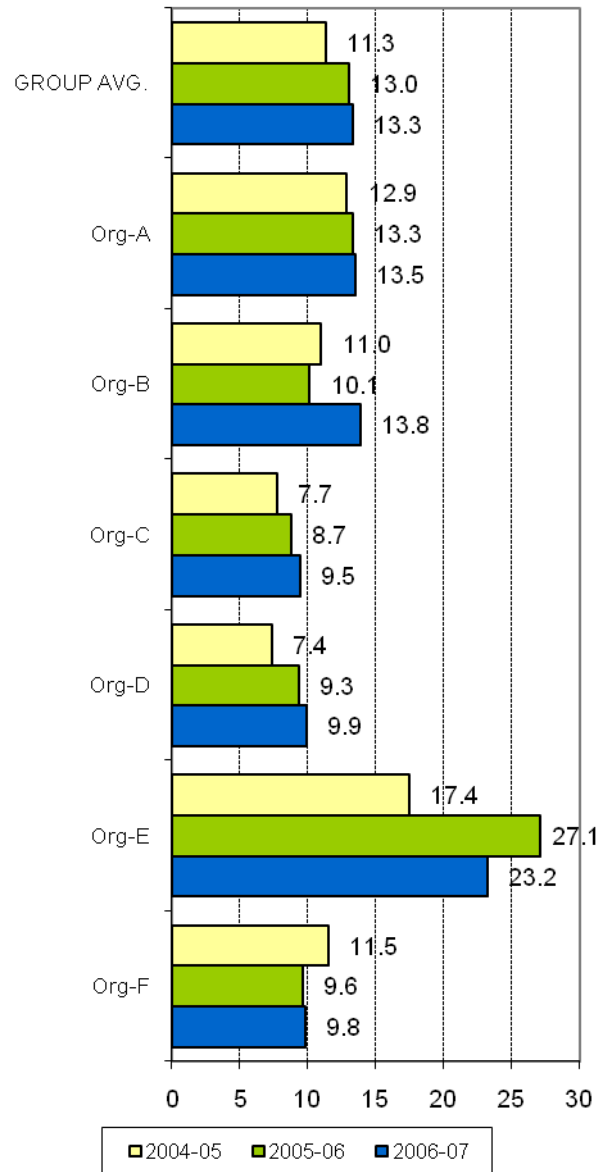
"Sharing Information to Improve Outcomes"

THEME 3: PRODUCTIVITY AND ACTIVITY OF AMBULATORY SERVICES

Av. weekly contacts per direct care FTE



Av. weekly treatment days per direct care FTE (approx = N patients per week per FTE)



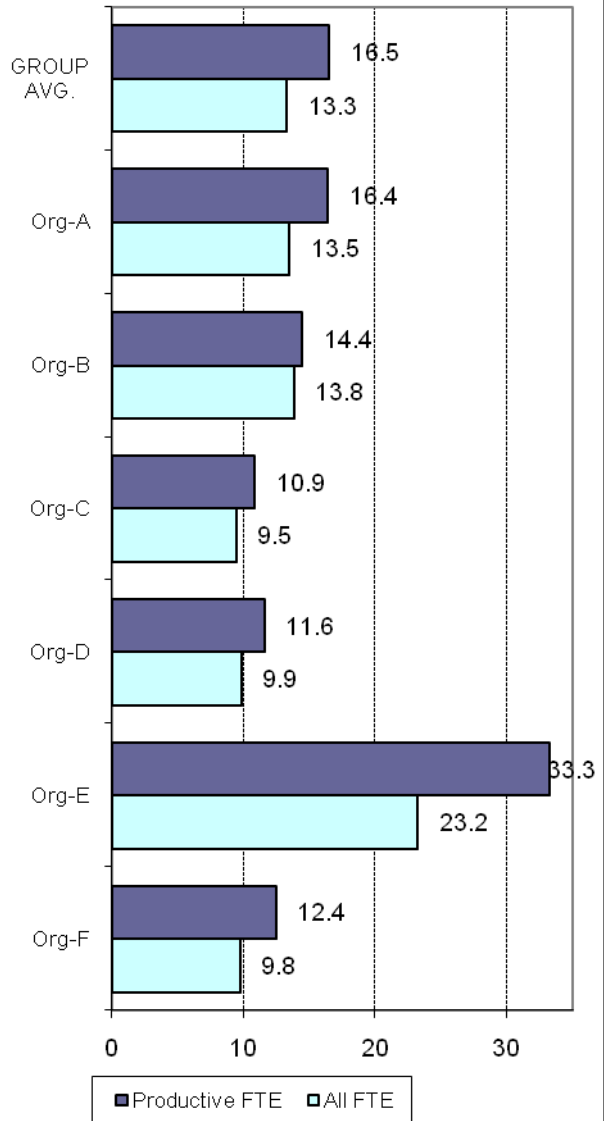
A joint Australian, State and Territory Government Initiative



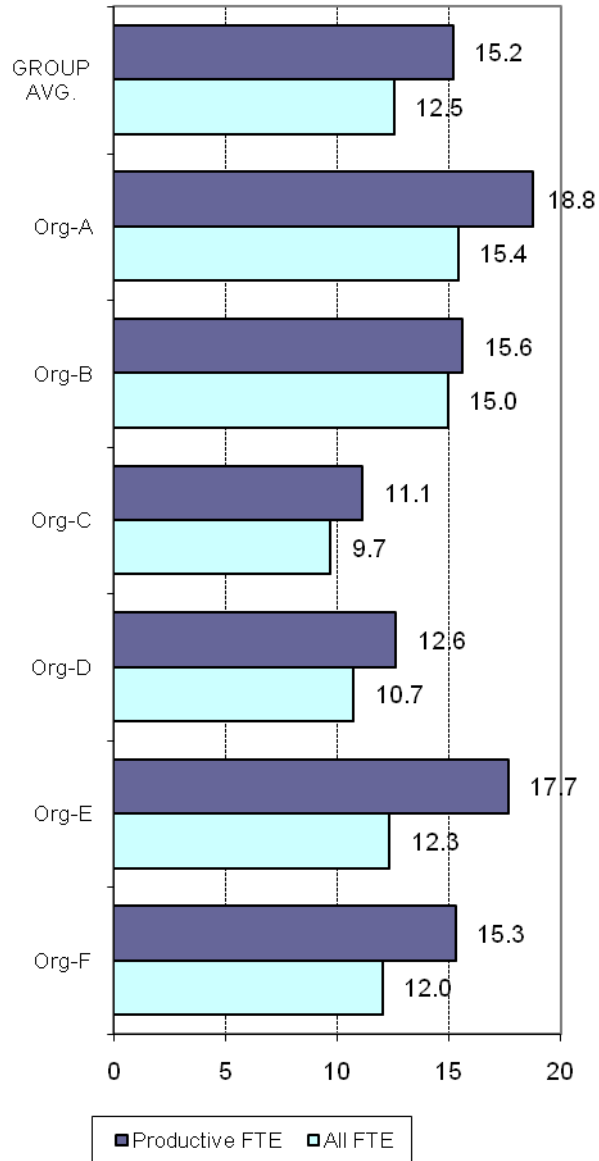
AMHOCN

"Sharing Information to Improve Outcomes"

Av. weekly treatment days per direct care FTE - Productive vs All FTE, 2006-07



Av. weekly contact hours per direct care FTE - Productive vs All FTE, 2006-07



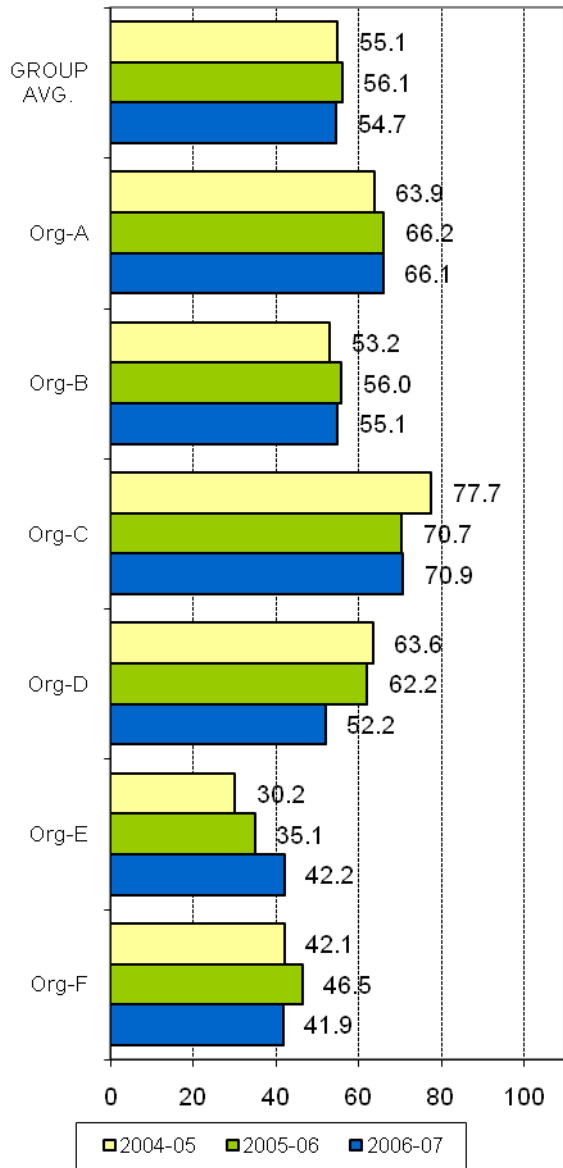
A joint Australian, State and Territory Government Initiative



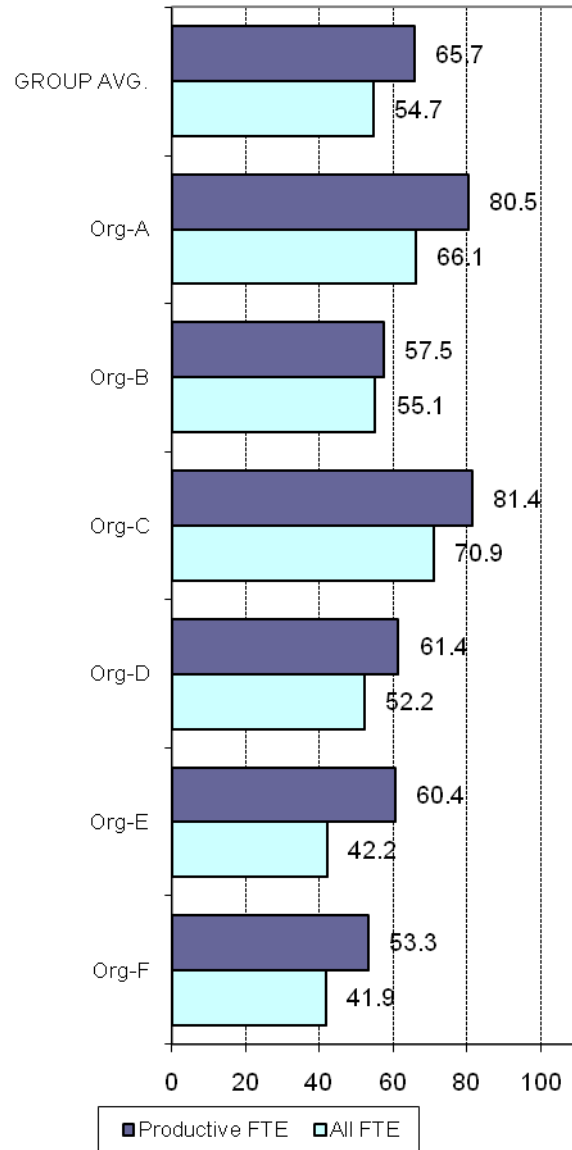
AMHOCN

"Sharing Information to Improve Outcomes"

Av. number of people seen per year per ambulatory services direct care FTE



Av. number of people seen per year per ambulatory services direct care FTE - All vs Productive FTE, 2006-07



A joint Australian, State and Territory Government Initiative

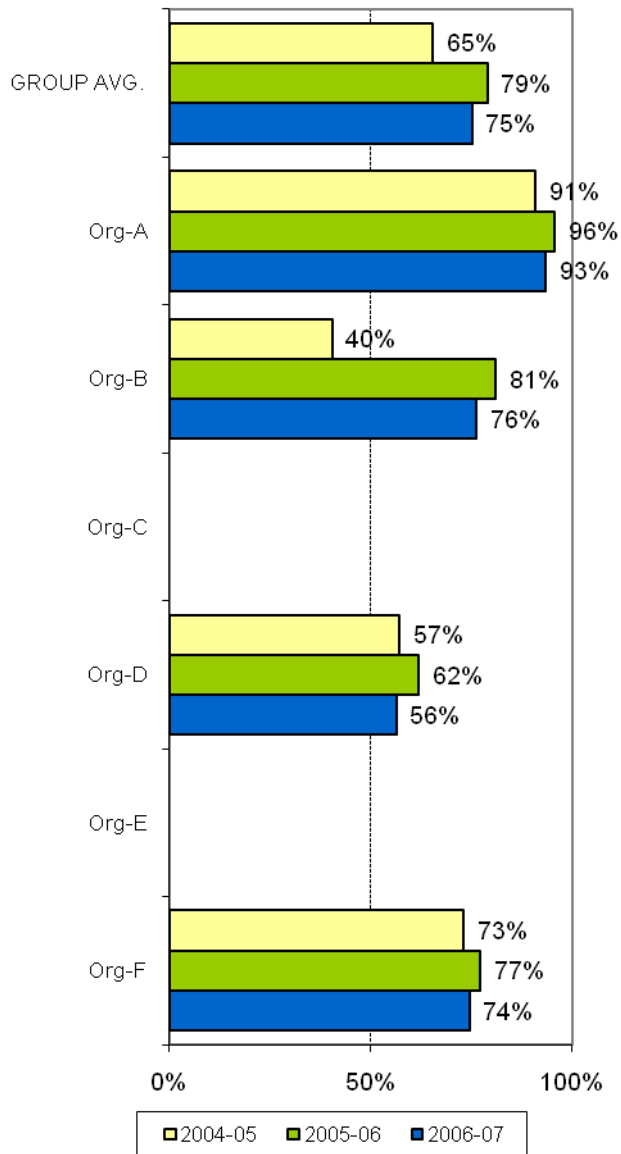


AMHOCN

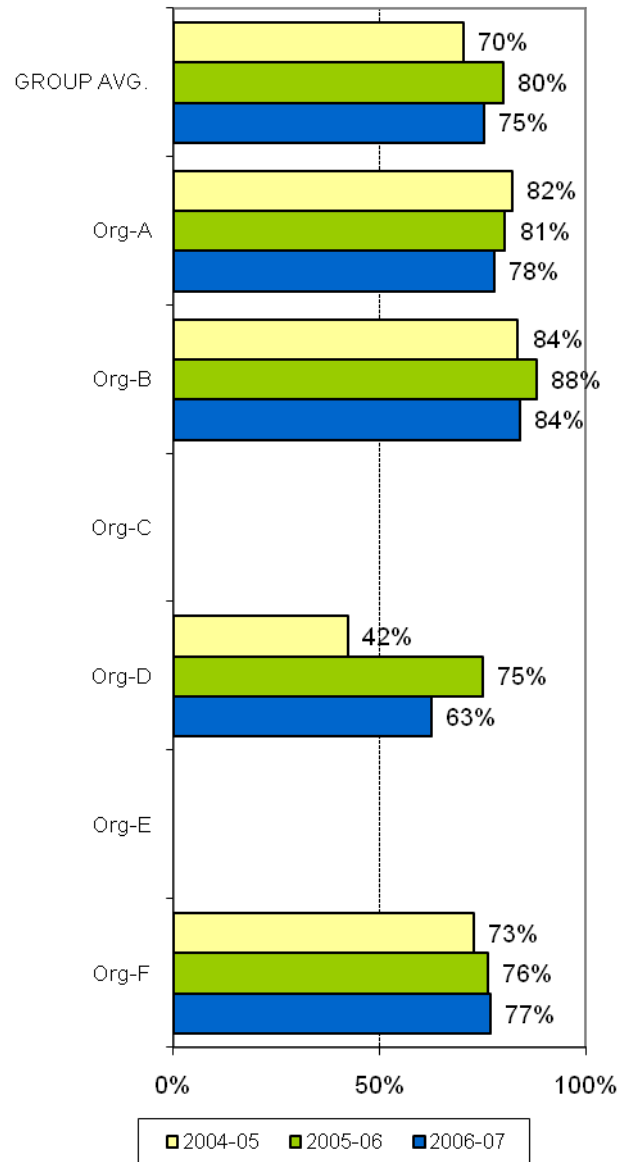
"Sharing Information to Improve Outcomes"

THEME 4: CONTINUITY OF CARE

KPI#11 Pre admission community care



KPI#12 Post discharge community care



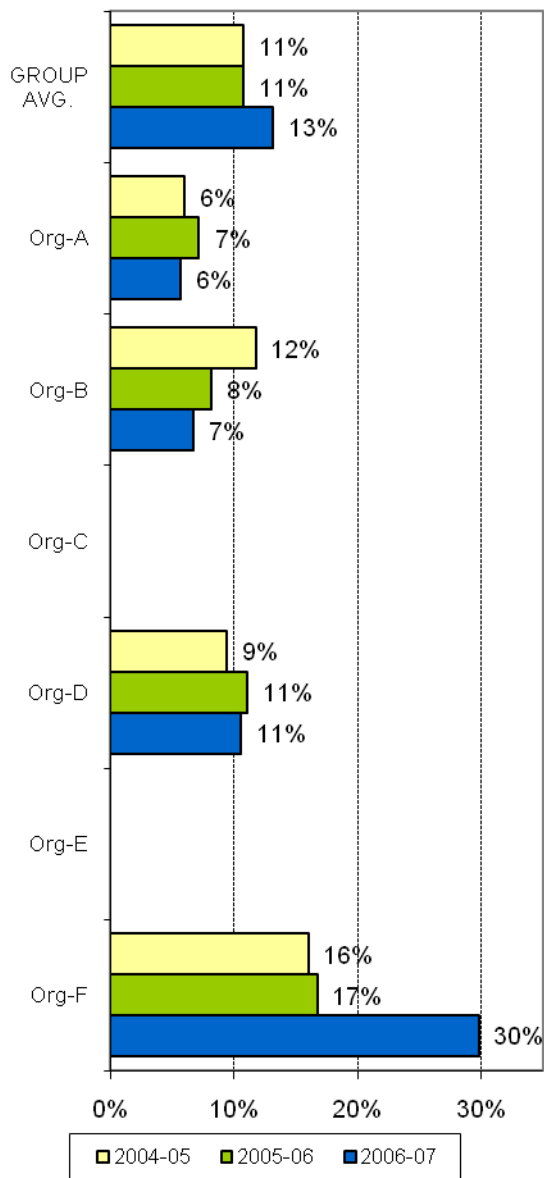
A joint Australian, State and Territory Government Initiative



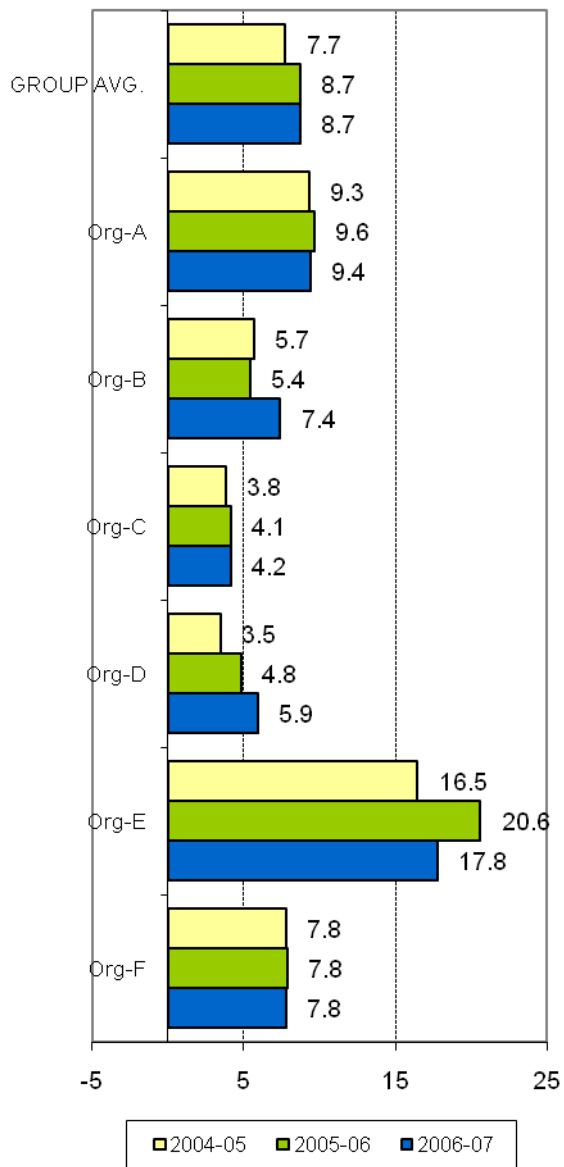
AMHOCN

"Sharing Information to Improve Outcomes"

KPI#1 28-day readmission rate



KPI#5 Average treatment days per 3 month period of community care



A joint Australian, State and Territory Government Initiative

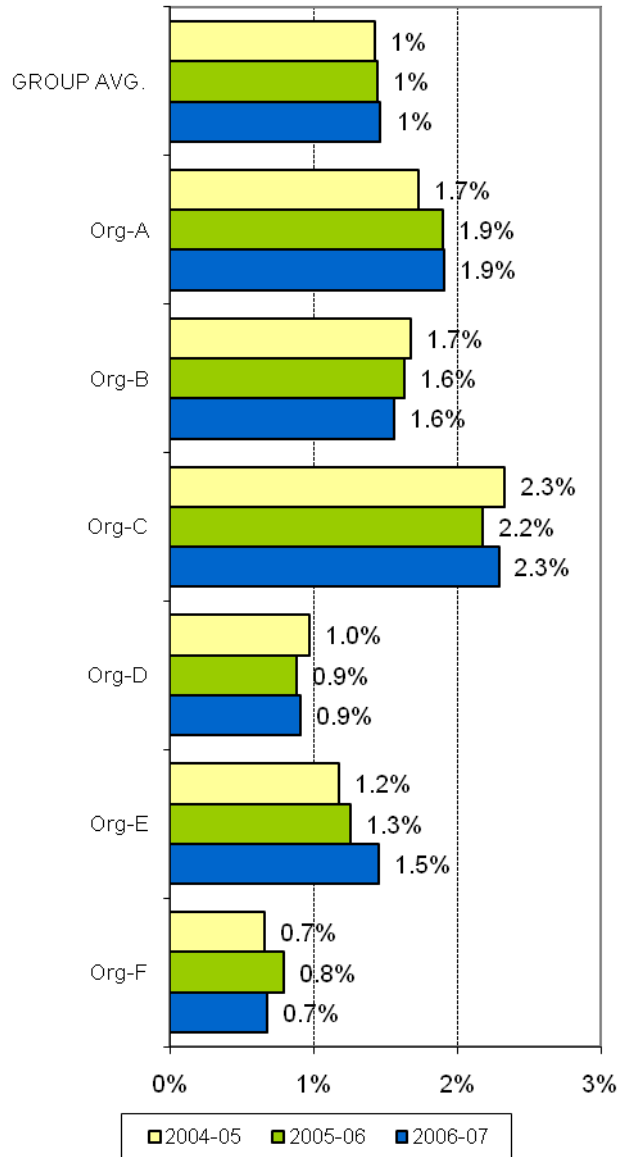


AMHOCN

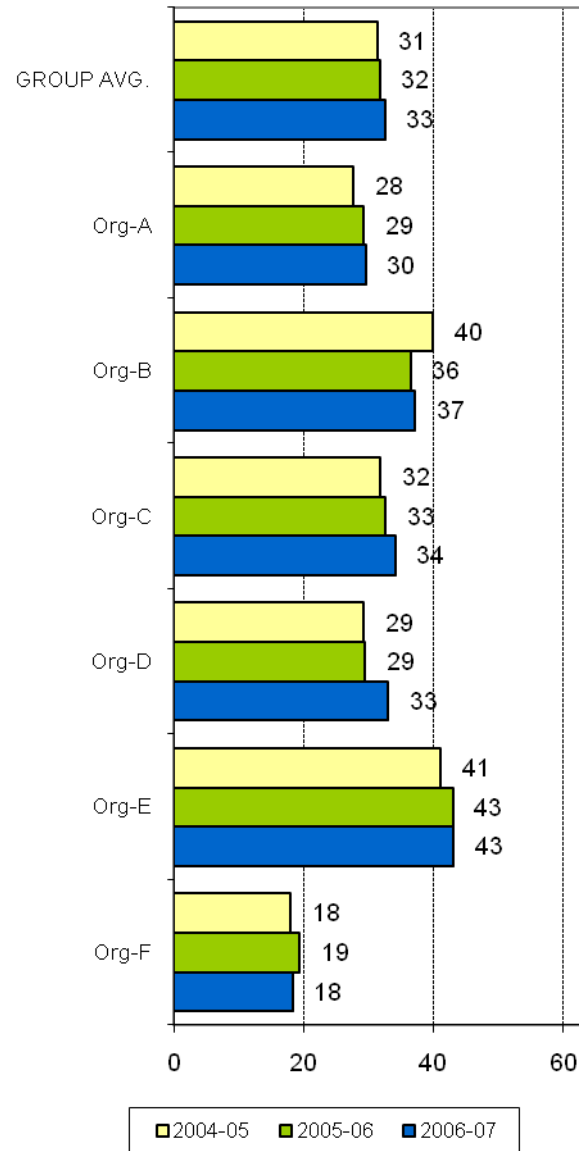
"Sharing Information to Improve Outcomes"

THEME 5: ACCESS TO AMBULATORY CARE

KPI#7a % target population receiving ambulatory services



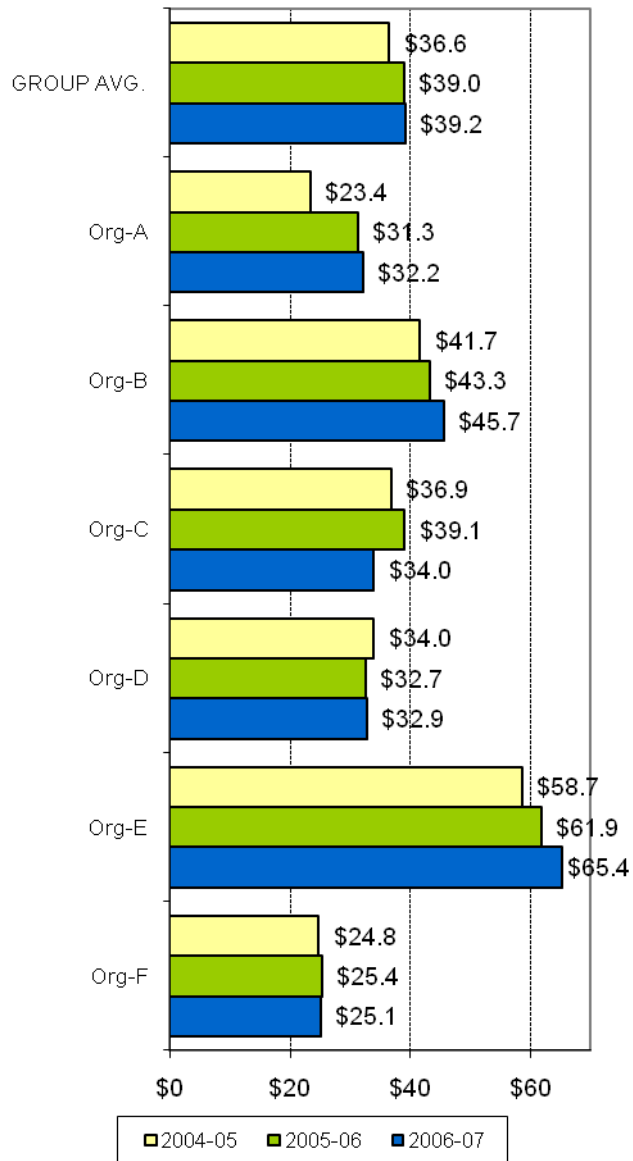
Ambulatory Direct Care FTE per 100,000 population



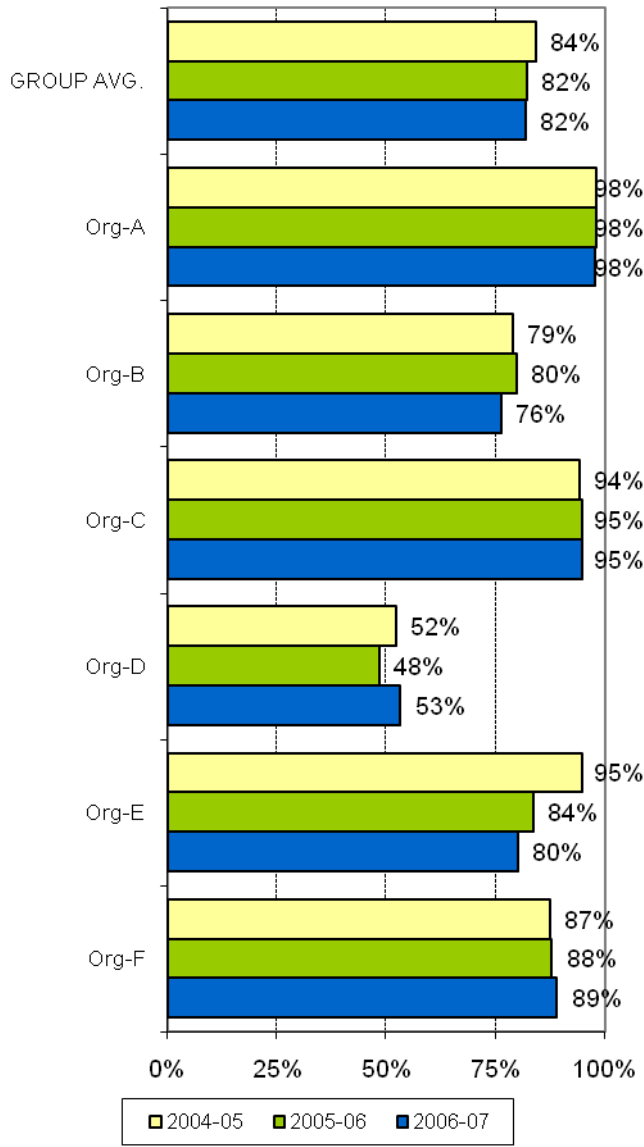
AMHOCN

"Sharing Information to
Improve Outcomes"

KPI#10a Area per capita resources - Ambulatory services



Age-specific target group as % of total people seen by ambulatory services



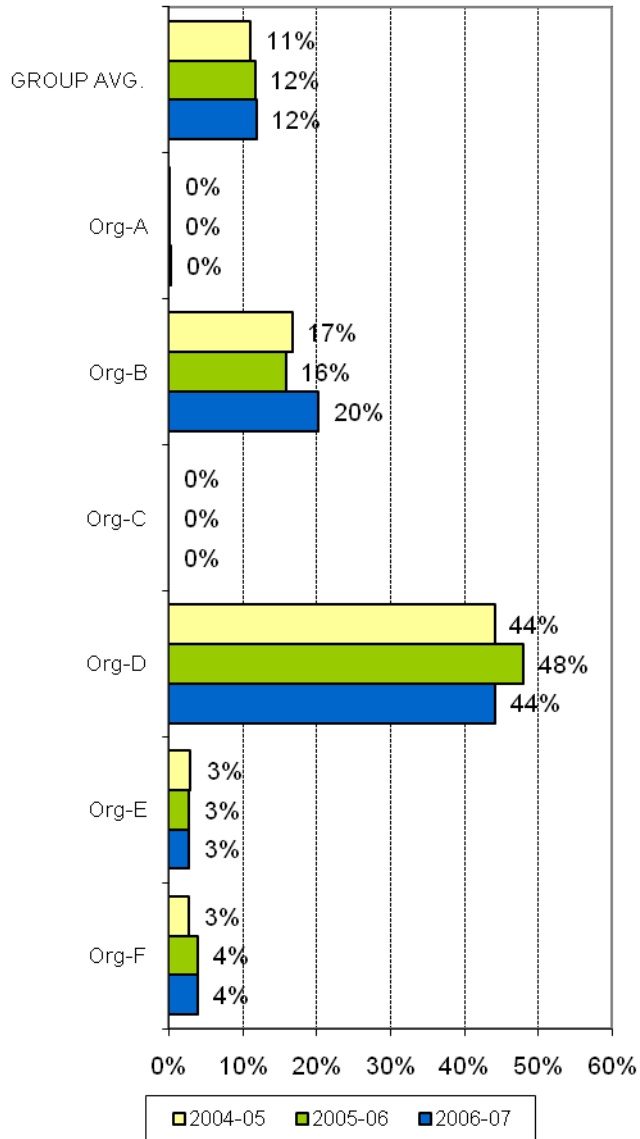
A joint Australian, State and Territory Government Initiative



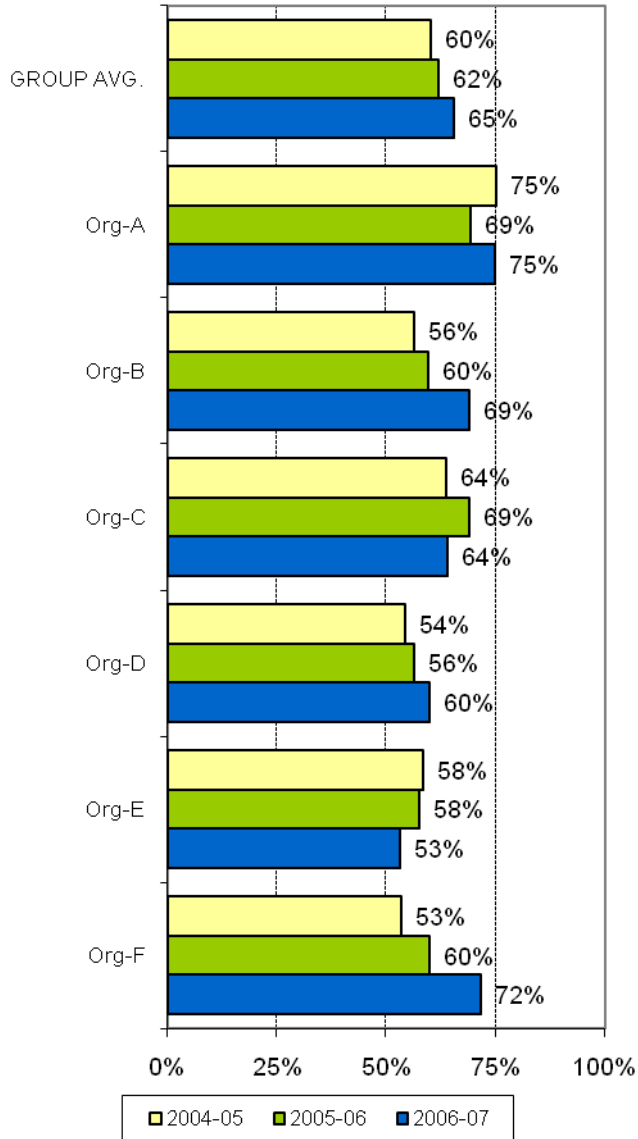
AMHOCN

"Sharing Information to Improve Outcomes"

Percent of people seen by ambulatory services who reside external to catchment



KPI#9 New client index 2006-07 (Definition A)



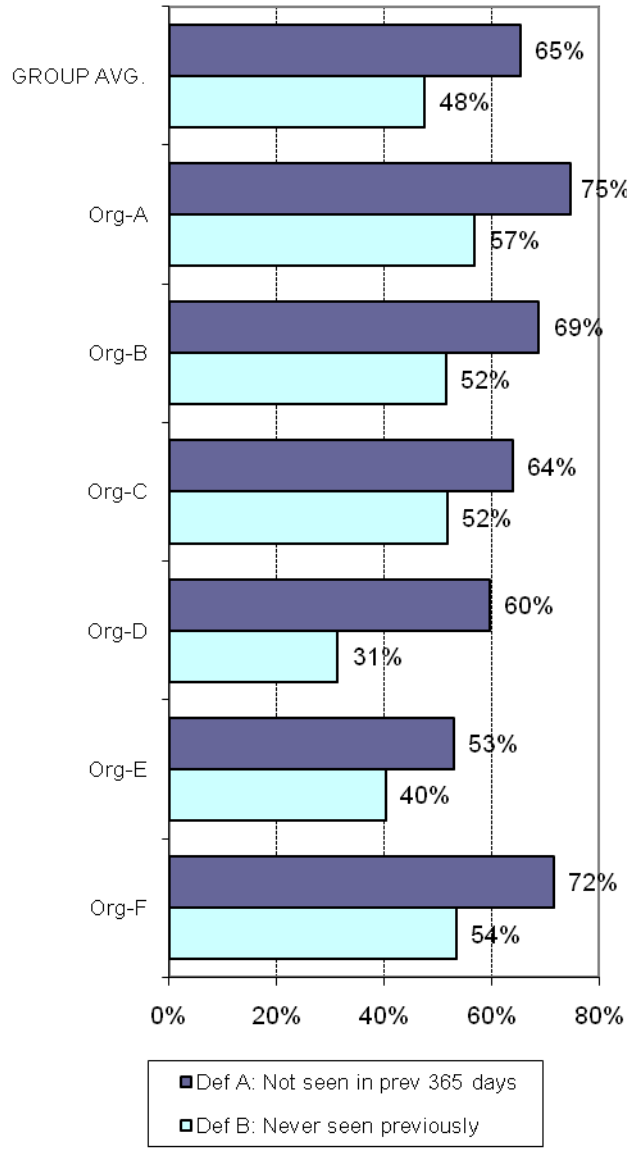
A joint Australian, State and Territory Government Initiative



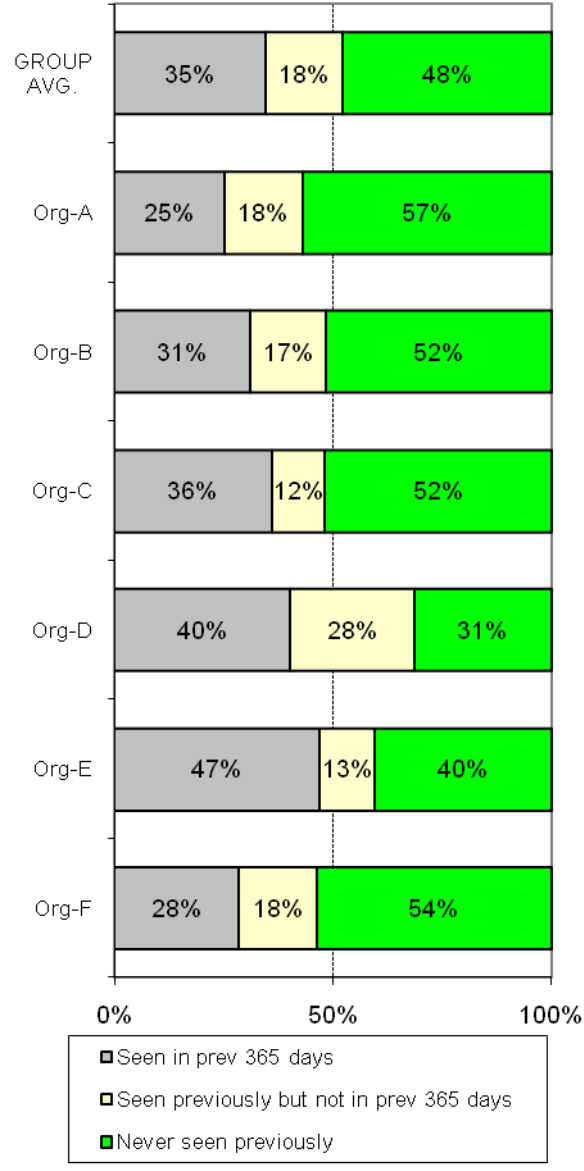
AMHOCN

"Sharing Information to Improve Outcomes"

**KPI#9 New client index 2006-07
Definition A and B compared**



**KPI#9 New client index 2006-07
(Alternative presentation)**



A joint Australian,
State and Territory
Government Initiative

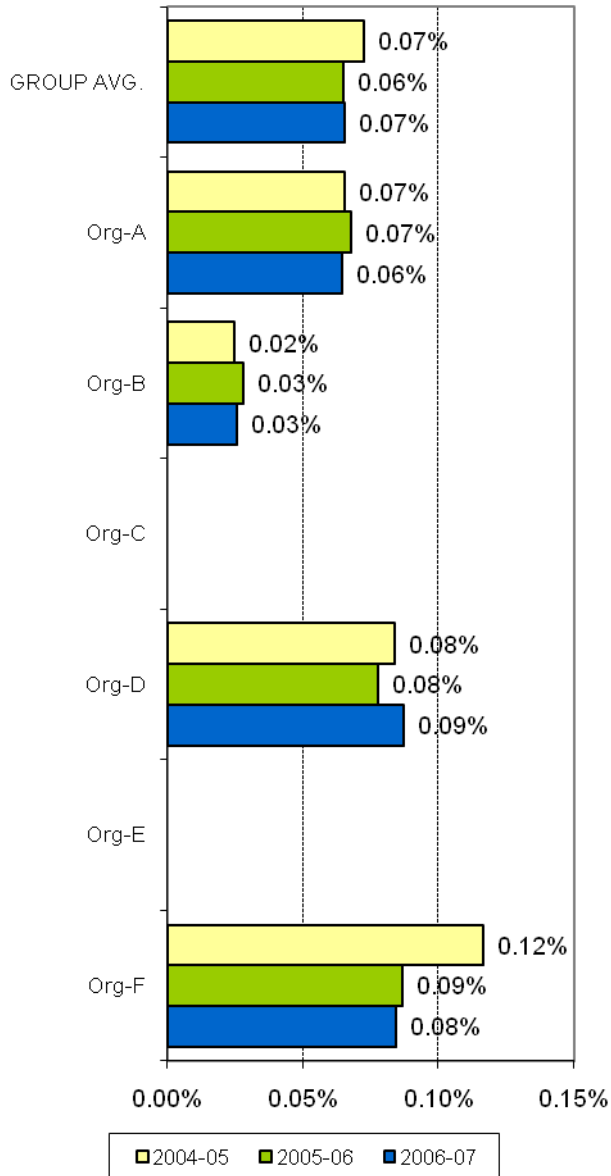


AMHOCN

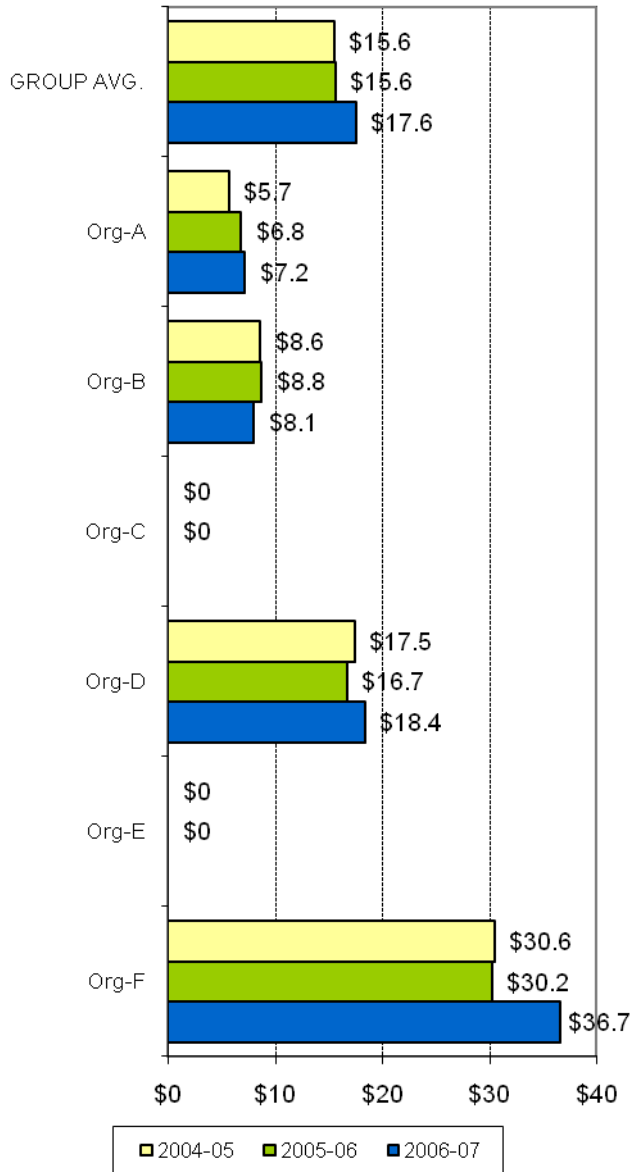
"Sharing Information to
Improve Outcomes"

THEME 6: ACCESS TO ACUTE INPATIENT CARE

KPI#7b % target population receiving inpatient services



KPI#10b Area per capita resources - Inpatient services



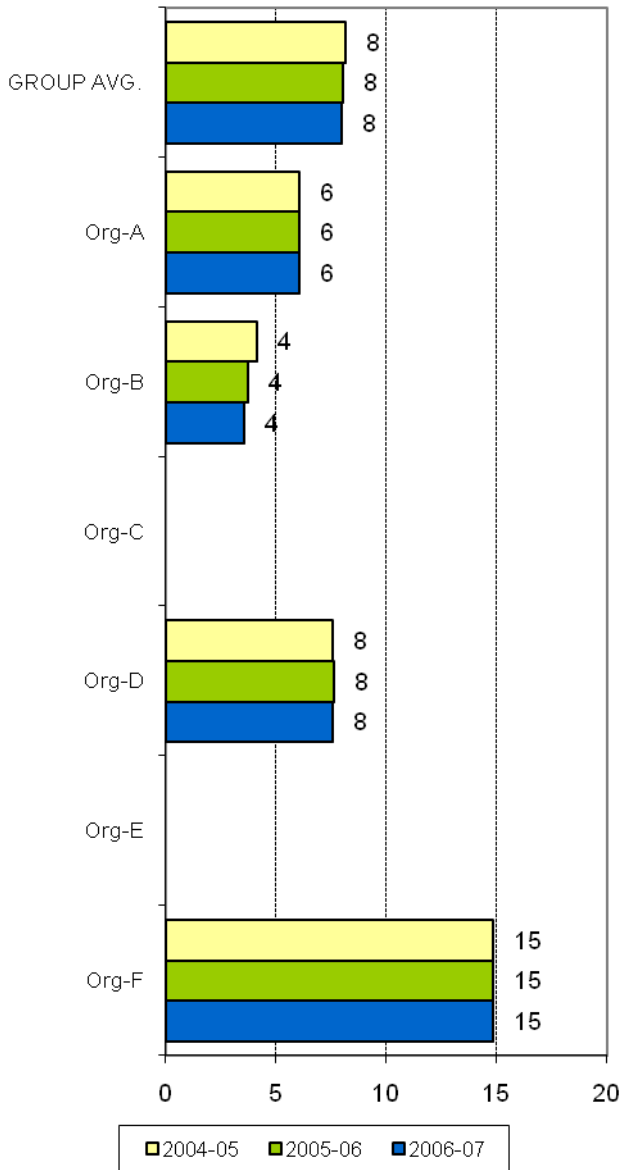
A joint Australian, State and Territory Government Initiative



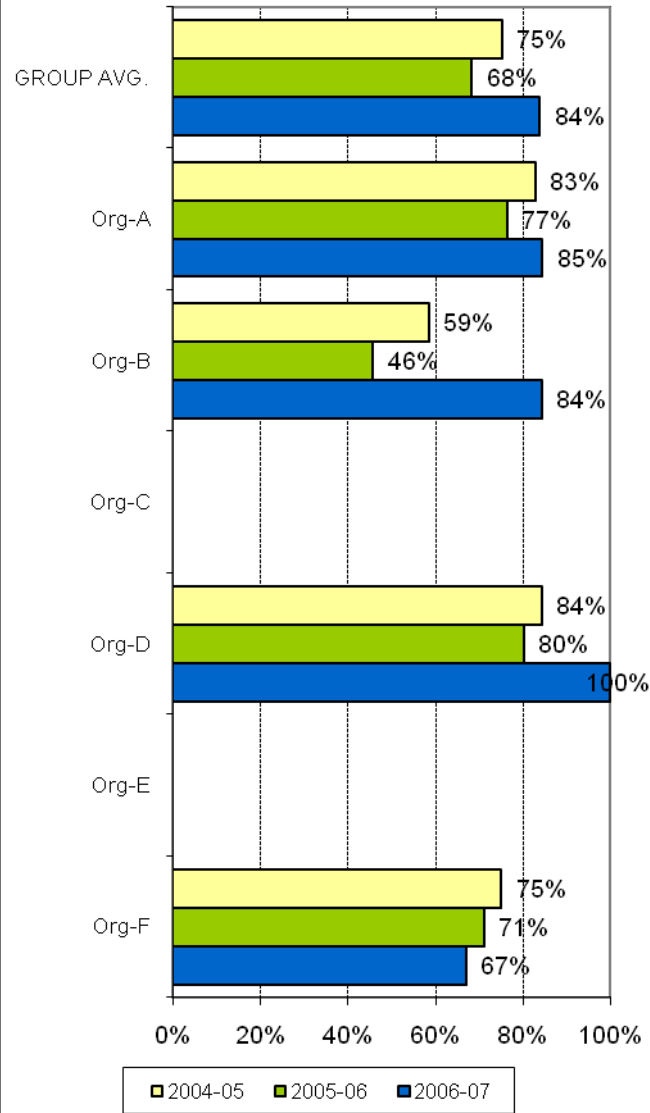
AMHOCN

"Sharing Information to Improve Outcomes"

Acute beds per 100,000



**KPI#8 Local access to inpatient care
(% total area overnight separations managed by your organisation)**



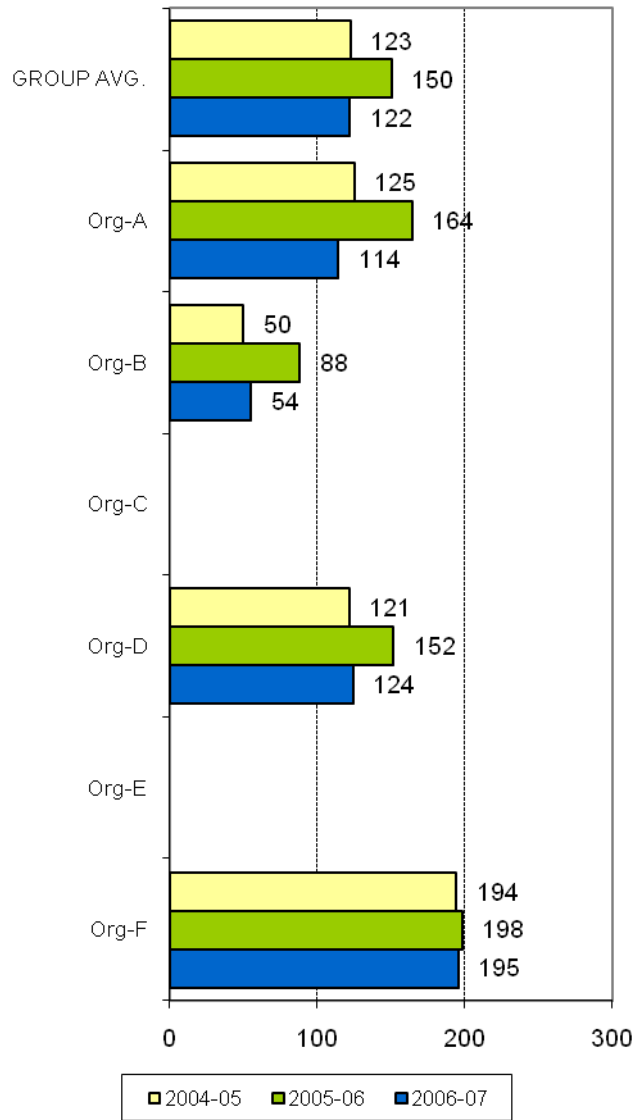
A joint Australian,
State and Territory
Government Initiative



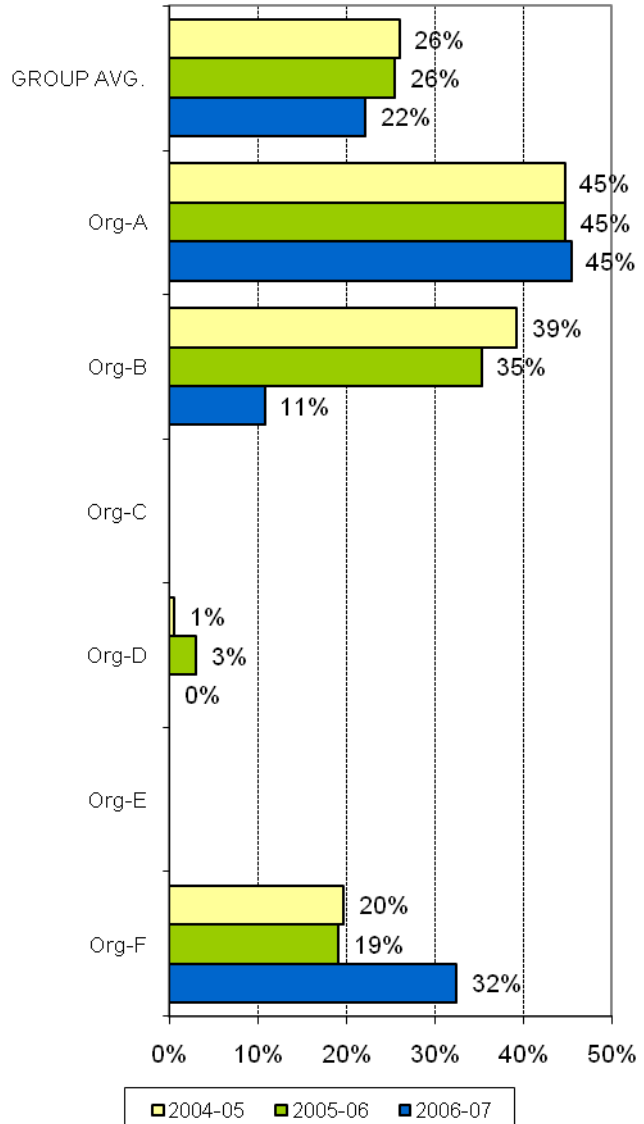
AMHOCN

"Sharing Information to
Improve Outcomes"

Overnight acute separations per 100,000 population from inpatient catchment target population



% target age-group separations from your unit of people who reside outside of inpatient catchment area



A joint Australian, State and Territory Government Initiative

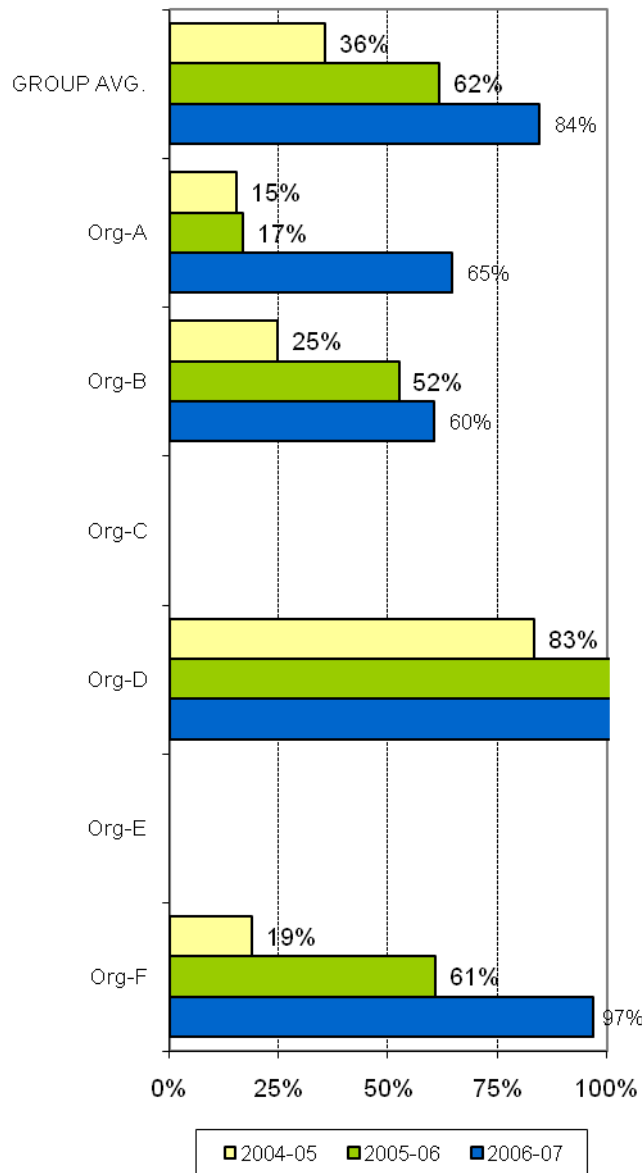


AMHOCN

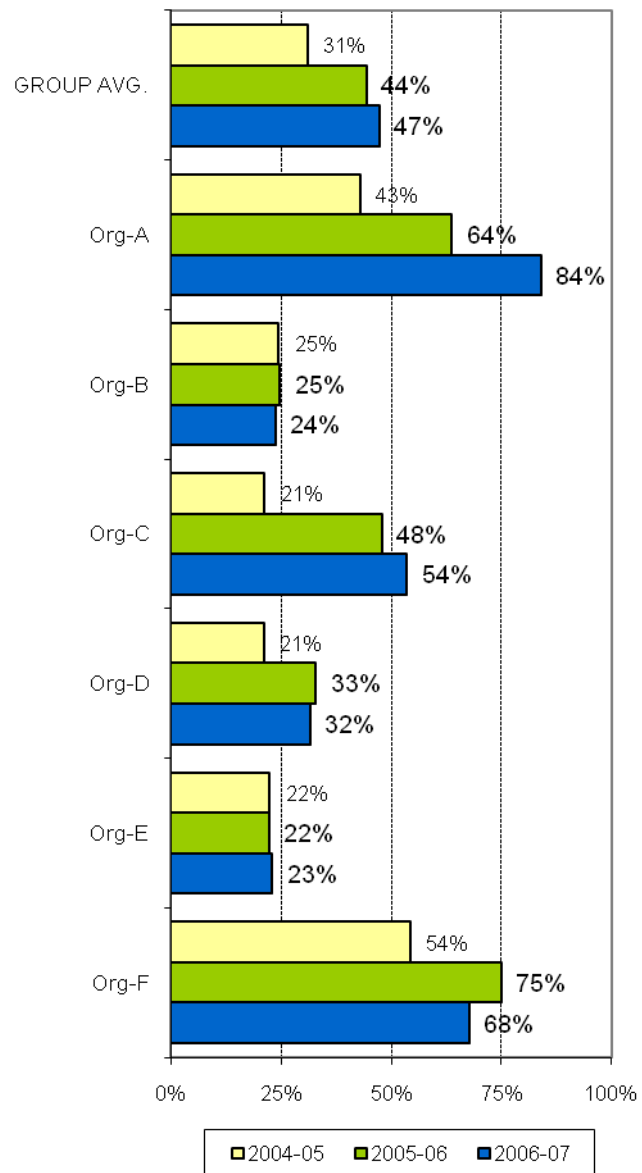
"Sharing Information to Improve Outcomes"

THEME 7: CAPABILITY

KPI #13 Outcomes readiness - Inpatient

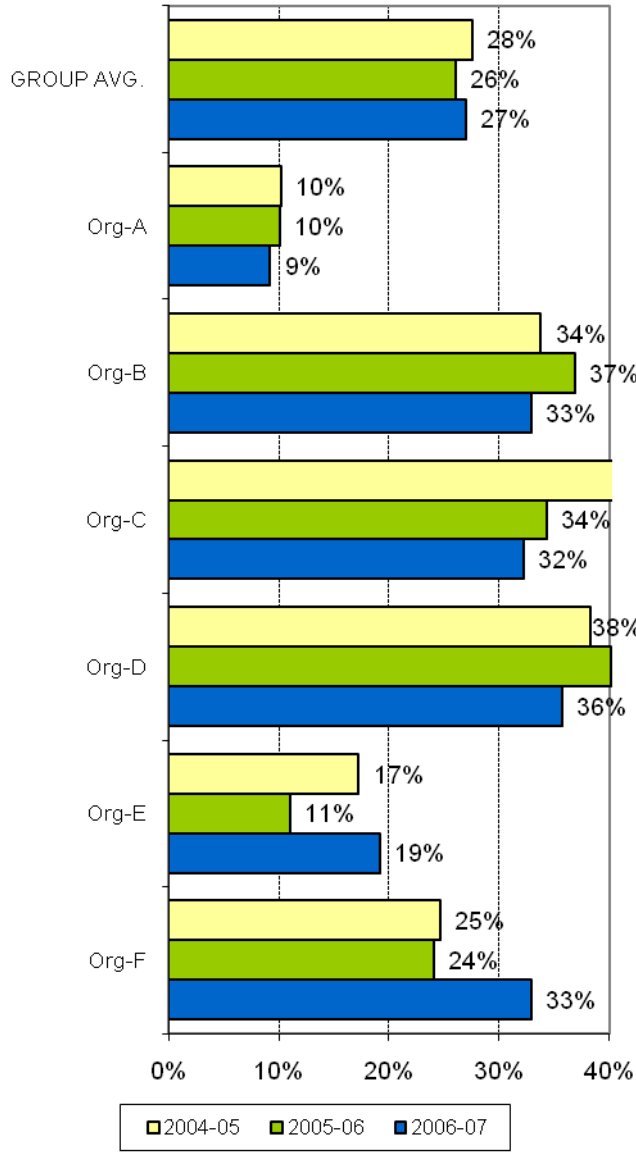


KPI #13 Outcomes readiness - Ambulatory

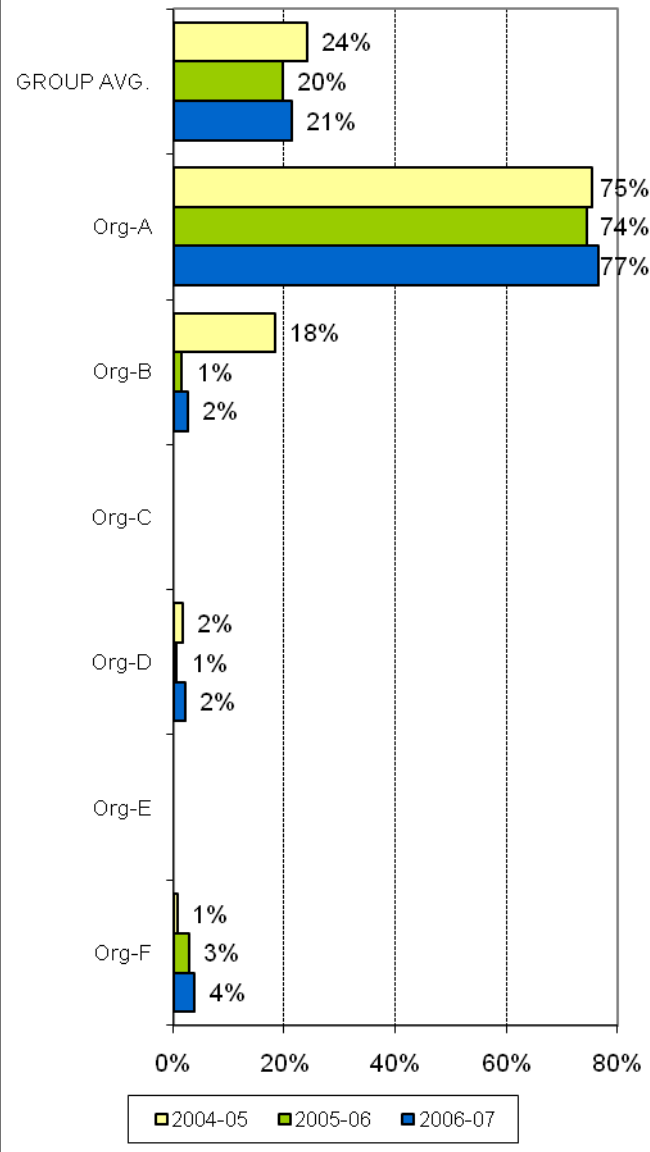


UNGROUPED SUPPLEMENTARY INDICATORS

' Assessment only' episodes (1 treatment day) as percent of total 3 month episodes



Same day separations as percent of total acute separations



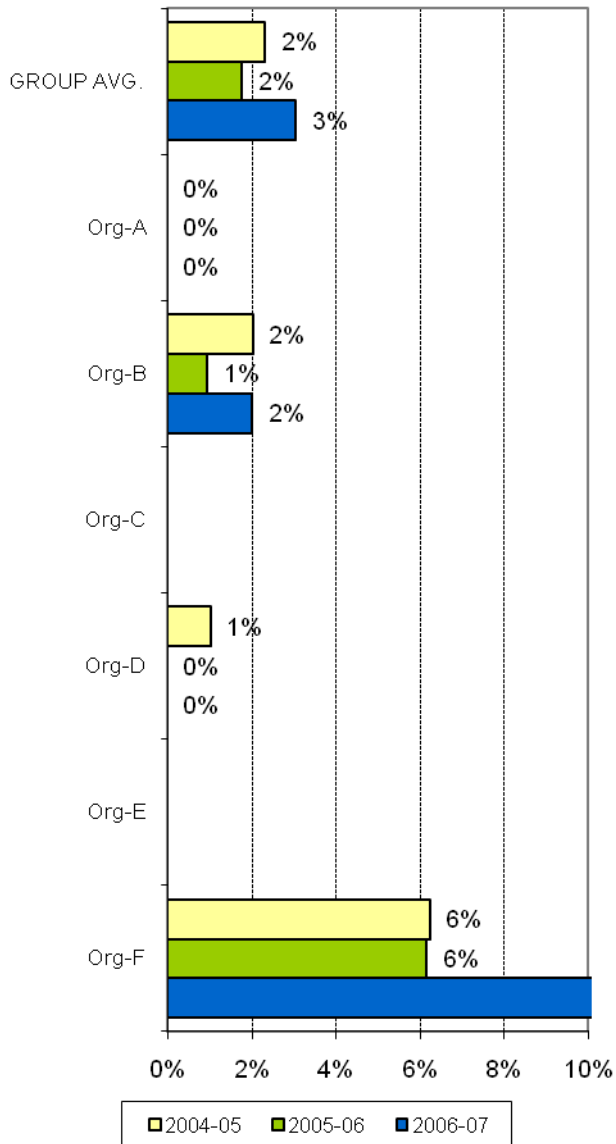
A joint Australian, State and Territory Government Initiative



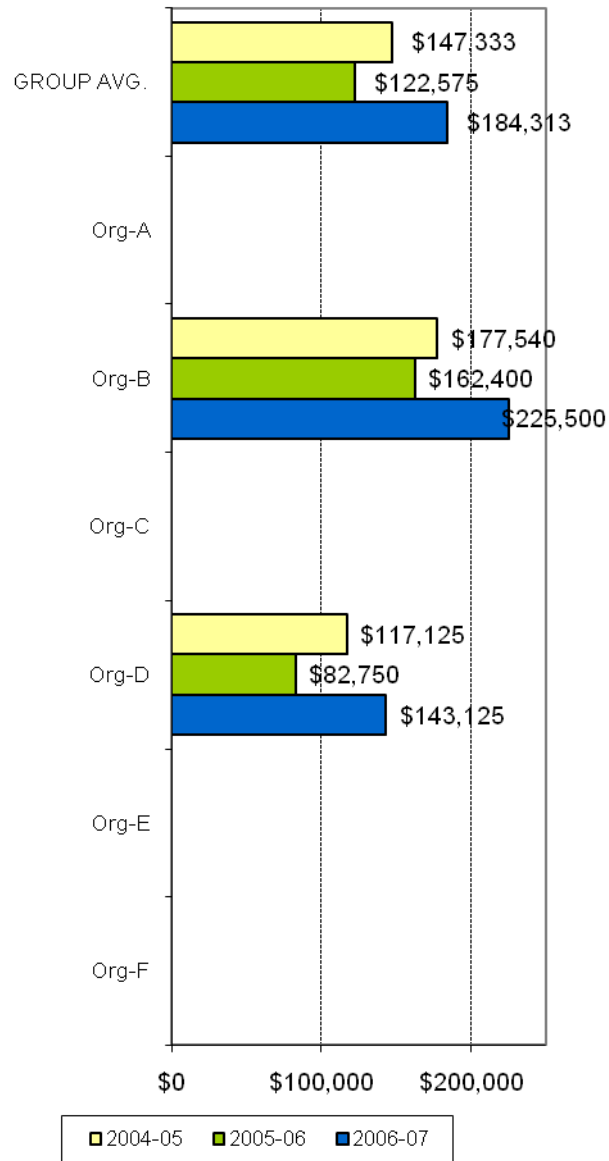
AMHOCN

"Sharing Information to Improve Outcomes"

Percent overnight acute separations out of scope



Av. Annual cost per residential bed



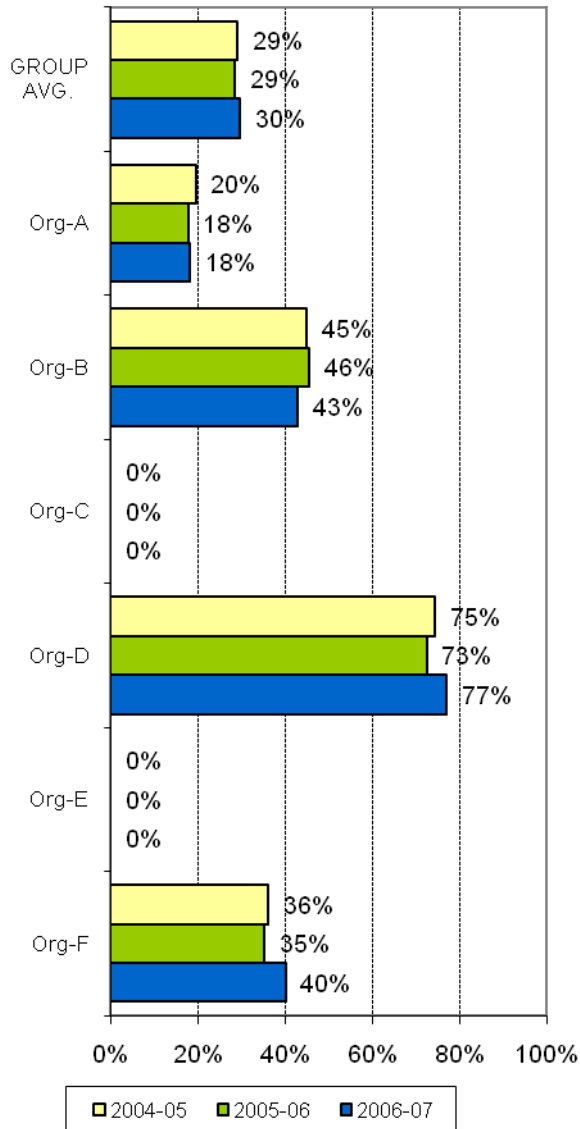
A joint Australian, State and Territory Government Initiative



AMHOCN

"Sharing Information to Improve Outcomes"

Bed-based services as percent of total expenditure



A joint Australian, State and Territory Government Initiative



AMHOCN

"Sharing Information to Improve Outcomes"