

There's more to this than you realise....

No. 6

AMHOCN want to let you know more about the results of the National Outcomes and Casemix Collection (NOCC). The AMHOCN web Decision Support Tool (wDST) and the AMHOCN Reports Portal provide different ways of exploring the NOCC data. Visit the [AMHOCN website](#) to learn more about the NOCC.

The charts presented here from the wDST show the frequency distribution of total HoNOS 65+ change scores, between admission and discharge, in inpatient settings and also ambulatory settings.

The chart below for **Older Person Inpatient Services** shows that: 85% of consumers improve, 10.5% deteriorate and 4.5% of consumers' scores are unchanged between admission and discharge. This chart can be replicated by following this link: [Older Person Inpatient HoNOS 65+](#) total score change admission to discharge and selecting the variables displayed below. How does your service compare?

Jurisdiction National
 Age Group Older Person
 Measure HoNOS65+
 View Total Score
 Level of Analysis Episode Transition
 Transition Admission/Discharge
 Service Setting Inpatient
 Financial Year 2019-2020, 2020-2021, 2021-2022

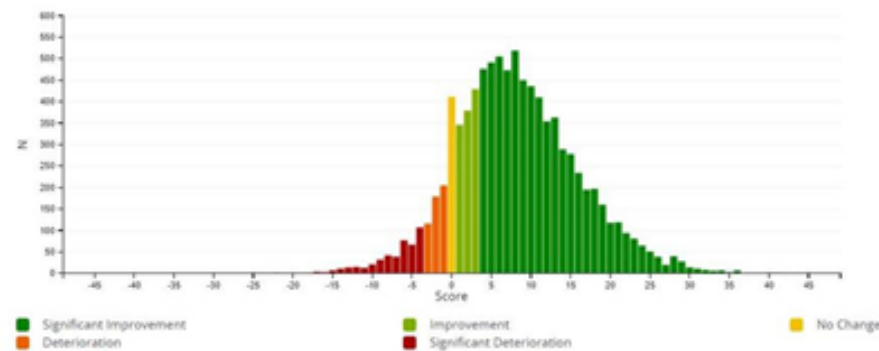
Summary

N	Mean	Std Dev
9068	8.2	7.8

Percentiles

10	25	50	75	90
-1.0	3.0	8.0	13.0	18.0

Chart



All data reported from 1st of July, 2019 to 30th of June, 2022.

This chart below for **Older Person Ambulatory Services** shows that: 72% of consumers improve, 17% deteriorate and 11% of consumers' scores are unchanged between admission and discharge. This chart can be replicated by following this link: [Older Person Ambulatory HoNOS 65+](#) total score change admission to discharge and selecting the variables displayed below. How does your service compare?



You have control and can run any query you like and get any view of the NOCC that you want. Why not answer your questions today by exploring the reporting of the NOCC?