



There's more to this than you realise....

No. 5

AMHOCN want to let you know more about the results of the National Outcomes and Casemix Collection (NOCC). The AMHOCN web Decision Support Tool (wDST) and the AMHOCN Reports Portal provide different ways of exploring the NOCC data. Visit the [AMHOCN website](#) to learn more about the NOCC.

The charts presented here from the wDST show the frequency distribution of total HoNOSCA change scores, between admission and discharge, in both Child and Adolescent Inpatient settings and also Ambulatory settings.

The chart below for **Child and Adolescent Inpatient services** shows that: 74% of consumers improve, 19% deteriorate and 7% of consumers' scores are unchanged between admission and discharge. This chart can be replicated by following this link: [Child and Adolescent Inpatient HoNOSCA total score change admission to discharge](#) and selecting the variables displayed below. How does your service compare?

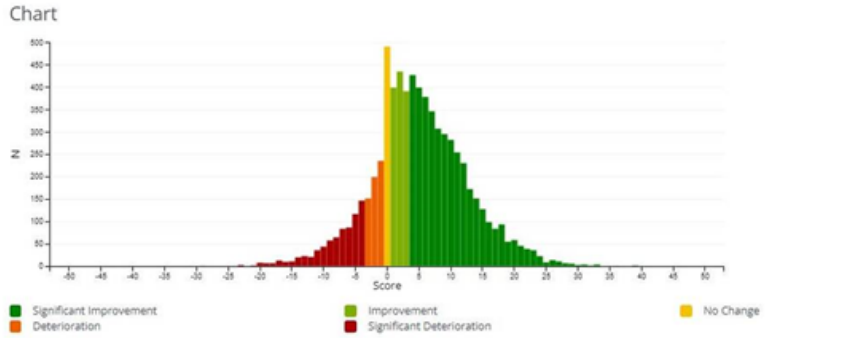
Jurisdiction National
Age Group Child and Adolescent
Measure HoNOSCA
View Total Score
Level of Analysis Episode Transition
Transition Admission/Discharge
Service Setting Inpatient
Financial Year 2019-2020, 2020-2021, 2021-2022

Summary

| N | Mean | Std Dev |
|------|------|---------|
| 7050 | 5.0 | 7.6 |

Percentiles

| 10 | 25 | 50 | 75 | 90 |
|------|-----|-----|------|------|
| -4.0 | 0.0 | 5.0 | 10.0 | 15.0 |



All data reported from 1st of July, 2019 to 30th of June, 2022.

This chart below for **Child and Adolescent Ambulatory services** shows that: 72% of consumers improve, 15% deteriorate and 13% of consumers' scores are unchanged between admission and discharge. This chart can be replicated by following this link: [Child and Adolescent Ambulatory HoNOSCA total score change admission to discharge](#) and selecting the variables displayed below. How does your service compare?

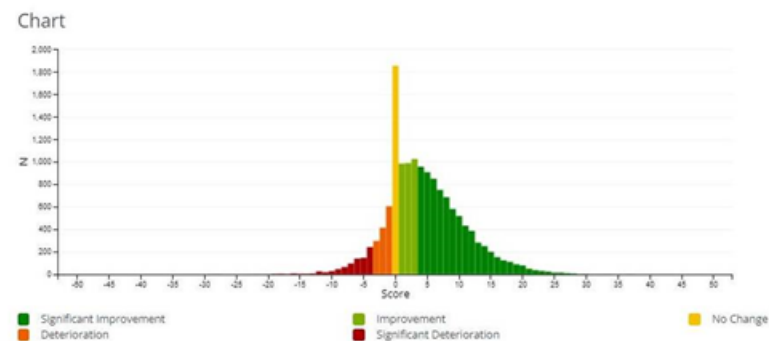
Jurisdiction: National
 Age Group: Child and Adolescent
 Measure: HoNOSCA
 View: Total Score
 Level of Analysis: Episode Transition
 Transition: Admission/Discharge
 Service Setting: Ambulatory
 Financial Year: 2019-2020, 2020-2021, 2021-2022

Summary

| N | Mean | Std Dev |
|-------|------|---------|
| 14697 | 4.6 | 6.2 |

Percentiles

| 10 | 25 | 50 | 75 | 90 |
|------|-----|-----|-----|------|
| -2.0 | 0.0 | 4.0 | 8.0 | 13.0 |



All data reported from 1st of July, 2019 to 30th of June, 2022.

You have control and can run any query you like and get any view of the NOCC that you want. Why not answer your questions today by exploring the reporting of the NOCC?