



A joint Australian,
State and Territory
Government Initiative

National Mental Health Benchmarking Project

An Australian Government funded initiative

COMPARATIVE INDICATORS

3-year time series 2004-05 to 2006-07

Forensic Mental Health Services Forum

Version 1.0 Summary for Public Release

Australian Mental Health Outcomes and Classification Network
November 2008

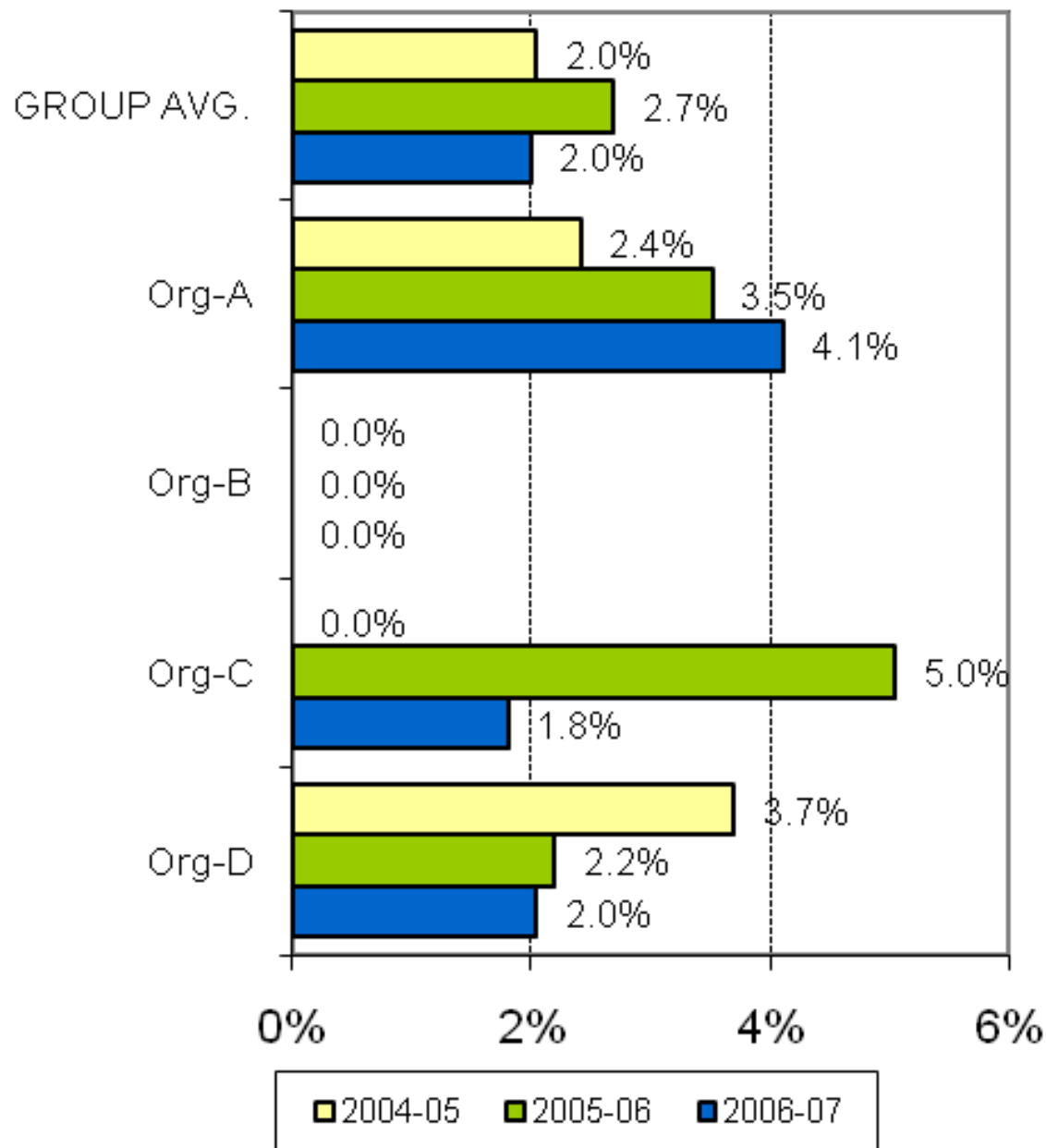


AMHOCN

"Sharing Information to
Improve Outcomes"

This document was prepared from a more detailed version developed for restricted use by organisations participating in the National Mental Health Benchmarking Project. By agreement of all organisations, this version of the indicators has been prepared for wider use and unrestricted distribution. All identifying details and source data tables have been removed from this version.

KPI#1 28-day readmission rate



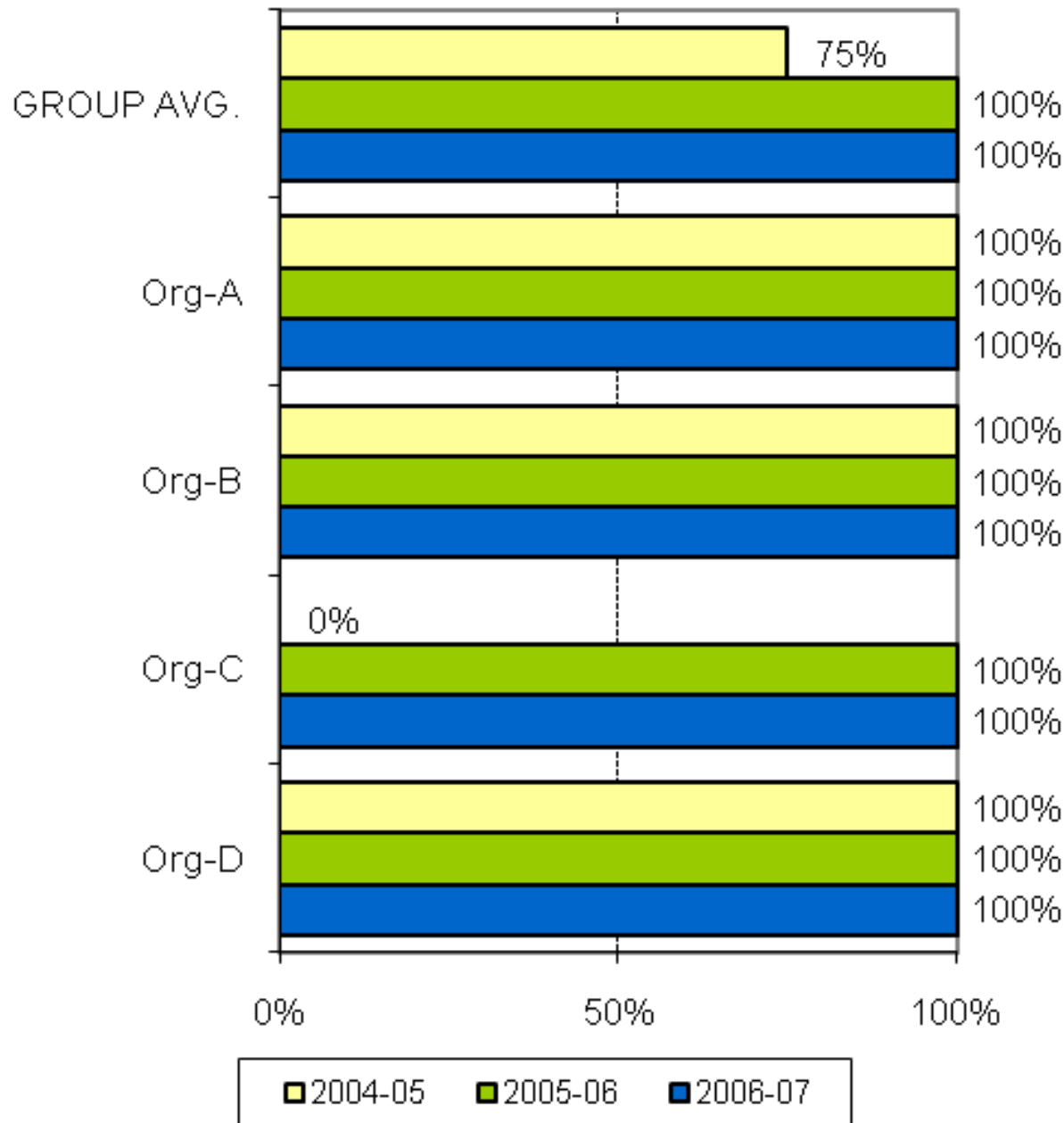
A joint Australian, State and Territory Government Initiative



AMHOCN

"Sharing Information to Improve Outcomes"

KPI#2 National Standards compliance (Level 1 only)



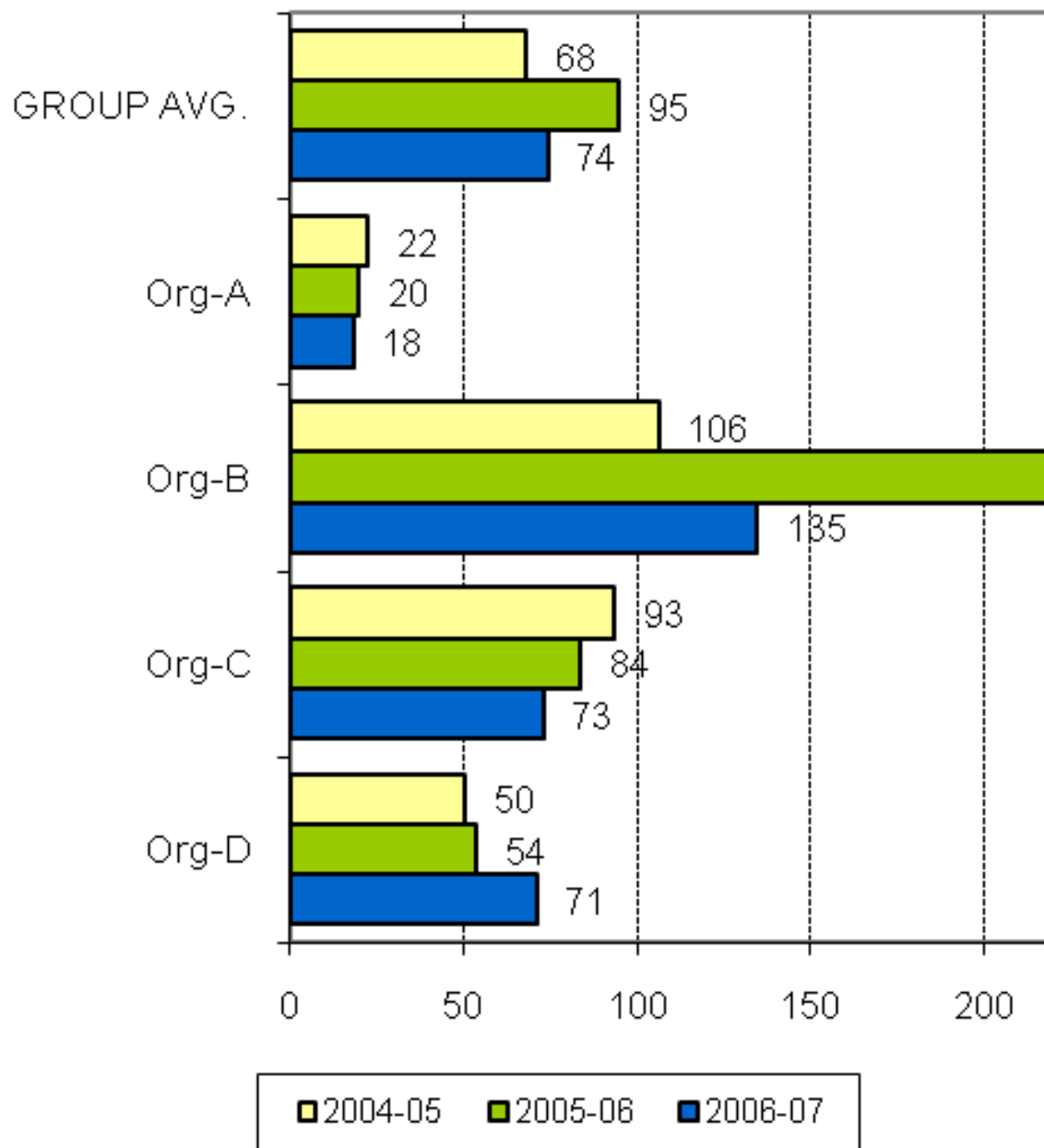
A joint Australian,
State and Territory
Government Initiative



AMHOCN

"Sharing Information to
Improve Outcomes"

KPI#3 Average acute length of stay



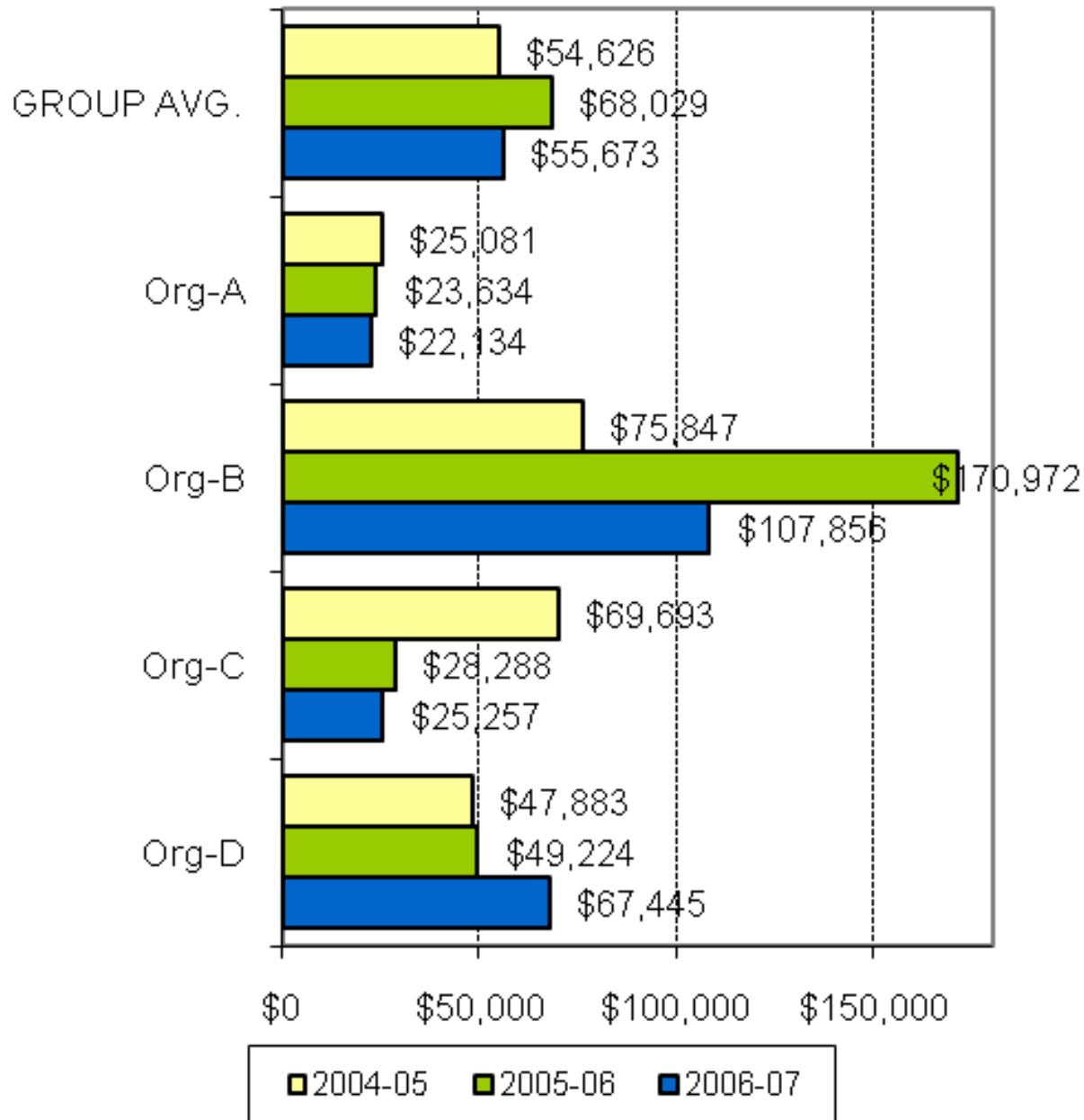
A joint Australian,
State and Territory
Government Initiative



AMHOCN

"Sharing Information to
Improve Outcomes"

KPI#4 Cost per acute inpatient episode



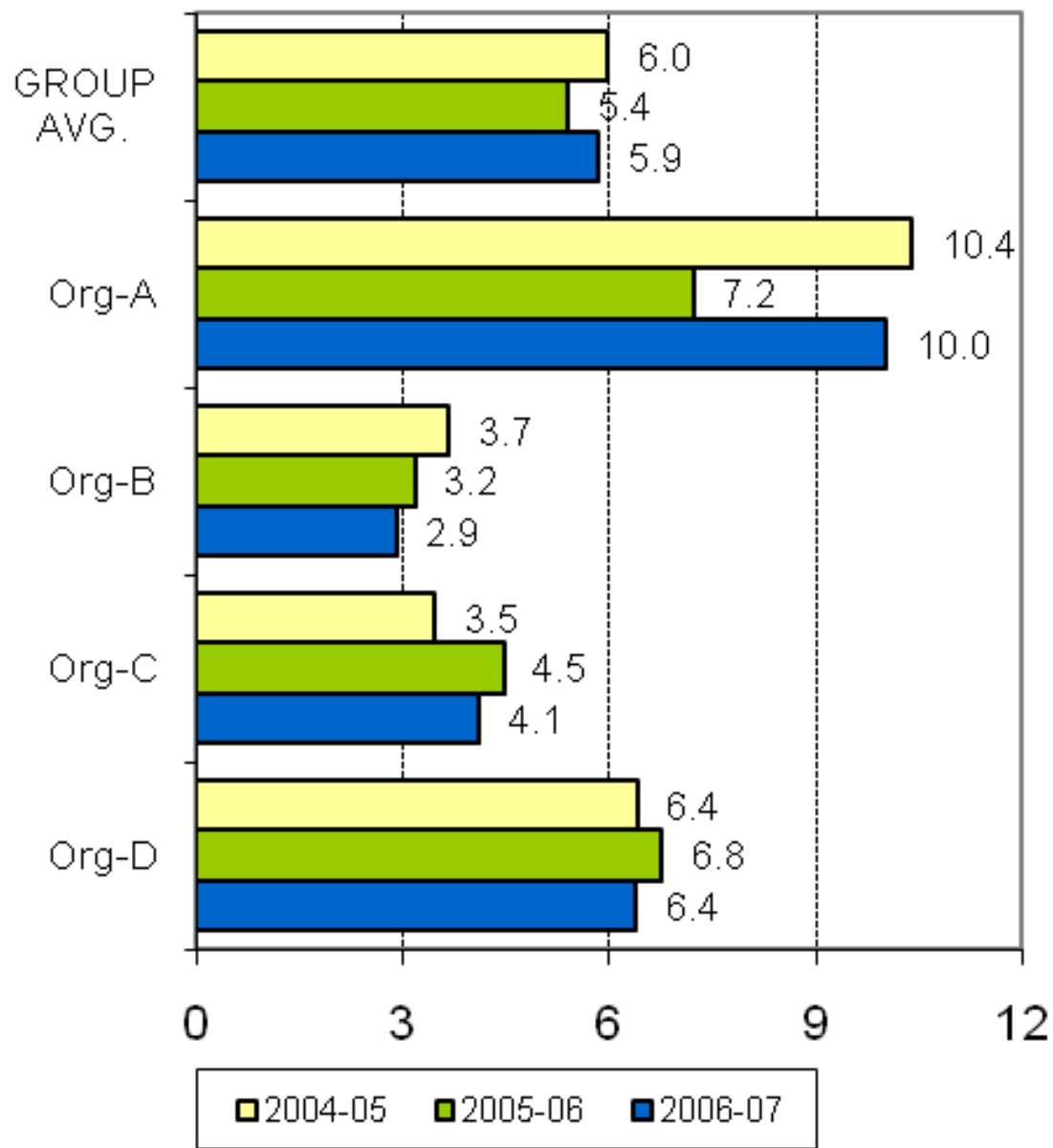
A joint Australian, State and Territory Government Initiative



AMHOCN

"Sharing Information to Improve Outcomes"

KPI#5 Average treatment days per 3 month period of community care



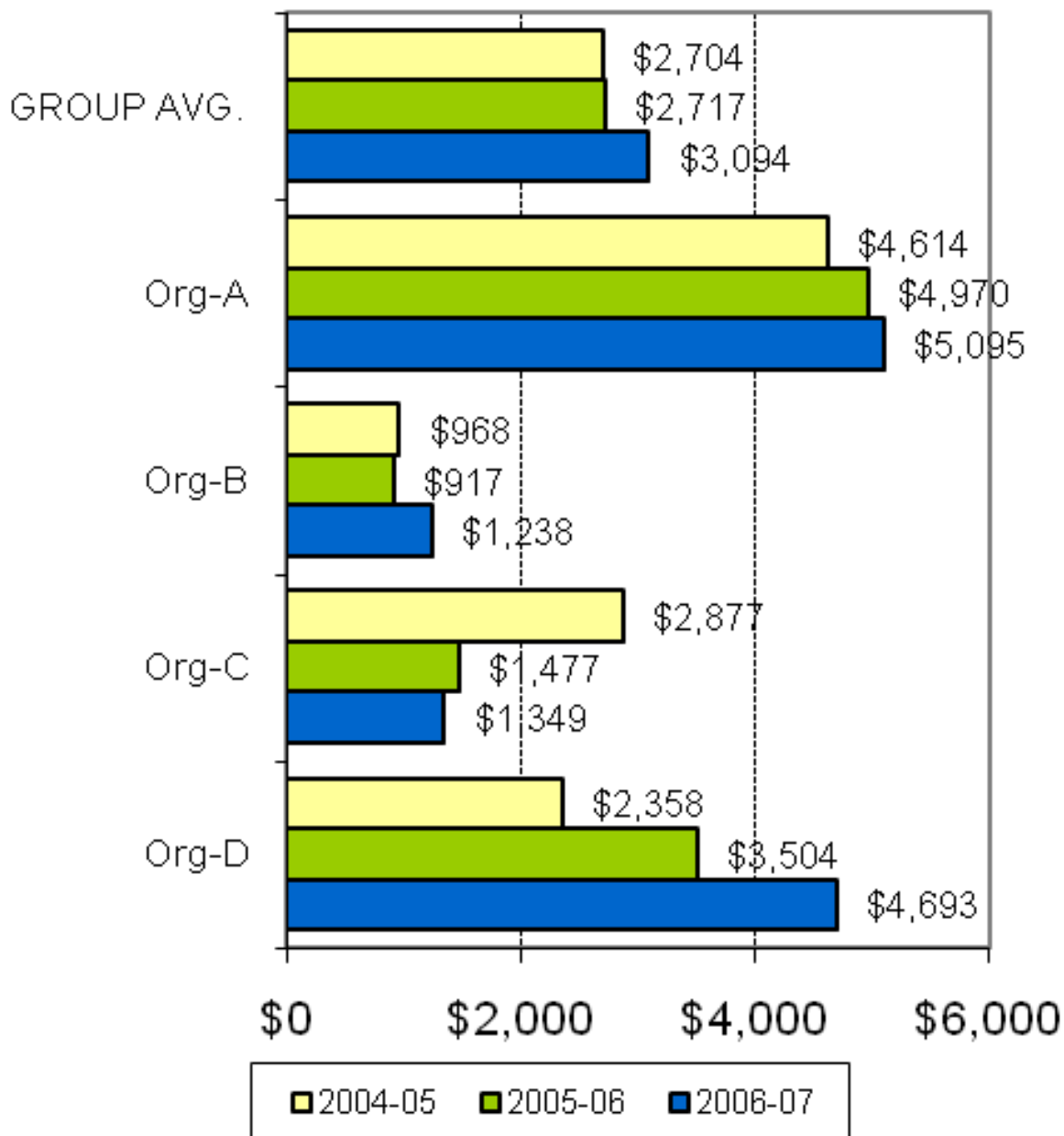
A joint Australian,
State and Territory
Government Initiative



AMHOCN

"Sharing Information to
Improve Outcomes"

KPI#6 Average cost per 3 month period of community care



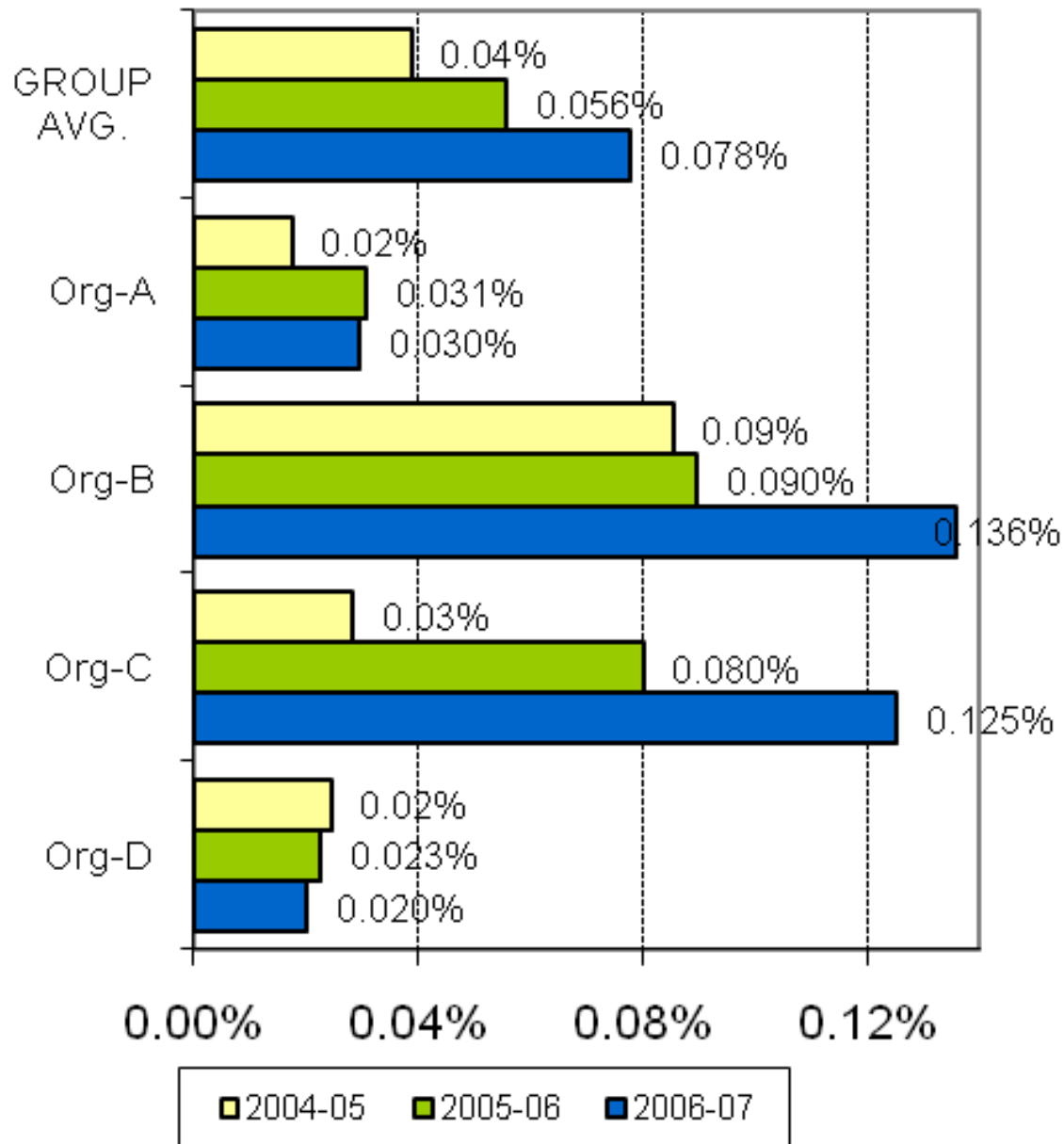
A joint Australian, State and Territory Government Initiative



AMHOCN

"Sharing Information to Improve Outcomes"

KPI#7a % target population receiving ambulatory services



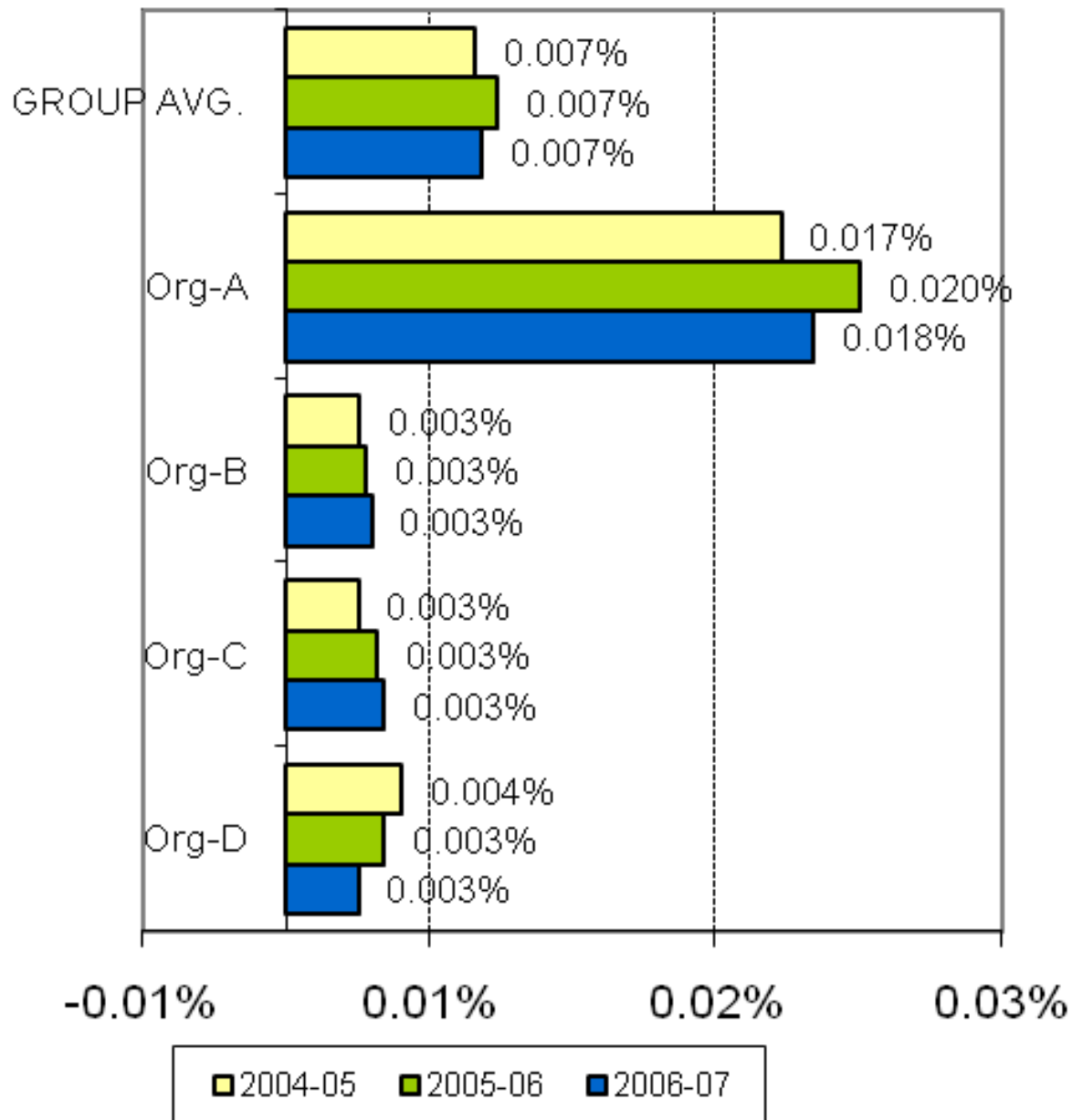
A joint Australian, State and Territory Government Initiative



AMHOCN

"Sharing Information to Improve Outcomes"

KPI#7b % target population receiving inpatient services



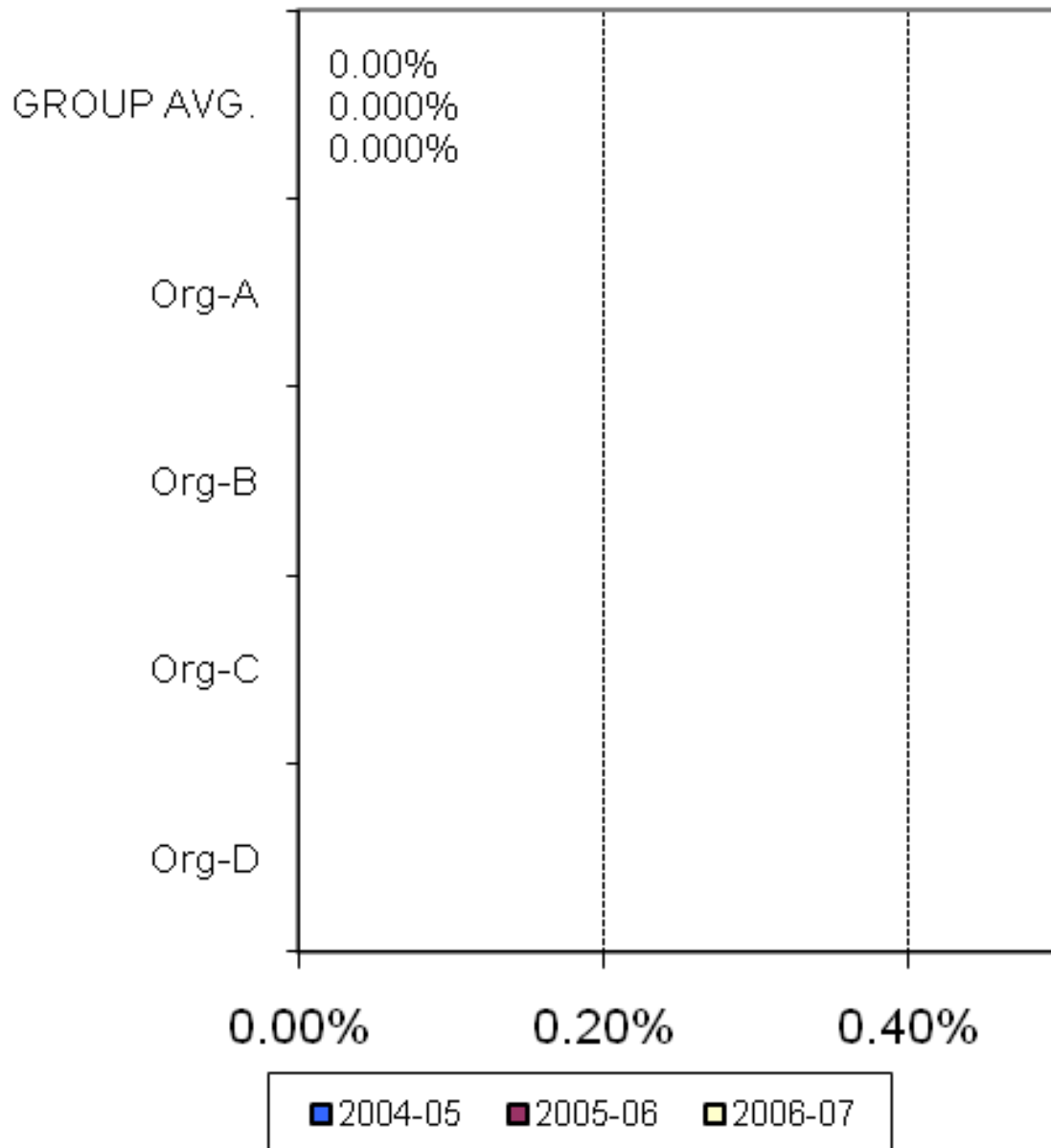
A joint Australian,
State and Territory
Government Initiative



AMHOCN

"Sharing Information to
Improve Outcomes"

KPI#7c % target population receiving residential services



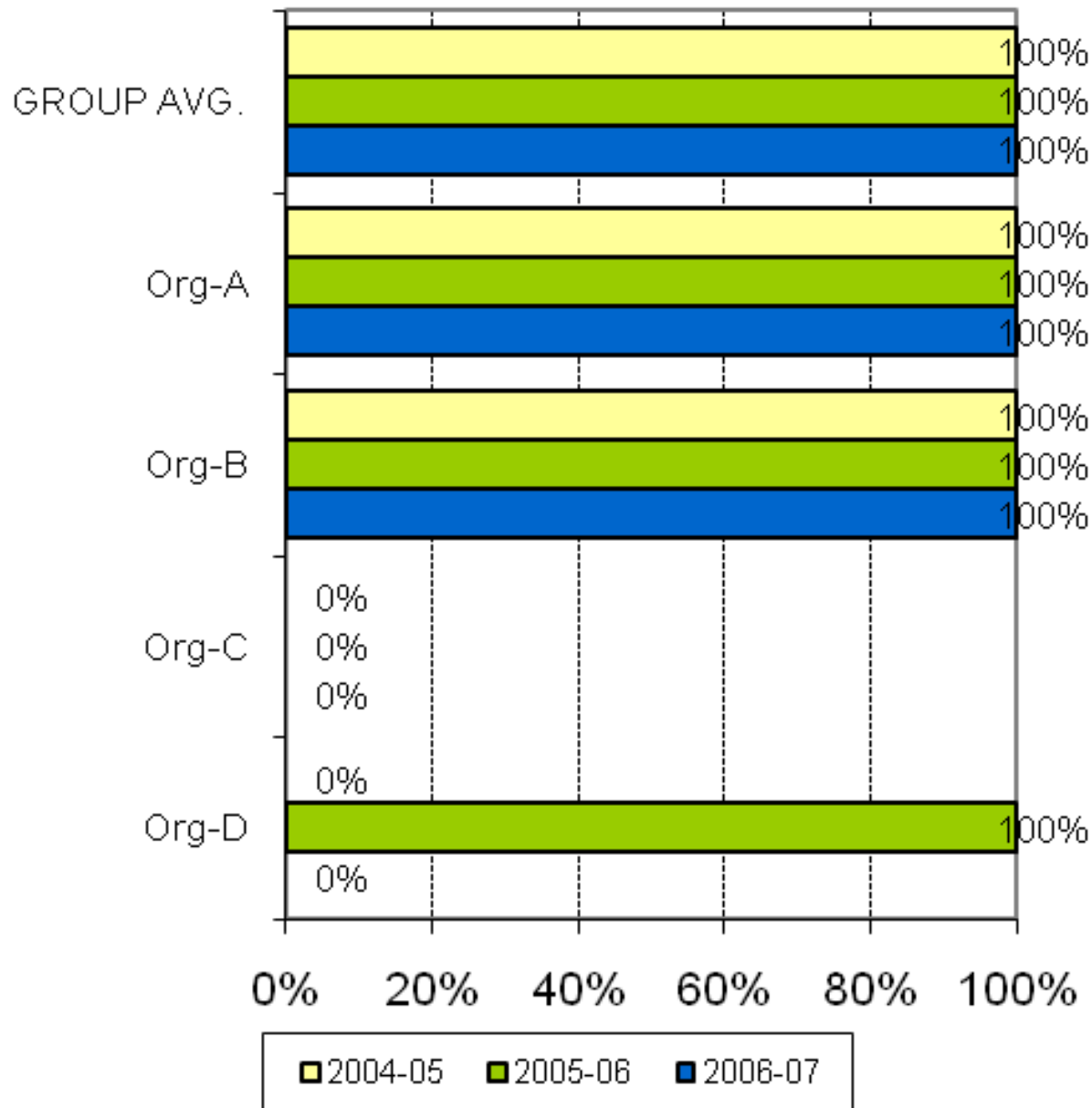
A joint Australian,
State and Territory
Government Initiative



AMHOCN

"Sharing Information to
Improve Outcomes"

KPI#8 Local access to inpatient care



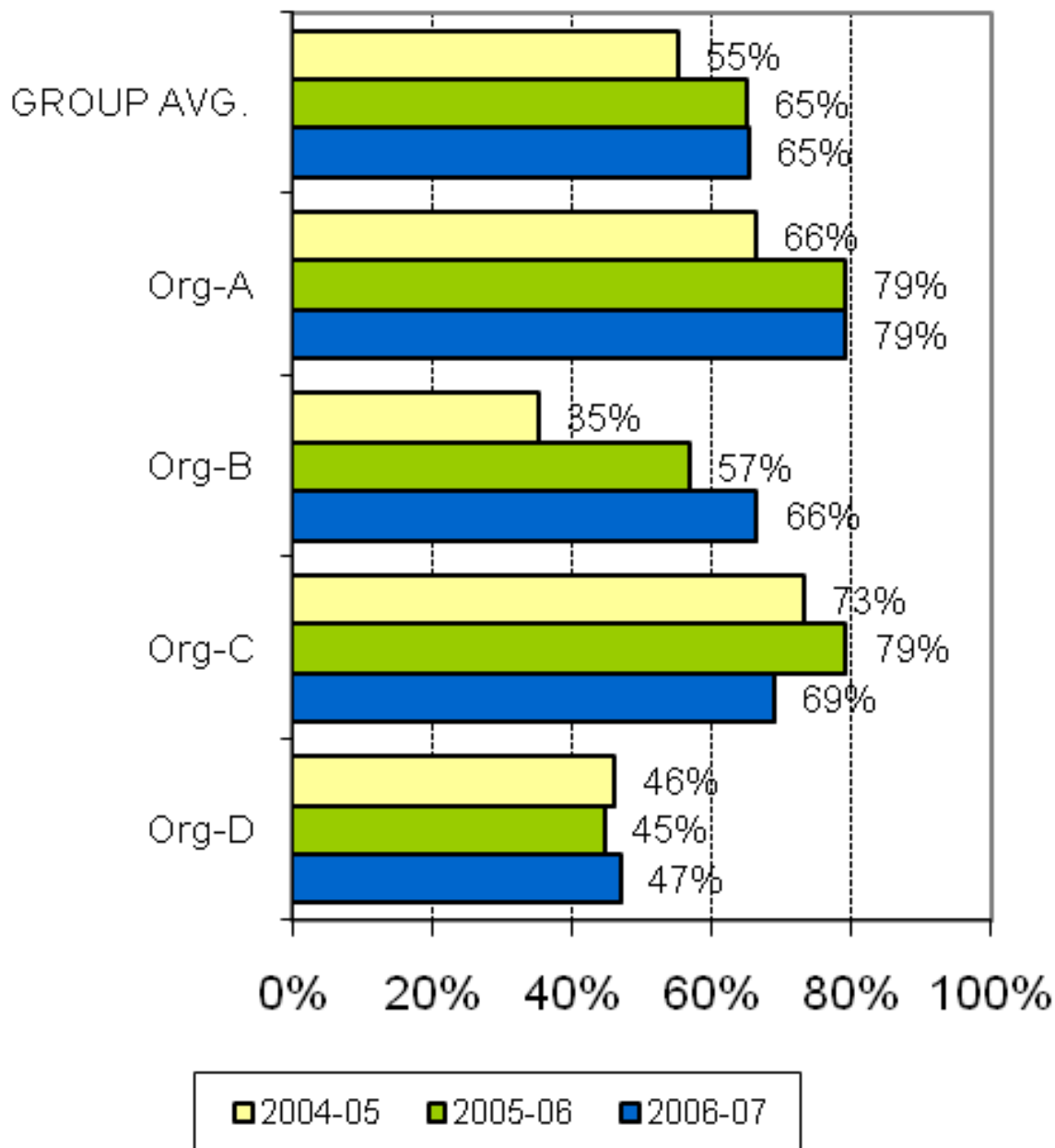
A joint Australian, State and Territory Government Initiative



AMHOCN

"Sharing Information to Improve Outcomes"

KPI#9 New client index



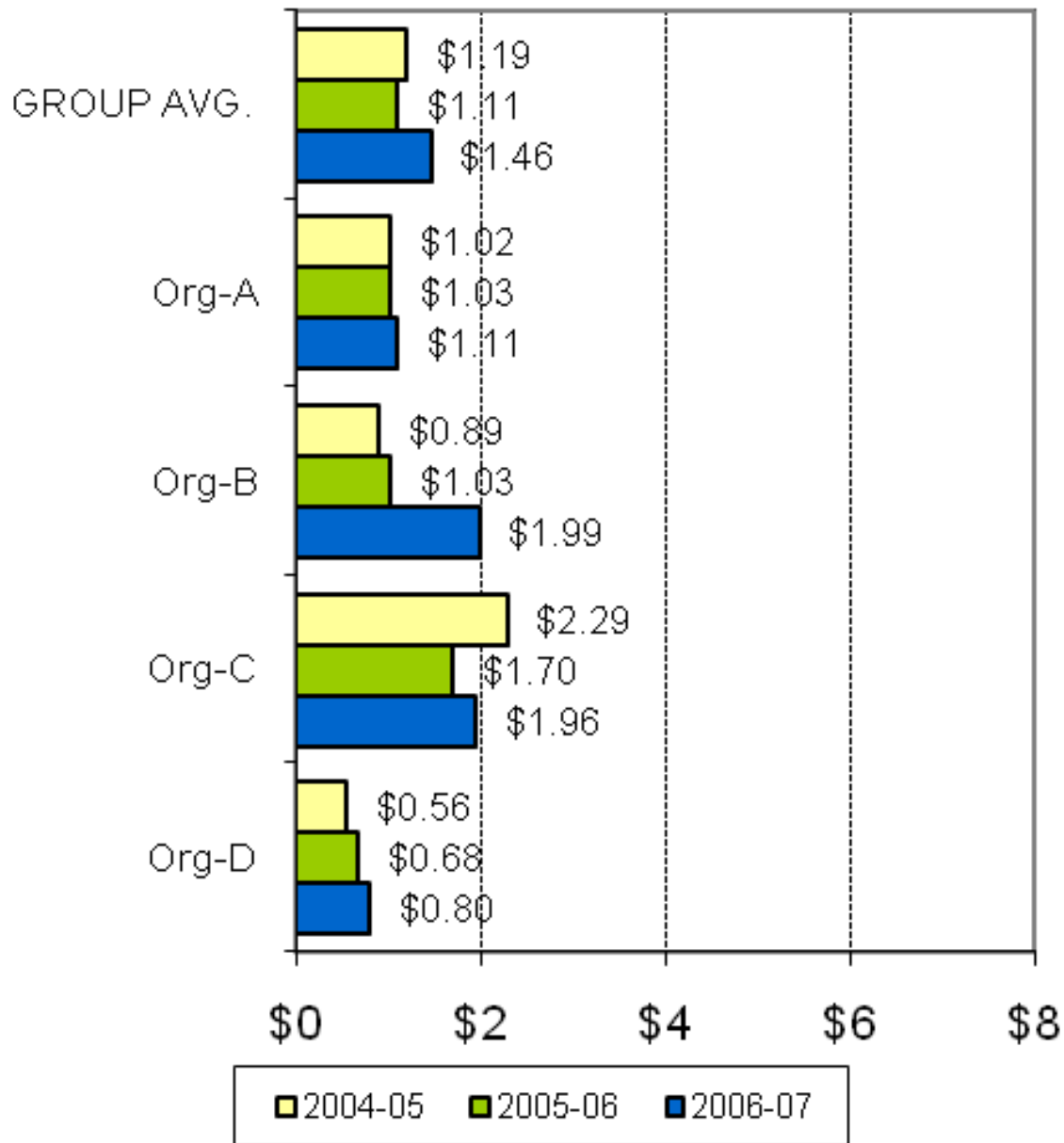
A joint Australian,
State and Territory
Government Initiative



AMHOCN

"Sharing Information to
Improve Outcomes"

KPI#10a Area per capita resources - Ambulatory services (Expenditure)



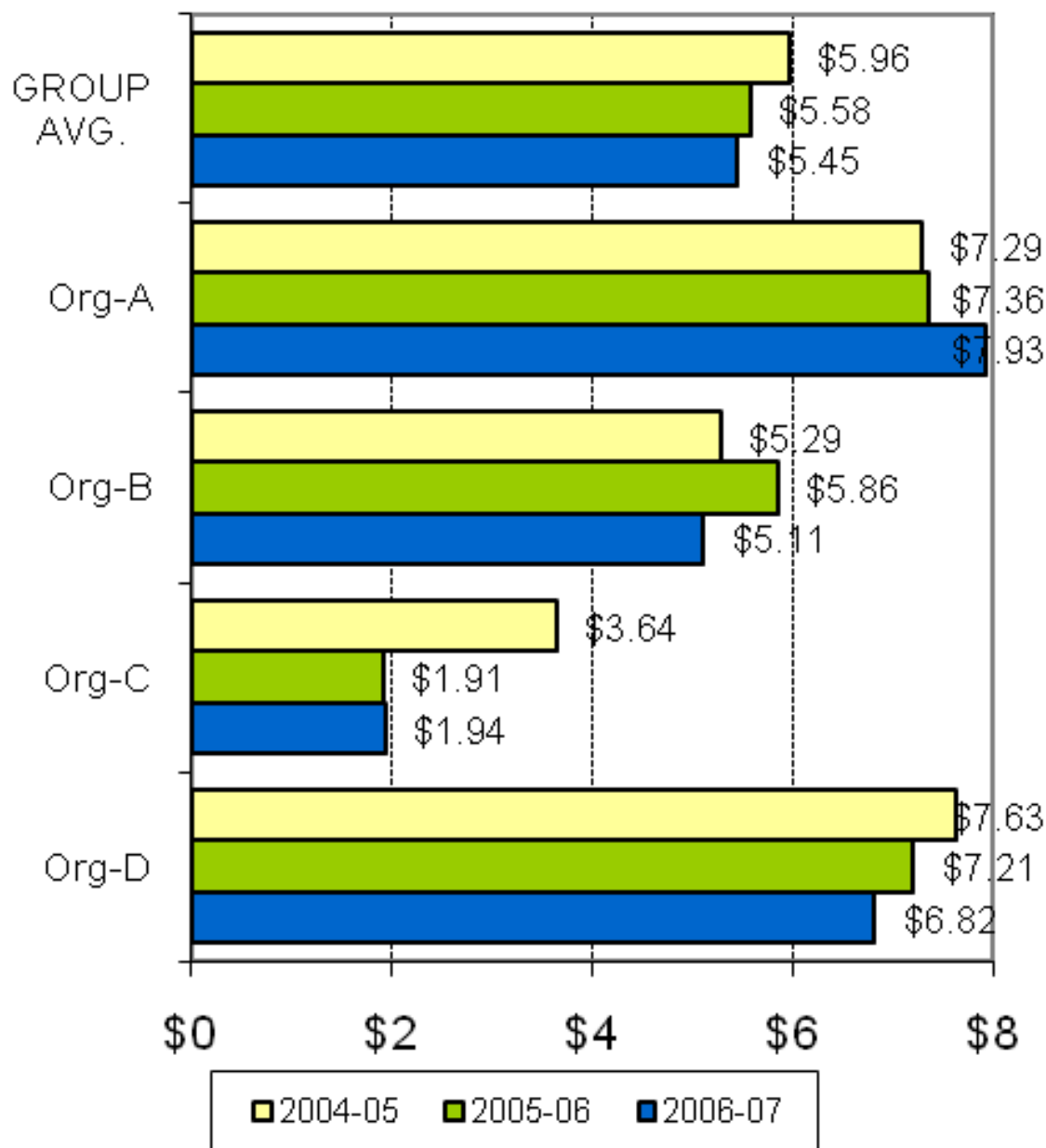
A joint Australian,
State and Territory
Government Initiative



AMHOCN

"Sharing Information to
Improve Outcomes"

KPI#10b Area per capita resources - Inpatient services (Expenditure)



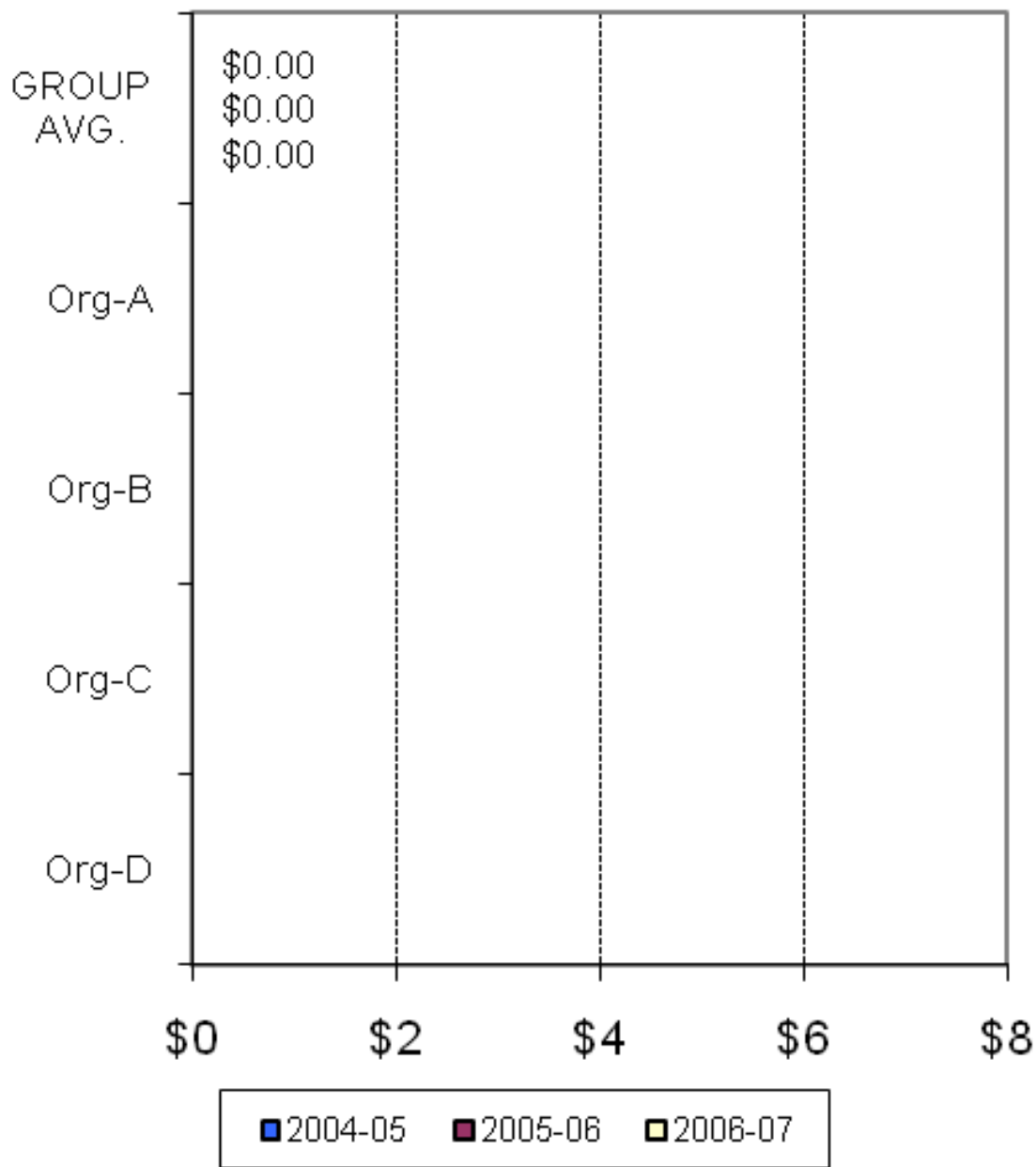
A joint Australian, State and Territory Government Initiative



AMHOCN

"Sharing Information to Improve Outcomes"

KPI#10c Area per capita resources - Residential services (Expenditure)



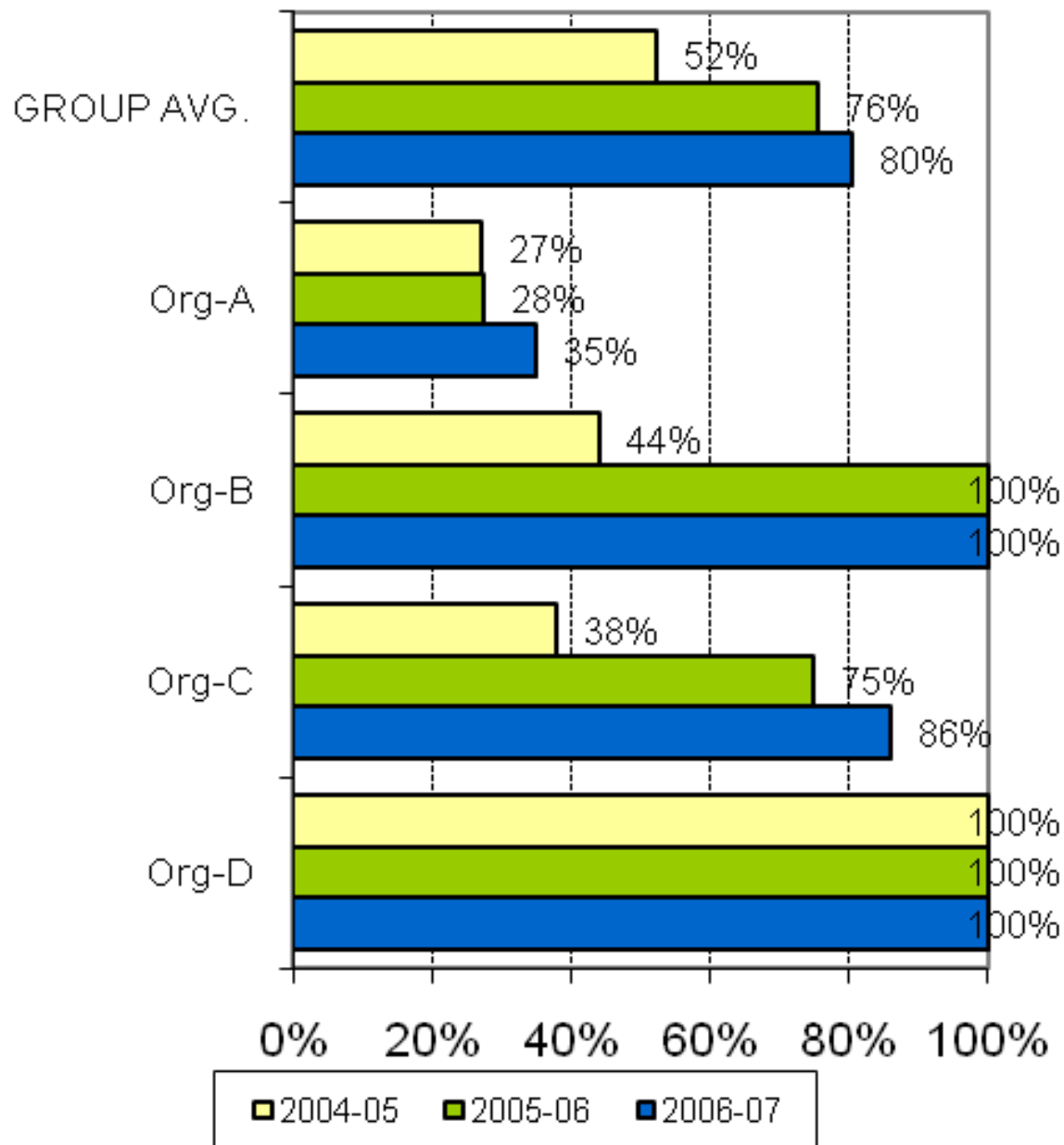
A joint Australian, State and Territory Government Initiative



AMHOCN

"Sharing Information to Improve Outcomes"

KPI#11 Pre admission community care



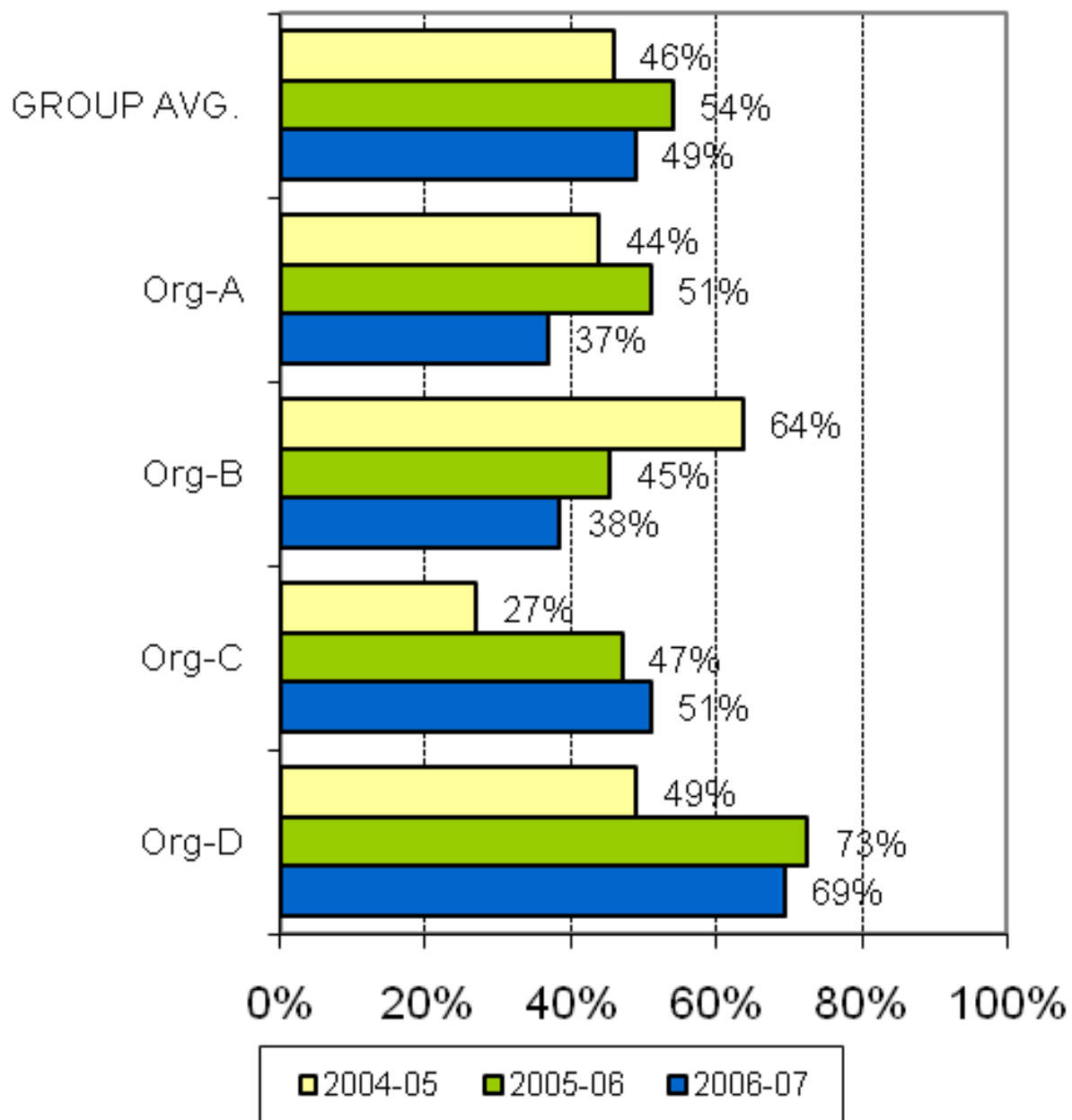
A joint Australian, State and Territory Government Initiative



AMHOCN

"Sharing Information to Improve Outcomes"

KPI#12 Post discharge community care



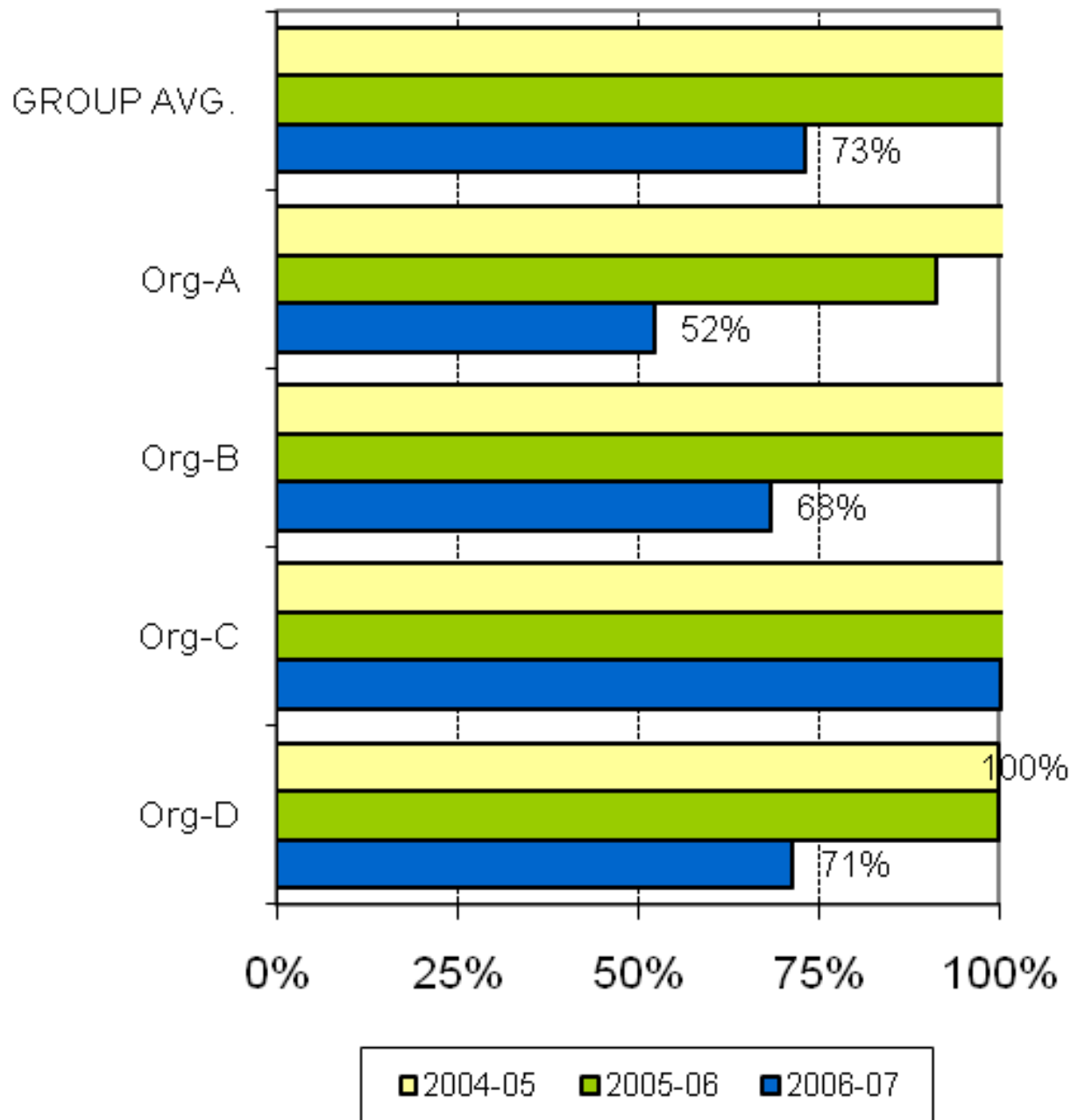
A joint Australian, State and Territory Government Initiative



AMHOCN

"Sharing Information to Improve Outcomes"

KPI#13 Outcomes readiness - Inpatient



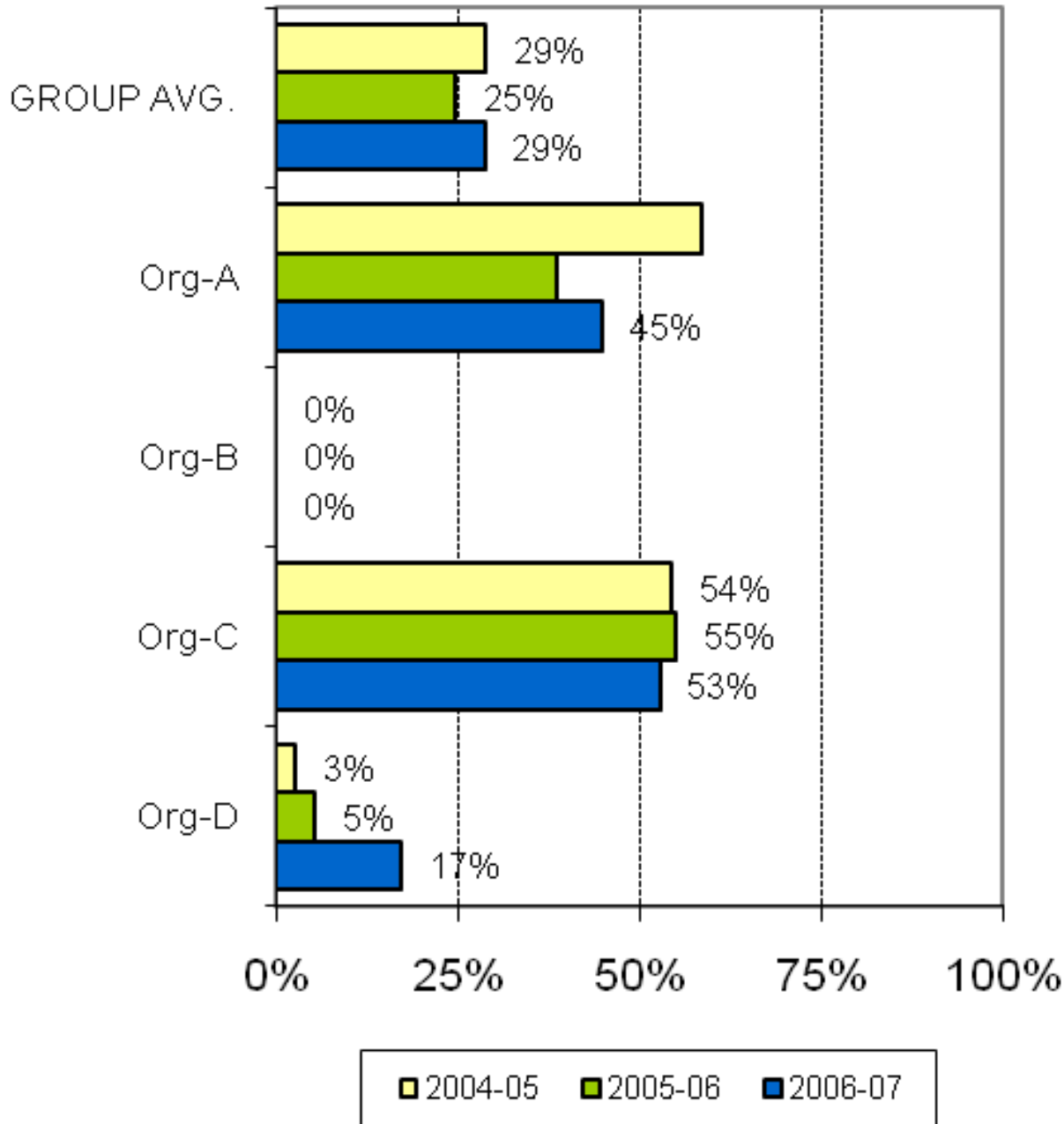
A joint Australian, State and Territory Government Initiative



AMHOCN

"Sharing Information to Improve Outcomes"

KPI#13 Outcomes readiness - Ambulatory



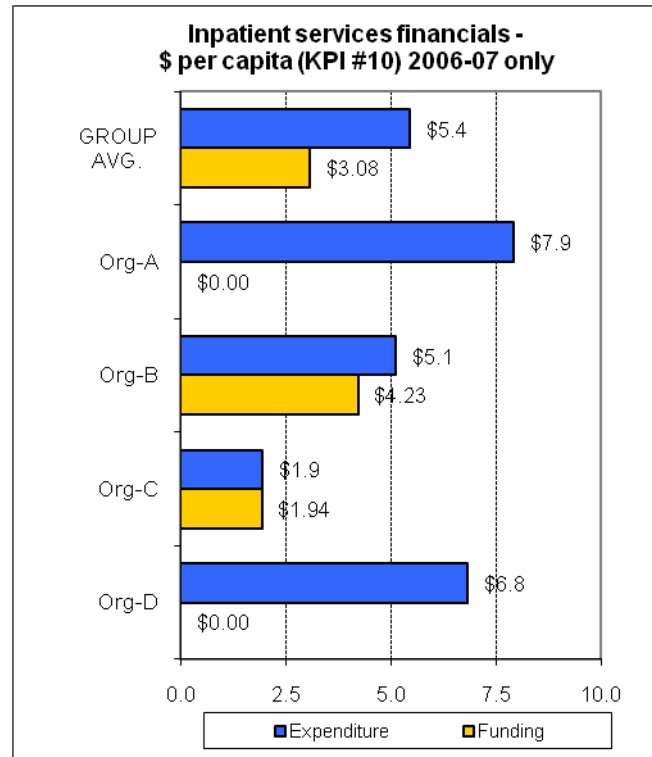
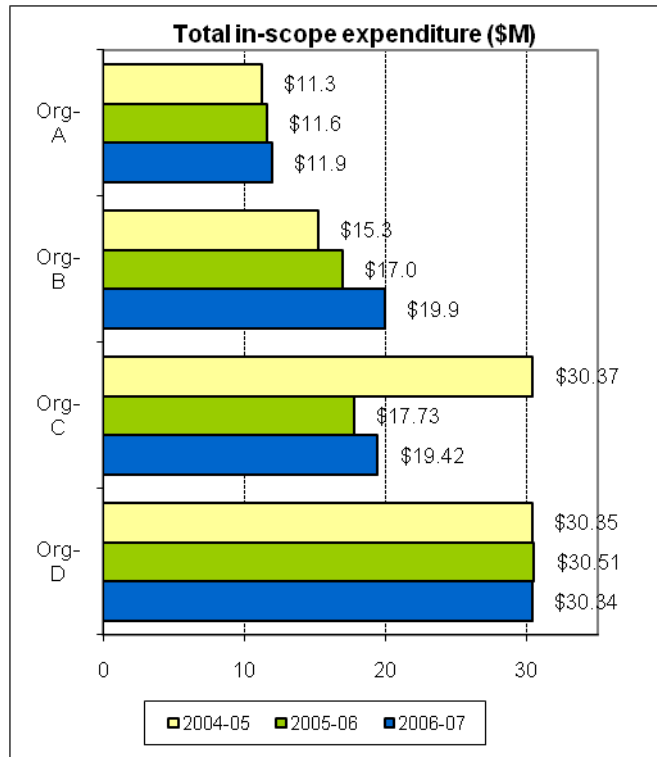
A joint Australian, State and Territory Government Initiative

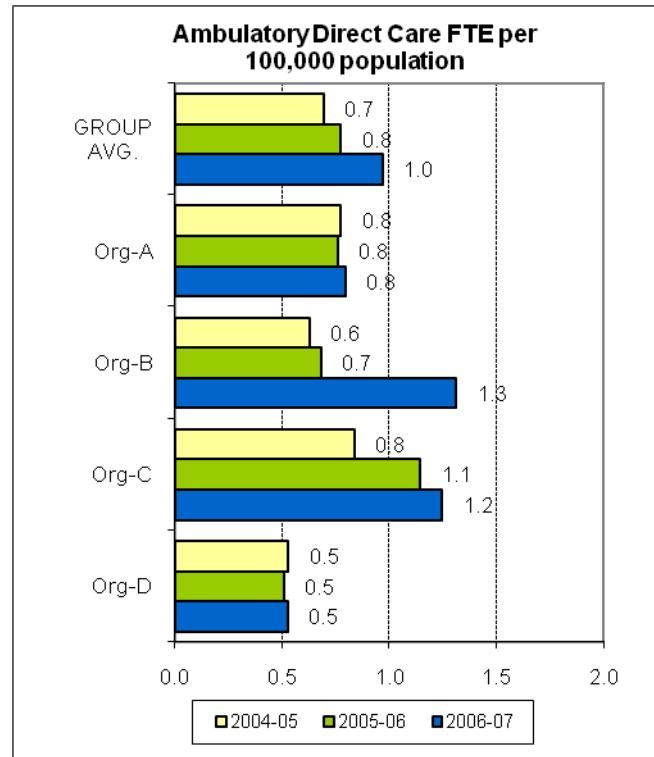
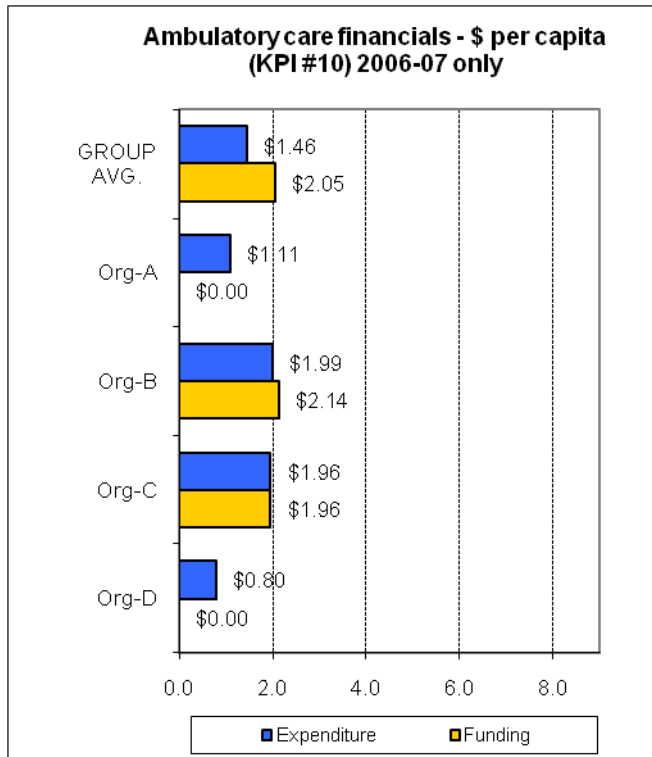


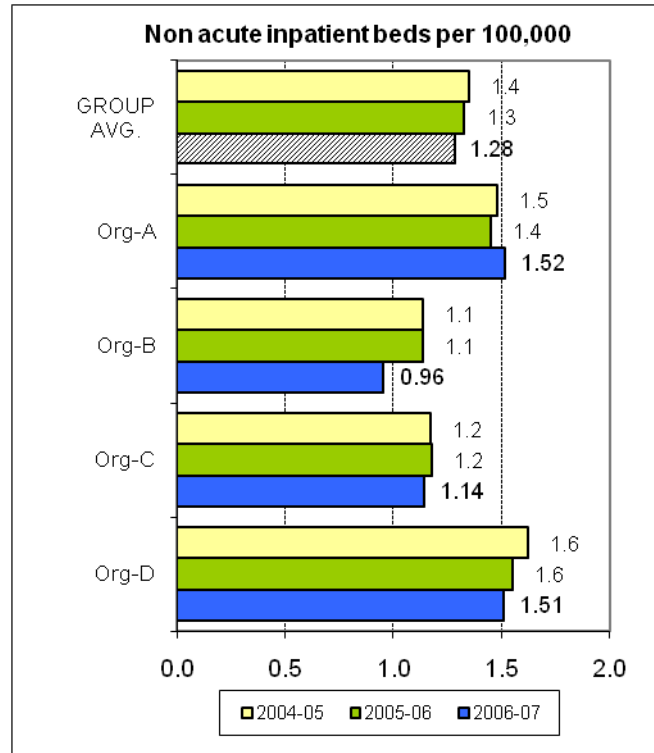
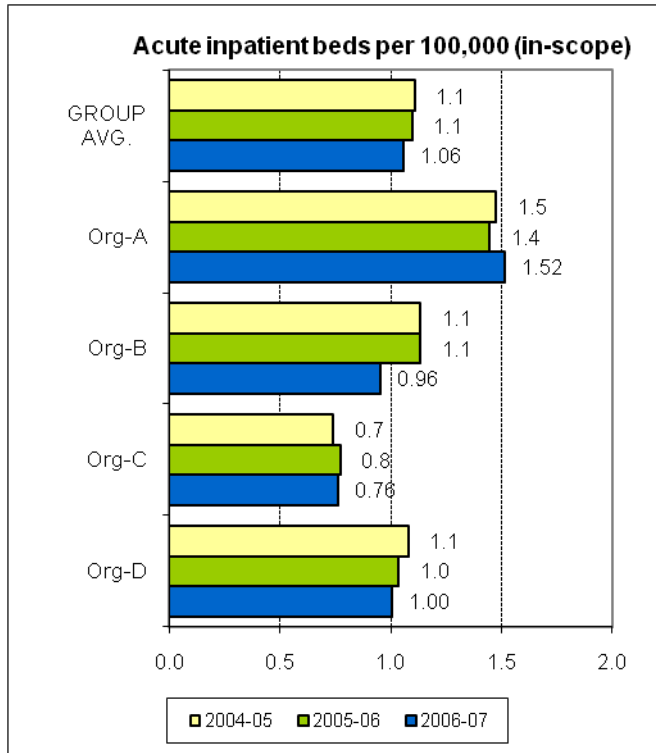
AMHOCN

"Sharing Information to Improve Outcomes"

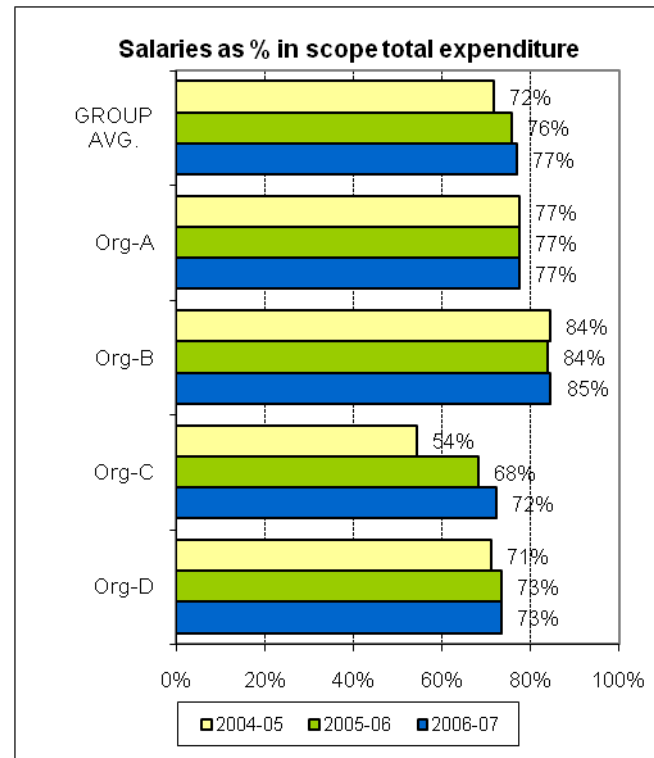
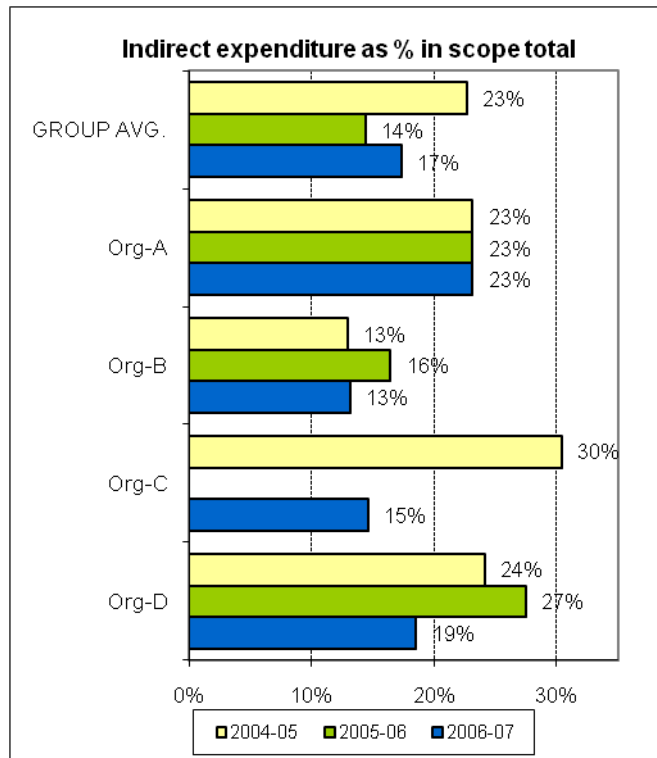
THEME 1: COMPARATIVE RESOURCES AVAILABLE TO THE ORGANISATION



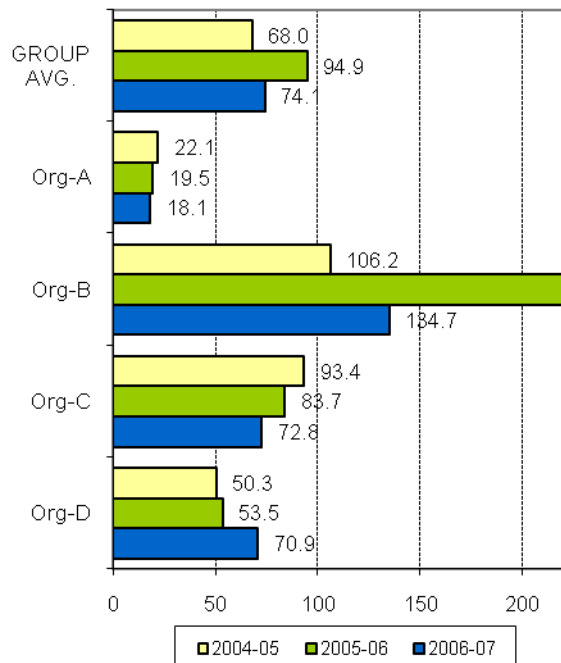




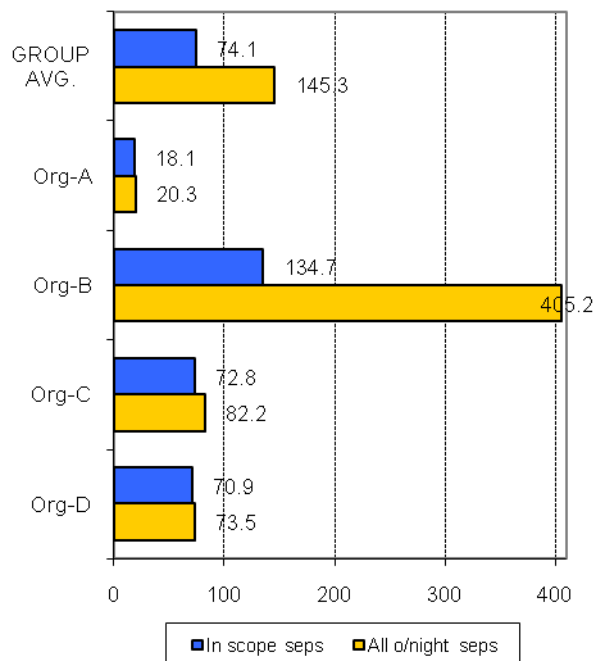
THEME 2: EFFICIENCY IN USE OF RESOURCES



KPI#3 Average acute length of stay



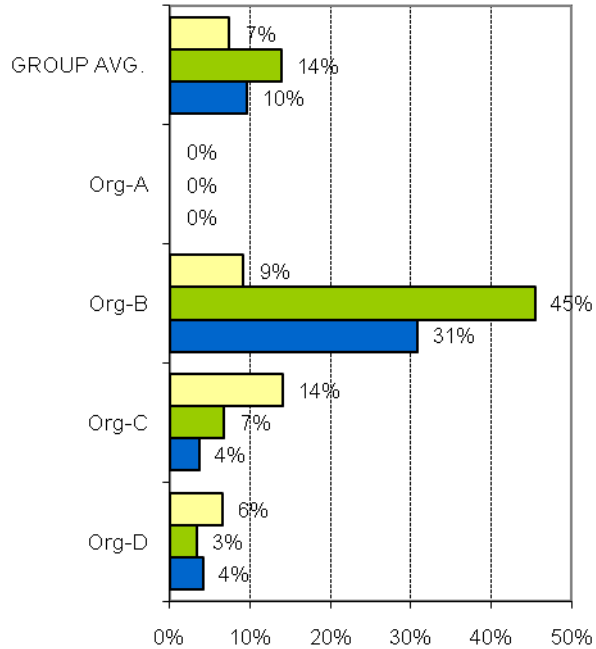
Acute inpatient length of stay - in scope vs all seps, 2006-07 only



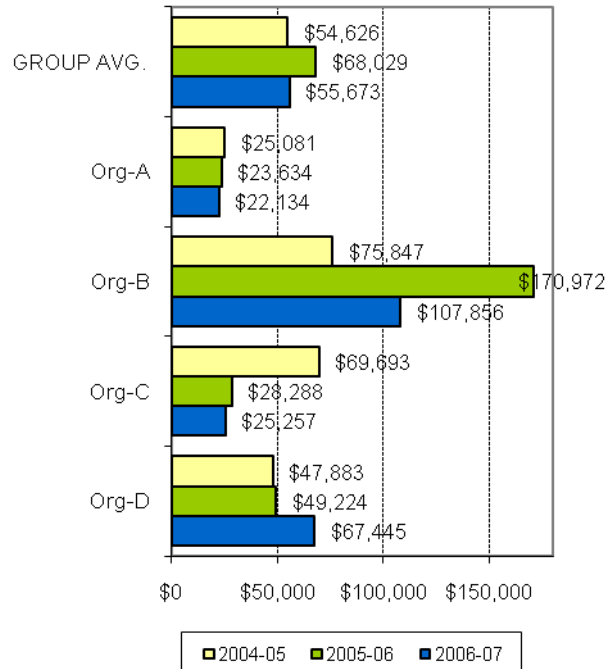
AMHOCN

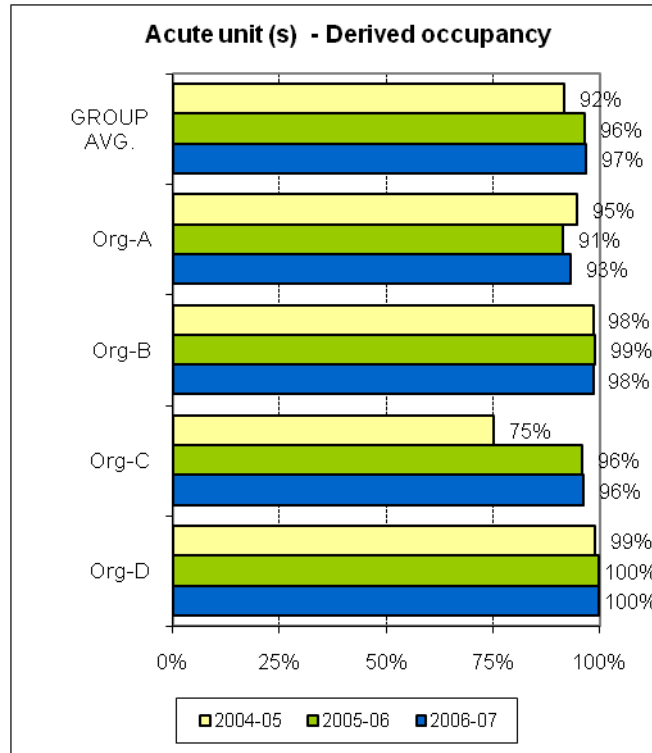
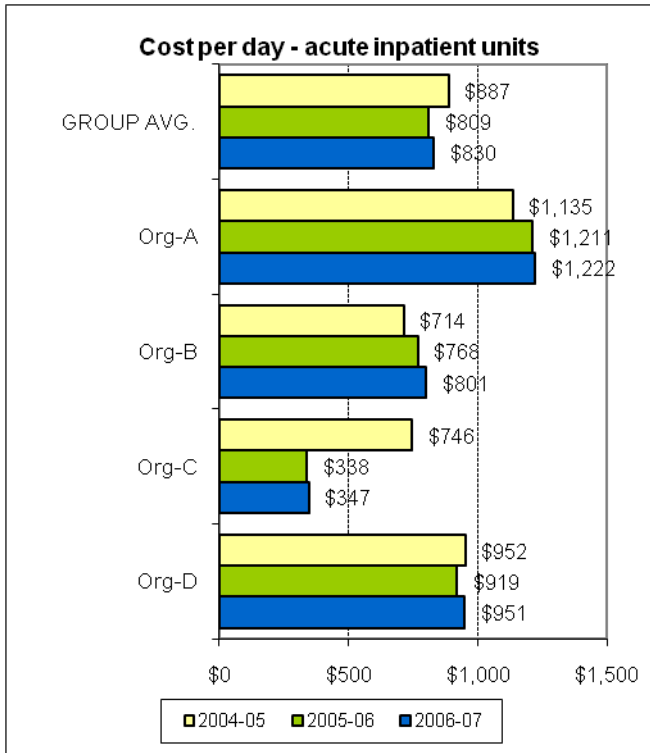
"Sharing Information to
Improve Outcomes"

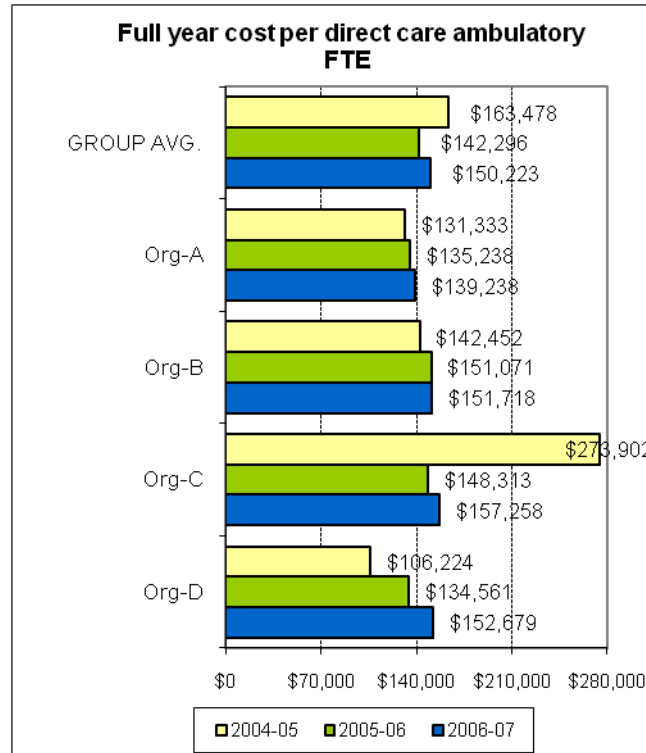
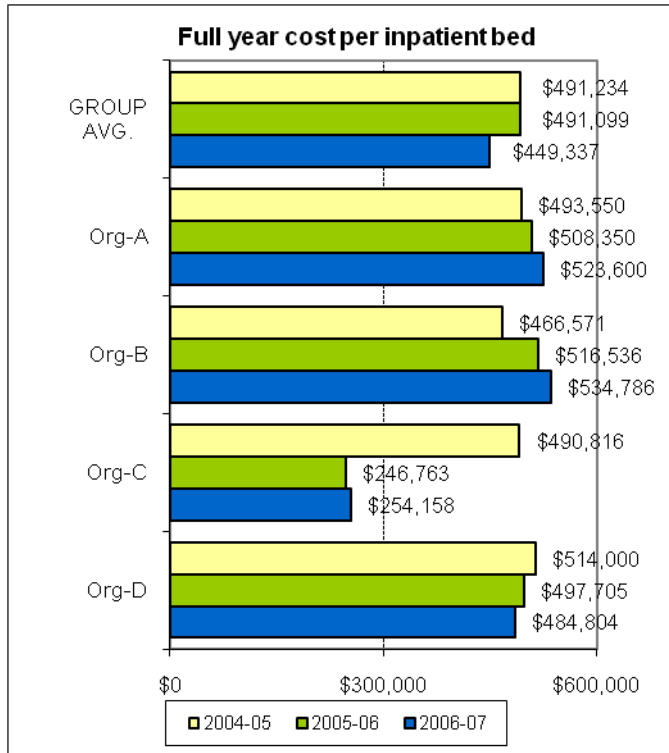
Acute inpatient LOS outliers (>180 days)



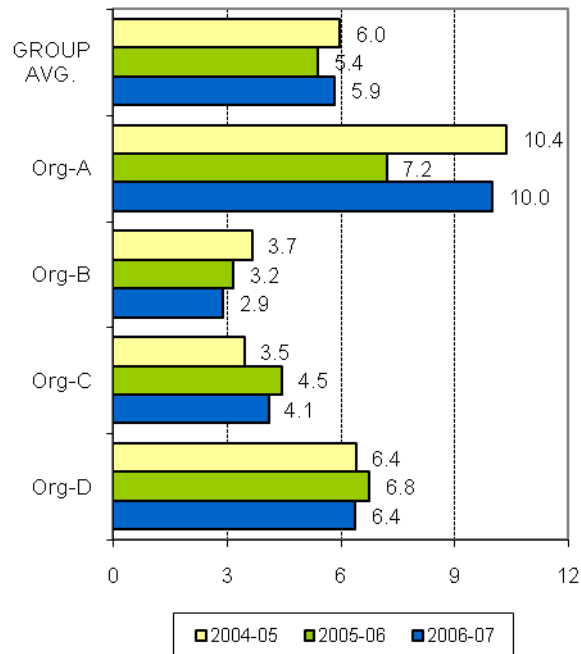
KPI #4 Cost per acute inpatient episode



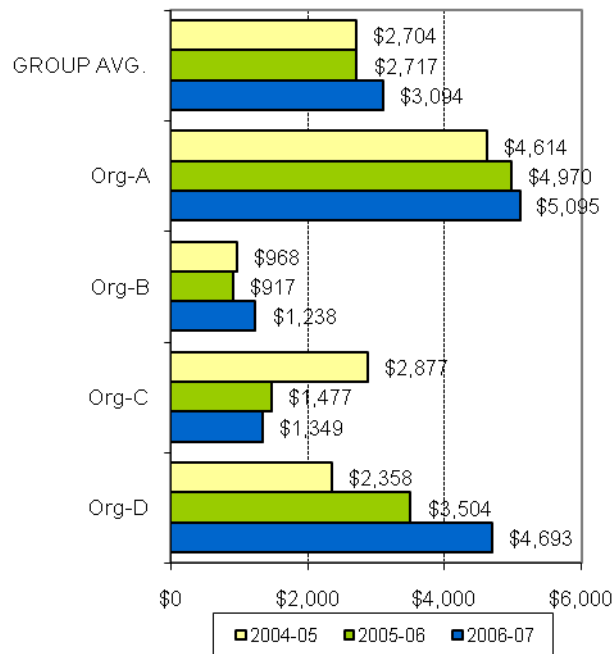




KPI#5 Average treatment days per 3 month period of community care

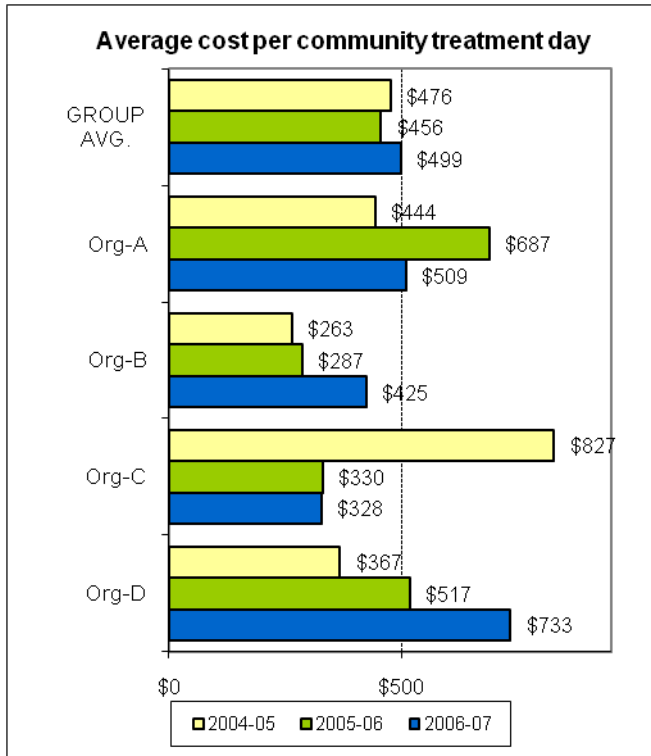


KPI#6 Average cost per 3 month period of community care

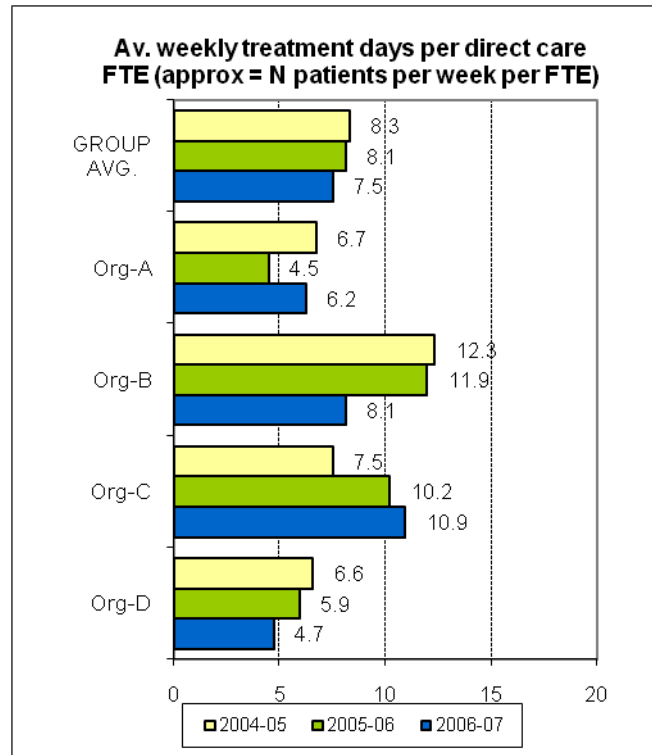
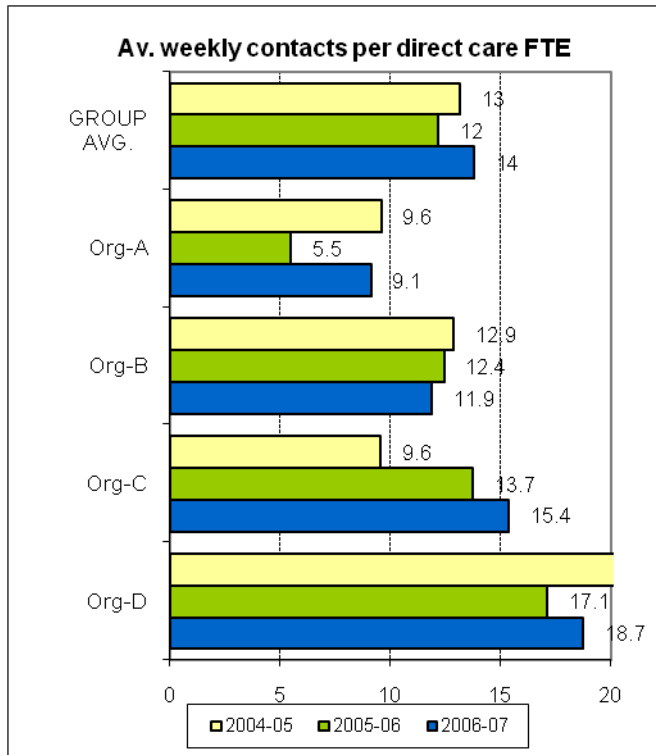


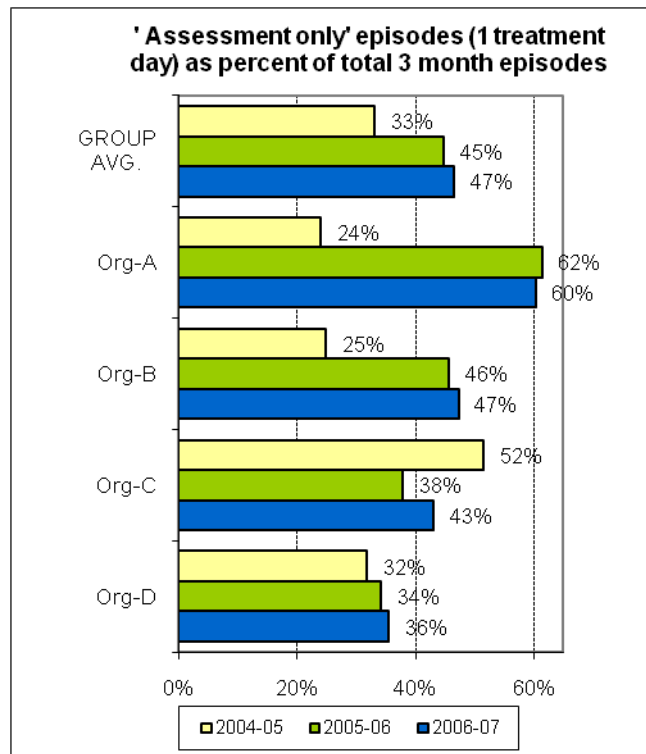
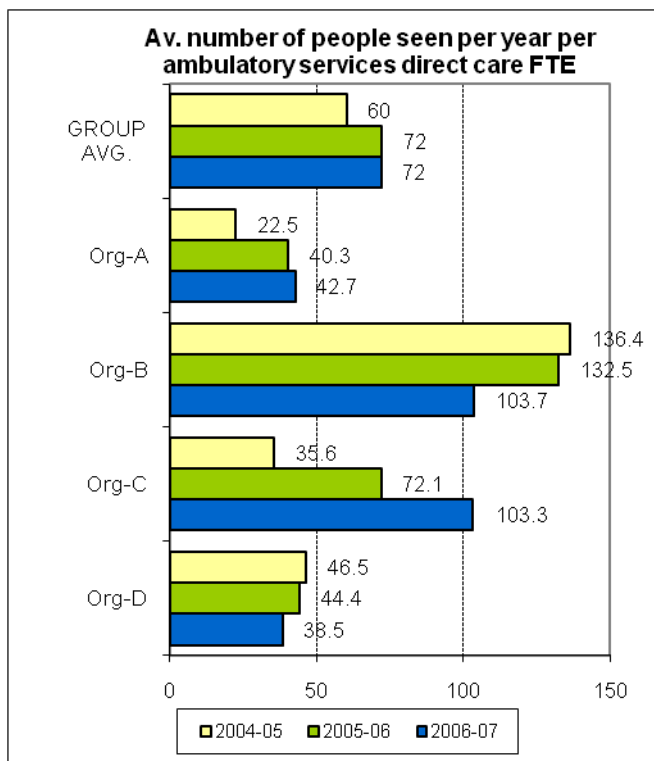
AMHOCN

"Sharing Information to
Improve Outcomes"



THEME 3: PRODUCTIVITY AND ACTIVITY OF AMBULATORY SERVICES





Supplementary information reported for KPI #5:

% 'assessment only' episodes by ambulatory service type 2006-07 only

	Org-D	Org-C	Org-B	Org-A
Prison	n.a	0%	76%	n.a
Community	26%	30%	n.a	49%
Court Liaison	57%	56%	40%	80%
Consultation-Liaison	44%	n.a	48%	n.a

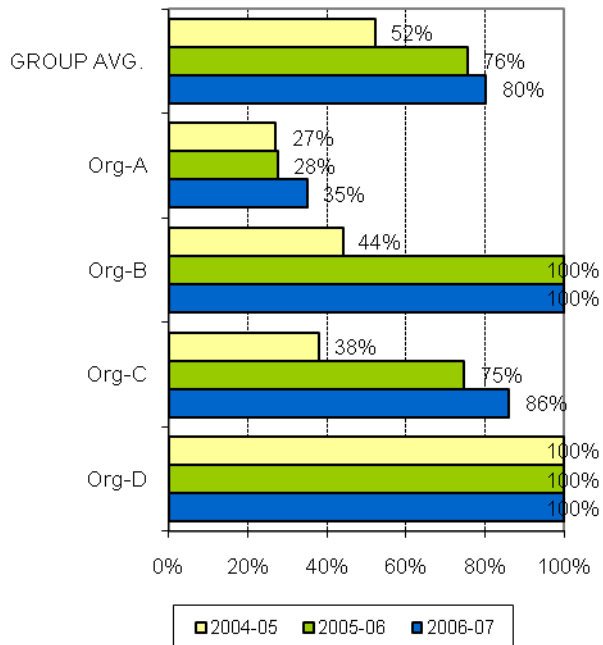


AMHOCN

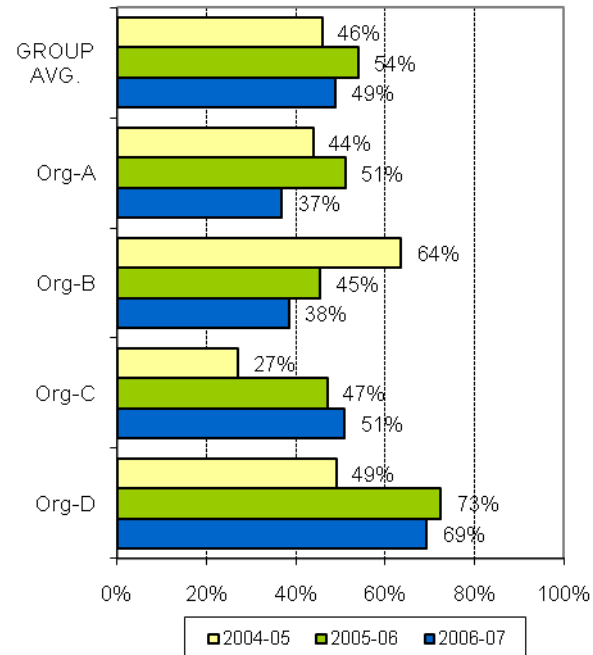
"Sharing Information to
Improve Outcomes"

THEME 4: CONTINUITY OF CARE

KPI#11 Pre admission community care



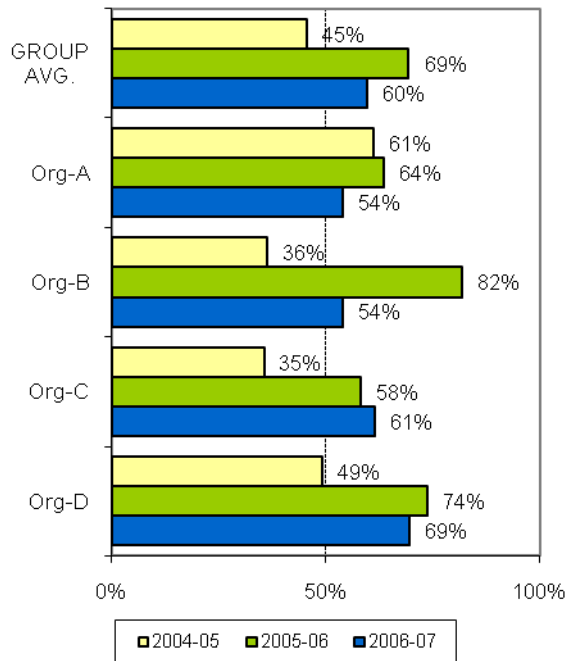
KPI#12 Post discharge community care - 7 days



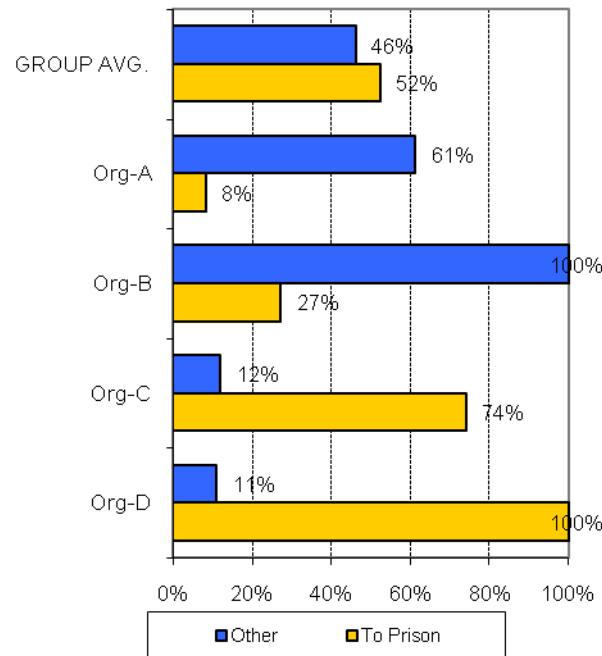
AMHOCN

"Sharing Information to
Improve Outcomes"

KPI#12 Post discharge community care - 28 days

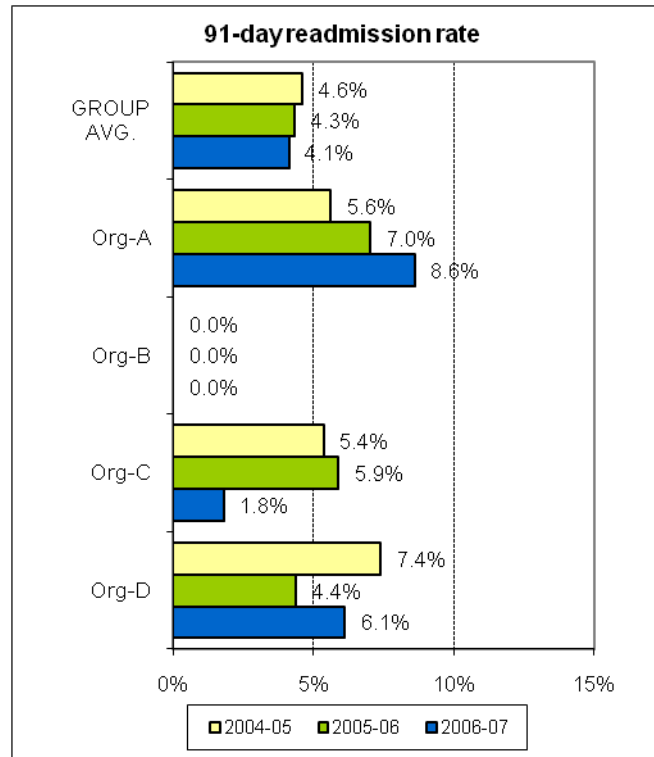
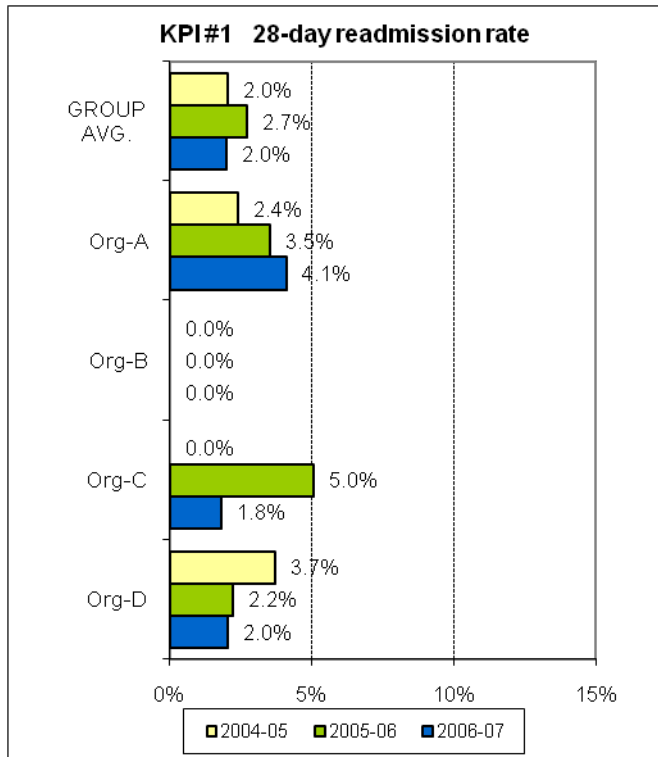


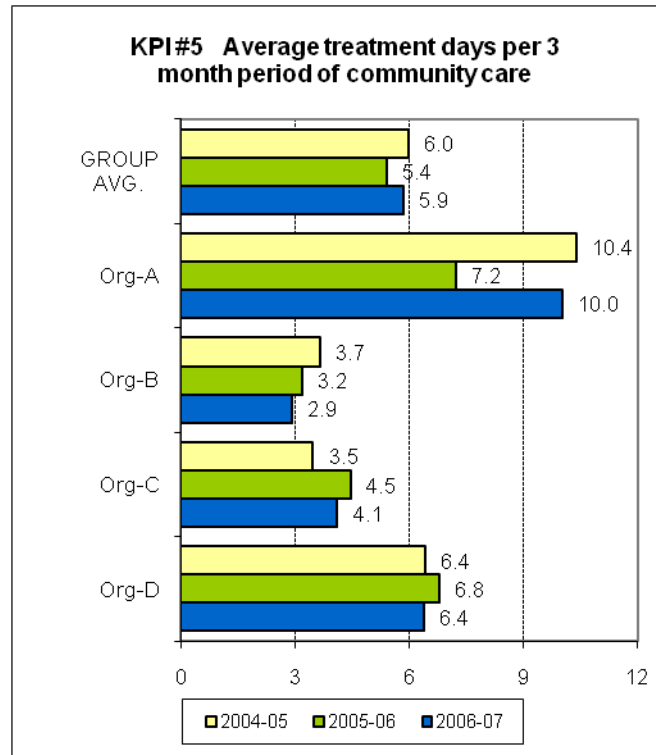
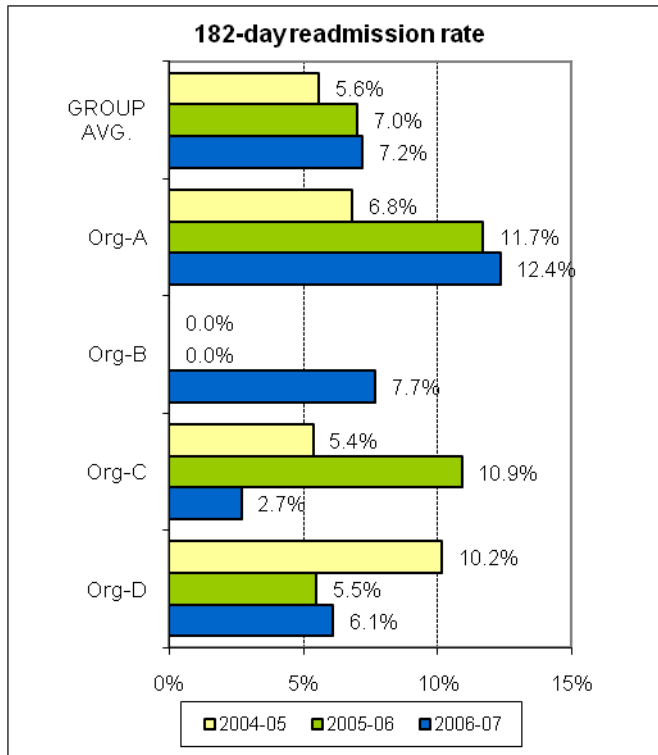
KPI#12 Post discharge community care 7 day follow up - by discharge destination



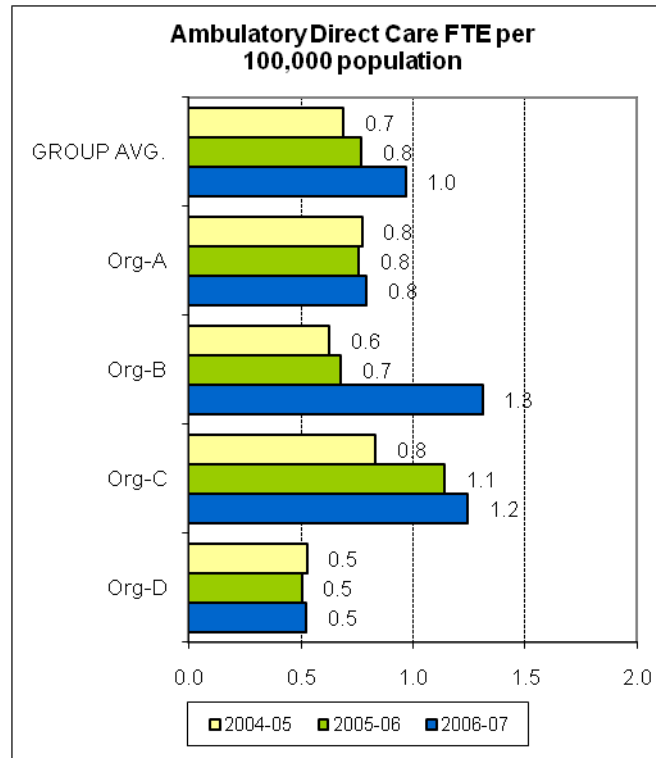
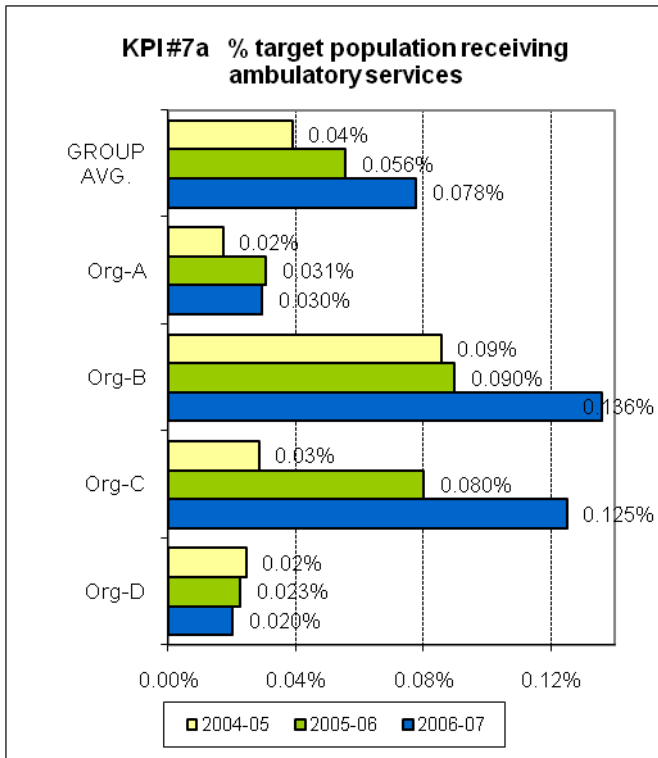
AMHOCN

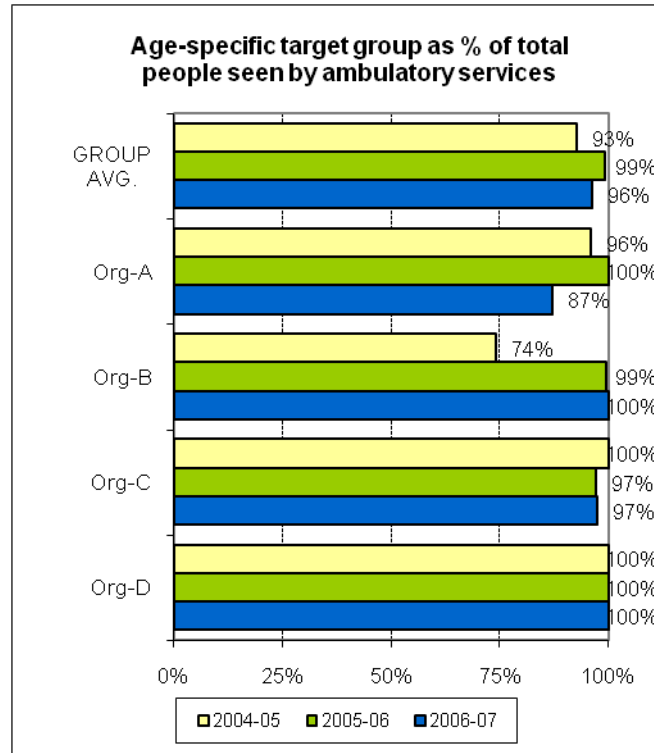
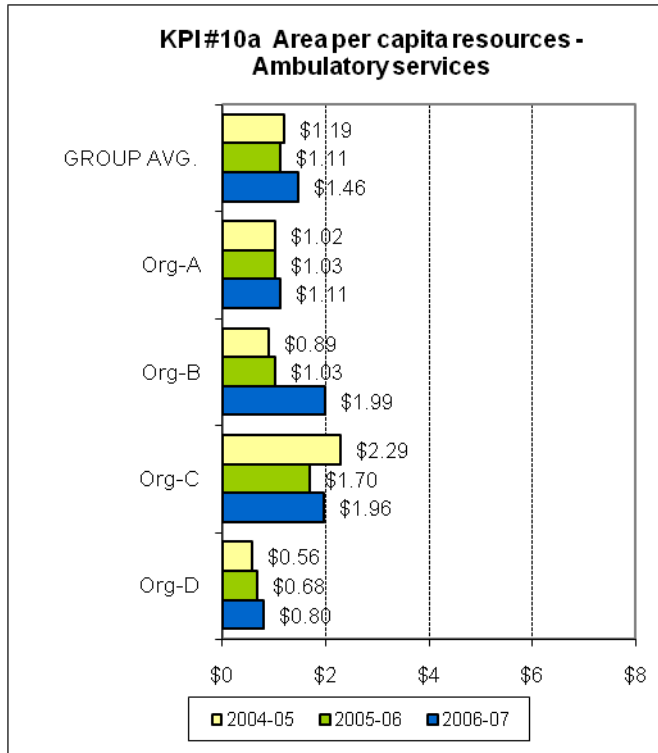
"Sharing Information to
Improve Outcomes"



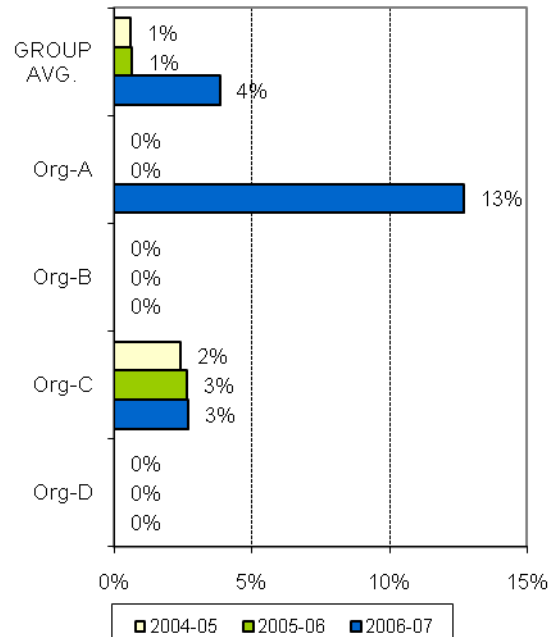


THEME 5: ACCESS TO AMBULATORY CARE

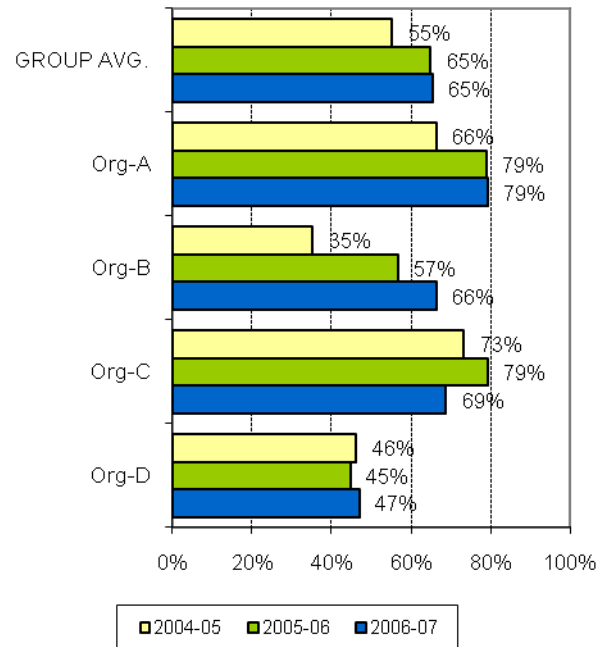




Percent of people seen by ambulatory services who reside external to catchment



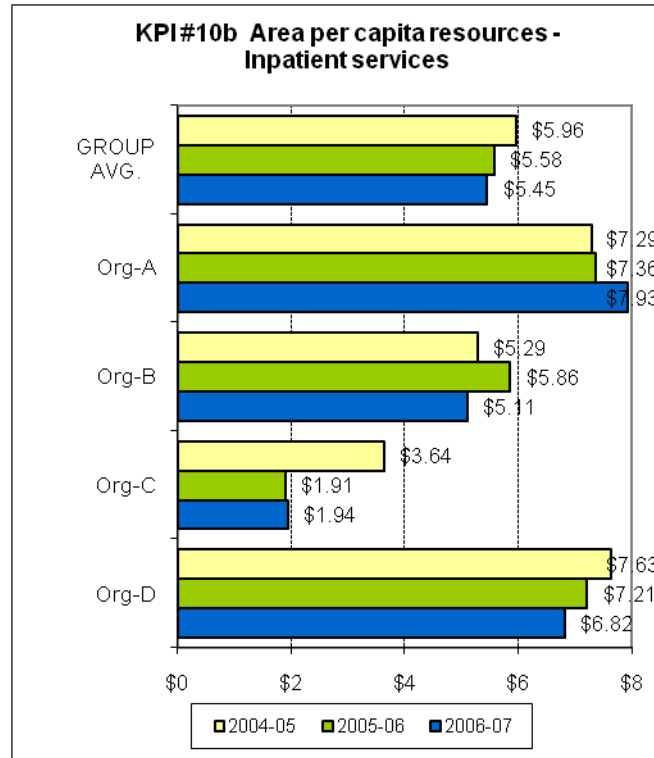
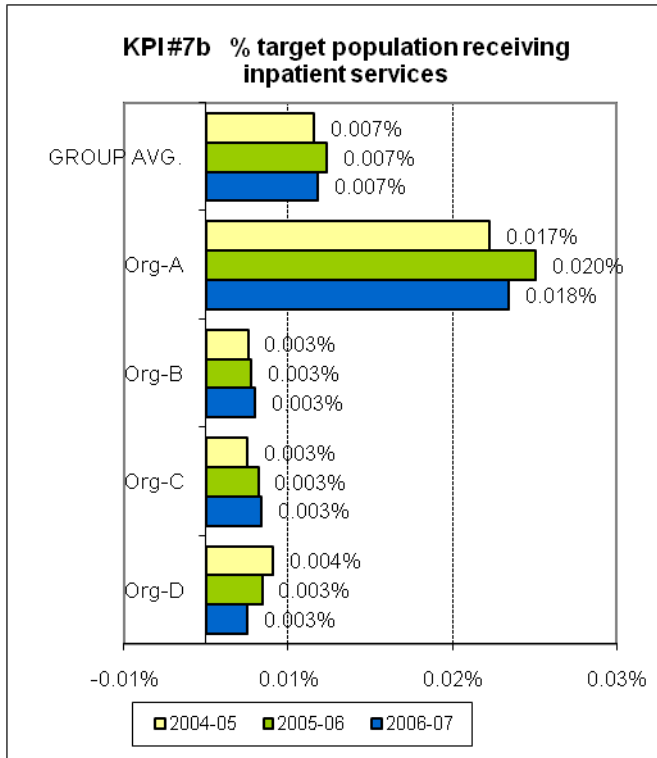
KPI#9 New client index

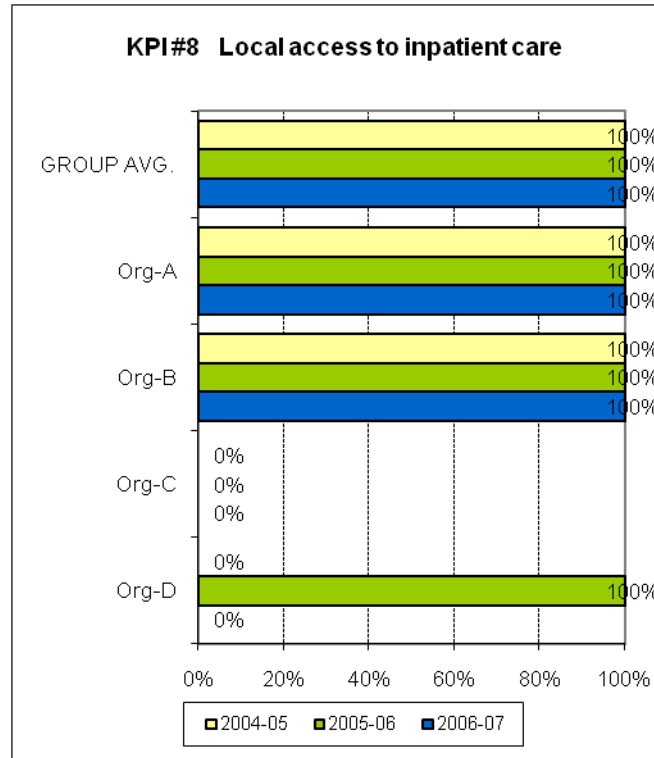


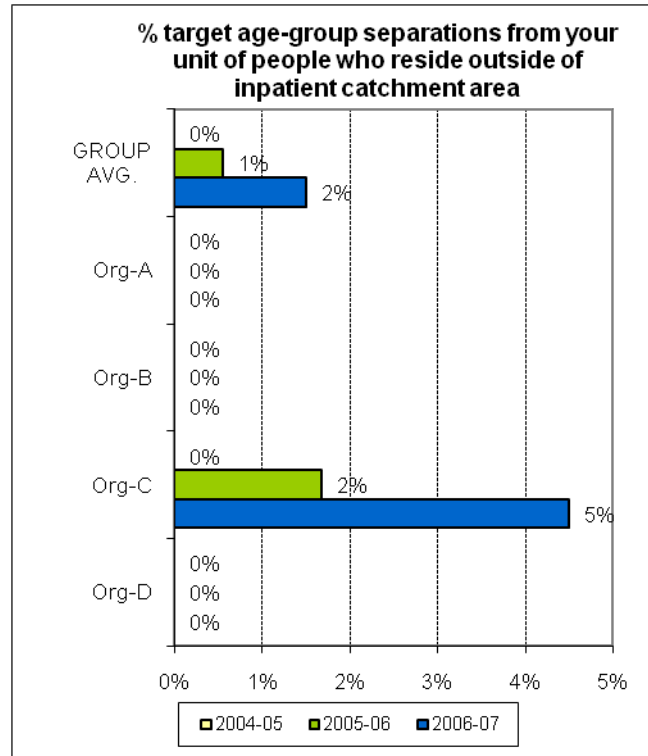
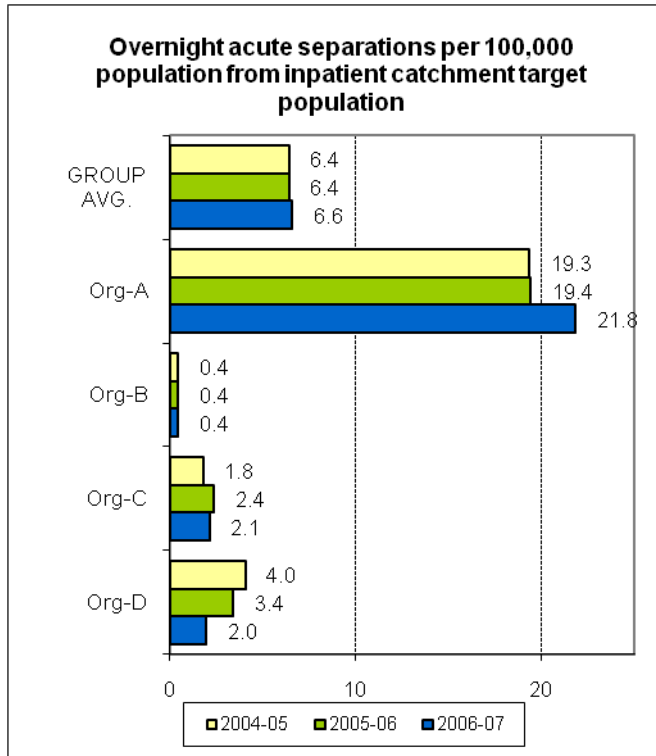
AMHOCN

"Sharing Information to
Improve Outcomes"

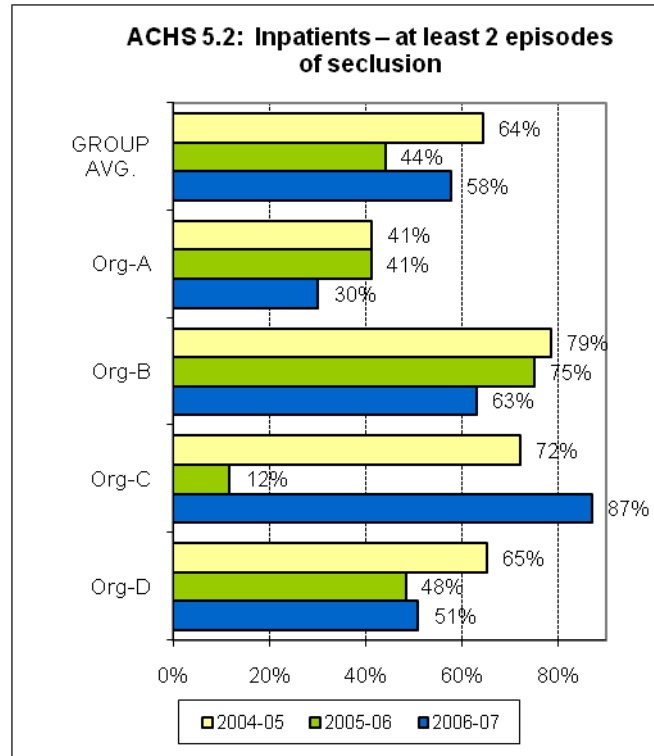
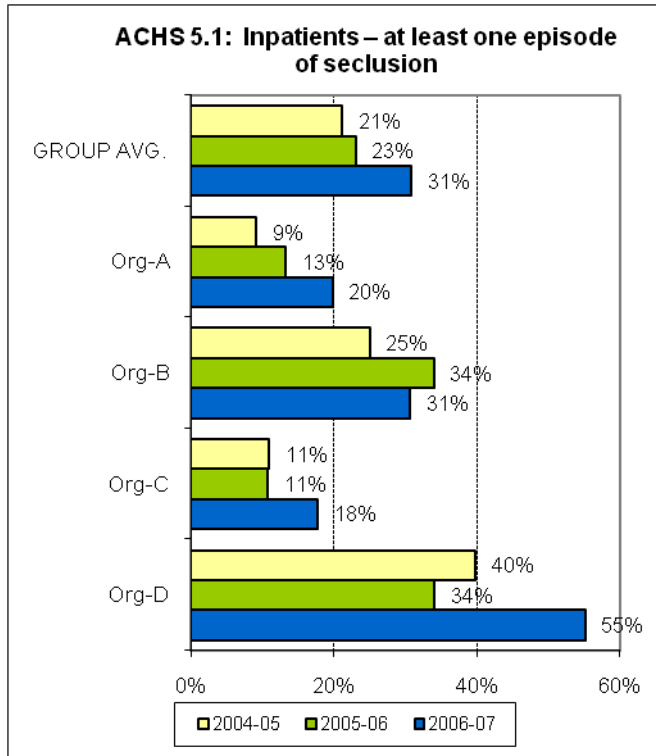
THEME 6: ACCESS TO ACUTE INPATIENT CARE

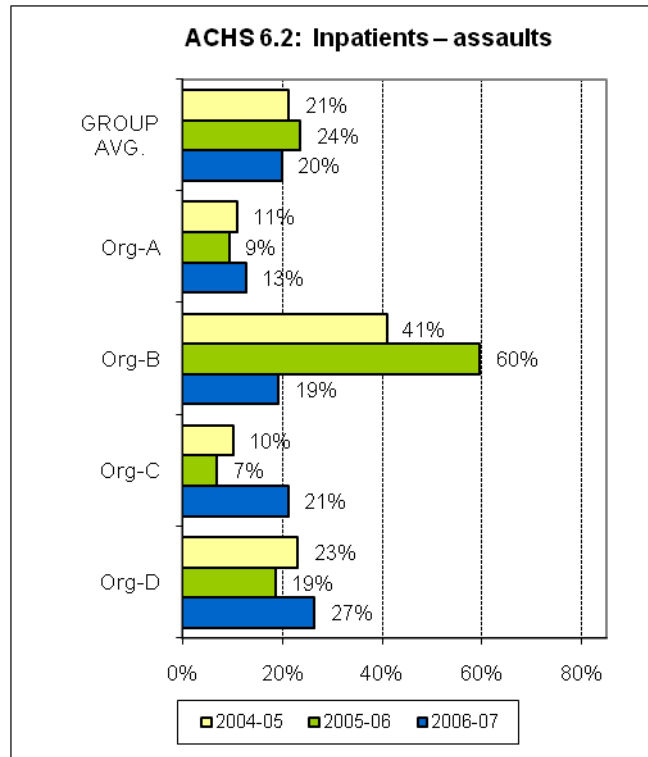
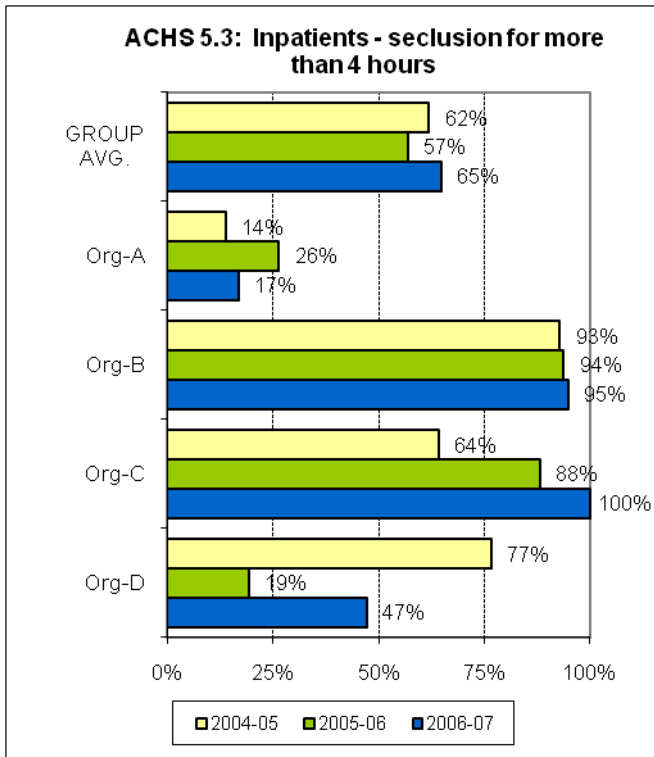


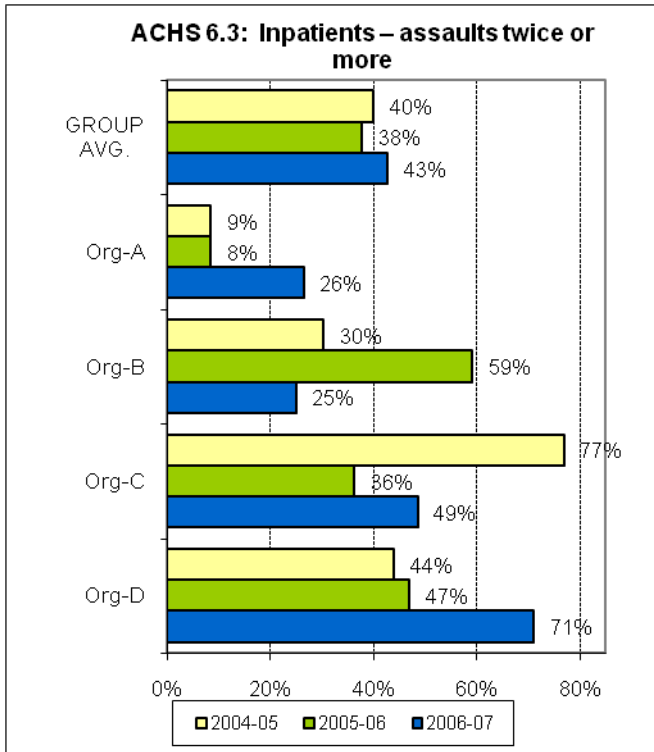




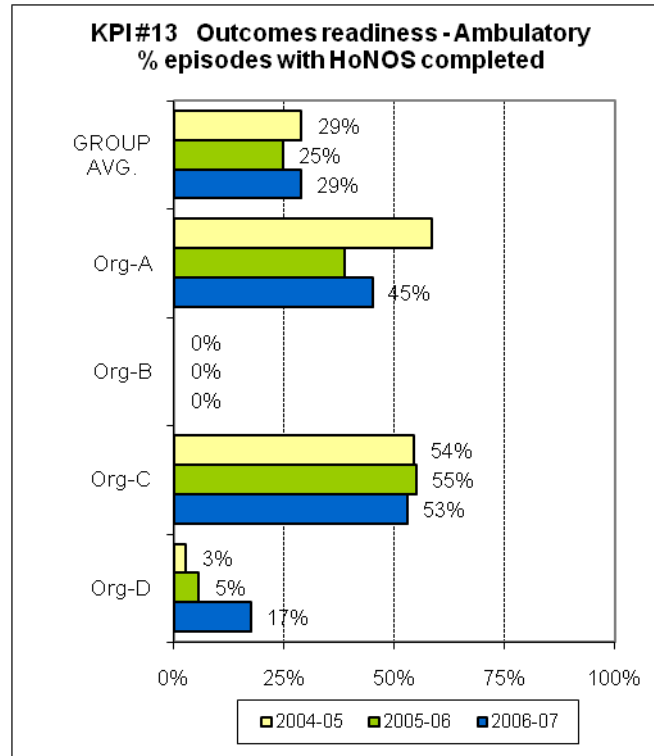
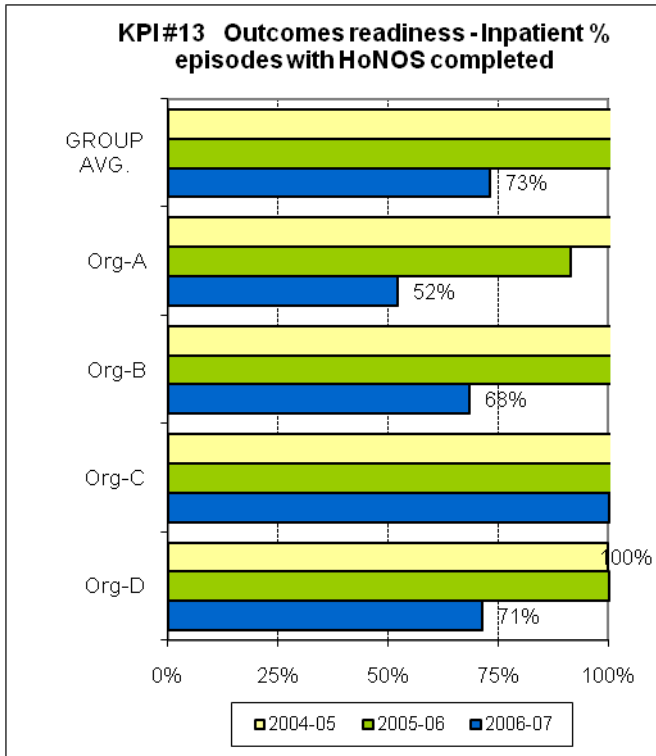
THEME 7: SAFETY (ACHS INDICATORS)



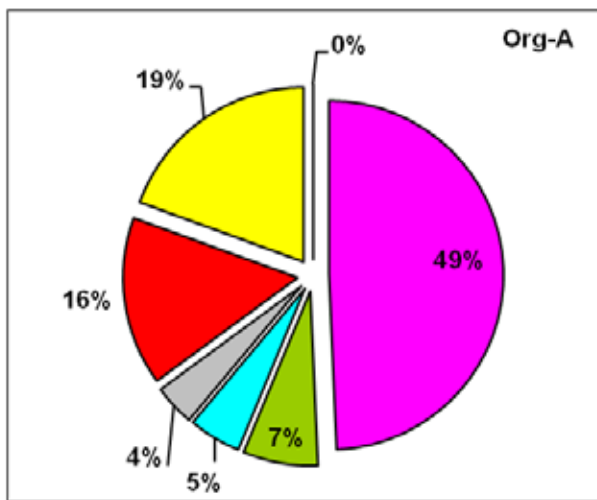
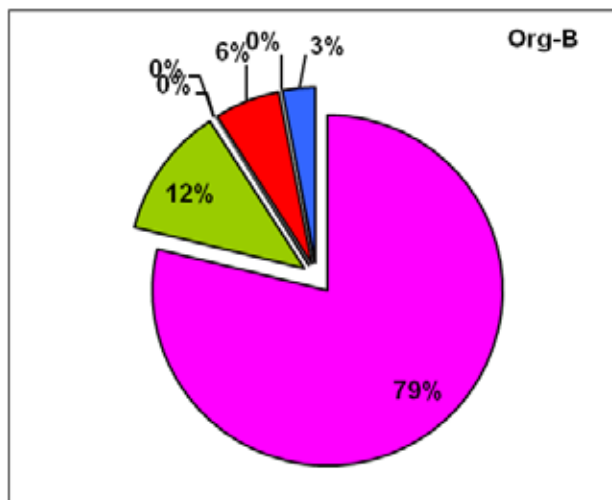
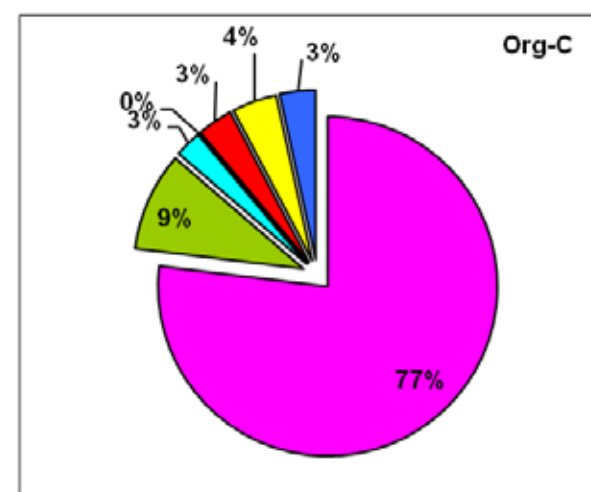
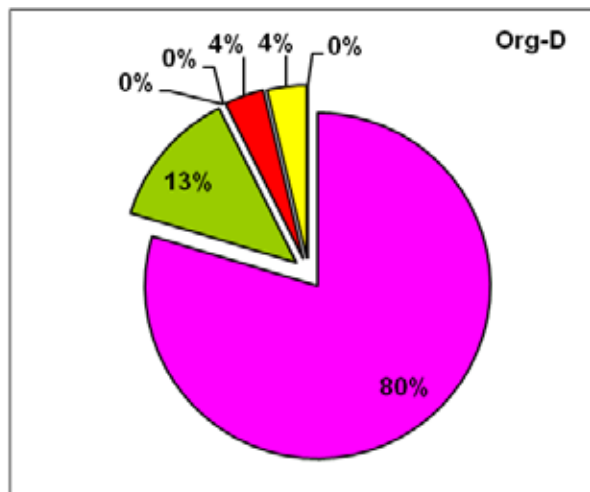
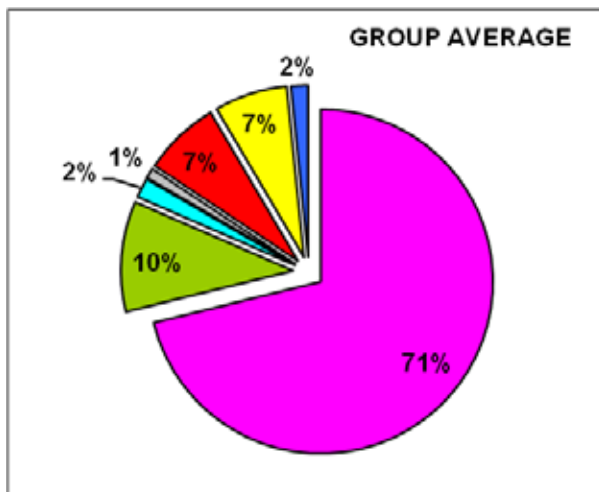




THEME 8: CAPABILITY



**THEME 9: ACUTE INPATIENT CASEMIX-
(A) DIAGNOSIS PROFILE 2006-07**



Percentage overnight separations included in the 2006-07 data:

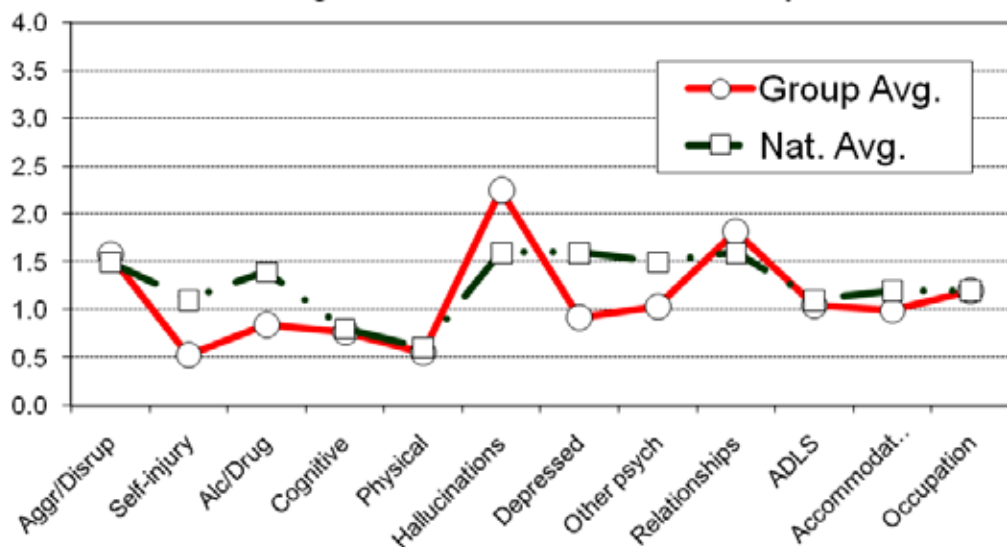
Group average	100%	Org-D	100%	Org-B	100%
		Org-C	100%	Org-A	100%



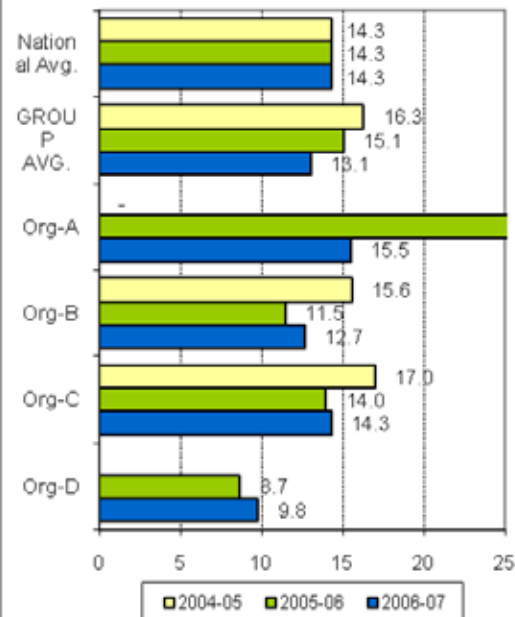
AMHOCN

"Sharing Information to Improve Outcomes"

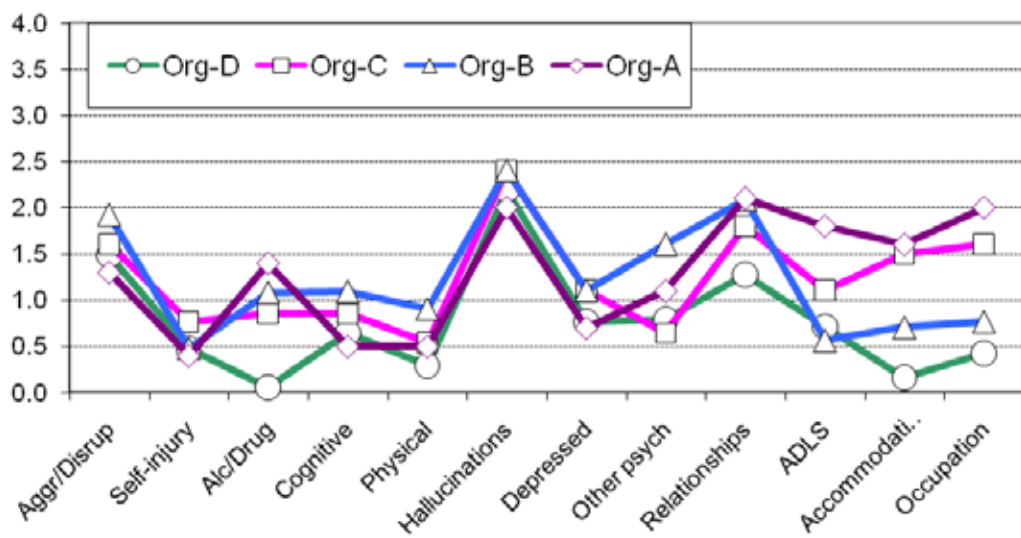
Average HoNOS scores by item - Group vs National Avg. 2006-07
National average based on Adults at admission to acute inpatient care



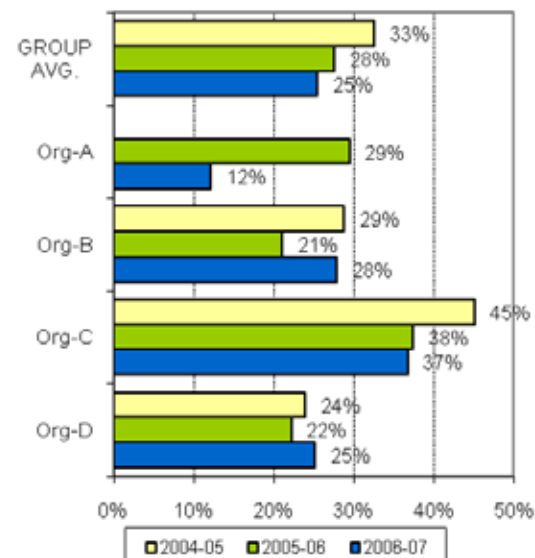
Av. HoNOS total scores at admission



Average HoNOS scores by item - Organisation comparison 2006-07



HoNOS individual item scores at admission - % clinically significant (> 2)



UNGROUPED SUPPLEMENTARY INDICATORS

