



A joint Australian,
State and Territory
Government Initiative

National Mental Health Benchmarking Project

An Australian Government funded initiative

COMPARATIVE INDICATORS

3-year time series 2004-05 to 2006-07

Older Persons Mental Health Services Forum

Version 1.0 Summary for Public Release

Australian Mental Health Outcomes and Classification Network
November 2008

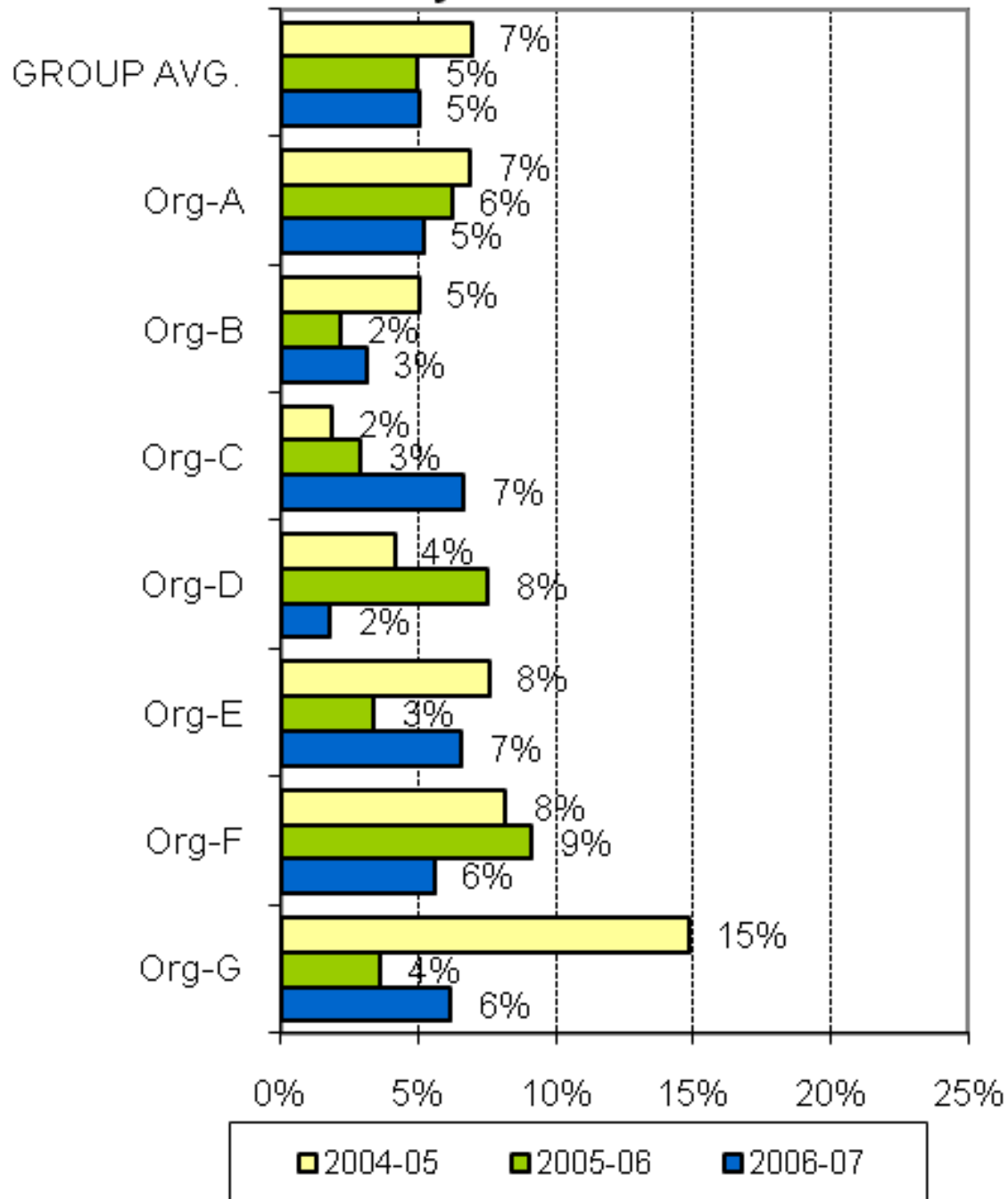


AMHOCN

"Sharing Information to
Improve Outcomes"

This document was prepared from a more detailed version developed for restricted use by organisations participating in the National Mental Health Benchmarking Project. By agreement of all organisations, this version of the indicators has been prepared for wider use and unrestricted distribution. All identifying details and source data tables have been removed from this version.

KPI#1 28-day readmission rate



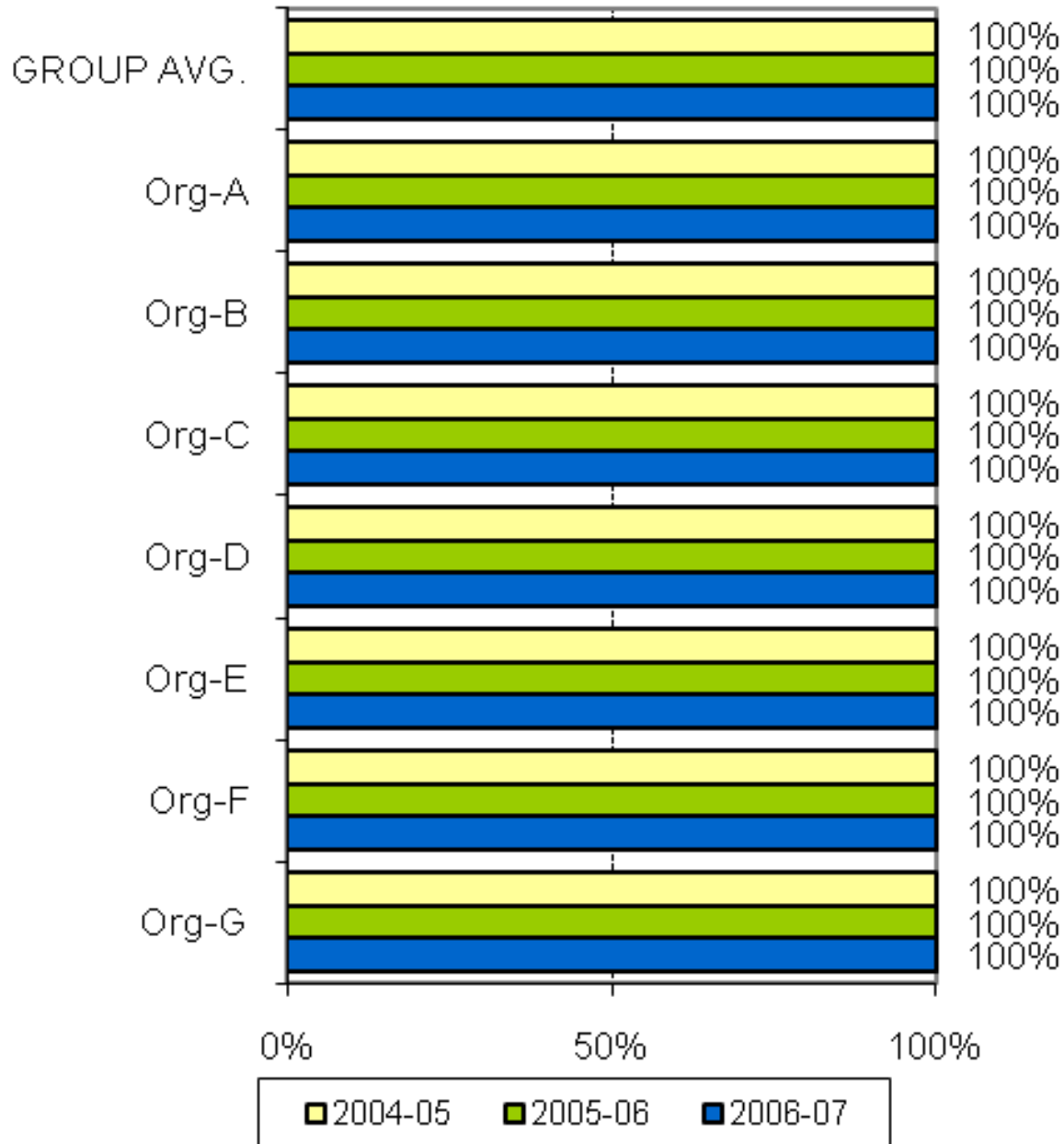
A joint Australian, State and Territory Government Initiative



AMHOCN

"Sharing Information to Improve Outcomes"

KPI#2 National Standards compliance (Level 1 compliance)



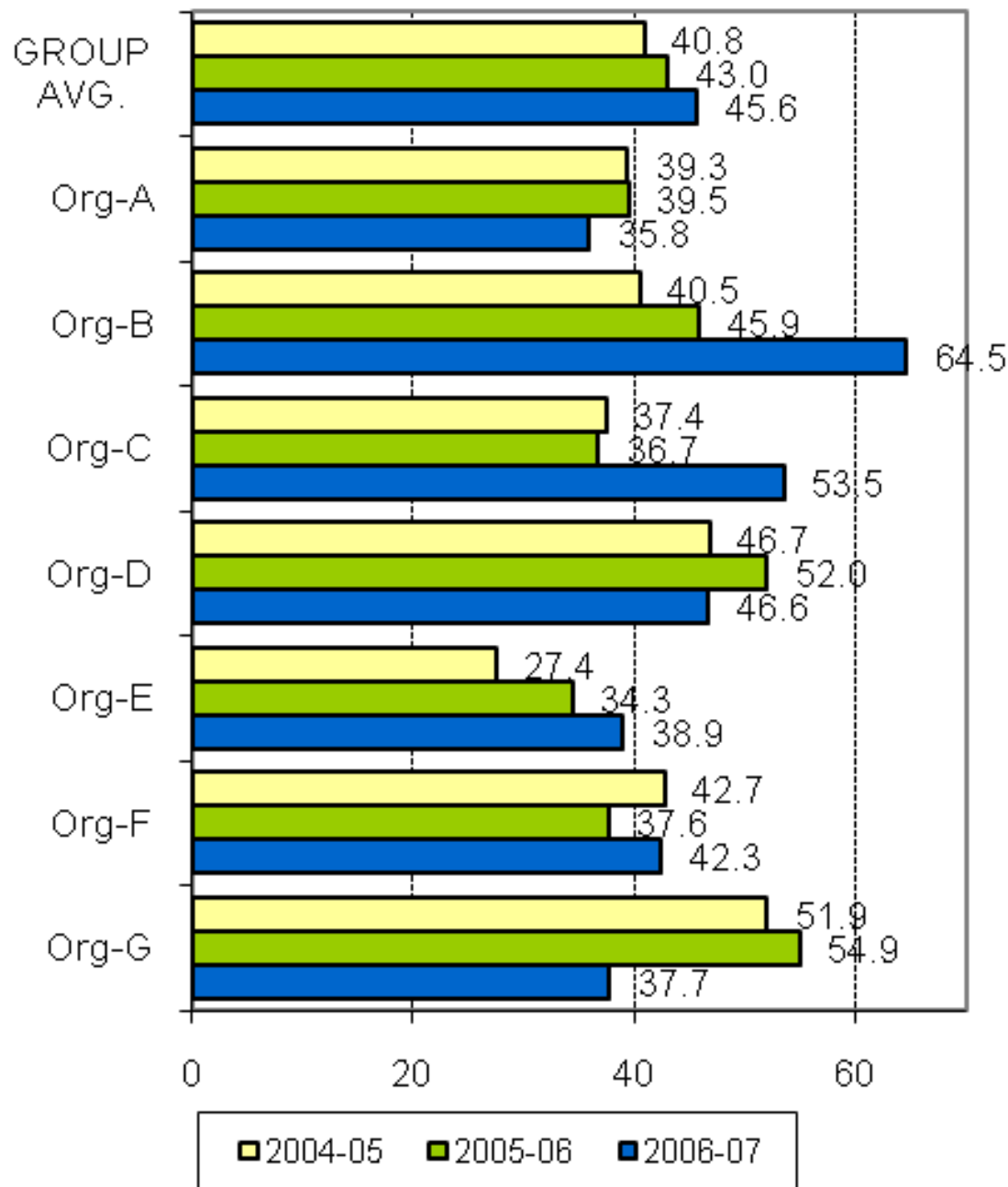
A joint Australian,
State and Territory
Government Initiative



AMHOCN

"Sharing Information to
Improve Outcomes"

KPI#3 Average acute length of stay



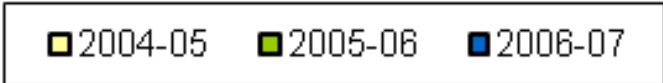
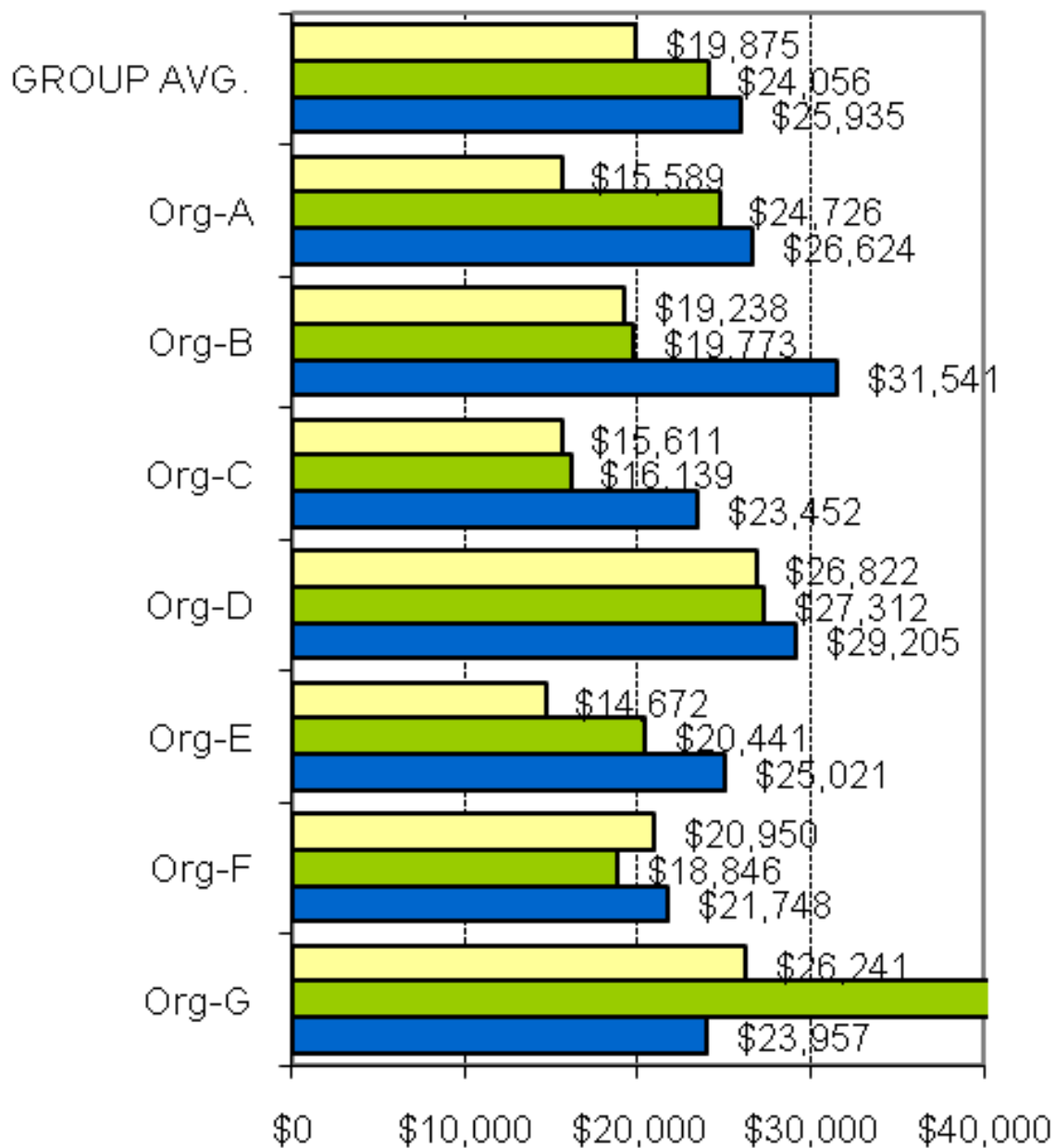
A joint Australian, State and Territory Government Initiative



AMHOCN

"Sharing Information to Improve Outcomes"

KPI#4 Cost per acute inpatient episode



A joint Australian, State and Territory Government Initiative



AMHOCN

"Sharing Information to Improve Outcomes"

KPI#5 Average treatment days per 3 month period of community care



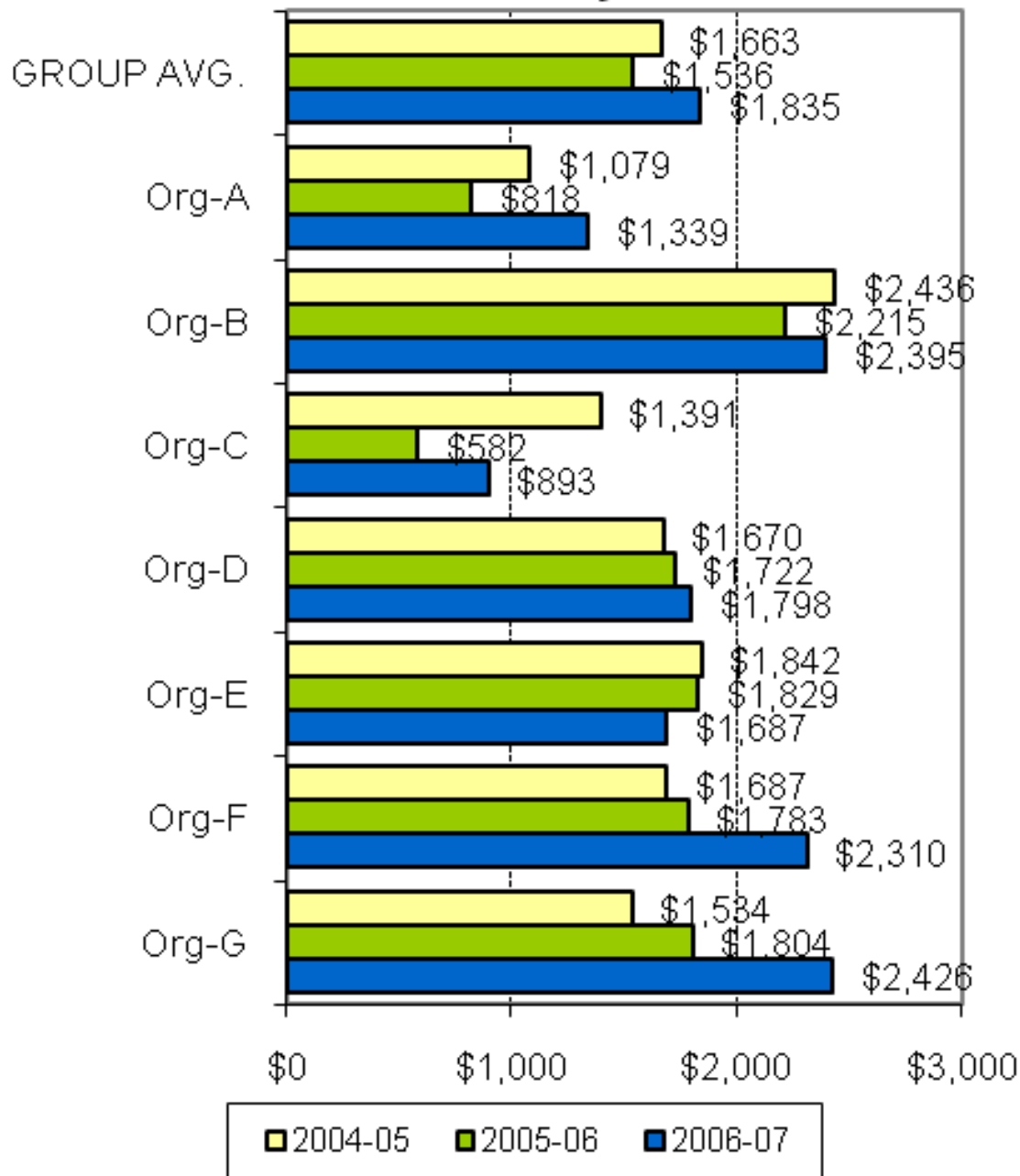
A joint Australian,
State and Territory
Government Initiative



AMHOCN

"Sharing Information to
Improve Outcomes"

KPI#6 Average cost per 3 month period of community care



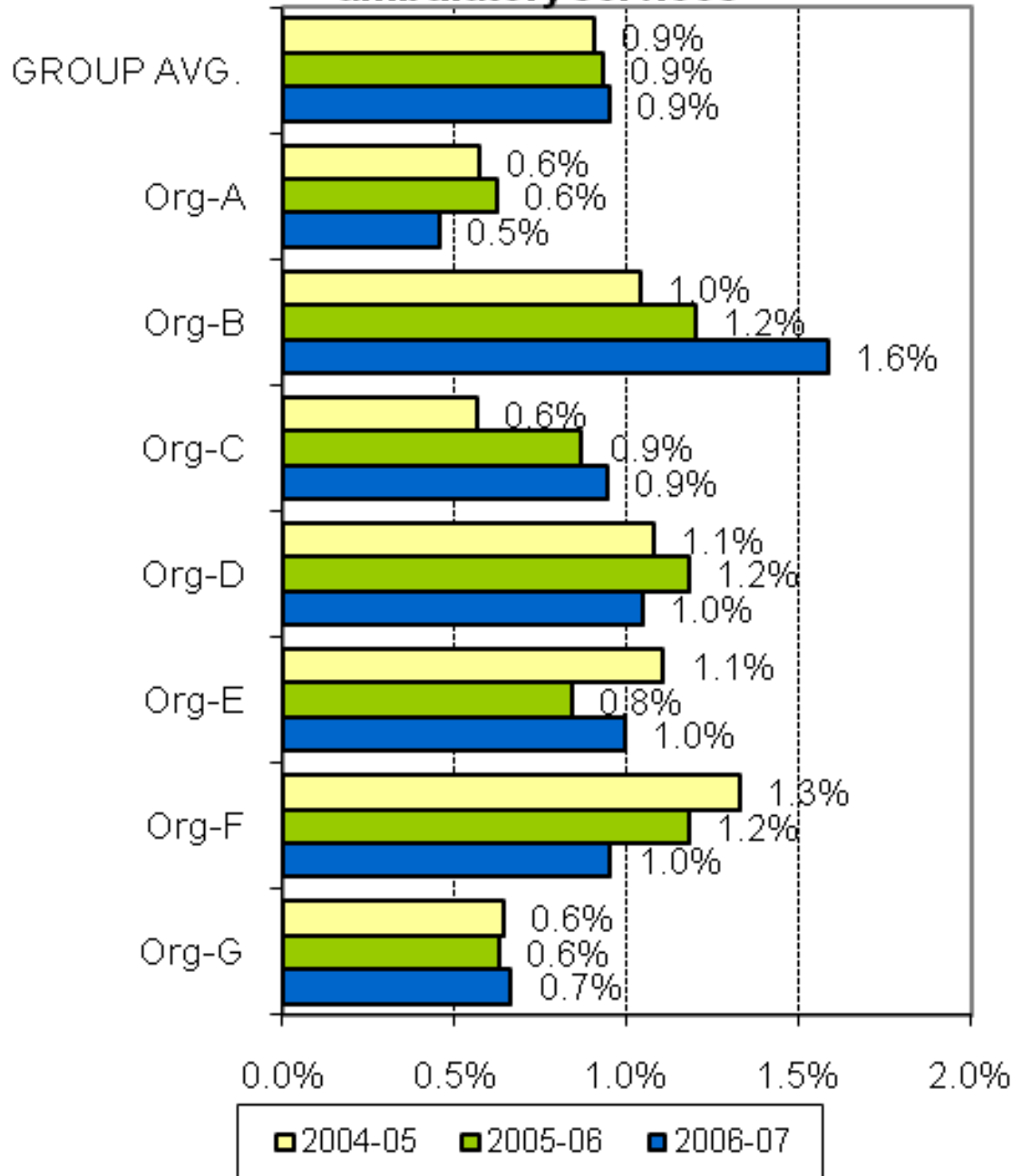
A joint Australian, State and Territory Government Initiative



AMHOCN

"Sharing Information to Improve Outcomes"

KPI#7a % target population receiving ambulatory services



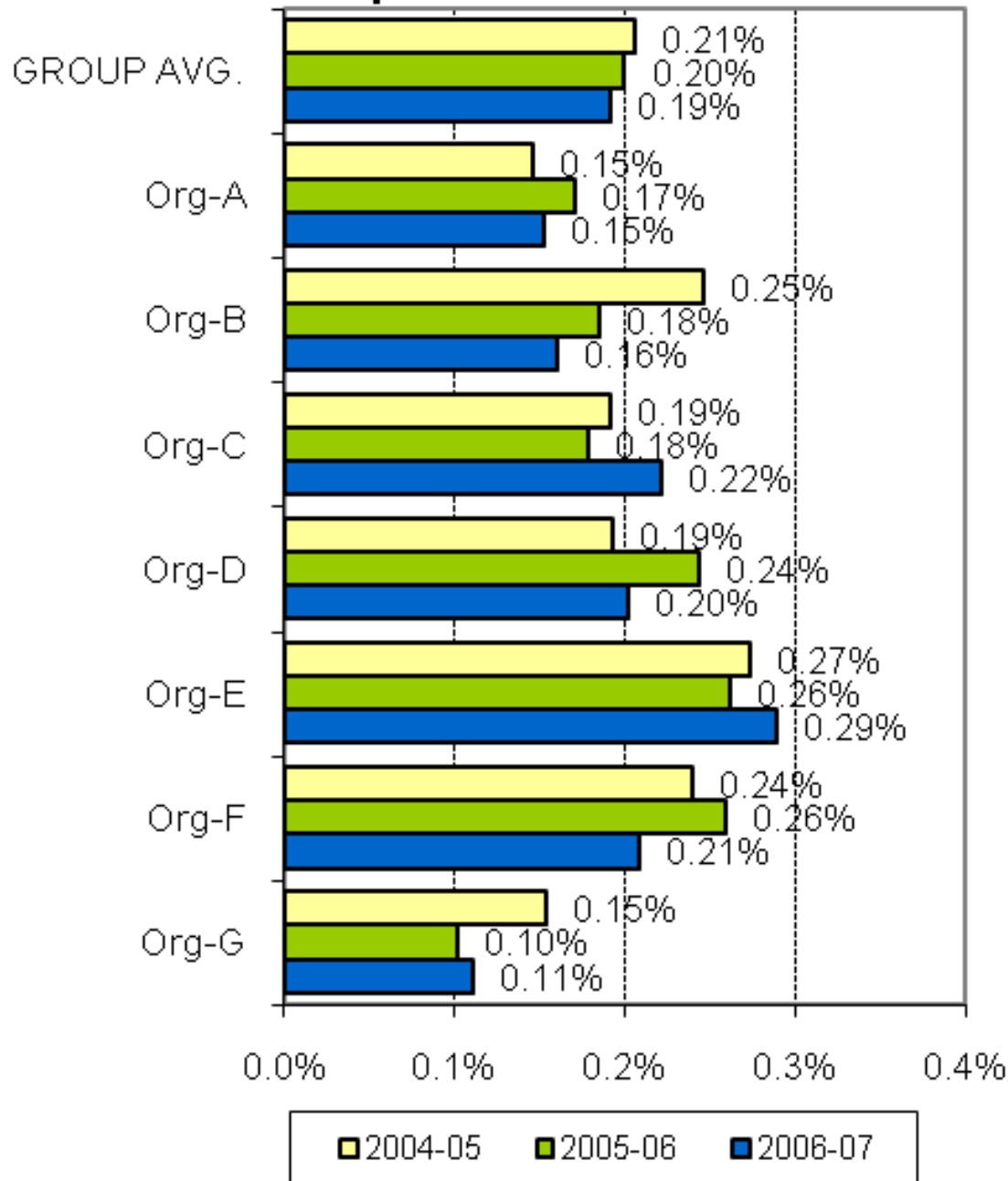
A joint Australian, State and Territory Government Initiative



AMHOCN

"Sharing Information to Improve Outcomes"

KPI#7b % target population receiving inpatient services



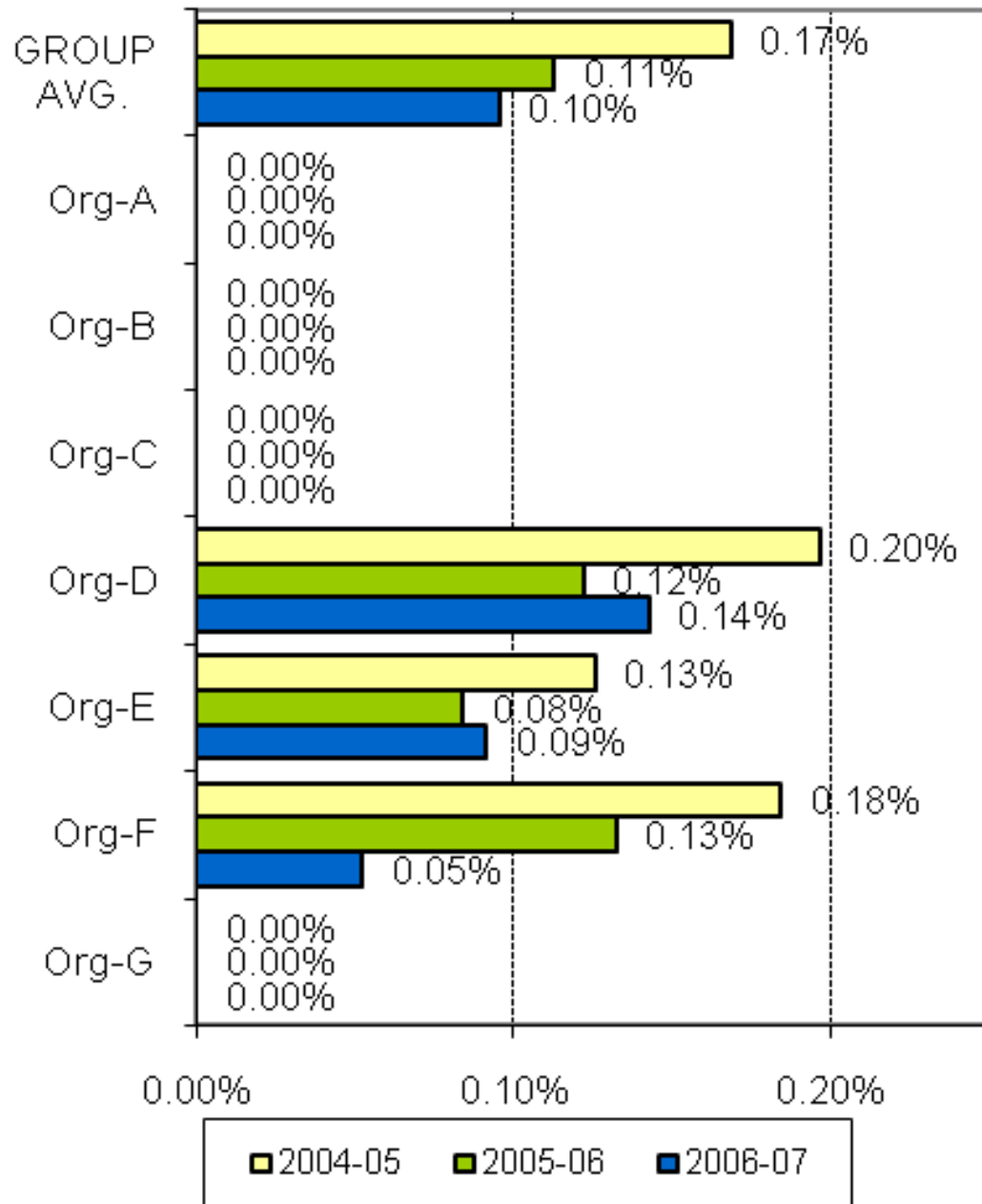
A joint Australian,
State and Territory
Government Initiative



AMHOCN

"Sharing Information to
Improve Outcomes"

KPI#7c % target population receiving residential services



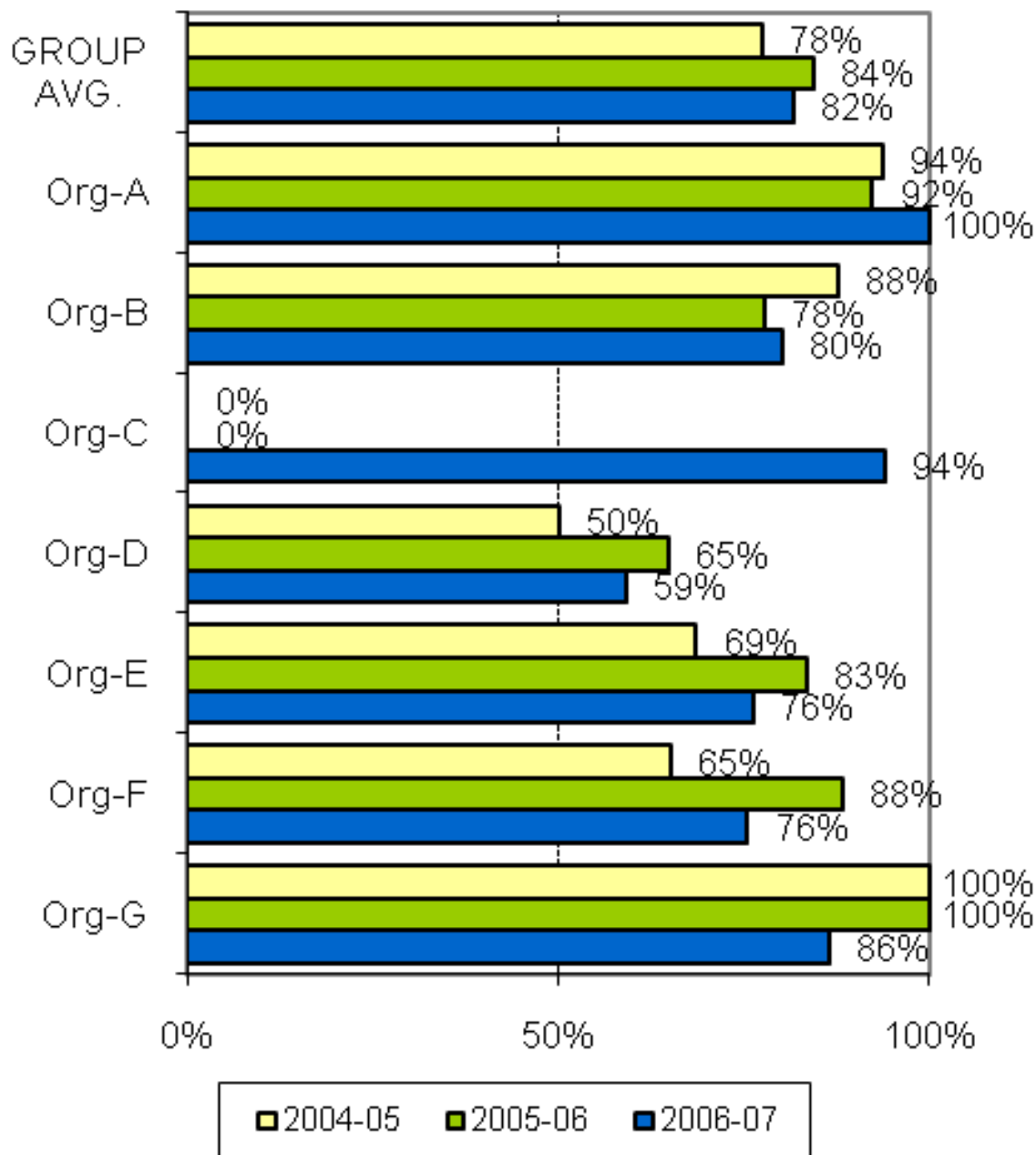
A joint Australian, State and Territory Government Initiative



AMHOCN

"Sharing Information to Improve Outcomes"

KPI#8 Local access to inpatient care



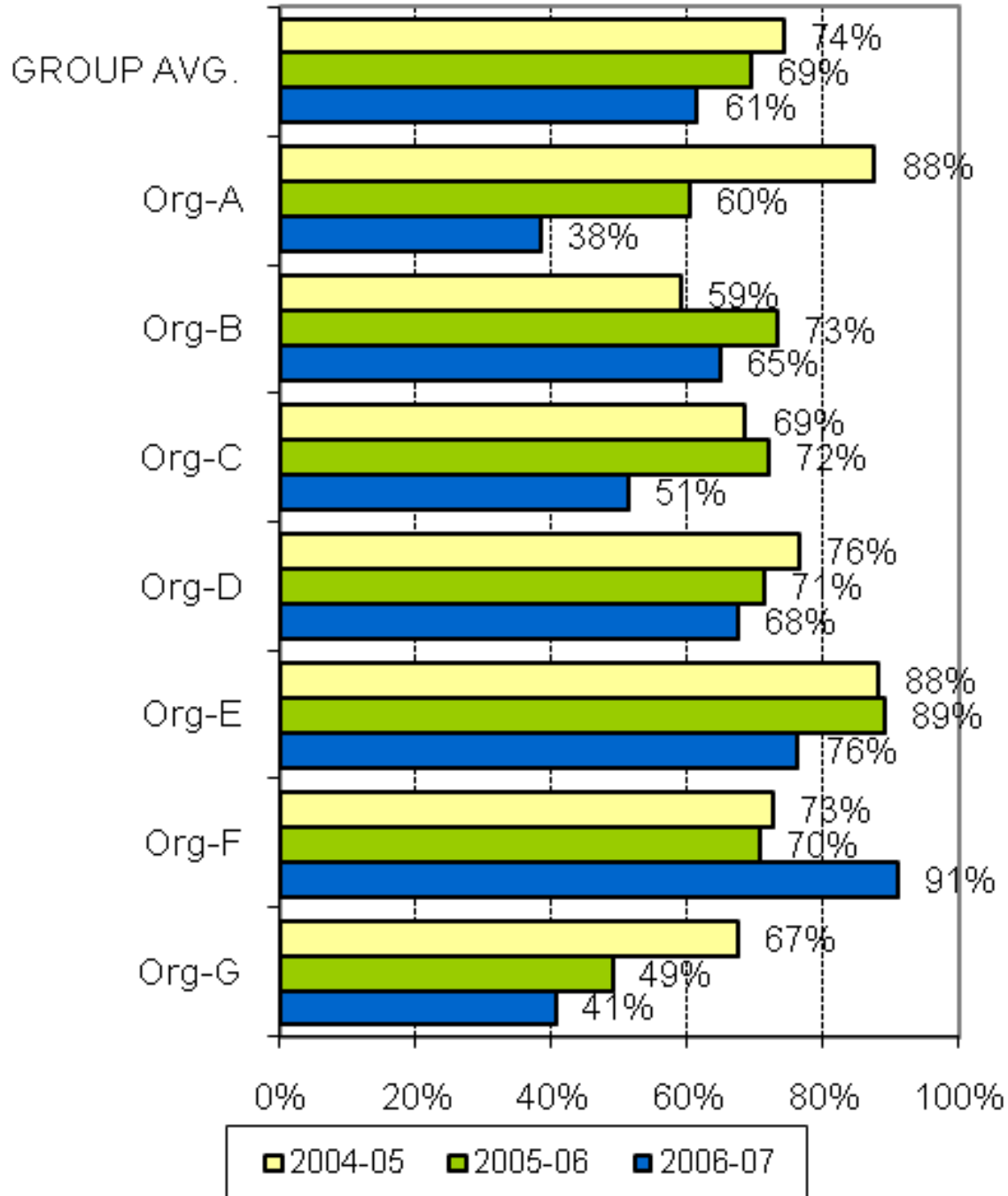
A joint Australian, State and Territory Government Initiative



AMHOCN

"Sharing Information to Improve Outcomes"

KPI#9 New client index



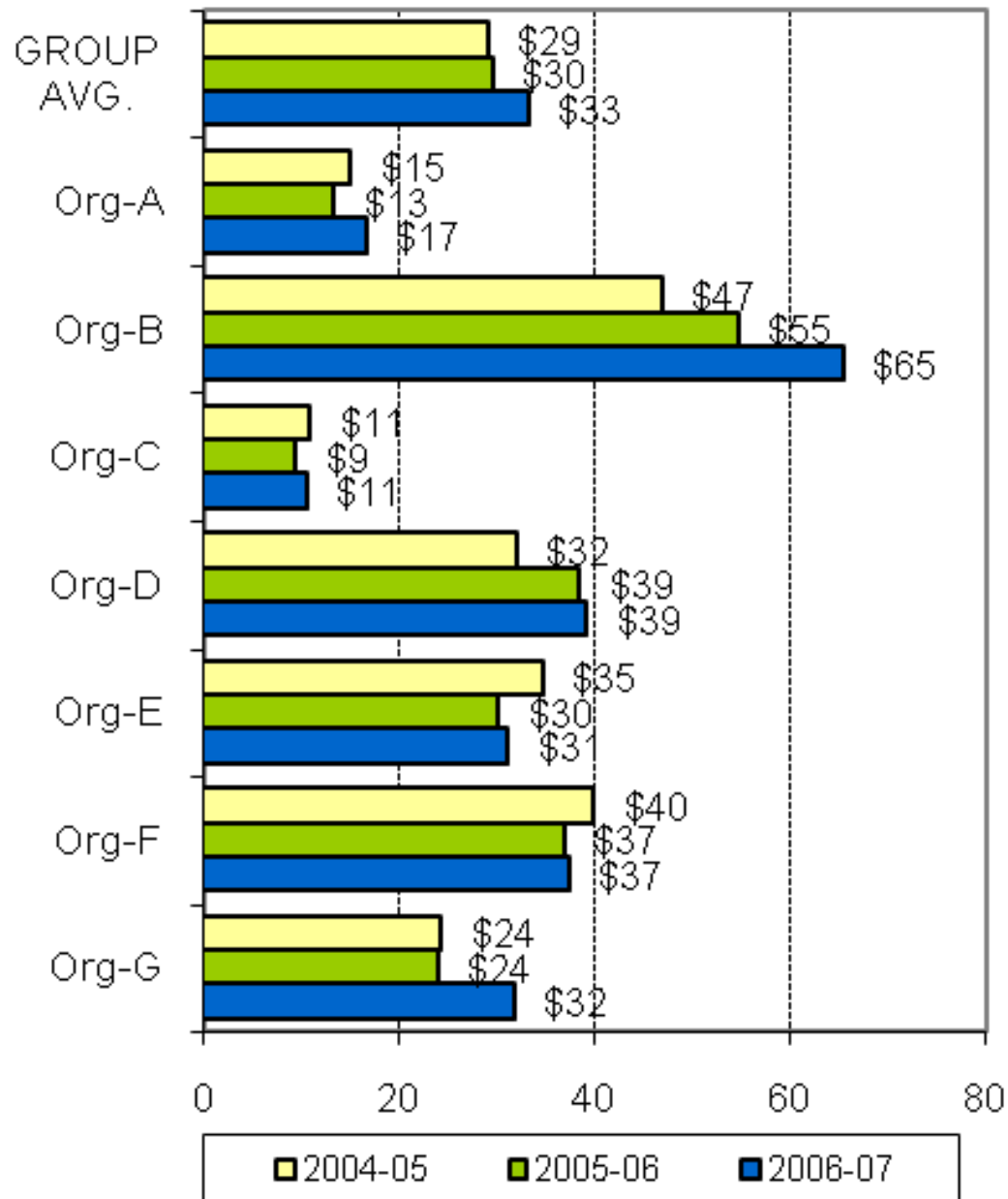
A joint Australian,
State and Territory
Government Initiative



AMHOCN

"Sharing Information to
Improve Outcomes"

KPI#10a Area per capita resources - Ambulatory services (Expenditure)



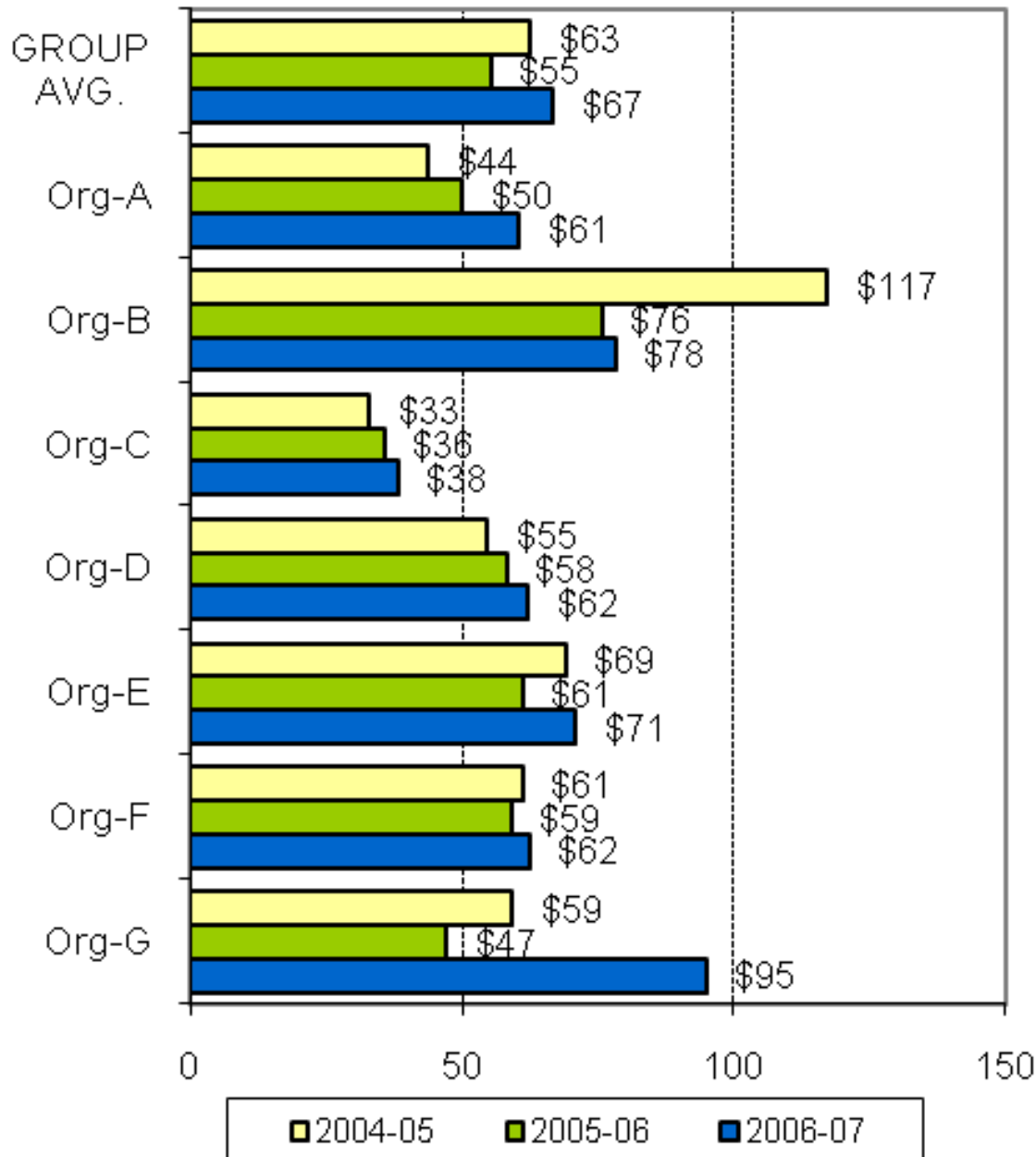
A joint Australian, State and Territory Government Initiative



AMHOCN

"Sharing Information to Improve Outcomes"

KPI#10b Area per capita resources - Inpatient services



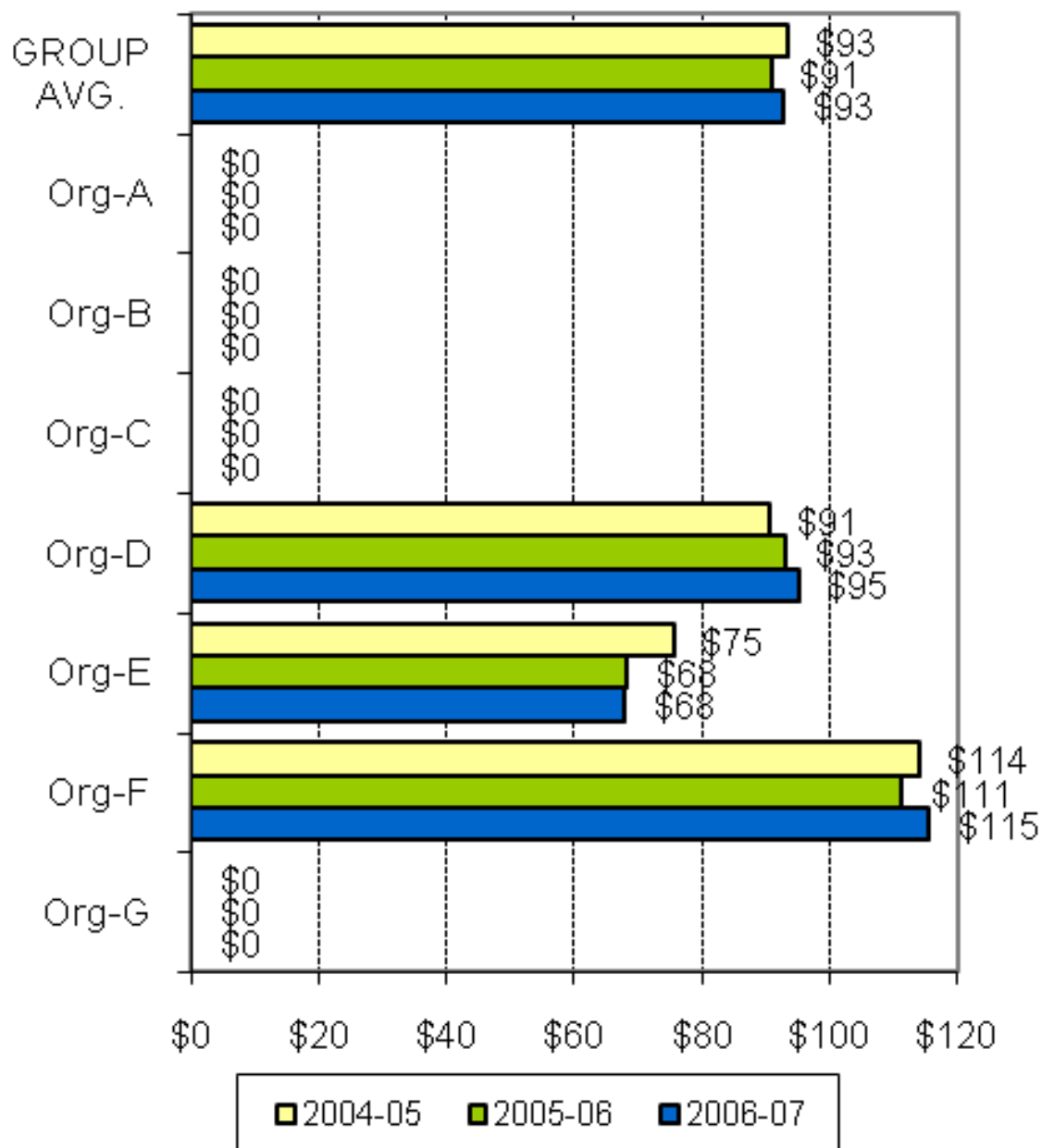
A joint Australian,
State and Territory
Government Initiative



AMHOCN

"Sharing Information to
Improve Outcomes"

KPI#10c Area per capita resources - Residential services (Expenditure)



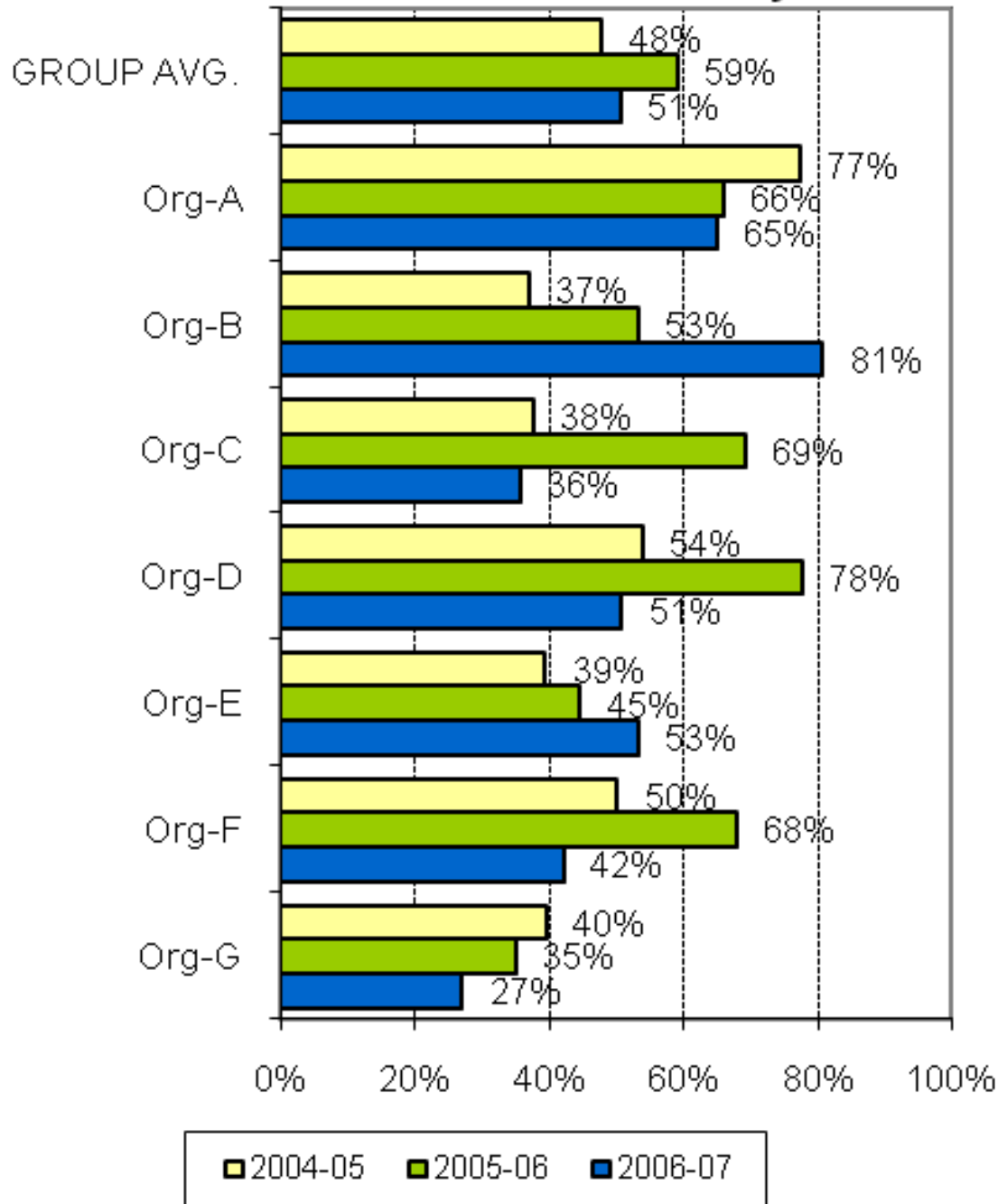
A joint Australian, State and Territory Government Initiative



AMHOCN

"Sharing Information to Improve Outcomes"

KPI#11 Pre admission community care



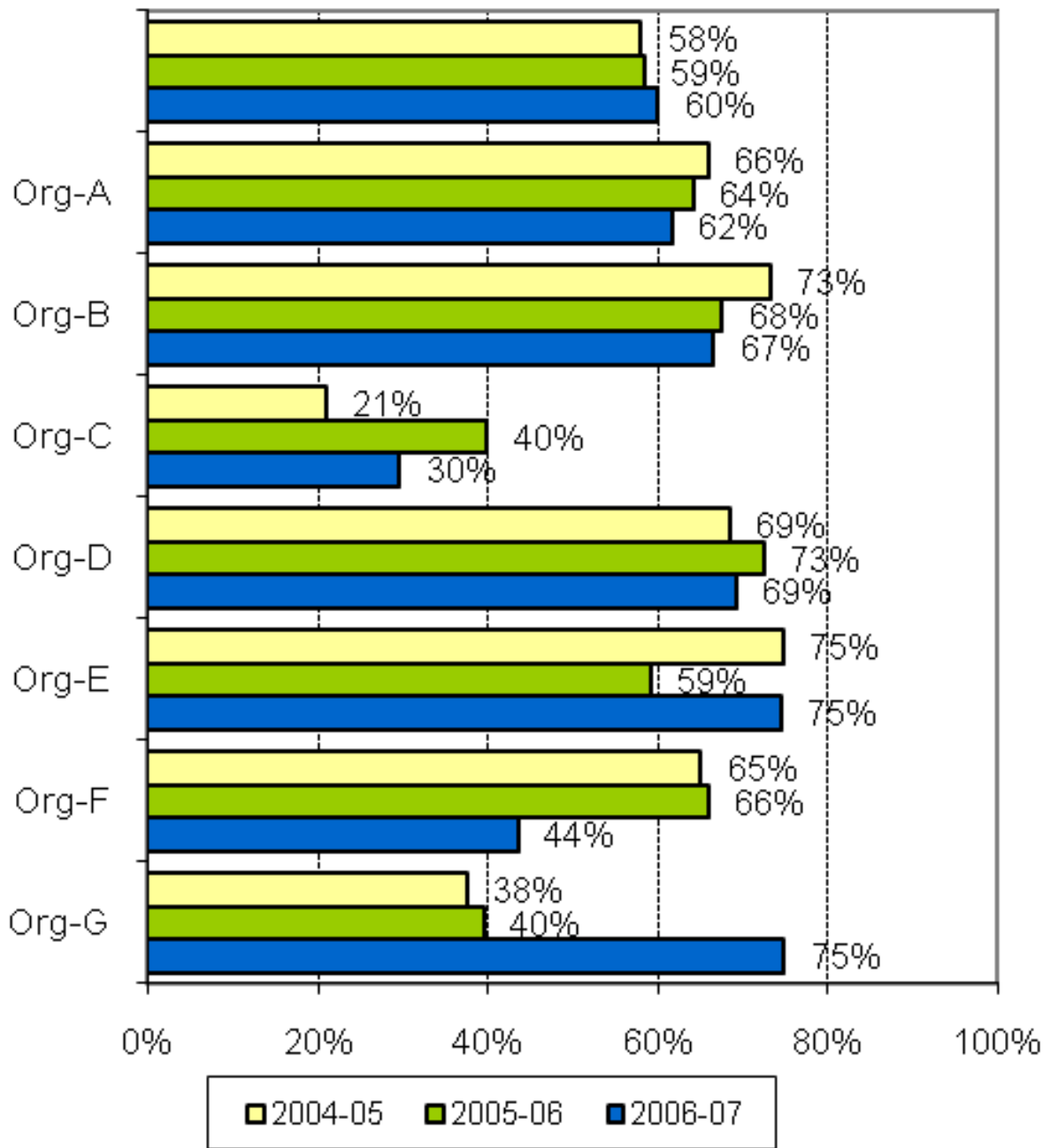
A joint Australian, State and Territory Government Initiative



AMHOCN

"Sharing Information to Improve Outcomes"

KPI#12 Post discharge community care



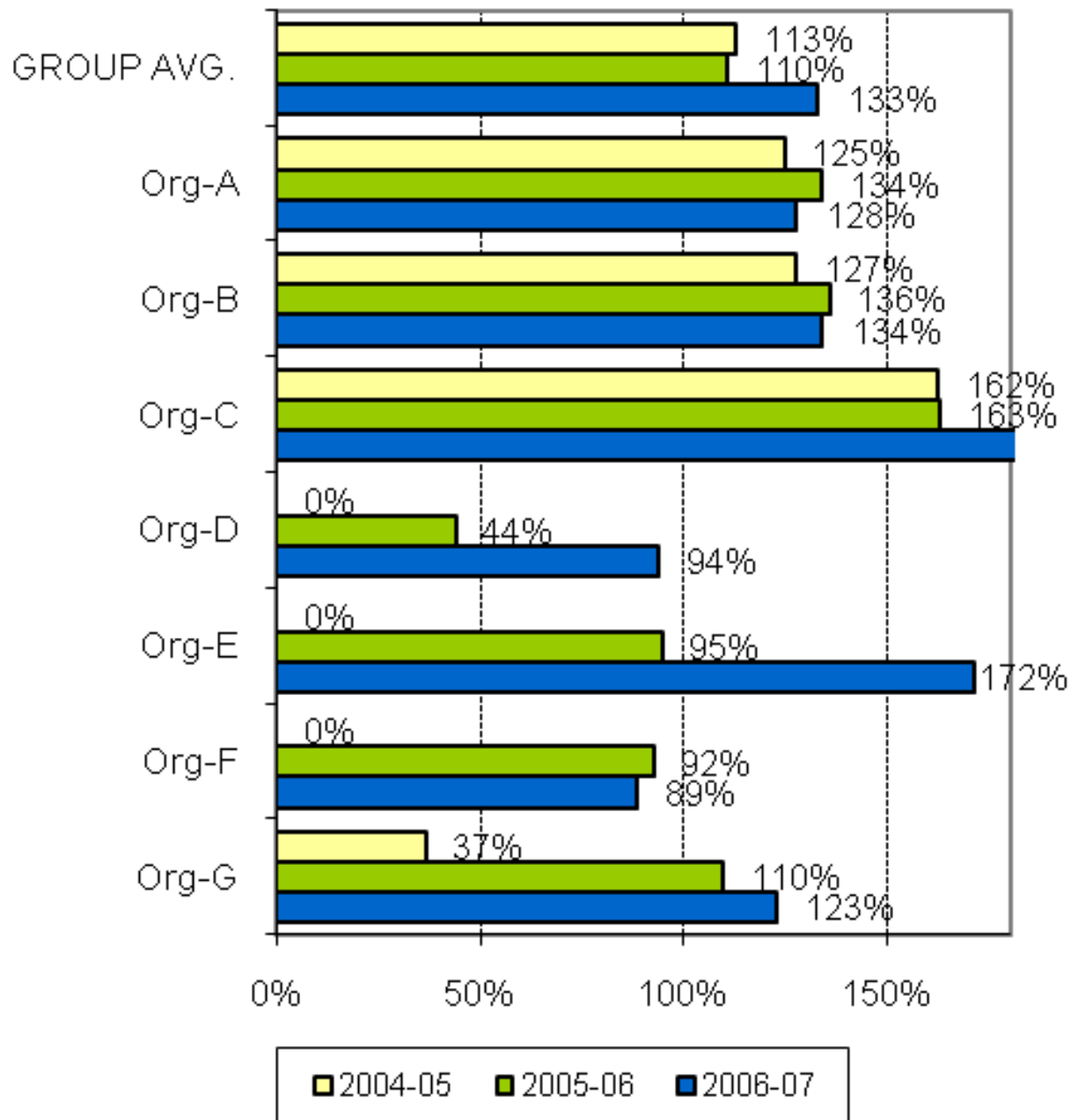
A joint Australian, State and Territory Government Initiative



AMHOCN

"Sharing Information to Improve Outcomes"

KPI#13 Outcomes readiness - Inpatient



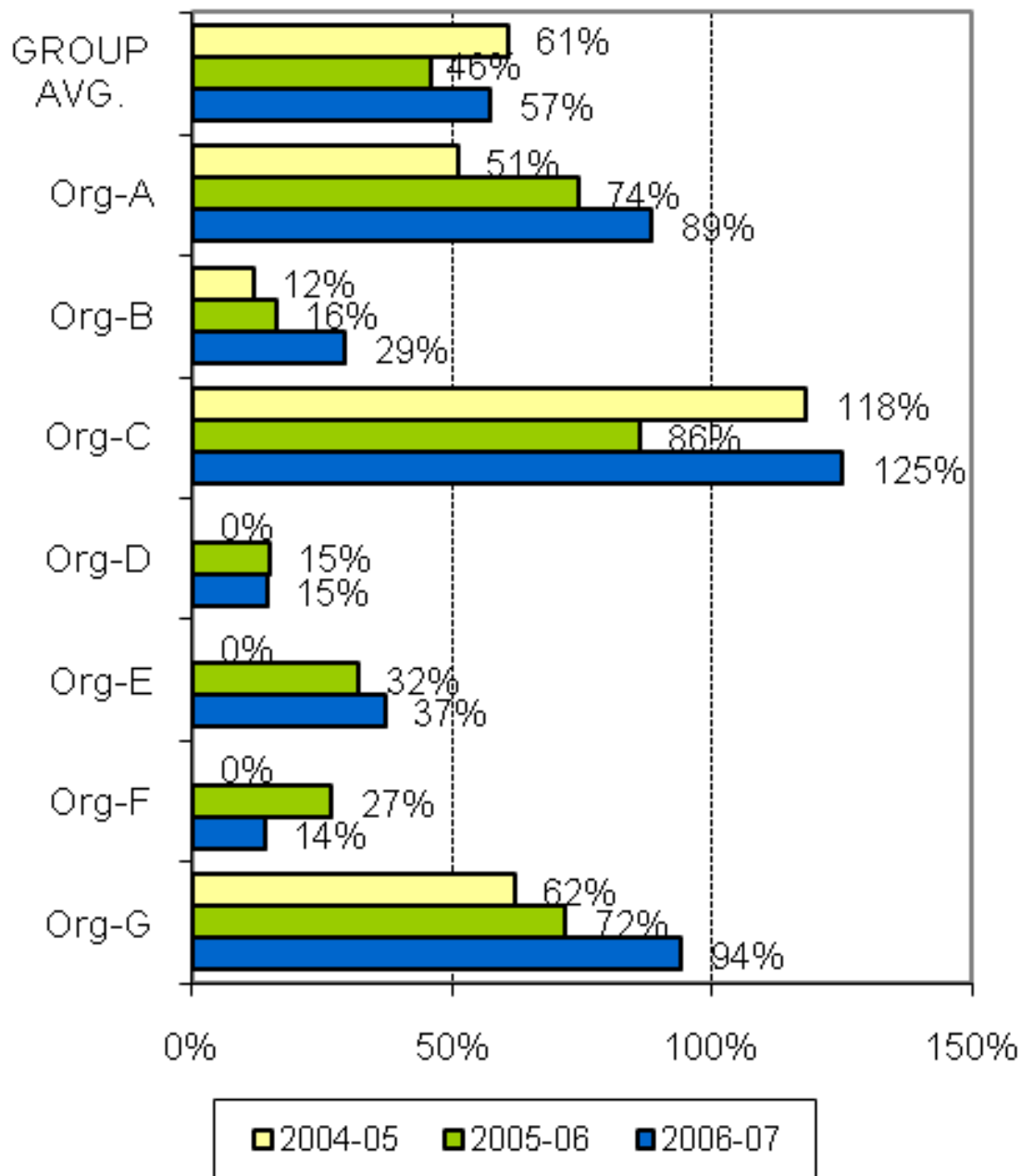
A joint Australian, State and Territory Government Initiative



AMHOCN

"Sharing Information to Improve Outcomes"

KPI#13 Outcomes readiness - Ambulatory



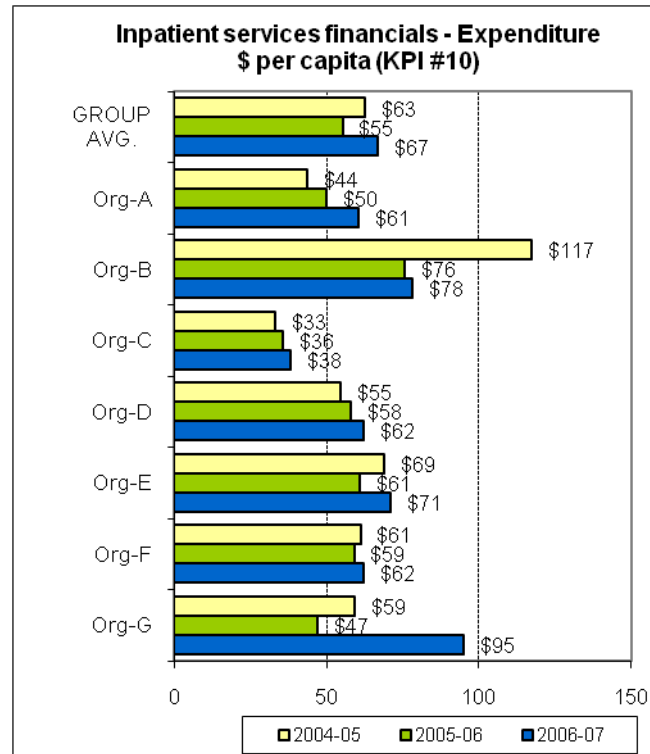
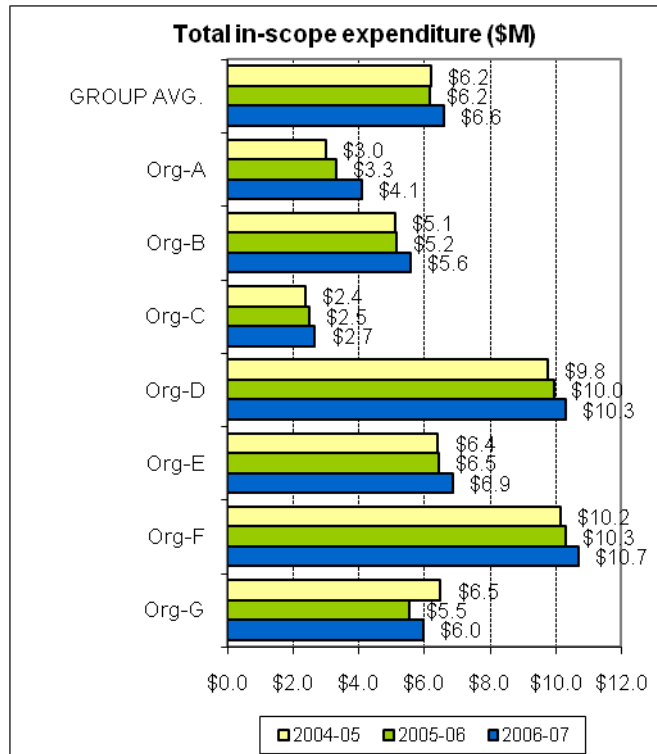
A joint Australian, State and Territory Government Initiative



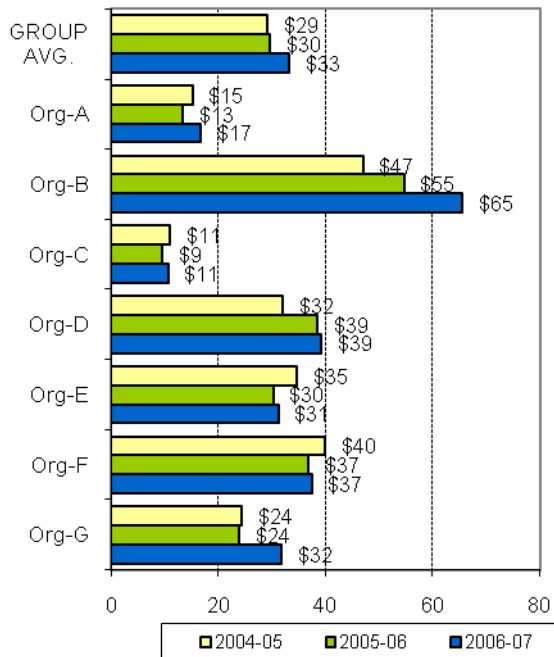
AMHOCN

"Sharing Information to Improve Outcomes"

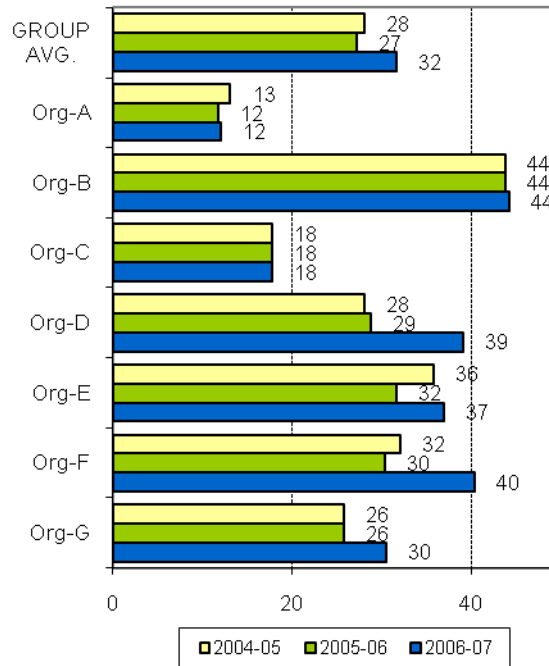
THEME 1: COMPARATIVE RESOURCES AVAILABLE TO THE ORGANISATION

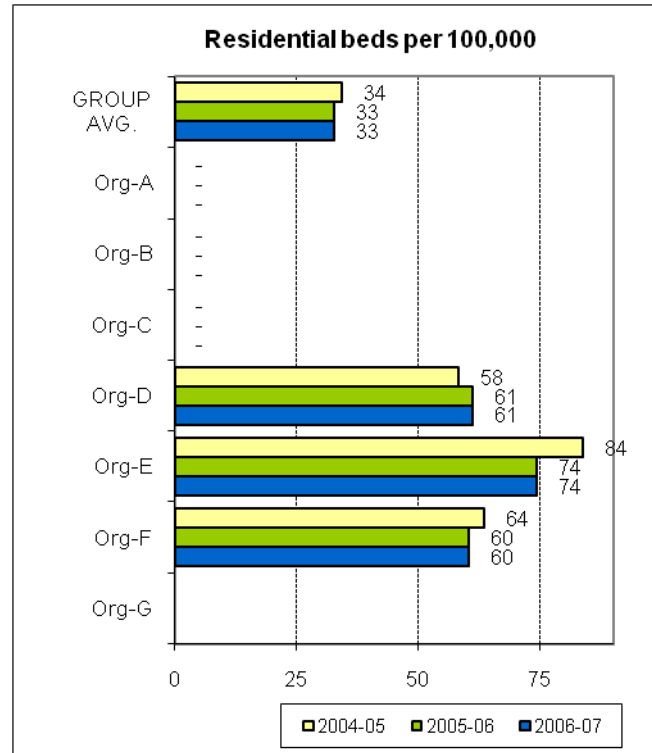
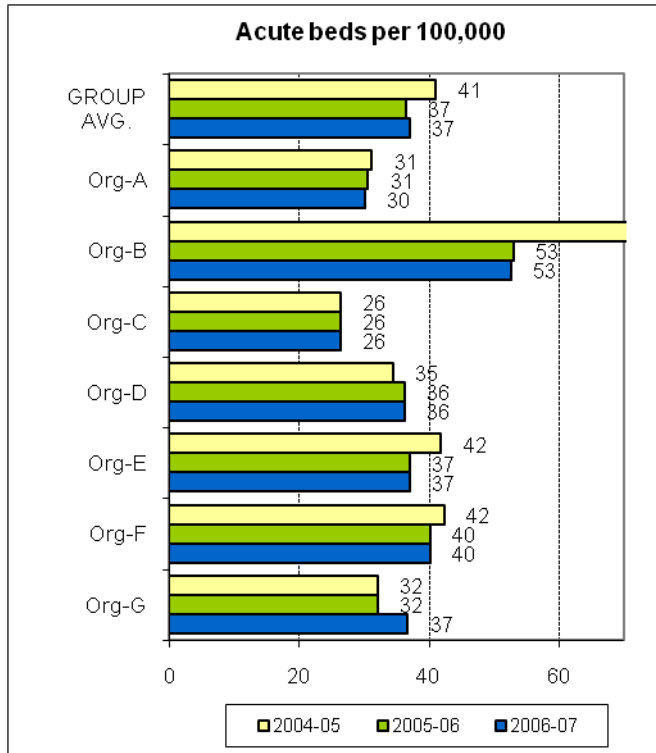


**Ambulatory care financials - Expenditure
\$ per capita (KPI #10a)**

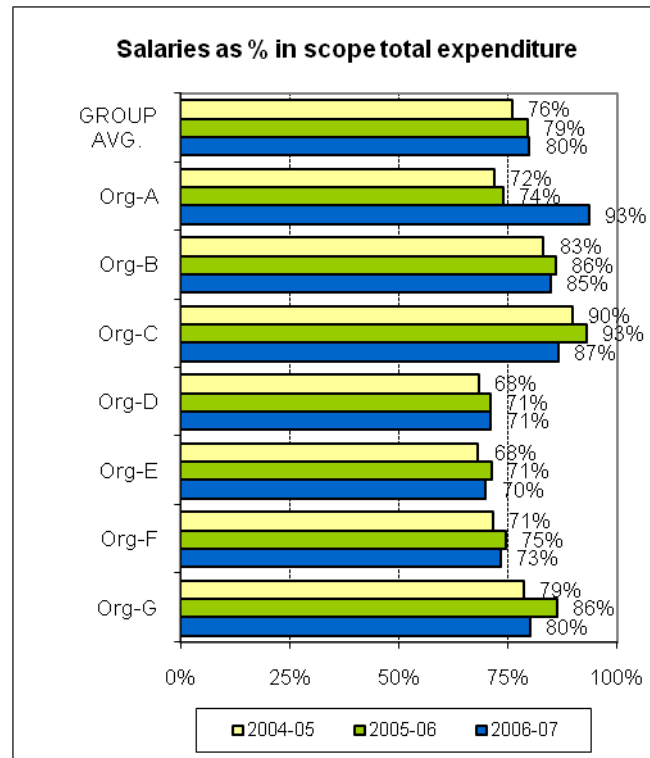
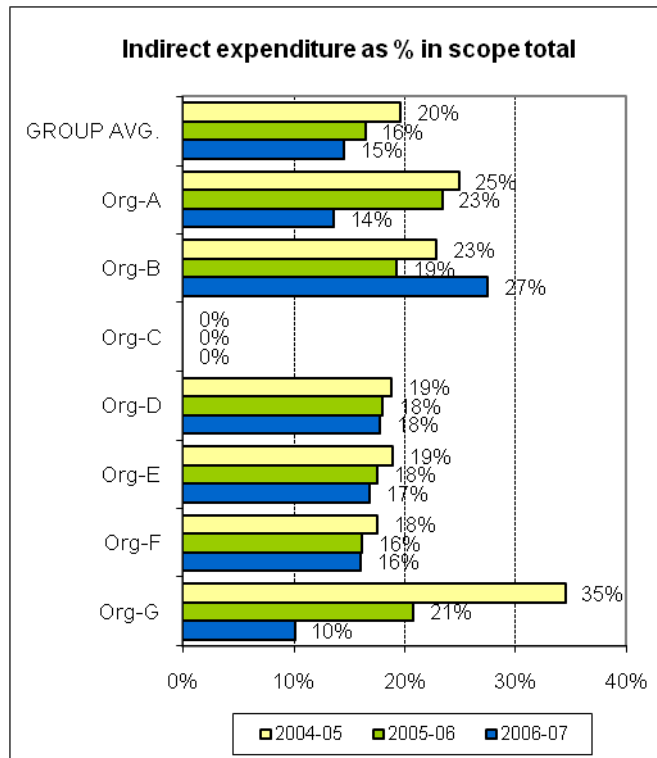


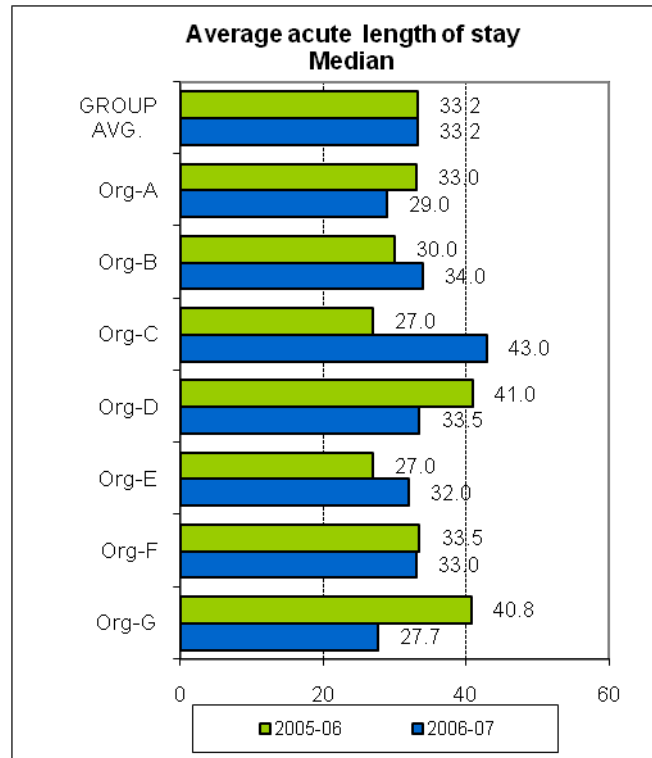
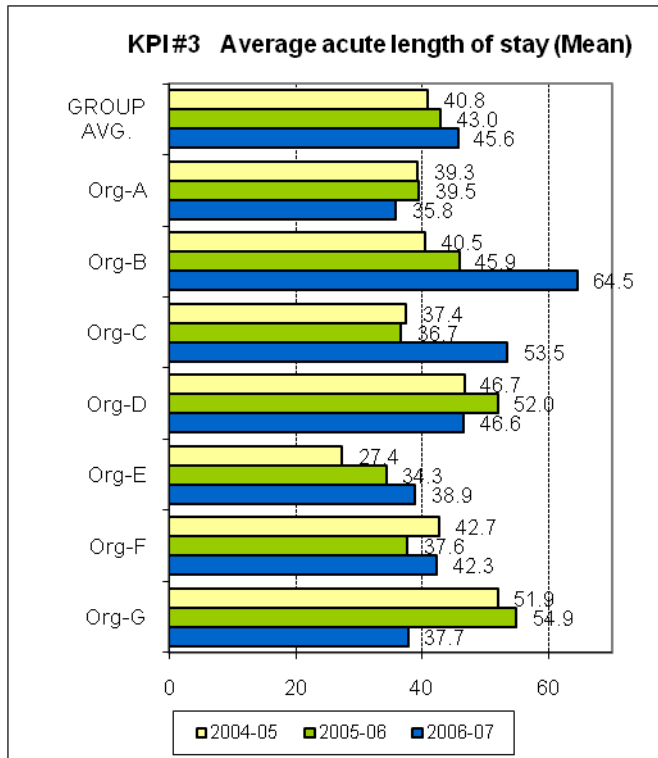
**Ambulatory Direct Care FTE per
100,000 population**





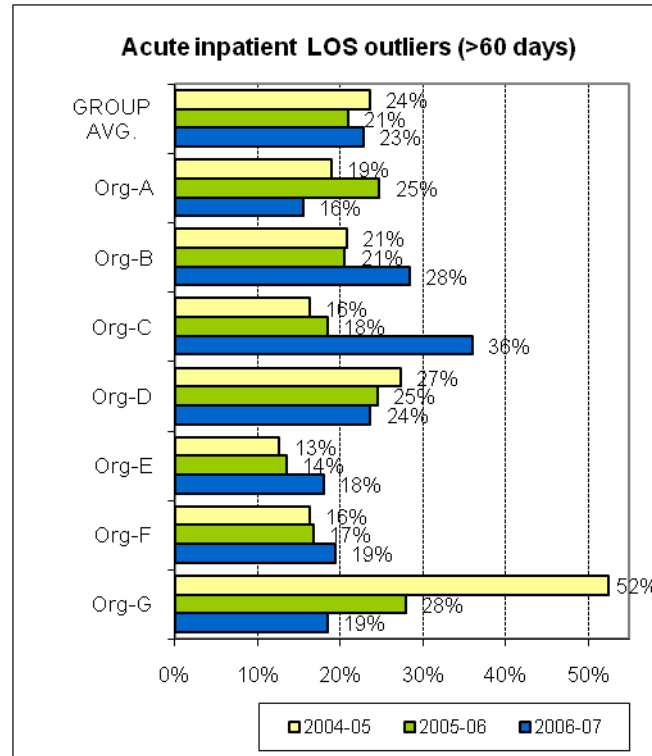
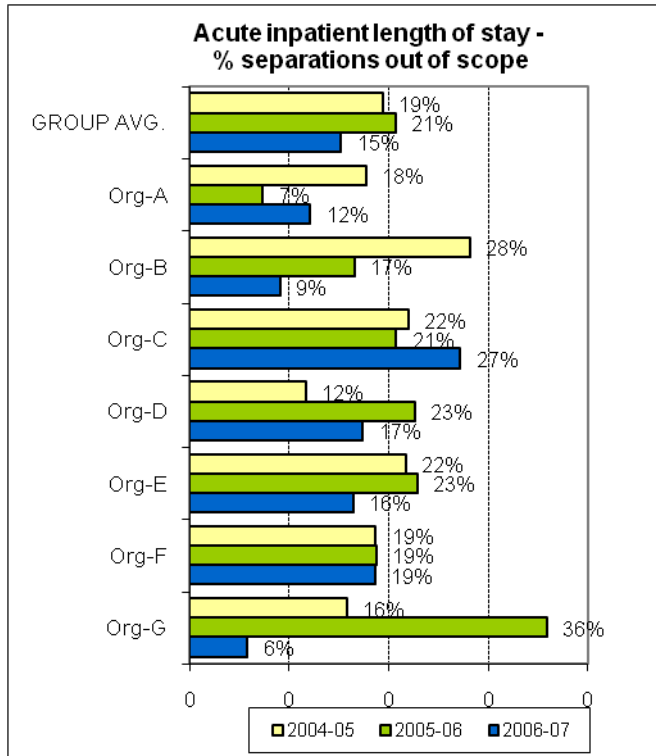
THEME 2: EFFICIENCY IN USE OF RESOURCES

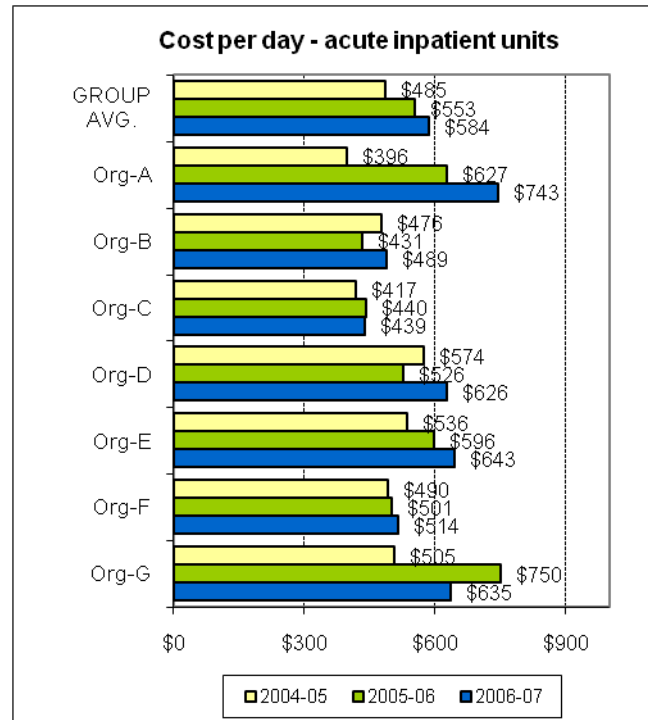
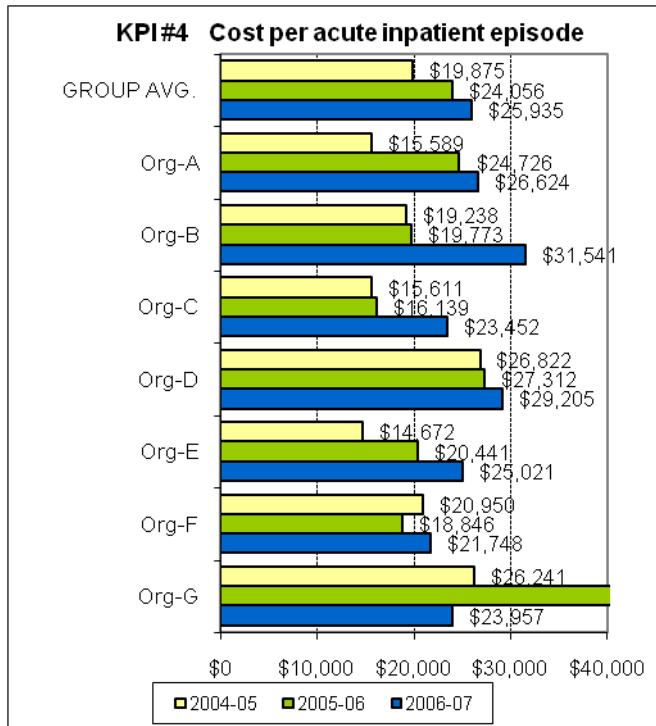


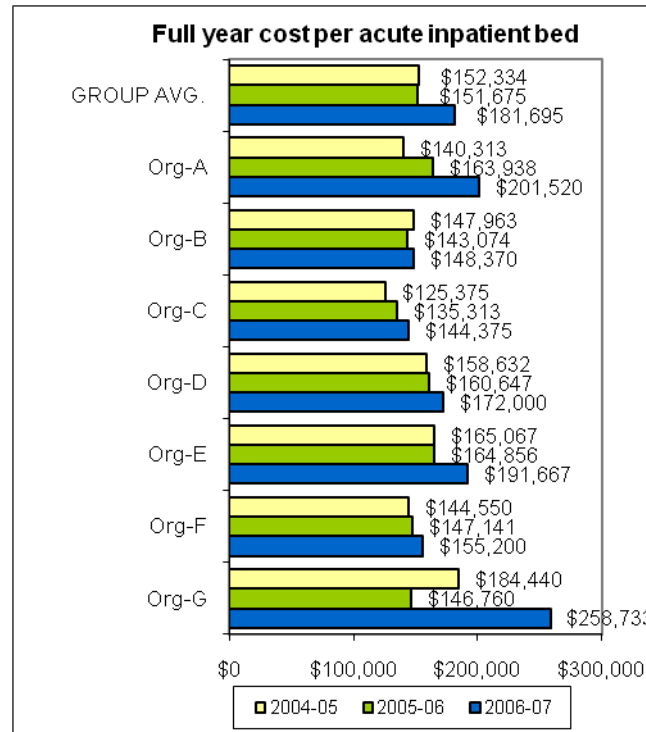
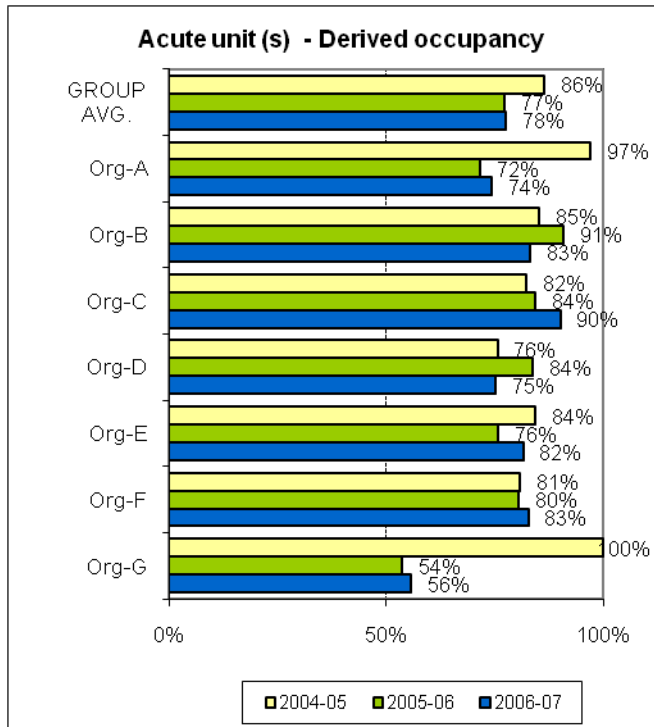


AMHOCN

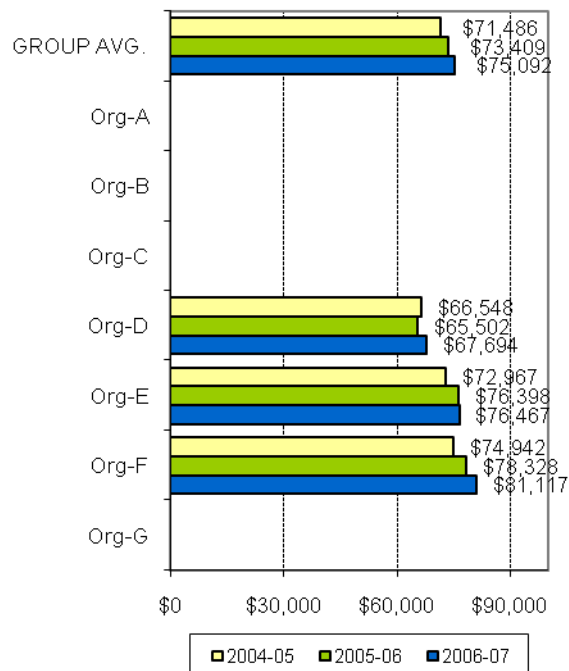
"Sharing Information to
Improve Outcomes"



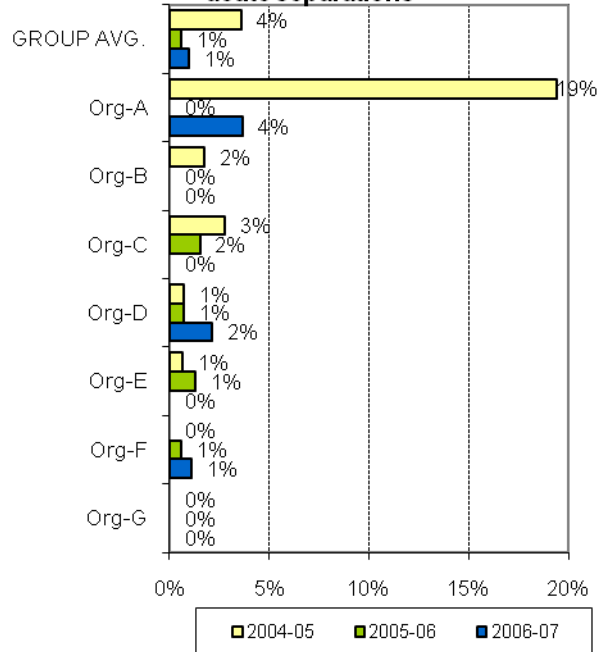


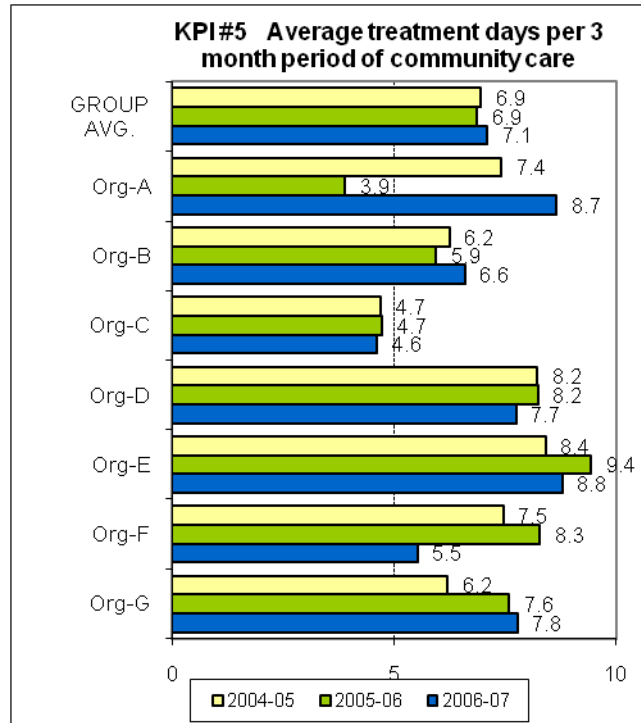
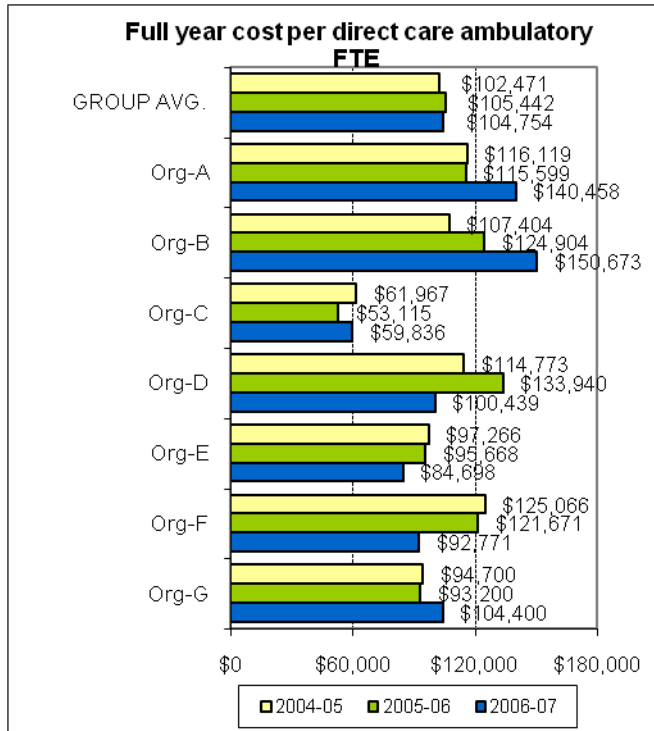


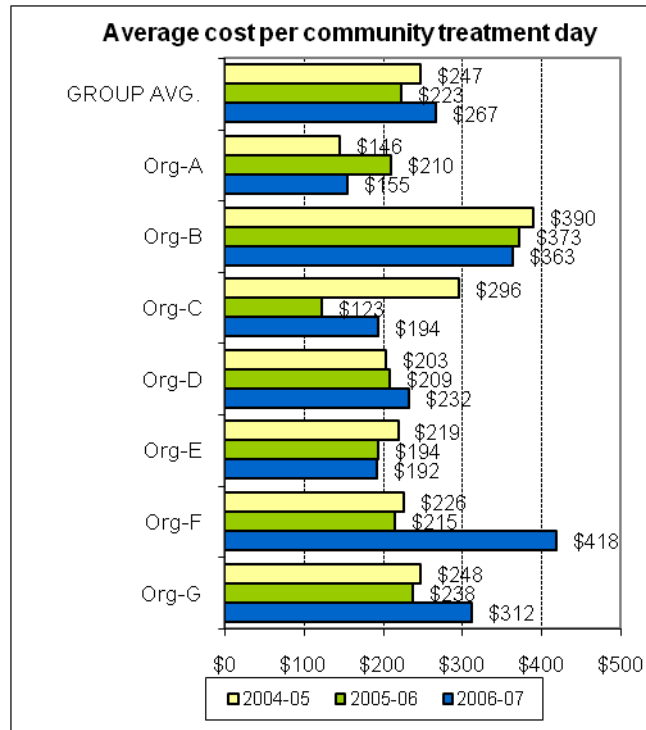
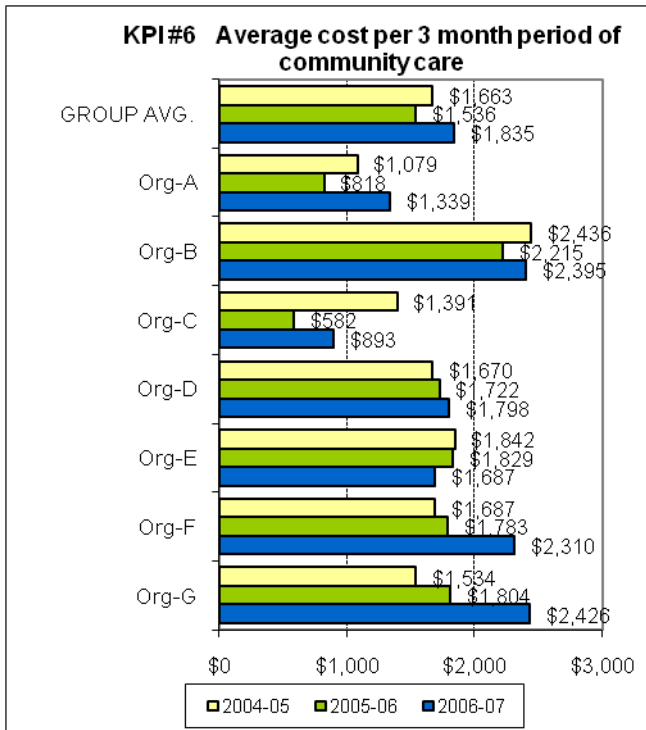
Av. Annual cost per residential bed



Same day separations as percent of total acute separations

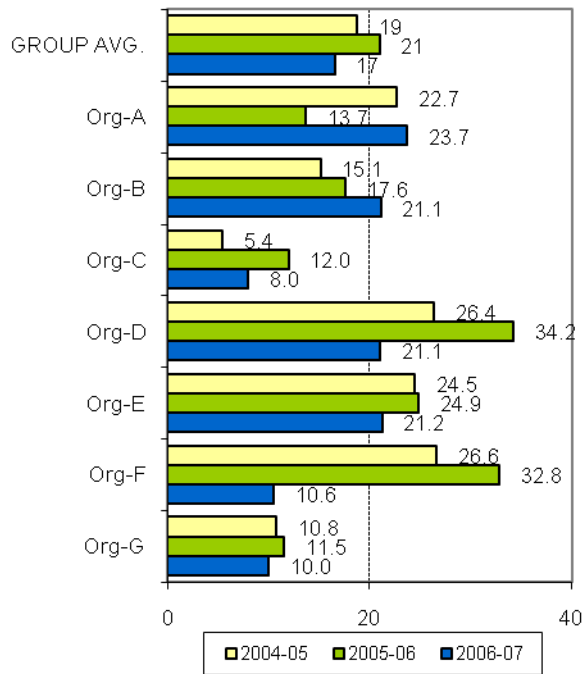




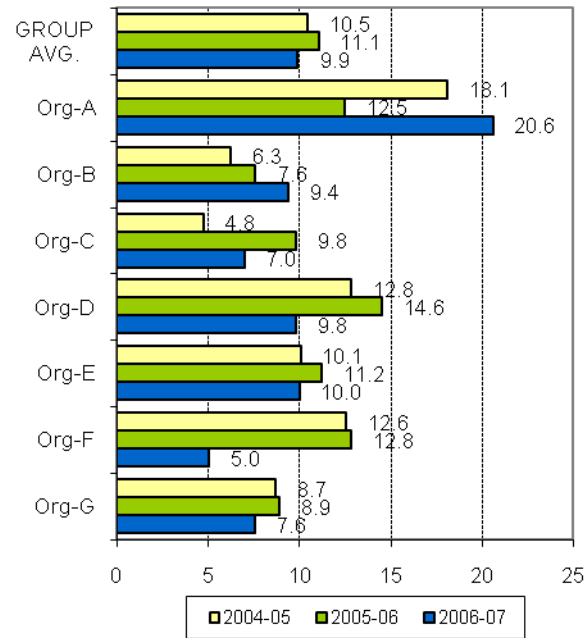


THEME 3: PRODUCTIVITY AND ACTIVITY OF AMBULATORY SERVICES

Av. weekly contacts per direct care FTE

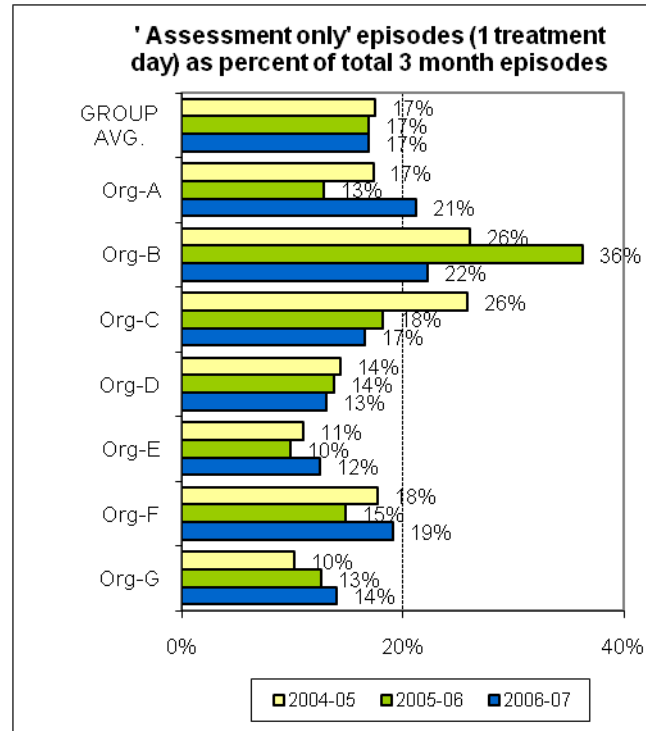
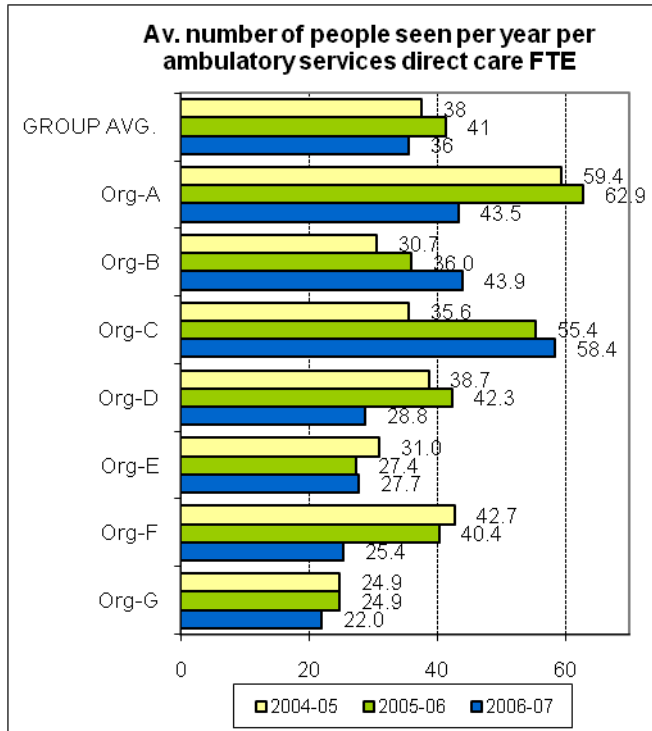


Av. weekly treatment days per direct care FTE (approx = N patients per week per FTE)

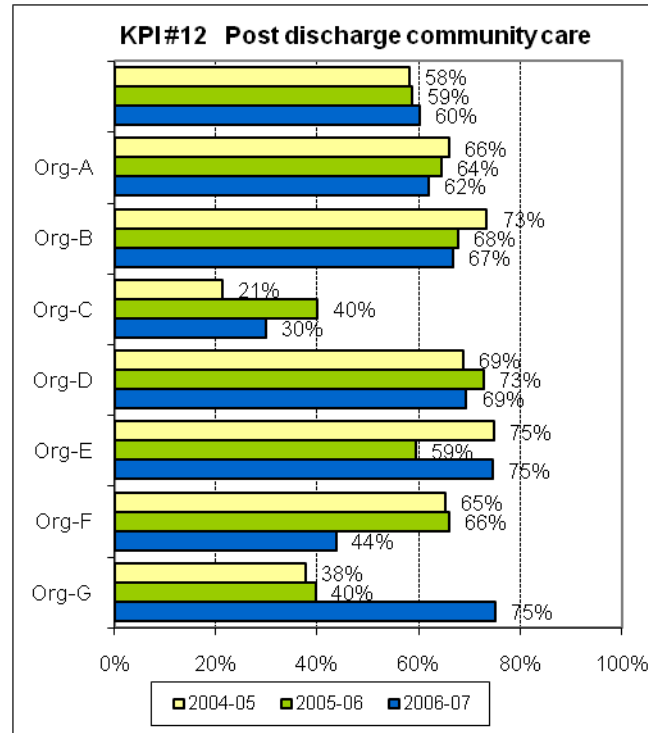
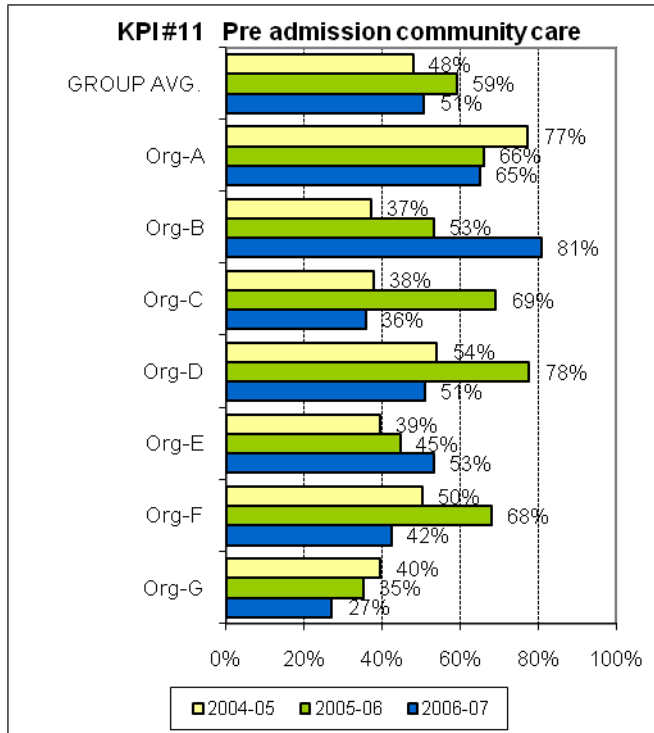


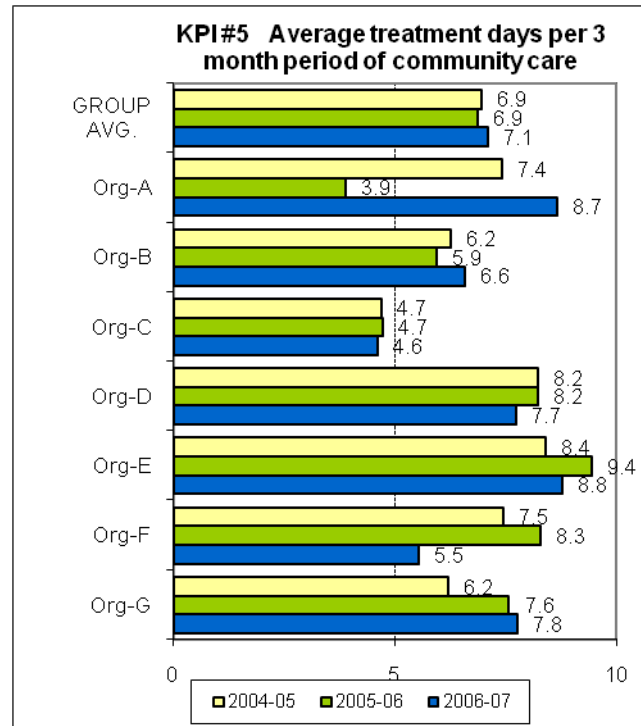
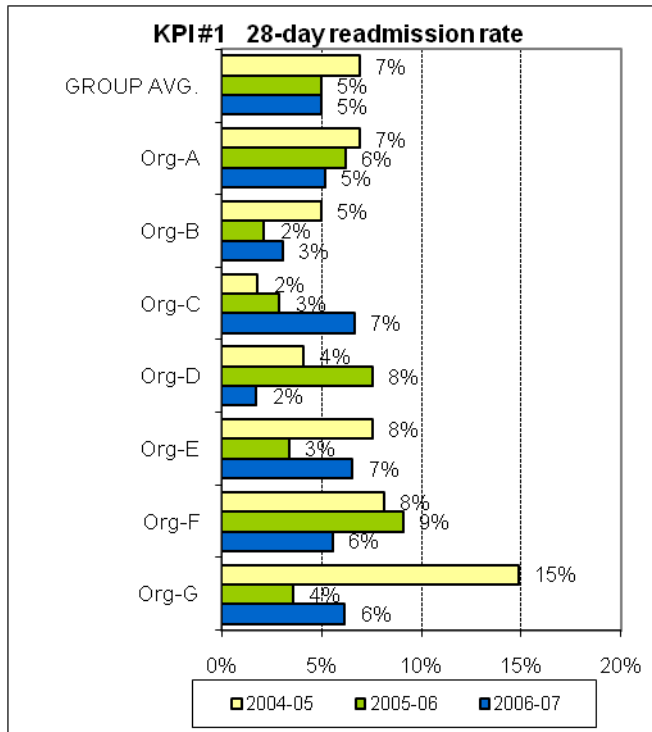
AMHOCN

"Sharing Information to
Improve Outcomes"

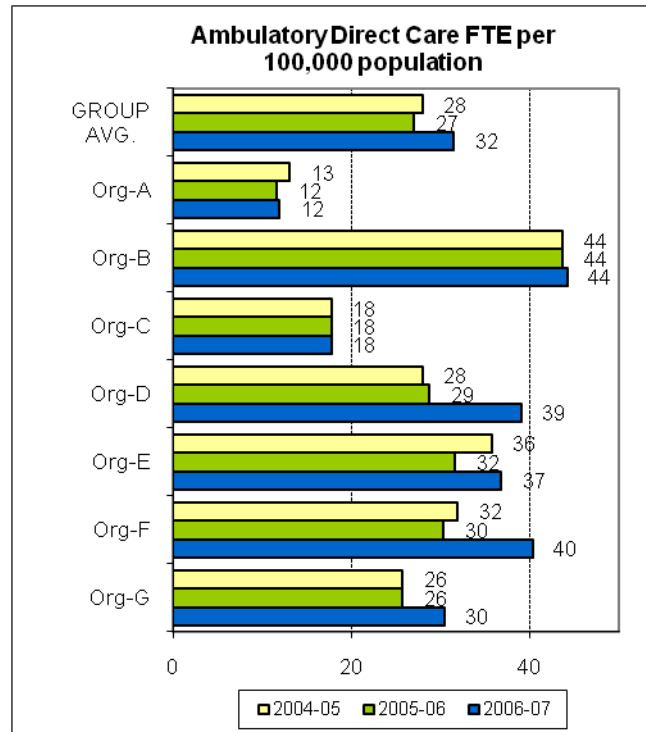
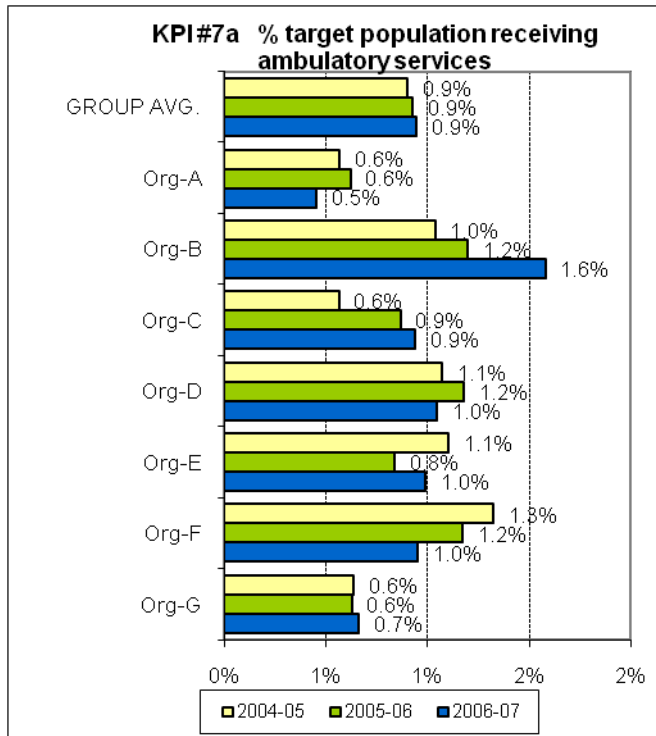


THEME 4: CONTINUITY OF CARE

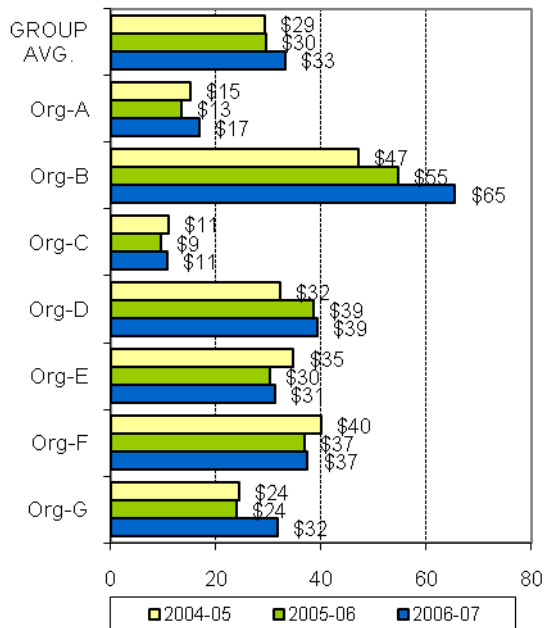




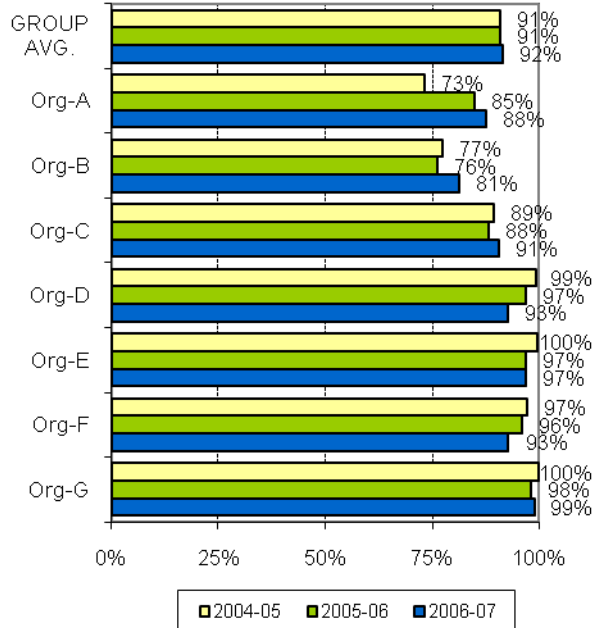
THEME 5: ACCESS TO AMBULATORY CARE



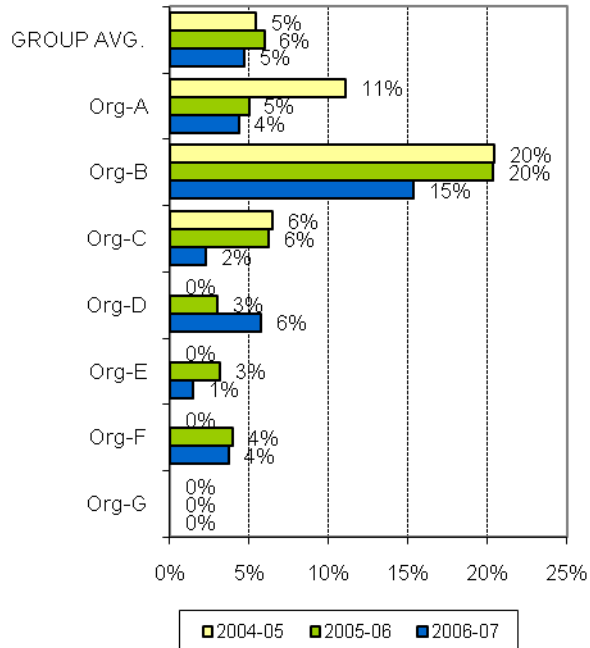
KPI#10a Area per capita resources - Ambulatory services (Expenditure)



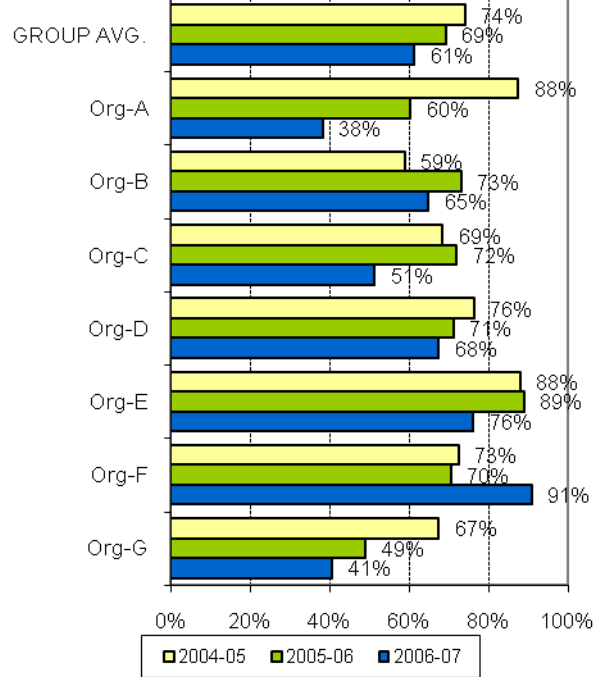
Age-specific target group as % of total people seen by ambulatory services



Percent of people seen by ambulatory services who reside external to catchment



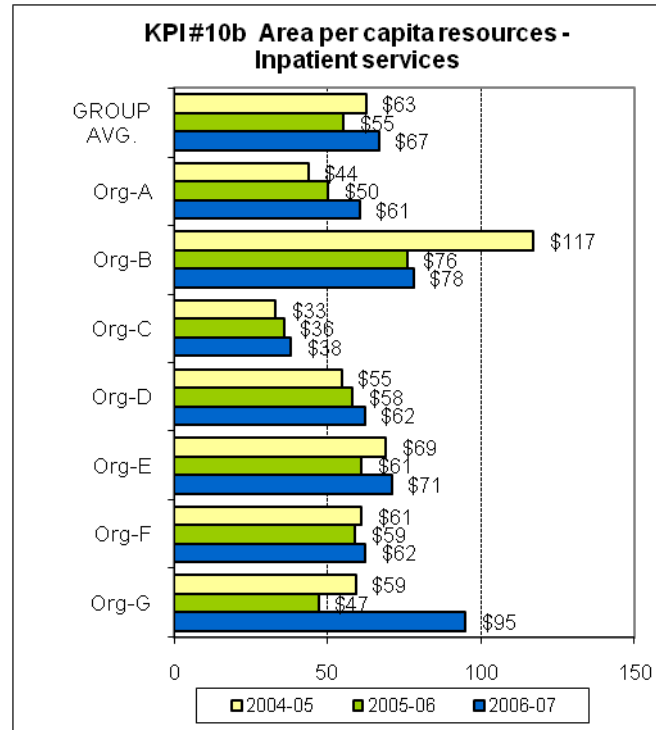
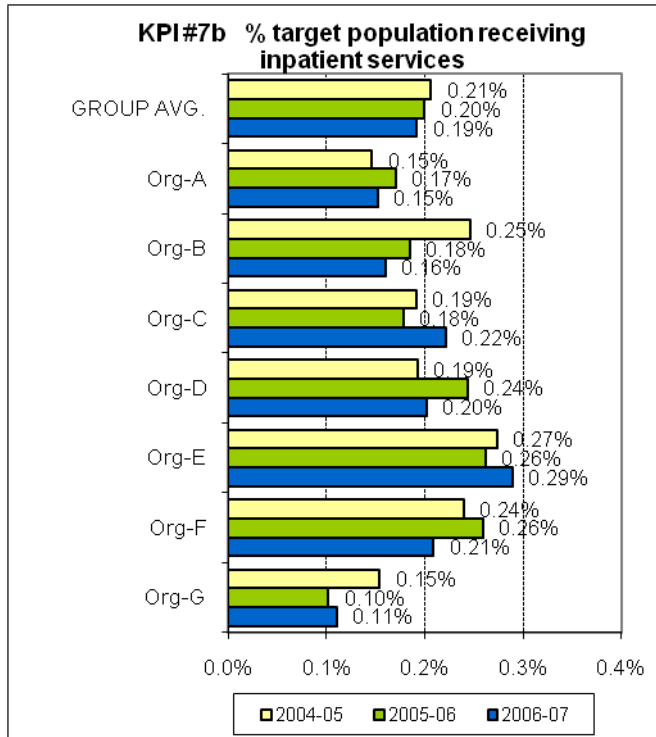
KPI#9 New client index

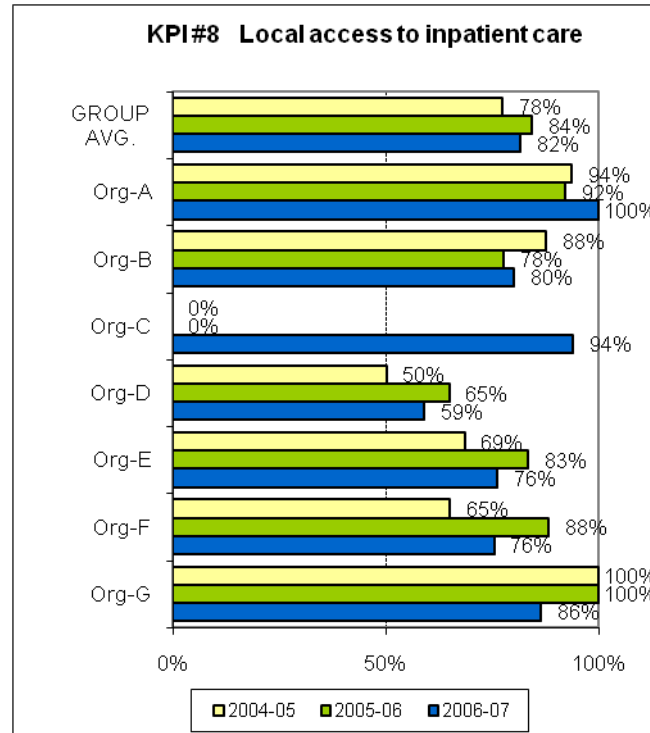
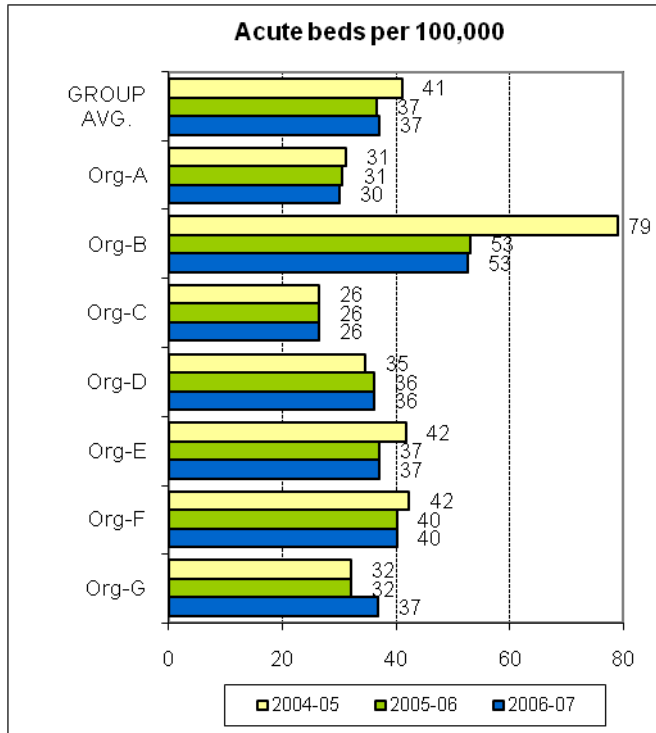


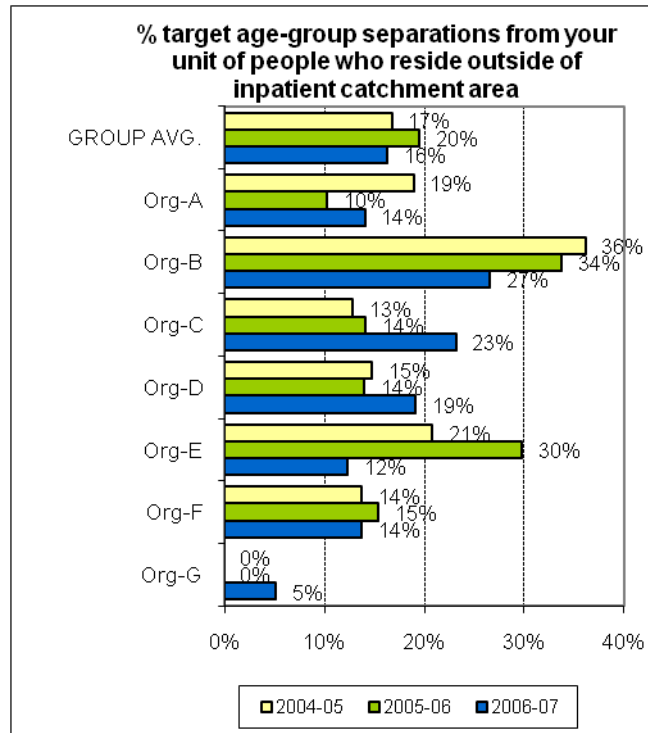
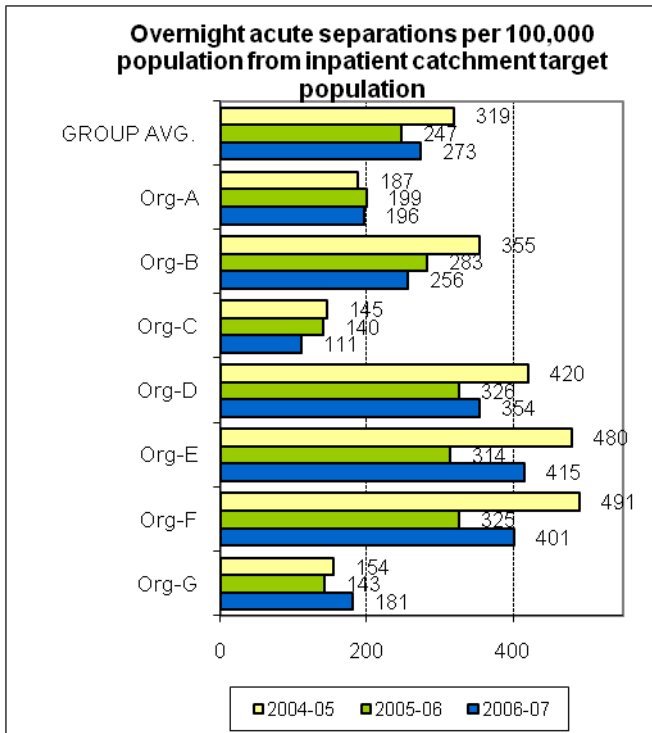
AMHOCN

"Sharing Information to
Improve Outcomes"

THEME 6: ACCESS TO ACUTE INPATIENT CARE

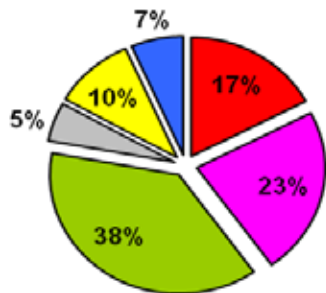




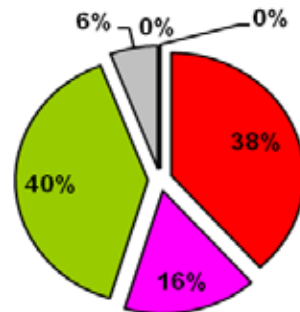


**THEME 7: ACUTE INPATIENT
CASEMIX- (A) DIAGNOSIS 2006-07**

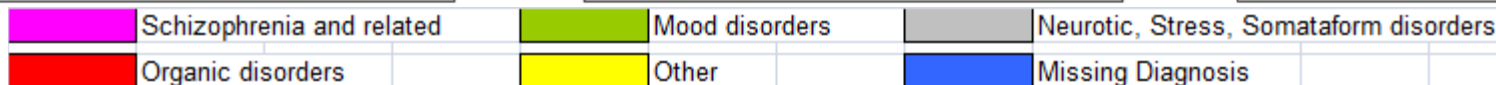
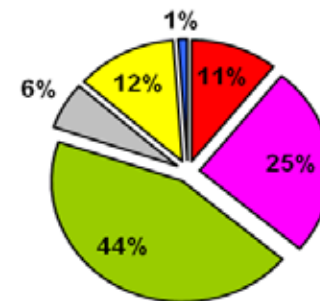
GROUP AVERAGE



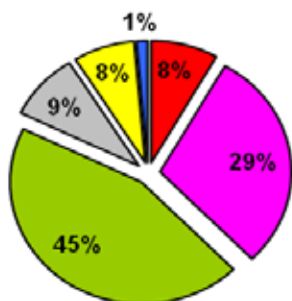
Org-G



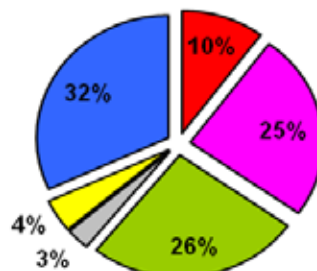
Org-F



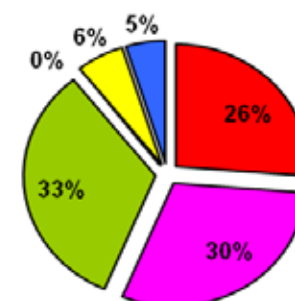
Org-E



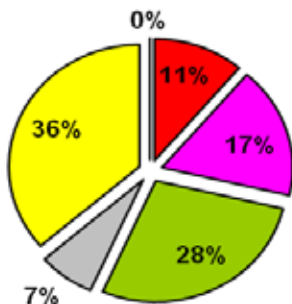
Org-D



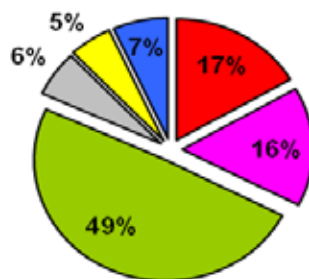
Org-C



Org-B



Org-A



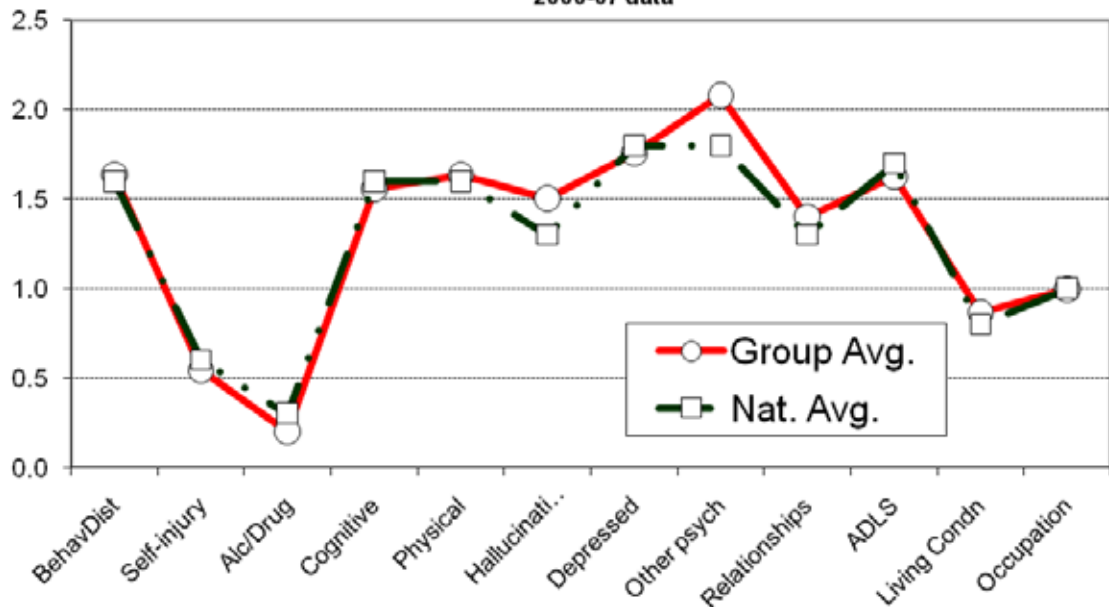
"Sharing Information to
improve Outcomes"

Percentage overnight separations with Diagnosis data:

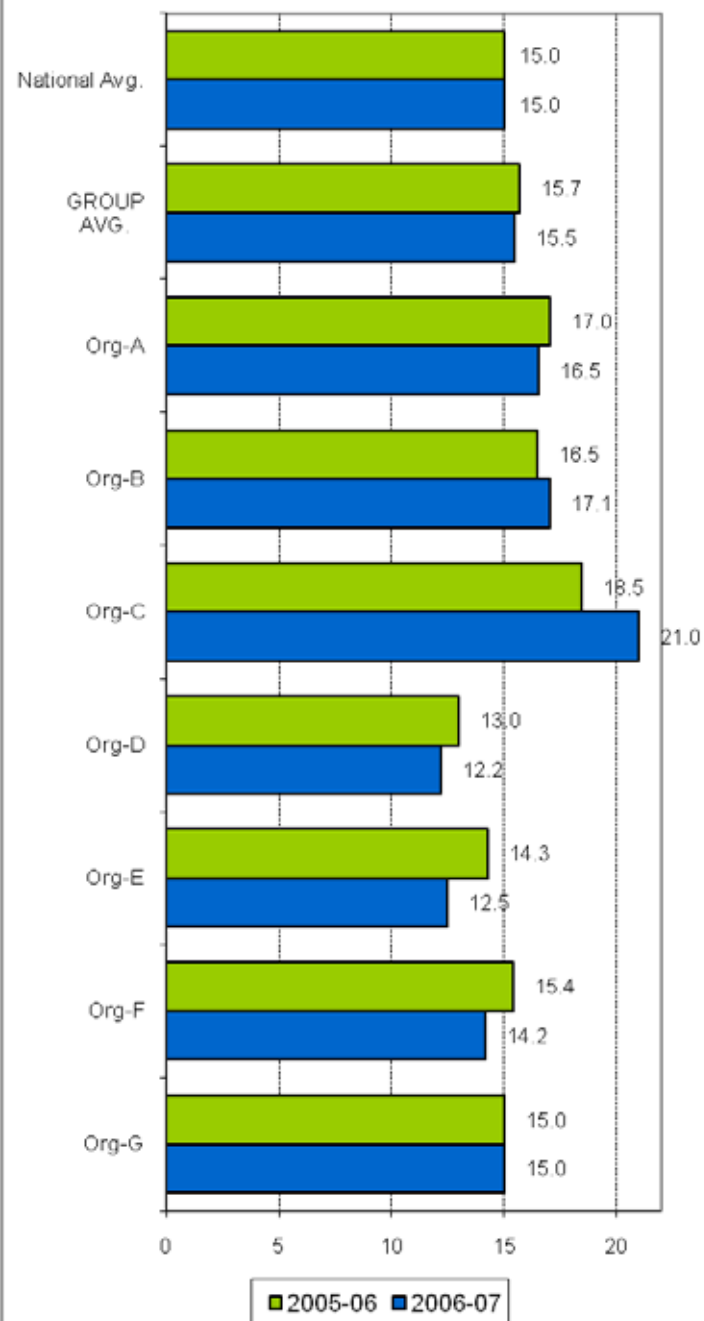
Group average	100%	Org-A	100%	Org-B	100%	Org-C	100%	Org-D	100%
		Org-E	100%	Org-F	100%	Org-G	100%		

**THEME 7: ACUTE INPATIENT
CASEMIX - (B) HONOS65+ AT
ADMISSION**

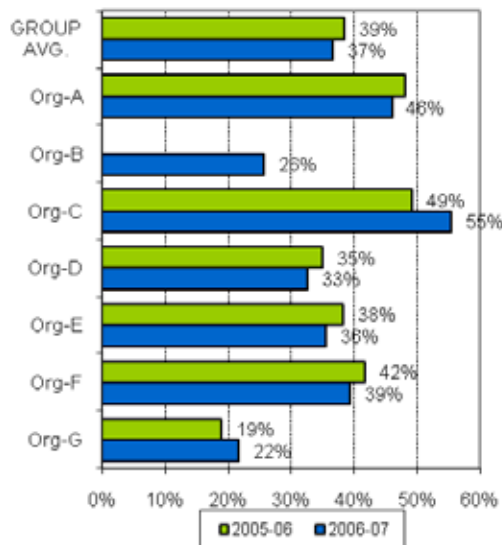
**Average HoNOS scores by item - Group vs National Avg.
2006-07 data**



**Av. HoNOS65+ total scores at admission
2 year trends**



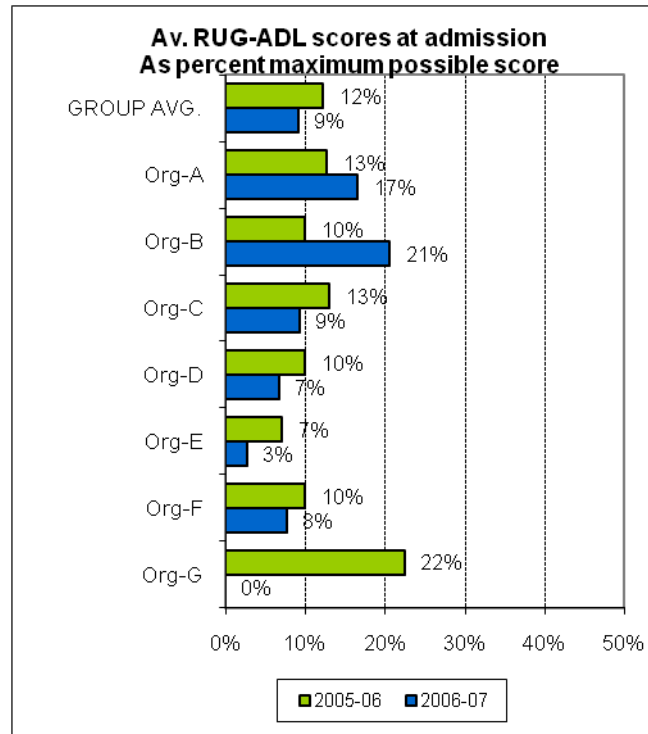
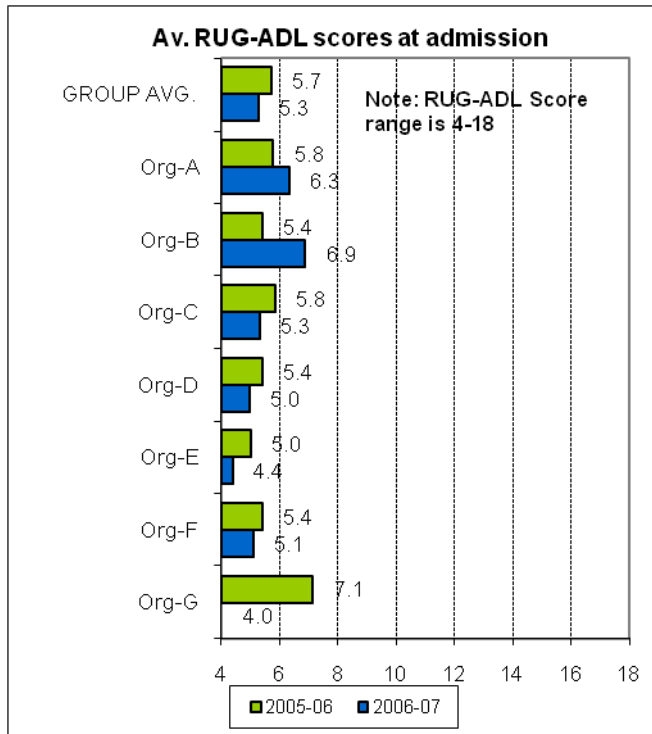
HoNOS65+ individual item scores at admission - % clinically significant (> 2)



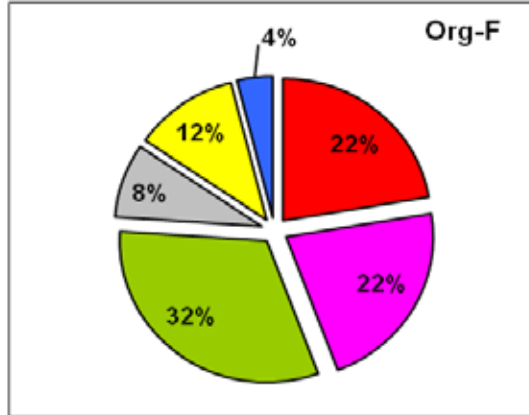
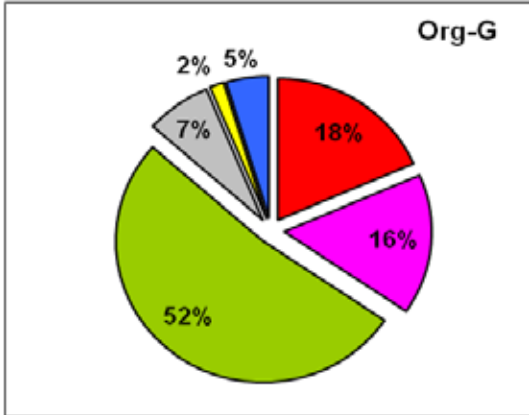
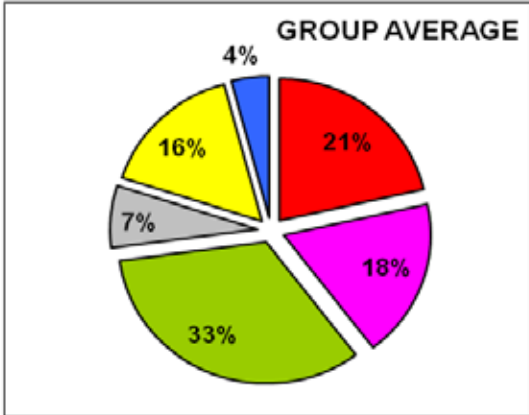
Percentage overnight separations with HoNOS65+ Admission, 2006-07 data:

Group average	83%	Org-A	93%	Org-B	97%	Org-C	84%	Org-D	70%
		Org-E	83%	Org-F	53%	Org-G	100%		

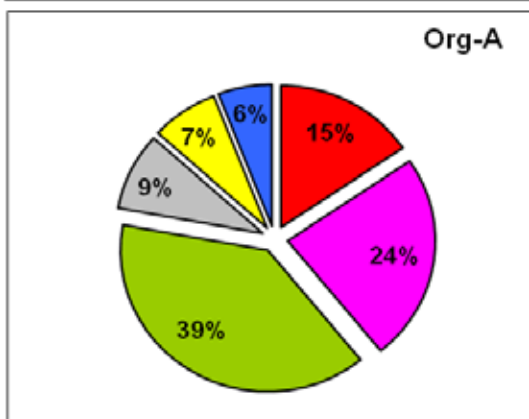
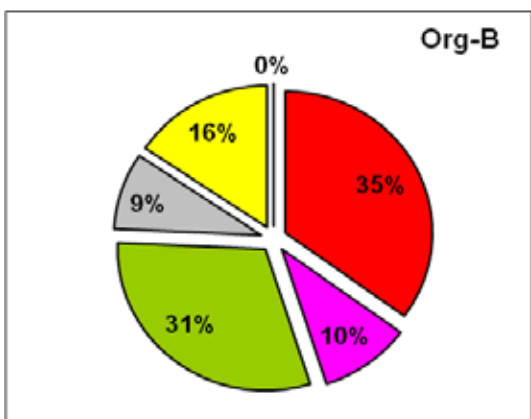
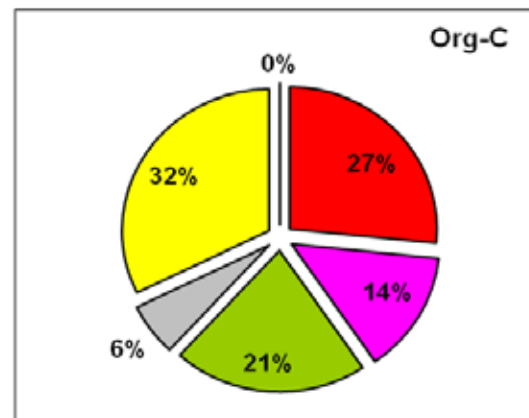
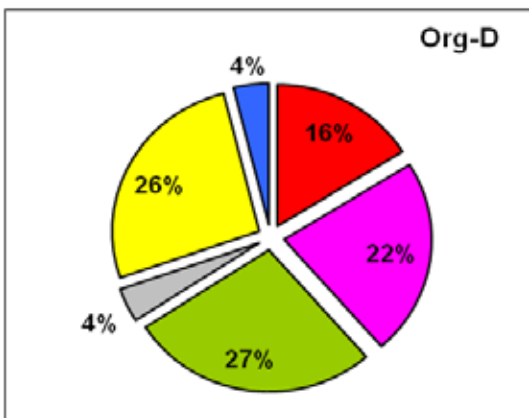
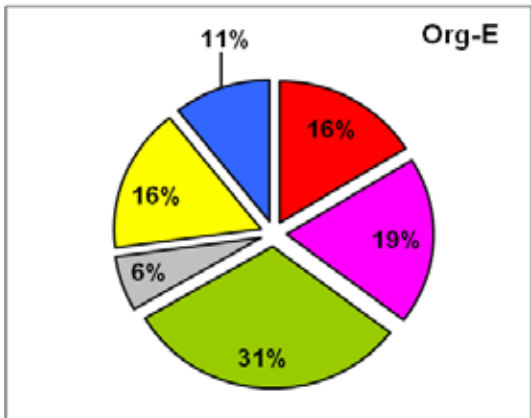
**THEME 7: ACUTE INPATIENT
CASEMIX - (C) RUG-ADL AT
ADMISSION**



**THEME 8: AMBULATORY CARE
CASEMIX- (A) DIAGNOSIS, 2006-07**



	Schizophrenia and related		Mood disorders		Neurotic, Stress, Somataform disorders
	Organic disorders		Other		Missing Diagnosis



AMHOCN

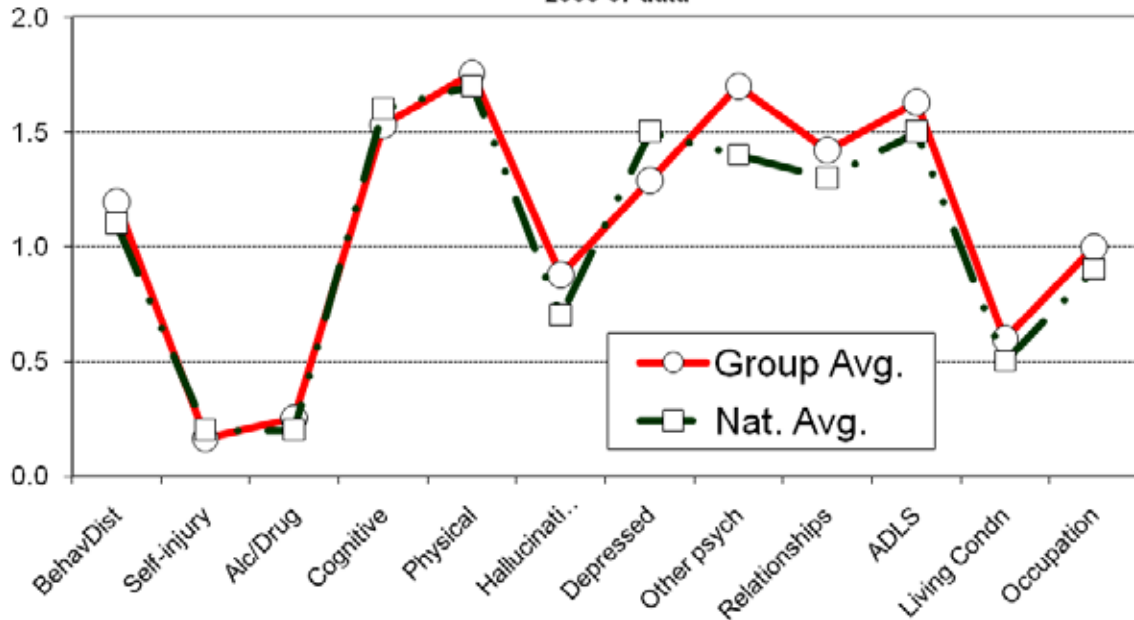
"Sharing Information to Improve Outcomes"

Percentage total persons seen in community with Diagnosis data:

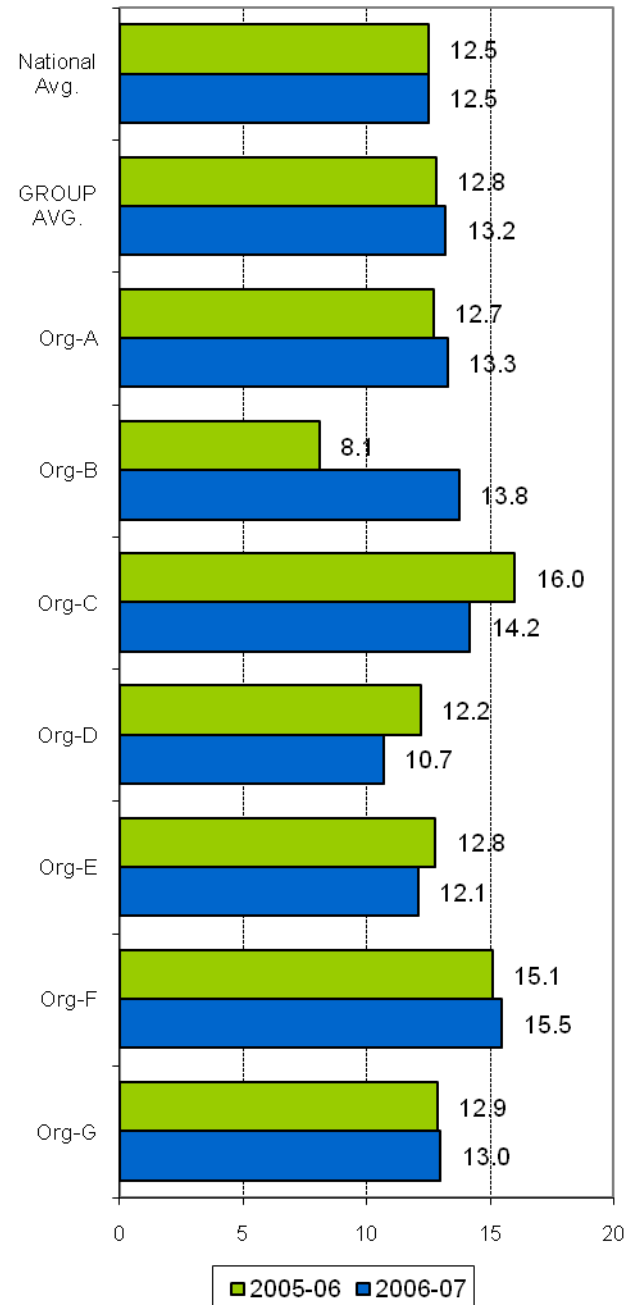
Group average	92%	Yellow	98%	Magenta	100%	Black	75%	Orange	101%
		Purple	100%	ElecBlue	100%	Ruby	73%		

**THEME 8: AMBULATORY CARE
CASEMIX- (B) HONOS65+**

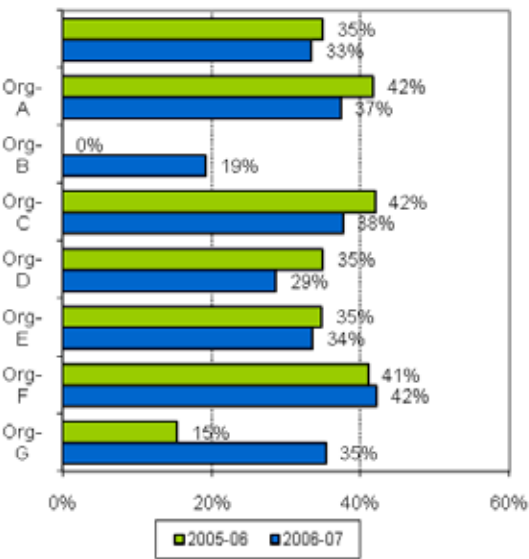
**Average HoNOS65 scores by item - Group vs National Avg.
2006-07 data**



**Av. HoNOS65+ total scores
2 year trends**



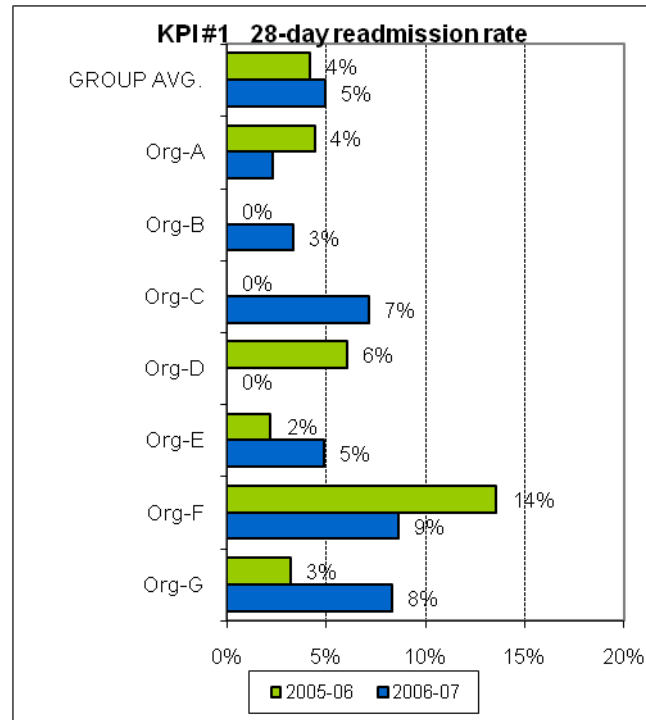
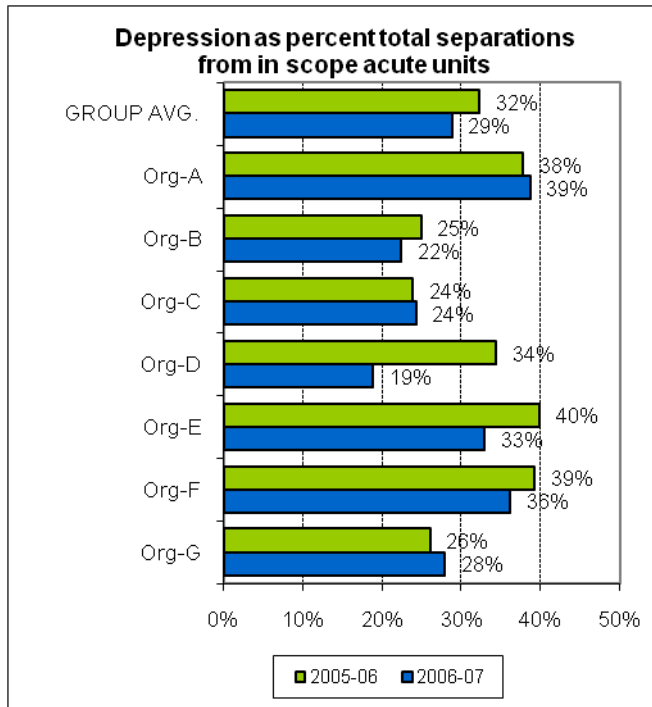
**HoNOS65+ Individual Item scores
% clinically significant (> 2)**



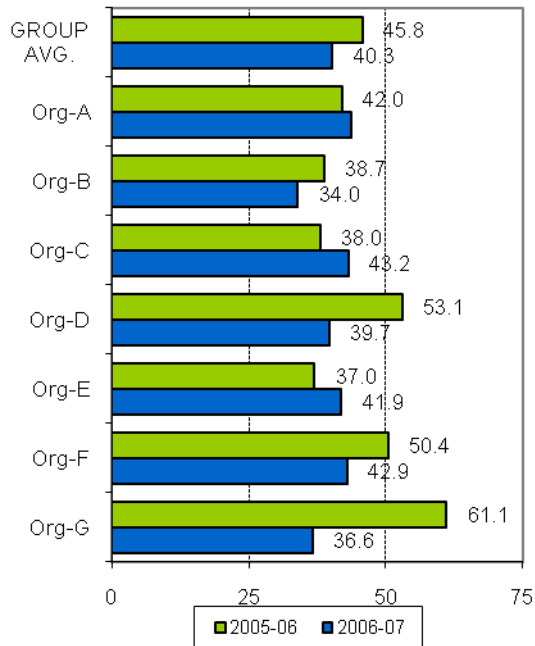
Percentage total persons seen in community included in HoNOS65+ data:

Group average	54%	Org-A	54%	Org-B	24%	Org-C	57%	Org-D	31%
		Org-E	65%	Org-F	49%	Org-G	100%		

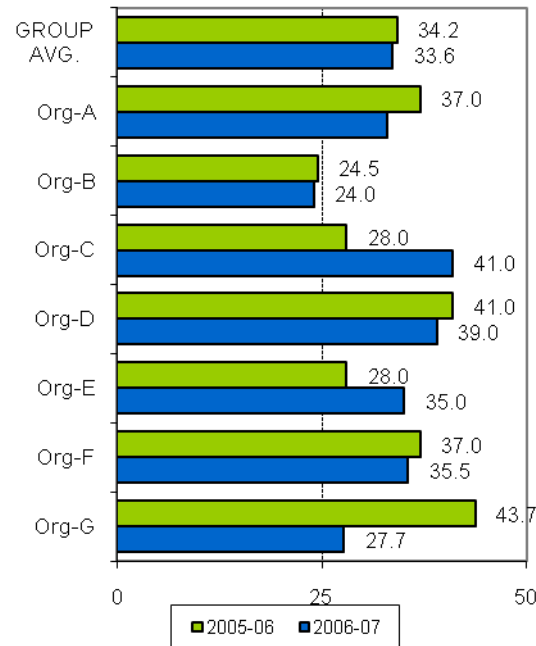
THEME 9: DEPRESSION - ACUTE INPATIENT SEPARATIONS



KPI#3 Acute inpatient length of stay

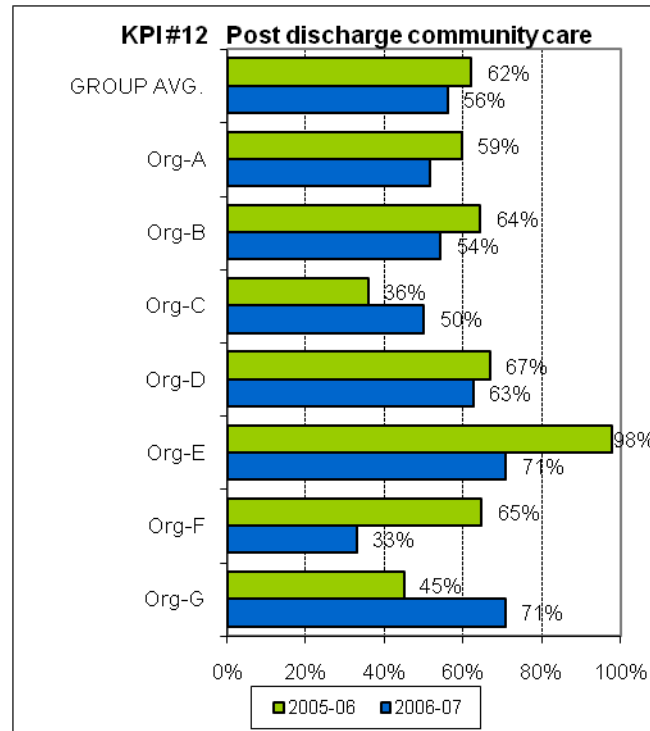
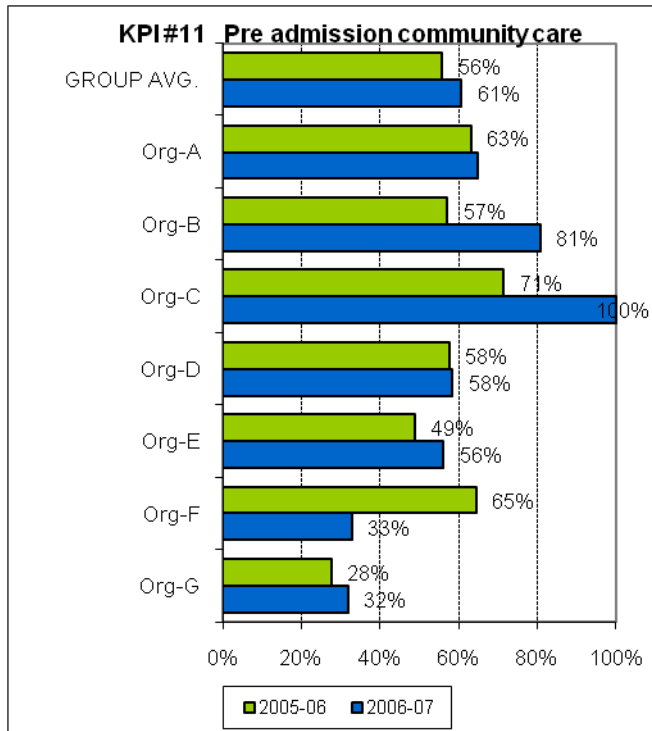


Median length of stay



AMHOCN

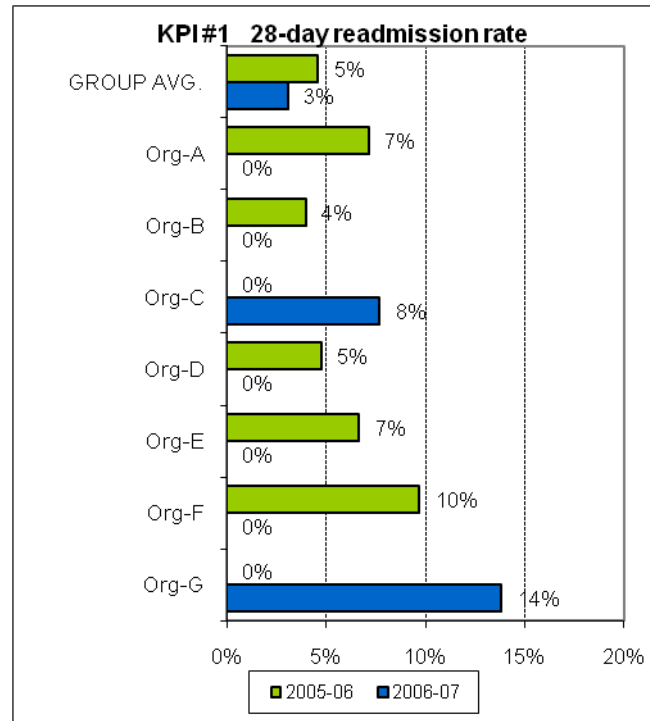
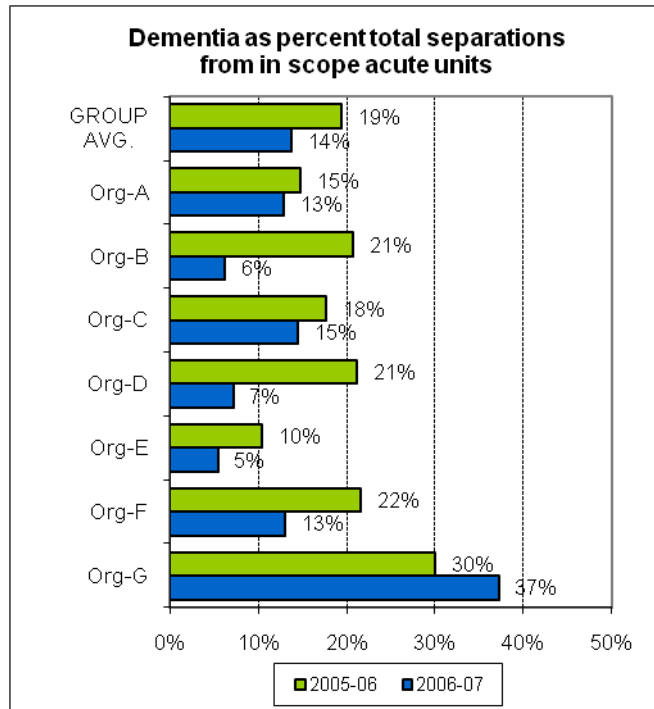
"Sharing Information to
Improve Outcomes"

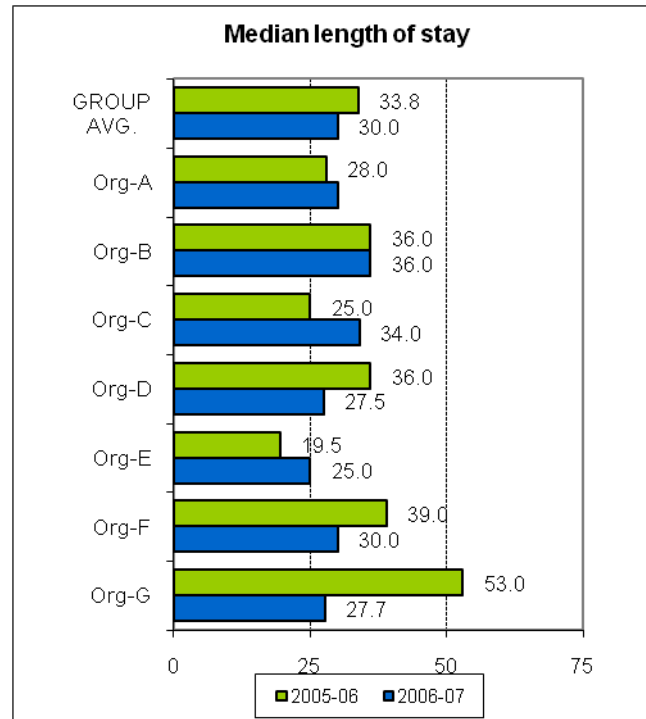
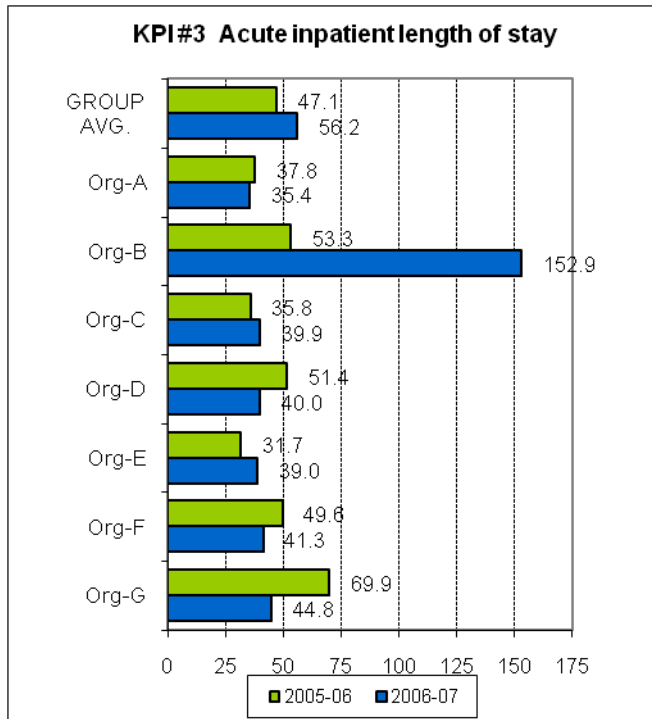


AMHOCN

"Sharing Information to
Improve Outcomes"

THEME 10: DEMENTIA - ACUTE INPATIENT SEPARATIONS





AMHOCN

"Sharing Information to
Improve Outcomes"

