

National Mental Health Benchmarking Project

An Australian Government funded initiative



COMPARATIVE INDICATORS

3-year time series 2004-05 to 2006-07

Older Persons Mental Health Services Forum

Version 1.0 Summary for Public Release

Australian Mental Health Outcomes and Classification Network
November 2008

This document was prepared from a more detailed version developed for restricted use by organisations participating in the National Mental Health Benchmarking Project. By agreement of all organisations, this version of the indicators has been prepared for wider use and unrestricted distribution. All identifying details and source data tables have been removed from this version.



AMHOCN

"Sharing Information to
Improve Outcomes"

What this package contains

This document is organised into three parts.

PART A - Summary table and charts of the 13 national KPIs (Pages 4 - 10)

This part presents the national KPIs for each of the organisations in tabular and graphical format.

All KPIs are derived from three years of data (2004-05, 2005-06 and 2006-07) submitted by each organisation and constructed according to the specifications and definitions described in National Mental Health Benchmarking Project Manual.

PART B - Selected indicators grouped by themes (Pages 11 - 34)

This part groups the national KPIs, plus a number of supplementary indicators, into 10 themes.

1. Comparative resources available to the organisation
2. Efficiency in use of resources
3. Productivity and activity of ambulatory services
4. Continuity of care
5. Access to ambulatory care
6. Access to acute inpatient care
7. Acute Inpatient casemix - (a) Diagnosis (b) HoNOS at admission (c) RUG-ADL at admission
8. Ambulatory care casemix - (a) Diagnosis and (b) HoNOS
9. Depression - Acute Inpatient separations
10. Dementia - Acute Inpatient separations

The themes were selected only on the basis of what is feasible from the available data. They were not intended to restrict participating organisations to the eight categories, nor pre-empt where organisations focused their benchmarking effort.

All supplementary indicators are derived from source data submitted by organisations in their KPI workbooks. These details are not included in this public release version of the document. Details on how the supplementary indicators are constructed are however provided at the end of this Part of the document (pages 27-34).

PART C - Source data tables

Omitted from this public release version.

Version History

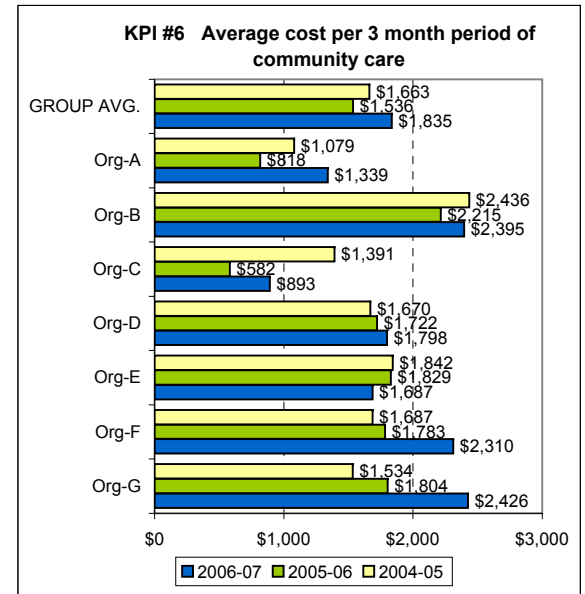
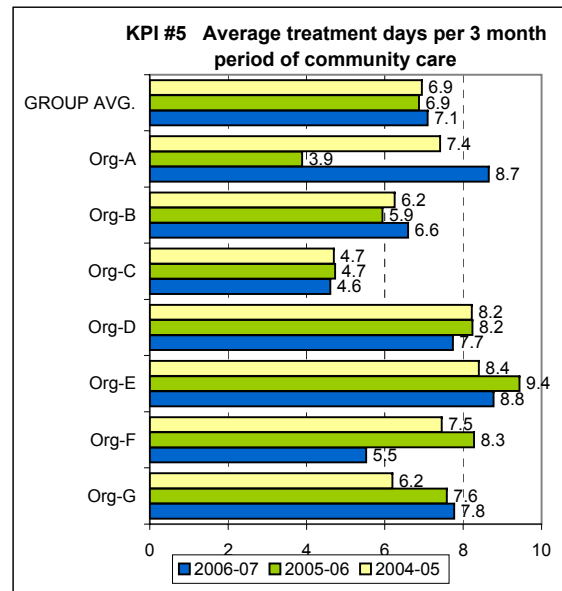
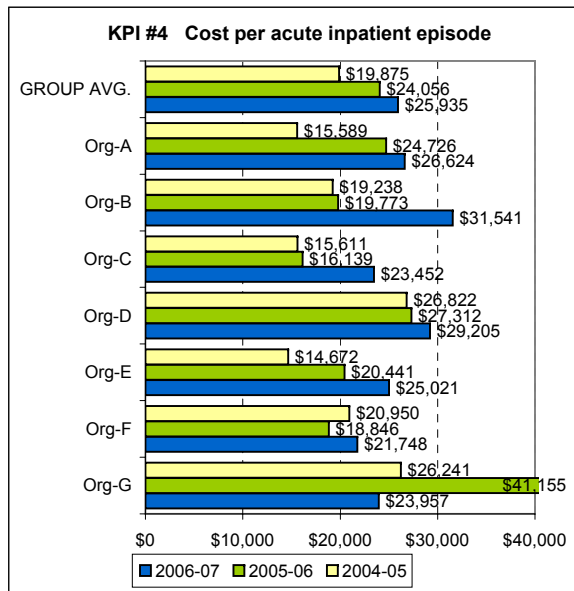
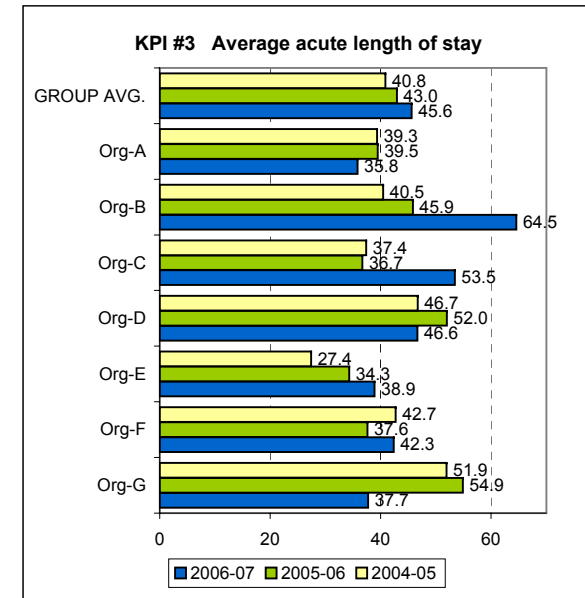
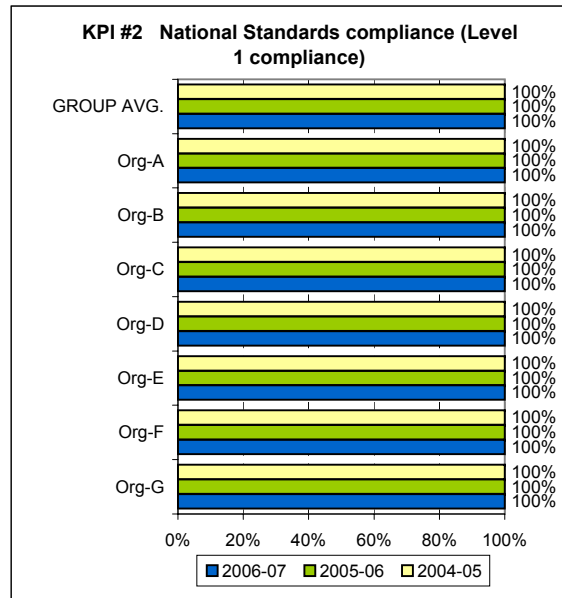
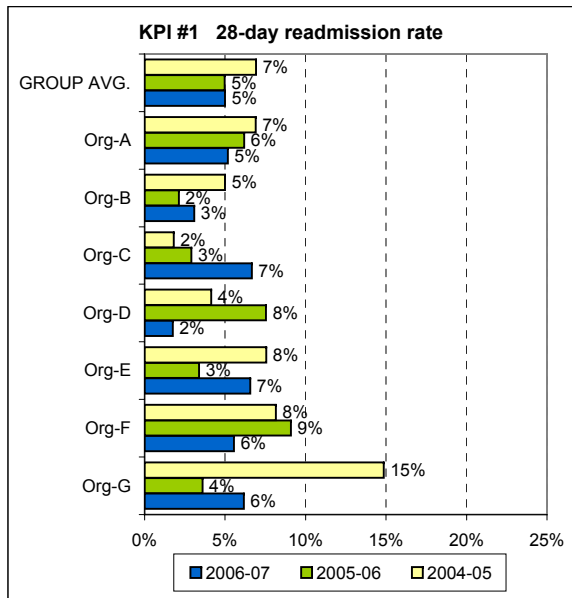
Version history

Version	Preparation date	Details
01	13-Nov-08	First public release version, using final validated data as signed off by participating organisations.

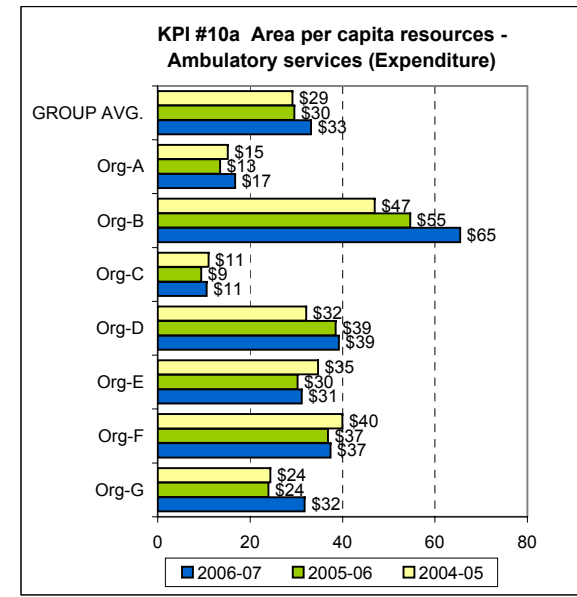
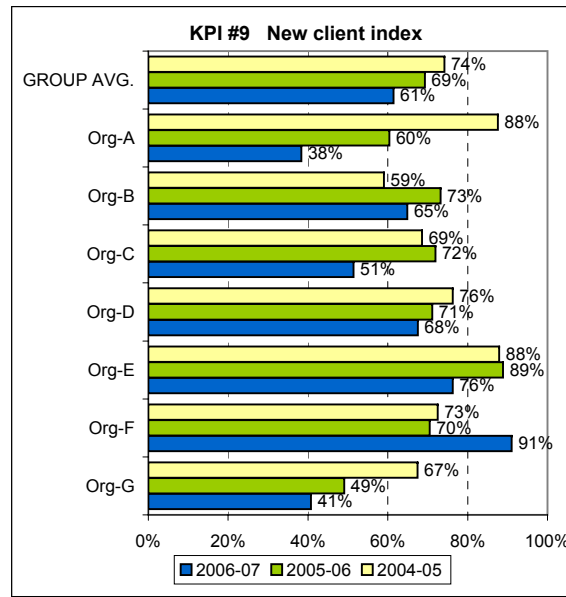
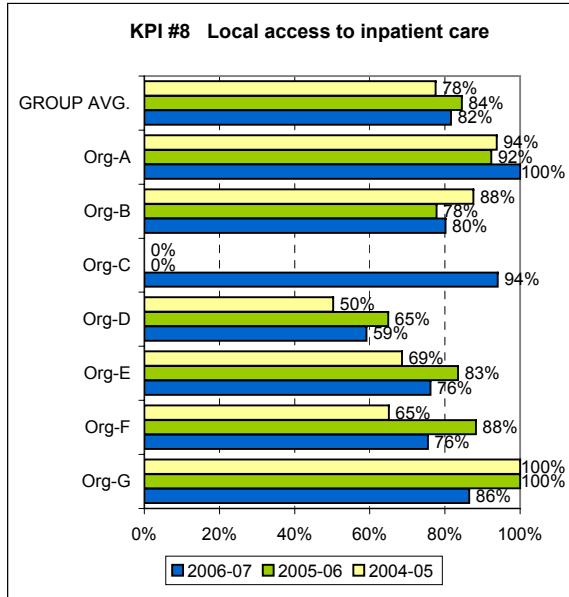
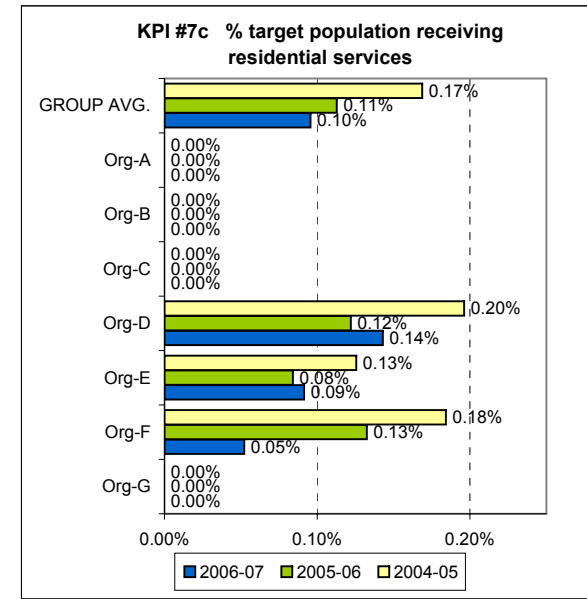
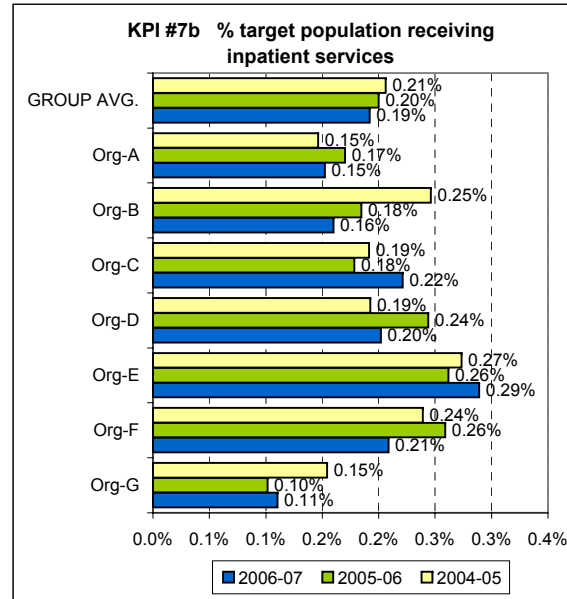
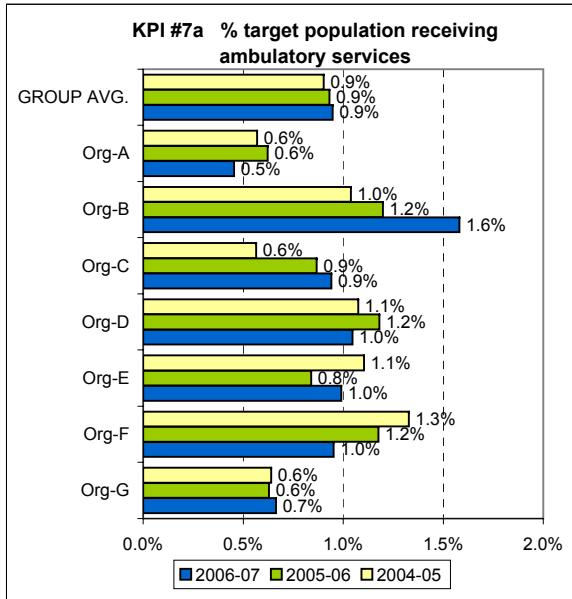
PART A

Summary table and charts of the 13 national KPIs

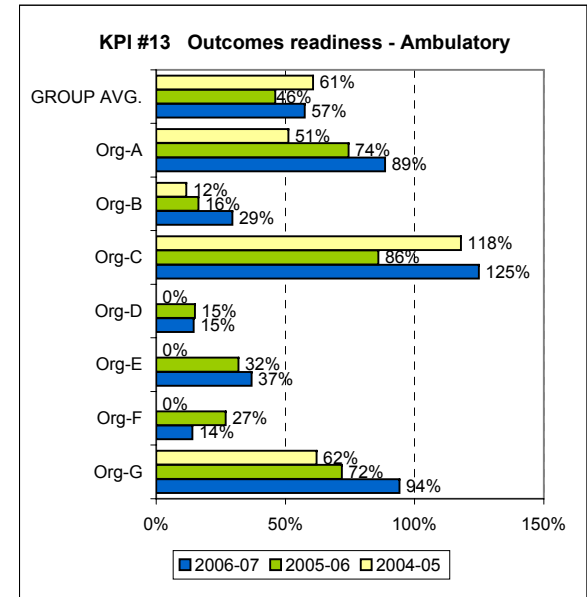
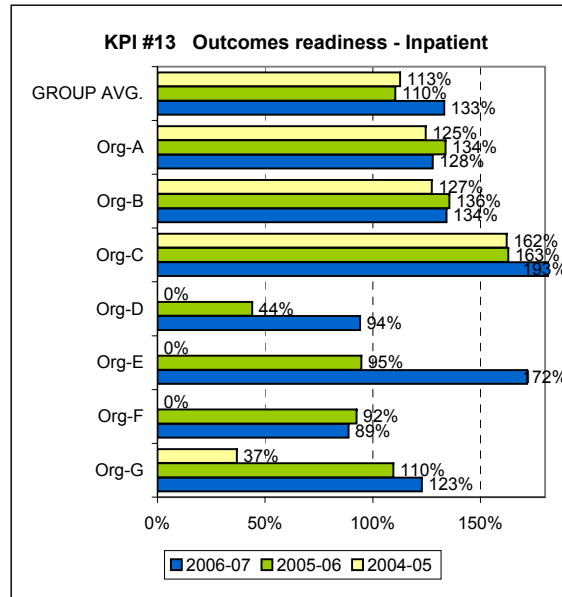
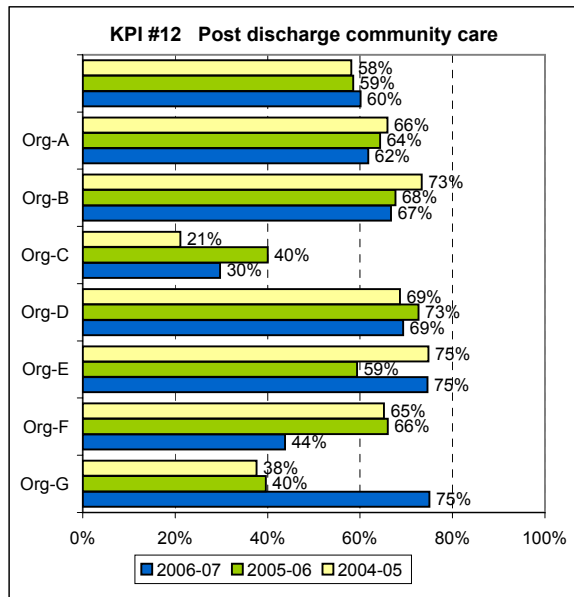
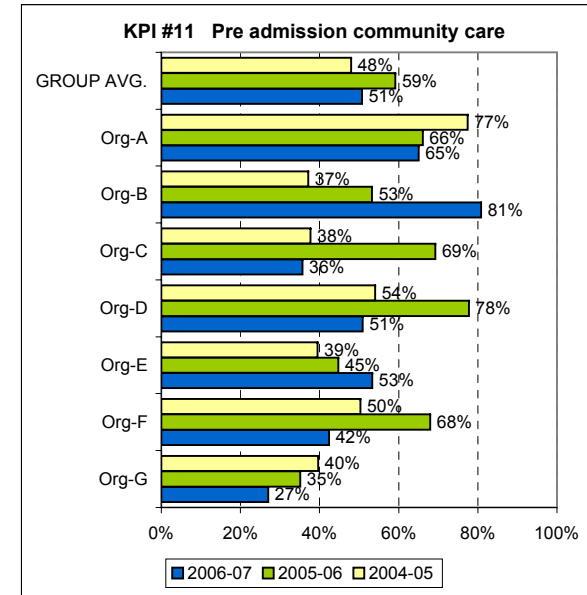
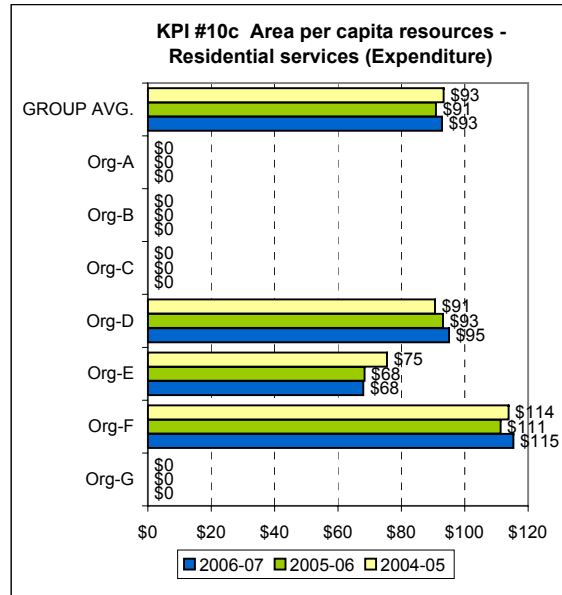
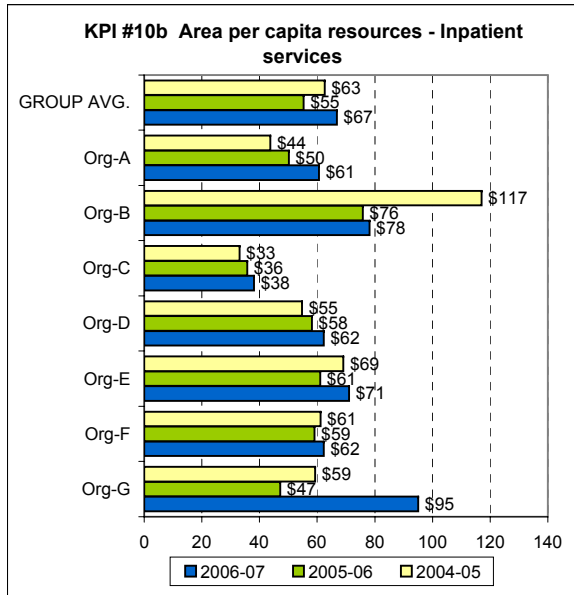
The 13 NATIONAL KPIs IN NUMERICAL ORDER - Three year trends



The 13 NATIONAL KPIs IN NUMERICAL ORDER - Three year trends



The 13 NATIONAL KPIS IN NUMERICAL ORDER - Three year trends



KPI Summary Table

KPI Summary Table

NOTE: The indicators shown below are based on the calculation approach described in the Technical Specifications document and do not show any of the alternative approaches developed for several of the indicators.

		OLDER PERSONS SERVICES - 3 year trends							
		Org-G	Org-F	Org-E	Org-D	Org-C	Org-B	Org-A	GROUP AVG.
KPI #1 28-day readmissions	2004-05	15%	8%	8%	4%	2%	5%	7%	7%
	2005-06	4%	9%	3%	8%	3%	2%	6%	5%
	2006-07	6%	6%	7%	2%	7%	3%	5%	5%
KPI #2 National Standards compliance (Level 1)	2004-05	100%	100%	100%	100%	100%	100%	100%	100%
	2005-06	100%	100%	100%	100%	100%	100%	100%	100%
	2006-07	100%	100%	100%	100%	100%	100%	100%	100%
KPI #3 Average acute LOS	2004-05	51.9	42.7	27.4	46.7	37.4	40.5	39.3	40.8
	2005-06	54.9	37.6	34.3	52.0	36.7	45.9	39.5	43.0
	2006-07	37.7	42.3	38.9	46.6	53.5	64.5	35.8	45.6
KPI #4 Average acute episode cost	2004-05	\$26,241	\$20,950	\$14,672	\$26,822	\$15,611	\$19,238	\$15,589	\$19,875
	2005-06	\$41,155	\$18,846	\$20,441	\$27,312	\$16,139	\$19,773	\$24,726	\$24,056
	2006-07	\$23,957	\$21,748	\$25,021	\$29,205	\$23,452	\$31,541	\$26,624	\$25,935
KPI #5 Treatment days per 3-month community care period	2004-05	6.2	7.5	8.4	8.2	4.7	6.2	7.4	6.9
	2005-06	7.6	8.3	9.4	8.2	4.7	5.9	3.9	6.9
	2006-07	7.8	5.5	8.8	7.7	4.6	6.6	8.7	7.1
KPI #6 Cost per 3-month community care period	2004-05	\$1,534	\$1,687	\$1,842	\$1,670	\$1,391	\$2,436	\$1,079	\$1,663
	2005-06	\$1,804	\$1,783	\$1,829	\$1,722	\$582	\$2,215	\$818	\$1,536
	2006-07	\$2,426	\$2,310	\$1,687	\$1,798	\$893	\$2,395	\$1,339	\$1,835

KPI Summary Table

KPI Summary Table

NOTE: The indicators shown below are based on the calculation approach described in the Technical Specifications document and do not show any of the alternative approaches developed for several of the indicators.

			OLDER PERSONS SERVICES - 3 year trends							
			Org-G	Org-F	Org-E	Org-D	Org-C	Org-B	Org-A	GROUP AVG.
KPI #7	% target population receiving ambulatory services	2004-05	0.6%	1.3%	1.1%	1.1%	0.6%	1.0%	0.6%	0.9%
		2005-06	0.6%	1.2%	0.8%	1.2%	0.9%	1.2%	0.6%	0.9%
		2006-07	0.7%	1.0%	1.0%	1.0%	0.9%	1.6%	0.5%	0.9%
	% target population receiving inpatient services	2004-05	0.15%	0.24%	0.27%	0.19%	0.19%	0.25%	0.15%	0.21%
		2005-06	0.10%	0.26%	0.26%	0.24%	0.18%	0.18%	0.17%	0.20%
		2006-07	0.11%	0.21%	0.29%	0.20%	0.22%	0.16%	0.15%	0.19%
	% target population receiving residential services	2004-05	0.00%	0.18%	0.13%	0.20%	0.00%	0.00%	0.00%	0.17%
		2005-06	0.00%	0.13%	0.08%	0.12%	0.00%	0.00%	0.00%	0.11%
		2006-07	0.00%	0.05%	0.09%	0.14%	0.00%	0.00%	0.00%	0.10%
KPI #8	Local access to inpatient care	2004-05	100%	65%	69%	50%	n.a	88%	94%	78%
		2005-06	100%	88%	83%	65%	n.a	78%	92%	84%
		2006-07	86%	76%	76%	59%	94%	80%	100%	82%
KPI #9	New client index	2004-05	67%	73%	88%	76%	69%	59%	88%	74%
		2005-06	49%	70%	89%	71%	72%	73%	60%	69%
		2006-07	41%	91%	76%	68%	51%	65%	38%	61%
KPI #10	Area per capita resources - Ambulatory services	2004-05	\$24	\$40	\$35	\$32	\$11	\$47	\$15	\$29
		2005-06	\$24	\$37	\$30	\$39	\$9	\$55	\$13	\$30
		2006-07	\$32	\$37	\$31	\$39	\$11	\$65	\$17	\$33

KPI Summary Table

KPI Summary Table

NOTE: The indicators shown below are based on the calculation approach described in the Technical Specifications document and do not show any of the alternative approaches developed for several of the indicators.

		OLDER PERSONS SERVICES - 3 year trends							
		Org-G	Org-F	Org-E	Org-D	Org-C	Org-B	Org-A	GROUP AVG.
Area per capita resources - Inpatient services	2004-05	\$59	\$61	\$69	\$55	\$33	\$117	\$44	\$63
	2005-06	\$47	\$59	\$61	\$58	\$36	\$76	\$50	\$55
	2006-07	\$95	\$62	\$71	\$62	\$38	\$78	\$61	\$67
Area per capita resources - Residential services	2004-05	n.a	\$114	\$75	\$91	n.a	n.a	n.a	\$93
	2005-06	n.a	\$111	\$68	\$93	n.a	n.a	n.a	\$91
	2006-07	n.a	\$115	\$68	\$95	n.a	n.a	n.a	\$93
KPI #11 Pre admission community care	2004-05	40%	50%	39%	54%	38%	37%	77%	48%
	2005-06	35%	68%	45%	78%	69%	53%	66%	59%
	2006-07	27%	42%	53%	51%	36%	81%	65%	51%
KPI #12 Post discharge community care	2004-05	38%	65%	75%	69%	21%	73%	66%	58%
	2005-06	40%	66%	59%	73%	40%	68%	64%	59%
	2006-07	75%	44%	75%	69%	30%	67%	62%	60%
KPI #13 Outcomes readiness - inpatient services	2004-05	37%	n.a	n.a	n.a	162%	127%	125%	113%
	2005-06	110%	92%	95%	44%	163%	136%	134%	110%
	2006-07	123%	89%	172%	94%	193%	134%	128%	133%
Outcomes readiness - ambulatory services	2004-05	62%	n.a	n.a	n.a	118%	12%	51%	61%
	2005-06	72%	27%	32%	15%	86%	16%	74%	46%
	2006-07	94%	14%	37%	15%	125%	29%	89%	57%

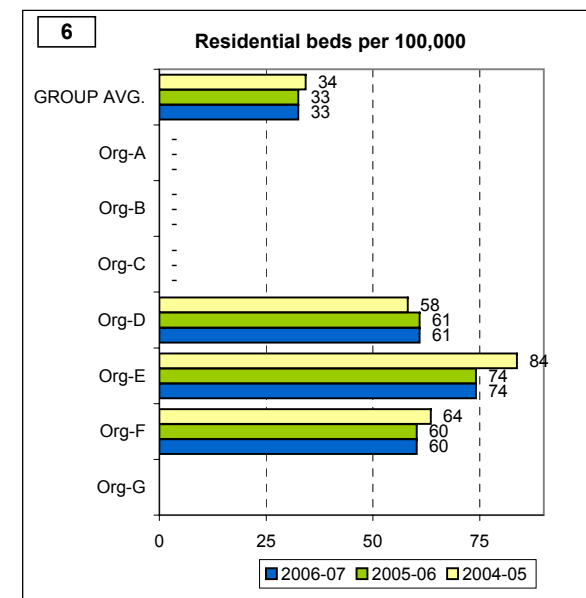
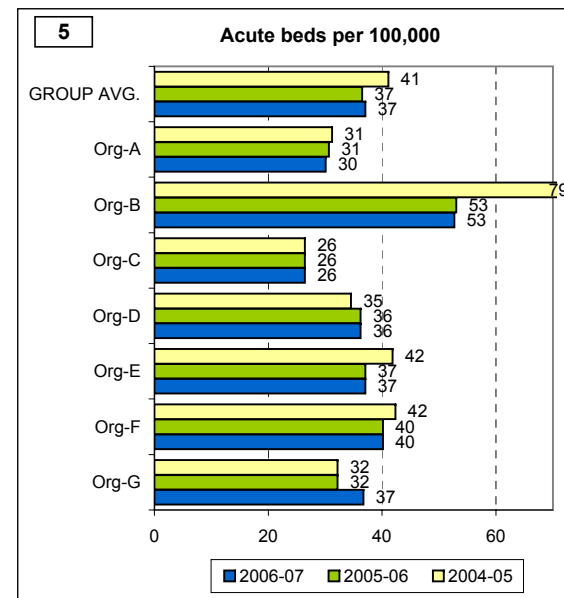
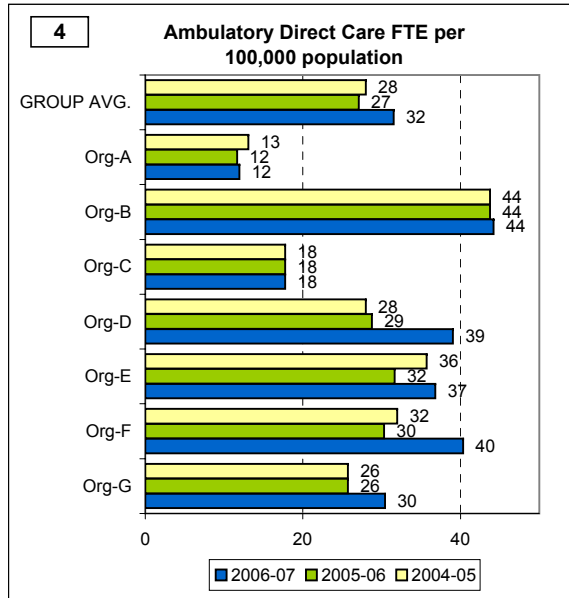
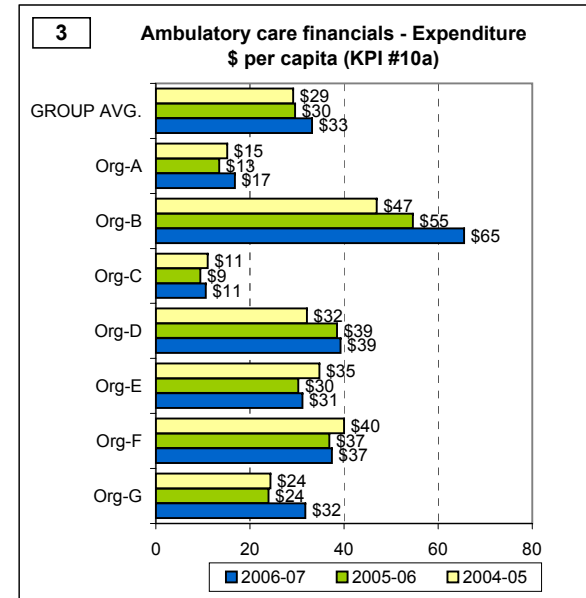
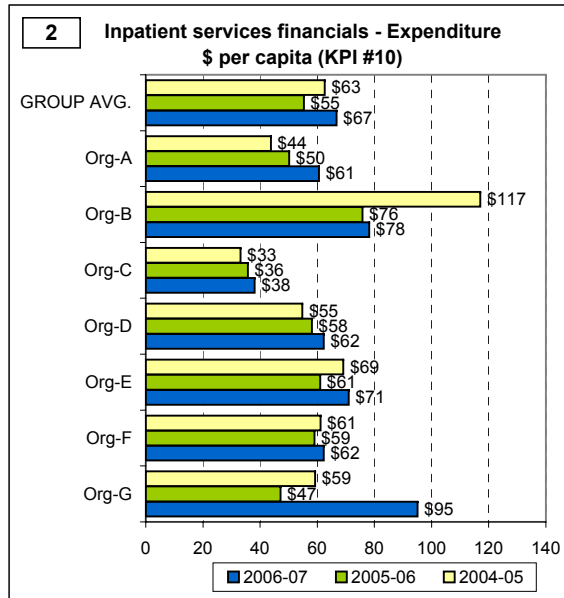
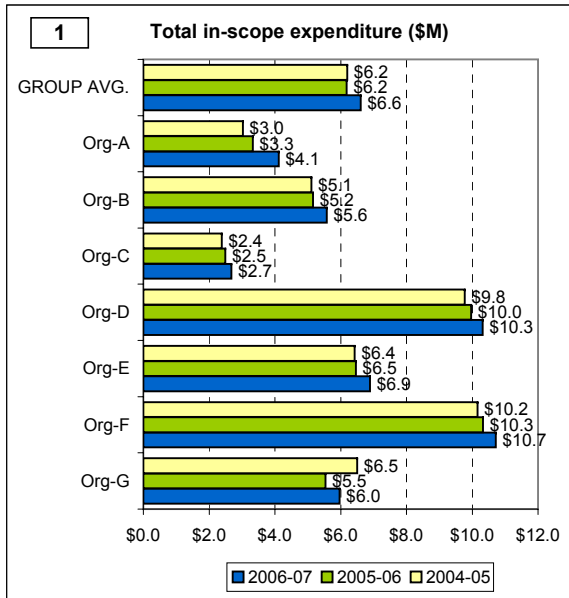
PART B

Selected indicators grouped by themes

1. Comparative resources available to the organisation
2. Efficiency in use of resources
3. Productivity and activity of ambulatory services
4. Continuity of care
5. Access to ambulatory care
6. Access to acute inpatient care
7. Acute Inpatient casemix - (a) Diagnosis (b) HoNOS at admission
(c) RUG-ADL at admission
8. Ambulatory care casemix - (a) Diagnosis and (b) HoNOS
9. Depression - Acute Inpatient separations
10. Dementia - Acute Inpatient separations

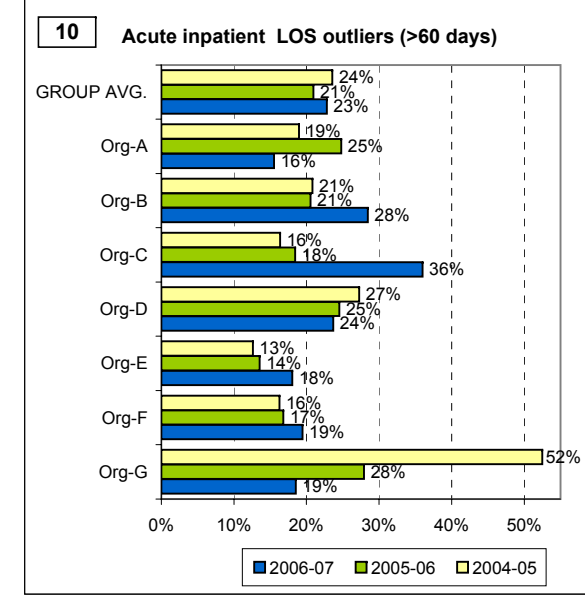
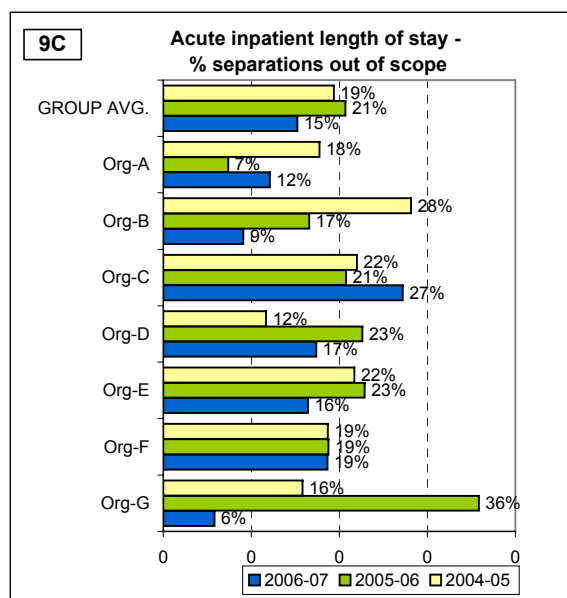
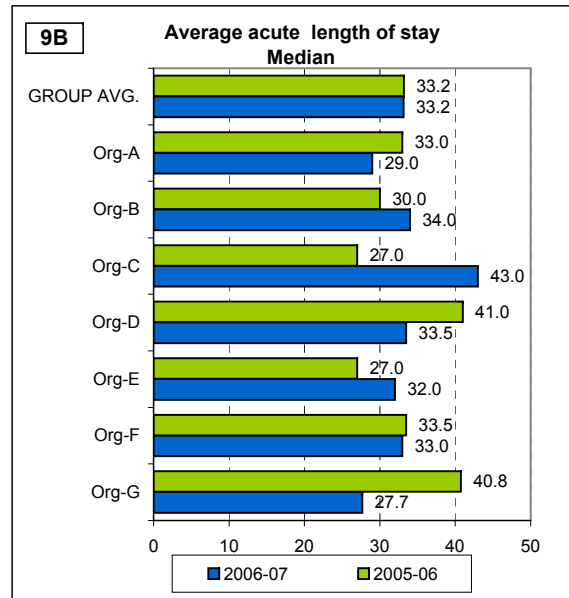
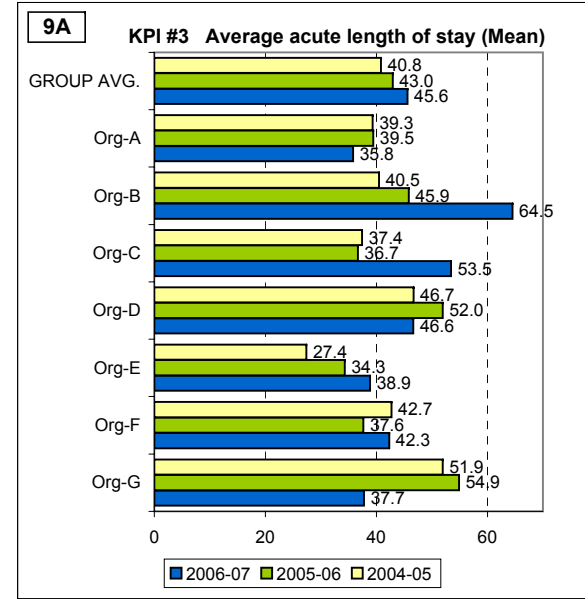
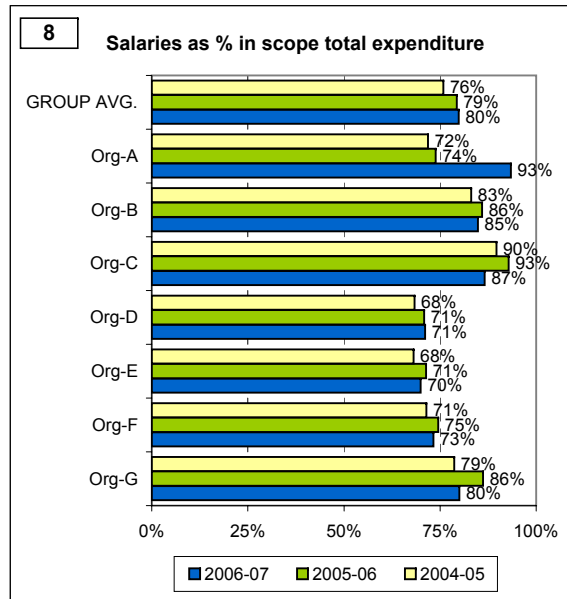
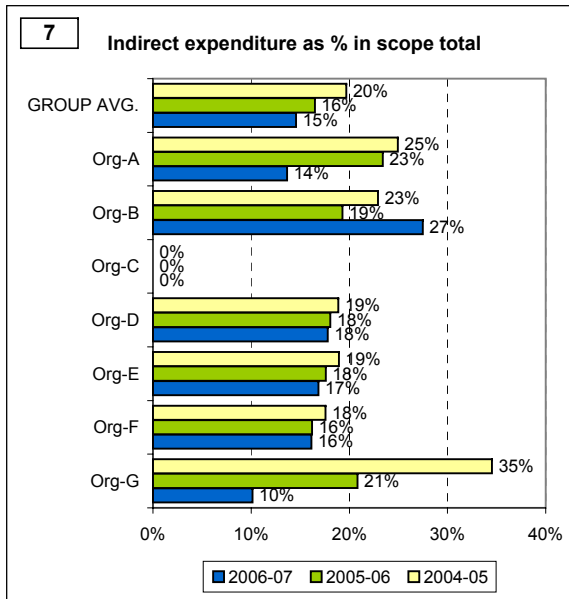
Theme Charts

THEME 1: Comparative resources available to the organisation



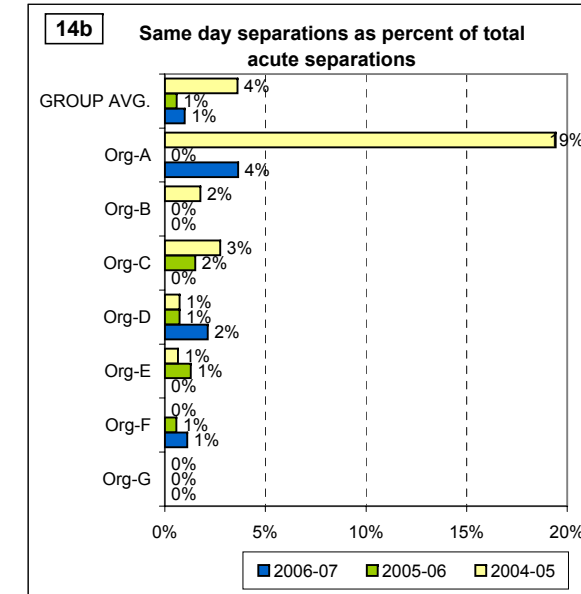
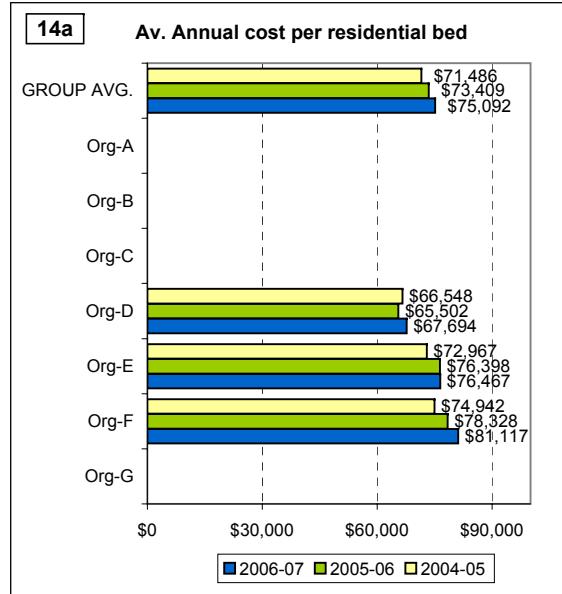
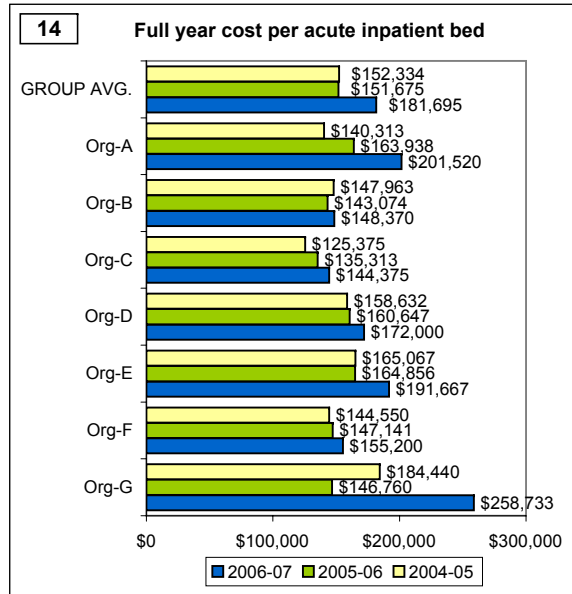
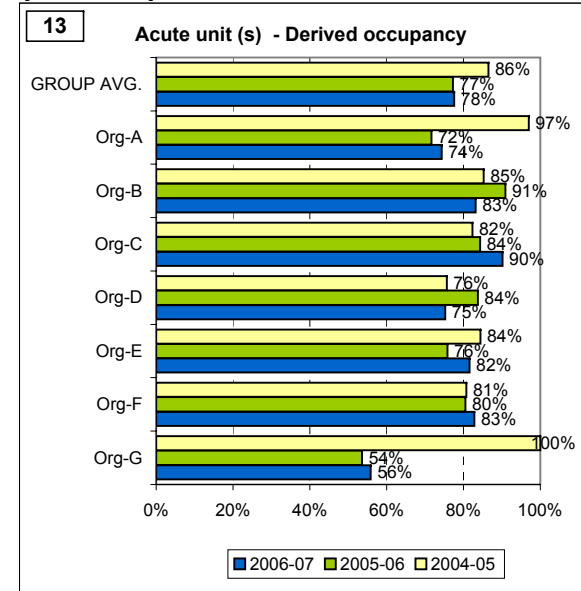
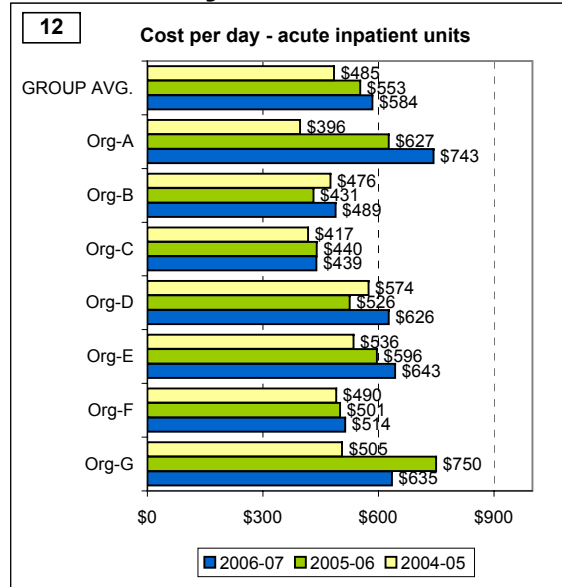
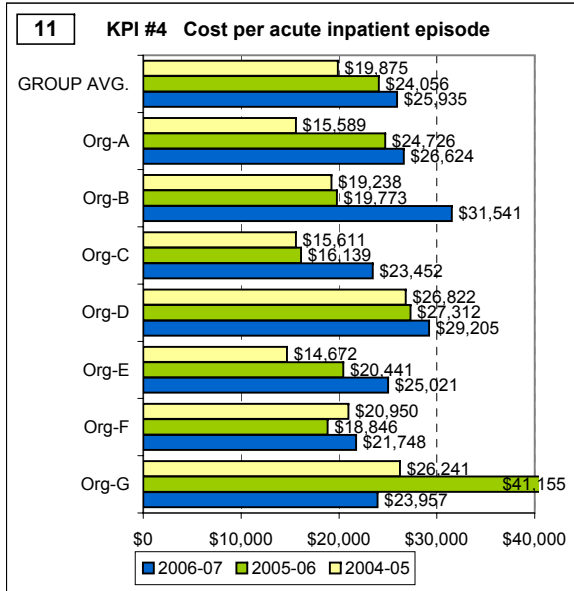
Theme Charts

THEME 2: Efficiency in use of resources



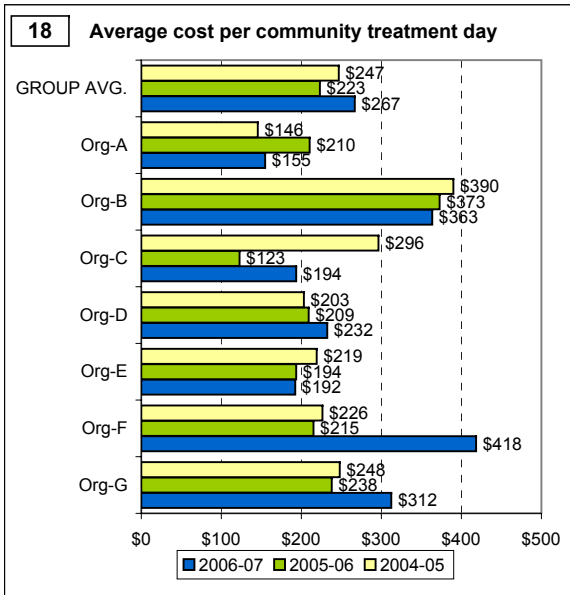
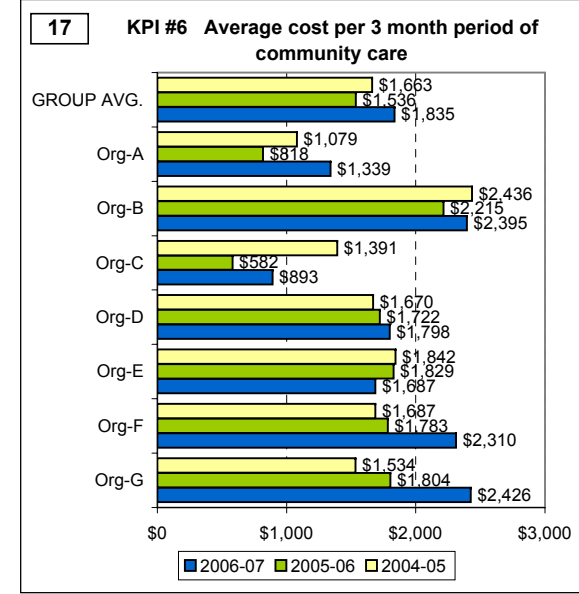
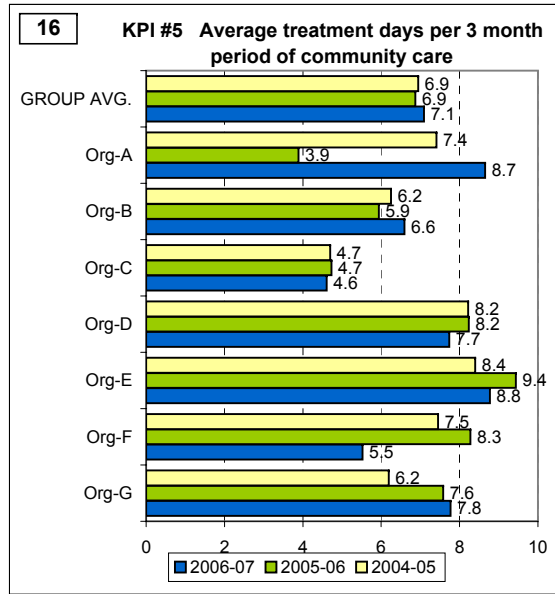
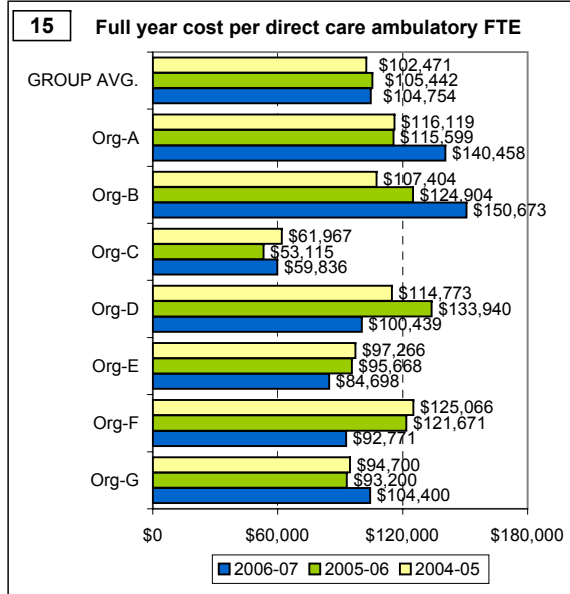
Theme Charts

THEME 2: Efficiency in use of resources (cont'd)



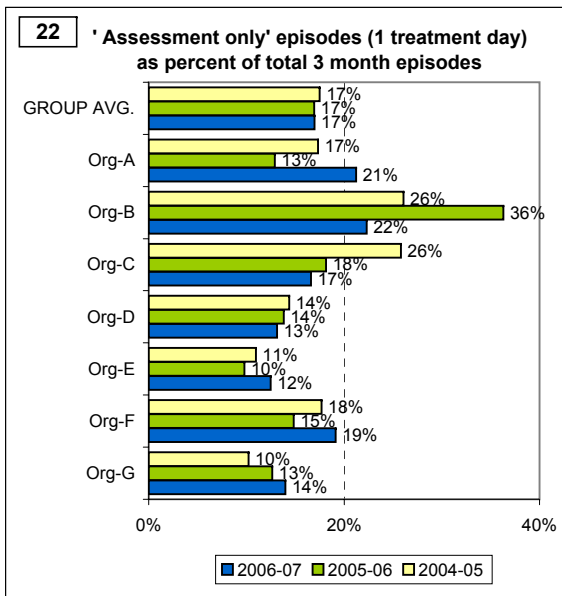
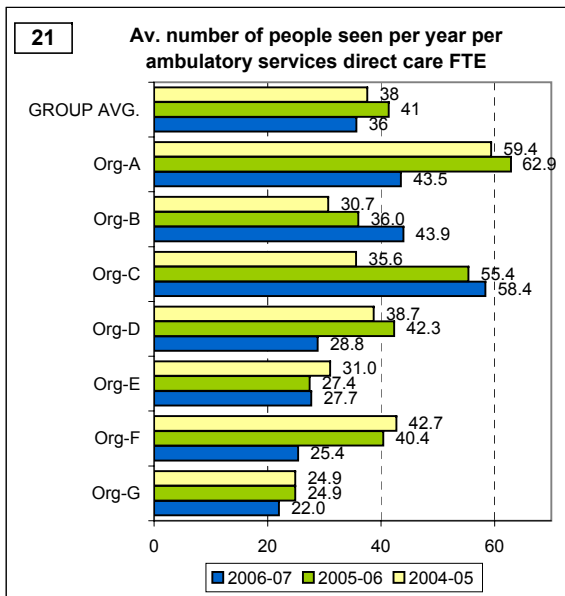
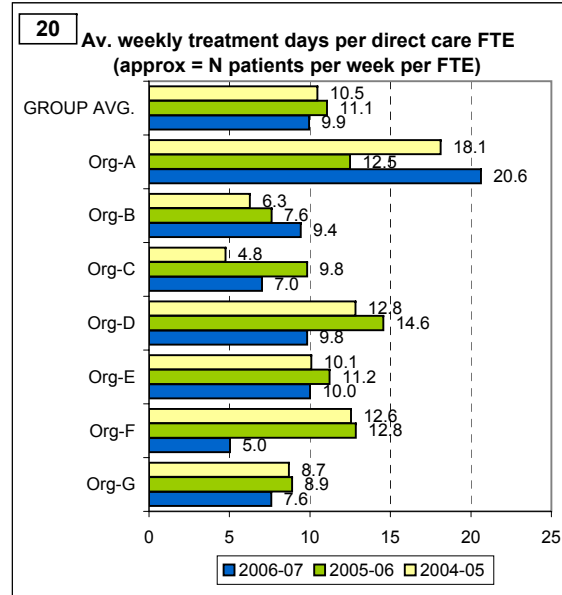
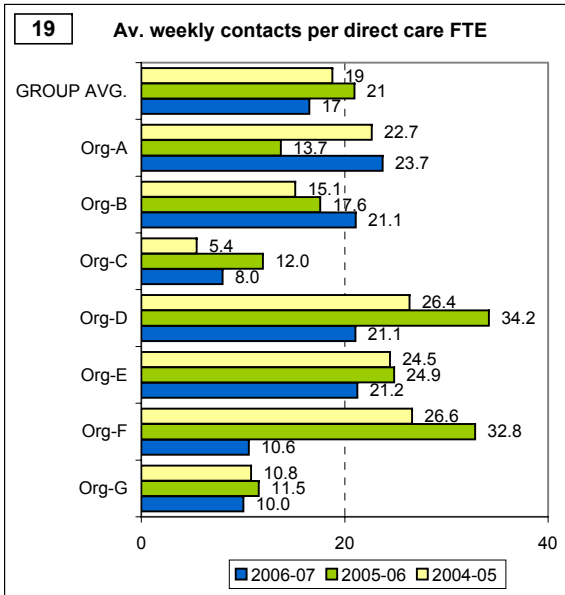
Theme Charts

THEME 2: Efficiency in use of resources (cont'd)



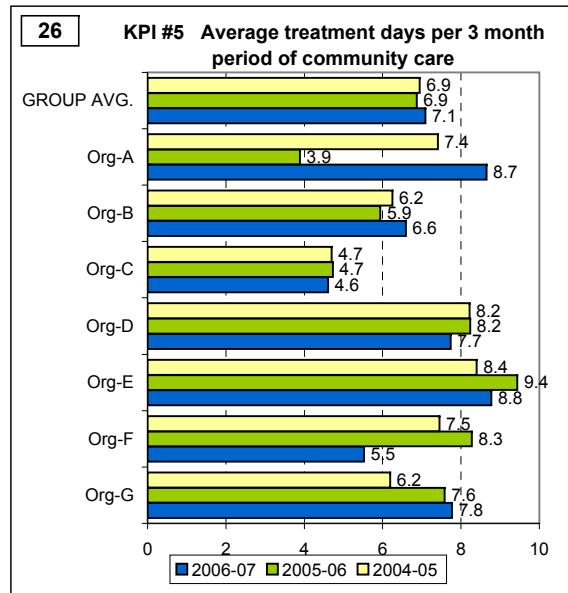
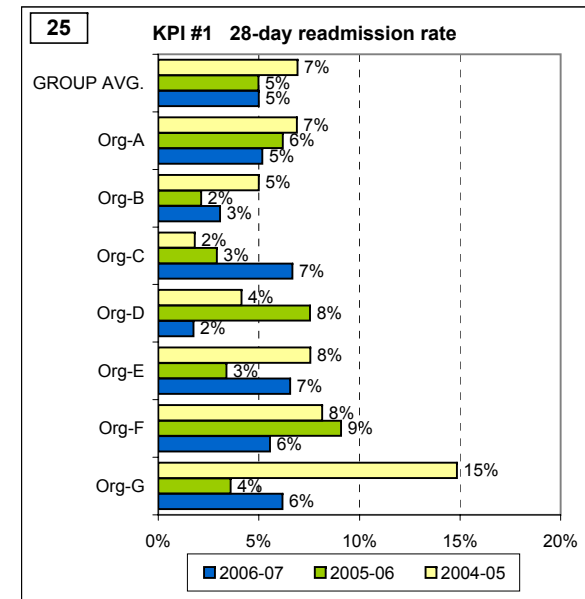
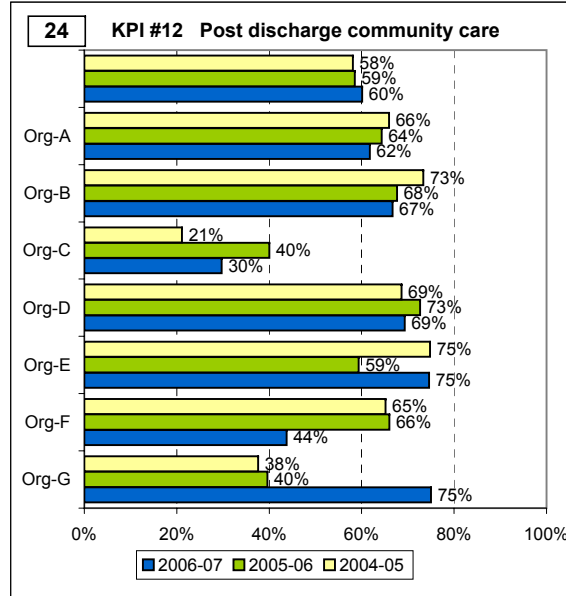
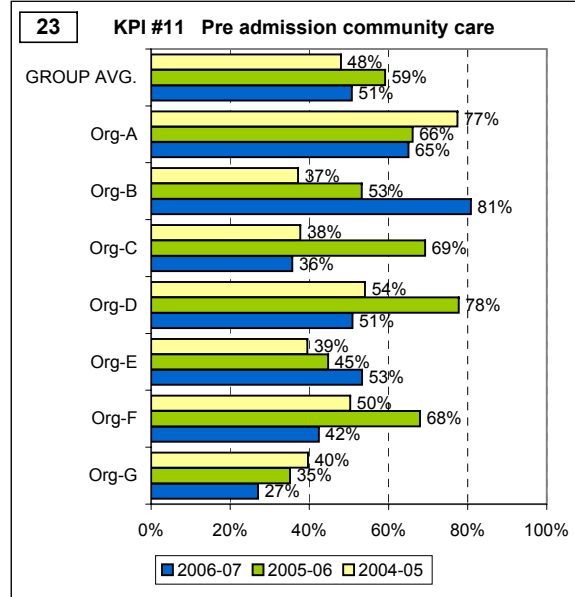
Theme Charts

THEME 3: Productivity and activity of ambulatory services



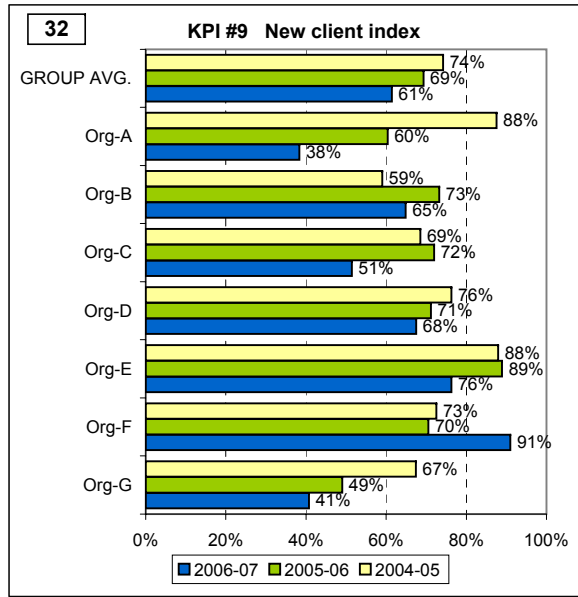
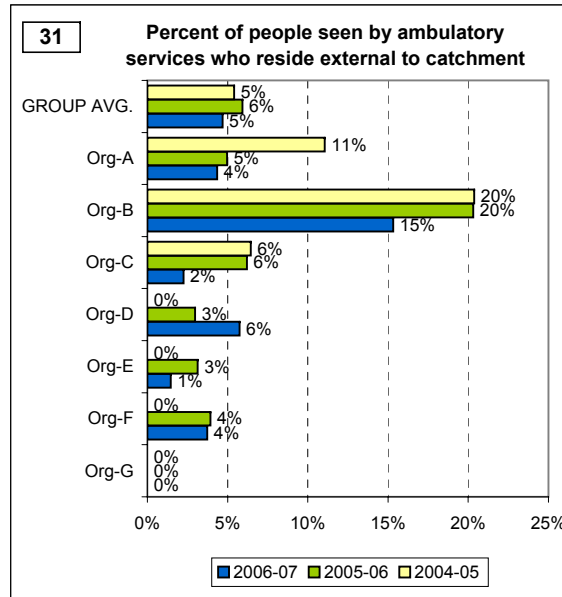
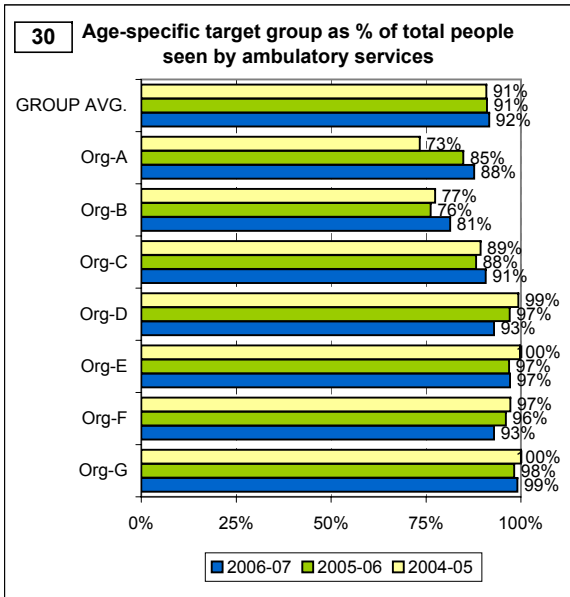
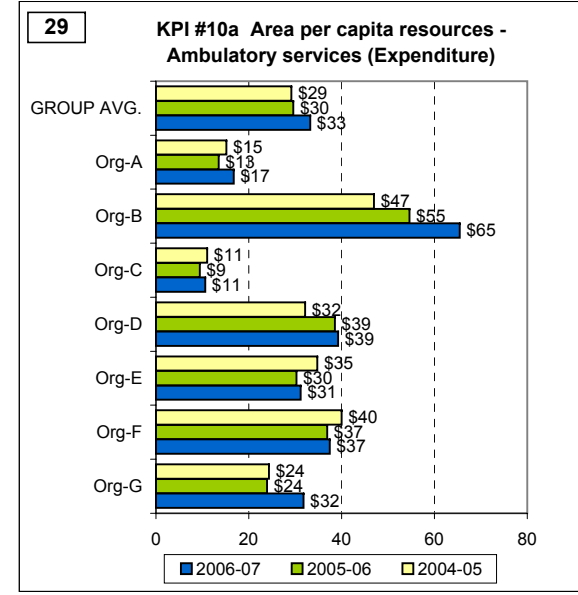
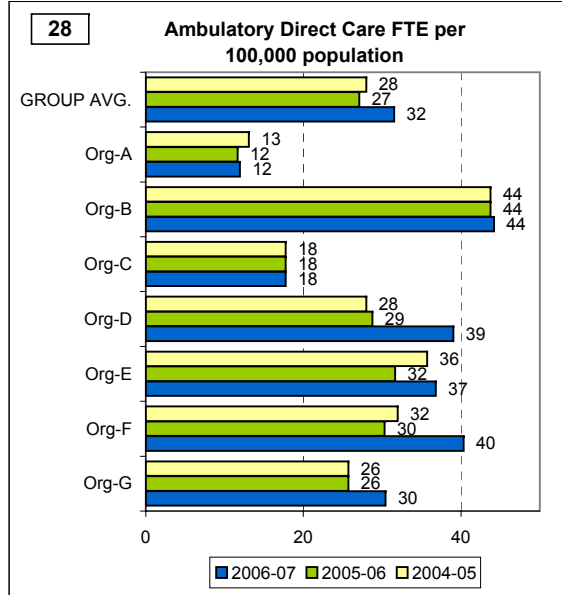
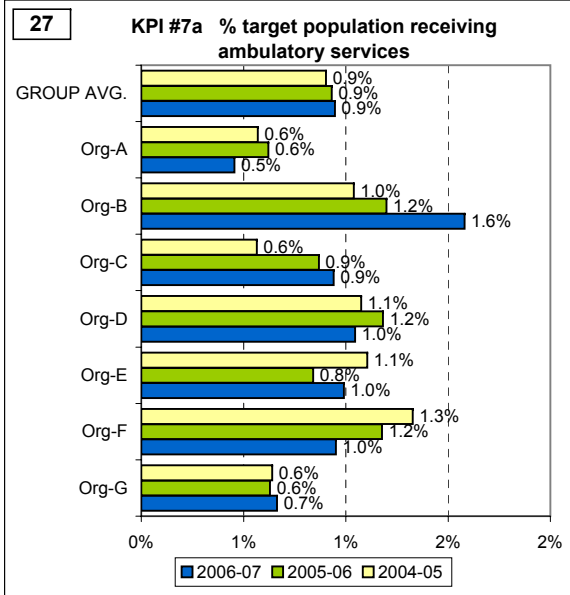
Theme Charts

THEME 4: Continuity of care



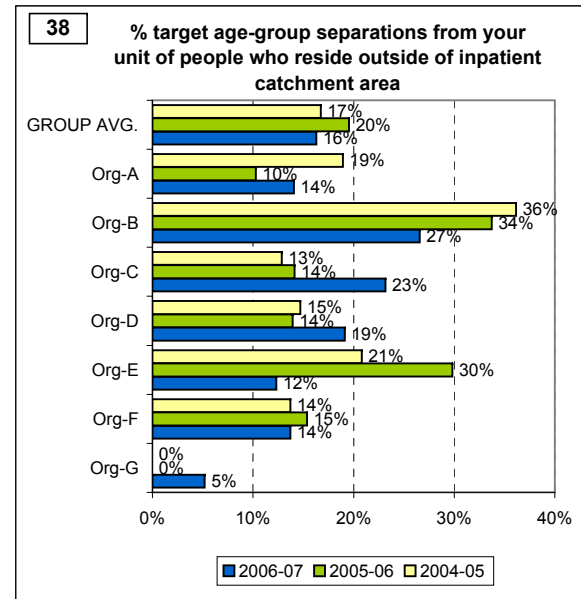
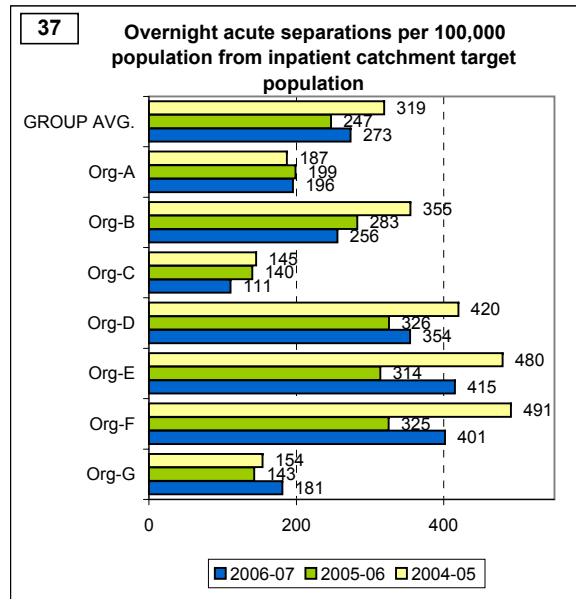
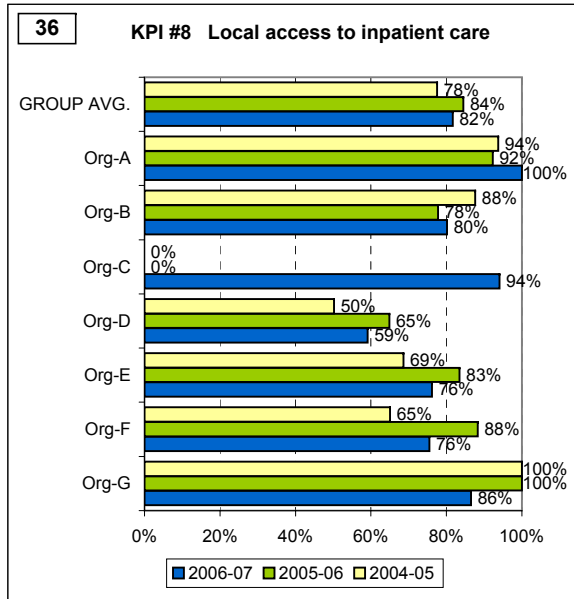
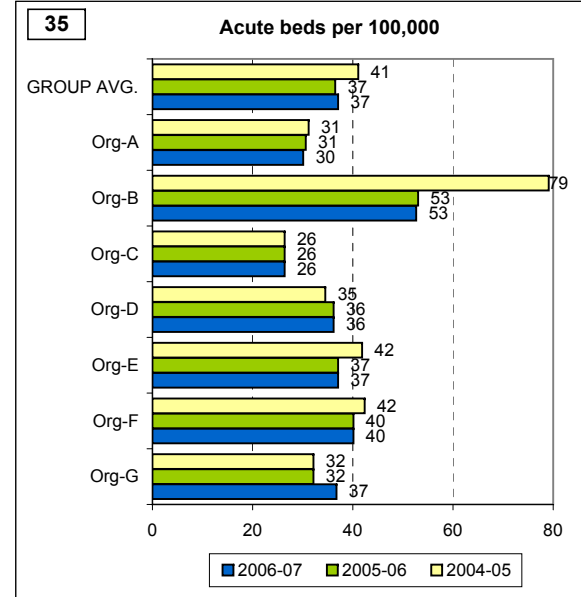
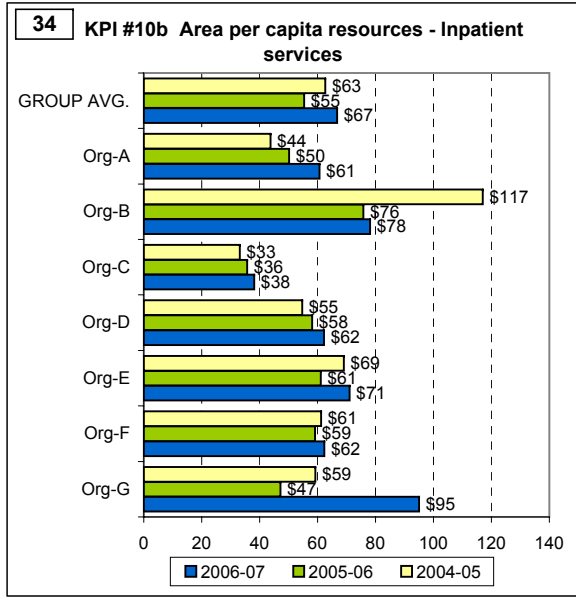
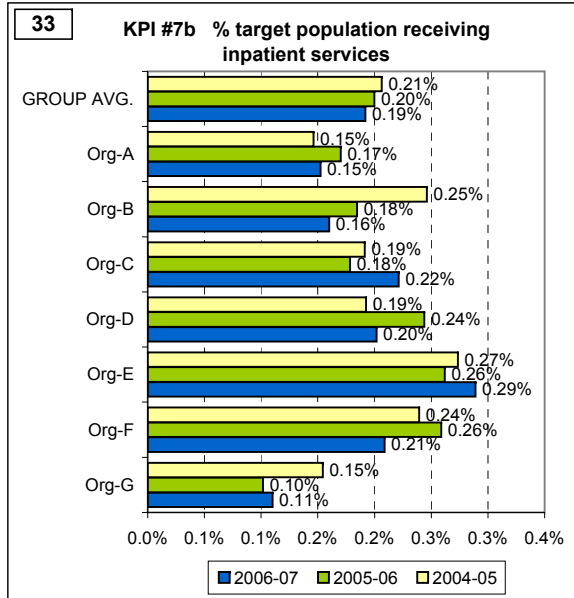
Theme Charts

THEME 5: Access to ambulatory care



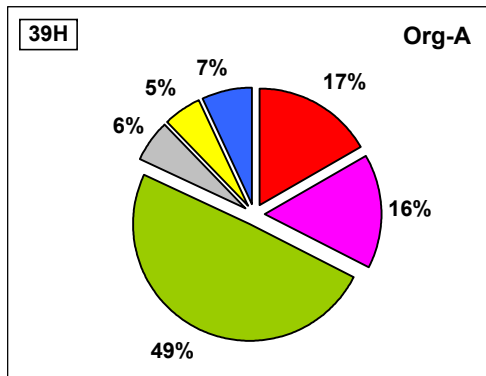
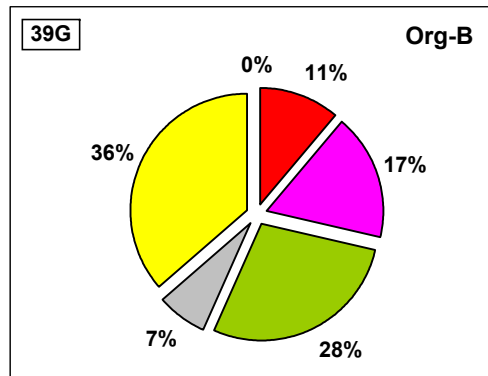
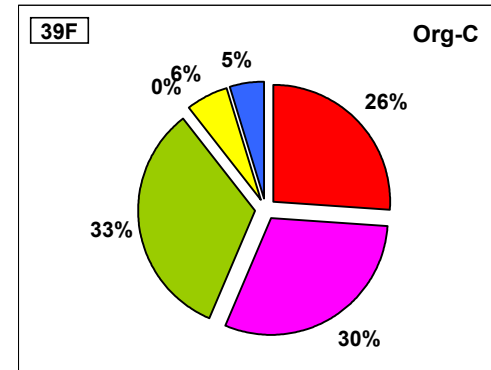
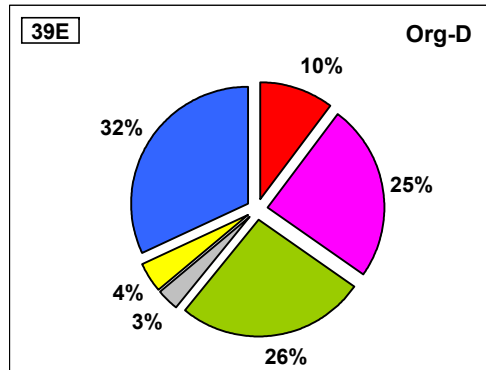
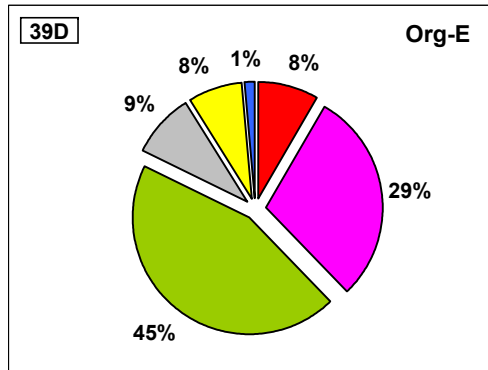
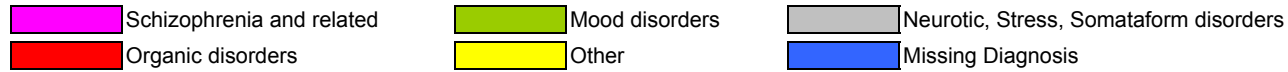
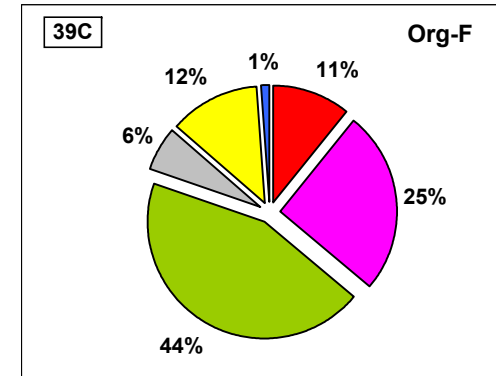
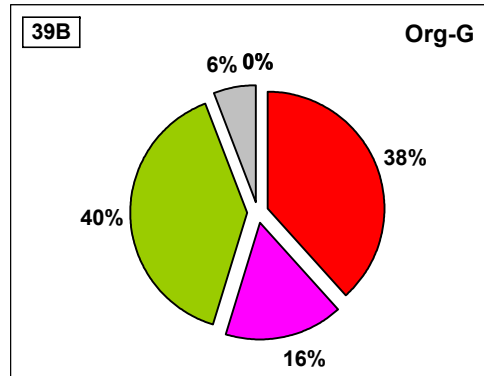
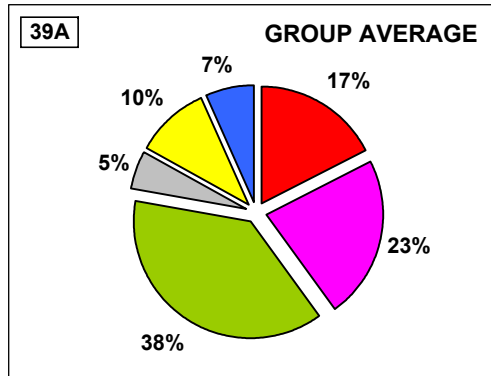
Theme Charts

THEME 6: Access to acute inpatient care



Theme Charts

THEME 7: Acute Inpatient casemix- (a) Diagnosis 2006-07

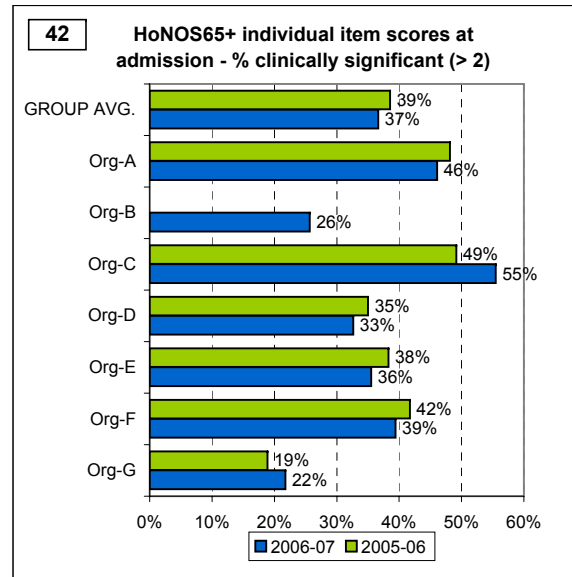
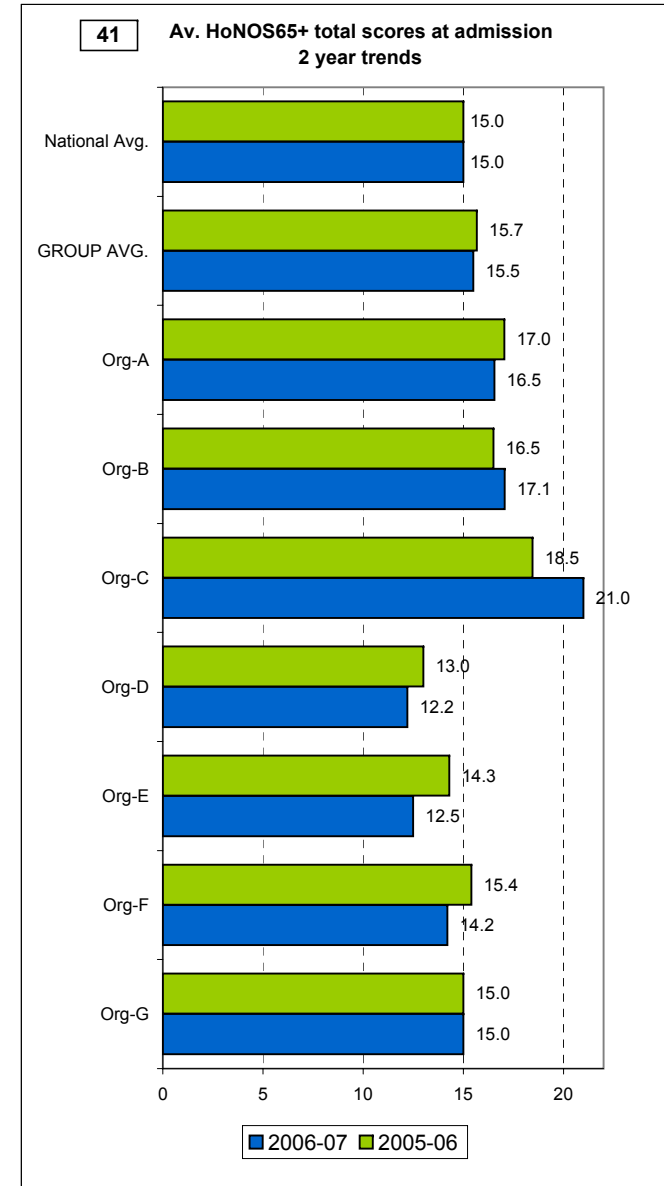
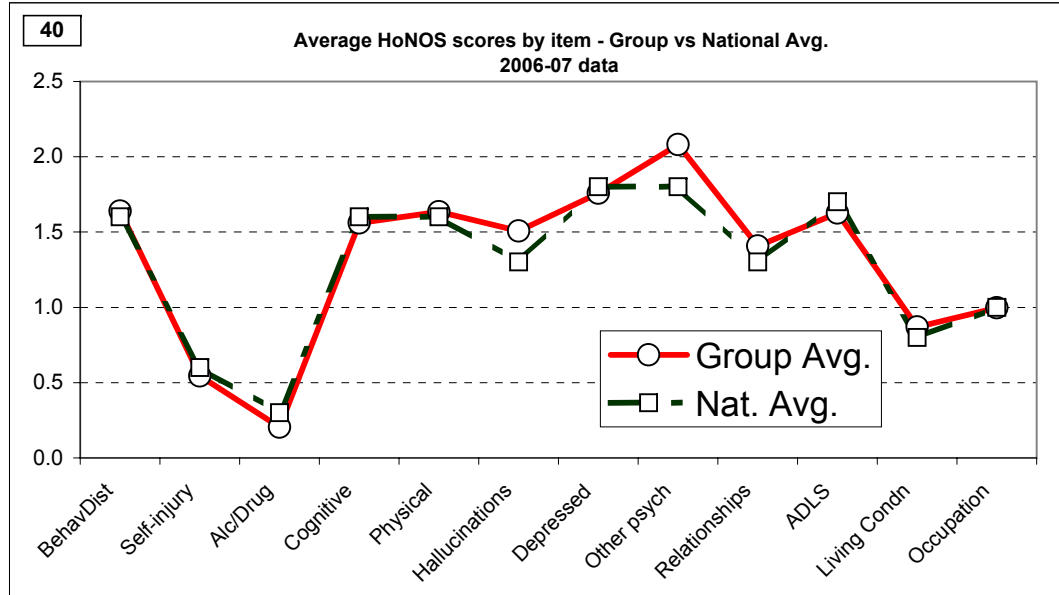


Percentage overnight separations with Diagnosis data:

39i	Group average	100%	Org-A	100%	Org-B	100%	Org-C	100%	Org-D	100%
			Org-E	100%	Org-F	100%	Org-G	100%		

Theme Charts

THEME 7: Acute Inpatient casemix - (b) HoNOS65+ at admission

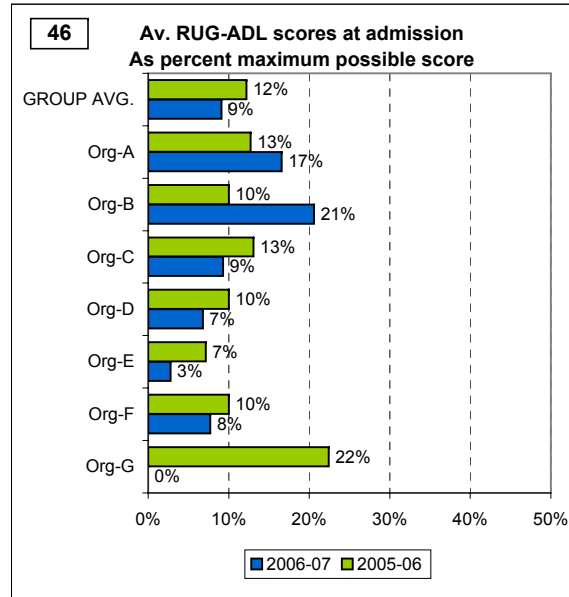
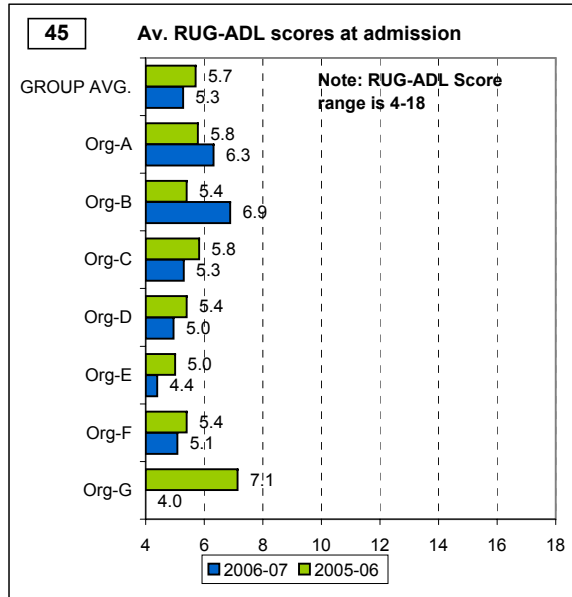


44 Percentage overnight separations with HoNOS65+ Admission, 2006-07 data:

Group average	83%	Org-A	93%	Org-B	97%	Org-C	84%	Org-D	70%
		Org-E	83%	Org-F	53%	Org-G	100%		

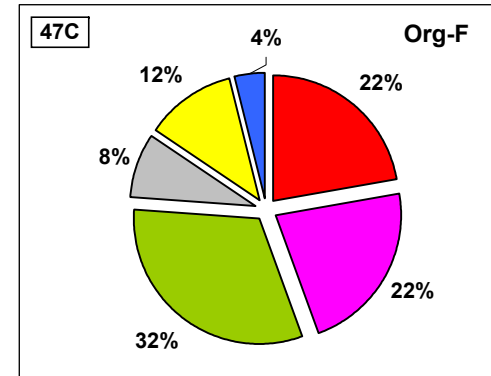
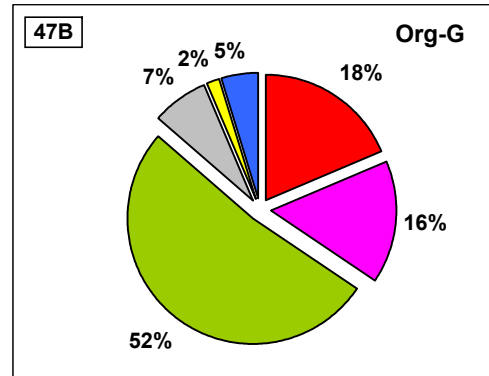
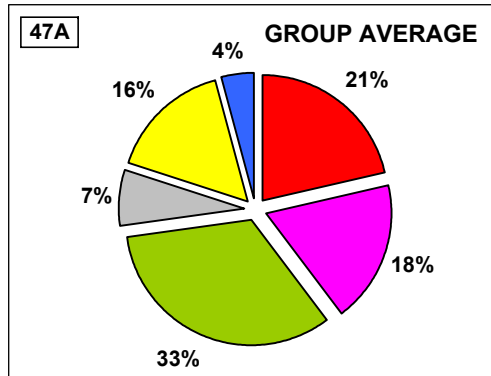
Theme Charts

THEME 7: Acute Inpatient casemix - (c) RUG-ADL at admission

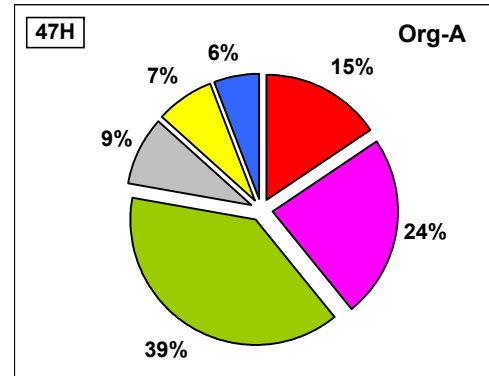
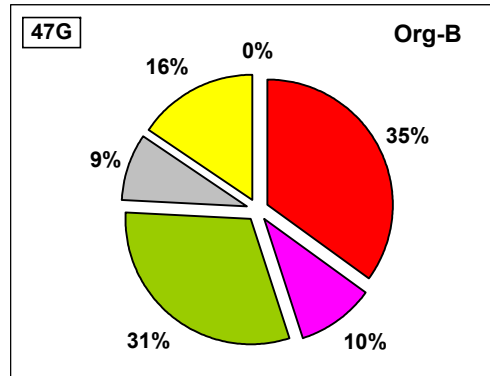
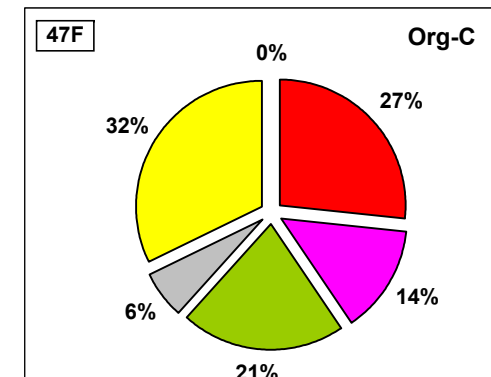
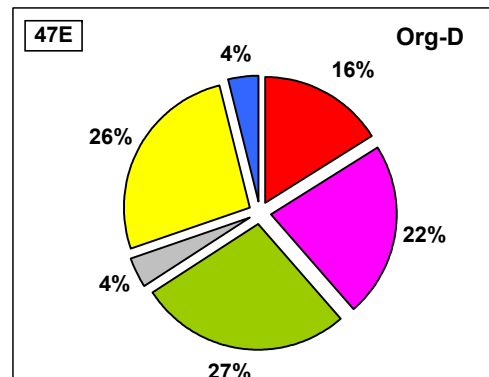
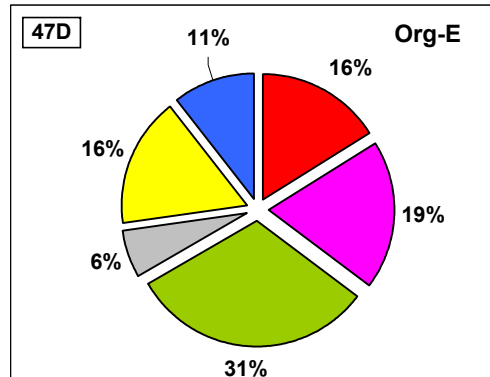


Theme Charts

THEME 8: Ambulatory care casemix- (a) Diagnosis, 2006-07



■ Schizophrenia and related ■ Mood disorders ■ Neurotic, Stress, Somataform disorders
■ Organic disorders ■ Other ■ Missing Diagnosis

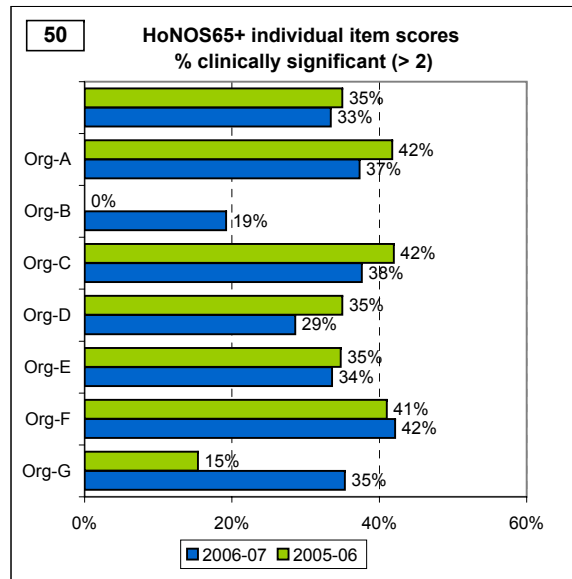
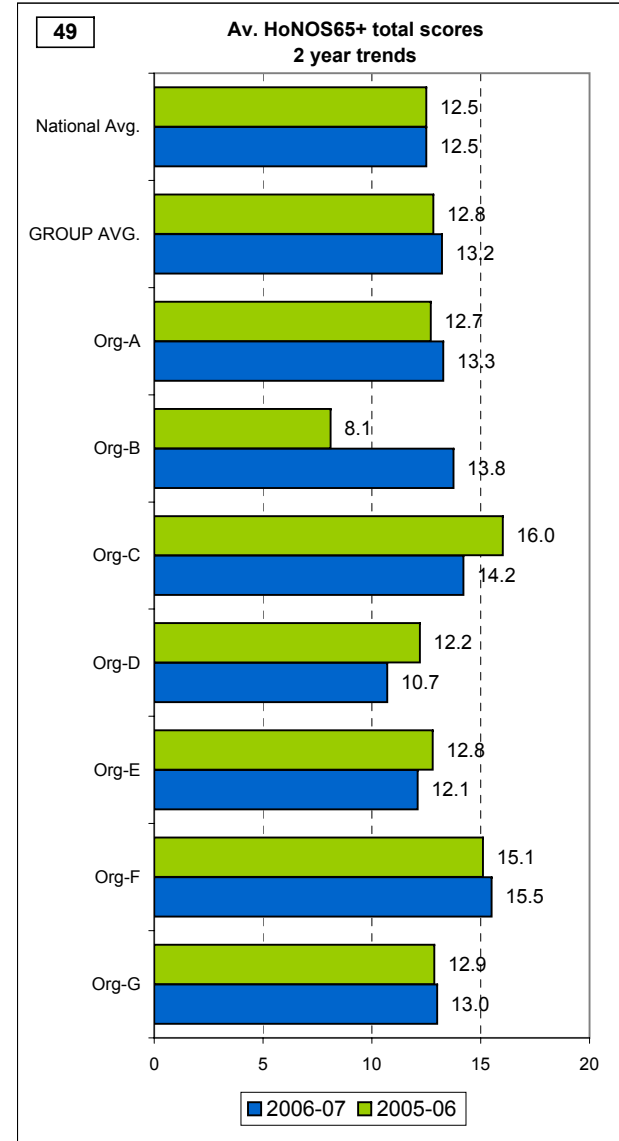
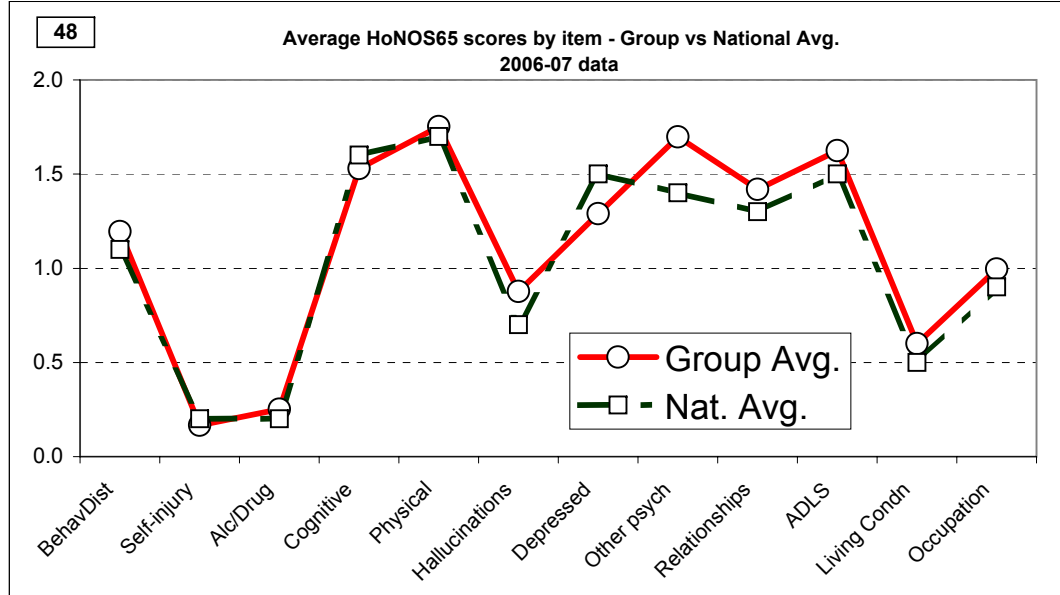


47i Percentage total persons seen in community with Diagnosis data:

Group average	92%	Yellow	98%	Magenta	100%	Black	75%	Orange	101%
		Purple	100%	ElecBlue	100%	Ruby	73%		

Theme Charts

THEME 8: Ambulatory care casemix- (b) HoNOS65+

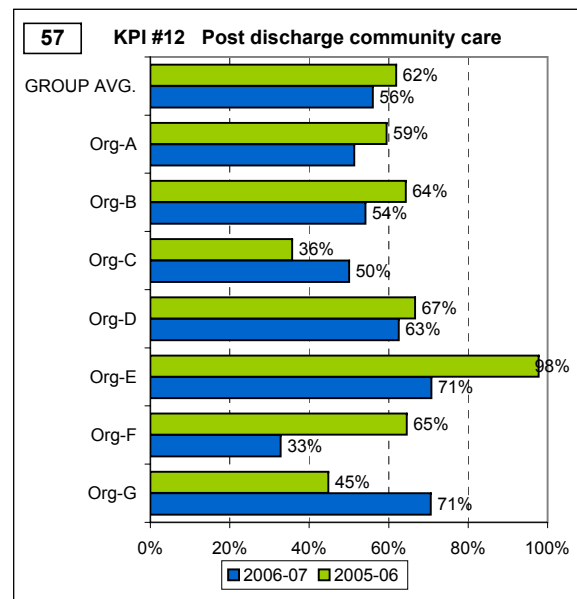
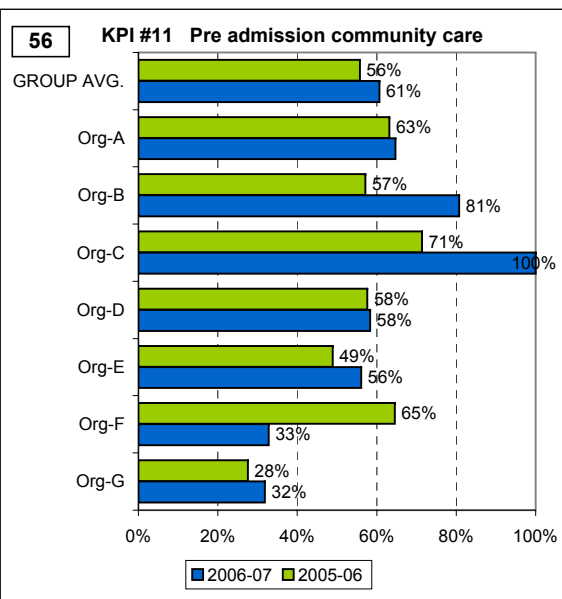
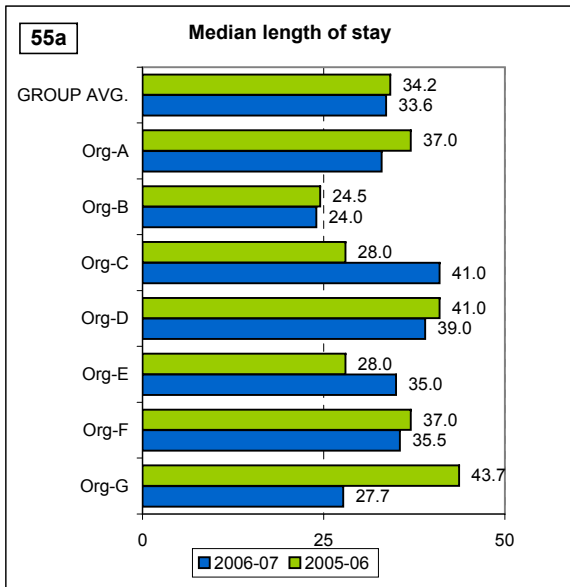
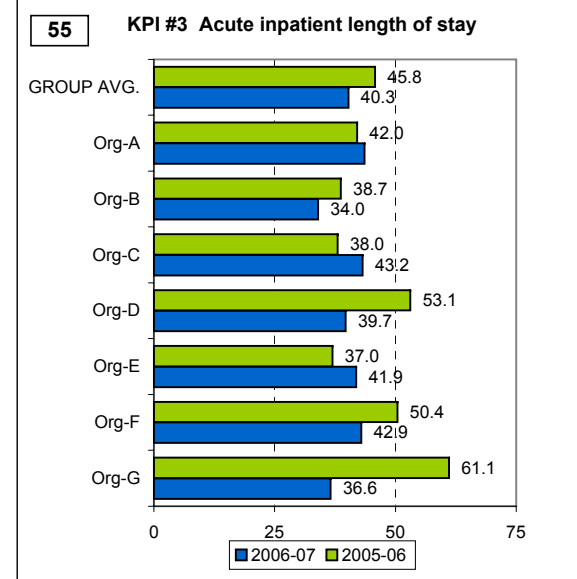
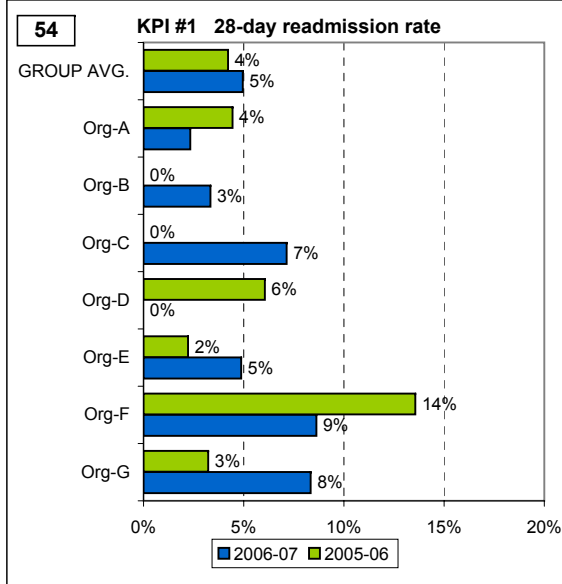
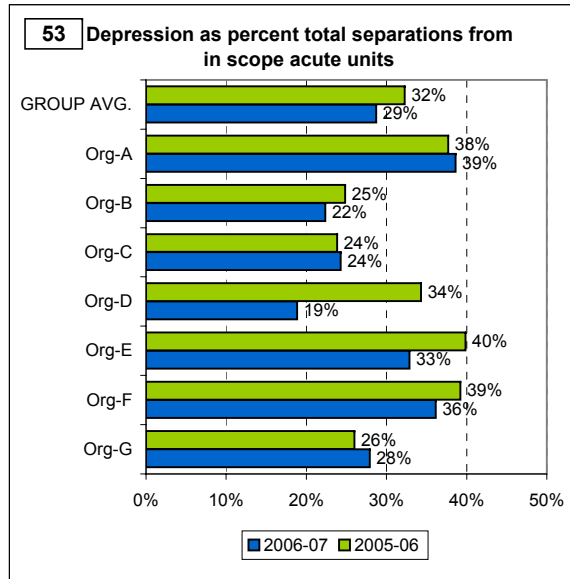


52 Percentage total persons seen in community included in HoNOS65+ data:

Group average	54%	Org-A	54%	Org-B	24%	Org-C	57%	Org-D	31%
		Org-E	65%	Org-F	49%	Org-G	100%		

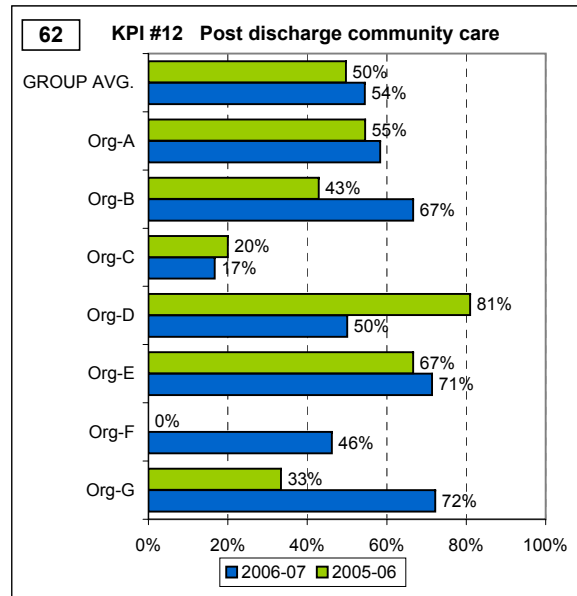
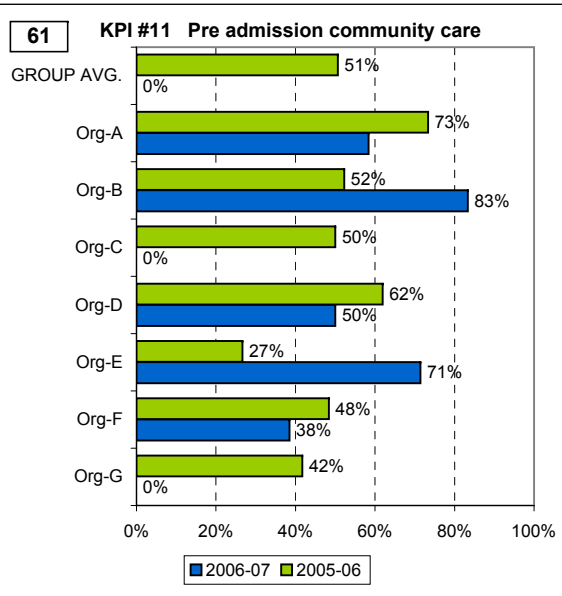
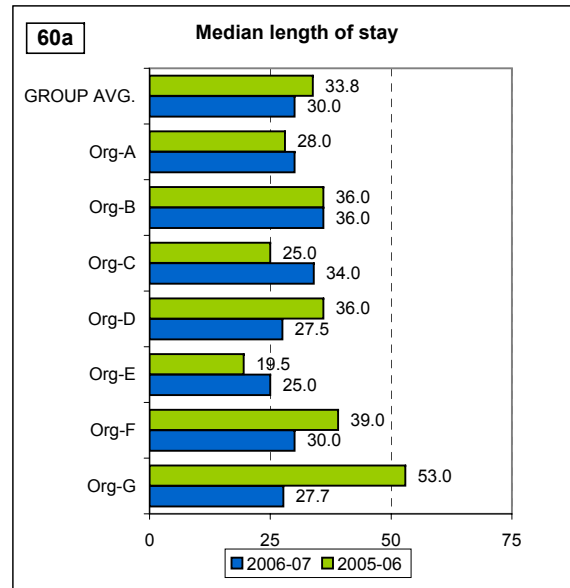
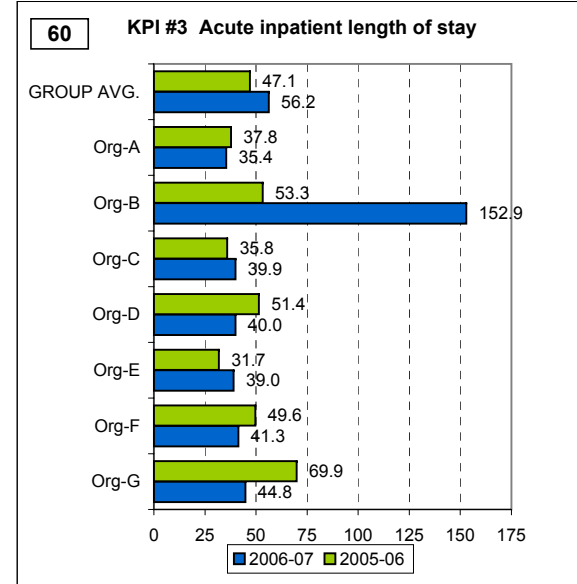
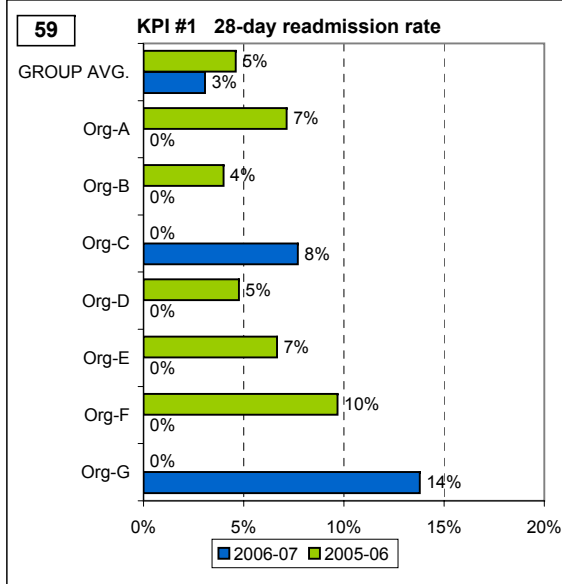
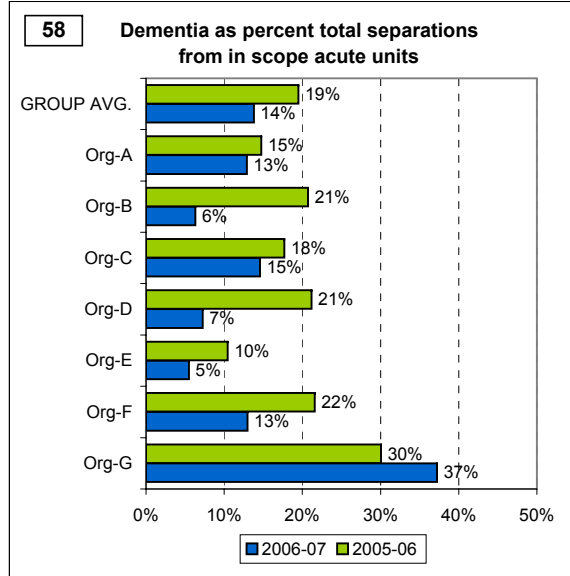
Theme Charts

THEME 9: Depression - Acute Inpatient separations



Theme Charts

THEME 10: Dementia - Acute Inpatient separations



Supplementary Indicator Specs

Details on how the supplementary indicators were constructed				
All reference numbers link to the numbers in boxes within the indicator charts				
Ref		Numerator	Denominator	Notes
THEME 1: Comparative resources available to the organisation				
1	Total in-scope expenditure (\$M)			Simply adds all in scope expenditure reported and converts to millions
2	Inpatient services financials - \$ per capita	Total expenditure/funding reported for in scope inpatient services (acute and non acute)	Total catchment population for in scope acute inpatient services	Indicator shows differential between funding and expenditure
3	Ambulatory services financials - \$ per capita	Total expenditure/funding reported for in scope ambulatory services	Total catchment population for in scope ambulatory services	Indicator shows the difference between funding and expenditure
4	Ambulatory services Direct Care FTE per 100,000 population	Number of ambulatory services direct care FTE	Total catchment population for in scope ambulatory services	
5	Acute beds per 100,000 population	Number of in scope acute inpatient beds	Total catchment population for in scope acute inpatient services	
6	Residential beds per 100,000 population	Number of in scope residential beds	Total catchment population for in scope residential services	
THEME 2: Efficiency in use of resources				
7	Indirect expenditure as % in scope total	Total indirect expenditure reported for all in scope services	Total expenditure reported for all in scope services	Indicator is intended to assess the extent to which organisations are comparable in what is included in the overall reported expenditure
8	Salaries as % in scope total expenditure	Total salaries and wages expenditure reported for all in scope services	Total expenditure reported for all in scope services	Indicator is intended to assess the extent to which organisations are comparable in what is included in the overall reported expenditure
9A	Acute inpatient length of stay (KPI #3) - 2004-05			Constructed as per KPI #3 - see Technical Specifications. Based on arithmetic mean, in scope separations only
9B	Acute inpatient length of stay - Median	Data as submitted by organisations		Data available only for 2005-06 and 2006-07. Based on in scope separations.
9C	Acute inpatient length of stay - % separations out of scope	Number of acute inpatient separations defined as out of scope	Total separations from in scope acute inpatient units	Indicator is intended to assess the extent to which out of scope separations are excluded from the calculation of KPI #3 (av length of stay)

Supplementary Indicator Specs

Details on how the supplementary indicators were constructed				
All reference numbers link to the numbers in boxes within the indicator charts				
Ref		Numerator	Denominator	Notes
10	Acute inpatient LOS outliers (>35 days)	Number of in scope overnight separations with length of stay >35 days, reported at KPI #3	Number of in scope overnight separations, reported at KPI #1	
11	Cost per acute inpatient episode (KPI #4)			Constructed as per KPI #4 - see Technical Specifications
12	Cost per day - acute inpatient units	Total expenditure reported for in scope acute units	Total accrued mental health care days reported for in scope acute units, reported at KPI #4	
13	Acute unit(s) - Derived occupancy	Total accrued mental health care days reported for in scope acute units, reported at KPI #4	Number of beds reported for in scope acute inpatient units x 365	
14	Full year cost per acute inpatient bed	Total expenditure reported for in scope acute units	Number of in scope acute inpatient beds	
14a	Av. Annual cost per residential bed	Total expenditure reported for in scope residential units	Number of in scope residential beds	
14b	Same day separations as percent of total acute separations	Number of same day separations	Number of acute separations	
15	Full year cost per direct care ambulatory FTE	Total expenditure reported for in scope ambulatory services	Number of ambulatory services direct care FTE	Not equivalent to average salaries - because costs are total and include non salary and indirect
16	KPI #5 Average treatment days per 3 month period of community care			Constructed as per KPI #5 - see Technical Specifications
17	KPI #6 Average cost per 3 month period of community care			Constructed as per KPI #6 - see Technical Specifications
18	Average cost per community treatment day	Total expenditure/funding reported for in scope ambulatory services	Total number of treatment days, reported at KPI #5	
THEME 3: Productivity and activity of ambulatory services				
		Numerator	Denominator	Notes
19	Av. weekly contacts per direct care FTE	Total service contacts, reported at KPI #5	Total direct care ambulatory FTE x 44	Assumes 44 working weeks per direct care FTE
20	Av. weekly treatment days per direct care FTE (approx = N patients per week per FTE)	Total treatment days, reported at KPI #5	Total direct care ambulatory FTE x 44	Assumes 44 working weeks per direct care FTE. NOTE: This indicator approximates av. number of consumers seen per week per direct care FTE

Supplementary Indicator Specs

Details on how the supplementary indicators were constructed				
All reference numbers link to the numbers in boxes within the indicator charts				
Ref		Numerator	Denominator	Notes
21	Av. number of seen people per years per ambulatory services direct care FTE	Number of people receiving one or more contacts from in scope ambulatory service teams, reported at KPI #7	Total direct care ambulatory FTE	
22	'Assessment only' episodes (1 treatment day) as percent of total 3 month episodes	Number of consumers receiving one treatment day only, reported at KPI #5	Total 3-month periods of care, reported at KPI #5	
THEME 4: Continuity of care				
23	KPI #11 Pre admission community care			Constructed as per KPI #11 - see Technical Specifications
24	KPI #12 Post discharge community care			Constructed as per KPI #12 - see Technical Specifications
25	KPI #1 28-day readmission rate			Constructed as per KPI #1 - see Technical Specifications
26	KPI #5 Average treatment days per 3 month period of community care			Constructed as per KPI #5 - see Technical Specifications
THEME 5: Access to ambulatory care				
27	KPI #7a % target population receiving ambulatory services			Constructed as per KPI #7 - see Technical Specifications
28	Ambulatory services Direct Care FTE per 100,000 population	Number of ambulatory services direct care FTE	Total catchment population for in scope ambulatory services	Same as reference 4 above
29	KPI #10a Area per capita resources - Ambulatory services			Constructed as per KPI #10 - see Technical Specifications
30	Age-specific target group as % of total people seen by ambulatory services	Number of people receiving one or more contacts from in-scope ambulatory services who reside in catchment area and are within age target group, reported at KPI #7	Total number of people receiving one or more contacts from in scope ambulatory service teams, reported at KPI #7	
31	Percent of people seen by ambulatory services who reside external to catchment	Number of people receiving one or more contacts from in-scope ambulatory services who reside external to catchment area, reported at KPI #7	Total number of people receiving one or more contacts from in scope ambulatory service teams, reported at KPI #7	
32	KPI #9 New client index			Constructed as per KPI #9 - see Technical Specifications

Supplementary Indicator Specs

Details on how the supplementary indicators were constructed				
All reference numbers link to the numbers in boxes within the indicator charts				
Ref	Numerator	Denominator	Notes	
THEME 6: Access to acute inpatient care				
33	KPI #7b % target population receiving inpatient services			Constructed as per KPI #7 - see Technical Specifications
34	KPI #10b Area per capita resources - Inpatient services			Constructed as per KPI #10 - see Technical Specifications
35	Acute beds per 100,000 population	Number of in scope acute inpatient beds	Total catchment population for in scope acute inpatient services	Same as reference 5 above
36	KPI #8 Local access to inpatient care (% total area overnight separations managed by your organisation)			Constructed as per KPI #8 - see Technical Specifications
37	Overnight acute separations per 100,000 population from inpatient catchment target population	Total overnight separations by persons in age-specific target population from the organisation catchment, reported at KPI #8	Acute inpatient services age-specific Area catchment population at December 2004, reported at KPI #7	Numerator includes separations from all inpatient services including those not managed by the organisation
38	% target age-group separations from your unit of people who reside outside of inpatient catchment area	Number of target age-group separations from your unit of people who reside outside of inpatient catchment area, reported at KPI #8	Number of separations by target age-group from your unit, reported at KPI #8	
THEME 7: Acute Inpatient casemix - (a) Diagnosis 2006-07				
39A to 39H		Based on diagnostic data submitted by organisations covering separations from in-scope acute inpatient units. For each of the main diagnostic groups, number of separations is expressed as a percentage of total separations.		New data submitted to allow comparison of acute inpatient profiles
39i	Percentage overnight separations included in the data	Total separations reported with a diagnosis	Total overnight separations from in scope acute units as reported at KPI #1	This indicator shows the coverage of diagnostic data submitted by each organisation and provides information about the extent to which the diagnostic profile is representative of total acute inpatient separations for the organisation

Supplementary Indicator Specs

Details on how the supplementary indicators were constructed				
All reference numbers link to the numbers in boxes within the indicator charts				
Ref	Ref	Numerator	Denominator	Notes
THEME 7: Acute Inpatient casemix - (b) HoNOS65+ at admission				
40	Average HONOS65+ scores by item - Group vs National Avg.	New data as submitted by organisations. Group average is average of benchmarking participants. National data taken from AMHOCN Decision Support Tool, and provides average HoNOS65+ scores for older persons admissions to inpatient care (n = 7,147 cases)		New data submitted to allow comparison of acute inpatient profiles
41	Av. HoNOS65+ tota scores at admission	New data as submitted by organisations. National data taken from AMHOCN Decision Support Tool, as described above)		New data submitted to allow comparison of acute inpatient profiles
42	HoNOS65+ scores at admission - % clinically significant	Number of HoNOS65+ items with a score > 2, summed across all 12 scales for all admissions	(Total number of separations included in sample) x 12	New data submitted to allow comparison of acute inpatient profiles. This indicator provides an alternative to Total HoNOS65+ score as an overall measure of casemix severity
43	Indicator removed			
44	Percentage overnight separations with HoNOS65+ Admission data	Total separations reported with HoNOS65+ admission data	Total overnight separations from in scope acute units as reported at KPI #1	This indicator shows the coverage of HoNOS65+ data submitted by each organisation and provides information about the extent to which the HoNOS65+ profile is representative of total acute inpatient separations for the organisation

Supplementary Indicator Specs

Details on how the supplementary indicators were constructed				
All reference numbers link to the numbers in boxes within the indicator charts				
Ref		Numerator	Denominator	Notes
THEME 7: Acute Inpatient casemix - (c) RUG-ADL at admission				
45	Av. RUG-ADL scores at admission	Data as submitted by organisations		
46	Av. RUG-ADL scores at admission - as percent maximum possible score	(Average score on the RUG-ADL) less 4	RUG maximum score less 4	RUG-ADL score range is 4-18.
THEME 8: Ambulatory care casemix - (a) Diagnosis				
47A to 47H		Based on diagnostic data submitted by organisations covering consumers seen by in-scope ambulatory care teams. For each of the main diagnostic groups, number of consumers is expressed as a percentage of total consumers reported with a diagnosis.		New data submitted to allow comparison ambulatory care consumer profiles
47i	Percentage of total persons seen in community included in diagnostic data	Total consumers reported with a diagnosis	Total consumers receiving one or more contacts by in-scope ambulatory care teams, as reported at KPI #7	This indicator shows the coverage of diagnostic data submitted by each organisation and provides information about the extent to which the diagnostic profile is representative of total consumers seen in ambulatory care by the organisation.
THEME 8: Ambulatory care casemix - (b) HoNOS				
48	Average HoNOS65+ scores by item - Group vs National Avg.	New data as submitted by organisations. Group average is average of benchmarking participants. National data taken from AMHOCN Decision Support Tool, and provides average HoNOS65+ scores for older consumers seen in ambulatory, at Admission (n = 14,595 cases)		New data submitted to allow comparison of ambulatory care profiles
49	Av. HoNOS65+ total scores	New data as submitted by organisations. National data taken from AMHOCN Decision Support Tool, as described above)		New data submitted to allow comparison of ambulatory care profiles
50	HoNOS65+ scores - % clinically significant	Number of HoNOS65+ items with a score > 2, summed across all 12 scales for all consumers	(Total number of consumers included in sample) x 12	New data submitted to allow comparison of ambulatory care profiles. This indicator provides an alternative to Total HoNOS65+ score as an overall measure of casemix severity

Supplementary Indicator Specs

Details on how the supplementary indicators were constructed				
All reference numbers link to the numbers in boxes within the indicator charts				
Ref		Numerator	Denominator	Notes
51	Indicator removed			
52	Percentage of total persons seen in community included in HoNOS65+ data	Total consumers reported with HoNOS65+ data	Total consumers receiving one or more contacts by in-scope ambulatory care teams, as reported at KPI #7	This indicator shows the coverage of HoNOS65+ data submitted by each organisation and provides information about the extent to which the HoNOS65+ profile is representative of total consumers seen in ambulatory care by the organisation.

Supplementary Indicator Specs

Details on how the supplementary indicators were constructed				
All reference numbers link to the numbers in boxes within the indicator charts				
Ref		Numerator	Denominator	Notes
THEME 9: Depression - Acute Inpatient separations				
53	Depression as percent total separations from in scope acute units	Number of separations reported with discharge diagnosis of depression	Total number of separations from in-scope acute inpatient units, 2005-06	Depression' cases restricted to the following ICD 10 codes: F32 Depressive Episode F33 Recurrent depressive disorder F34 Persistent mood (affective) disorders; F38 Other mood (affective) disorders F39 Unspecified mood (affective) disorder
54	KPI #1 28-day readmission rate	Data as submitted by organisations		Constructed as per KPI #1 - see Technical Specifications
55	KPI #3 Acute inpatient length of stay	Data as submitted by organisations		Constructed as per KPI #3 - see Technical Specifications. Based on in scope separations.
55a	Median length of stay	Data as submitted by organisations		Based on in scope separations.
56	KPI #11 Pre admission community care	Data as submitted by organisations		Constructed as per KPI #11 - see Technical Specifications
57	KPI #12 Post discharge community care	Data as submitted by organisations		Constructed as per KPI #12 - see Technical Specifications
THEME 10: Dementia - Acute Inpatient separations				
58	Dementia as percent total separations from in scope acute units	Number of separations reported with discharge diagnosis of dementia	Total number of separations from in-scope acute inpatient units, 2005-06	Dementia' cases restricted to the following ICD 10 codes: F00 Dementia in Alzheimer's disease F01 Vascular dementia F02 Dementia in other diseases classified elsewhere F03 Unspecified dementia
59	KPI #1 28-day readmission rate	Data as submitted by organisations		Constructed as per KPI #1 - see Technical Specifications
60	KPI #3 Acute inpatient length of stay	Data as submitted by organisations		Constructed as per KPI #3 - see Technical Specifications. Based on in scope separations.
60a	Median length of stay	Data as submitted by organisations		Based on in scope separations.
61	KPI #11 Pre admission community care	Data as submitted by organisations		Constructed as per KPI #11 - see Technical Specifications
62	KPI #12 Post discharge community care	Data as submitted by organisations		Constructed as per KPI #12 - see Technical Specifications