

National Mental Health Benchmarking Project

An Australian Government funded initiative



**Adding Substance to the Myths: Responsiveness,
Appropriateness and Effectiveness According to the CAMHS
Discharges Project**

Child and Adolescent Mental Health Services Forum

Version 1.0

Australian Mental Health Outcomes and Classification Network

October 2008

Peter Brann, PhD

Eastern Health CAMHS, and the Department of Psychological Medicine, Monash University
with members of the CAMHS Benchmarking Forum



AMHOCN

"Sharing Information to
Improve Outcomes"

The “Discharges Project” was initiated by the Child and Adolescent Mental Health Services (CAMHS) Forum of the National Mental Health Benchmarking Project. This document summarizes the key results and findings from this project.

The National Benchmarking Forum allowed for the comparison of the tentative National Key Performance indicators. These indicators raised a number of significant questions about the nature of the CAMHS target population and the comparability of models of care in operation. Initially, the CAMHS forum committed itself to conducting an examination of all clients discharged from ambulatory services within the period April-June 2006 inclusive. This additional project produced an array of challenging data and engaged the services in a number of quality improvement activities as well as debating the meaning of the obtained data. The value of this approach was underlined with the forum agreeing to repeat the exercise with discharges in the April-June 2007 quarter. The second survey added additional information pertaining to contact time and the Strength and Difficulties Questionnaire. In addition, the members of the forum with in-patient units agreed to examine all discharges from in-patient settings for the same period.

All clients discharged in the reference periods were included irrespective of missing data. Unless specified, 2006 and 2007 data has been aggregated. Average of the dwarves is a weighted average. The CAMHS that participated were not chosen at random; they were nominated by each jurisdiction as services with a history and willingness to engage in dialogue informed by data. Nonetheless, it is believed that the data obtained is valuable and will be of use to CAMHS across Australia as a reference point for their own operations.

This data belongs to the services engaged in the CAMHS Benchmarking Forum and should not be used without appropriate citation. This data will be prepared for further publication by members of the forum throughout 2009.

CAMHS National Benchmarking Project

Ambulatory Discharges Project

Data from all clients discharged from community teams April-June 2006 and April-June 2007

Descriptives

Number of Discharges

Count of Org
Year

	Org A	Org E	Org C	Org B	Org D	Org F	Grand Total
2006	387	49	283	114	26	130	989
2007	723	57	315	143	18	86	1342
Grand Total	1110	106	598	257	44	216	2331

Gender

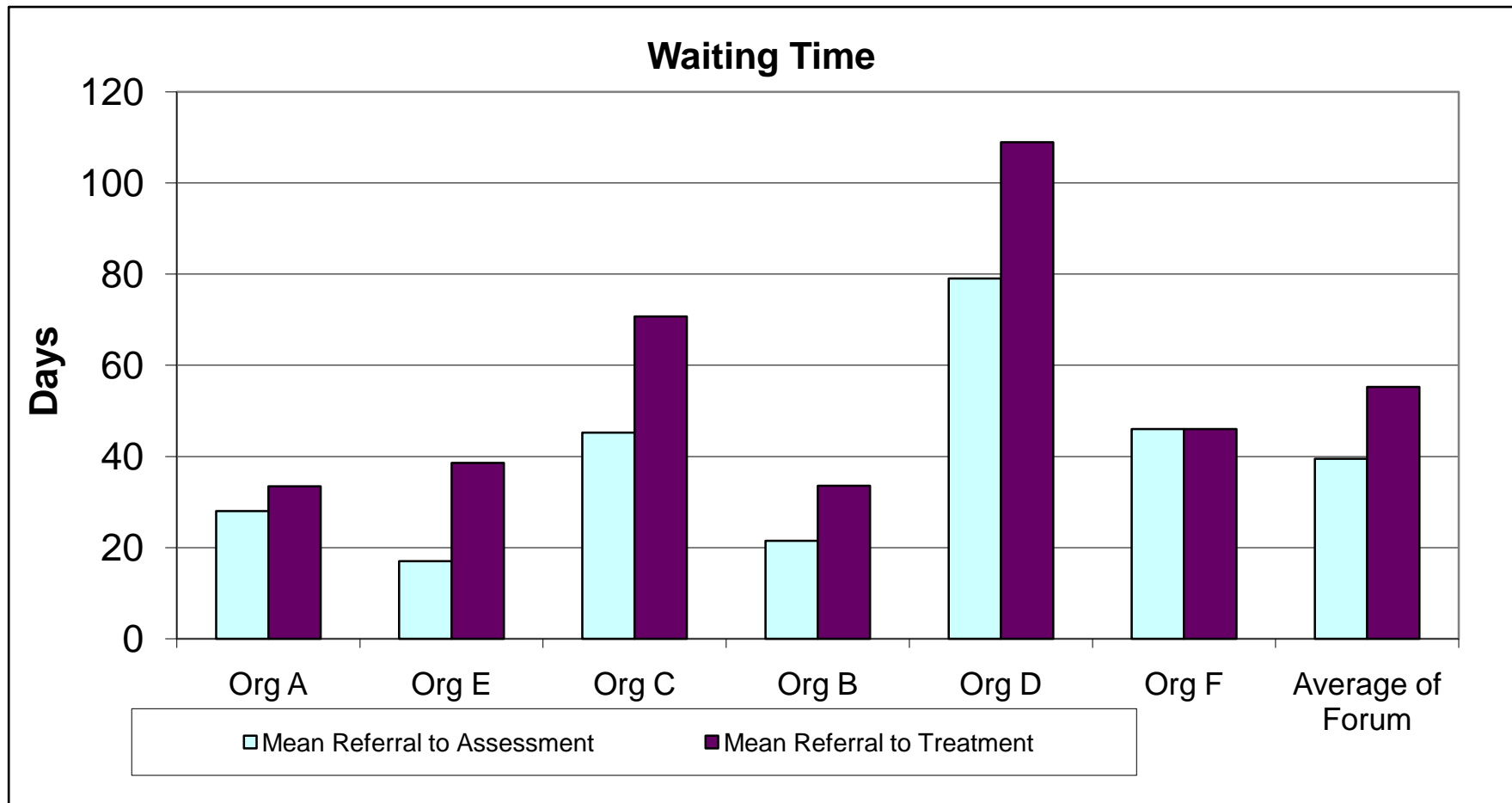
	Org A	Org E	Org C	Org B	Org D	Org F	Grand Total
Female	45.23%	54.72%	45.82%	54.47%	45.45%	49.54%	47.23%
Male	54.77%	45.28%	54.18%	45.53%	54.55%	50.46%	52.77%

Data	Org Year	Org A	Org E	Org C	Org B	Org D	Org F	Grand Total
Average Age at assessment	2006	9.8	13.9	11.3	11.9	12.3	13.2	11.2
	2007	9.5	14.3	11.0	11.2	11.0	12.1	10.4
Min Age at assessment	2006	1.2	6.7	0.0	0.5	7.4	0.8	0.0
	2007	0.2	5.8	0.4	0.3	4.6	0.3	0.2
Max Age at assessment	2006	17.3	17.5	19.6	18.4	17.6	17.9	19.6
	2007	20.6	17.9	17.7	18.0	17.4	17.9	20.6
Overall Mean Age		9.6	14.1	11.1	11.5	11.7	12.8	10.7
Overall Min Age		0.2	5.8	0.0	0.3	4.6	0.3	0.0
Overall Max Age		20.6	17.9	19.6	18.4	17.6	17.9	20.6

KPI14a Waiting Times

Year of data collection	Org A	Org E	Org C	Org B	Org D	Org F	Grand Total	Average of Forum
2006 Count	387	49	283	114	25	130	988	
2007 Count	717	57	315	143	18	86	1336	
2006 Max Days Ref to Assess	155	62	532	132	216	239	532	
2007 Max Days Ref to Assess	765	121	307	173	365	222	765	
2006 Max Ref to Treat	155	96	1111	244	337	239	1111	
2007 Max Ref to Treat	765	224	358	173	407	222	765	
2006 Avg days Ref to Assess	28.9	16.7	40.0	22.6	66.7	50.7	34.6	37.6
2007 Avg days Ref to Assess	28.0	17.3	49.9	20.6	96.2	39.0	33.3	41.9
2006 Avg days Ref to Treat	28.9	30.2	57.2	41.7	100.3	50.7	43.1	51.5
2007 Avg days Ref to Treat	35.9	45.8	82.8	27.1	120.1	39.0	47.8	58.5

	Org A	Org E	Org C	Org B	Org D	Org F	Grand Total	Average of Forum
Overall Count	1104	106	598	257	43	216	2324	
Overall Max Ref to Assess	765	121	532	173	365	239	765	
Overall Max Ref to Treat	765	224	1111	244	407	239	1111	
Median Referral to Assessment	18.5	9.0	21.0	14.0	55.0	23.5	19.0	23.5
Median Referral to Treatment	25	33	43	22	75	24	29	36.8
Mean Referral to Assessment	28.0	17.0	45.2	21.5	79.0	46.0	34.0	39.5
Mean Referral to Treatment	33.5	38.6	70.7	33.6	109.0	46.0	45.8	55.2



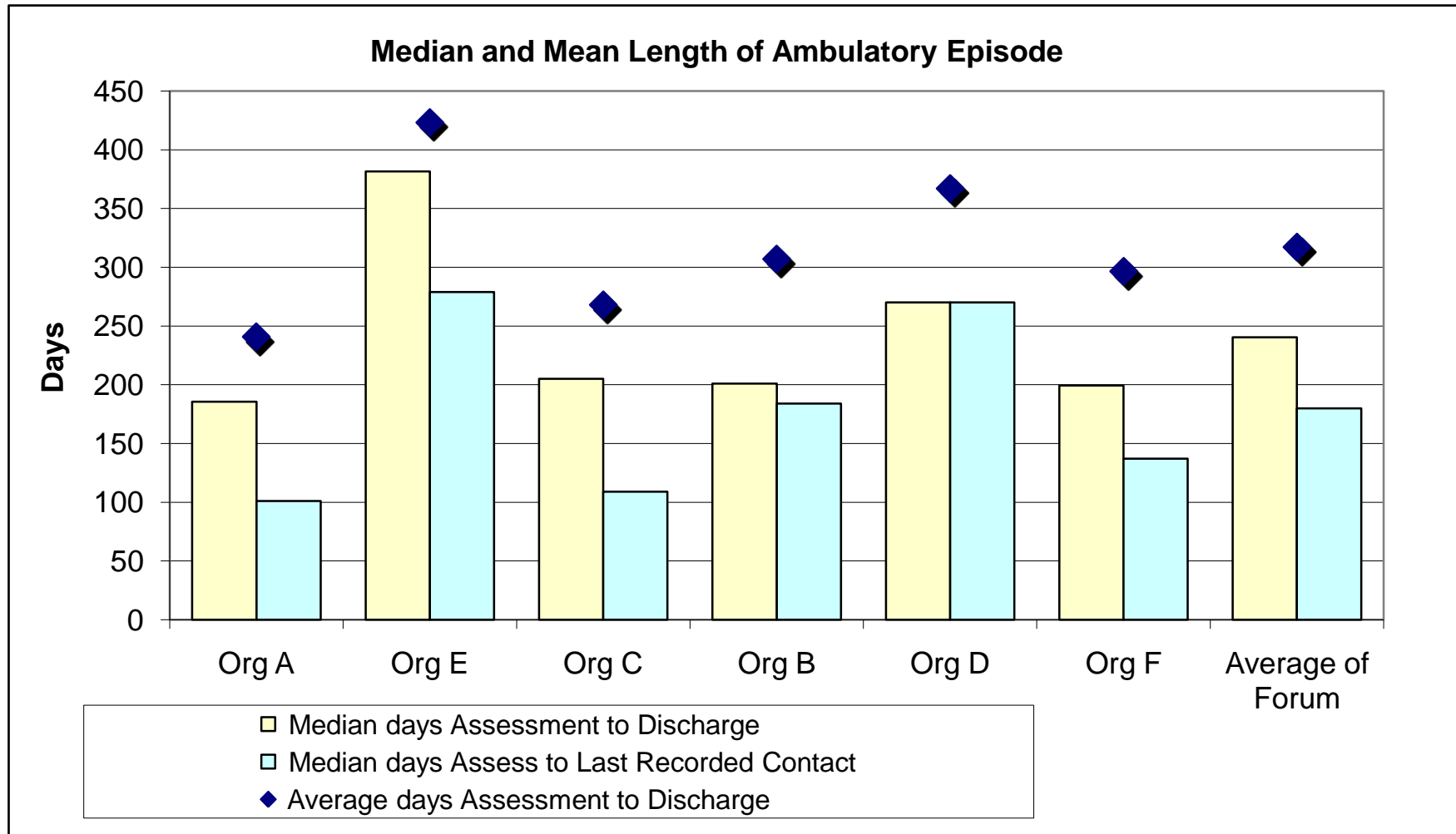
NB: Some CAMHS have a process whereby assessment leads to a separate waitlist for treatment. This graph shows the number of days from referral to assessment and referral to treatment. There is substantial variability with the longest wait being four times the shortest wait.

From the preceding tables, it can be seen that while the average wait to assessment has only clearly increased for 2 CAMHS from 2006 to 2007, the average wait for treatment increased for all but 2 CAMHS.

KPI14b Length of ambulatory episode

Data	Year of data collection	Org A	Org E	Org C	Org B	Org D	Org F	Grand Total	Average of Forum
	Max days Assessment to Discharge 2006		488	1665	1087	1247	1492	1536	1665
Max days Assessment to Discharge 2007		1493	1116	1443	4458	1212	995	4458	1786
Max days Assessment to Last recorded contact 2006		487	1083	981	1170	1426	1460	1460	1101
Max days Assessment to Last recorded contact 2007		1444	1062	1443	4430	1081	840	4430	1717
Average days Assessment to Discharge 2006		202.0	414.3	219.3	289.1	383.2	296.2	244.5	300.7
Average days Assessment to Discharge 2007		261.2	430.5	311.7	321.2	344.4	296.6	290.2	327.6
Average days Assessment to Last recorded contact 2006		198.2	347.8	131.5	258.9	363.4	242.4	202.9	257.0
Average days Assessment to Last recorded contact 2007		164.9	313.9	228.2	286.7	315.0	227.3	205.0	256.0

	Org A	Org E	Org C	Org B	Org D	Org F	Grand Total	Average of Forum
Max days Assessment to Discharge	1493	1665	1443	4458	1492	1536	4458	2015
Max days Assessment to Last recorded contact	1444	1083	1443	4430	1426	1460	4430	1881
Median days Assessment to Discharge	186	382	205	201	270	200	203	240
Median days Assess to Last Recorded Contact	101	279	109	184	270	137	128	180
Average days Assessment to Discharge	240.8	423.0	268.0	307.0	367.0	296.4	270.9	317.0
Average days Assess to Last recorded contact	176.9	329.6	182.4	274.2	343.1	236.2	204.2	257.1



NB The difference between discharge and last recorded contact was thought to provide some indication of the delay in producing discharge documentation.

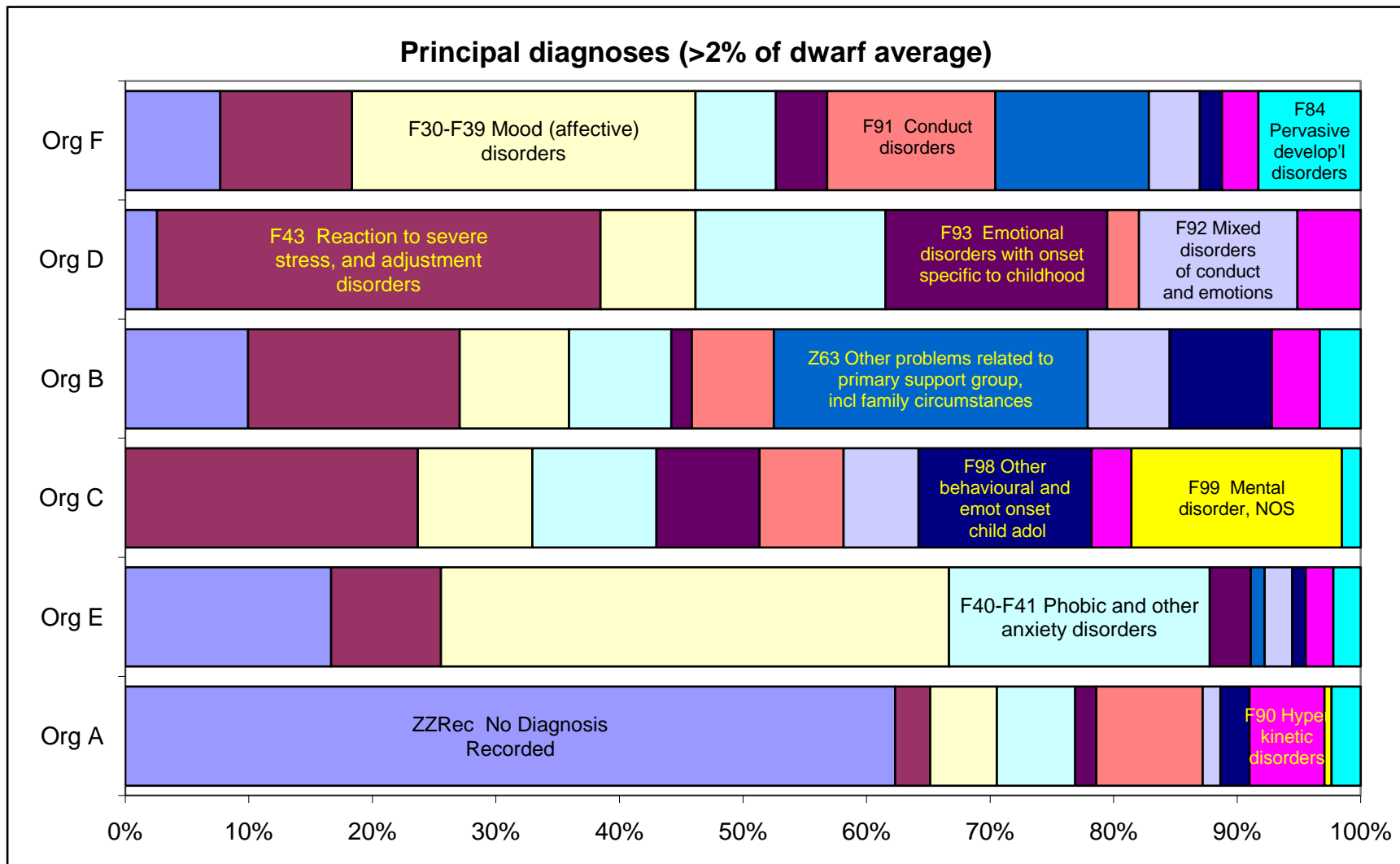
**KPI 14 c: Principal diagnosis
2006 and 2007 combined**

NB Pink and green highlight indicate 50% below, and above the Org average

Principal DX (ICD-10AM Sections-No decimals)	Org A	Org E	Org C	Org B	Org D	Org F	Grand Total	Average of Forum
F00-F09 Organic including symptomatic mental disorders	0.00%	0.00%	0.00%	0.39%	0.00%	0.00%	0.04%	0.06%
F10-F19 Mental and behavioural disorders due to psychoact	1.35%	0.94%	0.33%	0.78%	0.00%	1.85%	1.03%	0.88%
F20-F29 Schizophrenia, schizotypal and delusional disorders	0.18%	0.94%	0.17%	0.00%	0.00%	4.63%	0.60%	0.99%
F30-F39 Mood (affective) disorders	5.14%	34.91%	8.19%	6.23%	6.82%	21.76%	8.97%	13.84%
F40-F41 Phobic and other anxiety disorders	6.04%	17.92%	8.86%	5.84%	13.64%	5.09%	7.34%	9.56%
F42 Obsessive-compulsive disorder	0.99%	3.77%	1.17%	0.78%	0.00%	2.78%	1.29%	1.58%
F43 Reaction to severe stress, and adjustment disorders	2.70%	7.55%	20.90%	12.06%	31.82%	8.33%	9.70%	13.89%
F44 Dissociative [conversion] disorders	0.09%	0.00%	0.00%	0.00%	0.00%	0.00%	0.04%	0.02%
F45 Somatoform disorders	0.00%	0.94%	0.00%	0.39%	2.27%	0.00%	0.13%	0.60%
F50 Eating disorders	0.63%	1.89%	0.17%	2.33%	0.00%	0.93%	0.77%	0.99%
F51, F54, F59 Nonorganic sleep, psych factors assoc with c	1.08%	0.94%	0.67%	0.39%	0.00%	0.00%	0.77%	0.51%
F52 Sexual dysfunction, not caused by organic disorder or c	0.00%	0.00%	0.17%	0.00%	0.00%	0.00%	0.04%	0.03%
F60 Specific personality disorders	0.00%	0.00%	0.00%	0.39%	0.00%	0.46%	0.09%	0.14%
F63 Habit and impulse disorders	0.00%	0.94%	0.17%	1.56%	0.00%	0.00%	0.26%	0.44%
F70-F79 Mental Retardation	0.09%	0.00%	0.67%	0.39%	0.00%	0.00%	0.26%	0.19%
F80 Specific developmental disorders of speech and langua	0.00%	0.94%	0.17%	0.39%	2.27%	0.46%	0.21%	0.71%
F81 Specific developmental disorders of scholastic skills	0.09%	0.94%	0.33%	0.00%	0.00%	0.93%	0.26%	0.38%
F83, F88, F89 Mixed specific, other or unspecified developn	0.00%	0.00%	0.67%	0.39%	4.55%	0.46%	0.34%	1.01%
F84 Pervasive developmental disorders	2.25%	1.89%	1.34%	2.33%	0.00%	6.48%	2.36%	2.38%
F90 Hyperkinetic disorders	5.77%	1.89%	2.84%	2.72%	4.55%	2.31%	4.16%	3.35%
F91 Conduct disorders	8.20%	0.00%	6.02%	4.67%	2.27%	10.65%	6.99%	5.30%
F92 Mixed disorders of conduct and emotions	1.35%	1.89%	5.35%	4.67%	11.36%	3.24%	3.13%	4.64%
F93 Emotional disorders with onset specific to childhood	1.62%	2.83%	7.36%	1.17%	15.91%	3.24%	3.52%	5.35%
F94 Disorders of social functioning with onset specific to chi	0.36%	0.00%	1.67%	3.11%	0.00%	0.93%	1.03%	1.01%
F95 Tic disorders	0.00%	0.00%	0.00%	0.78%	0.00%	0.46%	0.13%	0.21%
F98 Other behavioural and emotional disorders with onset us	2.25%	0.94%	12.37%	5.84%	0.00%	1.39%	5.06%	3.80%
F99 Mental disorder, not otherwise specified	0.54%	0.00%	15.05%	0.00%	0.00%	0.00%	4.12%	2.60%
T74 Maltreatment syndromes	0.00%	0.00%	2.84%	0.00%	0.00%	0.00%	0.73%	0.47%
Z04 General Medical Condition	0.00%	0.00%	0.00%	7.39%	0.00%	0.00%	0.82%	1.23%
Z55 Problems related to education and literacy	0.00%	0.00%	0.84%	0.39%	0.00%	0.46%	0.30%	0.28%
Z60 Problems related to social environment	0.00%	0.00%	0.00%	3.50%	2.27%	0.93%	0.51%	1.12%
Z61 Problems related to negative life events in childhood	0.00%	0.00%	0.67%	2.72%	0.00%	5.09%	0.94%	1.41%

CAMHS National Benchmarking Forum 2008

Z62 Other problems related to upbringing	0.00%	0.00%	1.00%	2.72%	0.00%	0.00%	0.56%	0.62%
Z63 Other problems related to primary support group, including	0.00%	0.94%	0.00%	17.90%	0.00%	9.72%	2.92%	4.76%
Z81, Z91 Family history of mental or behavioural disorders or	0.00%	0.94%	0.00%	0.78%	0.00%	0.46%	0.17%	0.36%
ZZNon Non-psychiatric diagnosis	0.00%	1.89%	0.00%	0.00%	0.00%	0.93%	0.17%	0.47%
ZZRec No Diagnosis Recorded	59.28%	14.15%	0.00%	7.00%	2.27%	6.02%	30.24%	14.79%
Grand Total	100.00%	100.00%	100.00%	100.00%	100.00%	100.00%	100.00%	100.00%



NB This graph shows the principal diagnosis by Org only where the average of all the Forum was >2%.
 The variability stimulated much discussion of the target group of CAMHS and the value of diagnosis.

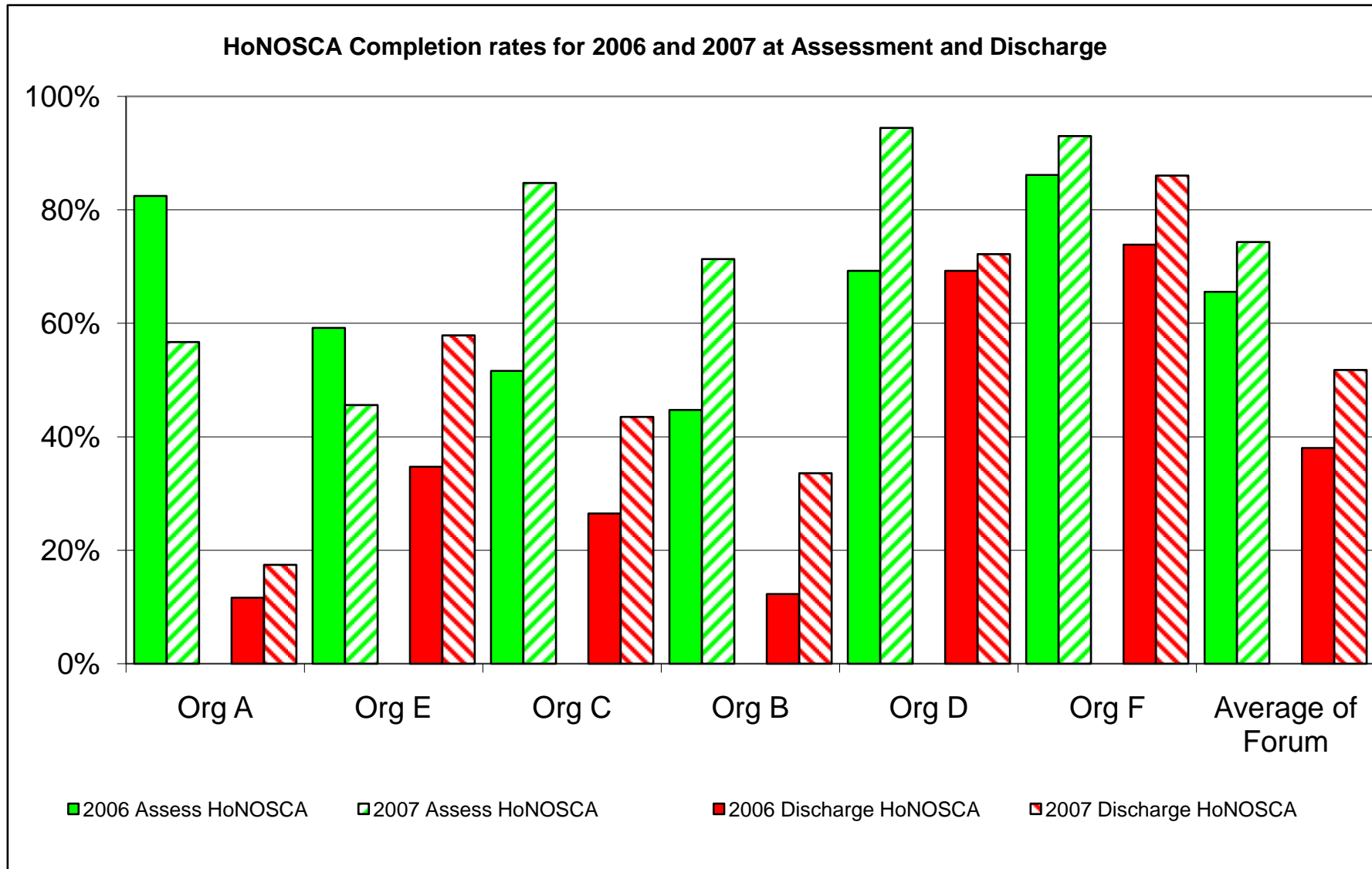
KPI 14 d: HoNOSCA profile

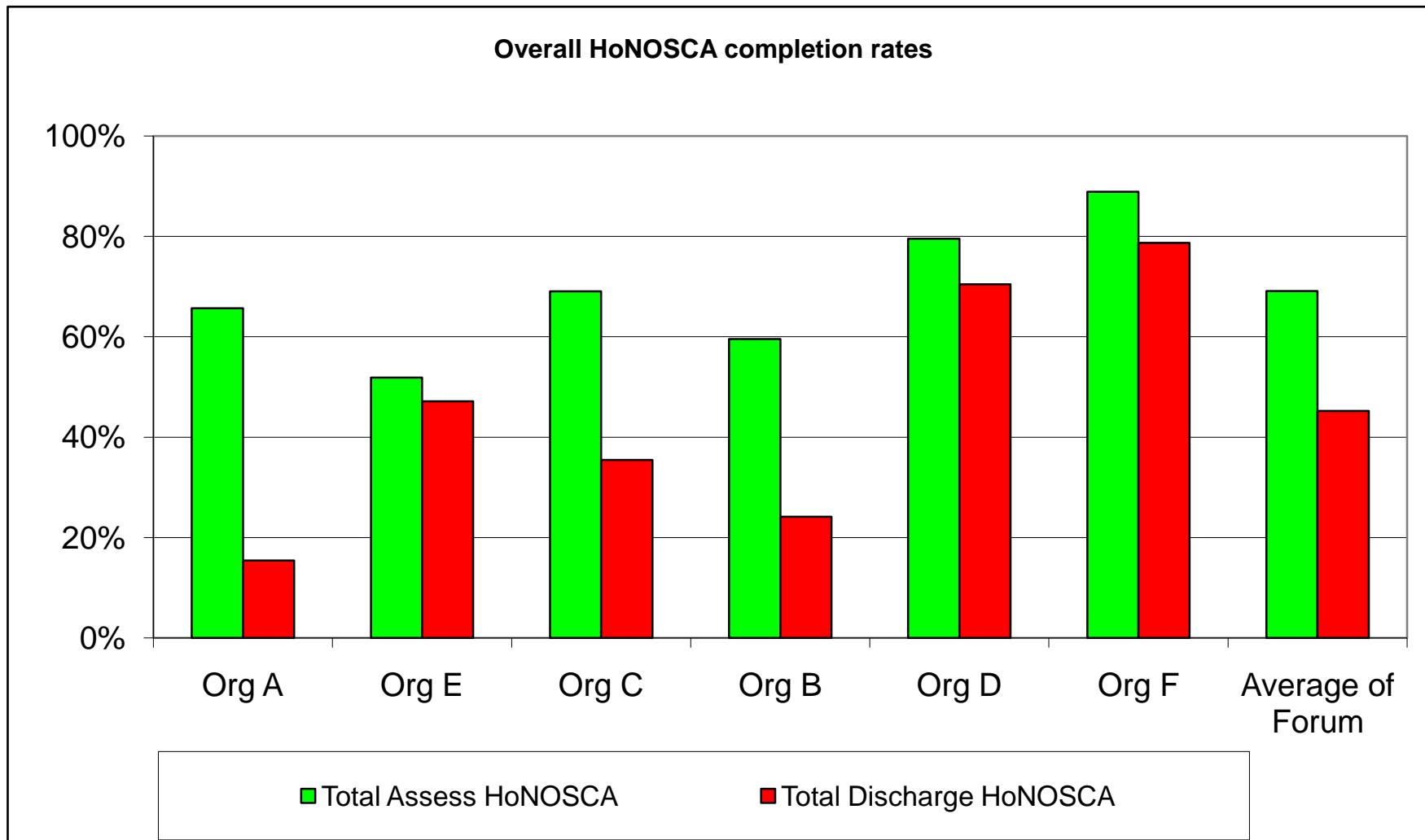
HoNOSCA Total Scores
Numbers

Org	2006 Assess HoNOSCA	2007 Assess HoNOSCA	Total Assess HoNOSCA	2006 Discharge HoNOSCA	2007 Discharge HoNOSCA	Total Discharge HoNOSCA	2006 client count	2007 client count	Total client count
Org A	319	410	729	45	126	171	387	723	1110
Org E	29	26	55	17	33	50	49	57	106
Org C	146	267	413	75	137	212	283	315	598
Org B	51	102	153	14	48	62	114	143	257
Org D	18	17	35	18	13	31	26	18	44
Org F	112	80	192	96	74	170	130	86	216
Grand Total	675	902	1577	265	431	696	989	1342	2331

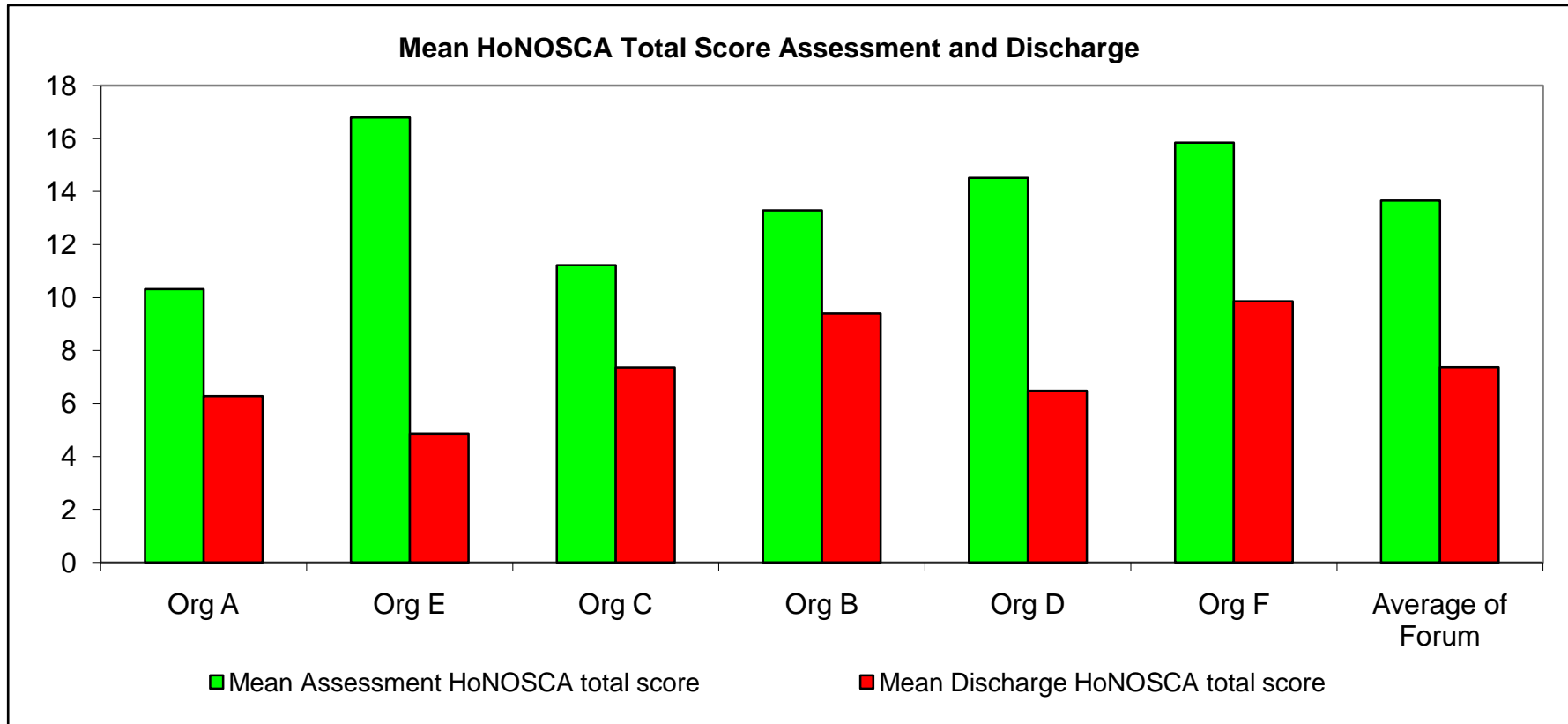
Completion Rates %

Org	2006 Assess HoNOSCA	2007 Assess HoNOSCA	Total Assess HoNOSCA	2006 Discharge HoNOSCA	2007 Discharge HoNOSCA	Total Discharge HoNOSCA
Org A	82%	57%	66%	12%	17%	15%
Org E	59%	46%	52%	35%	58%	47%
Org C	52%	85%	69%	27%	43%	35%
Org B	45%	71%	60%	12%	34%	24%
Org D	69%	94%	80%	69%	72%	70%
Org F	86%	93%	89%	74%	86%	79%
Grand Total	68%	67%	68%	27%	32%	30%
Average of Forum	66%	74%	69%	38%	52%	45%



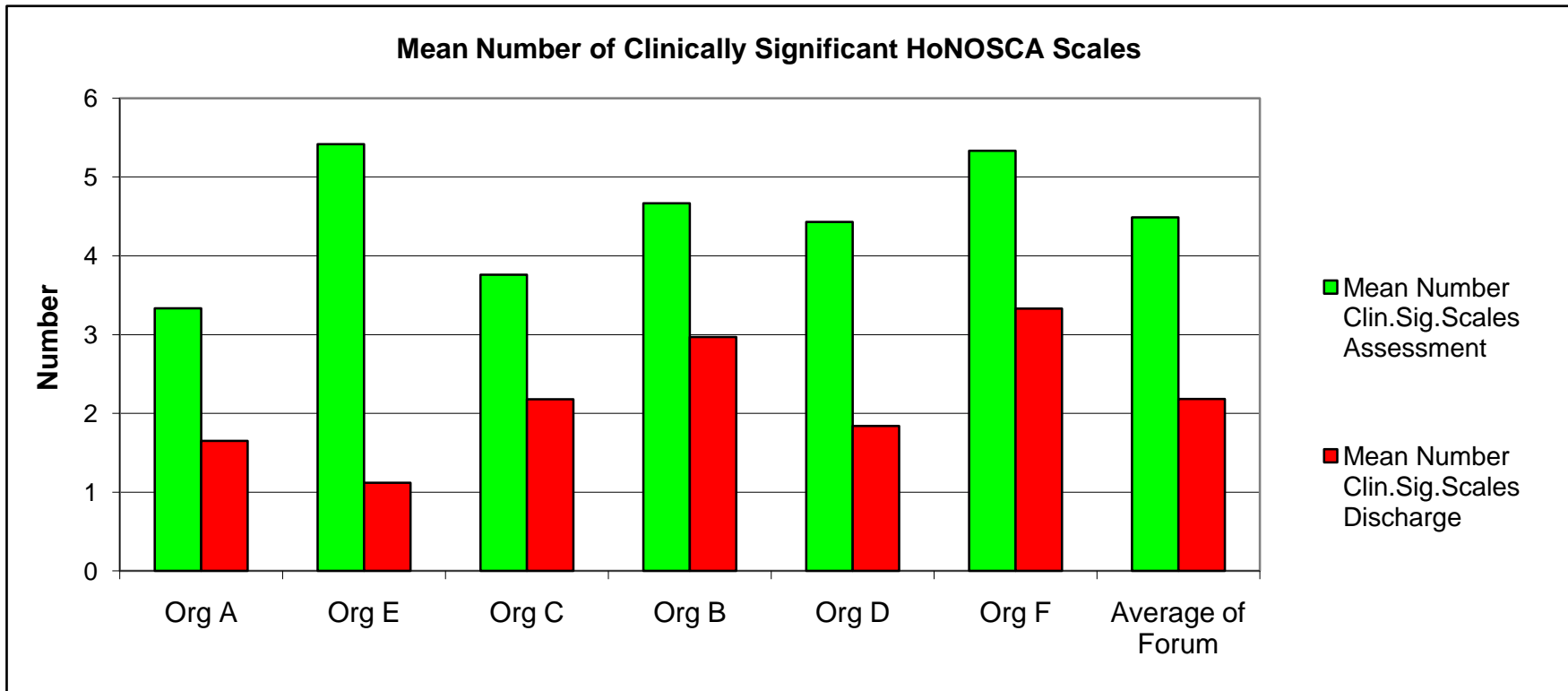


Year	Org A	Org E	Org C	Org B	Org D	Org F	Grand Total	Average of Forum
Mean HoNOSCA total score Assessment 2006	11.0	17.1	11.2	12.9	13.5	16.1	12.4	13.6
Mean HoNOSCA total score Assessment 2007	9.8	16.5	11.2	13.5	15.6	15.6	11.4	13.7
Mean HoNOSCA total score Discharge 2006	7.1	5.1	6.5	7.1	5.5	10.7	8.0	7.0
Mean HoNOSCA total score Discharge 2007	6.0	4.7	7.8	10.1	7.8	8.8	7.5	7.6
Mean Assessment HoNOSCA total score	10.3	16.8	11.2	13.3	14.5	15.8	11.8	13.7
Mean Discharge HoNOSCA total score	6.3	4.9	7.4	9.4	6.5	9.9	7.7	7.4



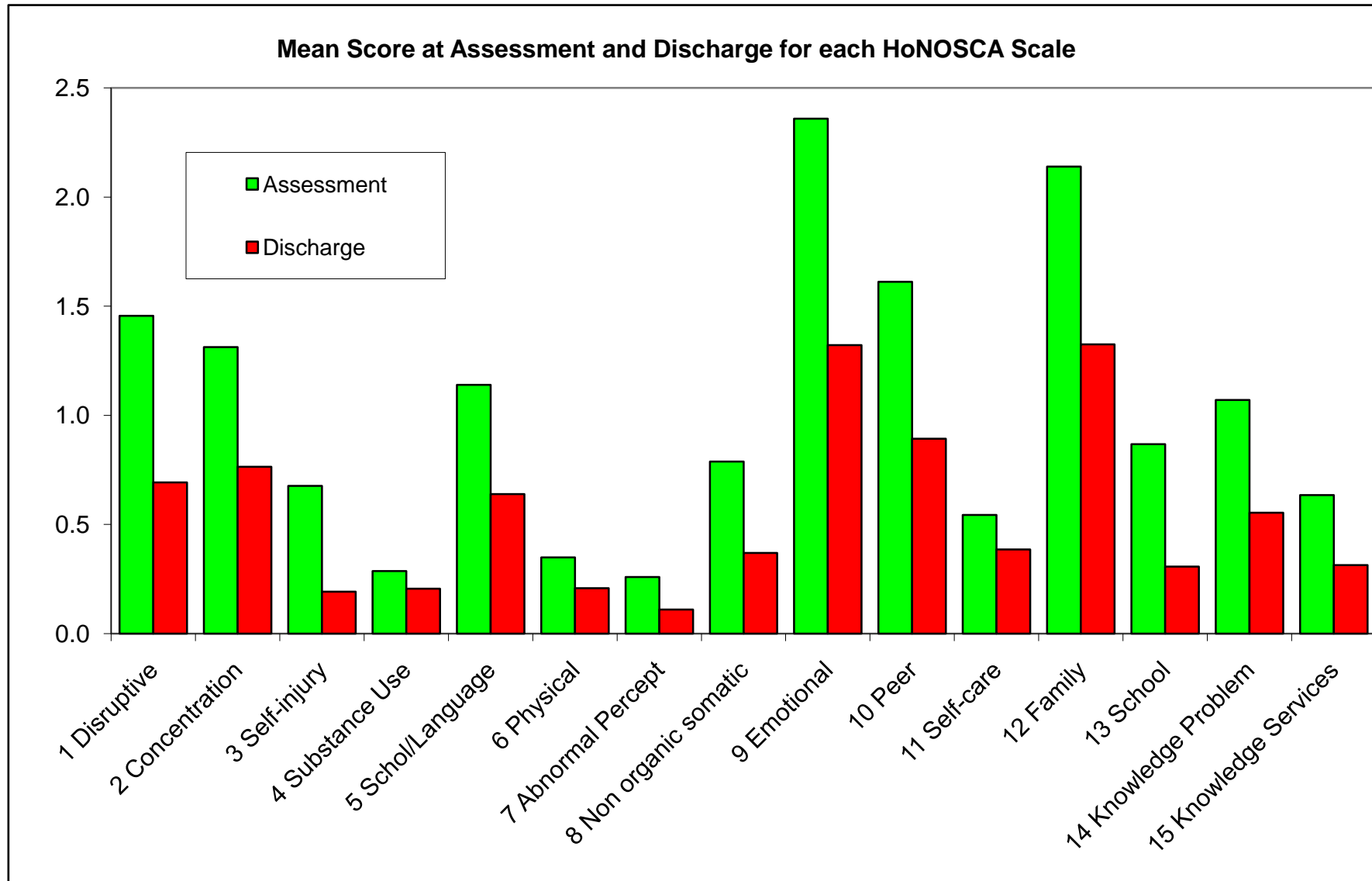
Number of HoNOSCA Scales reaching clinical significance

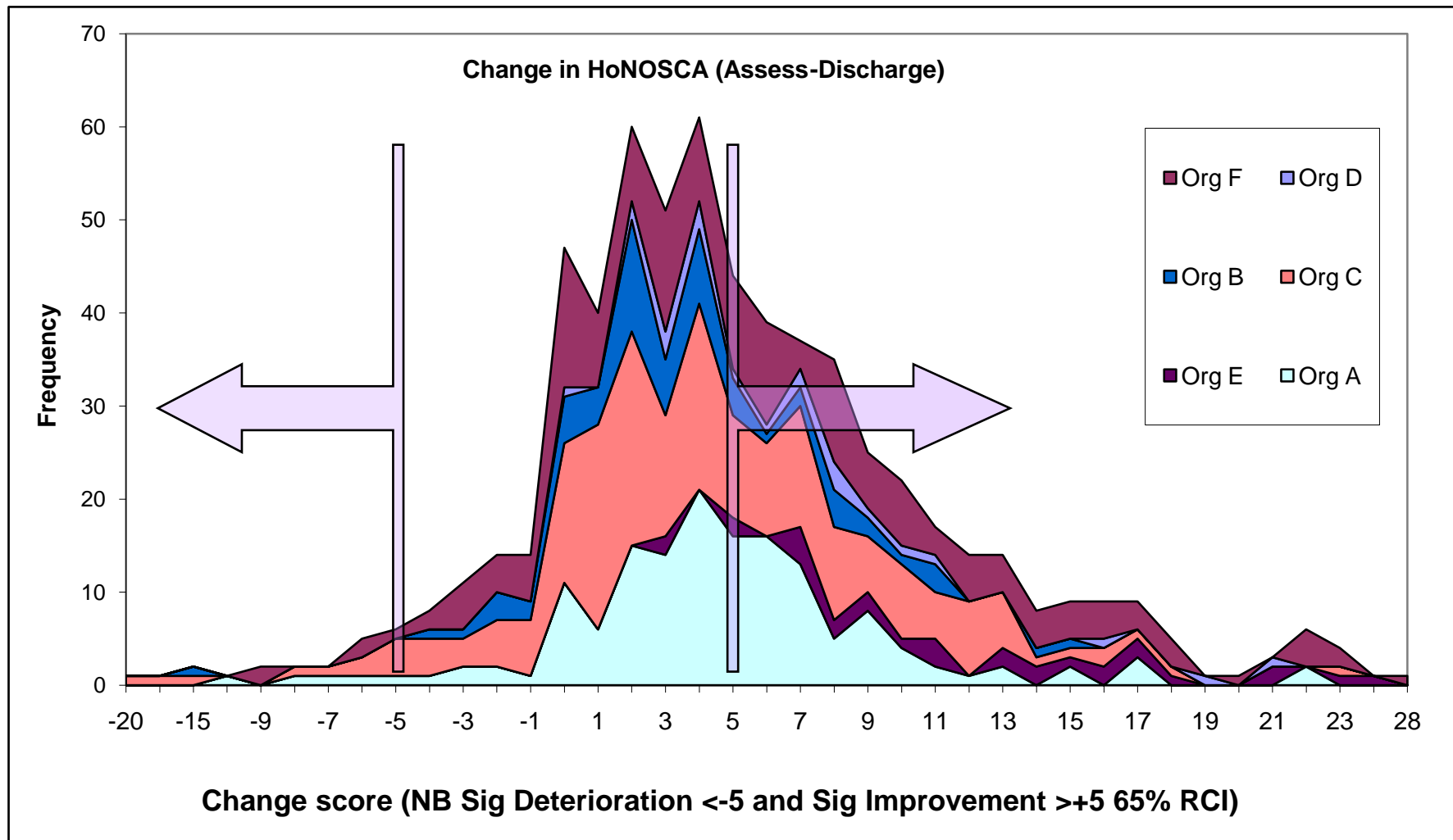
	Org A	Org E	Org C	Org B	Org D	Org F	Grand Total	Average of Forum
Mean Number Clin. Sig.Scales Assessment 2006	3.3	5.6	3.7	4.5	4.0	5.5	4.0	4.4
Mean Number Clin. Sig.Scales Discharge 2006	1.8	1.2	1.8	1.6	1.7	3.7	2.4	2.0
Mean Number Clin. Sig.Scales Assessment 2007	3.3	5.3	3.8	4.7	4.9	5.2	3.9	4.5
Mean Number Clin. Sig.Scales Discharge 2007	1.6	1.1	2.4	3.4	2.1	2.9	2.2	2.2
Mean Number Clin.Sig.Scales Assessment	3.3	5.4	3.8	4.7	4.4	5.3	3.9	4.5
Mean Number Clin.Sig.Scales Discharge	1.6	1.1	2.2	3.0	1.8	3.3	2.3	2.2



NB Pink and green highlight indicate 50% below, and above the Org average

Mean Scores for HoNOSCA scales at Assessment	Org A	Org E	Org C	Org B	Org D	Org F	Grand Total	Average of Forum
Scale 1 (Disruptive)	1.5	1.5	1.3	1.4	1.5	1.5	1.5	1.5
Scale 2 (Concentration)	1.2	1.7	1.0	1.2	1.4	1.3	1.2	1.3
Scale 3 (Self-injury)	0.3	0.9	0.4	0.6	0.9	1.0	0.5	0.7
Scale 4 (Substance Use)	0.1	0.3	0.2	0.4	0.2	0.5	0.2	0.3
Scale 5 (Schol/Language)	0.6	1.4	0.8	1.1	1.7	1.3	0.8	1.1
Scale 6 (Physical)	0.3	0.7	0.2	0.3	0.3	0.4	0.3	0.3
Scale 7 (Abnormal Percept)	0.1	0.5	0.1	0.2	0.3	0.4	0.2	0.3
Scale 8 (Non organic somatic)	0.8	1.2	0.7	0.5	0.7	0.8	0.7	0.8
Scale 9 (Emotional)	1.8	2.7	2.2	2.5	2.3	2.6	2.1	2.4
Scale 10 (Peer)	1.2	1.8	1.2	1.8	1.9	1.8	1.4	1.6
Scale 11 (Self-care)	0.4	0.5	0.4	0.6	0.5	0.8	0.5	0.5
Scale 12 (Family)	1.8	2.2	2.1	2.3	2.0	2.6	2.0	2.1
Scale 13 (School)	0.4	1.5	0.7	0.6	0.9	1.1	0.6	0.9
Scale 14 Knowledge Problem)	1.0	1.3	0.8	0.8	1.3	1.3	1.0	1.1
Scale 15 (Knowledge Services)	0.3	0.7	0.6	0.4	1.0	0.7	0.5	0.6
Mean Scores for HoNOSCA scales at Discharge	Org A	Org E	Org C	Org B	Org D	Org F		
Scale 1 (Disruptive)	0.8	0.5	0.8	0.7	0.5	0.9	0.8	0.7
Scale 2 (Concentration)	0.7	0.6	0.7	1.0	0.7	0.9	0.8	0.8
Scale 3 (Self-injury)	0.2	0.1	0.1	0.2	0.2	0.3	0.2	0.2
Scale 4 (Substance Use)	0.2	0.2	0.1	0.3	0.0	0.4	0.2	0.2
Scale 5 (Schol/Language)	0.4	0.3	0.6	1.0	0.7	0.8	0.6	0.6
Scale 6 (Physical)	0.2	0.2	0.1	0.3	0.2	0.2	0.2	0.2
Scale 7 (Abnormal Percept)	0.1	0.0	0.1	0.3	0.0	0.1	0.1	0.1
Scale 8 (Non organic somatic)	0.4	0.3	0.4	0.5	0.4	0.3	0.4	0.4
Scale 9 (Emotional)	1.1	0.9	1.3	1.6	1.2	1.8	1.4	1.3
Scale 10 (Peer)	0.6	0.6	0.8	1.2	0.9	1.3	0.9	0.9
Scale 11 (Self-care)	0.2	0.1	0.4	0.6	0.5	0.6	0.4	0.4
Scale 12 (Family)	1.2	0.9	1.4	1.6	1.1	1.8	1.4	1.3
Scale 13 (School)	0.3	0.1	0.5	0.2	0.2	0.6	0.4	0.3
Scale 14 Knowledge Problem)	0.4	0.5	0.4	0.6	0.9	0.6	0.5	0.6
Scale 15 (Knowledge Services)	0.2	0.2	0.3	0.2	0.5	0.4	0.3	0.3





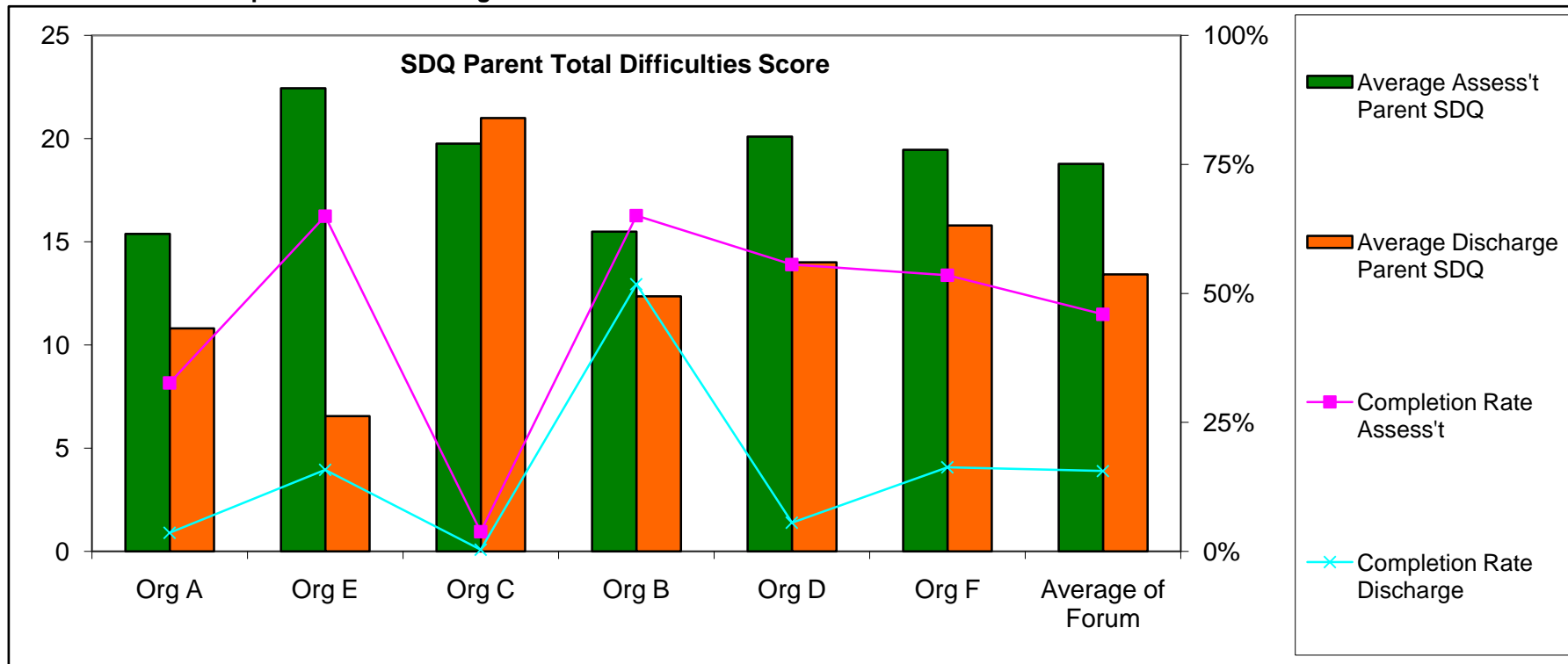
	Org A	Org E	Org C	Org B	Org D	Org F	Grand Total
Percentage of Matched Pairs	14%	28%	34%	24%	50%	74%	27%
Grand Total	1110	106	598	257	44	216	2331

KPI 14 e: SDQ profile

SDQ parent Total Scores

NB Only 2007 data collected. Not matched pairs: All valid records included

Org	Org A	Org E	Org C	Org B	Org D	Org F	Grand Total	Average of Forum
Count Parent Assessment SDQ	236	37	12	93	10	46	434	
Average Assess't Parent SDQ	15.4	22.4	19.8	15.5	20.1	19.5	16.7	18.8
Count Discharge Parent SDQ	26	9	1	74	1	14	125	
Average Discharge Parent SDQ	10.8	6.6	21.0	12.4	14.0	15.8	12.1	13.4
Count clients	723	57	315	143	18	86	1342	
Completion Rate Assess't	33%	65%	4%	65%	56%	53%	32%	46%
Completion Rate Discharge	4%	16%	0%	52%	6%	16%	9%	16%

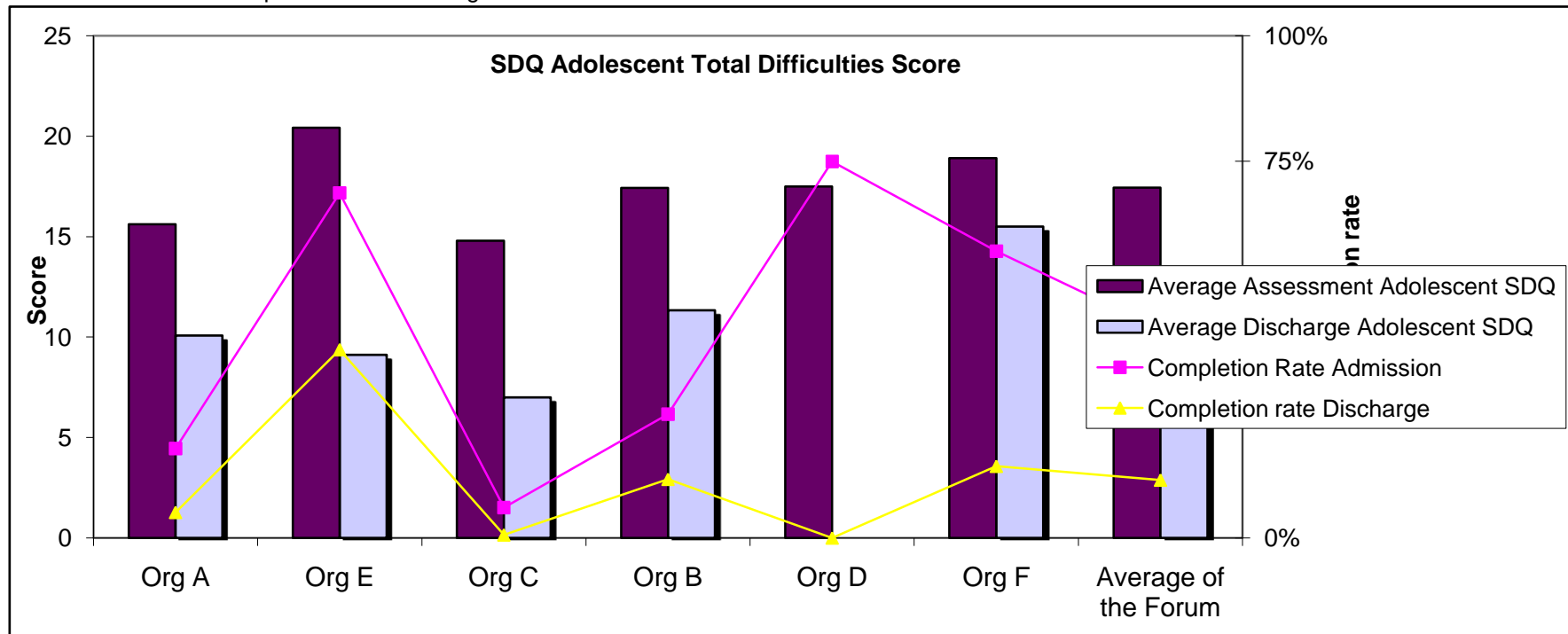


SDQ Adolescent Total Scores

NB Only 2007 records collected. Not matched pairs: All valid records included

Only includes those aged 11-17 at episode start

	Org A	Org E	Org C	Org B	Org D	Org F	Grand Total	Average of the Forum
Count Assessment Adolescent SDQ	49	33	10	19	6	32	149	
Average Assessment Adolescent SDQ	15.6	20.4	14.8	17.4	17.5	18.9	17.6	17.4
Count of Discharge Adolescent SDQ	14	18	1	9		8	50	
Average Discharge Adolescent SDQ	10.1	9.1	7.0	11.3		15.5	10.8	10.6
Count clients	275	48	165	77	8	56	629	
Completion Rate Admission	18%	69%	6%	25%	75%	57%	24%	42%
Completion rate Discharge	5%	38%	1%	12%	0%	14%	8%	12%



Parent SDQ Summary Mean Scores

NB Note very low completion rates marked in yellow

NB Green highlight indicates >Org average+25% and pink indicates <Org average-25%

Org (Completion Rates at Assessment)	Count	Emot	Conduct	Hyper	Peer	Prosocial	Impact
Org A (33%)	238	4.9	5.0	2.8	2.7	6.9	4.2
Org E (65%)	37	7.0	4.5	6.9	4.1	6.2	5.8
Org C (4%)	12	4.8	5.3	5.9	3.8	5.8	6.8
Org B (65%)	93	3.8	3.8	5.6	2.3	7.4	4.4
Org D (56%)	10	6.1	4.2	6.4	3.4	6.8	5.5
Org F (53%)	46	5.6	4.3	5.8	3.8	6.4	5.0
Grand Total	436	4.9	4.6	4.2	2.9	7.3	4.5
Average of Forum		5.4	4.5	5.6	3.3	6.6	5.3

Org (Completion Rates at Discharge)	Count	Emot	Conduct	Hyper	Peer	Prosocial	Impact
Org A (4%)	26	3.8	3.7	1.7	1.7	7.3	3.3
Org E (16%)	9	1.7	1.6	2.6	0.8	3.3	1.1
Org C (0%)	1	5.0	4.0	6.0	6.0	3.0	6.0
Org B (52%)	74	2.4	2.9	6.0	1.0	6.5	2.1
Org D (6%)	1	5.0	2.0	5.0	2.0	10.0	0.0
Org F (16%)	14	4.6	2.9	5.1	3.1	8.1	1.4
Grand Total	125	3.0	1.7	4.7	1.4	6.6	2.2
Average of Forum		3.8	2.8	4.4	2.4	6.4	2.3

Change in SDQ Parent Categories from Assessment to Discharge (n=103 matched pairs)

Discharge Parent SDQ Band

Assessment Parent SDQ Band	Close to average	slightly raised	Substanti al risk	Grand Total
Close to average	28.16%	9.71%	4.85%	42.72%
slightly raised	2.91%	0.97%	2.91%	6.80%
Substantial risk	29.13%	6.80%	14.56%	50.49%
Grand Total	60.19%	17.48%	22.33%	100.00%

Colour Key

Improvement
No Change
Deteriorate

While 57% of clients were in the substantial risk or slightly raised chance of clinical problems at assessment, only 39% were in these bands at discharge.

Adolescent SDQ Summary Mean Scores NB Green highlight indicates >Org average+25% and pink indicates <Org average-25%
 Limited to valid records 11-17 years old at assessment NB Note very low completion rates marked in yellow

Org (Completion Rates
 at Assessment)

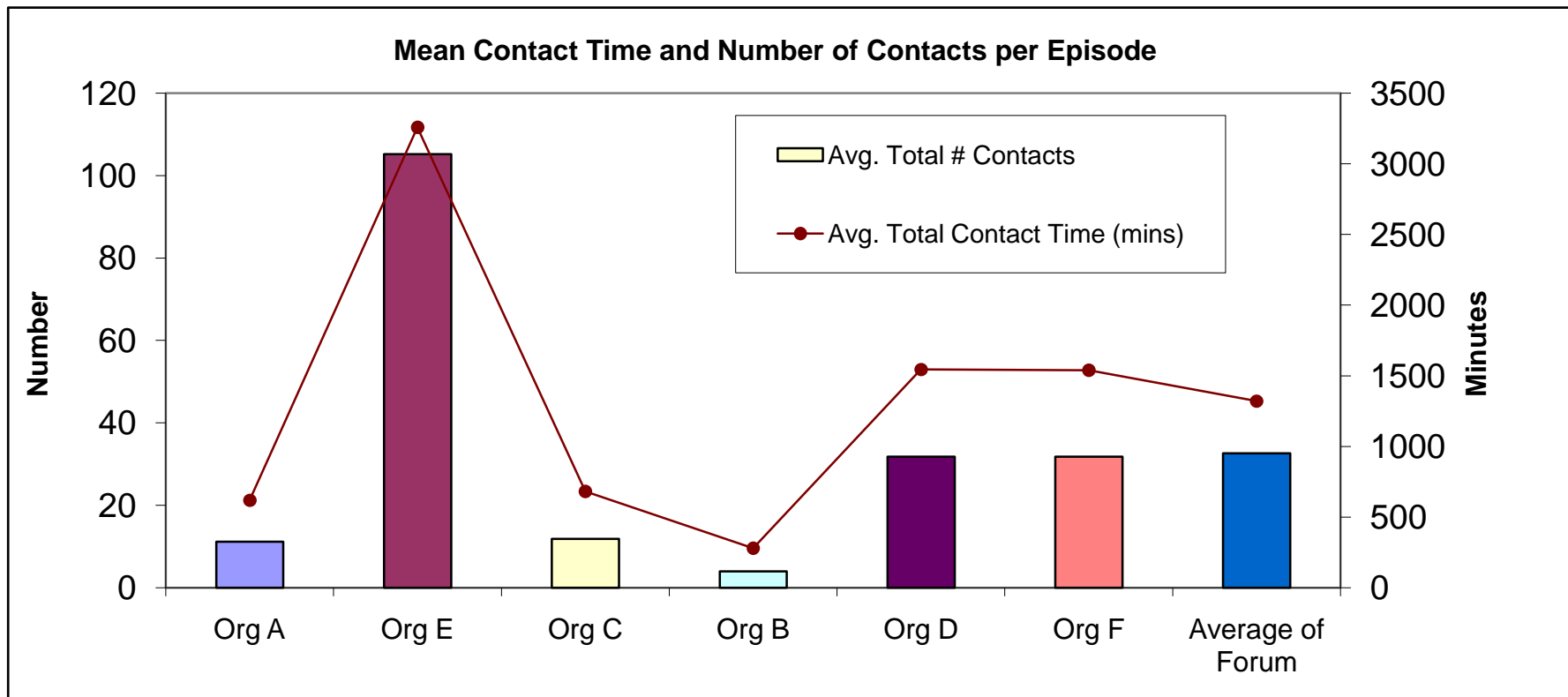
	Count	Emot	Conduct	Hyper	Peer	Prosocial	Impact
Org A (18%)	49	4.8	3.0	5.3	2.5	7.6	3.3
Org E (69%)	33	6.8	4.1	6.3	3.2	7.0	4.7
Org C (6%)	10	3.7	3.6	4.5	3.0	6.4	2.9
Org B (25%)	19	4.9	3.6	5.3	3.6	6.8	4.2
Org D (75%)	6	5.8	2.8	4.7	4.2	8.2	3.7
Org F (57%)	32	5.7	4.0	6.0	3.3	7.4	3.6
Grand Total	149	5.4	3.6	5.6	3.1	7.3	3.8
Average of Forum (42%)		5.3	3.5	5.3	3.3	7.2	3.7

Org (Completion Rates
 at Discharge)

	Count	Emot	Conduct	Hyper	Peer	Prosocial	Impact
Org A (5%)	14	3.4	1.1	3.4	2.1	8.9	2.0
Org E (38%)	18	2.6	1.7	3.4	1.4	4.1	1.4
Org C (1%)	1	0.0	1.0	4.0	2.0	8.0	1.0
Org B (12%)	9	3.0	2.0	4.6	1.8	6.6	4.2
Org D (0%)							
Org F (14%)	8	4.5	2.9	4.9	3.3	7.8	1.3
Grand Total	50	3.2	1.7	3.9	2.0	6.6	2.0
Average of Forum (12%)		2.7	1.7	4.1	2.1	7.1	2.0

KPI 14 f: Contacts per episode of care (2007 data only)

Data	Org A	Org E	Org C	Org B	Org D	Org F	Grand Total	Average of Forum
Avg. # Contacts - Child Present	7.8	63.5	8.6	1.5	19.7	17.1	10.4	19.7
Avg. # Contacts - Child Not Present	3.4	41.6	3.3	2.5	12.1	14.7	5.7	12.9
Avg. Total # Contacts	11.2	105.2	11.9	4.0	31.8	31.8	16.2	32.6
Avg. Contact Time - Child Present (mins)	498.4	2374.2	563.3	113.4	1107.8	1054.8	596.1	952.0
Avg. Contact Time - Child Not Present (mins)	119.7	883.4	117.7	165.8	436.1	483.6	184.1	367.7
Avg. Total Contact Time (mins)	618.1	3257.6	681.0	279.2	1543.9	1538.4	780.3	1319.7



National Benchmarking Project-CAMHS Inpatient Discharges project

It is critical to note that while the In-patient data also arose from a sample of all clients discharged in April-June 2007, there are difficulties comparing Org A with the other three Org's. Org A unit is directed at a younger age group and is not comparable with the acute adolescent orientation of the other three. However, it was thought that given the paucity of Australian data, it was better to include all in-patient units.

	Org A	Org B	Org D	Org F	Grand Total
Number of separations	24	41	56	44	165
Number of unique clients	24	41	56	31	152

NB Org F had 1 client with 9 seps, 2 with 3 seps, and 1 with 2 seps

Age at admission

Org	Average of Age at assessment	Max of Age at assessment	Min of Age at assessment
Org A	8.6	12.5	4.3
Org B	13.4	17.8	6.7
Org D	16.1	18.5	12
Org F	15.9	17.9	13.2
Grand Total	14.3	18.5	4.3
Adol.Units (H, Sn, SI)	15.1	18.1	10.6
All Orgs	13.5	16.7	9.1

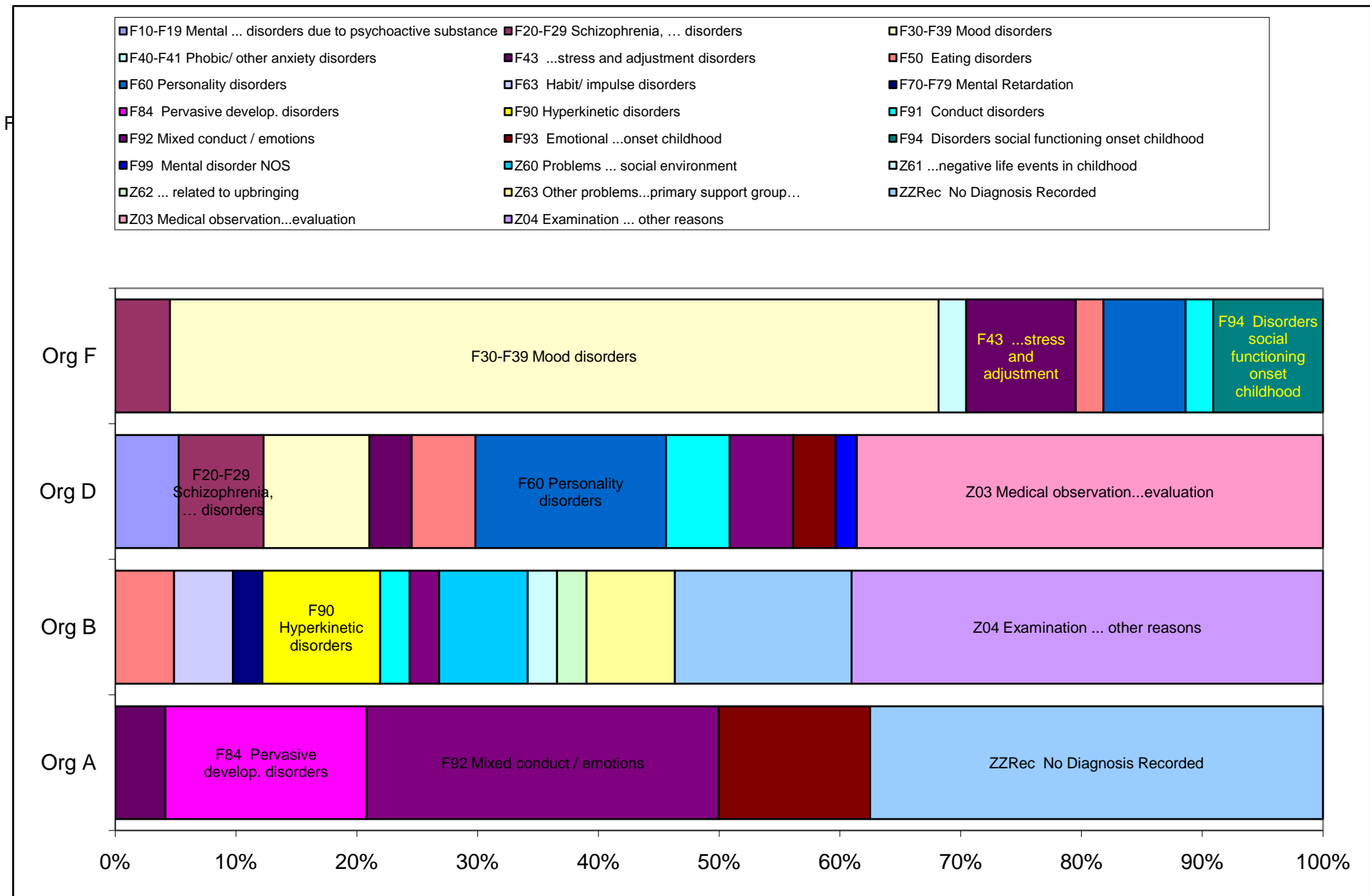
Length of stay

Org	Average # days Admission to Discharge	Max # days Admission to Discharge	Min # days Admission to Discharge
Org A	4.6	11	3
Org B	17.4	141	1
Org D	19.1	144	1
Org F	12.0	79	0
Grand Total	14.6	144	0
Adol.Units (H, Sn, SI)	16.1	121.3	0.7
All Orgs	13.3	93.8	1.3

Principal Diagnosis

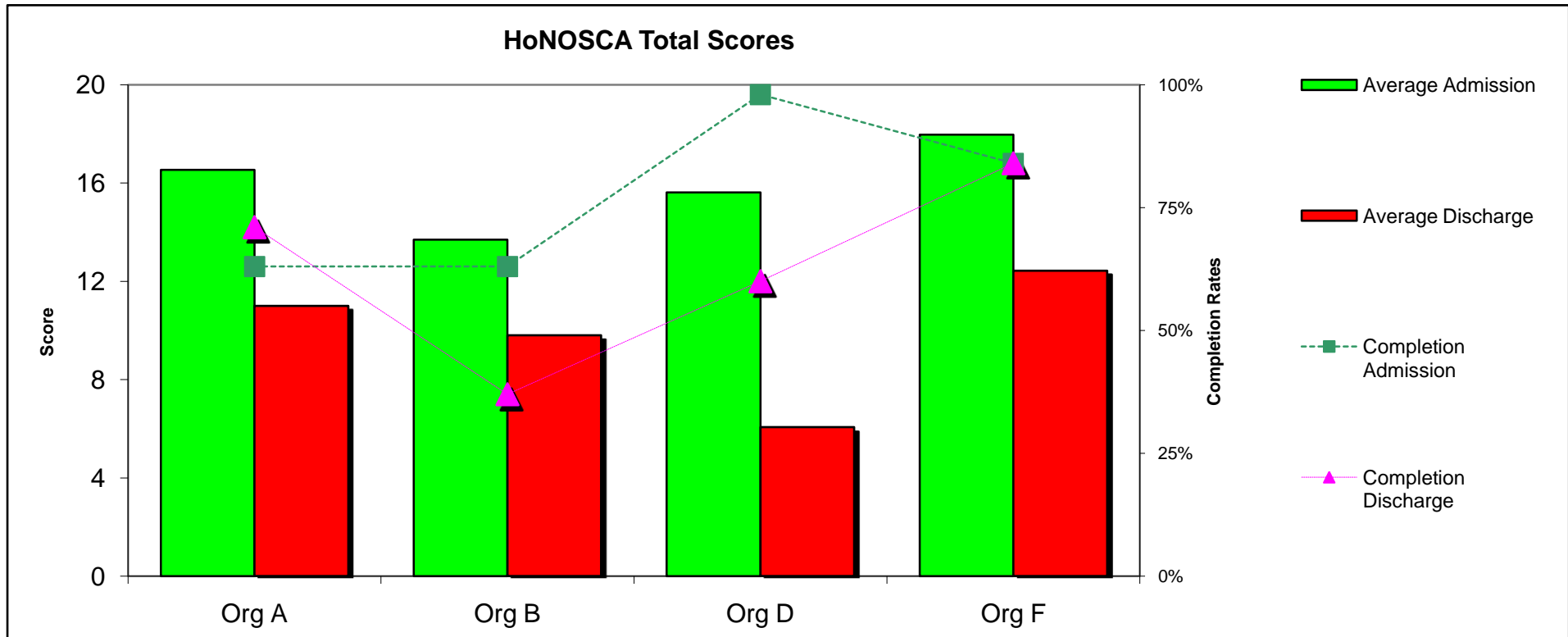
Pink/Green indicate </> 80% or 120% of unweighted average

Principal DX (Sections No decimal Description)	Org A	Org B	Org D	Org F	Grand Total
F10-F19 Mental and behavioural disorders due to psychoactive substance use			5%		2%
F20-F29 Schizophrenia, schizotypal and delusional disorders			7%	5%	4%
F30-F39 Mood (affective) disorders			9%	64%	20%
F40-F41 Phobic and other anxiety disorders				2%	1%
F43 Reaction to severe stress, and adjustment disorders	4%		4%	9%	4%
F50 Eating disorders		5%	5%	2%	4%
F60 Specific personality disorders			16%	7%	7%
F63 Habit and impulse disorders		5%			1%
F70-F79 Mental Retardation		2%			1%
F84 Pervasive developmental disorders	17%				2%
F90 Hyperkinetic disorders		10%			2%
F91 Conduct disorders		2%	5%	2%	3%
F92 Mixed disorders of conduct and emotions	29%	2%	5%		7%
F93 Emotional disorders with onset specific to childhood	13%		4%		3%
F94 Disorders of social functioning with onset specific to childhood and adolescence				9%	2%
F99 Mental disorder, not otherwise specified			2%		1%
Z60 Problems related to social environment		7%			2%
Z61 Problems related to negative life events in childhood		2%			1%
Z62 Other problems related to upbringing		2%			1%
Z63 Other problems related to primary support group, including family circumstances		7%			2%
ZZRec No Diagnosis Recorded	38%	15%			9%
Z03 Medical observation and evaluation for suspected diseases and conditions			39%		13%
Z04 Examination and observation for other reasons		39%			10%
Grand Total	100%	100%	100%	100%	100%
Count	24	41	57	44	166

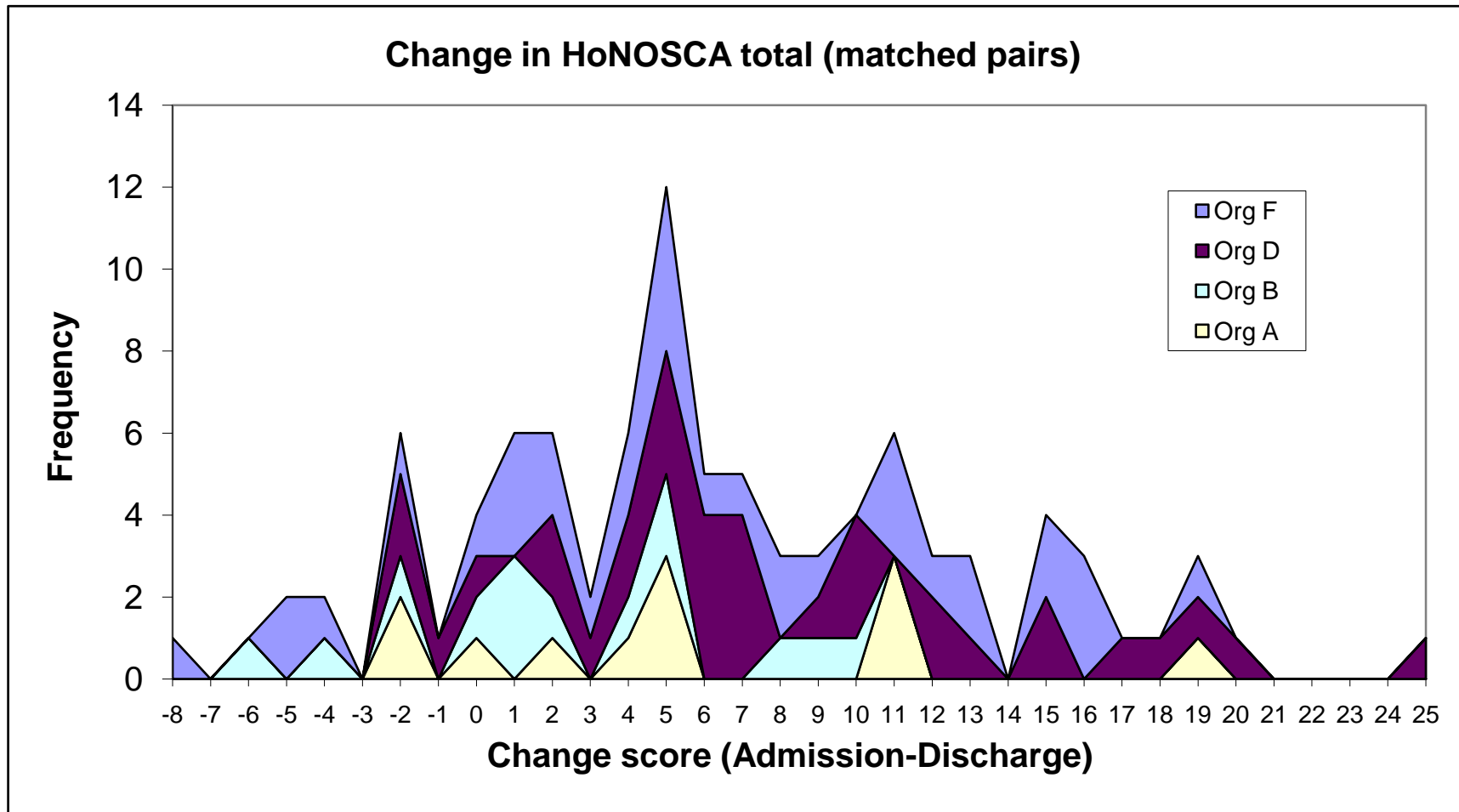


Completion of HoNOSCA/	Org A	Org B	Org D	Org F	Grand Total
Number of valid HoNOSCA at admission	15	26	56	37	134
Number of valid HoNOSCA at discharge	17	15	34	37	103
Number of separations	24	41	57	44	166
% HoNOSCA admission	63%	63%	98%	84%	81%
% HoNOSCA discharge	71%	37%	60%	84%	62%

Org	Completion Admission	Min score	Max score	Average Admission	Completion Discharge	Min Discharge	Max Discharge	Average Discharge
Org A	63%	6	30	16.5	71%	4	19	11.0
Org B	63%	3	28	13.7	37%	3	18	9.8
Org D	98%	3	31	15.6	60%	0	17	6.1
Org F	84%	6	35	18.0	84%	1	31	12.4
Grand Total	81%	3	35	16.0	62%	0	31	9.7

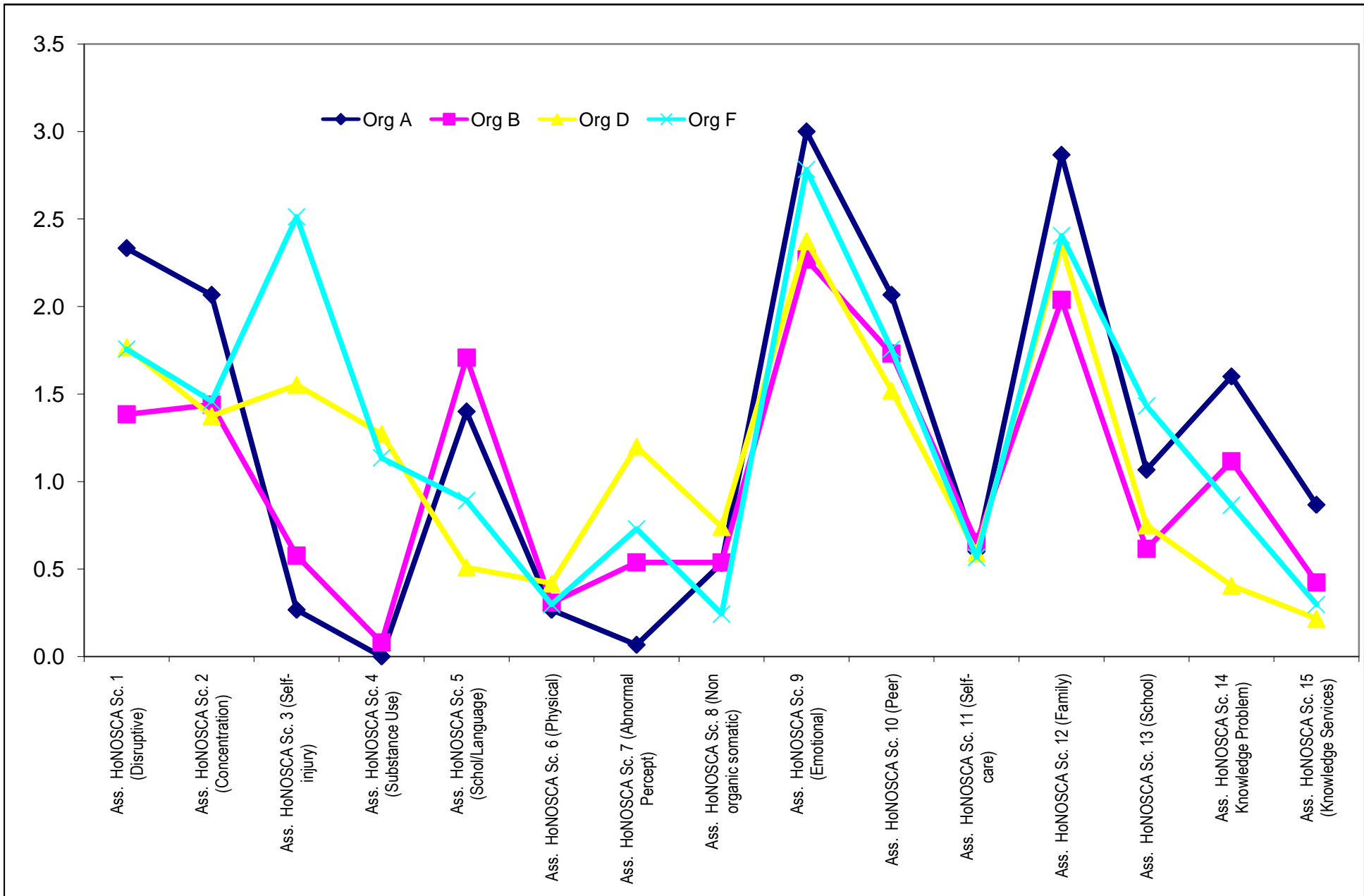


Org	# matched pairs	Average Change score	Min Change	Max Change	Number of separations	% matched pairs
Org A	12	5.8	-2	19	24	50%
Org B	14	2.4	-6	10	41	34%
Org D	34	8.3	-2	25	56	61%
Org F	35	6.3	-8	19	44	80%
Grand Total	95	6.4	-8	25	165	58%



	Org A	Org B	Org D	Org F	Grand Total
Ass. HoNOSCA Sc. 1 (Disruptive)	2.3	1.4		1.8	1.8
Ass. HoNOSCA Sc. 2 (Concentration)	2.1	1.4		1.4	1.5
Ass. HoNOSCA Sc. 3 (Self-injury)	0.3	0.6		1.6	2.5
Ass. HoNOSCA Sc. 4 (Substance Use)	0.0	0.1		1.3	1.1
Ass. HoNOSCA Sc. 5 (Schol/Language)	1.4	1.7		0.5	0.9
Ass. HoNOSCA Sc. 6 (Physical)	0.3	0.3		0.4	0.3
Ass. HoNOSCA Sc. 7 (Abnormal Percept)	0.1	0.5		1.2	0.7
Ass. HoNOSCA Sc. 8 (Non organic somatic)	0.5	0.5		0.7	0.2
Ass. HoNOSCA Sc. 9 (Emotional)	3.0	2.3		2.4	2.8
Ass. HoNOSCA Sc. 10 (Peer)	2.1	1.7		1.5	1.8
Ass. HoNOSCA Sc. 11 (Self-care)	0.6	0.7		0.6	0.6
Ass. HoNOSCA Sc. 12 (Family)	2.9	2.0		2.3	2.4
Ass. HoNOSCA Sc. 13 (School)	1.1	0.6		0.8	1.4
Ass. HoNOSCA Sc. 14 Knowledge Problem)	1.6	1.1		0.4	0.9
Ass. HoNOSCA Sc. 15 (Knowledge Services)	0.9	0.4		0.2	0.3

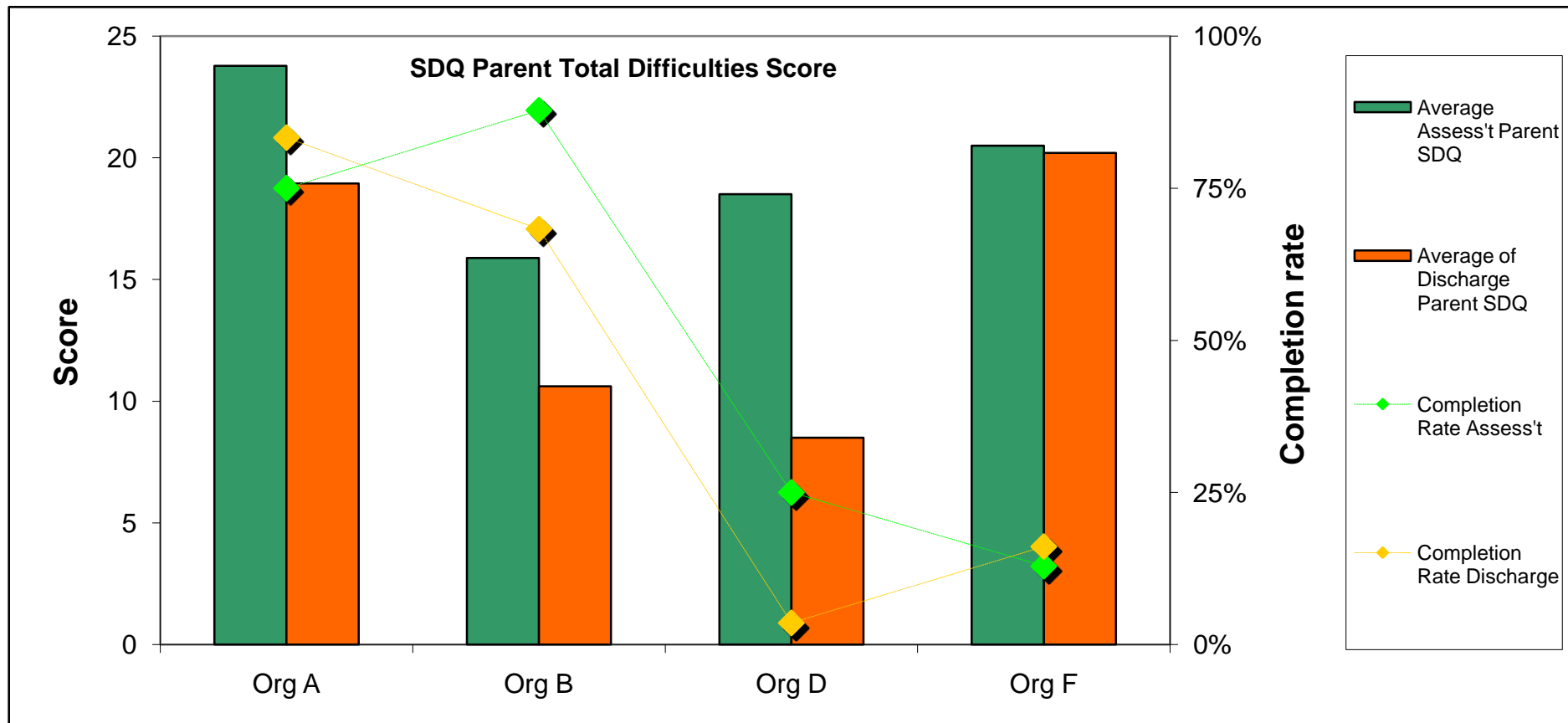
NB Sufficient records exist to calculate change scores or discharge on each scale



Parent SDQ Admission Total Difficulties Score

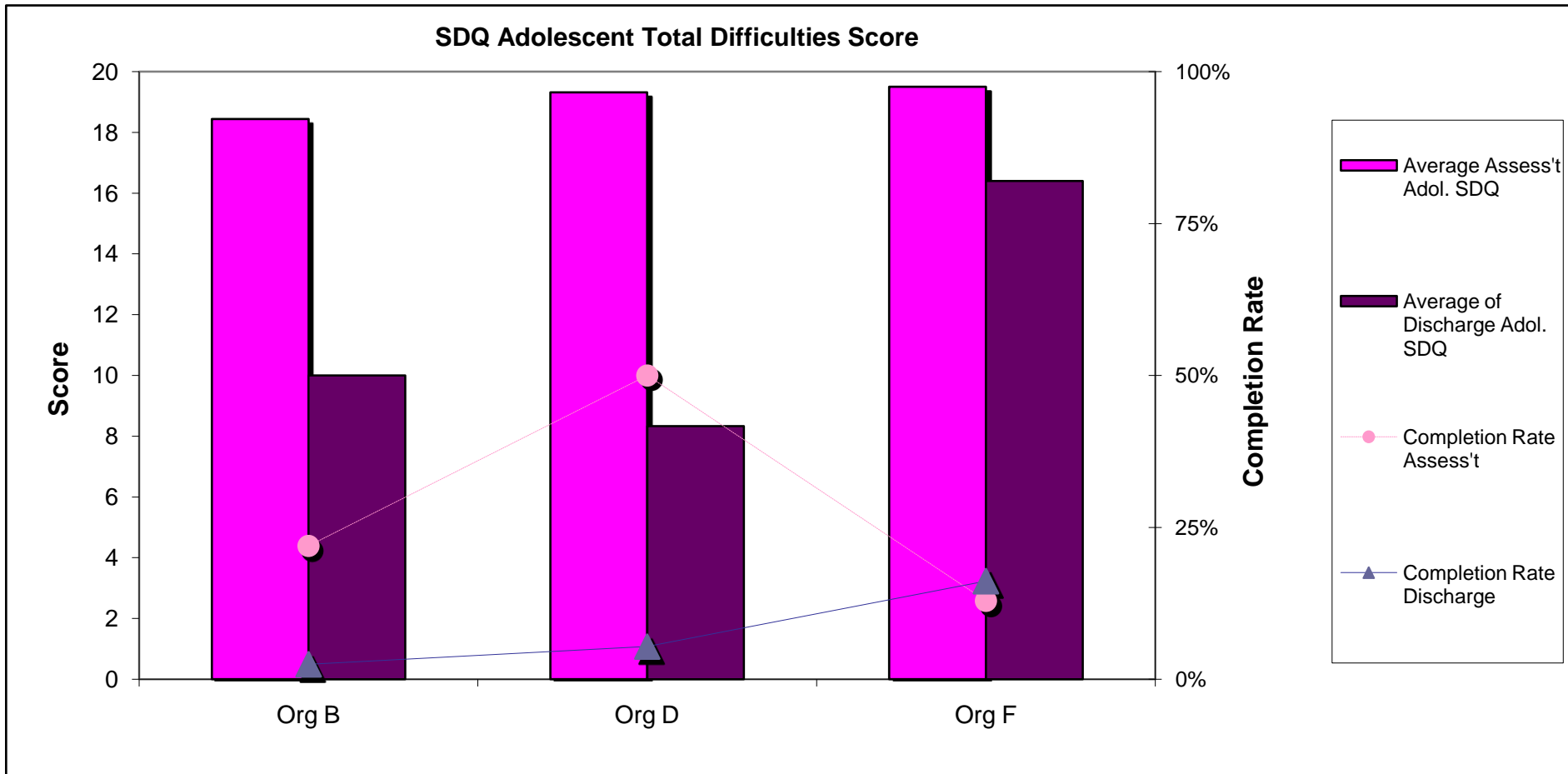
NB Not matched pairs

Org	Count Assessment Parent SDQ	Min Assessment Parent SDQ	Max Assessment Parent SDQ	Average Assess't Parent SDQ	Count Discharge Parent SDQ	Min Discharge Parent SDQ	Max of Discharge Parent SDQ	Average of Discharge Parent SDQ	Completion Rate Assess't	Completion Rate Discharge
Org A	18	16	34	23.8	20.0	8.0	34.0	19.0	75%	83%
Org B	36	2	26	15.9	28.0	5.0	20.0	10.6	88%	68%
Org D	14	4	29	18.5	2.0	1.0	16.0	8.5	25%	4%
Org F	4	19	23	20.5	5.0	14.0	28.0	20.2	13%	16%
Grand Total	72	2	34	18.6	55.0	1.0	34.0	14.4	47%	36%



SDQ Adolescent Total Difficulties

Org	Count Assessment Adol. SDQ	Min Assessment Adol. SDQ	Max Assessment Adol. SDQ	Average Assess't Adol. SDQ	Count Discharge Adol. SDQ	Min Discharge Adol. SDQ	Max of Discharge Adol. SDQ	Average of Discharge Adol. SDQ	Completion Rate Assess't	Completion Rate Discharge
Org B	9	13	25	18.4	1	10	10	10.0	22%	2%
Org D	28	6	28	19.3	3	4	15	8.3	50%	5%
Org F	4	16	25	19.5	5	9	26	16.4	13%	16%
Grand Total	41	6	28	19.1	9	4	26	13.0	27%	6%



Org	Par Assess Emot Count	Par.Emot AssessAvg	Par Conduct Assess Avg	Par Hyper Assess Avg	Par Peer Assess Avg	Par Prosocial Assess Avg	Par Impact Assess Avg
Org A	18.0	5.6	5.7	7.9	4.6	5.7	6.7
Org B	36.0	4.3	3.6	5.2	2.9	8.2	5.0
Org D	14.0	6.1	3.8	5.5	3.4	6.2	4.7
Org F	4.0	8.5	1.5	6.5	4.0	8.0	6.5
Grand Total	72.0	5.2	4.0	6.0	3.5	7.2	5.4

Org	Par Emot Dis Count	Par Dis Emot Avg	Par Dis Conduct Avg	Par Dis Hyper Avg	Par Dis Peer Avg	Par Dis Prosocial Avg	Par Dis Impact Avg	%complet e assess	% complete discharge
Org A	20.0	4.4	4.3	6.8	3.6	6.8	6.4	75%	83%
Org B	28.0	2.0	2.6	5.3	0.7	6.8	1.1	88%	68%
Org D	2.0	3.5	1.0	2.5	1.5	10.0	0.0	25%	4%
Org F	5.0	6.8	4.2	7.2	2.0	6.6	5.8	13%	16%
Grand Total	55.0	3.3	3.3	5.9	1.9	6.9	3.4	47%	36%