

National Mental Health Benchmarking Project

An Australian Government funded initiative



Community Forensic Census

Forensic Mental Health Services Forum

Version 1

Australian Mental Health Outcomes and Classification Network

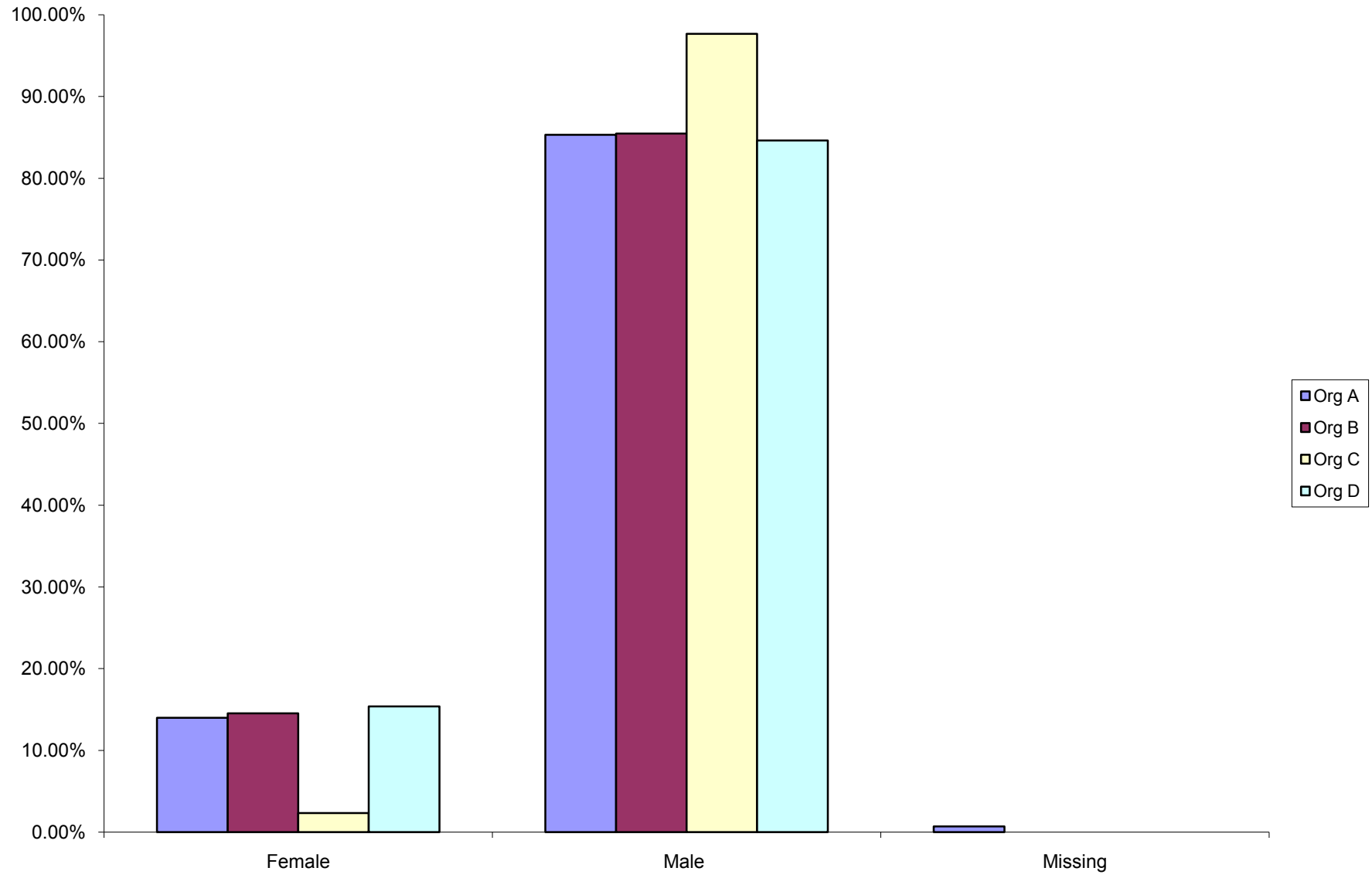
Forum - 23 November 2006



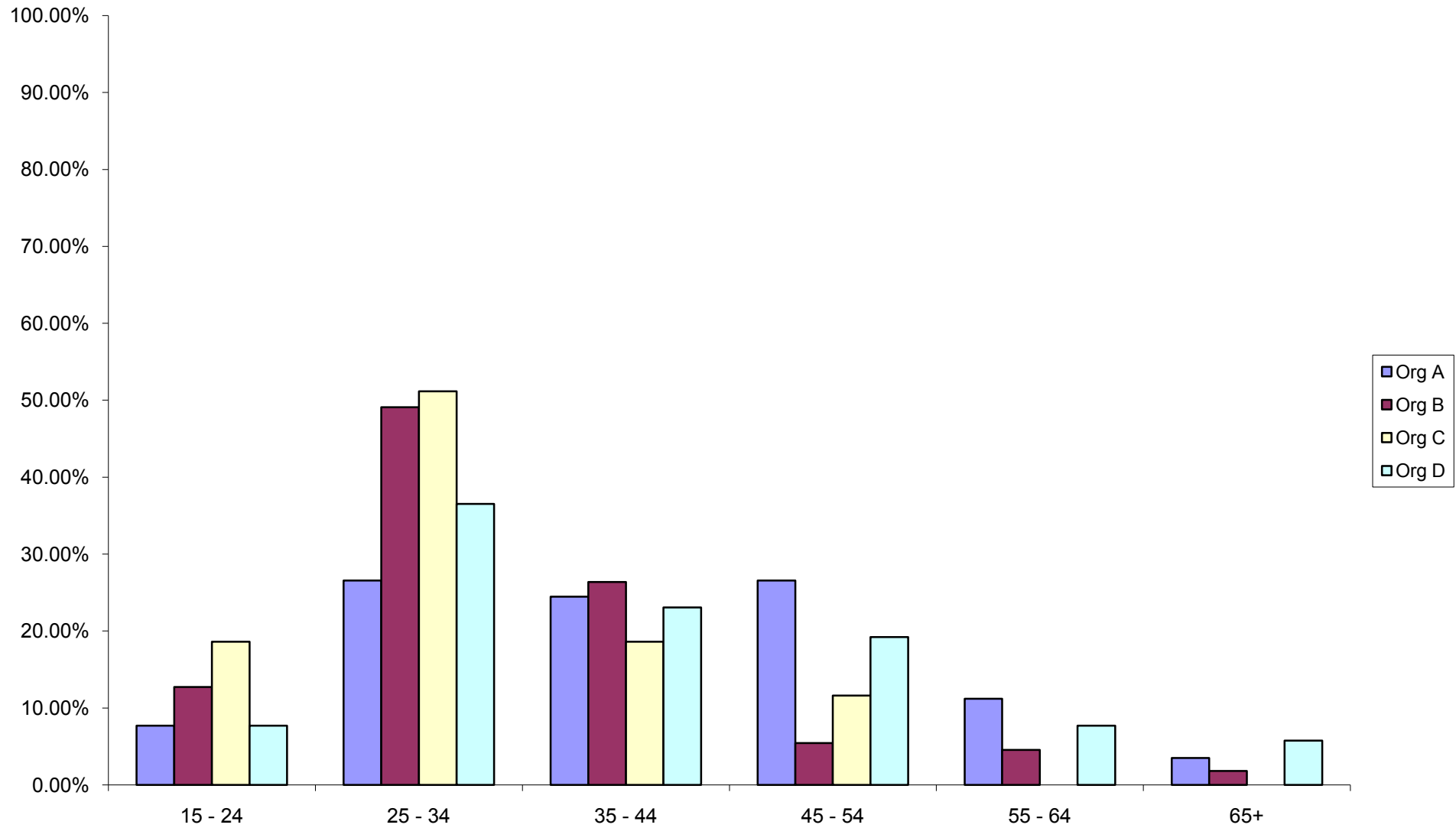
AMHOCN

"Sharing Information to
Improve Outcomes"

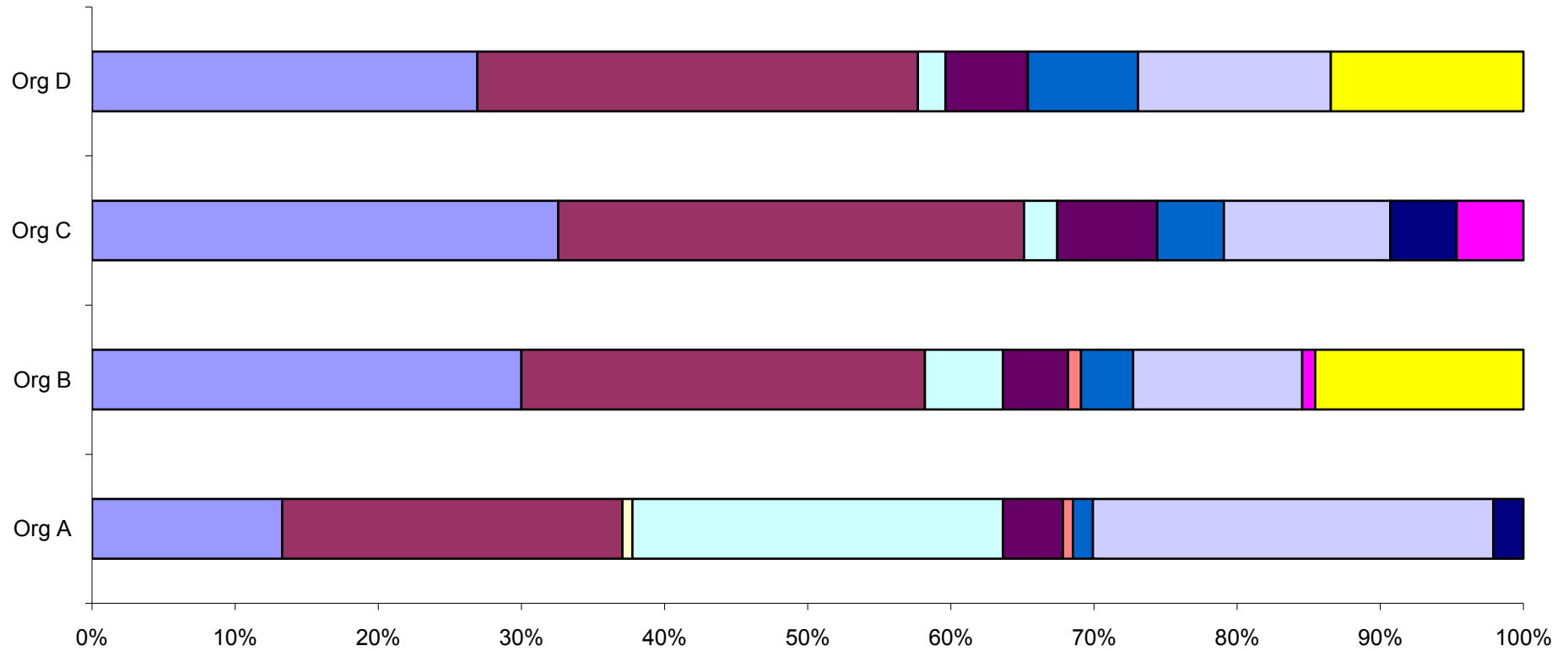
Gender by Organisation



Age Group by Organisation

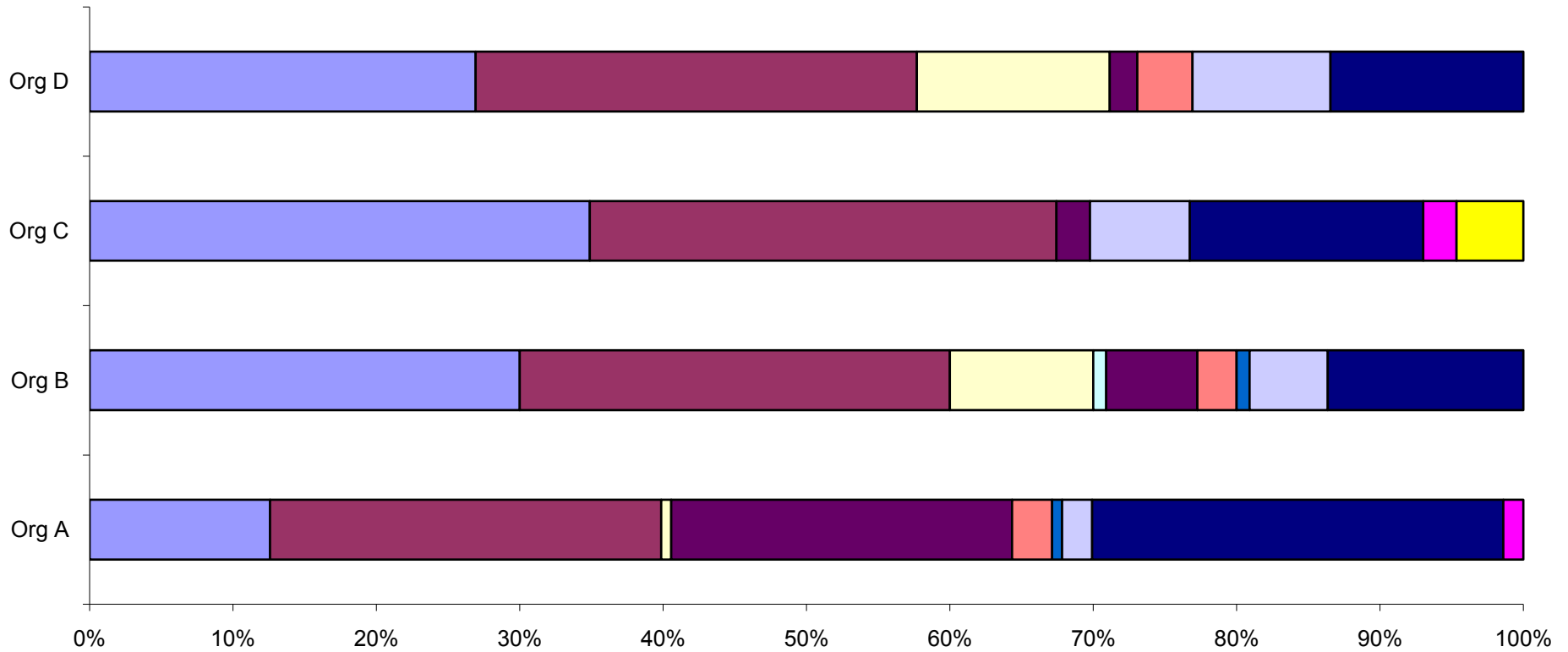


Major Index Offence



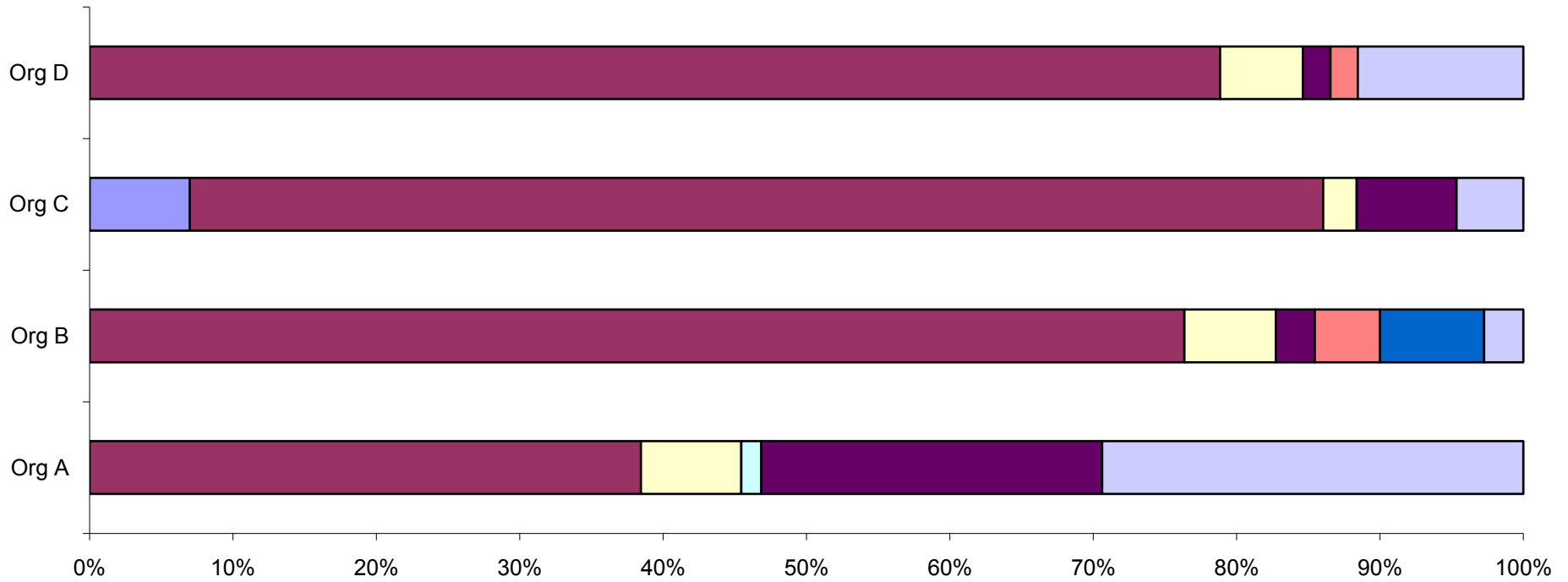
- Acts intended to cause injury
- Homicide and attempted homicide
- Offences against justice procedures, Govt & Security
- Other
- Property damage
- Road traffic and motor vehicle regulatory offences
- Robbery, extortion related offences
- Sexual related offences
- Theft
- Unlawful break and enter, burglary
- Missing

Most Serious Known Offence



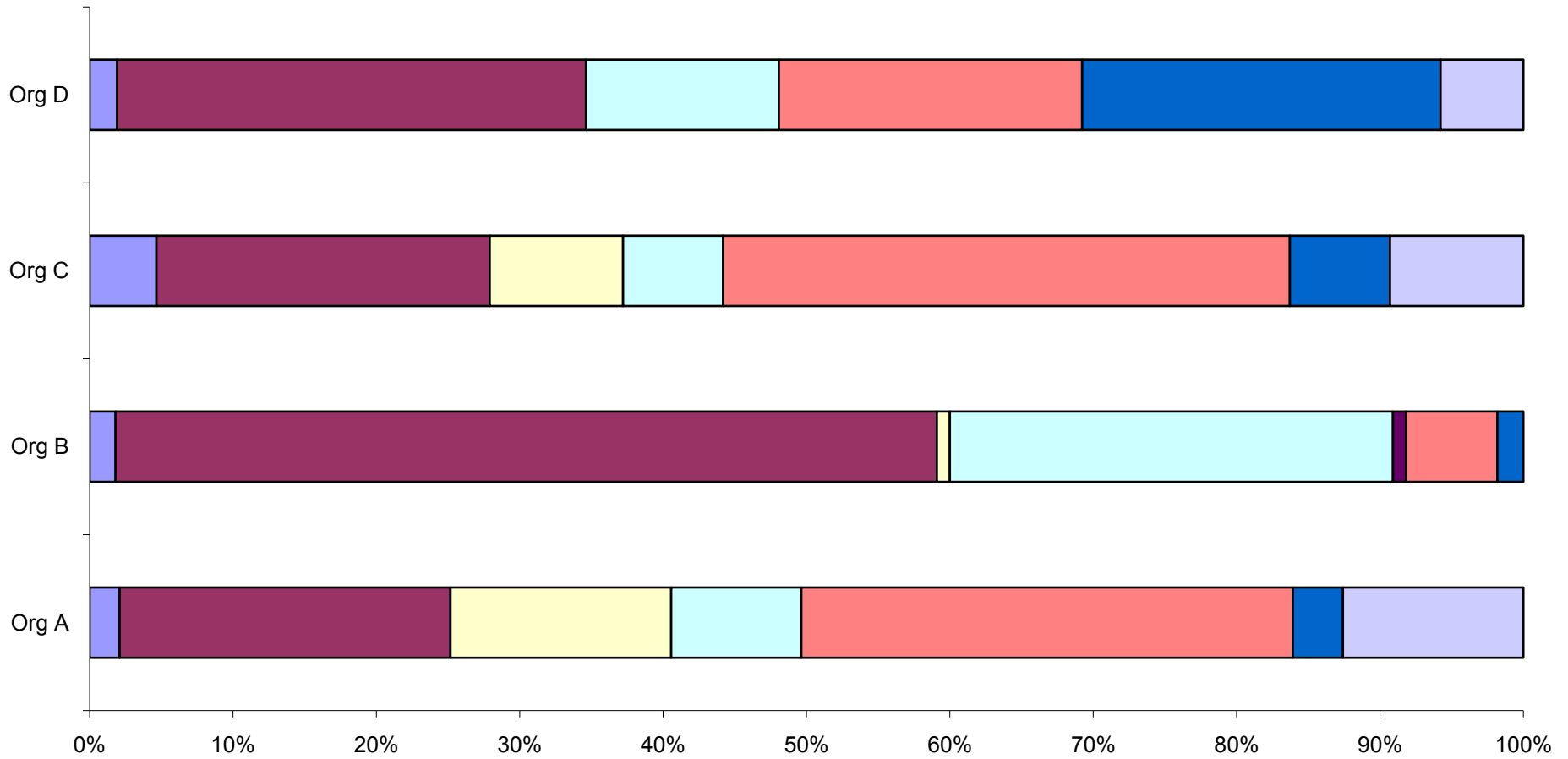
- Acts intended to cause injury
- Homicide and attempted homicide
- Missing
- Other
- Offences against justice procedures, Govt & Security
- Property damage
- Road traffic and motor vehicle regulatory offences
- Robbery, extortion related offences
- Sexual related offences
- Theft
- Unlawful break and enter, burglary

Primary Diagnosis

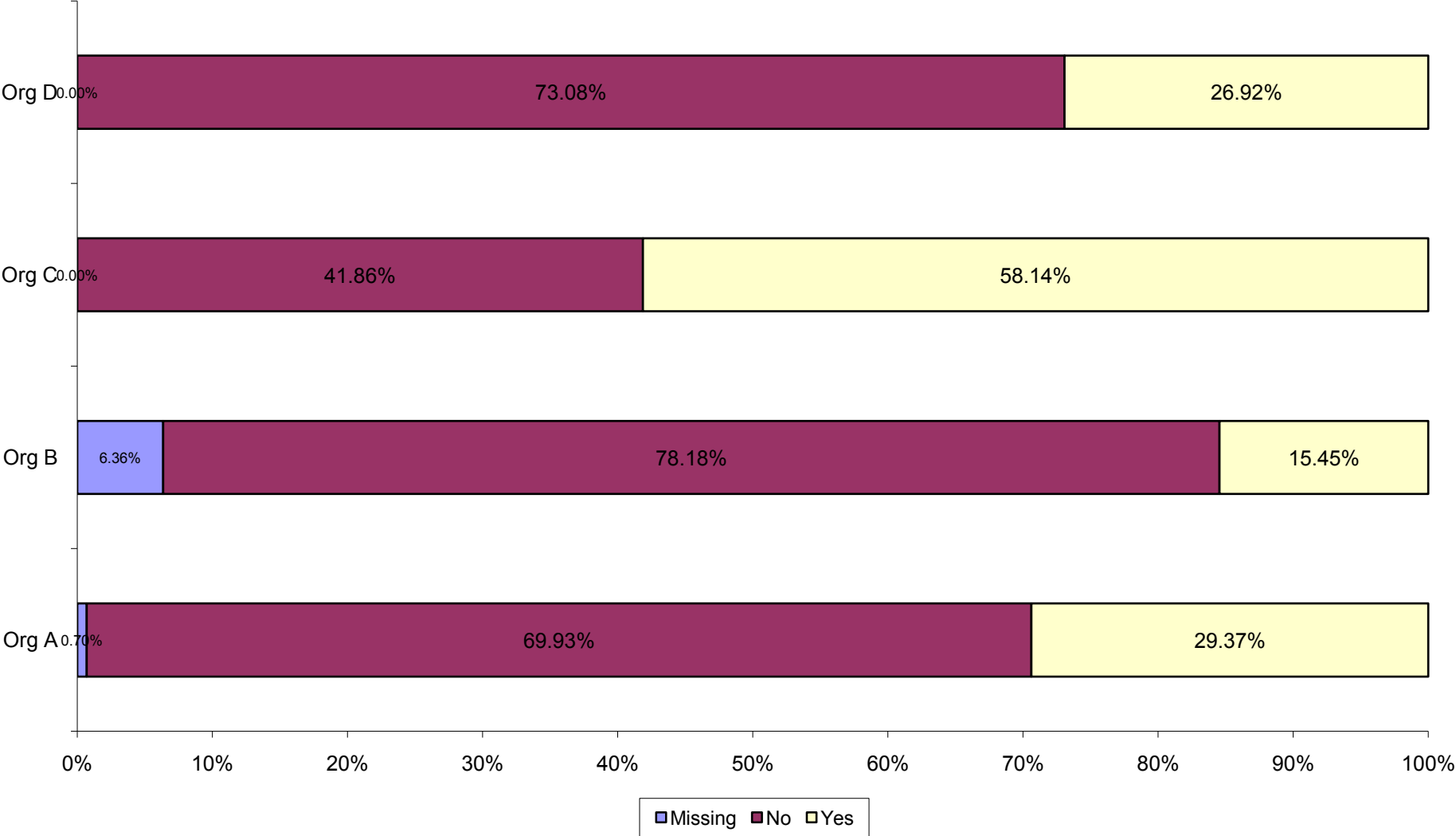


- F10- F19 Mental and Behavioural Disorders due to psychoactive substance abuse
- F20-29 Schizophrenia, Schizotypal and Delusional Disorders
- F30-39 Mood Disorders
- F40-49 Stress Related Disorders
- F60-69 Adult Personality Disorders
- F70-79 Mental Retardation
- Missing
- Other

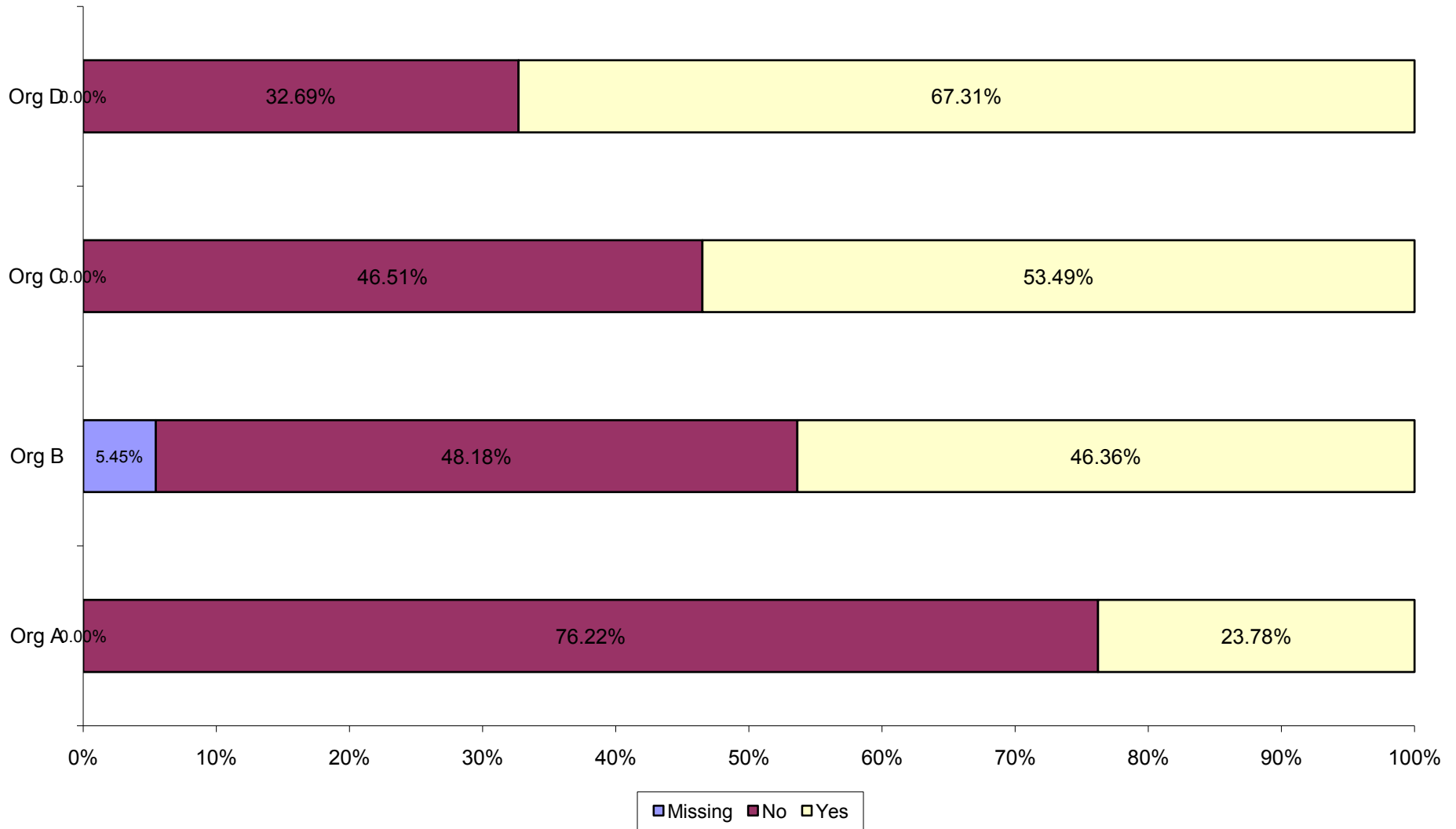
Legal Status



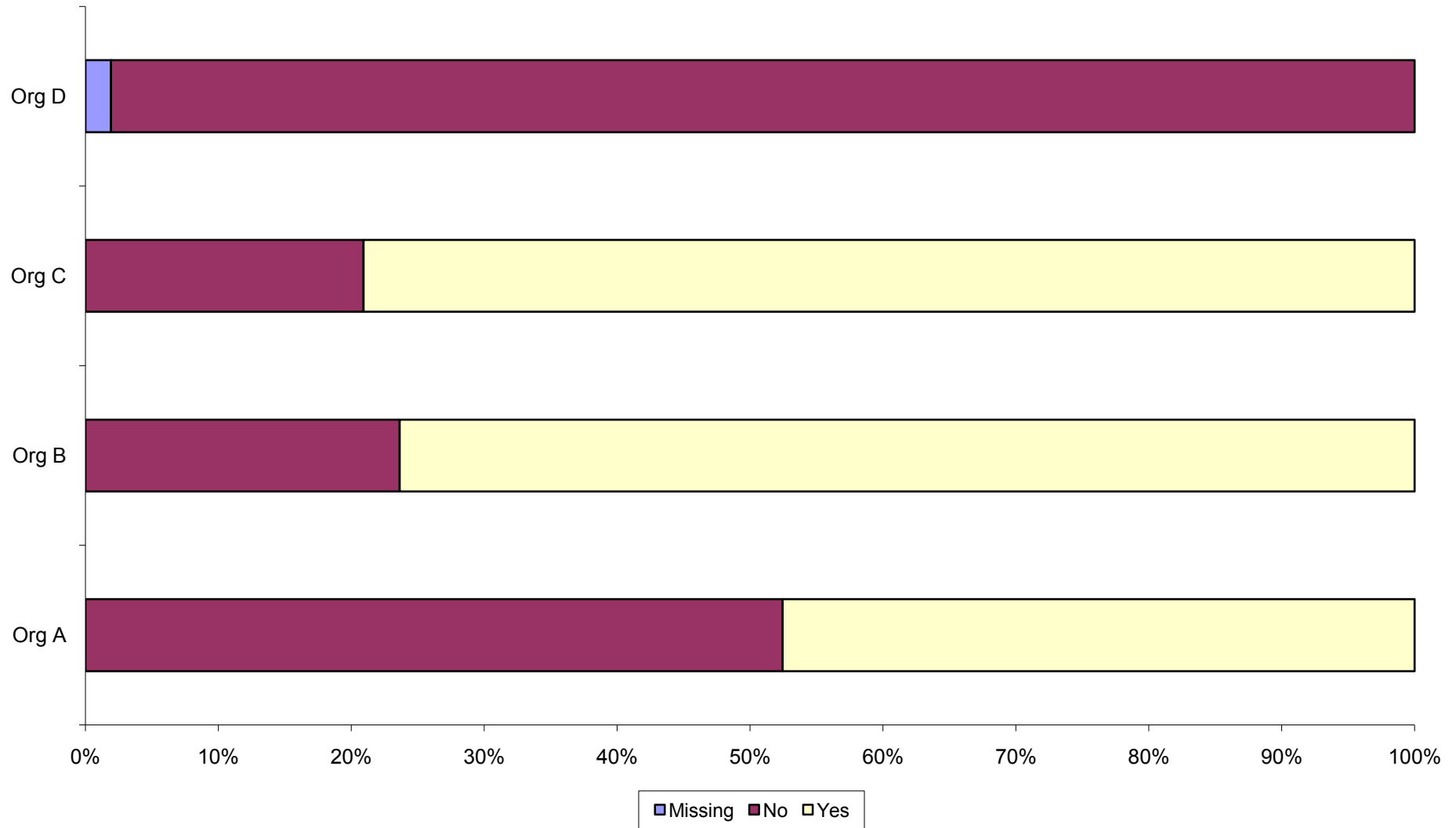
Co-occurring mental illness



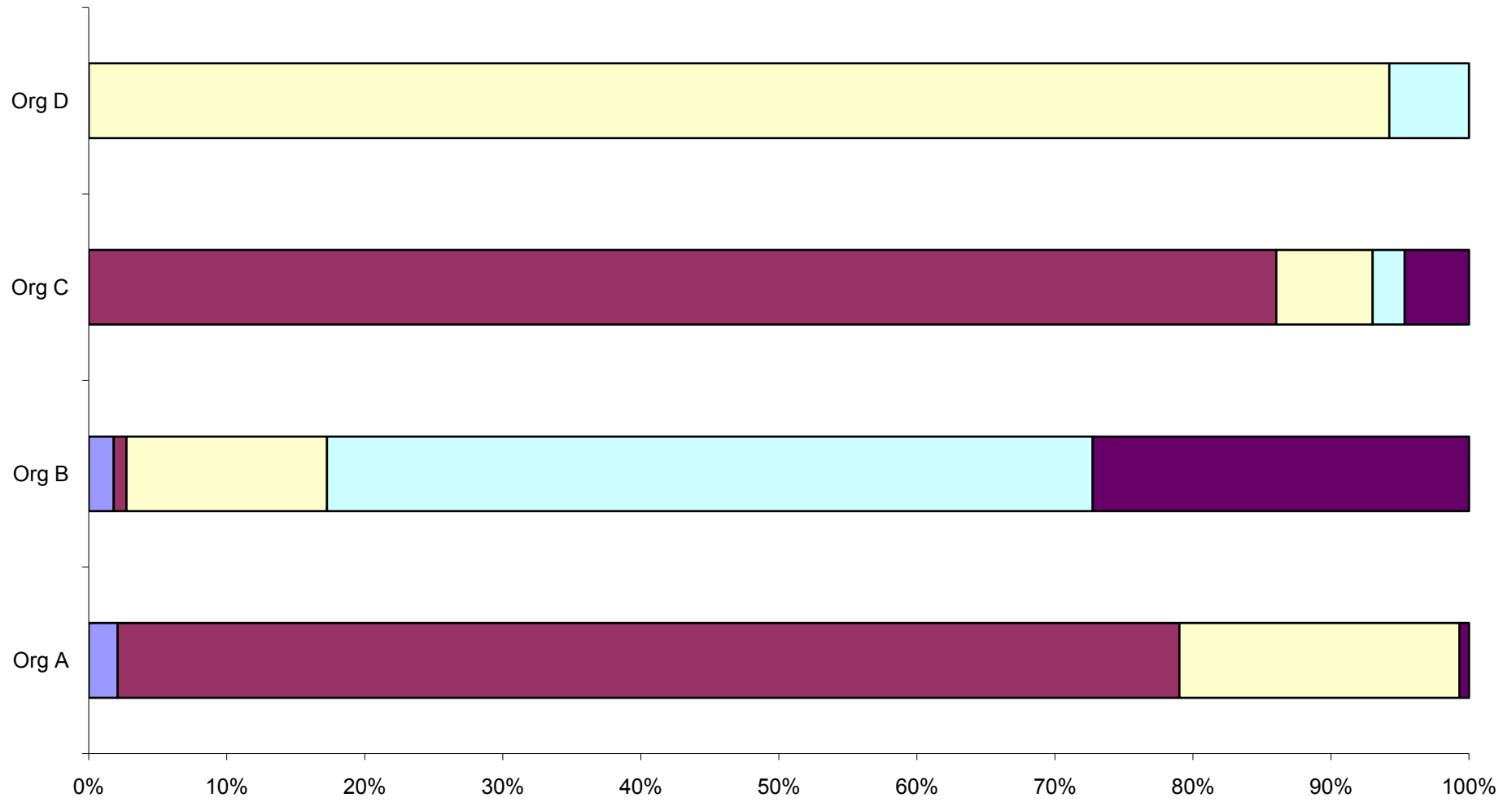
Co-occurring Substance Use



Previous Episode of Care

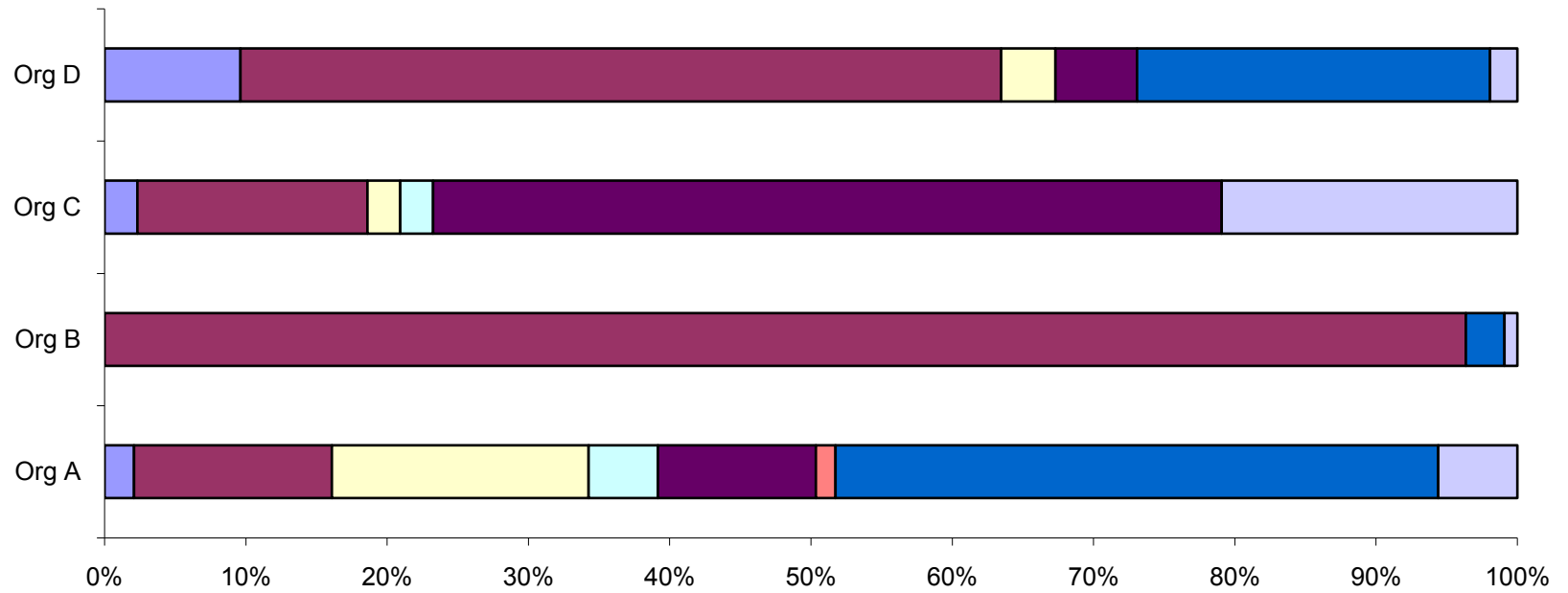


Model of Care



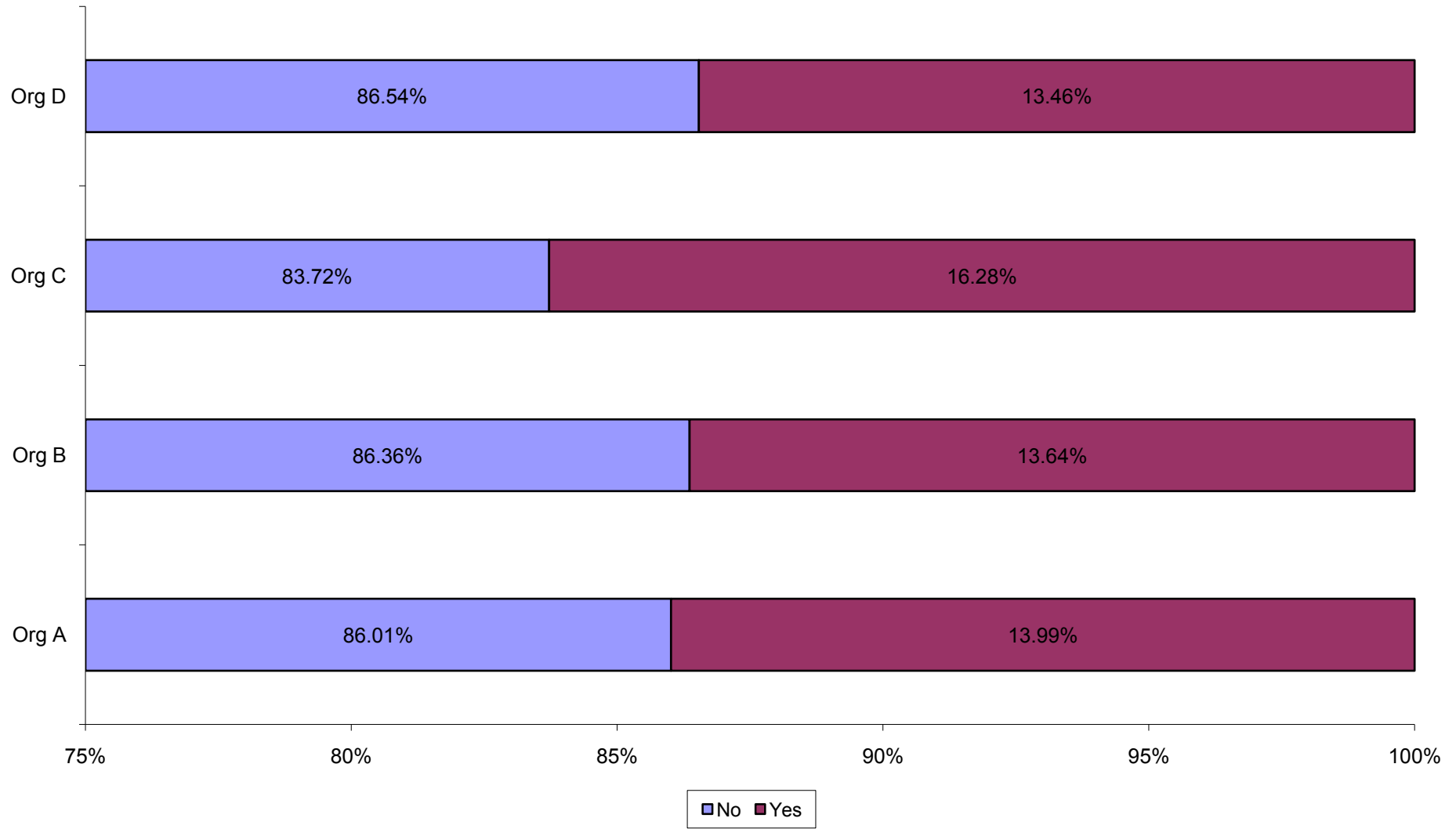
■ Missing ■ Type 1 ■ Type 2 ■ Type 3 ■ Type 4

Referral Source

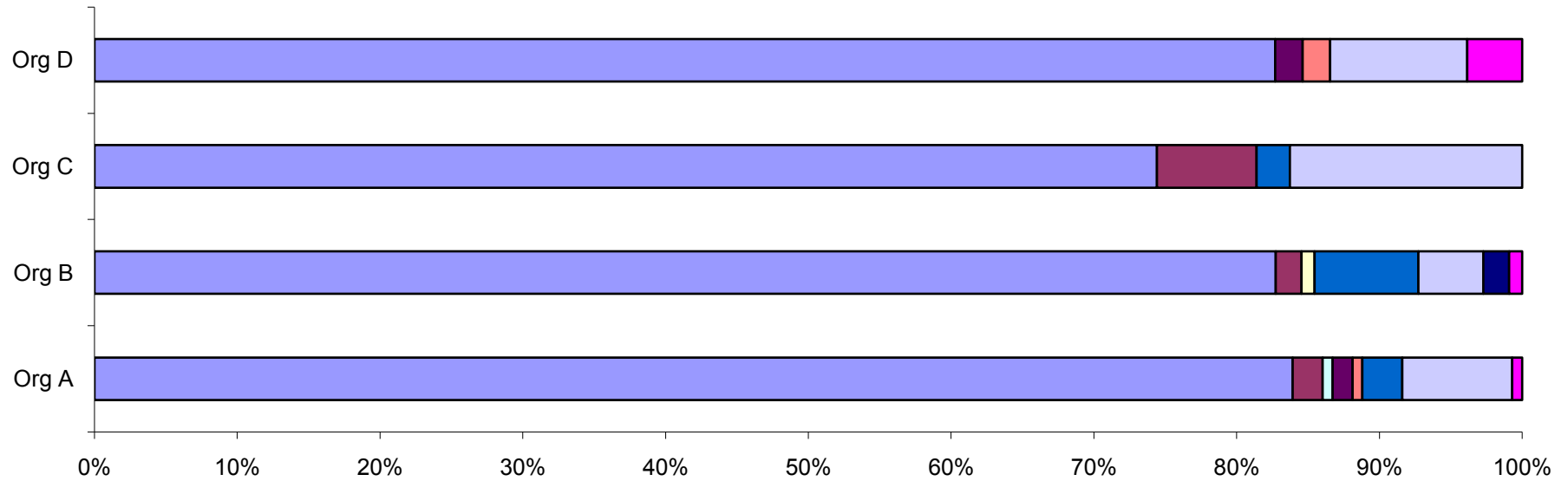


	Org A	Org B	Org C	Org D
■ Adult Parole Board	2.1%	0.0%	2.3%	9.6%
■ Area Mental Health Services	14.0%	96.4%	16.3%	53.8%
■ Community Corrections	18.2%	0.0%	2.3%	3.8%
■ Court	4.9%	0.0%	2.3%	0.0%
■ Intra-agency	11.2%	0.0%	55.8%	5.8%
■ Missing	1.4%	0.0%	0.0%	0.0%
■ Other	42.7%	2.7%	0.0%	25.0%
■ Prison Services	5.6%	0.9%	20.9%	1.9%

Indigenous Australian

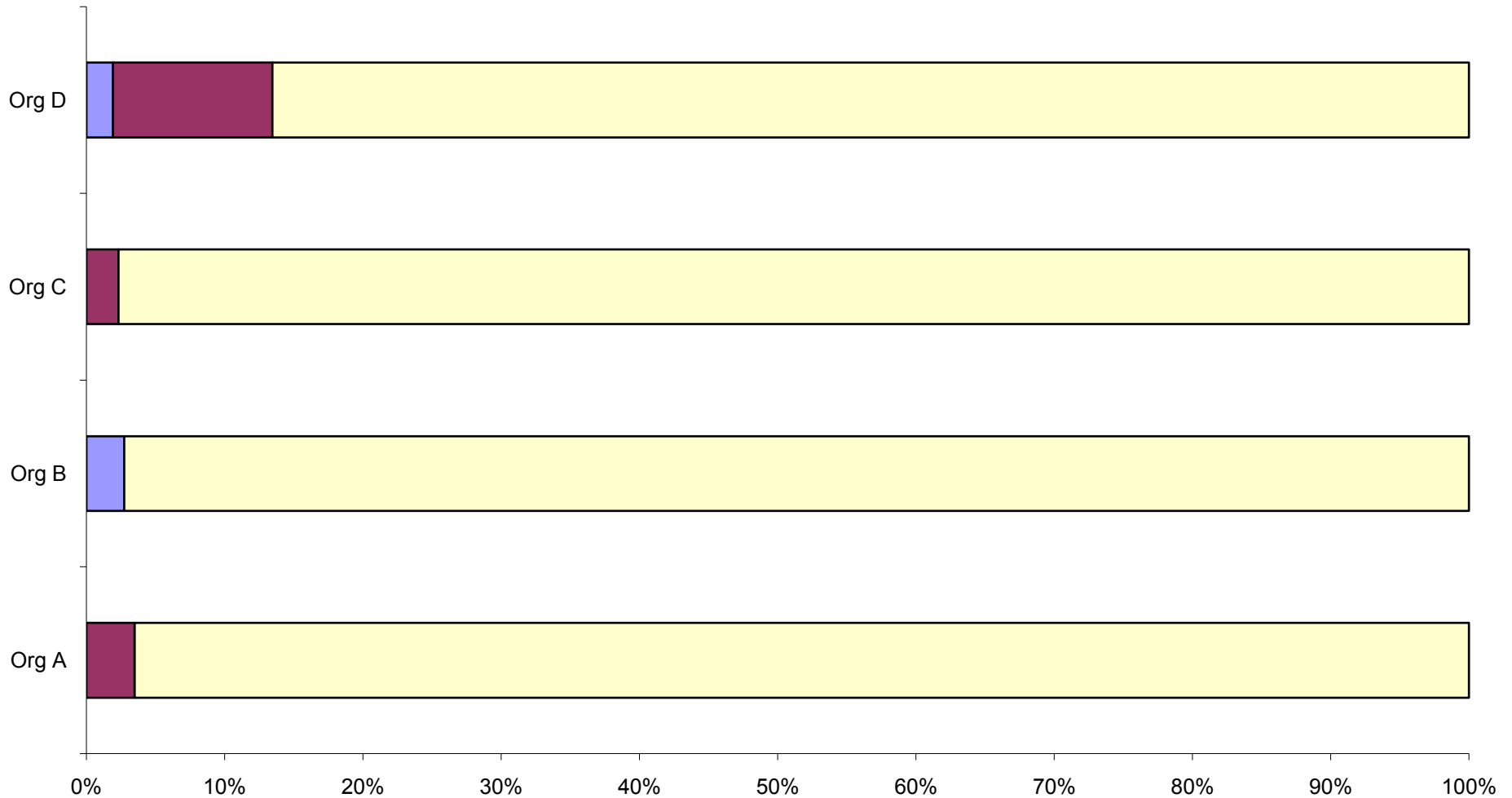


Country of Birth



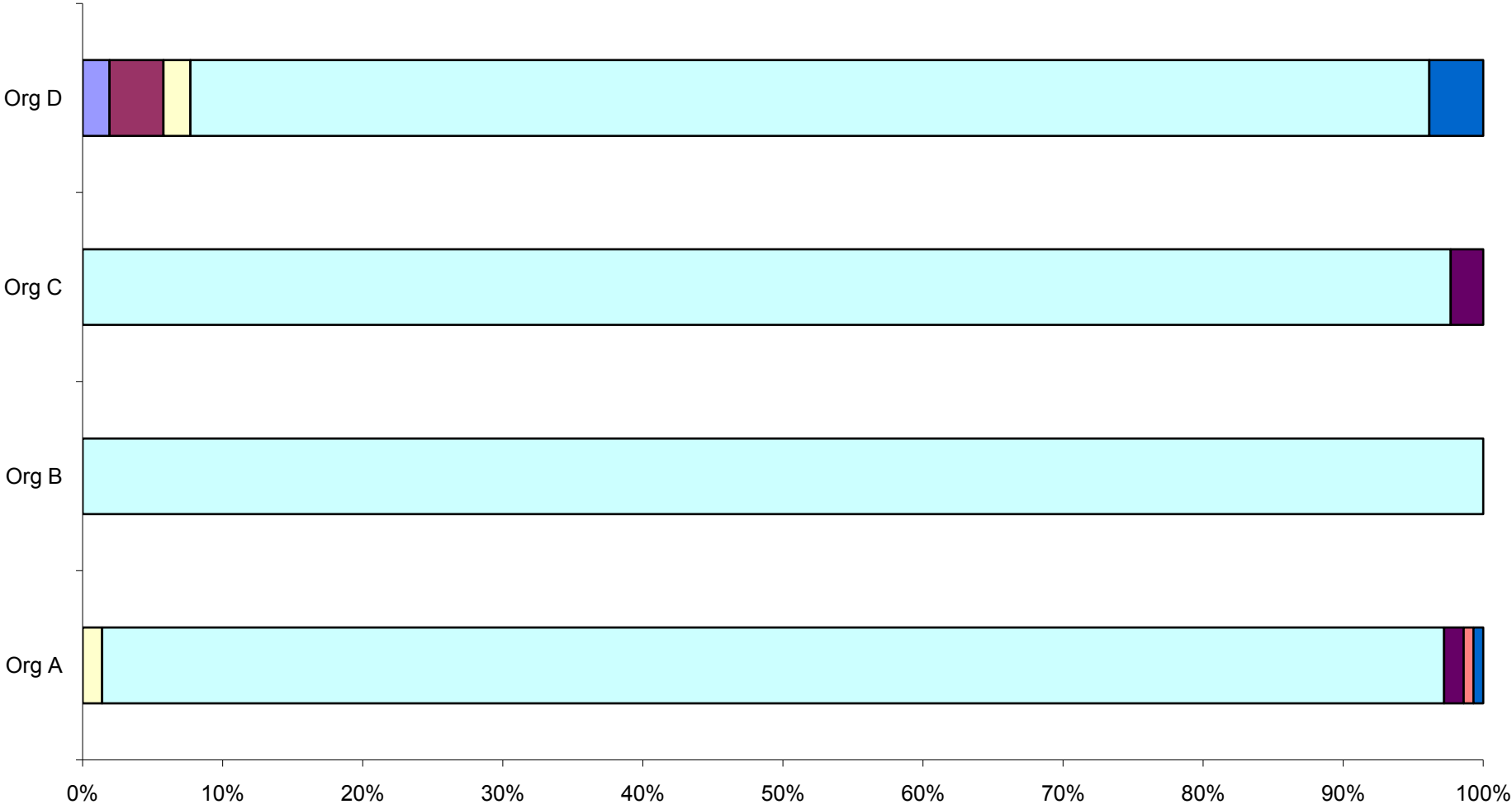
	Org A	Org B	Org C	Org D
■ Australia	83.9%	82.7%	74.4%	82.7%
■ England	2.1%	1.8%	7.0%	0.0%
■ Germany	0.0%	0.9%	0.0%	0.0%
■ Greece	0.7%	0.0%	0.0%	0.0%
■ Italy	1.4%	0.0%	0.0%	1.9%
■ Missing	0.7%	0.0%	0.0%	1.9%
■ New Zealand	2.8%	7.3%	2.3%	0.0%
■ Other	7.7%	4.5%	16.3%	9.6%
■ Philippines	0.0%	1.8%	0.0%	0.0%
■ Viet Nam	0.7%	0.9%	0.0%	3.8%

Main Language English



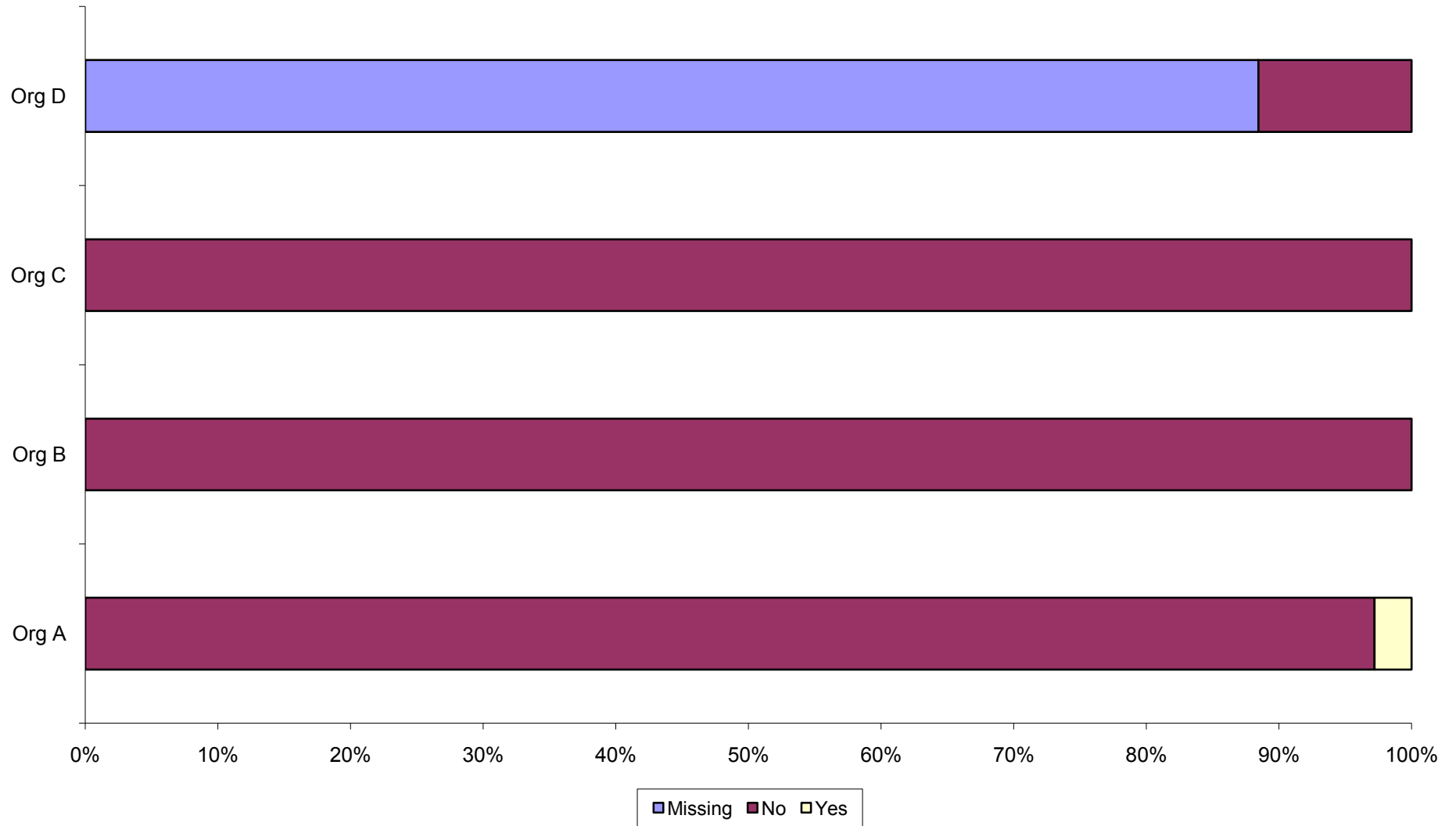
Missing no Yes

Main Language

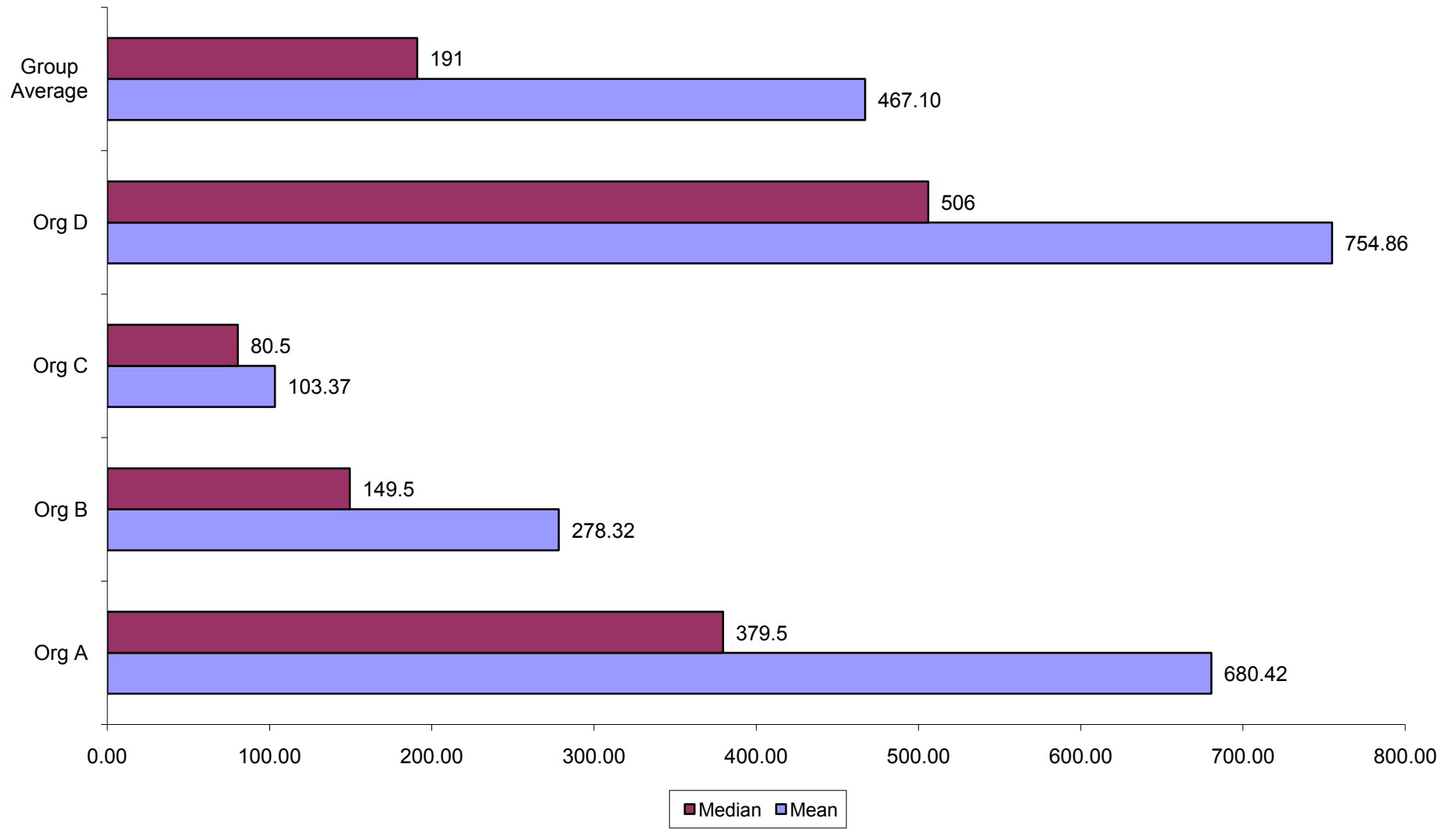


■ Arabic (including Lebanese) ■ Croatian □ Italian □ Missing ■ Other(a) ■ Turkish ■ Vietnamese

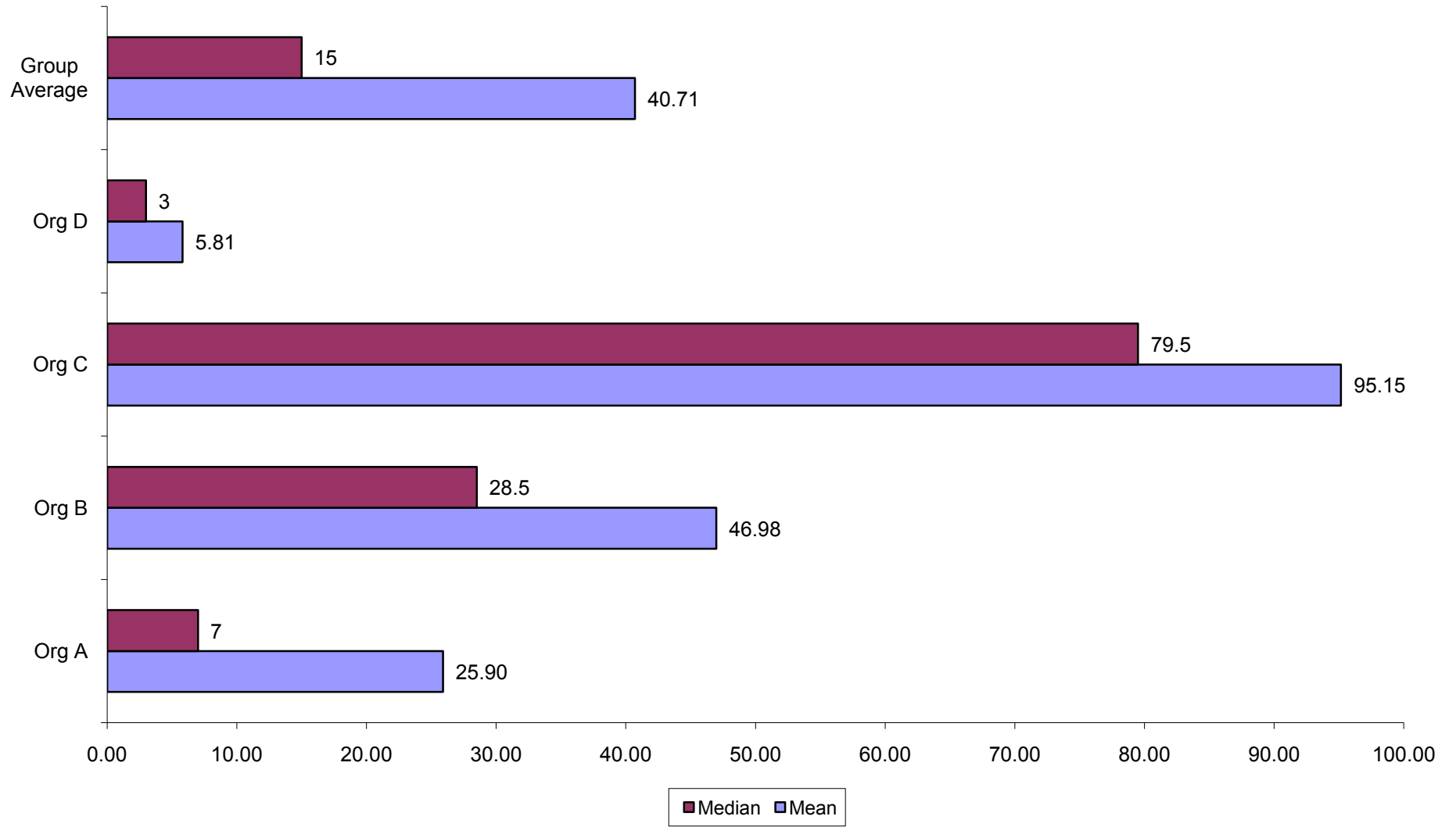
Interpreter Required



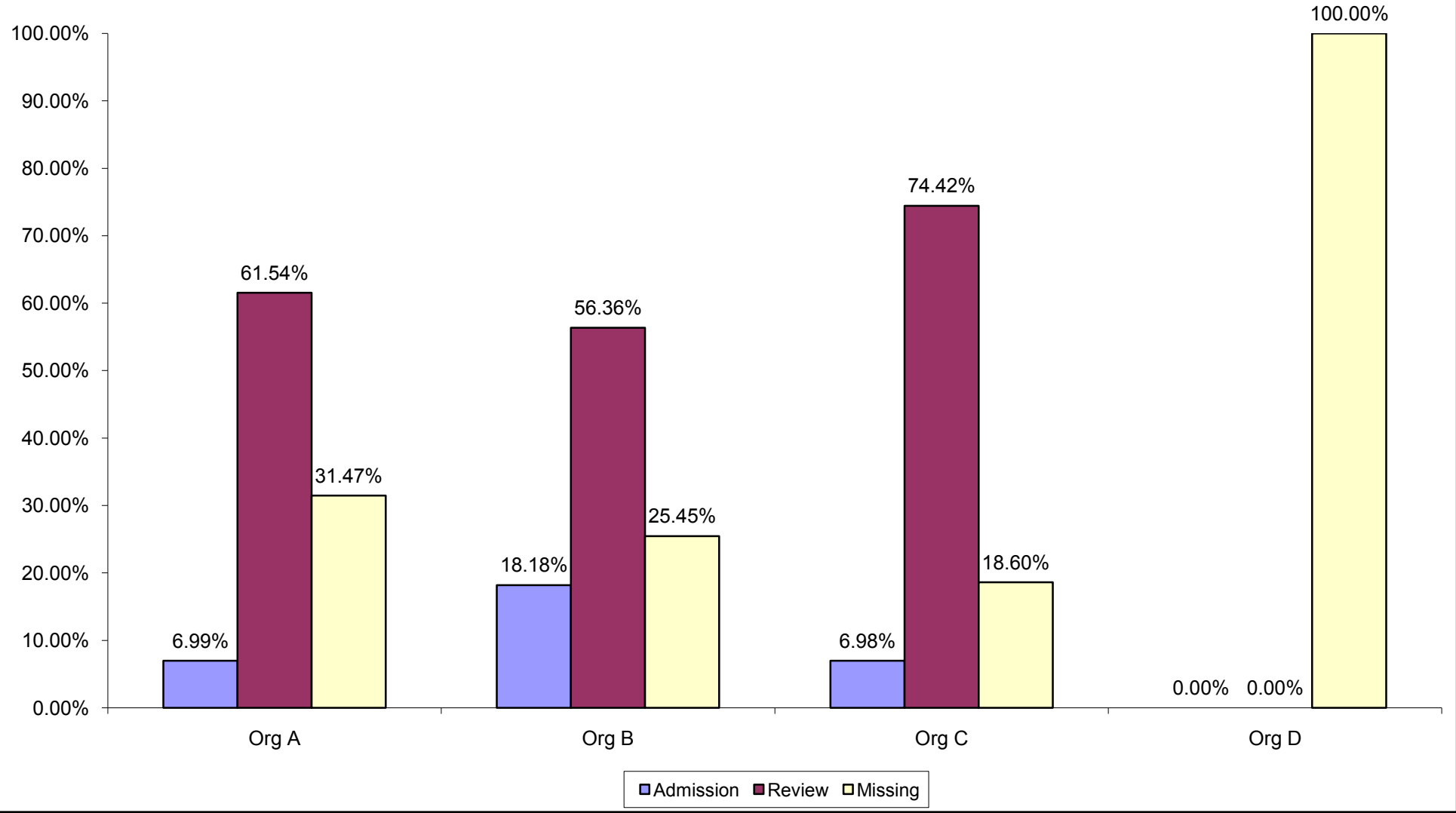
Days Since Episode Start



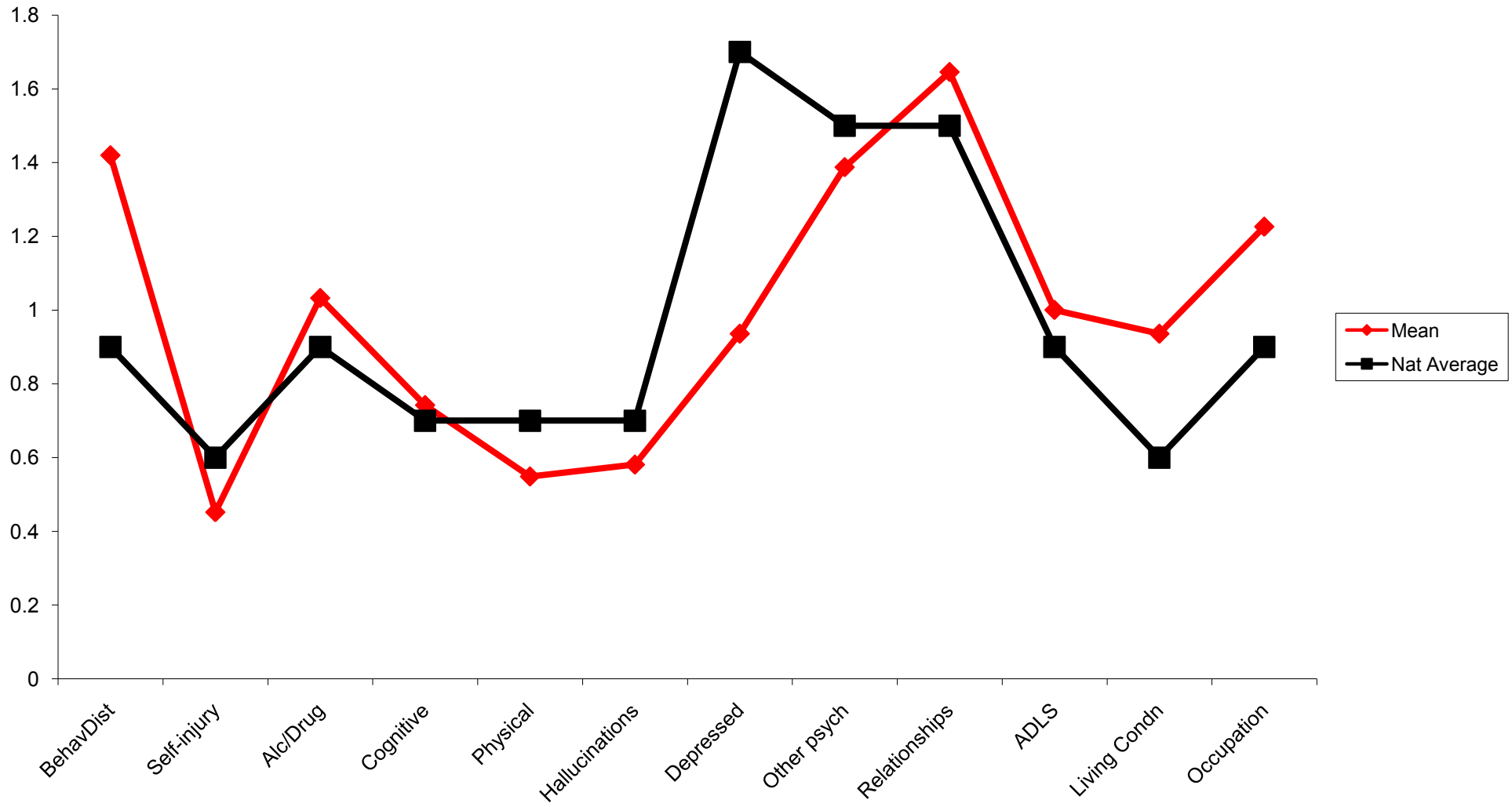
Time Since Last Contact



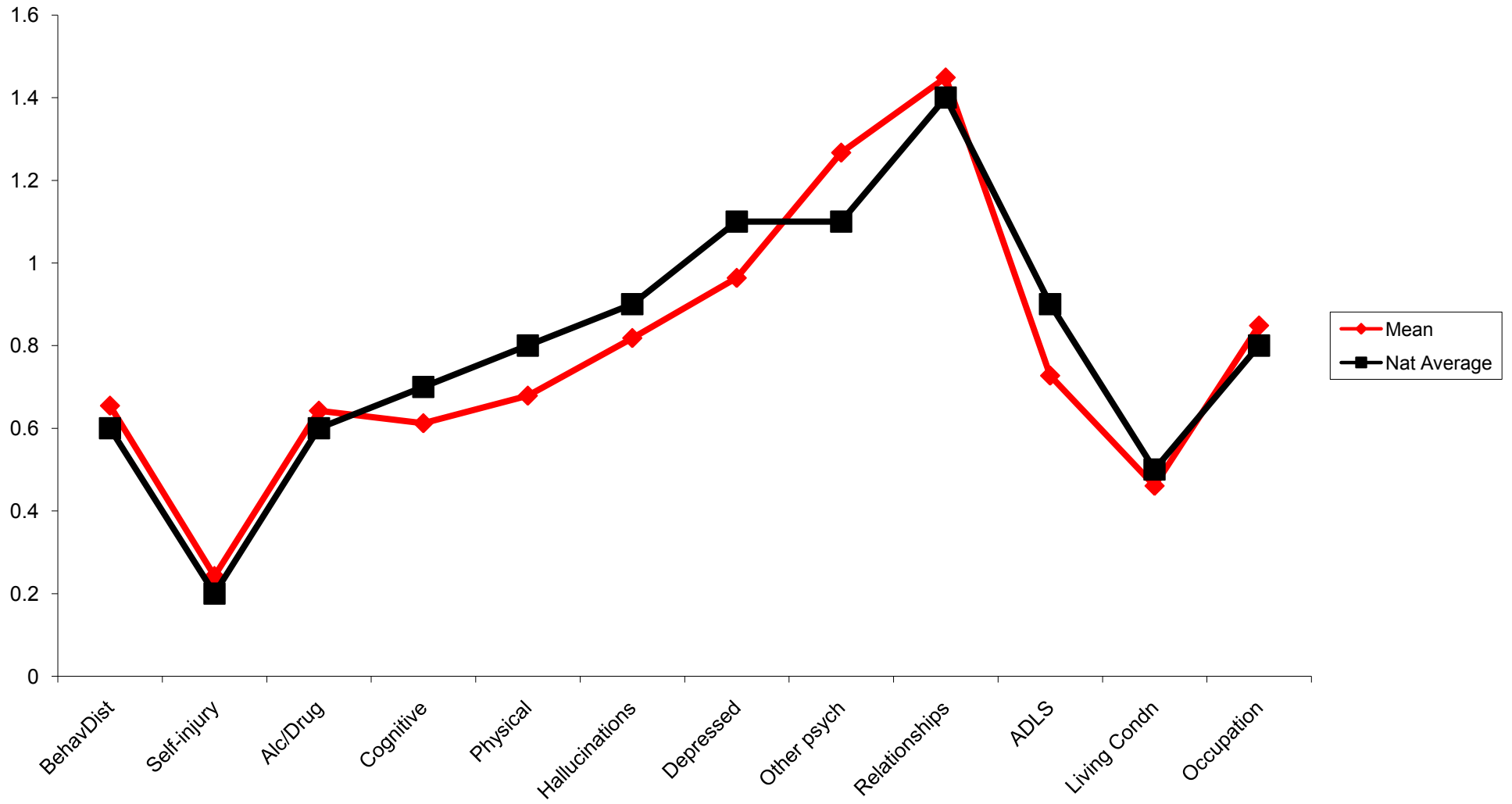
HoNOS Collections



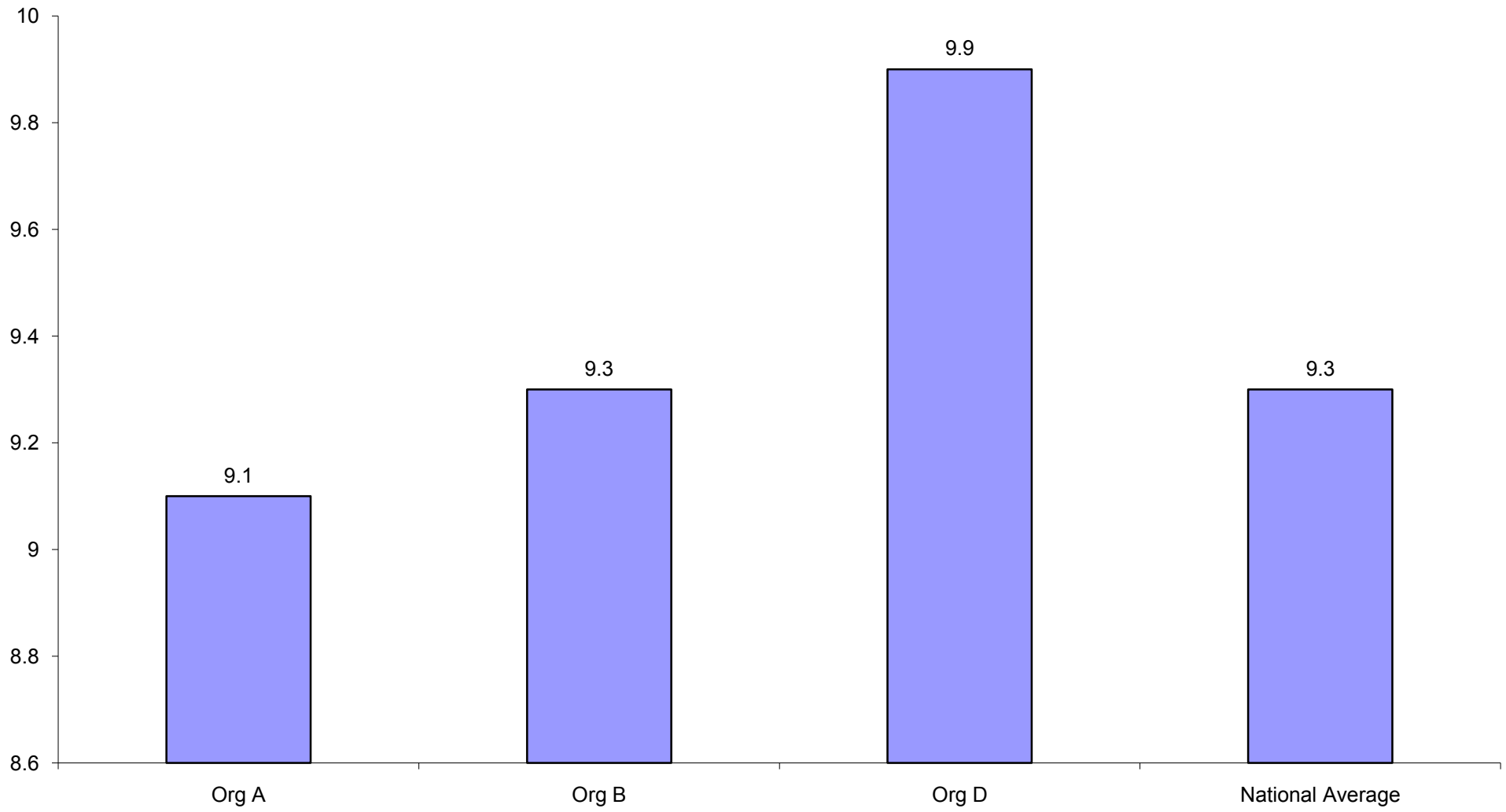
Admission HoNOS Profile All Orgs



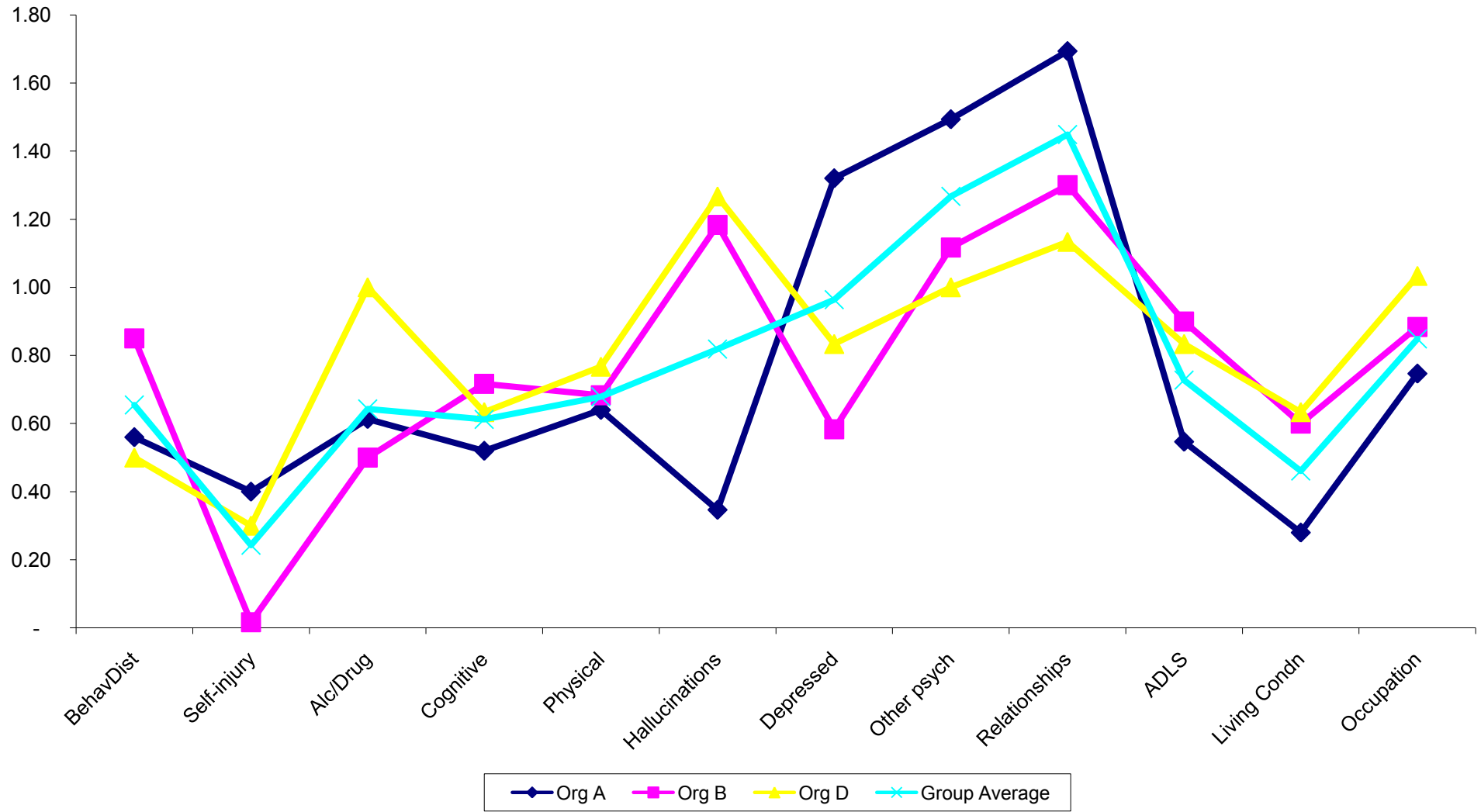
Review HoNOS Profile All Orgs



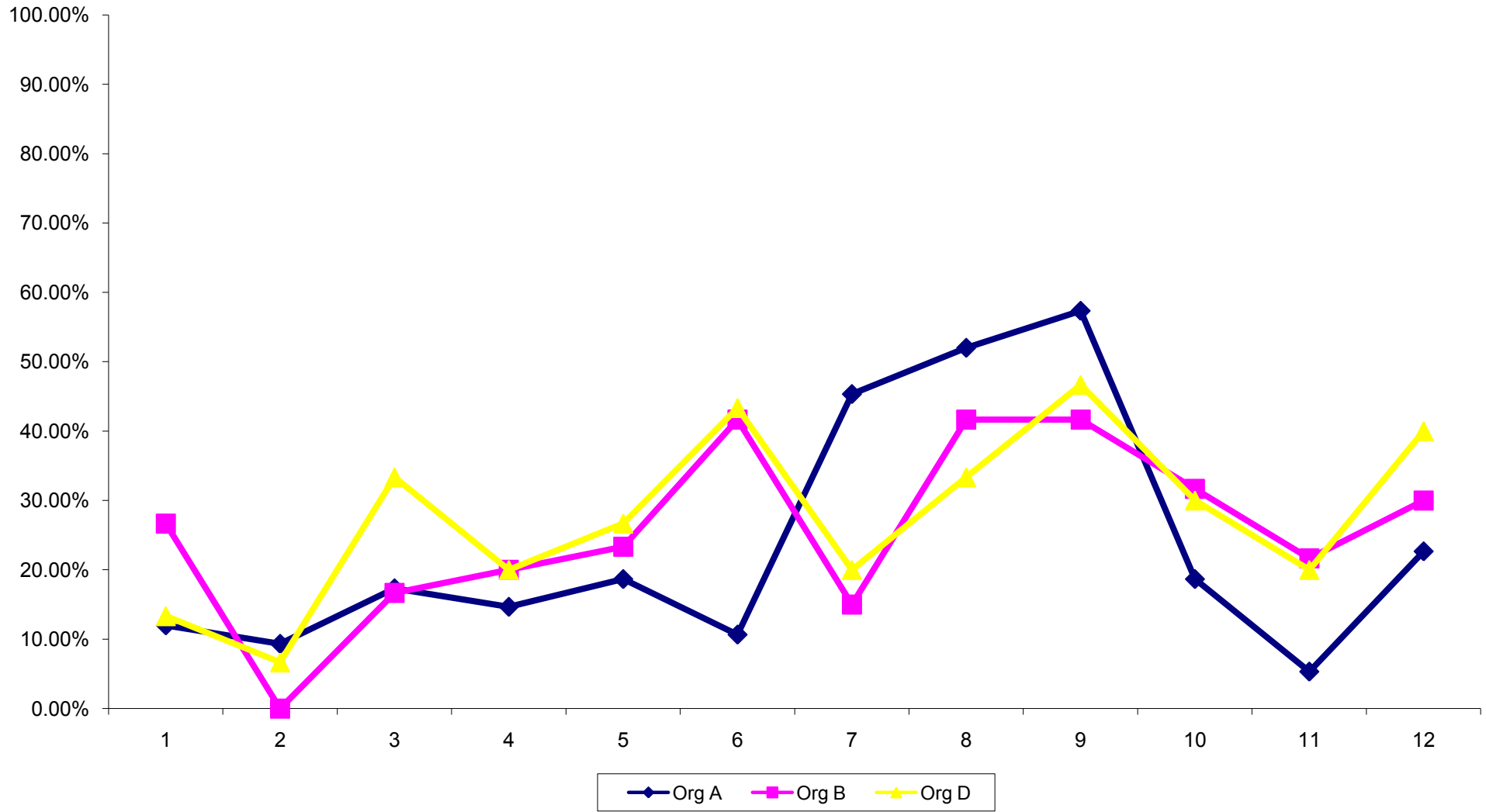
HoNOS Total Score



HoNOS Organisational Comparison



Percentage Clinically Significant Ratings



SOURCE DATA

		Org A		Org B		Org D		Org C
Count		143		110		43		52

Gender	Count	Org A	Count	Org B	Count	Org D	Count	Org C
Female	20	14.0%	16	14.5%	1	2.3%	8	15.4%
Male	122	85.3%	94	85.5%	42	97.7%	44	84.6%
Missing	1	0.7%	0	0.0%	0	0.0%	0	0.0%

Forum - 23 November 2006	Count	Org A	Count	Org B	Count	Org D	Count	Org C
15 - 24	11	7.7%	14	12.7%	8	18.6%	4	7.7%
25 - 34	38	26.6%	54	49.1%	22	51.2%	19	36.5%
35 - 44	35	24.5%	29	26.4%	8	18.6%	12	23.1%
45 - 54	38	26.6%	6	5.5%	5	11.6%	10	19.2%
55 - 64	16	11.2%	5	4.5%	0	0.0%	4	7.7%
65+	5	3.5%	2	1.8%	0	0.0%	3	5.8%

Major Index Offence	Count	Org A	Count	Org B	Count	Org D	Count	Org C
Acts intended to cause injury	19	13.3%	33	30.0%	14	32.6%	14	26.9%
Homicide and attempted homicide	34	23.8%	31	28.2%	14	32.6%	16	30.8%
Missing	0	0.0%	16	14.5%	0	0.0%	7	13.5%
Offences against justice procedures, Govt & Security	1	0.7%	0	0.0%	0	0.0%	0	0.0%
Other	37	25.9%	6	5.5%	1	2.3%	1	1.9%
Property damage	6	4.2%	5	4.5%	3	7.0%	3	5.8%
Road traffic and motor vehicle regulatory offences	1	0.7%	1	0.9%	0	0.0%	0	0.0%
Robbery, extortion related offences	2	1.4%	4	3.6%	2	4.7%	4	7.7%
Sexual related offences	40	28.0%	13	11.8%	5	11.6%	7	13.5%
Theft	3	2.1%	0	0.0%	2	4.7%	0	0.0%
Unlawful break and enter, burglary	0	0.0%	1	0.9%	2	4.7%	0	0.0%

SOURCE DATA

Most serious known offence	Count	Org A	Count	Org B	Count	Org D	Count	Org C
Acts intended to cause injury	18	12.6%	33	30.0%	15	34.9%	14	26.9%
Homicide and attempted homicide	39	27.3%	33	30.0%	14	32.6%	16	30.8%
Missing	1	0.7%	11	10.0%	0	0.0%	7	13.5%
Offences against justice procedures, Govt & Security	0	0.0%	1	0.9%	0	0.0%	0	0.0%
Other	34	23.8%	7	6.4%	1	2.3%	1	1.9%
Property damage	4	2.8%	3	2.7%	0	0.0%	2	3.8%
Road traffic and motor vehicle regulatory offences	1	0.7%	1	0.9%	0	0.0%	0	0.0%
Robbery, extortion related offences	3	2.1%	6	5.5%	3	7.0%	5	9.6%
Sexual related offences	41	28.7%	15	13.6%	7	16.3%	7	13.5%
Theft	2	1.4%	0	0.0%	1	2.3%	0	0.0%
Unlawful break and enter, burglary	0	0.0%	0	0.0%	2	4.7%	0	0.0%

Primary Diagnosis	Count	Org A	Count	Org B	Count	Org D	Count	Org C
F10- F19 Mental and Behavioural Disorders due to psychoactive substances	0	0.0%	0	0.0%	3	7.0%	0	0.0%
F20-29 Schizophrenia, Schizotypal and Delusional Disorders	55	38.5%	84	76.4%	34	79.1%	41	78.8%
F30-39 Mood Disorders	10	7.0%	7	6.4%	1	2.3%	3	5.8%
F40-49 Stress Related Disorders	2	1.4%	0	0.0%	0	0.0%	0	0.0%
F60-69 Adult Personality Disorders	34	23.8%	3	2.7%	3	7.0%	1	1.9%
F70-79 Mental Retardation	0	0.0%	5	4.5%	0	0.0%	1	1.9%
Missing	0	0.0%	8	7.3%	0	0.0%	0	0.0%
Other	42	29.4%	3	2.7%	2	4.7%	6	11.54%

Co-occurring Mental Health Diagnoses	Count	Org A	Count	Org B	Count	Org D	Count	Org C
Missing	1	0.7%	7	6.4%	0	0.0%	0	0.0%
No	100	69.9%	86	78.2%	18	41.9%	38	73.1%
Yes	42	29.4%	17	15.5%	25	58.1%	14	26.9%

Co-occurring substance Abuse	Count	Org A	Count	Org B	Count	Org D	Count	Org C
Missing	0	0.0%	6	5.5%	0	0.0%	0	0.0%
No	109	76.2%	53	48.2%	20	46.5%	17	32.7%
Yes	34	23.8%	51	46.4%	23	53.5%	35	67.3%

Legal Status	Count	Org A	Count	Org B	Count	Org D	Count	Org C
Bail	3	2.1%	2	1.8%	2	4.7%	1	1.9%
CMLA (or equivalent)	33	23.1%	63	57.3%	10	23.3%	17	32.7%
Community Based Order (court ordered)	22	15.4%	1	0.9%	4	9.3%	0	0.0%
MHA Community Treatment Order	13	9.1%	34	30.9%	3	7.0%	7	13.5%
Missing	0	0.0%	1	0.9%	0	0.0%	0	0.0%
Not subject to any legal order	49	34.3%	7	6.4%	17	39.5%	11	21.2%
Other	5	3.5%	2	1.8%	3	7.0%	13	25.0%
Parole	18	12.6%	0	0.0%	4	9.3%	3	5.8%

SOURCE DATA

Previous Episode/s of Care	Count	Org A	Count	Org B	Count	Org D	Count	Org C
Missing	0	0.0%	0	0.0%	0	0.0%	1	1.9%
No	75	52.4%	26	23.6%	9	20.9%	51	98.1%
Yes	68	47.6%	84	76.4%	34	79.1%	0	0.0%

Model of Care	Count	Org A	Count	Org B	Count	Org D	Count	Org C
Missing	3	2.1%	2	1.8%	0	0.0%	0	0.0%
Type 1	110	76.9%	1	0.9%	37	86.0%	0	0.0%
Type 2	29	20.3%	16	14.5%	3	7.0%	49	94.2%
Type 3	0	0.0%	61	55.5%	1	2.3%	3	5.8%
Type 4	1	0.7%	30	27.3%	2	4.7%	0	0.0%

Referral source	Count	Org A	Count	Org B	Count	Org D	Count	Org C
Adult Parole Board	3	2.1%	0	0.0%	1	2.3%	5	9.6%
Area Mental Health Services	20	14.0%	106	96.4%	7	16.3%	28	53.8%
Community Corrections	26	18.2%	0	0.0%	1	2.3%	2	3.8%
Court	7	4.9%	0	0.0%	1	2.3%	0	0.0%
Intra-agency	16	11.2%	0	0.0%	24	55.8%	3	5.8%
Missing	2	1.4%	0	0.0%	0	0.0%	0	0.0%
Other	61	42.7%	3	2.7%	0	0.0%	13	25.0%
Prison Services	8	5.6%	1	0.9%	9	20.9%	1	1.9%

Indigenous Australian?	Count	Org A	Count	Org B	Count	Org D	Count	Org C
No	123	86.01%	95	86.36%	36	83.72%	45	86.54%
Yes	20	13.99%	15	13.64%	7	16.28%	7	13.46%

Country of Birth	Count	Org A	Count	Org B	Count	Org D	Count	Org C
Australia	120	83.9%	91	82.7%	32	74.4%	43	82.7%
England	3	2.1%	2	1.8%	3	7.0%	0	0.0%
Germany	0	0.0%	1	0.9%	0	0.0%	0	0.0%
Greece	1	0.7%	0	0.0%	0	0.0%	0	0.0%
Italy	2	1.4%	0	0.0%	0	0.0%	1	1.9%
Missing	1	0.7%	0	0.0%	0	0.0%	1	1.9%
New Zealand	4	2.8%	8	7.3%	1	2.3%	0	0.0%
Other	11	7.7%	5	4.5%	7	16.3%	5	9.6%
Philippines	0	0.0%	2	1.8%	0	0.0%	0	0.0%
Viet Nam	1	0.7%	1	0.9%	0	0.0%	2	3.8%

SOURCE DATA

English Main Language	Count	Org A	Count	Org B	Count	Org D	Count	Org C
Missing	0	0.0%	3	2.7%	0	0.0%	1	1.9%
no	5	3.5%	0	0.0%	1	2.3%	6	11.5%
Yes	138	96.5%	107	97.3%	42	97.7%	45	86.5%

Interpreter Required	Count	Org A	Count	Org B	Count	Org D	Count	Org C
Missing	0	0.0%	0	0.0%	0	0.0%	46	88.46%
No	139	97.2%	110	100.0%	43	100.0%	6	11.54%
Yes	4	2.8%	0	0.0%	0	0.0%	0	0.00%

Collection Occasions	Count	Org A	Count	Org B	Count	Org D	Count	Org C
Admission	10	7.0%	20	18.2%	3	7.0%	0	0.0%
Review	88	61.5%	62	56.4%	32	74.4%	0	0.0%
Missing	45	31.47%	28	25.5%	8	18.6%	52	100.0%

Admission HoNOS N=31	Mean	Nat Average
BehavDist	1.42	0.9
Self-injury	0.45	0.6
Alc/Drug	1.03	0.9
Cognitive	0.74	0.7
Physical	0.55	0.7
Hallucinations	0.58	0.7
Depressed	0.94	1.7
Other psych	1.39	1.5
Relationships	1.65	1.5
ADLS	1.00	0.9
Living Condn	0.94	0.6
Occupation	1.23	0.9

Review HoNOS N= 165	Mean	Nat Average
BehavDist	0.65	0.6
Self-injury	0.24	0.2
Alc/Drug	0.64	0.6
Cognitive	0.61	0.7
Physical	0.68	0.8
Hallucinations	0.82	0.9
Depressed	0.96	1.1
Other psych	1.27	1.1
Relationships	1.45	1.4
ADLS	0.73	0.9
Living Condn	0.46	0.5
Occupation	0.85	0.8

SOURCE DATA

Review HoNOS by Organisation N= 165	Org A	Org B	Org D	Group Average
Count	75	60	30	
BehavDist	0.56	0.85	0.50	0.65
Self-injury	0.40	0.02	0.30	0.24
Alc/Drug	0.61	0.50	1.00	0.64
Cognitive	0.52	0.72	0.63	0.61
Physical	0.64	0.68	0.77	0.68
Hallucinations	0.35	1.18	1.27	0.82
Depressed	1.32	0.58	0.83	0.96
Other psych	1.49	1.12	1.00	1.27
Relationships	1.69	1.30	1.13	1.45
ADLS	0.55	0.90	0.83	0.73
Living Condn	0.28	0.60	0.63	0.46
Occupation	0.75	0.88	1.03	0.85

Time Since Start	N	Mean	Std. Deviation	Median	Minimum	Maximum
Org A	128	680.42	859	379.5	1	4330
Org B	110	278.32	332	149.5	3	1410
Org C	52	103.37	67	80.5	22	290
Org D	43	754.86	706	506	0	2737
Group Average	333	467.10	666	191	0	4330

Time Since Last Contact	N	Mean	Std. Deviation	Median	Minimum	Maximum
Org A	134	25.90	61	7	0	379
Org B	104	46.98	55	28.5	0	218
Org C	52	95.15	63	79.5	4	255
Org D	43	5.81	8	3	0	39
Group Average	333	40.71	61	15	0	379

HoNOS Clinically Significant Ratings	Count	Org A	Count	Org B	Count	Org D
Count		75		60		30
BehavDist	9	12.0%	16	26.7%	4	13.3%
Self-injury	7	9.3%	0	0.0%	2	6.7%
Alc/Drug	13	17.3%	10	16.7%	10	33.3%
Cognitive	11	14.7%	12	20.0%	6	20.0%
Physical	14	18.7%	14	23.3%	8	26.7%
Hallucinations	8	10.7%	25	41.7%	13	43.3%
Depressed	34	45.3%	9	15.0%	6	20.0%
Other psych	39	52.0%	25	41.7%	10	33.3%
Relationships	43	57.3%	25	41.7%	14	46.7%
ADLS	14	18.7%	19	31.7%	9	30.0%
Living Condn	4	5.3%	13	21.7%	6	20.0%
Occupation	17	22.7%	18	30.0%	12	40.0%

Type 1 Forensic service undertakes face to face contact and has primary responsibility for management of consumer, include case management, medical management, psychological treatment etc.)

Type 2 Forensic service provides consultation-liaison service (Assessment and Report) which is time limited and includes face to face contact. Primary responsibility for management of consumer rests with another service provider.

Type 3 Forensic service provides consultation-liaison service (Assessment and Report) which is time limited but DOES NOT include face to face contact, Primary responsibility for management of consumer rests with another service provider.

Type 4 Forensic service provides support, advice to a service provider. There is NO face to face contact with the consumer and no time limit, primary responsibility for management of consumer rests with another service provider.