



AMHOCN

Australian Mental Health Outcomes and Classification Network

'Sharing Information to Improve Outcomes'

An Australian Government funded initiative

Child & Adolescent National Outcomes & Casemix Collection Standard Reports

1st Edition, Version 1.1

May 2005



A joint Australian, State and
Territory Government Initiative

Document Information

Title	Child & Adolescent National Outcomes & Casemix Collection Standard Reports. 1 st Edition
Version	1.1
File	Child and Adolescent Standard Reports 20050515.doc

Suggested citation for this document

Australian Mental Health Outcomes and Classification Network (2005). *Child & Adolescent National Outcomes & Casemix Collection Standard Reports. 1st Edition, Version 1.1*. Brisbane, Queensland.

Document History

Version	Date	Details
1.0	4 March 2005	Published on http://www.mhnocc.org
1.1	15 May 2005	Published on http://www.mhnocc.org

What is Australian Mental Health Outcomes and Classification Network?

The Australian Mental Health Outcomes and Classification Network (AMHOCN) was established by the Australian Government in December 2003 to provide leadership to the mental health sector to support the sustainable implementation of the outcomes and casemix collection as part of routine clinical practice. It aims to support states and territories and to work collaboratively with the mental health sector to achieve the vision of the introduction of outcomes and casemix measures. AMHOCN consists of three components: a data bureau responsible for receiving and processing information; an analysis and reporting component providing analysis and reports of submitted data; and a training and service development component supporting training in the measures and their use for clinical practice, service management and development purposes. Currently, the Australian Government has contracted the following organisations to undertake these roles: Strategic Data Pty Ltd, (data bureau); The University of Queensland (analysis and reporting); The NSW Institute of Psychiatry (training and service development). In February 2005, an AMHOCN State Liaison Manager role was established to coordinate activities between the state and territory health authorities and the AMHOCN components. The Australian Government has contracted Allen Morris-Yates to undertake that role. Further information regarding AMHOCN can be found at <http://www.mhnocc.org>.

Acknowledgments

This report has been produced by Philip Burgess, Jane Pirkis, Allen Morris-Yates, Tim Coombs, Adam Clarke, David Jones-Ellis and Brad Bowman of AMHOCN with the assistance of Bill Buckingham (Principal, Buckingham & Associates Pty Ltd) in his capacity as consultant to the Australian Government Department of Health & Ageing.

This report is based on the extensive work undertaken by many people working in Australia's public mental health services, including consumers, carers, clinicians, service managers, who are implementing an outcomes focus within their local services. Our acknowledgment is extended to all these individuals. Acknowledgement is also made of the efforts by staff within the various mental health branches in each state and territory health department who have coordinated the data collections and reporting arrangements.

Feedback regarding Version 1.0 was received from members of the Child & Adolescent, Adult and Older Persons Mental Health Expert Groups, representatives on the Australian Health Ministers' Advisory Council National Mental Health Working Group Information Strategy Committee and contributors to the on-line Mental Health National Outcomes and Casemix Collection Forum. Their valuable suggestions and observations have informed revisions to the original reports and are gratefully acknowledged.

Feedback

Comments on the document are welcomed. Readers are encouraged to submit comments via the on-line NOCC forum at <http://www.mhnocc.org/forum/>. Alternatively, comments can be forwarded to:

Professor Philip Burgess, School of Population Health, The University of Queensland,
Locked Bag 500, Richlands, QLD 4077. email – p.burgess@uq.edu.au

Table of Contents

Section 1: User’s Guide.....	1
Preamble.....	2
Scope of the first edition of NOCC Standard Reports.....	2
Caveats.....	3
Table 1: Frequency Distribution of Reported Collection Occasions by Financial Year for All Jurisdictions.....	4
Key features of the national protocol.....	5
Understanding the relationship among Collection Occasions, Periods of Care & Episodes of Care.....	6
Identifying valid sequences of Collection Occasions.....	7
Figure 1: Representation of a valid NOCC sequence with 2 Collection Occasions – Any Admission > Any Discharge.....	8
Figure 2: Representation of an invalid NOCC sequence with 2 Collection Occasions – Any Admission > Any Admission.....	8
Figure 3: Representation of a valid NOCC sequence with 3 Collection Occasions.....	9
Figure 4: Representation of an invalid NOCC sequence with 3 Collection Occasions.....	9
Figure 5: Representation of a valid NOCC sequence with 3 Collection Occasions for an incomplete Episode of Mental Health Care.....	10
Figure 6: Representation of a valid NOCC sequence with 3 Collection Occasions for an incomplete Episode of Mental Health Care.....	10
Data integrity considerations.....	11
Table 2: Completion criteria for each of the NOCC measures.....	12
Overview of the first edition NOCC Standard Reports.....	13
Understanding the key to NOCC Standard Report table numbering.....	13
Table 3: NOCC Standard Report numbering scheme.....	13
Standard Reports for Collection Occasions.....	14
Common Tables across the Collection Age Groups.....	14
Specific Tables for Child & Adolescent Collection Age Group.....	15
Specific Tables for Adult & Older Persons Collection Age Group.....	16
Standard Reports for Periods of Care & Episodes of Care.....	16
Understanding effect sizes.....	18
What does the size of the effect size mean?.....	18
Figure 7: Distribution of Standardised Change Scores.....	19
Table 4: Reference table of effect size scores to standard normal cumulative distribution.....	20
References.....	21
Attachments.....	22
Attachment 1: Data to be collected at each Collection Occasion within each Mental Health Service Setting, for consumers in each Age Group.....	23
Attachment 2: Data collection requirements under four episode scenarios.....	24
Section 2: Standard Reports.....	25
Collection Occasion Standard Reports.....	26
Table 1.1.1: Summary of the Nature and Volume of NOCC Collection Occasion Data by Mental Health Service Setting for each Reason for Collection for all data reported to April 2005 for Children and Adolescents with all Mental Health Summary Diagnostic Groups for all Demographic Groups within Age Group for all Jurisdictions.....	27

Table 1.1.2: Core Clinical Summary Score Profiles by Mental Health Service Setting for each Reason for Collection for all data reported to April 2005 for Children and Adolescents with all Mental Health Summary Diagnostic Groups for all Demographic Groups within Age Group for all Jurisdictions	28
Table 1.1.3: Core Consumer Summary Score Profiles by Mental Health Service Setting for each Reason for Collection for all data reported to April 2005 for Children and Adolescents with all Mental Health Summary Diagnostic Groups for all Demographic Groups within Age Group for all Jurisdictions	29
Table 1.1.4.1: Distribution of HoNOSCA Total Scores by Mental Health Service Setting for each Reason for Collection for all data reported to April 2005 for Children and Adolescents with all Mental Health Summary Diagnostic Groups for all Demographic Groups within Age Group for all Jurisdictions	30
Table 1.1.4.2: HoNOSCA Summary Score Profiles by Mental Health Service Setting for each Reason for Collection for all data reported to April 2005 for Children and Adolescents with all Mental Health Summary Diagnostic Groups for all Demographic Groups within Age Group for all Jurisdictions	31
Table 1.1.5.1: HoNOSCA Item Rating Profiles (Number of Valid Observations) by Mental Health Service Setting for each Reason for Collection for all data reported to April 2005 for Children and Adolescents with all Mental Health Summary Diagnostic Groups for all Demographic Groups within Age Group for all Jurisdictions	32
Table 1.1.5.2: HoNOSCA Item Rating Profiles (Percentage Clinically Significant ¹) by Mental Health Service Setting for each Reason for Collection for all data reported to April 2005 for Children and Adolescents with all Mental Health Summary Diagnostic Groups for all Demographic Groups within Age Group for all Jurisdictions	33
Table 1.1.5.3: HoNOSCA Item Rating Profiles (Means) by Mental Health Service Setting for each Reason for Collection for all data reported to April 2005 for Children and Adolescents with all Mental Health Summary Diagnostic Groups for all Demographic Groups within Age Group for all Jurisdictions	34
Table 1.1.5.4: HoNOSCA Item Rating Profiles (Standard Deviations) by Mental Health Service Setting for each Reason for Collection for all data reported to April 2005 for Children and Adolescents with all Mental Health Summary Diagnostic Groups for all Demographic Groups within Age Group for all Jurisdictions	35
Table 1.1.6: FIHS Item Rating Profiles (% Positively Identified) by Mental Health Service Setting for each Reason for Collection for all data reported to April 2005 for Children and Adolescents with all Mental Health Summary Diagnostic Groups for all Demographic Groups within Age Group for all Jurisdictions	36
Table 1.1.7.1: SDQ – Parent Version Summary Score Profiles by Mental Health Service Setting for each Reason for Collection for all data reported to April 2005 for Children and Adolescents with all Mental Health Summary Diagnostic Groups for all Demographic Groups within 4 – 10 years for all Jurisdictions	37
Table 1.1.7.2: SDQ – Parent Version Summary Score Profiles by Mental Health Service Setting for each Reason for Collection for all data reported to April 2005 for Children and Adolescents with all Mental Health Summary Diagnostic Groups for all Demographic Groups within 11 – 17 years for all Jurisdictions.....	38
Table 1.1.7.3: SDQ – Youth Version Summary Score Profiles by Mental Health Service Setting for each Reason for Collection for all data reported to April 2005 for Children and Adolescents with all Mental Health Summary Diagnostic Groups for all Demographic Groups within 11 – 17 years for all Jurisdictions.....	39
Periods of Care Standard Reports	40
Table 1.2.1: Summary of the Nature and Volume of NOCC Periods of Care Data by Mental Health Service Setting for all data reported to April 2005 for Children and Adolescents with all Mental Health Summary Diagnostic Groups for all Demographic Groups within Age Group for all Jurisdictions	41
Table 1.2.2.1: Distribution of Elapsed Days from Period Start to Period End for NOCC Periods of Care by Psychiatric Inpatient Mental Health Service Setting for all data reported to April 2005 for Children and Adolescents with all Mental Health Summary Diagnostic Groups for all Demographic Groups within Age Group for all Jurisdictions	42

Table 1.2.2.2: Distribution of Elapsed Days from Period Start to Period End for NOCC Periods of Care by Community Residential Mental Health Service Setting for all data reported to April 2005 for Children and Adolescents with all Mental Health Summary Diagnostic Groups for all Demographic Groups within Age Group for all Jurisdictions	43
Table 1.2.2.3: Distribution of Elapsed Days from Period Start to Period End for NOCC Periods of Care by Ambulatory Mental Health Service Setting for all data reported to April 2005 for Children and Adolescents with all Mental Health Summary Diagnostic Groups for all Demographic Groups within Age Group for all Jurisdictions	44
Table 1.2.3.1: Completion Rates of the Core Clinical and Self-Report Measures for NOCC Periods of Care Data by Psychiatric Inpatient Mental Health Service Setting for all data reported to April 2005 for Children and Adolescents with all Mental Health Summary Diagnostic Groups for all Demographic Groups within Age Group for all Jurisdictions	45
Table 1.2.3.2: Completion Rates of the Core Clinical and Self-Report Measures for NOCC Periods of Care Data by Community Residential Mental Health Service Setting for all data reported to April 2005 for Children and Adolescents with all Mental Health Summary Diagnostic Groups for all Demographic Groups within Age Group for all Jurisdictions	46
Table 1.2.3.3: Completion Rates of the Core Clinical and Self-Report Measures for NOCC Periods of Care Data by Ambulatory Mental Health Service Setting for all data reported to April 2005 for Children and Adolescents with all Mental Health Summary Diagnostic Groups for all Demographic Groups within Age Group for all Jurisdictions.....	47
Table 1.2.4.1: HoNOSCA Change Scores for NOCC Periods of Care by Psychiatric Inpatient Mental Health Service Setting for all data reported to April 2005 for Children and Adolescents with all Mental Health Summary Diagnostic Groups for all Demographic Groups within Age Group for all Jurisdictions	48
Table 1.2.4.2: HoNOSCA Change Scores for NOCC Periods of Care by Community Residential Mental Health Service Setting for all data reported to April 2005 for Children and Adolescents with all Mental Health Summary Diagnostic Groups for all Demographic Groups within Age Group for all Jurisdictions	49
Table 1.2.4.3: HoNOSCA Change Scores for NOCC Periods of Care by Ambulatory Mental Health Service Setting for all data reported to April 2005 for Children and Adolescents with all Mental Health Summary Diagnostic Groups for all Demographic Groups within Age Group for all Jurisdictions	50
Episodes of Care Standard Reports.....	51
Table 1.3.1: Summary of the Nature and Volume of NOCC Episodes of Care Data by Mental Health Service Setting for all data reported to April 2005 for Children and Adolescents with all Mental Health Summary Diagnostic Groups for all Demographic Groups within Age Group for all Jurisdictions	52
Table 1.3.2.1: Distribution of Elapsed Days from Episode Start to Episode End for NOCC Episodes of Care by Psychiatric Inpatient Mental Health Service Setting for all data reported to April 2005 for Children and Adolescents with all Mental Health Summary Diagnostic Groups for all Demographic Groups within Age Group for all Jurisdictions.....	53
Table 1.3.2.2: Distribution of Elapsed Days from Episode Start to Episode End for NOCC Episodes of Care by Community Residential Mental Health Service Setting for all data reported to April 2005 for Children and Adolescents with all Mental Health Summary Diagnostic Groups for all Demographic Groups within Age Group for all Jurisdictions	54
Table 1.3.2.3: Distribution of Elapsed Days from Episode Start to Episode End for NOCC Episodes of Care by Ambulatory Mental Health Service Setting for all data reported to April 2005 for Children and Adolescents with all Mental Health Summary Diagnostic Groups for all Demographic Groups within Age Group for all Jurisdictions	55
Table 1.3.3.1: Completion Rates of the Core Clinical and Self-Report Measures for NOCC Episodes of Care Data by Psychiatric Inpatient Mental Health Service Setting for all data reported to April 2005 for Children and Adolescents with all Mental Health Summary Diagnostic Groups for all Demographic Groups within Age Group for all Jurisdictions	56
Table 1.3.3.2: Completion Rates of the Core Clinical and Self-Report Measures for NOCC Episodes of Care Data by Community Residential Mental Health Service Setting for all data reported to April 2005 for Children and Adolescents with all Mental Health Summary Diagnostic Groups for all Demographic Groups within Age Group for all Jurisdictions	57

Table 1.3.3.3: Completion Rates of the Core Clinical and Self-Report Measures for NOCC Episodes of Care Data by Ambulatory Mental Health Service Setting for all data reported to April 2005 for Children and Adolescents with all Mental Health Summary Diagnostic Groups for all Demographic Groups within Age Group for all Jurisdictions.....	58
Table 1.3.4.1: HoNOSCA Change Scores for NOCC Episodes of Care by Psychiatric Inpatient Mental Health Service Setting for all data reported to April 2005 for Children and Adolescents with all Mental Health Summary Diagnostic Groups for all Demographic Groups within Age Group for all Jurisdictions	59
Table 1.3.4.2: HoNOSCA Change Scores for NOCC Episodes of Care by Community Residential Mental Health Service Setting for all data reported to April 2005 for Children and Adolescents with all Mental Health Summary Diagnostic Groups for all Demographic Groups within Age Group for all Jurisdictions	60
Table 1.3.4.3: HoNOSCA Change Scores for NOCC Episodes of Care by Ambulatory Mental Health Service Setting for all data reported to April 2005 for Children and Adolescents with all Mental Health Summary Diagnostic Groups for all Demographic Groups within Age Group for all Jurisdictions	61

Section 1: User's Guide

Preamble

This *User's Guide* describes the first edition of *National Outcomes and Casemix Collection (NOCC) Standard Reports* prepared by the Australian Mental Health Outcomes and Classification Network (AMHOCN). It has been prepared for readers who are familiar with the current versions of the *Technical specification of State and Territory reporting requirements for the outcomes and casemix components of 'Agreed Data' (Version 1.50)* and the *NOCC Clinician and Self-Report Measures Overview (Version 1.50)*. Both of these source documents are available at:

<http://www.mhnocc.org/resources/> .

Version 1.1 of the first edition of *National Outcomes and Casemix Collection (NOCC) Standard Reports* **replaces** Version 1.0 that was published 4 March 2005. Version 1.1 includes additional NOCC data reported by some jurisdictions following publication of Version 1.0. The current version includes a new set of Tables (n.1.4.1 - *Distribution of HoNOSCA / HONOS / HoNOS65+ Total Scores by Mental Health Service Setting for each Reason for Collection for all data reported to April 2005 for each Collection Occasion Age Group with all Mental Health Summary Diagnostic Groups for all Demographic Groups within Age Group for all Jurisdictions*). The original set of Tables n.1.4 has been renumbered to Tables n.1.4.2. Version 1.1 also includes some enhancements to the reporting of some analyses as well as incorporates corrections to minor errors in the original analysis and reporting.

A comprehensive *Reporting Framework* for the NOCC data sets will be available shortly. The *Reporting Framework* will provide more detailed conceptual and technical information than that outlined in this *Users' Guide*.

Scope of the first edition of NOCC Standard Reports

The NOCC data sets allow analysis and reporting from a variety of perspectives. The perspectives can vary as a function of who is the information user (e.g., a policy maker, a service planner, a team leader, an individual clinician, an individual consumer, an academic researcher), what information is required ("What is the profile of consumers at admission to my service?"; "How do these profiles compare with other similar services?"; "Do our consumers have the same outcomes as other similar consumers in other similar services?").

AMHOCN's role with respect to the analysis and reporting of the NOCC data sets is primarily focused at a national level and thus the scope of the current edition of reports is limited to the national, aggregate level.

It is recognised too that more complex and sophisticated questions can be addressed through *partitioning* and *stratifying* the information. A *partition* of the data represents a high-level categorisation, in which the data are organised into a number of groups within which more meaningful questions of the data can be posed. For example, the outcomes and casemix measures are specific to the age group of consumers, at times specific to the service setting and at other times specific to the

reason for collection. These are fundamental partitions (or categories) that are necessary to enable meaningful analysis of the data that is based on like-with-like comparisons. There are other partitions that are desirable – examples include filtering the NOCC data ‘responsible entity’ (jurisdiction, mental health service organisation or service unit). This edition does not include any analysis by non-essential partition factors.

Within a partition, at times it will be useful to ‘drill down’ and further analyse consumer profiles and outcomes by *stratification* factors. For example, the clinical profiles can be stratified by consumers’ gender to answer questions such as: “Is the clinical profile of male consumers the same as female consumers?” or by consumers’ diagnosis to answer questions such as “Are clinical outcomes the same for consumers with schizophrenia versus consumers with affective disorders?” or by consumers’ age – “Do younger consumers have the same clinical profiles as older consumers?”. This edition does not include any analysis findings by stratification factors.

While the first edition of *NOCC Standard Reports* has been designed to meet the information needs of a variety of stakeholders, it is acknowledged that different stakeholders will have different and diverse information requirements that cannot be universally met through a single set of reports. To that end, AMHOCN is developing a user interface that will enable information users to design their own purpose specific reports with a range of partition and stratification factors. It is expected that this facility will be available later in 2005.

The common goal is for all stakeholders to use this information to facilitate service development and clinical quality improvement activities. National level reports can provide jurisdictions and mental health service organisations with baselines against which performance can be evaluated. It is important to note that these baselines will not necessarily reflect best or even appropriate clinical practice. It is anticipated, however, that the current set of reports will also facilitate benchmarking activities that are directed to improve service quality and consumer outcomes. In addition, it is anticipated that the national level reports will provide clinicians and consumers with reference data that promote informed understanding and interpretation of individual consumer’s clinical profiles and patterns of service utilisation.

The standard clinical measures that form the NOCC can be used for the purpose of measuring consumer outcomes or casemix classification, or both. The first edition of the *NOCC Standard Reports* is primarily focused on reporting from the perspective of measuring consumers’ mental health status and clinical outcomes. Later editions will be extended to address in more detail case complexity and casemix classification.

Caveats

1. The scope of the first edition NOCC standard reports includes all NOCC data reported by Jurisdictions to the Australian Government since the beginning of

the national collection in 2000-2001. All jurisdictions are represented in the current set of analyses and all have submitted data covering 2003-2004. Data for Q1 & Q2 of 2004-2005 for one jurisdiction and data for Q1, Q2 & Q3 of 2004-2005 for two jurisdictions were available and included in these analyses. These data have been validated by AMHOCN and are current as at 28 April 2005.

2. Whereas all jurisdictions are represented in the current set of analyses, not all jurisdictions have reported Consumer Self-Report measures for either some or all of three collection occasion age groups. In the calculation of completion rates for the Consumer Self-Report measures, only collection occasions since jurisdictions have reported such measures are included.
3. The reporting periods cover the initial experiences of all jurisdictions with respect to the implementation of routine outcome measurement. This is a complex process and the analysis findings need to be interpreted in the light of the variation inherent in the start-up phases of any major, innovative data collection initiative. The following table shows the frequency distribution of reported Collection Occasions by financial year.

Table 1: Frequency Distribution of Reported Collection Occasions by Financial Year for All Jurisdictions		
Financial Year	Reported Collection Occasions	
	n	%
2000-2001	4596	1.2
2001-2002	27772	7.1
2002-2003	77649	19.7
2003-2004	192415	48.9
2004-2005*	90905	23.1
Total	393337	100.0
* One jurisdiction has reported data for Q1 & Q2; two jurisdictions have reported data for Q1, Q2 & Q3.		

4. These aggregate reports provide group statistical information, for example, means, standard deviations, percentiles and effect sizes. The use of 'group' statistics to interpret the mental health status and changes for 'individual' consumers is a complex and sometimes controversial matter. AMHOCN is developing new materials to assist clinicians in those regards.
5. Other work by AMHOCN has highlighted significant issues and variability with respect to the extent to which the national collection has been implemented as intended. These issues of data quality are reflected in this report and should be the focus of ongoing quality improvement activities within services.

6. Variability with respect to adherence to the national protocol occurs at multiple levels – jurisdictional, organisational and at the service unit level. While this variation to the national protocol can be deliberate (for example, some jurisdictions mandate NOCC measures at points of collection where this is not required nationally), analysis and reporting of the NOCC data sets by AMHOCN follows the national protocol.
7. The reports include instances where there are too few observations to reliably estimate some of the statistics reported. Interpretation of the statistics requires initial consideration of whether there are sufficient observations. For simple statistics, such as means and standard deviations, a rule of thumb is that there should be no fewer than 30 observations. For more complex statistics, such as those reported for effect sizes, corrections for small sample sizes have been incorporated in the calculations and are generally reliable where there are at least 10 observations.
8. There are opportunities for jurisdictions to amend earlier submissions of NOCC data in subsequent extractions. This is one reason why data reported for any given period may vary in later data analysis iterations.
9. In addition to updates by jurisdictions, the AMHOCN data validation processes continue to evolve. This is especially the case in relation to the assembly of *Periods of Care* and *Episodes of Care*. More sophisticated sequencing algorithms will result in a greater proportion of NOCC data being retained for analysis and reporting purposes.

Key features of the national protocol

The national protocol prescribes what is collected and when it is collected. Table 4 from Section 7.1.3 of the *NOCC Technical Specification* summarises the protocol and is reproduced at Attachment 1. It is important to note that there has been variation of this national protocol in some jurisdictions.

Of primary significance is the fact that the clinical measures are specific to:

1. the *Collection Occasion Age Group* of the consumer – either Children & Adolescents, or Adults or Older Persons;
2. the *Reason for Collection* – broadly, either Admission, Review or Discharge; and
3. the *Mental Health Service Setting* – either Psychiatric Inpatient, Community Residential or Ambulatory.

These are the fundamental partitions that are used for analysis and reporting in the first edition of NOCC standard reports.

Understanding the relationship among Collection Occasions, Periods of Care & Episodes of Care

An *Episode of Mental Health Care* (EMHC) is a concept defined in the *NOCC Technical Specification* as:

“... a more or less continuous period of contact between a consumer and a Mental Health Service Organisation that occurs within the one Mental Health Service Setting” (Section 5.1.4).

The *NOCC Technical Specification* further notes:

Two business rules apply to episodes of mental health care:

- One episode at a time: While an individual may have multiple episodes of mental health care over the course of their illness, they may be considered as being in only one episode at any given point of time for a particular Mental Health Service Organisation.
- Change of setting = new episode: A new episode is deemed to commence when a person’s care is transferred between inpatient, community residential and ambulatory settings. A change of Mental Health Service Setting therefore marks the end of one episode and the beginning of another (Section 5.1.7).

A *Collection Occasion* is defined as an occasion during an *Episode of Mental Health Care* when the required dataset is to be collected in accordance with a standard protocol. The broad rule is that collection of data is required at both episode start and episode end (see Section 5.2.1).

Figure 1 from Section 5.2.7 of the *NOCC Technical Specification* summarises the data collection points under various episode scenarios and is reproduced at Attachment 2.

In this edition of NOCC standard reports, a distinction is made between *Periods of Care* and *Episodes of Care*. A *Period of Care* occurs between two consecutive Collection Occasions. An *Episode of Care* occurs between the ‘first’ and the ‘last’ Collection Occasions reported within the analysis frame.

It is important to note that, for the purposes of the analyses presented in this edition, *Episodes of Care* have not been exclusively defined as periods bounded by Admission and Discharge Collection Occasions. This is because, for some consumers, their ‘first’ clinical rating was not recorded as an Admission since they were in receipt of ongoing treatment when the national collection was implemented. For other consumers, their ‘last’ clinical rating was not recorded as a Discharge since the ‘episode of care’ was not completed when the NOCC data were reported by the jurisdiction.

Identifying valid sequences of Collection Occasions

In these reports, where the unit of analysis is Collection Occasion, all Collection Occasions that pass AMHOCN's data validation processes are considered valid with respect to analysis and reporting. Where the unit of analysis is either Periods of Care or Episodes of Care, it is necessary to assemble sequences of Collection Occasions.

From the above discussion, it follows that a valid sequence of collection occasions requires a logical ordering of events, for a given consumer who receives mental health services from a given provider, in a particular setting. The initial checks for the validity of the collection occasion sequences require specific relationships among five key fields:

1. Who provided? (i.e., Which mental health service organisation);
2. To whom? (i.e., the consumer);
3. When? (i.e., the date of the Collection Occasion);
4. Where? (i.e., the mental health service setting);
5. Why? (i.e., the reason for collection).

The sequencing process begins with identifying all of the Collection Occasions for a consumer at a mental health service organisation. These are then organised chronologically. Sequences are then evaluated in terms of the logical relations among the reasons for collection (e.g., Admissions precede Reviews which in turn precede Discharge) as well as the setting in which the collection occurred.

In the current edition of *NOCC Standard Reports*, a strict algorithm was implemented where all of a consumer's Collection Occasions at a specific mental health service organisation were excluded from further analysis if there was failure on any single evaluation.

The following figures illustrate some of the issues with respect to the validation of collection occasion sequences. The figures also serve to illustrate the AMHOCN approach to 'counting' *Periods of Care* (namely, consecutive pairs of Collection Occasions within a valid sequence) and *Episodes of Care* (namely, the first and the last Collection Occasions within a valid sequence).

Figure 1: Representation of a valid NOCC sequence with 2 Collection Occasions – Any Admission > Any Discharge

	A_1	D_2
Collection Occasion	<u>θ_1</u>	<u>θ_2</u>
Period of Care	π_1	
Episode of Care	ε_1	
<i>Explanatory Notes</i>		
θ_1	<u>Collection Occasion₁</u>	Admission
θ_2	<u>Collection Occasion₂</u>	Discharge
π_1	<u>Period of Care₁</u>	Any Admission > Any Discharge
ε_1	<u>Episode of Care₁</u>	Any Admission > Any Discharge

Figure 2: Representation of an invalid NOCC sequence with 2 Collection Occasions – Any Admission > Any Admission

	A_1	A_2
Collection Occasion	<u>θ_1</u>	<u>θ_2</u>
Period of Care	-	
Episode of Care	-	
<i>Explanatory Notes</i>		
θ_1	<u>Collection Occasion₁</u>	Admission
θ_2	<u>Collection Occasion₂</u>	Admission

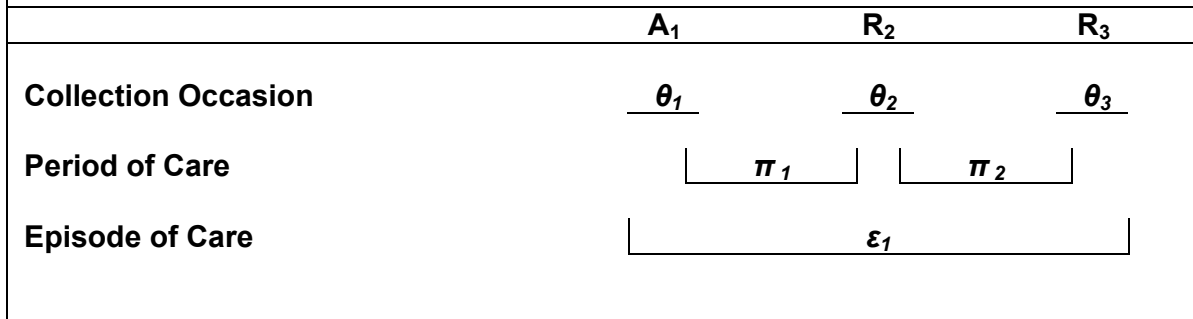
Figure 3: Representation of a valid NOCC sequence with 3 Collection Occasions

	A_1	R_2	D_3
Collection Occasion	<u>θ_1</u>	<u>θ_2</u>	<u>θ_3</u>
Period of Care	π_1		π_2
Episode of Care	ε_1		
<i>Explanatory Notes</i>			
θ_1	<u>Collection Occasion</u> ₁	Admission	
θ_2	<u>Collection Occasion</u> ₂	Review	
θ_3	<u>Collection Occasion</u> ₃	Discharge	
π_1	<u>Period of Care</u> ₁	Any Admission > Any Review	
π_2	<u>Period of Care</u> ₂	Any Review > Any Discharge	
ε_1	<u>Episode of Care</u> ₁	Any Admission > Any Discharge	

Figure 4: Representation of an invalid NOCC sequence with 3 Collection Occasions

	R_1	A_2	D_3
Collection Occasion	<u>θ_1</u>	<u>θ_2</u>	<u>θ_3</u>
Period of Care	-	? π_1	
Episode of Care	-	? ε_1	
<i>Explanatory Notes</i>			
θ_1	<u>Collection Occasion</u> ₁	Review	
θ_2	<u>Collection Occasion</u> ₂	Admission	
θ_3	<u>Collection Occasion</u> ₃	Discharge	
? π_1	<u>Period of Care</u> ₁	Deemed Invalid	
? ε_1	<u>Episode of Care</u> ₁	Deemed Invalid	

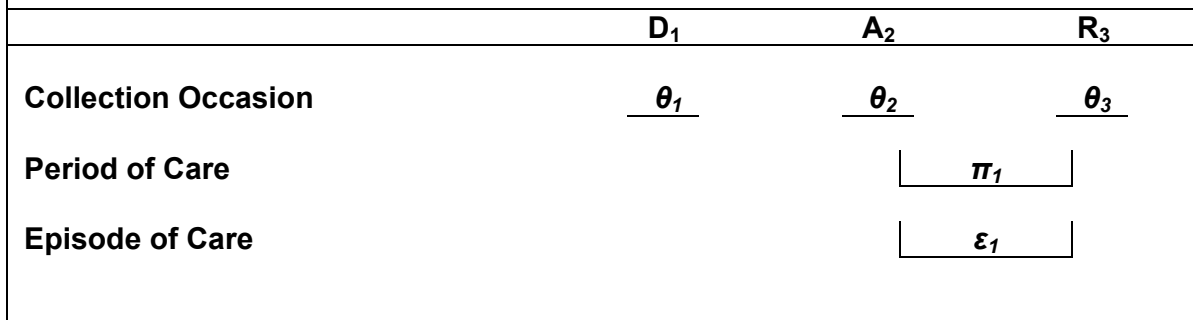
Figure 5: Representation of a valid NOCC sequence with 3 Collection Occasions for an incomplete Episode of Mental Health Care



Explanatory Notes

θ_1	<u>Collection Occasion₁</u>	Admission
θ_2	<u>Collection Occasion₂</u>	Review
θ_3	<u>Collection Occasion₃</u>	Review
π_1	<u>Period of Care₁</u>	Any Admission > Any Review
π_2	<u>Period of Care₂</u>	Any Review > Any Review
ε_1	<u>Episode of Care₁</u>	Any Admission > Any Review

Figure 6: Representation of a valid NOCC sequence with 3 Collection Occasions for an incomplete Episode of Mental Health Care



Explanatory Notes

θ_1	<u>Collection Occasion₁</u>	Discharge
θ_2	<u>Collection Occasion₂</u>	Admission
θ_3	<u>Collection Occasion₃</u>	Review
π_1	<u>Period of Care₁</u>	Any Admission > Any Review
ε_1	<u>Episode of Care₁</u>	Any Admission > Any Review

Data integrity considerations

A major issue for the analysis and reporting of the NOCC measures is to determine when a measure is 'valid' with respect to the clinical ratings provided.

Outcome measures such as the HoNOS family are referred to here as measures (elsewhere, these have been variously referred to as scales, instruments). Some measures comprise multiple components, such as items (these have been variously referred to as scales). Items can be aggregated into subscales and total scores (these have been variously referred to as summary and total scores).

Ratings of items can be described in terms of three mutually exclusive categories:

1. valid 'clinical' ratings that typically indicate levels of problem severity;
2. valid 'non-clinical' ratings that typically indicate reasons why problem severity was not rated; and
3. invalid values such as 'nulls' or values outside of the range for 1 and 2 above.

The validity of a measure is derived from consideration of the validity of the items that comprises that measure. Valid scores can be estimated either when all of the items are clinically valid OR when a sufficient number of items are clinically valid. Two questions require resolution:

1. How many items need to have a valid clinical rating in order for the overall measure to be considered valid?
2. If one or more of the items does not have a valid clinical rating, how does this impact on the scoring of subscale and total scores?

In order to answer these questions, AMHOCN undertook descriptive analyses of the available data. Judgements regarding the validity of a measure were based on several principles. The overarching goal was to minimise potential loss of data via exclusion of partially completed measures and to balance that with the retention of measures that would still enable statistical analysis. While there are sophisticated methods for resolving 'missing data', a further principle was to implement transparent solutions that can be replicated readily at local levels.

The frequency distributions of partially completed measures were examined and thresholds specific to each measure were determined as minimal requirements for analysis. It is important to note that these criteria are relevant for the data available for analysis at April 2005; these criteria may change over time and will be published with each release of national level reports.

The following table shows the criteria used to determine whether a NOCC measure had been validly completed for the purposes of subsequent statistical reporting:

Table 2: Completion criteria for each of the NOCC measures		
NOCC Measure	Age Group	Completion Criteria
HoNOSCA	C&A	At least 11 of the first 13 HoNOSCA items have Valid Clinical Ratings
CGAS	C&A	Any Valid Clinical Rating
FIHS	C&A	At least 6 of the 7 FIHS items have Valid Clinical Ratings
SDQ – all Versions	C&A	At least 20 of the first 25 items have Valid Clinical Ratings
Age	C&A	Aged at least 1 day to less than 25 years inclusive
HoNOS / 65+	A&OP	At least 10 items have Valid Clinical Ratings
LSP-16	A&OP	At least 14 items have Valid Clinical Ratings
FoC	A&OP	Any Valid Clinical Rating
BASIS-32	A&OP	At least 24 items have Valid Clinical Ratings***
K10+	A&OP	At least 9 items have Valid Clinical Ratings
MHI-38	A&OP	At least 30 items have Valid Clinical Ratings
Age	A	Aged between 15 and 110 years inclusive
RUG-ADL	OP	All 4 items have Valid Clinical Ratings
Age	OP	Aged between 55 and 110 years inclusive
Principal Diagnosis	All	Any Valid Mental Health Diagnosis Summary Group
MHLS	All	Either Voluntary or Involuntary Status recorded
Sex	All	Either Male or Female Sex recorded
<i>Explanatory Notes:</i>		
***	BASIS-32 items 2, 3 & 4 only count as one item	
C&A	Child & Adolescent Collection Age Group	
A&OP	Adult AND Older Person Collection Age Group	
A	Adult Collection Age Group	
OP	Older Person Collection Age Group	

These criteria apply to each of the Standard Reports where NOCC measures are further analysed and address the first question, “How many items need to have a valid clinical rating in order for the overall measure to be considered valid?”

In regards to the second question, “If one or more of the items does not have a valid clinical rating, how does this impact on the scoring of subscale and total scores?” Only the valid clinical ratings of the items comprising a measures subscale or total scores were considered. If a component item was ‘missing’, it was treated as contributing ‘0’ to the overall score’. If all of the items comprising a subscale were ‘missing’, then the overall score was set to missing with no valid observations.

This method is not perfect since it results in ‘averages’ that are biased downwards: the fewer items that are completed, the less opportunity exists to achieve a high

score. For example, the maximum of a HoNOS with only 10 completed items is 40. While the reporting of statistics could have been restricted to instances where there were no missing data, that method would have introduced other biases – specifically, the means and standard deviations only apply to populations where there are no missing data and the statistics will be based on a smaller set of observations. There is no single ‘best’ solution. The approach adopted here (i.e., setting both a high threshold for a measure to be considered valid and ‘missing ratings’ to 0) is transparent, can be replicated readily and reflects many clinical situations.

Overview of the first edition NOCC Standard Reports

1. Data are reported separately at three levels of analysis: Collection Occasion only; Periods of Care; and Episodes of Care.
2. The current set of reports is based on the highest level of aggregation – the national level. There is no ‘disaggregation’ of the data by partition factors (beyond the basic specification of the national protocol – collection age group, mental health service setting and reason for collection). Nor is their disaggregation by stratification factors.

Understanding the key to NOCC Standard Report table numbering

The Standard Reports are individually identified by a four digit number. The following table provides a key to the NOCC Standard Report numbering scheme:

Table 3: NOCC Standard Report numbering scheme
<p><i>n1 = Collection Age Group</i></p> <p>1 = Child & Adolescent 2 = Adult 3 = Older Person</p> <p><i>n2 = Level of analysis</i></p> <p>1 = Collection Occasion 2 = Period of Care 3 = Episode of Care</p> <p><i>n3 = Major content domain</i></p> <p>Note – these are specific to Collection Age Group</p> <p><i>n4 = Sub major content domain or Partition by Setting</i></p> <p>Setting₁ = Psychiatric Inpatient Setting₂ = Community Residential Setting₃ = Ambulatory</p>

Thus, it is relatively simple to identify Tables between Collection Age Groups and the Level of Analysis; similarly, it is relatively simple to cross-reference Tables within a set of Standard Reports for a single Collection Age Group.

Readers interested in comparing profiles between the three Collection Occasion Age Groups should note that the first eight Tables in Collection Occasion Level of Analysis set and the ten Tables comprising each of the Period of Care and Episode of Care Level of Analysis are comparable in terms of structure – only the specific Versions of the HoNOS family of measures and the Consumer Self-Report measures varies.

Standard Reports for Collection Occasions

Common Tables across the Collection Age Groups

Tables n.1.1 present summaries of the nature and volume of the NOCC Data available for analysis in the first edition Standard Reports. For each of the NOCC measures, completion rates are reported as percentages in the Tables. These percentages are calculated as the proportion of the number of ‘completed measures’ to the total number of Collection Occasions.

The NOCC Protocol specifies when measures are required for a particular Collection Occasion. When measures are not required, for example, Principal Diagnosis and Mental Health Legal Status at ‘Admission’, completion rates are reported as ‘Not Required’ even although some valid data may have been submitted.

The Child & Adolescent Group differs from Adults and Older Persons in that the SDQ-Parent and SDQ-Youth measures are specific to the age of the consumer at the time of collection. Specifically, there is no self-report version for consumers aged 4-10 years. Completion rates for ‘Parent’ SDQ measures were separately calculated for consumers aged 4-10 years inclusive AND 11-17 years inclusive; for the ‘Youth’ Self-Report SDQ measures, completion rates were only calculated for consumers aged 11-17 years inclusive.

Where a jurisdiction has not submitted Consumer Self-Report data, those Collection Occasions are excluded from the calculation of data completion statistics.

Tables n.1.2 present high level total score summaries of the core *clinician-completed* clinical ratings. As described in the *NOCC Clinician and Self-Report Measures Overview (Version 1.50)*, for the HONOSCA, the total score comprises the first 13 items only; for the HoNOS and the HoNOS65+, the total score is based on all 12 items.

Tables n.1.3 present high level total score summaries of the core *consumer-completed* clinical ratings. As described in the *NOCC Clinician and Self-Report Measures Overview (Version 1.50)*, the Strengths and Difficulties Questionnaire total score (*Total Difficulties*) is derived from the sum of the four subscales (i.e., Emotional Symptoms; Conduct Problems; Hyperactivity/Inattention; Peer Relationship Problems). Note that for Adults and for Older Persons, there is no common Consumer Self-Report measure across the eight Jurisdictions.

Tables n.1.4.n present key statistics for the HoNOS family measures.

Tables n.1.4.1 present percentile statistics for the Total Scores. A percentile is the proportion of scores in a distribution that a specific score is greater than or equal to. For example, in Table 2.1.4.1, the 50th Percentile (also known as the median) on the HoNOS Total for Adults in Psychiatric Inpatient settings is 11. Hence 50% of Adults in this setting scored greater than or equal to this total score; 50% of Adults in this setting scored lower than or equal to this total score. In this table, the 95th Percentile is 25. Hence, 95% of adults in this setting scored lower than or equal to this score; 5% of adults scored greater than or equal to this score.

Tables n.1.4.2 present statistics for the standard summary scores. For Adults and for Older Persons, statistics are also presented for the HoNOS-10 summary score. This measure comprises the sum of the first 10 scales of the HoNOS / HoNO65+. It was originally developed in the Mental Health Classification and Service Costs (MH-CASC) Project. Further details regarding its development can be found at page 217 of the *MH-CASC Volume 1: Main Report* (Buckingham et al, 1998).

Tables n.1.5.1, n.1.5.2, n.1.5.3 & n.1.5.4 present detailed item level analyses of the HoNOS family of measures. The first table (n.1.5.1) shows the number of valid observations (i.e., clinical ratings) for each of the items. Note that this differs across the items comprising the measure – however, only those overall ratings that met the initial criteria for ‘completion’ are included. The second table (n.1.5.2) shows the percentage of clinically significant ratings (i.e., clinical ratings of 2 or higher); the final two tables (n.1.5.3 & n.1.5.4) present item means and standard deviations respectively.

Specific Tables for Child & Adolescent Collection Age Group

Table 1.1.1.6 presents the percentage of positively identified items for each of the seven items that comprise the Factor Influencing Health Status.

Tables 1.1.7.1, 1.1.7.2 & 1.1.7.3 present key summary score statistics for the SDQ. The first table reports Parent Ratings for consumers aged 4-10 years; the second table Parent Ratings for consumers aged 11-17 years; the third table, Youth Self-Report Ratings by consumers aged 11-17 years.

Specific Tables for Adult & Older Persons Collection Age Group

Tables n.1.2.6 present statistics for the standard LSP-16 summary scores. For Adults and for Older Persons, statistics are also presented for the LSP-13 summary score. This measure comprises the sum of the LSP-16 excluding those three items that comprise the LSP Compliance Subscale. It was originally developed in the Mental Health Classification and Service Costs (MH-CASC) Project. Further details regarding its development can be found at page 218 of the *MH-CASC Volume 1: Main Report* (Buckingham et al, 1998).

Tables n.1.2.7 present key summary score statistics for the BASIS-32.

Table 2.1.2.8 presents key summary score statistics for the MHI-38.

Standard Reports for Periods of Care & Episodes of Care

The 10 Tables comprising each of the Periods of Care and the Episodes of Care Standard Reports are identical in structure – corresponding tables differ only in terms of the level of analysis.

Tables n.n.1 present summaries of the nature and volume of the Periods / Episodes of Care NOCC Data available for analysis in the first edition Standard Reports. As discussed above, not all of the Collection Occasion data reported could be assembled to form Valid Sequences; by definition, those data are excluded from any analyses of Periods of Care or Episodes of Care.

Tables n.n.2.1, n.n.2.2 & n.n.2.3 present the distribution of elapsed days from Period of Care, or Episode of Care, 'Start' Dates and 'End' Dates for the three mental health service settings (Psychiatric Inpatient, Community Residential and Ambulatory respectively). For Psychiatric Inpatient and Community Residential Mental Health Services, elapsed days can be considered a proxy measure of service utilisation (i.e., length of stay).

Distribution statistics include the mean, the standard deviation, percentiles and the Coefficient of Variation (CV). The latter statistic is calculated by dividing the standard deviation by the mean. The CV indicates how much variability there is around the group average. While CVs are 'unit-free' (i.e., no minimum or maximum value - since it is a 'ratio'), as a 'rule of thumb', CVs greater than 1 can be assumed to indicate there is 'considerable' variability about the mean. Or another way of putting it, the observations that make up the group mean are widely spread apart. CVs less than 1 (and closer to 0) can be assumed to indicate there is 'little' variability about the mean. Or another way of putting it, the observations that make up the group mean are not widely spread apart - they're more 'closely' bunched up together.

In presenting CVs for the Change Scores, CVs greater than 1 suggest that, regardless of the size or the direction of the change, on average there is a lot of

variability in outcomes. CVs less than 1 suggest that, on average, there is not a lot of variability in outcomes.

Tables n.n.3.1, n.n.3.2 & n.n.3.3 present summaries of the completion rates of the HoNOS and Consumer Self-Report measures. For each of these, completion rates are reported as percentages in the Tables. These percentages are calculated as the proportion of the number of 'completed measures' to the total number of Periods (or Episodes) of Care for the three service settings (Psychiatric Inpatient, Community Residential and Ambulatory respectively).

Tables n.n.4.1, n.n.4.2 & n.n.4.3 present summary change score and effect size statistics for the HoNOS family of measures. A change score is defined as the mean difference between the 'Start' and the 'End' scores. Given that the clinical rating on the HoNOS family indicates the level of clinical severity, a *positive* change score indicates a reduction in clinical severity (i.e., 'improvement'); a *negative* change score indicates an increase in clinical severity (i.e., 'deterioration').

Change scores for the three mental health service settings (Psychiatric Inpatient, Community Residential and Ambulatory respectively) have been calculated only where a Period of Care, or an Episode of Care, has both a 'Start' and an 'End' clinical rating (a 'matched pair').

In addition to means and standard deviations, the Coefficient of Variation for the Change Score is presented also. The most important aspect of the CV statistic is its magnitude. If the group mean is 'negative', then the CV statistic will also be negative in sign. The CV reported in these tables is the absolute value of the statistic (i.e., the sign of the CV is not reported) since the size of the CV conveys the critical information (i.e., how much variability there was about the group mean).

The correlation coefficient between start scores and end scores is also reported. The correlation coefficient is a number between -1 and +1 which measures the degree to which pairs of variables (measures) are related. This provides an indication of the extent to which 'start' scores and 'end' scores are related. A positive coefficient indicates a 'positive' association (as scores increase on one variable, they also increase on the other variable); a negative coefficient indicates a 'negative' association (as scores increase on one variable, they decrease on the other variable). In this context, the magnitude of the correlation coefficient provides an indication of the extent to which consumers' mental health status at 'start' of care predicts mental health status at 'end' of care. As a guide, correlation coefficients of less than ± 0.3 generally indicate 'weak' associations; ± 0.5 'moderate' associations; and ± 0.7 'strong' associations. The lower the association, the greater the role other factors influence mental health status at 'end' of care. These factors may include treatment intensity, individual consumer 'risk factors' as well as provider factors.

Understanding effect sizes

Ultimately, the overall objective of the National Mental Health Strategy is to improve the clinical outcomes for individual consumers who use mental health services. Measuring change in the mental health status of consumers is one way to assess the effectiveness of mental health services.

While the measurement of change is a simple and attractive idea, there are substantial conceptual and technical challenges and debates about how best to go about this task. Some of this complexity is reflected in the national protocol whereby changes can be assessed from both the clinicians' and the consumers' perspectives.

In the scientific community, there are ongoing debates regarding the relative merits of 'statistical' versus 'clinical' change. 'Statistically significant' change can occur where there is a large number of observations but only a small difference in the overall change score; 'Clinical' change can occur where there is a large difference in an overall change score but that difference may not be statistically significant.

Currently, there is no single, optimal solution to these dilemmas. It is beyond the scope of the current document to comprehensively review the range of methodological options – these may be considered in subsequent editions. In this first edition of Standard Reports, AMHOCN has determined that an effect size statistic is the preferred index of change.

The effect size statistic quantifies the size of the difference in change scores where change scores indicate the difference in measurement over time (i.e., from 'start' to 'end' of either a Period of Care or an Episode of Care). In this edition of Standard Reports, following Morris (2000), effect size statistics have been calculated from a repeated measures design perspective – that is, the same person measured at two points in time, namely with Clinical Ratings at both Start and End of a Period of Care or Episode of Care.

What does the size of the effect size mean?

Cohen (1987) classified effect size (ES) values into three different categories of "small", "medium", and "large". In the case of comparing two means, Cohen defined an effect size of 0.20 as 'small', indicating negligible clinical importance; an effect size of 0.50 as 'medium', indicating moderate clinical importance; and an effect size of 0.80 as 'large' indicating critical clinical importance.

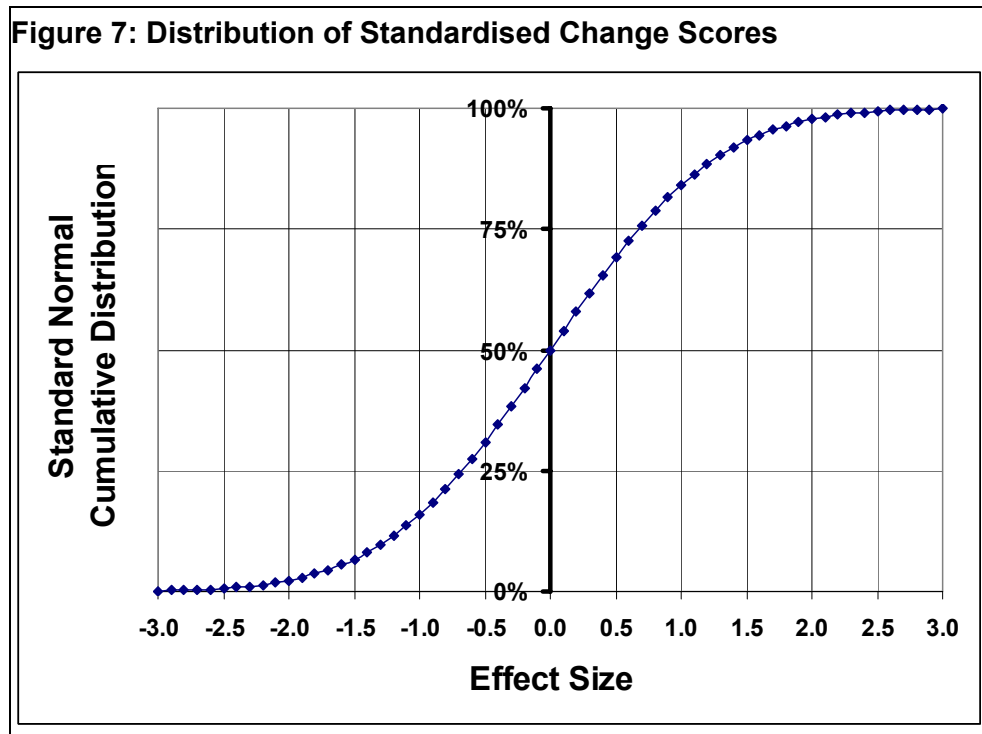
If certain statistical assumptions about the distribution of change scores are met, then an effect size can be related to the standard normal distribution (Morris & DeShon, 2002). This greatly facilitates interpretation of the 'size of the effect'.

A change score of 0 implies that the change would be positive for 50% of the population and would be negative for 50% of the population. That is, zero change

overall. A change score of 0.2 implies that the change would be positive for approximately 58% of the population. Cohen describes this as 'small'. A change score of 0.5 implies that the change would be positive for approximately 69% of the population. Cohen describes this as 'moderate'. A change score of 0.8 implies that the change would be positive for approximately 79% of the population. Cohen describes this as 'large'.

Effect sizes tell us the **size** of the effect and not the **statistical significance** of the effect. If the 95% confidence interval of the effect size includes zero (i.e., the lower estimate is a negative value **AND** the upper estimate is a positive value), then the result is not statistically significant. That is, the observed mean change effect size is not significantly different from zero (i.e., no change).

The following chart plots the relationship between the effect sizes and the normal distribution. It can be seen that 'negative' change occupies the left-half of the chart; 'positive' change the right-half of the chart.



The following table offers a quick reference table of effect sizes to the cumulative normal distribution:

Table 4: Reference table of effect size scores to standard normal cumulative distribution	
Unbiased Effect Size Estimator	Standard Normal Cumulative Distribution
-1.00	15.9%
-0.90	18.4%
-0.80	21.2%
-0.70	24.2%
-0.60	27.4%
-0.50	30.9%
-0.40	34.5%
-0.30	38.2%
-0.20	42.1%
-0.10	46.0%
0.00	50.0%
0.10	54.0%
0.20	57.9%
0.30	61.8%
0.40	65.5%
0.50	69.1%
0.60	72.6%
0.70	75.8%
0.80	78.8%
0.90	81.6%
1.00	84.1%

References

- Buckingham W, Burgess P, Solomon S, Pirkis J & Eagar K. (1998). *Developing a Casemix Classification for Mental Health Services. Volume 1: Main Report*. Commonwealth Department of Health and Family Services: Canberra.
- Coe, R. (2000). What is an 'Effect Size'? A brief introduction¹.
- Cohen, J. (1987). *Statistical Power Analysis for Behavioural Sciences*. Hillsdale, NJ: Erlbaum.
- Department of Health and Ageing (2003a). *Mental Health National Outcomes and Casemix Collection: Technical specification of State and Territory reporting requirements for the outcomes and casemix components of 'Agreed Data, Edition 1.50*. Canberra, Australia².
- Department of Health and Ageing (2003b). *Mental Health National Outcomes and Casemix Collection: Overview of clinician-rated and consumer self-report measures, Edition 1.50*, Canberra, Australia².
- Hojat M & Xu GA. (2004). A Visitor's Guide to Effect Sizes. Statistical Significance Versus Practical (Clinical) Importance of Research Findings. *Advances in Health Sciences Education*, 9, 241–249.
- Morris SB. (2000). Distribution of the standardized mean change effect size for meta-analysis on repeated measures. *British Journal of Mathematical and Statistical Psychology*, 53, 17–29.
- Morris SB & DeShon RP (2002). Combining Effect Size Estimates in Meta-Analysis with Repeated Measures and Independent-Groups Designs. *Psychological Methods*, 7, 105-125.

¹ <http://www.cemcentre.org/ebeuk/research/effectsize/ESbrief.htm>.

² http://www.mhnocc.org/resources/national_outcomes_and_casemix_collection/

Attachments

Attachment 1: Data to be collected at each Collection Occasion within each Mental Health Service Setting, for consumers in each Age Group

<i>Mental Health Service Setting</i>	INPATIENT			COMMUNITY RESIDENTIAL			AMBULATORY			
	<i>Collection Occasion</i>	A	R	D	A	R	D	A	R	D
Children and Adolescents										
HoNOSCA ⁽¹⁾	●	●	●	●	●	●	●	●	●	●
CGAS	●	●	✕	●	●	✕	●	●	✕	●
FIHS	✕	●	●	✕	●	●	✕	●	●	●
Parent / Consumer Self-Report (SDQ) ^(2, 3)	●	●	●	●	●	●	●	●	●	●
Principal and Additional Diagnoses	✕	●	●	✕	●	●	✕	●	●	●
Mental Health Legal Status	✕	●	●	✕	●	●	✕	●	●	●
Adults										
HoNOS ⁽¹⁾	●	●	●	●	●	●	●	●	●	●
LSP-16 ⁽⁴⁾	✕	✕	✕	●	●	●	✕	●	●	●
Consumer self-report (MHI, BASIS32, K10+) ^(3, 5)	✕	✕	✕	●	●	●	●	●	●	●
Principal and Additional Diagnoses	✕	●	●	✕	●	●	✕	●	●	●
Focus of Care ⁽⁶⁾	✕	✕	✕	✕	✕	✕	✕	●	●	●
Mental Health Legal Status	✕	●	●	✕	●	●	✕	●	●	●
Older persons										
HoNOS 65+ ⁽¹⁾	●	●	●	●	●	●	●	●	●	●
LSP-16 ⁽¹⁾	✕	✕	✕	●	●	●	✕	●	●	●
RUG-ADL	●	●	✕	●	●	✕	✕	✕	✕	✕
Consumer self-report (MHI, BASIS32, K10+) ^(3, 5)	✕	✕	✕	●	●	●	●	●	●	●
Principal and Additional Diagnoses	✕	●	●	✕	●	●	✕	●	●	●
Focus of Care ⁽⁶⁾	✕	✕	✕	✕	✕	✕	✕	●	●	●
Mental Health Legal Status	✕	●	●	✕	●	●	✕	●	●	●

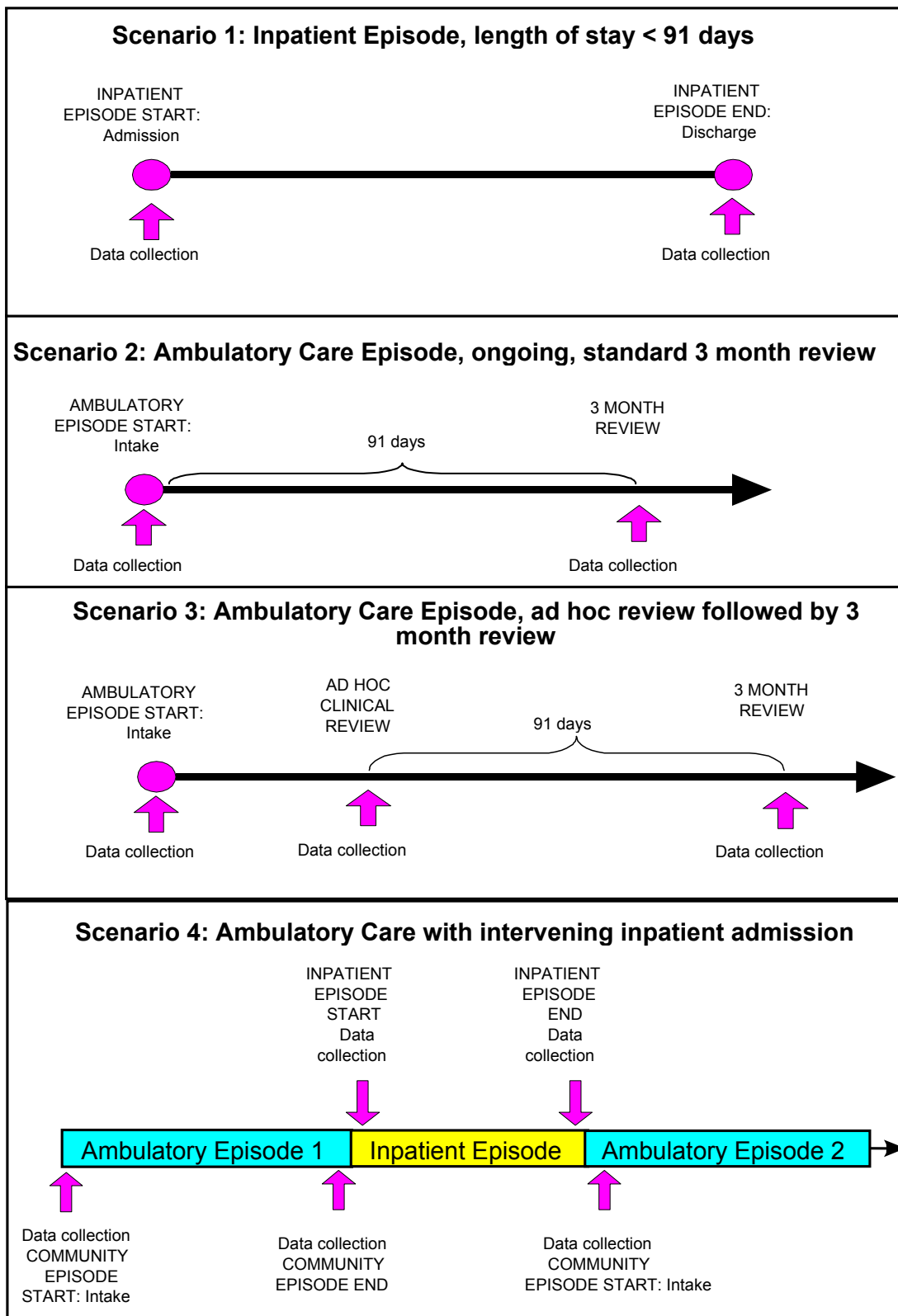
Abbreviations and Symbols

- | | | | |
|----------|-----------------------------------|---|--|
| A | Admission to Mental Health Care | ● | Collection of data on this occasion is mandatory |
| R | Review of Mental Health Care | ✕ | No collection requirements apply |
| D | Discharge from Mental Health Care | | |

Notes

- (1) Discharge ratings for the HoNOS, HoNOS65+ and HoNOSCA are not required for inpatient episodes less than 3 days duration.
- (2) Discharge ratings for the SDQ are not required for any episode of less than 21 days duration because the rating period used at discharge (previous month) would overlap significantly with the period rated at admission.
- (3) The classification of consumer self-report measures as mandatory is intended only to indicate the expectation that consumer's will be invited to complete self-report measures at the specified *Collection Occasions*, not that such measures will always be appropriate. Special considerations applying to the collection of self-report measures are described in section 7.5.
- (4) The LSP-16 is not included as a measure for use in inpatient settings as, in its current form, it requires ratings to be based on the consumer's functioning over the previous three months. This is difficult for the majority of inpatient episodes which are relatively brief.
- (5) Introduction of adult consumer self-report measures in inpatient episodes is not included as a national requirement at this stage but will be reviewed in the future following experience in use of the measures in other settings. Individual Jurisdictions or service agencies may however choose to trial these measures in inpatient settings.
- (6) Restriction of the Focus of Care only to ambulatory care episodes for adults and older persons is based on experience in the MH-CASC study which found it be of limited value in inpatient and community residential settings and with child/adolescent patients.

Attachment 2: Data collection requirements under four episode scenarios



Section 2: Standard Reports

Collection Occasion Standard Reports

Table 1.1.1: Summary of the Nature and Volume of NOCC Collection Occasion Data by Mental Health Service Setting for each Reason for Collection for all data reported to April 2005 for Children and Adolescents with all Mental Health Summary Diagnostic Groups for all Demographic Groups within Age Group for all Jurisdictions

	CO	CO-C	CO-Y	HoNOSCA	CGAS	FIHS	SDQ-P-C	SDQ-P-Y	SDQ-Y	PDX	MHLS	Sex	Age
	N	N	N	%	%	%	%	%	%	%	%	%	%
Psychiatric Inpatient	4942	217	2658	77	87	60	47	4	39	71	73	100	99
Admission	2740	112	1542	80	88	NR	72	5	55	NR	NR	100	99
New referral	1914	71	1245	81	86	NR	70	4	55	NR	NR	100	99
From other setting	733	41	297	83	94	NR	76	10	54	NR	NR	100	99
Other	93	0	0	58	67	NR	-	-	-	NR	NR	100	100
Review	265	2	132	89	86	70	50	1	40	80	75	100	100
91-day review	134	2	100	96	96	90	50	1	41	90	90	100	99
Other	131	0	32	81	76	50	-	-	38	69	61	99	100
Discharge	1937	103	984	71	NR	59	20	2	14	70	73	100	99
No further care	462	26	297	74	NR	77	4	0	11	85	89	100	99
Change of setting	1378	77	687	73	NR	56	26	3	16	64	66	100	99
Death	0	0	0	-	NR	-	-	-	-	-	-	-	-
Other	97	0	0	14	NR	14	-	-	-	80	85	100	97
Community Residential	188	0	4	76	94	53	-	-	-	58	47	97	99
Admission	97	0	2	87	95	NR	-	-	-	NR	NR	96	99
New referral	82	0	2	89	98	NR	-	-	-	NR	NR	95	99
From other setting	11	0	0	64	82	NR	-	-	-	NR	NR	100	100
Other	4	0	0	100	75	NR	-	-	-	NR	NR	100	100
Review	39	0	1	92	92	79	-	-	-	72	38	97	100
91-day review	30	0	0	100	100	93	-	-	-	73	30	97	100
Other	9	0	1	67	67	33	-	-	-	67	67	100	100
Discharge	52	0	1	42	NR	33	-	-	-	48	54	100	100
No further care	33	0	0	45	NR	42	-	-	-	45	42	100	100
Change of setting	8	0	1	88	NR	38	-	-	-	88	63	100	100
Death	0	0	0	-	NR	-	-	-	-	-	-	-	-
Other	11	0	0	-	NR	-	-	-	-	27	82	100	100
Ambulatory	49496	6387	16289	77	92	61	59	23	40	69	76	100	99
Admission	22752	2926	7150	90	90	NR	83	34	57	NR	NR	100	99
New referral	20110	2559	6047	92	91	NR	86	37	61	NR	NR	100	99
From other setting	1975	367	1103	74	78	NR	56	18	38	NR	NR	100	100
Other	667	0	0	74	91	NR	-	-	-	NR	NR	100	100
Review	10568	1579	3899	86	95	80	60	24	43	78	80	100	100
91-day review	7925	1281	3104	87	97	86	58	24	45	82	86	100	100
Other	2643	298	795	81	87	61	65	24	39	67	61	100	99
Discharge	16176	1882	5240	54	NR	49	22	8	13	64	73	100	99
No further care	10168	1687	4403	59	NR	64	17	7	11	71	74	100	100
Change of setting	2229	194	834	71	NR	33	61	14	27	41	53	100	97
Death	9	1	3	44	NR	56	-	-	-	67	78	100	100
Other	3770	0	0	30	NR	19	-	-	-	58	84	100	100

Explanatory Notes:

NR	Not Required	CO-Y	Collection Occasions, Consumers Aged 11-17	SDQ-Y	SDQ Youth Version, Consumers Aged 11-17
-	No Valid Observations	SDQ-P-C	SDQ Parent Version, Consumers Aged 4-10	PDX	Principal Diagnosis
CO	Overall Collection Occasions	SDQ-P-Y	SDQ Parent Version, Consumers Aged 11-17	MHLS	Mental Health Legal Status
CO-C	Collection Occasions, Consumers Aged 4-10				

Table 1.1.2: Core Clinical Summary Score Profiles by Mental Health Service Setting for each Reason for Collection for all data reported to April 2005 for Children and Adolescents with all Mental Health Summary Diagnostic Groups for all Demographic Groups within Age Group for all Jurisdictions

	CO	HoNOSCA-13			CGAS			FIHS Total		
		N	V%	M	SD	V%	M	SD	V%	M
Psychiatric Inpatient	4942	77	16.2	7.6	87	48.4	14.0	60	3.7	1.9
Admission	2740	80	17.9	7.1	88	48.8	13.6	NR	-	-
New referral	1914	81	17.9	7.1	86	49.2	13.8	NR	-	-
From other setting	733	83	18.3	7.0	94	47.6	13.2	NR	-	-
Other	93	58	15.4	7.4	67	52.7	14.2	NR	-	-
Review	265	89	17.5	7.7	86	44.6	16.2	70	4.0	2.0
91-day review	134	96	17.8	7.6	96	40.6	16.5	90	4.2	1.9
Other	131	81	17.2	7.9	76	50.4	14.0	50	3.8	2.1
Discharge	1937	71	13.3	7.4	NR	-	-	59	3.6	1.9
No further care	462	74	11.9	6.8	NR	-	-	77	3.4	1.9
Change of setting	1378	73	13.9	7.5	NR	-	-	56	3.7	1.9
Death	0	-	-	-	NR	-	-	-	-	-
Other	97	14	8.9	4.4	NR	-	-	14	4.0	2.4
Community Residential	188	76	12.6	6.7	94	58.8	14.1	53	2.9	2.0
Admission	97	87	14.0	6.4	95	58.5	15.0	NR	-	-
New referral	82	89	13.6	6.2	98	56.7	12.1	NR	-	-
From other setting	11	64	18.3	7.3	82	58.2	18.4	NR	-	-
Other	4	100	14.8	7.5	75	98.3	1.2	NR	-	-
Review	39	92	11.8	5.8	92	59.5	12.1	79	3.0	1.9
91-day review	30	100	11.5	5.7	100	60.8	12.3	93	3.0	2.0
Other	9	67	13.3	6.6	67	51.8	8.0	33	2.7	1.5
Discharge	52	42	8.4	7.1	NR	-	-	33	2.7	2.1
No further care	33	45	6.9	7.0	NR	-	-	42	2.5	2.2
Change of setting	8	88	11.6	6.6	NR	-	-	38	3.7	1.5
Death	0	-	-	-	NR	-	-	-	-	-
Other	11	-	-	-	NR	-	-	-	-	-
Ambulatory	49496	77	11.9	6.7	92	58.2	12.5	61	2.6	1.9
Admission	22752	90	13.2	6.3	90	57.3	12.3	NR	-	-
New referral	20110	92	13.0	6.2	91	57.7	12.1	NR	-	-
From other setting	1975	74	15.1	6.9	78	54.2	13.2	NR	-	-
Other	667	74	12.9	6.8	91	55.6	14.7	NR	-	-
Review	10568	86	12.0	6.5	95	60.0	12.9	80	2.7	1.9
91-day review	7925	87	11.6	6.4	97	60.7	12.6	86	2.6	1.9
Other	2643	81	13.0	6.9	87	57.4	13.5	61	3.0	1.8
Discharge	16176	54	8.7	6.7	NR	-	-	49	2.5	1.9
No further care	10168	59	7.8	6.1	NR	-	-	64	2.4	2.0
Change of setting	2229	71	12.8	7.7	NR	-	-	33	3.0	1.8
Death	9	44	12.0	7.6	NR	-	-	56	3.2	2.2
Other	3770	30	7.8	6.5	NR	-	-	19	2.3	1.8

Explanatory Notes:

NR	Not Required	V%	Percentage of Valid Observations	HoNOSCA-13	HoNOSCA 13 item total
-	No Valid Observations	M	Mean		
CO	Overall Collection Occasions	SD	Standard Deviation		

Table 1.1.3: Core Consumer Summary Score Profiles by Mental Health Service Setting for each Reason for Collection for all data reported to April 2005 for Children and Adolescents with all Mental Health Summary Diagnostic Groups for all Demographic Groups within Age Group for all Jurisdictions

	CO	CO-C	CO-Y	SDQ-P-C			SDQ-P-Y			SDQ-Y		
	N	N	N	V%	M	SD	V%	M	SD	V%	M	SD
Psychiatric Inpatient	4942	217	2658	47.5	23.2	6.5	3.9	19.1	7.5	39.0	18.1	6.6
Admission	2740	112	1542	72.3	23.7	6.7	5.3	19.5	7.6	54.6	18.5	6.5
New referral	1914	71	1245	70.4	23.7	7.4	4.0	18.8	7.5	54.7	18.4	6.4
From other setting	733	41	297	75.6	23.7	5.8	10.4	22.1	7.6	54.2	19.0	6.6
Other	93	0	0	-	-	-	-	-	-	-	-	-
Review	265	2	132	50.0	17.0	.	0.8	19.5	6.1	40.2	17.2	7.9
91-day review	134	2	100	50.0	17.0	.	1.0	19.3	6.4	41.0	18.4	7.9
Other	131	0	32	20.6	4.9	37.5	13.4	6.9
Discharge	1937	103	984	20.4	21.1	5.3	2.1	16.7	6.9	14.4	15.8	6.5
No further care	462	26	297	3.8	19.0	.	0.3	13.3	6.9	11.1	13.7	6.0
Change of setting	1378	77	687	26.0	21.2	5.5	2.9	18.2	6.5	15.9	16.6	6.6
Death	0	-	-	-	-	-	-	-	-	-	-	-
Other	97	0	0	-	-	-	-	-	-	-	-	-
Community Residential	188	0	4	-	-	-	-	-	-	-	-	-
Admission	97	0	2	-	-	-	-	-	-	-	-	-
New referral	82	0	2	-	-	-	-	-	-	-	-	-
From other setting	11	0	0	-	-	-	-	-	-	-	-	-
Other	4	0	0	-	-	-	-	-	-	-	-	-
Review	39	0	1	-	-	-	-	-	-	-	-	-
91-day review	30	0	0	-	-	-	-	-	-	-	-	-
Other	9	0	1	-	-	-	-	-	-	-	-	-
Discharge	52	0	1	-	-	-	-	-	-	-	-	-
No further care	33	0	0	-	-	-	-	-	-	-	-	-
Change of setting	8	0	1	-	-	-	-	-	-	-	-	-
Death	0	-	-	-	-	-	-	-	-	-	-	-
Other	11	0	0	-	-	-	-	-	-	-	-	-
Ambulatory	49496	6387	16289	59.0	20.1	6.7	23.2	19.1	7.0	39.7	17.3	6.4
Admission	22752	2926	7150	82.5	20.8	6.5	33.8	19.6	6.7	57.1	18.0	6.1
New referral	20110	2559	6047	86.4	20.9	6.6	36.5	19.6	6.8	60.6	17.8	6.1
From other setting	1975	367	1103	55.6	20.0	4.7	18.5	19.3	6.2	38.0	19.5	5.2
Other	667	0	0	-	-	-	-	-	-	-	-	-
Review	10568	1579	3899	59.7	20.1	6.6	24.2	19.3	7.1	43.5	16.9	6.6
91-day review	7925	1281	3104	58.5	20.2	6.6	24.1	19.2	7.2	44.7	16.8	6.6
Other	2643	298	795	65.1	19.6	6.7	24.4	19.7	6.9	38.9	17.7	6.5
Discharge	16176	1882	5240	22.0	16.1	6.8	7.9	16.2	7.1	13.3	14.2	6.7
No further care	10168	1687	4403	17.5	15.5	6.7	6.7	14.8	6.7	10.8	13.0	6.5
Change of setting	2229	194	834	61.3	18.2	6.5	14.3	19.9	6.8	26.6	17.7	6.0
Death	9	1	3	-	-	-	-	-	-	-	-	-
Other	3770	0	0	-	-	-	-	-	-	-	-	-

Explanatory Notes:

NR	Not Required	CO-Y	Collection Occasions, Consumers Aged 11-17	SDQ-P-C	SDQ Parent Version, Consumers Aged 4-10
-	No Valid Observations	V%	Percentage of Valid Observations	SDQ-P-Y	SDQ Parent Version, Consumers Aged 11-17
CO	Overall Collection Occasions	M	Mean	SDQ-Y	SDQ Youth Version, Consumers Aged 11-17
CO-C	Collection Occasions, Consumers Aged 4-10	SD	Standard Deviation		

Table 1.1.4.1: Distribution of HoNOSCA Total Scores by Mental Health Service Setting for each Reason for Collection for all data reported to April 2005 for Children and Adolescents with all Mental Health Summary Diagnostic Groups for all Demographic Groups within Age Group for all Jurisdictions

	N	HoNOSCA-13						
		P5	P10	P25	P50	P75	P90	P95
Psychiatric Inpatient	3805	5	7	11	16	21	27	29
Admission	2204	7	9	13	18	23	27	30
New referral	1543	7	9	13	17	23	27	31
From other setting	607	7	9	13	18	24	28	30
Other	54	4	5	10	15	21	25	27
Review	235	5	8	11	17	23	28	31
91-day review	129	6	8	12	18	23	28	31
Other	106	4	7	11	17	23	29	31
Discharge	1366	3	5	8	12	18	24	27
No further care	340	3	4	7	11	16	21	25
Change of setting	1012	3	5	8	13	18	24	28
Death	0	-	-	-	-	-	-	-
Other	14	-	1	7	9	12	16	-
Community Residential	142	1	4	8	12	17	23	24
Admission	84	4	6	9	13	19	24	26
New referral	73	5	6	9	12	17	23	26
From other setting	7	4	4	14	21	24	-	-
Other	4	5	5	7	16	21	-	-
Review	36	4	5	7	12	15	20	24
91-day review	30	3	4	7	12	15	20	23
Other	6	6	6	8	13	19	-	-
Discharge	22	-	-	1	9	15	19	20
No further care	15	-	-	1	3	13	18	-
Change of setting	7	-	-	7	12	16	-	-
Death	0	-	-	-	-	-	-	-
Other	0	-	-	-	-	-	-	-
Ambulatory	38202	2	4	7	11	16	21	24
Admission	20420	4	6	9	13	17	22	25
New referral	18472	4	5	8	12	17	21	24
From other setting	1455	5	7	10	14	19	25	28
Other	493	3	4	8	12	17	22	25
Review	9073	3	4	7	11	16	21	24
91-day review	6923	3	4	7	11	16	20	23
Other	2150	3	5	8	12	18	22	25
Discharge	8709	-	2	4	7	12	18	22
No further care	5981	-	1	3	6	11	16	20
Change of setting	1585	2	3	7	12	18	23	27
Death	4	4	4	5	11	20	-	-
Other	1139	-	1	3	6	11	17	20

Explanatory Notes:

N Number of Valid Observations - No Valid Observations Pnn nnth percentiles

Table 1.1.4.2: HoNOSCA Summary Score Profiles by Mental Health Service Setting for each Reason for Collection for all data reported to April 2005 for Children and Adolescents with all Mental Health Summary Diagnostic Groups for all Demographic Groups within Age Group for all Jurisdictions

	CO	Behavioural Problems		Impairment		Symptomatic Problems		Social Problems		Information Problems	
		N	M	SD	M	SD	M	SD	M	SD	M
Psychiatric Inpatient	3805	4.7	3.3	1.6	1.7	3.8	2.1	6.2	3.4	1.9	2.1
Admission	2204	5.6	3.3	1.7	1.7	4.0	2.1	6.6	3.4	2.0	2.2
New referral	1543	5.7	3.3	1.6	1.7	4.1	2.0	6.5	3.3	2.0	2.2
From other setting	607	5.5	3.2	1.8	1.7	4.0	2.2	7.1	3.5	2.1	2.1
Other	54	3.4	3.4	1.4	1.8	4.1	1.8	6.4	3.2	2.4	2.5
Review	235	4.0	3.1	2.2	1.8	4.4	2.4	6.9	3.2	1.5	2.0
91-day review	129	3.6	2.5	2.5	2.0	4.6	2.5	7.0	3.2	1.5	1.8
Other	106	4.4	3.6	1.8	1.6	4.2	2.3	6.8	3.3	1.5	2.2
Discharge	1366	3.6	3.1	1.4	1.6	3.2	2.0	5.3	3.2	1.7	2.0
No further care	340	3.3	3.0	1.1	1.5	2.9	1.9	4.7	3.1	1.3	1.8
Change of setting	1012	3.7	3.1	1.4	1.6	3.3	2.0	5.5	3.3	1.8	2.1
Death	0	-	-	-	-	-	-	-	-	-	-
Other	14	2.0	1.7	1.4	1.3	2.2	2.3	3.3	2.4	1.0	2.0
Community Residential	142	3.5	2.6	1.2	1.3	2.7	1.9	5.2	3.3	1.9	2.1
Admission	84	4.0	2.7	1.3	1.4	3.1	1.8	5.6	3.3	2.3	2.3
New referral	73	4.1	2.8	1.1	1.3	3.1	1.8	5.3	3.2	2.3	2.2
From other setting	7	4.4	1.9	1.9	1.9	3.7	1.6	8.3	3.1	2.9	3.6
Other	4	2.5	3.0	3.0	2.4	3.0	0.8	6.3	3.8	0.5	1.0
Review	36	3.2	2.1	1.0	1.1	2.7	2.1	4.9	2.9	1.5	1.7
91-day review	30	3.1	1.9	1.0	1.1	2.7	2.1	4.7	3.0	1.4	1.5
Other	6	3.8	2.7	1.3	1.4	2.7	2.2	5.5	2.3	1.8	2.7
Discharge	22	2.2	2.5	0.9	1.3	1.3	1.7	4.0	4.0	1.2	1.4
No further care	15	2.0	2.3	1.0	1.4	1.2	1.9	2.7	3.2	0.9	1.1
Change of setting	7	2.7	3.0	0.6	1.1	1.4	1.3	6.9	4.1	1.9	1.8
Death	0	-	-	-	-	-	-	-	-	-	-
Other	0	-	-	-	-	-	-	-	-	-	-
Ambulatory	38202	3.2	2.6	1.3	1.6	2.8	1.9	4.5	3.0	1.3	1.8
Admission	20420	3.7	2.6	1.4	1.6	3.2	1.9	4.9	2.9	1.6	1.9
New referral	18472	3.7	2.6	1.4	1.6	3.2	1.9	4.8	2.9	1.6	1.9
From other setting	1455	4.2	2.9	1.6	1.7	3.5	2.0	5.8	3.2	1.6	2.0
Other	493	3.5	2.7	1.5	1.6	3.0	2.0	4.9	3.0	1.8	2.0
Review	9073	3.1	2.4	1.4	1.6	2.8	1.9	4.6	3.0	1.1	1.6
91-day review	6923	3.1	2.4	1.4	1.5	2.7	1.8	4.4	2.9	1.0	1.6
Other	2150	3.3	2.6	1.5	1.6	3.0	2.0	5.2	3.3	1.3	1.8
Discharge	8709	2.3	2.4	1.0	1.4	2.0	1.7	3.4	3.0	0.8	1.5
No further care	5981	2.1	2.2	0.9	1.3	1.7	1.5	3.1	2.7	0.8	1.5
Change of setting	1585	3.4	2.9	1.3	1.6	3.0	2.1	5.1	3.4	1.2	1.8
Death	4	1.3	1.3	3.8	1.3	2.3	2.1	4.8	4.9	2.0	1.4
Other	1139	2.2	2.4	0.9	1.4	1.8	1.6	3.0	2.8	0.5	1.2

Explanatory Notes:

CO	Overall Collection Occasions	N	Number of Valid Observations	-	No Valid Observations
M	Mean	SD	Standard Deviation		

Table 1.1.5.1: HoNOSCA Item Rating Profiles (Number of Valid Observations) by Mental Health Service Setting for each Reason for Collection for all data reported to April 2005 for Children and Adolescents with all Mental Health Summary Diagnostic Groups for all Demographic Groups within Age Group for all Jurisdictions

	H01	H02	H03	H04	H05	H06	H07	H08	H09	H10	H11	H12	H13	H14	H15
	N	N	N	N	N	N	N	N	N	N	N	N	N	N	N
Psychiatric Inpatient	3798	3785	3796	3750	3667	3800	3785	3776	3792	3751	3794	3773	3446	3439	3449
Admission	2198	2186	2197	2162	2104	2201	2192	2182	2200	2164	2196	2181	1988	1953	1959
New referral	1540	1533	1540	1517	1477	1541	1539	1534	1541	1512	1537	1526	1393	1332	1335
From other setting	604	599	603	594	573	606	600	598	605	598	605	601	544	568	572
Other	54	54	54	51	54	54	53	50	54	54	54	54	51	53	52
Review	235	235	235	232	227	235	231	233	229	235	235	233	226	216	216
91-day review	129	129	129	127	123	129	125	129	123	129	129	127	124	124	123
Other	106	106	106	105	104	106	106	104	106	106	106	106	102	92	93
Discharge	1365	1364	1364	1356	1336	1364	1362	1361	1363	1352	1363	1359	1232	1270	1274
No further care	340	339	340	337	336	340	340	340	339	336	340	339	306	322	322
Change of setting	1011	1011	1010	1005	986	1010	1008	1007	1010	1002	1010	1006	914	934	938
Death	-	-	-	-	-	-	-	-	-	-	-	-	-	-	-
Other	14	14	14	14	14	14	14	14	14	14	13	14	12	14	14
Community Residential	141	141	141	141	137	142	140	141	141	142	140	141	141	138	138
Admission	83	84	83	83	84	84	82	83	83	84	82	84	83	82	82
New referral	72	73	72	72	73	73	71	73	73	73	71	73	72	72	72
From other setting	7	7	7	7	7	7	7	7	7	7	7	7	7	7	7
Other	4	4	4	4	4	4	4	3	3	4	4	4	4	3	3
Review	36	35	36	36	32	36	36	36	36	36	36	35	36	34	34
91-day review	30	29	30	30	27	30	30	30	30	30	30	29	30	29	29
Other	6	6	6	6	5	6	6	6	6	6	6	6	6	5	5
Discharge	22	22	22	22	21	22	22	22	22	22	22	22	22	22	22
No further care	15	15	15	15	14	15	15	15	15	15	15	15	15	15	15
Change of setting	7	7	7	7	7	7	7	7	7	7	7	7	7	7	7
Death	-	-	-	-	-	-	-	-	-	-	-	-	-	-	-
Other	-	-	-	-	-	-	-	-	-	-	-	-	-	-	-
Ambulatory	38153	38044	38089	37775	37293	38083	38054	37929	38093	37980	38016	38065	37176	35651	35586
Admission	20394	20321	20346	20170	19842	20351	20322	20240	20346	20274	20300	20337	19971	19081	19052
New referral	18451	18384	18409	18241	17944	18413	18379	18310	18403	18339	18372	18395	18106	17277	17255
From other setting	1453	1446	1446	1441	1419	1447	1450	1441	1450	1442	1442	1451	1396	1337	1335
Other	490	491	491	488	479	491	493	489	493	493	486	491	469	467	462
Review	9061	9039	9051	8970	8872	9053	9050	9015	9057	9036	9037	9044	8762	8622	8622
91-day review	6913	6898	6907	6852	6779	6916	6907	6888	6909	6895	6899	6907	6693	6705	6714
Other	2148	2141	2144	2118	2093	2137	2143	2127	2148	2141	2138	2137	2069	1917	1908
Discharge	8698	8684	8692	8635	8579	8679	8682	8674	8690	8670	8679	8684	8443	7948	7912
No further care	5975	5964	5970	5928	5892	5969	5968	5969	5970	5954	5962	5962	5799	5367	5340
Change of setting	1582	1579	1581	1572	1555	1575	1576	1568	1581	1577	1579	1582	1525	1450	1444
Death	4	4	4	4	4	4	4	4	4	4	4	4	3	4	3
Other	1137	1137	1137	1131	1128	1131	1134	1133	1135	1135	1134	1136	1116	1127	1125
Explanatory notes															
N	Number of Valid Observations														
-	No Valid Observations														
H01 - Disruptive, antisocial, or aggressive behaviour	H02 - Problems with overactivity, attention or concentration			H03 - Non-accidental self-injury			H04 - Alcohol, substance or solvent misuse			H05 - Problems with scholastic or language skills					
H06 - Physical illness or disability problems	H07 - Problems associated with hallucinations, delusions, etc			H08 - Problems with non-organic somatic symptoms			H09 - Problems with emotional and related symptoms			H10 - Problems with peer relationships					
H11 - Problems with self-care and independence	H12 - Problems with family life and relationships			H13 - Poor school attendance			H14 - Problems with lack of knowledge or understanding ...			H15 - Problems with lack of information ...					

Table 1.1.5.2: HoNOSCA Item Rating Profiles (Percentage Clinically Significant¹) by Mental Health Service Setting for each Reason for Collection for all data reported to April 2005 for Children and Adolescents with all Mental Health Summary Diagnostic Groups for all Demographic Groups within Age Group for all Jurisdictions

	CO	H01	H02	H03	H04	H05	H06	H07	H08	H09	H10	H11	H12	H13	H14	H15
	N	%	%	%	%	%	%	%	%	%	%	%	%	%	%	%
Psychiatric Inpatient	3805	46	43	42	20	36	15	27	15	81	57	24	79	38	39	23
Admission	2204	52	47	52	26	38	16	30	16	86	62	26	81	44	41	26
New referral	1543	50	47	57	28	35	16	30	16	87	60	27	82	41	39	27
From other setting	607	59	51	43	22	45	15	29	14	85	66	27	81	50	45	23
Other	54	33	20	31	13	35	9	28	19	87	59	22	72	41	50	30
Review	235	38	51	27	12	48	22	41	19	79	70	35	82	34	38	11
91-day review	129	33	53	27	6	57	26	46	22	75	74	46	79	27	42	6
Other	106	44	48	27	20	38	16	36	16	83	65	23	85	42	33	18
Discharge	1366	38	35	28	13	32	12	19	13	73	48	19	76	31	37	21
No further care	340	33	28	30	14	21	13	18	11	69	36	19	73	27	30	14
Change of setting	1012	40	38	26	13	36	11	20	14	75	52	19	77	32	39	23
Death	0	-	-	-	-	-	-	-	-	-	-	-	-	-	-	-
Other	14	7	7	43	-	14	29	-	14	64	57	-	50	7	21	7
Community Residential	142	42	44	19	11	32	5	15	14	63	51	17	70	34	32	20
Admission	84	49	49	23	12	36	7	14	19	75	60	17	75	37	43	29
New referral	73	51	49	25	12	33	5	15	18	74	60	12	71	34	44	29
From other setting	7	43	43	14	-	57	-	-	43	86	57	43	100	71	43	43
Other	4	25	50	-	25	50	50	25	-	75	50	50	100	25	25	-
Review	36	36	44	14	6	31	3	19	11	56	44	14	72	28	14	11
91-day review	30	33	40	13	7	30	3	20	10	57	47	10	67	27	13	10
Other	6	50	67	17	-	33	-	17	17	50	33	33	100	33	17	17
Discharge	22	23	27	14	14	23	-	9	-	27	27	23	50	32	23	5
No further care	15	27	33	-	13	27	-	13	-	20	27	20	33	13	7	-
Change of setting	7	14	14	43	14	14	-	-	-	43	29	29	86	71	57	14
Death	0	-	-	-	-	-	-	-	-	-	-	-	-	-	-	-
Other	0	-	-	-	-	-	-	-	-	-	-	-	-	-	-	-
Ambulatory	38202	43	40	14	8	33	10	7	19	68	47	14	64	20	27	14
Admission	20420	50	45	19	9	35	11	8	23	77	52	15	70	23	33	19
New referral	18472	51	45	18	9	35	10	8	23	77	52	14	70	23	33	19
From other setting	1455	51	47	29	12	40	13	15	22	83	59	20	78	33	35	20
Other	493	44	39	15	8	32	15	10	19	68	47	18	67	23	35	22
Review	9073	42	43	10	7	37	10	8	17	69	49	15	66	19	24	10
91-day review	6923	41	44	9	6	37	9	8	17	69	48	15	65	17	23	9
Other	2150	46	41	14	7	39	12	9	19	72	53	18	70	26	28	13
Discharge	8709	28	25	8	8	24	7	4	9	45	31	10	48	14	16	8
No further care	5981	24	23	5	7	22	6	2	8	40	28	8	43	12	15	8
Change of setting	1585	42	37	19	12	33	11	12	17	68	50	19	69	26	25	13
Death	4	25	-	-	-	50	75	-	-	50	50	50	75	-	75	-
Other	1139	26	24	7	6	22	6	3	7	42	24	7	43	12	11	4

Explanatory notes

CO - Collection Occasions	N - Number of Valid Observations	- No Valid Observations	¹ - Clinical Ratings of 2 or higher			
H01 - Disruptive, antisocial, or aggressive behaviour	H02 - Problems with overactivity, attention or concentration	H03 - Non-accidental self-injury	H04 - Alcohol, substance or solvent misuse	H05 - Problems with scholastic or language skills		
H06 - Physical illness or disability problems	H07 - Problems associated with hallucinations, delusions, etc	H08 - Problems with non-organic somatic symptoms	H09 - Problems with emotional and related symptoms	H10 - Problems with peer relationships		
H11 - Problems with self-care and independence	H12 - Problems with family life and relationships	H13 - Poor school attendance	H14 - Problems with lack of knowledge or understanding ...	H15 - Problems with lack of information ...		

Table 1.1.5.3: HoNOSCA Item Rating Profiles (Means) by Mental Health Service Setting for each Reason for Collection for all data reported to April 2005 for Children and Adolescents with all Mental Health Summary Diagnostic Groups for all Demographic Groups within Age Group for all Jurisdictions

	H01	H02	H03	H04	H05	H06	H07	H08	H09	H10	H11	H12	H13	H14	H15
	M	M	M	M	M	M	M	M	M	M	M	M	M	M	M
Psychiatric Inpatient	1.5	1.3	1.3	0.7	1.2	0.5	0.8	0.5	2.4	1.7	0.8	2.4	1.4	1.3	0.8
Admission	1.7	1.5	1.6	0.9	1.2	0.5	0.9	0.5	2.6	1.9	0.9	2.5	1.6	1.4	0.9
New referral	1.6	1.4	1.7	0.9	1.1	0.6	0.9	0.5	2.6	1.8	0.9	2.5	1.5	1.3	0.9
From other setting	1.9	1.6	1.3	0.7	1.4	0.4	0.9	0.5	2.6	2.0	0.9	2.6	1.9	1.5	0.7
Other	1.1	0.7	1.1	0.6	1.1	0.3	0.9	0.7	2.6	1.8	0.8	2.4	1.5	1.5	1.0
Review	1.3	1.6	0.8	0.4	1.6	0.6	1.4	0.6	2.5	2.1	1.2	2.5	1.2	1.3	0.4
91-day review	1.1	1.6	0.7	0.2	1.8	0.8	1.5	0.7	2.6	2.2	1.4	2.5	1.0	1.4	0.2
Other	1.4	1.5	0.9	0.6	1.3	0.5	1.1	0.6	2.5	1.9	0.9	2.5	1.5	1.1	0.6
Discharge	1.2	1.1	0.8	0.4	1.0	0.4	0.6	0.4	2.1	1.4	0.6	2.2	1.1	1.1	0.7
No further care	1.1	0.9	0.9	0.5	0.7	0.4	0.5	0.3	2.0	1.1	0.6	2.1	0.9	1.0	0.5
Change of setting	1.3	1.2	0.8	0.4	1.1	0.4	0.6	0.5	2.2	1.5	0.6	2.3	1.2	1.2	0.7
Death	-	-	-	-	-	-	-	-	-	-	-	-	-	-	-
Other	0.5	0.3	1.1	0.1	0.6	0.8	-	0.5	1.7	1.4	0.1	1.6	0.3	0.6	0.4
Community Residential	1.3	1.3	0.5	0.4	1.0	0.2	0.4	0.4	1.9	1.4	0.6	2.0	1.2	1.1	0.8
Admission	1.5	1.5	0.6	0.4	1.1	0.2	0.4	0.6	2.2	1.7	0.5	2.2	1.3	1.3	1.0
New referral	1.6	1.5	0.7	0.4	1.0	0.2	0.4	0.5	2.2	1.7	0.4	2.1	1.2	1.3	1.0
From other setting	1.7	1.9	0.6	0.3	1.4	0.4	-	1.1	2.6	1.7	1.3	2.7	2.6	1.4	1.4
Other	0.5	1.3	0.3	0.5	2.0	1.0	1.0	-	2.7	1.5	1.5	2.8	0.5	0.7	-
Review	1.3	1.4	0.4	0.2	1.0	0.1	0.6	0.3	1.7	1.3	0.6	2.0	1.0	0.8	0.7
91-day review	1.2	1.3	0.4	0.2	0.9	0.1	0.6	0.3	1.7	1.3	0.4	2.0	1.1	0.8	0.7
Other	1.7	1.5	0.3	0.3	1.4	0.2	0.7	0.5	1.5	1.0	1.3	2.3	0.8	1.2	1.0
Discharge	0.7	0.7	0.4	0.5	0.9	0.0	0.3	0.2	0.8	0.7	0.7	1.5	1.0	0.8	0.4
No further care	0.7	0.8	-	0.5	1.0	0.1	0.5	0.1	0.6	0.7	0.6	1.0	0.4	0.5	0.3
Change of setting	0.6	0.6	1.1	0.4	0.6	-	-	0.3	1.1	0.9	1.0	2.6	2.4	1.4	0.4
Death	-	-	-	-	-	-	-	-	-	-	-	-	-	-	-
Other	-	-	-	-	-	-	-	-	-	-	-	-	-	-	-
Ambulatory	1.3	1.2	0.4	0.3	1.0	0.3	0.2	0.6	2.0	1.4	0.5	1.9	0.7	0.9	0.5
Admission	1.5	1.3	0.6	0.3	1.1	0.3	0.3	0.7	2.3	1.6	0.5	2.1	0.8	1.1	0.6
New referral	1.5	1.3	0.6	0.3	1.1	0.3	0.2	0.7	2.2	1.5	0.5	2.0	0.8	1.1	0.6
From other setting	1.5	1.4	0.9	0.4	1.2	0.4	0.4	0.7	2.4	1.8	0.7	2.3	1.2	1.1	0.7
Other	1.4	1.2	0.5	0.3	1.1	0.5	0.3	0.7	2.0	1.5	0.7	2.0	0.8	1.2	0.8
Review	1.3	1.3	0.3	0.2	1.1	0.3	0.2	0.6	2.0	1.5	0.6	1.9	0.7	0.8	0.4
91-day review	1.3	1.3	0.3	0.2	1.1	0.3	0.2	0.5	2.0	1.5	0.5	1.9	0.6	0.7	0.3
Other	1.4	1.2	0.5	0.3	1.2	0.4	0.3	0.6	2.1	1.6	0.6	2.1	0.9	1.0	0.5
Discharge	0.9	0.9	0.3	0.3	0.8	0.2	0.1	0.4	1.5	1.0	0.4	1.5	0.5	0.6	0.3
No further care	0.9	0.8	0.2	0.2	0.7	0.2	0.1	0.3	1.3	1.0	0.3	1.4	0.4	0.6	0.3
Change of setting	1.3	1.1	0.6	0.4	1.0	0.3	0.4	0.5	2.1	1.5	0.7	2.0	0.9	0.8	0.5
Death	0.8	0.5	-	-	1.3	2.5	0.3	0.3	1.8	1.5	1.3	2.0	-	2.0	-
Other	0.9	0.8	0.2	0.2	0.7	0.2	0.1	0.3	1.4	0.9	0.3	1.4	0.4	0.3	0.2

Explanatory notes

M Mean - No Valid Observations

H01 - Disruptive, antisocial, or aggressive behaviour	H02 - Problems with overactivity, attention or concentration	H03 - Non-accidental self-injury	H04 - Alcohol, substance or solvent misuse	H05 - Problems with scholastic or language skills
H06 - Physical illness or disability problems	H07 - Problems associated with hallucinations, delusions, etc	H08 - Problems with non-organic somatic symptoms	H09 - Problems with emotional and related symptoms	H10 - Problems with peer relationships
H11 - Problems with self-care and independence	H12 - Problems with family life and relationships	H13 - Poor school attendance	H14 - Problems with lack of knowledge or understanding ...	H15 - Problems with lack of information ...

Table 1.1.5.4: HoNOSCA Item Rating Profiles (Standard Deviations) by Mental Health Service Setting for each Reason for Collection for all data reported to April 2005 for Children and Adolescents with all Mental Health Summary Diagnostic Groups for all Demographic Groups within Age Group for all Jurisdictions

	H01	H02	H03	H04	H05	H06	H07	H08	H09	H10	H11	H12	H13	H14	H15
	SD	SD	SD	SD	SD	SD	SD	SD	SD	SD	SD	SD	SD	SD	SD
Psychiatric Inpatient	1.4	1.2	1.4	1.2	1.3	1.0	1.3	0.9	1.1	1.3	1.1	1.2	1.5	1.3	1.1
Admission	1.4	1.3	1.5	1.3	1.3	1.0	1.4	1.0	1.0	1.3	1.1	1.2	1.6	1.3	1.1
New referral	1.4	1.3	1.5	1.3	1.3	1.1	1.4	1.0	1.0	1.3	1.1	1.1	1.6	1.3	1.2
From other setting	1.4	1.3	1.5	1.3	1.4	0.9	1.3	1.0	1.1	1.3	1.1	1.2	1.7	1.4	1.1
Other	1.3	1.1	1.4	1.0	1.3	0.8	1.3	1.1	1.0	1.3	1.0	1.3	1.5	1.4	1.2
Review	1.2	1.3	1.2	1.0	1.3	1.1	1.6	1.0	1.1	1.3	1.3	1.2	1.4	1.5	0.9
91-day review	1.1	1.3	1.1	0.6	1.3	1.2	1.6	1.1	1.1	1.3	1.4	1.2	1.4	1.5	0.6
Other	1.3	1.3	1.4	1.2	1.2	1.0	1.5	1.0	1.0	1.2	1.1	1.1	1.5	1.4	1.1
Discharge	1.3	1.1	1.2	1.0	1.3	0.9	1.1	0.9	1.1	1.2	1.0	1.2	1.4	1.2	1.0
No further care	1.2	1.1	1.2	1.0	1.1	0.9	1.1	0.8	1.1	1.1	1.0	1.1	1.3	1.1	0.9
Change of setting	1.3	1.1	1.2	1.0	1.3	0.8	1.1	0.9	1.1	1.2	1.0	1.2	1.4	1.2	1.1
Death	-	-	-	-	-	-	-	-	-	-	-	-	-	-	-
Other	0.7	0.6	1.4	0.4	0.9	1.3	-	1.3	1.3	1.3	0.3	1.5	0.6	1.2	0.9
Community Residential	1.2	1.2	1.0	0.8	1.2	0.5	0.9	0.8	1.2	1.2	0.9	1.2	1.6	1.2	1.1
Admission	1.3	1.3	1.0	0.9	1.3	0.6	0.8	0.9	1.2	1.2	0.9	1.2	1.6	1.3	1.2
New referral	1.3	1.3	1.1	1.0	1.2	0.6	0.8	0.9	1.2	1.2	0.8	1.3	1.6	1.2	1.1
From other setting	1.3	1.1	0.8	0.5	1.4	0.5	-	1.2	0.8	1.4	0.8	0.5	1.6	1.8	1.8
Other	1.0	1.5	0.5	1.0	1.8	1.2	1.4	-	0.6	1.7	1.7	0.5	1.0	1.2	-
Review	1.0	0.9	0.8	0.5	1.0	0.4	1.0	0.8	1.1	1.1	0.9	0.9	1.5	0.9	0.8
91-day review	1.0	0.9	0.8	0.5	1.0	0.4	1.0	0.7	1.1	1.1	0.8	0.9	1.6	0.8	0.8
Other	1.2	1.2	0.8	0.5	1.1	0.4	0.8	1.2	1.4	1.3	1.0	0.5	1.3	1.6	1.2
Discharge	1.0	0.9	1.0	1.0	1.3	0.2	0.8	0.4	1.0	1.1	0.9	1.4	1.5	1.1	0.6
No further care	1.0	0.9	-	1.1	1.4	0.3	0.9	0.4	1.0	1.2	0.8	1.2	0.7	0.8	0.5
Change of setting	1.1	0.8	1.6	0.8	1.1	-	-	0.5	0.9	0.9	1.2	1.3	1.7	1.4	0.8
Death	-	-	-	-	-	-	-	-	-	-	-	-	-	-	-
Other	-	-	-	-	-	-	-	-	-	-	-	-	-	-	-
Ambulatory	1.2	1.2	0.9	0.8	1.2	0.8	0.7	1.0	1.2	1.2	0.9	1.2	1.3	1.1	0.9
Admission	1.3	1.2	1.0	0.8	1.2	0.8	0.7	1.1	1.1	1.2	0.9	1.2	1.3	1.2	1.0
New referral	1.3	1.2	1.0	0.8	1.2	0.8	0.7	1.1	1.1	1.2	0.9	1.2	1.3	1.2	1.0
From other setting	1.3	1.2	1.3	1.0	1.3	0.9	0.9	1.1	1.1	1.3	1.0	1.2	1.5	1.2	1.0
Other	1.2	1.2	1.0	0.8	1.2	1.0	0.8	1.0	1.1	1.2	1.0	1.2	1.3	1.2	1.1
Review	1.2	1.2	0.8	0.7	1.3	0.8	0.7	0.9	1.1	1.2	0.9	1.2	1.2	1.1	0.8
91-day review	1.2	1.1	0.7	0.7	1.3	0.8	0.7	0.9	1.1	1.2	0.9	1.1	1.2	1.1	0.7
Other	1.2	1.2	1.0	0.7	1.3	0.9	0.7	1.0	1.1	1.3	1.0	1.2	1.4	1.2	0.9
Discharge	1.1	1.0	0.7	0.8	1.1	0.7	0.5	0.7	1.1	1.1	0.8	1.2	1.1	1.0	0.7
No further care	1.0	1.0	0.6	0.7	1.1	0.6	0.4	0.7	1.0	1.0	0.7	1.1	1.0	1.0	0.7
Change of setting	1.2	1.1	1.1	0.9	1.3	0.8	0.9	1.0	1.2	1.2	1.0	1.2	1.4	1.1	0.9
Death	1.0	0.6	-	-	1.0	1.9	0.5	0.5	1.7	1.9	1.5	1.6	-	1.4	-
Other	1.1	1.0	0.7	0.7	1.1	0.7	0.5	0.6	1.1	1.1	0.7	1.2	1.0	0.8	0.5

Explanatory notes

SD Standard Deviation - No Valid Observations

H01 - Disruptive, antisocial, or aggressive behaviour

H02 - Problems with overactivity, attention or concentration

H03 - Non-accidental self-injury

H04 - Alcohol, substance or solvent misuse

H05 - Problems with scholastic or language skills

H06 - Physical illness or disability problems

H07 - Problems associated with hallucinations, delusions, etc

H08 - Problems with non-organic somatic symptoms

H09 - Problems with emotional and related symptoms

H10 - Problems with peer relationships

H11 - Problems with self-care and independence

H12 - Problems with family life and relationships

H13 - Poor school attendance

H14 - Problems with lack of knowledge or understanding ...

H15 - Problems with lack of information ...

Table 1.1.6: FIHS Item Rating Profiles (% Positively Identified) by Mental Health Service Setting for each Reason for Collection for all data reported to April 2005 for Children and Adolescents with all Mental Health Summary Diagnostic Groups for all Demographic Groups within Age Group for all Jurisdictions

	CO	F01	F02	F03	F04	F05	F06	F07
	%	%	%	%	%	%	%	%
Psychiatric Inpatient	1320	40	70	69	83	62	38	18
Admission	NR	-	-	-	-	-	-	-
New referral	NR	-	-	-	-	-	-	-
From other setting	NR	-	-	-	-	-	-	-
Other	NR	-	-	-	-	-	-	-
Review	186	48	72	76	84	76	37	17
91-day review	120	49	76	76	85	82	38	14
Other	66	45	64	77	82	67	35	21
Discharge	1134	38	70	68	83	59	38	18
No further care	355	32	67	65	81	55	34	12
Change of setting	765	41	71	69	84	61	40	20
Death	0	-	-	-	-	-	-	-
Other	14	50	71	57	79	79	57	21
Community Residential	48	40	54	52	67	44	15	17
Admission	NR	-	-	-	-	-	-	-
New referral	NR	-	-	-	-	-	-	-
From other setting	NR	-	-	-	-	-	-	-
Other	NR	-	-	-	-	-	-	-
Review	31	39	55	55	71	42	10	19
91-day review	28	43	57	54	68	39	11	21
Other	3	-	33	67	100	67	-	-
Discharge	17	41	53	47	59	47	24	12
No further care	14	36	50	50	57	43	14	14
Change of setting	3	67	67	33	67	67	67	-
Death	0	-	-	-	-	-	-	-
Other	0	-	-	-	-	-	-	-
Ambulatory	16395	24	51	50	68	40	16	9
Admission	NR	-	-	-	-	-	-	-
New referral	NR	-	-	-	-	-	-	-
From other setting	NR	-	-	-	-	-	-	-
Other	NR	-	-	-	-	-	-	-
Review	8466	25	53	52	71	42	16	8
91-day review	6844	23	51	50	70	41	14	8
Other	1622	30	61	60	76	46	21	11
Discharge	7929	23	50	47	66	38	17	10
No further care	6463	22	49	45	65	37	16	9
Change of setting	729	33	58	60	76	47	25	12
Death	5	40	60	80	80	60	-	-
Other	732	22	44	50	62	31	12	8

Explanatory notes

CO - Collection Occasions	- No Valid Observations	NR - Not Required	
F01 - Maltreatment syndromes	F02 - Negative life events in childhood	F03 - Upbringing	F04 - Primary support group, incl. family circumstances
F05 - Social environment	F06 - Certain psychosocial circumstances	F07 - Other psychosocial circumstances	

Table 1.1.7.1: SDQ – Parent Version Summary Score Profiles by Mental Health Service Setting for each Reason for Collection for all data reported to April 2005 for Children and Adolescents with all Mental Health Summary Diagnostic Groups for all Demographic Groups within 4 – 10 years for all Jurisdictions

	CO	Emotional Symptoms		Conduct Problems		Hyperactivity / Inattention		Peer Problems		Prosocial Behaviour		Impact		
	N	M	SD	M	SD	M	SD	M	SD	M	SD	N	M	SD
Psychiatric Inpatient	82	5.8	2.5	5.9	2.7	7.3	2.5	4.6	2.2	5.4	2.5	77	6.6	3.1
Admission	68	5.8	2.5	6.0	2.8	7.4	2.5	4.7	2.3	5.3	2.5	63	7.0	3.0
New referral	37	5.7	2.7	6.1	3.0	7.4	2.5	4.8	2.4	5.4	2.5	34	7.3	3.1
From other setting	31	5.8	2.4	6.0	2.6	7.5	2.4	4.5	2.1	5.3	2.6	29	6.7	2.9
Other	0	-	-	-	-	-	-	-	-	-	-	-	-	-
Review	1	3.0	-	5.0	-	2.0	-	7.0	-	8.0	-	1	6.0	-
91-day review	1	3.0	-	5.0	-	2.0	-	7.0	-	8.0	-	1	6.0	-
Other	0	-	-	-	-	-	-	-	-	-	-	-	-	-
Discharge	13	6.0	2.3	5.3	2.3	6.8	2.0	3.7	2.0	5.8	2.2	13	4.9	2.9
No further care	1	6.0	-	4.0	-	8.0	-	1.0	-	8.0	-	1	6.0	-
Change of setting	12	6.0	2.4	5.4	2.4	6.8	2.1	3.9	1.9	5.6	2.2	12	4.8	3.0
Death	0	-	-	-	-	-	-	-	-	-	-	-	-	-
Other	0	-	-	-	-	-	-	-	-	-	-	-	-	-
Community Residential	0	-	-	-	-	-	-	-	-	-	-	-	-	-
Admission	0	-	-	-	-	-	-	-	-	-	-	-	-	-
New referral	0	-	-	-	-	-	-	-	-	-	-	-	-	-
From other setting	0	-	-	-	-	-	-	-	-	-	-	-	-	-
Other	0	-	-	-	-	-	-	-	-	-	-	-	-	-
Review	0	-	-	-	-	-	-	-	-	-	-	-	-	-
91-day review	0	-	-	-	-	-	-	-	-	-	-	-	-	-
Other	0	-	-	-	-	-	-	-	-	-	-	-	-	-
Discharge	0	-	-	-	-	-	-	-	-	-	-	-	-	-
No further care	0	-	-	-	-	-	-	-	-	-	-	-	-	-
Change of setting	0	-	-	-	-	-	-	-	-	-	-	-	-	-
Death	0	-	-	-	-	-	-	-	-	-	-	-	-	-
Other	0	-	-	-	-	-	-	-	-	-	-	-	-	-
Ambulatory	3400	5.1	2.6	4.6	2.5	6.6	2.6	4.0	2.3	6.1	2.3	3253	4.6	3.0
Admission	2154	5.4	2.6	4.8	2.5	6.7	2.6	4.1	2.3	6.1	2.3	2073	5.0	3.0
New referral	1950	5.4	2.7	4.8	2.5	6.8	2.6	4.0	2.3	6.2	2.3	1874	5.3	2.9
From other setting	204	5.1	2.1	4.7	1.9	5.9	2.1	4.4	1.8	5.2	1.9	199	1.8	1.8
Other	0	-	-	-	-	-	-	-	-	-	-	-	-	-
Review	889	4.9	2.5	4.6	2.5	6.6	2.6	4.1	2.3	6.0	2.2	857	4.5	3.0
91-day review	729	4.9	2.5	4.7	2.4	6.6	2.6	4.1	2.3	6.0	2.2	707	4.6	3.0
Other	160	5.0	2.4	4.2	2.6	6.6	2.6	3.9	2.2	6.1	2.1	150	4.2	2.9
Discharge	357	3.9	2.4	3.5	2.2	5.5	2.5	3.2	2.1	6.8	2.2	323	2.3	2.5
No further care	295	3.8	2.3	3.3	2.1	5.3	2.5	3.1	2.1	6.8	2.2	262	2.1	2.4
Change of setting	62	4.1	2.9	4.1	2.2	6.6	2.3	3.8	2.0	6.8	2.0	61	3.4	2.5
Death	0	-	-	-	-	-	-	-	-	-	-	-	-	-
Other	0	-	-	-	-	-	-	-	-	-	-	-	-	-

Explanatory Notes:

CO	Overall Collection Occasions	N	Number of Valid Observations	-	No Valid Observations
M	Mean	SD	Standard Deviation		

Table 1.1.7.2: SDQ – Parent Version Summary Score Profiles by Mental Health Service Setting for each Reason for Collection for all data reported to April 2005 for Children and Adolescents with all Mental Health Summary Diagnostic Groups for all Demographic Groups within 11 – 17 years for all Jurisdictions

	CO	Emotional Symptoms		Conduct Problems		Hyperactivity / Inattention		Peer Problems		Prosocial Behaviour		Impact		
	N	M	SD	M	SD	M	SD	M	SD	M	SD	N	M	SD
Psychiatric Inpatient	715	6.3	2.5	3.8	2.7	5.5	2.7	3.6	2.3	6.6	2.5	661	5.7	3.3
Admission	585	6.3	2.5	3.9	2.7	5.6	2.7	3.6	2.4	6.6	2.4	537	5.9	3.1
New referral	453	6.3	2.5	3.6	2.6	5.4	2.7	3.5	2.4	6.8	2.4	414	5.7	3.2
From other setting	132	6.6	2.5	4.8	2.9	6.4	2.7	4.2	2.4	6.1	2.6	123	6.8	2.8
Other	0	-	-	-	-	-	-	-	-	-	-	-	-	-
Review	39	6.4	2.3	3.3	2.5	5.7	2.6	4.3	2.0	5.9	2.8	37	6.6	3.0
91-day review	32	6.2	2.4	3.3	2.4	5.6	2.8	4.3	2.0	5.8	2.8	30	6.6	2.9
Other	7	7.4	2.1	2.9	3.1	6.3	1.4	4.0	2.2	6.4	3.4	7	6.3	3.8
Discharge	91	5.7	2.0	3.1	2.5	4.7	2.7	3.3	2.1	6.6	2.4	87	4.1	3.6
No further care	29	4.5	2.0	2.4	2.3	4.1	2.5	2.3	2.0	7.5	2.1	26	2.6	3.2
Change of setting	62	6.3	1.8	3.4	2.6	5.0	2.7	3.8	2.0	6.2	2.4	61	4.7	3.7
Death	0	-	-	-	-	-	-	-	-	-	-	-	-	-
Other	0	-	-	-	-	-	-	-	-	-	-	-	-	-
Community Residential	0	-	-	-	-	-	-	-	-	-	-	-	-	-
Admission	0	-	-	-	-	-	-	-	-	-	-	-	-	-
New referral	0	-	-	-	-	-	-	-	-	-	-	-	-	-
From other setting	0	-	-	-	-	-	-	-	-	-	-	-	-	-
Other	0	-	-	-	-	-	-	-	-	-	-	-	-	-
Review	0	-	-	-	-	-	-	-	-	-	-	-	-	-
91-day review	0	-	-	-	-	-	-	-	-	-	-	-	-	-
Other	0	-	-	-	-	-	-	-	-	-	-	-	-	-
Discharge	0	-	-	-	-	-	-	-	-	-	-	-	-	-
No further care	0	-	-	-	-	-	-	-	-	-	-	-	-	-
Change of setting	0	-	-	-	-	-	-	-	-	-	-	-	-	-
Death	0	-	-	-	-	-	-	-	-	-	-	-	-	-
Other	0	-	-	-	-	-	-	-	-	-	-	-	-	-
Ambulatory	6045	5.6	2.6	4.1	2.5	5.8	2.6	3.8	2.3	6.3	2.3	5715	4.9	3.1
Admission	3725	5.9	2.5	4.2	2.6	5.8	2.7	3.8	2.3	6.3	2.3	3536	5.4	2.9
New referral	3515	6.0	2.5	4.2	2.6	5.8	2.7	3.8	2.3	6.4	2.3	3335	5.5	2.9
From other setting	210	5.2	2.4	4.5	2.3	5.7	2.3	4.0	2.1	5.6	2.1	201	3.2	3.0
Other	0	-	-	-	-	-	-	-	-	-	-	-	-	-
Review	1597	5.3	2.6	4.1	2.6	6.0	2.6	3.9	2.3	6.0	2.3	1528	4.6	3.1
91-day review	1322	5.2	2.6	4.1	2.5	6.0	2.6	3.9	2.3	6.1	2.3	1265	4.5	3.1
Other	275	5.5	2.5	4.3	2.7	6.0	2.6	3.9	2.4	6.0	2.4	263	4.7	3.2
Discharge	723	4.5	2.6	3.4	2.4	5.0	2.6	3.3	2.3	6.5	2.3	651	3.0	2.9
No further care	539	4.0	2.3	3.0	2.2	4.8	2.5	3.1	2.2	6.6	2.3	481	2.2	2.5
Change of setting	184	6.0	2.6	4.5	2.5	5.6	2.7	4.0	2.4	6.3	2.2	170	5.2	2.9
Death	0	-	-	-	-	-	-	-	-	-	-	-	-	-
Other	0	-	-	-	-	-	-	-	-	-	-	-	-	-

Explanatory Notes:

CO	Overall Collection Occasions	N	Number of Valid Observations	-	No Valid Observations
M	Mean	SD	Standard Deviation		

Table 1.1.7.3: SDQ – Youth Version Summary Score Profiles by Mental Health Service Setting for each Reason for Collection for all data reported to April 2005 for Children and Adolescents with all Mental Health Summary Diagnostic Groups for all Demographic Groups within 11 – 17 years for all Jurisdictions

	CO	Emotional Symptoms		Conduct Problems		Hyperactivity / Inattention		Peer Problems		Prosocial Behaviour		Impact		
	N	M	SD	M	SD	M	SD	M	SD	M	SD	N	M	SD
Psychiatric Inpatient	969	5.6	2.5	3.5	2.3	5.5	2.4	3.6	2.1	6.9	2.3	836	4.1	3.0
Admission	804	5.7	2.5	3.6	2.4	5.6	2.4	3.6	2.1	6.9	2.3	703	4.2	3.0
New referral	643	5.6	2.4	3.6	2.4	5.6	2.4	3.6	2.0	6.8	2.3	572	4.2	3.0
From other setting	161	5.9	2.7	3.5	2.3	5.8	2.5	3.8	2.1	6.9	2.3	131	4.6	3.1
Other	0	-	-	-	-	-	-	-	-	-	-	-	-	-
Review	52	5.5	2.8	2.6	1.9	5.1	2.4	4.0	2.7	7.6	1.7	40	3.5	3.1
91-day review	40	5.8	2.8	2.8	1.9	5.4	2.3	4.4	2.7	7.3	1.6	32	3.2	3.1
Other	12	4.8	2.7	1.8	1.6	4.2	2.5	2.7	2.1	8.5	1.8	8	4.8	3.2
Discharge	113	5.0	2.3	3.0	2.2	4.9	2.6	2.9	2.0	7.0	2.3	93	3.0	2.8
No further care	33	4.7	2.2	2.1	2.1	4.6	2.4	2.3	1.9	7.2	2.0	29	2.9	3.0
Change of setting	80	5.1	2.3	3.3	2.2	5.0	2.6	3.2	2.0	6.9	2.3	64	3.1	2.7
Death	0	-	-	-	-	-	-	-	-	-	-	-	-	-
Other	0	-	-	-	-	-	-	-	-	-	-	-	-	-
Community Residential	0	-	-	-	-	-	-	-	-	-	-	-	-	-
Admission	0	-	-	-	-	-	-	-	-	-	-	-	-	-
New referral	0	-	-	-	-	-	-	-	-	-	-	-	-	-
From other setting	0	-	-	-	-	-	-	-	-	-	-	-	-	-
Other	0	-	-	-	-	-	-	-	-	-	-	-	-	-
Review	0	-	-	-	-	-	-	-	-	-	-	-	-	-
91-day review	0	-	-	-	-	-	-	-	-	-	-	-	-	-
Other	0	-	-	-	-	-	-	-	-	-	-	-	-	-
Discharge	0	-	-	-	-	-	-	-	-	-	-	-	-	-
No further care	0	-	-	-	-	-	-	-	-	-	-	-	-	-
Change of setting	0	-	-	-	-	-	-	-	-	-	-	-	-	-
Death	0	-	-	-	-	-	-	-	-	-	-	-	-	-
Other	0	-	-	-	-	-	-	-	-	-	-	-	-	-
Ambulatory	6223	5.0	2.6	3.7	2.1	5.4	2.4	3.3	2.1	6.9	2.1	5340	3.2	2.7
Admission	3970	5.3	2.5	3.9	2.1	5.5	2.3	3.3	2.1	6.8	2.1	3473	3.5	2.7
New referral	3551	5.3	2.6	3.8	2.1	5.6	2.4	3.2	2.1	6.9	2.0	3080	3.7	2.7
From other setting	419	5.3	2.2	4.5	1.9	5.5	1.9	4.3	1.9	5.7	2.1	393	1.9	2.0
Other	0	-	-	-	-	-	-	-	-	-	-	-	-	-
Review	1617	4.6	2.5	3.6	2.1	5.4	2.4	3.3	2.2	7.0	2.1	1382	2.9	2.7
91-day review	1346	4.6	2.5	3.6	2.1	5.3	2.4	3.3	2.1	7.0	2.1	1149	2.8	2.6
Other	271	4.8	2.6	3.8	2.3	5.7	2.5	3.4	2.3	6.8	2.1	233	3.4	2.9
Discharge	636	3.9	2.5	3.1	2.2	4.5	2.4	2.7	2.0	7.3	2.1	485	2.1	2.5
No further care	474	3.5	2.4	2.7	2.1	4.3	2.4	2.5	2.0	7.4	2.1	350	1.6	2.2
Change of setting	162	5.1	2.5	4.0	2.3	5.3	2.3	3.3	2.1	6.9	2.0	135	3.5	2.8
Death	0	-	-	-	-	-	-	-	-	-	-	-	-	-
Other	0	-	-	-	-	-	-	-	-	-	-	-	-	-

Explanatory Notes:

CO	Overall Collection Occasions	N	Number of Valid Observations	-	No Valid Observations
M	Mean	SD	Standard Deviation		

Periods of Care Standard Reports

Table 1.2.1: Summary of the Nature and Volume of NOCC Periods of Care Data by Mental Health Service Setting for all data reported to April 2005 for Children and Adolescents with all Mental Health Summary Diagnostic Groups for all Demographic Groups within Age Group for all Jurisdictions

	Overall Collection Occasions		Valid Sequences		Valid Periods of Care	
	N	%	N	%	N	%
<i>Psychiatric Inpatient</i>	4942	100.0	2914	100.0	1073	100.0
Any Admission > Any Review	54	1.1	54	1.9	54	5.0
Single CO: Admission Only	1611	32.6	1611	55.3	0	-
Any Admission > Any Discharge	926	18.7	926	31.8	926	86.3
Any Review > Any Review	64	1.3	64	2.2	48	4.5
Single CO: Review Only	20	0.4	20	0.7	0	-
Any Review > Any Discharge	45	0.9	45	1.5	45	4.2
Single CO: Discharge Only	194	3.9	194	6.7	0	-
Invalid CO Sequence	2028	41.0	0	-	0	-
<i>Community Residential</i>	188	100.0	107	100.0	10	100.0
Any Admission > Any Review	0	-	0	-	0	-
Single CO: Admission Only	58	30.9	58	54.2	0	-
Any Admission > Any Discharge	6	3.2	6	5.6	6	60.0
Any Review > Any Review	6	3.2	6	5.6	2	20.0
Single CO: Review Only	14	7.4	14	13.1	0	-
Any Review > Any Discharge	2	1.1	2	1.9	2	20.0
Single CO: Discharge Only	21	11.2	21	19.6	0	-
Invalid CO Sequence	81	43.1	0	-	0	-
<i>Ambulatory</i>	49496	100.0	44718	100.0	15338	100.0
Any Admission > Any Review	2973	6.0	2973	6.6	2973	19.4
Single CO: Admission Only	20033	40.5	20033	44.8	0	-
Any Admission > Any Discharge	6456	13.0	6456	14.4	6456	42.1
Any Review > Any Review	5295	10.7	5295	11.8	3110	20.3
Single CO: Review Only	1462	3.0	1462	3.3	0	-
Any Review > Any Discharge	2799	5.7	2799	6.3	2799	18.2
Single CO: Discharge Only	5700	11.5	5700	12.7	0	-
Invalid CO Sequence	4778	9.7	0	-	0	-

Explanatory Notes

N	Number of Valid Observations
Valid Sequences	A set of Collection Occasions that is valid in terms of the ordering of reason for collection and the date of collection
Valid Periods of Care	A valid sequence with 2 consecutive Collection Occasions where changes over time can be measured
x > y	First Collection Occasion > Last Collection Occasion

Table 1.2.2.1: Distribution of Elapsed Days from Period Start to Period End for NOCC Periods of Care by Psychiatric Inpatient Mental Health Service Setting for all data reported to April 2005 for Children and Adolescents with all Mental Health Summary Diagnostic Groups for all Demographic Groups within Age Group for all Jurisdictions

	N	M	SD	CV	P10	P25	P50	P75	P90
Any Admission > Any Review	54	48.3	36.3	0.75	11	29	36	63	115
New referral > 91-day review	7	60.3	37.6	0.62	20	33	37	92	-
New referral > Other review	20	36.7	23.9	0.65	3	30	35	44	58
From other setting > 91-day review	14	31.1	15.1	0.49	13	19	31	37	57
From other setting > Other review	12	84.6	44.2	0.52	25	47	76	118	157
Other > 91-day review	0	-	-	-	-	-	-	-	-
Other > Other review	1	1.0	-	-	1	1	1	1	1
Any Admission > Any Discharge	926	17.8	28.6	1.61	1	3	8	21	44
New referral > No further care	262	14.3	18.7	1.31	1	3	7	17	39
New referral > Change of setting	398	17.2	26.2	1.53	1	3	8	22	40
New referral > Death	0	-	-	-	-	-	-	-	-
New referral > Other	21	6.3	9.2	1.45	-	1	4	7	16
From other setting > No further care	57	18.5	22.6	1.22	1	4	10	25	55
From other setting > Change of setting	161	23.5	34.4	1.46	1	7	14	27	57
From other setting > Death	0	-	-	-	-	-	-	-	-
From other setting > Other	6	12.7	18.8	1.49	-	1	4	27	-
Other > No further care	3	19.7	10.7	0.54	8	8	22	-	-
Other > Change of setting	10	66.7	121.6	1.82	0	3	28	67	371
Other > Death	0	-	-	-	-	-	-	-	-
Other > Other	8	13.5	13.8	1.02	-	5	7	30	-
Any Review > Any Review	48	64.0	20.2	0.32	37	48	66	79	87
91-day review > 91-day review	40	66.6	19.1	0.29	44	57	68	80	86
91-day review > Other	0	-	-	-	-	-	-	-	-
Other > 91-day review	2	54.0	24.0	0.45	37	37	54	-	-
Other > Other	6	50.2	23.6	0.47	35	35	38	71	-
Any Review > Any Discharge	45	39.4	32.0	0.81	5	19	32	52	89
91-day review > No Further Care	5	63.0	62.9	1.00	2	18	38	121	-
91-day review > Change of Setting	19	32.9	25.9	0.79	5	16	30	49	91
91-day review > Death	0	-	-	-	-	-	-	-	-
91-day review > Discharge Other	0	-	-	-	-	-	-	-	-
Other > No Further Care	1	2.0	-	-	2	2	2	2	2
Other > Change of Setting	20	41.5	25.4	0.61	7	25	37	55	87
Other > Death	0	-	-	-	-	-	-	-	-
Other > Discharge Other	0	-	-	-	-	-	-	-	-
Explanatory Notes:									
N	Number of Valid Observations	M	Mean	CV	Coefficient of Variation				
-	No Valid Observations	SD	Standard Deviation	Pnn	nn th percentiles				

Table 1.2.2.2: Distribution of Elapsed Days from Period Start to Period End for NOCC Periods of Care by Community Residential Mental Health Service Setting for all data reported to April 2005 for Children and Adolescents with all Mental Health Summary Diagnostic Groups for all Demographic Groups within Age Group for all Jurisdictions

	N	M	SD	CV	P10	P25	P50	P75	P90
Any Admission > Any Review	0	-	-	-	-	-	-	-	-
New referral > 91-day review	0	-	-	-	-	-	-	-	-
New referral > Other review	0	-	-	-	-	-	-	-	-
From other setting > 91-day review	0	-	-	-	-	-	-	-	-
From other setting > Other review	0	-	-	-	-	-	-	-	-
Other > 91-day review	0	-	-	-	-	-	-	-	-
Other > Other review	0	-	-	-	-	-	-	-	-
Any Admission > Any Discharge	6	65.7	83.3	1.27	5	8	39	115	-
New referral > No further care	2	143.5	113.8	0.79	63	63	144	-	-
New referral > Change of setting	2	41.5	51.6	1.24	5	5	42	-	-
New referral > Death	0	-	-	-	-	-	-	-	-
New referral > Other	2	12.0	4.2	0.35	9	9	12	-	-
From other setting > No further care	0	-	-	-	-	-	-	-	-
From other setting > Change of setting	0	-	-	-	-	-	-	-	-
From other setting > Death	0	-	-	-	-	-	-	-	-
From other setting > Other	0	-	-	-	-	-	-	-	-
Other > No further care	0	-	-	-	-	-	-	-	-
Other > Change of setting	0	-	-	-	-	-	-	-	-
Other > Death	0	-	-	-	-	-	-	-	-
Other > Other	0	-	-	-	-	-	-	-	-
Any Review > Any Review	2	132.0	77.8	0.59	77	77	132	-	-
91-day review > 91-day review	2	132.0	77.8	0.59	77	77	132	-	-
91-day review > Other	0	-	-	-	-	-	-	-	-
Other > 91-day review	0	-	-	-	-	-	-	-	-
Other > Other	0	-	-	-	-	-	-	-	-
Any Review > Any Discharge	2	94.5	55.9	0.59	55	55	95	-	-
91-day review > No Further Care	2	94.5	55.9	0.59	55	55	95	-	-
91-day review > Change of Setting	0	-	-	-	-	-	-	-	-
91-day review > Death	0	-	-	-	-	-	-	-	-
91-day review > Discharge Other	0	-	-	-	-	-	-	-	-
Other > No Further Care	0	-	-	-	-	-	-	-	-
Other > Change of Setting	0	-	-	-	-	-	-	-	-
Other > Death	0	-	-	-	-	-	-	-	-
Other > Discharge Other	0	-	-	-	-	-	-	-	-
Explanatory Notes:									
N	Number of Valid Observations	M	Mean	CV	Coefficient of Variation				
-	No Valid Observations	SD	Standard Deviation	Pnn	nn th percentiles				

Table 1.2.2.3: Distribution of Elapsed Days from Period Start to Period End for NOCC Periods of Care by Ambulatory Mental Health Service Setting for all data reported to April 2005 for Children and Adolescents with all Mental Health Summary Diagnostic Groups for all Demographic Groups within Age Group for all Jurisdictions

	N	M	SD	CV	P10	P25	P50	P75	P90
Any Admission > Any Review	2973	108.8	56.3	0.52	54	85	97	126	175
New referral > 91-day review	2163	111.8	51.3	0.46	72	89	98	126	170
New referral > Other review	466	97.0	75.8	0.78	14	42	84	132	201
From other setting > 91-day review	115	104.9	46.5	0.44	47	84	98	126	176
From other setting > Other review	35	94.4	62.4	0.66	12	53	97	107	184
Other > 91-day review	133	108.5	50.4	0.46	66	91	97	122	175
Other > Other review	61	109.6	63.2	0.58	40	90	92	129	173
Any Admission > Any Discharge	6456	98.6	91.1	0.92	7	37	78	131	208
New referral > No further care	3681	106.4	91.2	0.86	21	48	86	136	213
New referral > Change of setting	922	116.2	115.7	1.00	6	36	81	164	280
New referral > Death	2	103.5	7.8	0.08	98	98	104	-	-
New referral > Other	1282	72.4	73.8	1.02	-	9	56	110	183
From other setting > No further care	370	86.1	53.6	0.62	15	44	83	121	152
From other setting > Change of setting	42	35.5	55.7	1.57	-	-	17	37	114
From other setting > Death	0	-	-	-	-	-	-	-	-
From other setting > Other	11	83.7	99.2	1.18	-	-	55	154	279
Other > No further care	65	55.8	69.8	1.25	-	3	27	92	153
Other > Change of setting	9	28.2	25.2	0.89	-	10	22	45	-
Other > Death	0	-	-	-	-	-	-	-	-
Other > Other	72	88.3	65.1	0.74	25	40	71	115	176
Any Review > Any Review	3110	101.2	51.6	0.51	41	82	93	116	161
91-day review > 91-day review	2235	105.0	47.7	0.45	63	86	95	119	161
91-day review > Other	210	87.6	76.7	0.88	16	36	64	119	193
Other > 91-day review	437	103.4	48.6	0.47	56	90	97	113	149
Other > Other	228	72.3	54.4	0.75	5	26	76	105	133
Any Review > Any Discharge	2799	92.9	80.6	0.87	15	38	78	120	182
91-day review > No Further Care	1829	96.7	77.7	0.80	21	44	83	124	188
91-day review > Change of Setting	145	85.6	78.8	0.92	5	26	70	116	177
91-day review > Death	2	224.5	20.5	0.09	210	210	225	-	-
91-day review > Discharge Other	180	80.0	62.1	0.78	9	36	71	115	153
Other > No Further Care	494	94.7	99.1	1.05	7	28	77	123	201
Other > Change of Setting	69	75.3	58.2	0.77	5	26	65	109	142
Other > Death	0	-	-	-	-	-	-	-	-
Other > Discharge Other	80	51.1	53.8	1.05	-	-	42	88	111
Explanatory Notes:									
N	Number of Valid Observations	M	Mean	CV	Coefficient of Variation				
-	No Valid Observations	SD	Standard Deviation	Pnn	nn th percentiles				

Table 1.2.3.1: Completion Rates of the Core Clinical and Self-Report Measures for NOCC Periods of Care Data by Psychiatric Inpatient Mental Health Service Setting for all data reported to April 2005 for Children and Adolescents with all Mental Health Summary Diagnostic Groups for all Demographic Groups within Age Group for all Jurisdictions

	VP	HoNOSCA			Consumer Self-Report		
		Start	End	Start & End	Start	End	Start & End
		N	%	%	%	%	%
Any Admission > Any Review	54	90.7	92.6	87.0	94.4	92.6	90.7
New referral > 91-day review	7	71.4	100.0	71.4	100.0	100.0	100.0
New referral > Other review	20	95.0	90.0	90.0	95.0	90.0	90.0
From other setting > 91-day review	14	92.9	100.0	92.9	92.9	100.0	92.9
From other setting > Other review	12	100.0	91.7	91.7	100.0	91.7	91.7
Other > 91-day review	0	-	-	-	-	-	-
Other > Other review	1	-	-	-	-	-	-
Any Admission > Any Discharge	926	87.6	73.8	69.2	89.6	74.7	71.7
New referral > No further care	262	93.5	75.2	71.0	95.8	76.0	73.7
New referral > Change of setting	398	85.2	72.9	67.8	87.9	74.6	71.6
New referral > Death	0	-	-	-	-	-	-
New referral > Other	21	47.6	33.3	19.0	47.6	33.3	19.0
From other setting > No further care	57	96.5	75.4	73.7	96.5	75.4	73.7
From other setting > Change of setting	161	90.7	82.6	78.9	91.9	82.6	79.5
From other setting > Death	0	-	-	-	-	-	-
From other setting > Other	6	66.7	16.7	16.7	66.7	16.7	16.7
Other > No further care	3	100.0	100.0	100.0	100.0	100.0	100.0
Other > Change of setting	10	80.0	80.0	70.0	80.0	80.0	70.0
Other > Death	0	-	-	-	-	-	-
Other > Other	8	12.5	12.5	12.5	12.5	12.5	12.5
Any Review > Any Review	48	100.0	100.0	100.0	100.0	100.0	100.0
91-day review > 91-day review	40	100.0	100.0	100.0	100.0	100.0	100.0
91-day review > Other	0	-	-	-	-	-	-
Other > 91-day review	2	100.0	100.0	100.0	100.0	100.0	100.0
Other > Other	6	100.0	100.0	100.0	100.0	100.0	100.0
Any Review > Any Discharge	45	93.3	95.6	93.3	93.3	95.6	93.3
91-day review > No Further Care	5	80.0	80.0	80.0	80.0	80.0	80.0
91-day review > Change of Setting	19	100.0	100.0	100.0	100.0	100.0	100.0
91-day review > Death	0	-	-	-	-	-	-
91-day review > Discharge Other	0	-	-	-	-	-	-
Other > No Further Care	1	-	100.0	-	-	100.0	-
Other > Change of Setting	20	95.0	95.0	95.0	95.0	95.0	95.0
Other > Death	0	-	-	-	-	-	-
Other > Discharge Other	0	-	-	-	-	-	-
Explanatory Notes:							
VP	Valid Periods of Care	Start	Measure completed at Start of Period	End	Measure completed at End of Period		
N	Number of Valid Observations	-	No Valid Observations				

Table 1.2.3.2: Completion Rates of the Core Clinical and Self-Report Measures for NOCC Periods of Care Data by Community Residential Mental Health Service Setting for all data reported to April 2005 for Children and Adolescents with all Mental Health Summary Diagnostic Groups for all Demographic Groups within Age Group for all Jurisdictions

	VP	HoNOSCA			Consumer Self-Report		
		Start	End	Start & End	Start	End	Start & End
		N	%	%	%	%	%
Any Admission > Any Review	0	-	-	-	-	-	-
New referral > 91-day review	0	-	-	-	-	-	-
New referral > Other review	0	-	-	-	-	-	-
From other setting > 91-day review	0	-	-	-	-	-	-
From other setting > Other review	0	-	-	-	-	-	-
Other > 91-day review	0	-	-	-	-	-	-
Other > Other review	0	-	-	-	-	-	-
Any Admission > Any Discharge	6	66.7	33.3	33.3	66.7	33.3	33.3
New referral > No further care	2	100.0	50.0	50.0	100.0	50.0	50.0
New referral > Change of setting	2	50.0	50.0	50.0	50.0	50.0	50.0
New referral > Death	0	-	-	-	-	-	-
New referral > Other	2	50.0	-	-	50.0	-	-
From other setting > No further care	0	-	-	-	-	-	-
From other setting > Change of setting	0	-	-	-	-	-	-
From other setting > Death	0	-	-	-	-	-	-
From other setting > Other	0	-	-	-	-	-	-
Other > No further care	0	-	-	-	-	-	-
Other > Change of setting	0	-	-	-	-	-	-
Other > Death	0	-	-	-	-	-	-
Other > Other	0	-	-	-	-	-	-
Any Review > Any Review	2	100.0	100.0	100.0	100.0	100.0	100.0
91-day review > 91-day review	2	100.0	100.0	100.0	100.0	100.0	100.0
91-day review > Other	0	-	-	-	-	-	-
Other > 91-day review	0	-	-	-	-	-	-
Other > Other	0	-	-	-	-	-	-
Any Review > Any Discharge	2	100.0	50.0	50.0	100.0	50.0	50.0
91-day review > No Further Care	2	100.0	50.0	50.0	100.0	50.0	50.0
91-day review > Change of Setting	0	-	-	-	-	-	-
91-day review > Death	0	-	-	-	-	-	-
91-day review > Discharge Other	0	-	-	-	-	-	-
Other > No Further Care	0	-	-	-	-	-	-
Other > Change of Setting	0	-	-	-	-	-	-
Other > Death	0	-	-	-	-	-	-
Other > Discharge Other	0	-	-	-	-	-	-
Explanatory Notes:							
VP	Valid Periods of Care	Start	Measure completed at Start of Period		End	Measure completed at End of Period	
N	Number of Valid Observations	-	No Valid Observations				

Table 1.2.3.3: Completion Rates of the Core Clinical and Self-Report Measures for NOCC Periods of Care Data by Ambulatory Mental Health Service Setting for all data reported to April 2005 for Children and Adolescents with all Mental Health Summary Diagnostic Groups for all Demographic Groups within Age Group for all Jurisdictions

	VP N	HoNOSCA			Consumer Self-Report		
		Start	End	Start & End	Start	End	Start & End
		%	%	%	%	%	%
Any Admission > Any Review	2973	93.6	87.5	84.0	94.7	88.4	85.6
New referral > 91-day review	2163	96.1	88.1	85.9	97.0	88.9	87.3
New referral > Other review	466	94.0	88.8	87.1	95.1	90.3	88.8
From other setting > 91-day review	115	93.0	93.0	86.1	95.7	95.7	91.3
From other setting > Other review	35	80.0	88.6	77.1	88.6	91.4	85.7
Other > 91-day review	133	78.2	76.7	65.4	78.2	76.7	65.4
Other > Other review	61	45.9	67.2	34.4	45.9	67.2	34.4
Any Admission > Any Discharge	6456	93.2	55.0	53.6	94.5	55.2	54.5
New referral > No further care	3681	95.5	57.7	57.1	96.7	57.8	57.4
New referral > Change of setting	922	91.3	67.6	65.9	92.6	68.7	67.2
New referral > Death	2	100.0	100.0	100.0	100.0	100.0	100.0
New referral > Other	1282	93.1	34.1	33.7	93.1	34.1	33.7
From other setting > No further care	370	84.1	76.5	67.6	92.2	77.3	75.4
From other setting > Change of setting	42	69.0	64.3	57.1	69.0	64.3	57.1
From other setting > Death	0	-	-	-	-	-	-
From other setting > Other	11	90.9	18.2	18.2	90.9	18.2	18.2
Other > No further care	65	75.4	35.4	27.7	75.4	35.4	27.7
Other > Change of setting	9	77.8	44.4	33.3	77.8	44.4	33.3
Other > Death	0	-	-	-	-	-	-
Other > Other	72	75.0	33.3	31.9	75.0	33.3	31.9
Any Review > Any Review	3110	88.6	83.9	77.9	89.9	85.9	80.7
91-day review > 91-day review	2235	90.1	84.8	80.4	91.0	86.5	82.6
91-day review > Other	210	86.7	86.7	76.7	89.0	90.0	81.4
Other > 91-day review	437	85.4	79.2	68.9	87.2	80.1	71.2
Other > Other	228	81.1	81.6	71.9	85.1	86.8	79.4
Any Review > Any Discharge	2799	81.6	59.0	55.3	83.0	59.5	56.4
91-day review > No Further Care	1829	82.8	60.3	56.8	84.1	60.9	57.9
91-day review > Change of Setting	145	94.5	79.3	77.9	94.5	79.3	77.9
91-day review > Death	2	100.0	-	-	100.0	-	-
91-day review > Discharge Other	180	67.2	38.3	33.3	67.2	38.3	33.3
Other > No Further Care	494	81.8	56.9	52.2	84.4	57.3	54.9
Other > Change of Setting	69	92.8	81.2	81.2	92.8	81.2	81.2
Other > Death	0	-	-	-	-	-	-
Other > Discharge Other	80	53.8	36.3	26.3	53.8	36.3	26.3
Explanatory Notes:							
VP	Valid Periods of Care	Start	Measure completed at Start of Period	End	Measure completed at End of Period		
N	Number of Valid Observations	-	No Valid Observations				

Table 1.2.4.1: HoNOSCA Change Scores for NOCC Periods of Care by Psychiatric Inpatient Mental Health Service Setting for all data reported to April 2005 for Children and Adolescents with all Mental Health Summary Diagnostic Groups for all Demographic Groups within Age Group for all Jurisdictions

	VP	Start score		End score		Change score		Effect size statistics					
		M	SD	M	SD	M	SD	CV	ρ	d	LCI	UCI	
Any Admission > Any Review	47	19.8	6.6	18.6	6.9	1.2	7.6	6.4	0.37	0.15	-0.19	0.50	
New referral > 91-day review	5	22.4	8.5	20.2	5.7	2.2	9.0	4.1	0.26	0.20	-2.04	2.43	
New referral > Other review	18	18.9	6.0	16.8	5.4	2.1	7.6	3.6	0.12	0.27	-0.73	1.26	
From other setting > 91-day review	13	18.2	5.9	20.2	8.6	-2.0	8.3	4.1	0.40	-0.23	-1.35	0.89	
From other setting > Other review	11	22.0	7.4	19.0	7.3	3.0	5.7	1.9	0.70	0.49	-1.32	2.30	
Other > 91-day review	0	-	-	-	-	-	-	-	-	-	-	-	
Other > Other review	0	-	-	-	-	-	-	-	-	-	-	-	
Any Admission > Any Discharge	641	17.8	6.8	12.3	6.7	5.5	6.6	1.2	0.52	0.83	0.41	1.25	
New referral > No further care	186	17.9	6.5	11.4	6.3	6.5	7.0	1.1	0.40	0.92	0.00	1.84	
New referral > Change of setting	270	17.5	7.2	12.4	6.8	5.1	6.6	1.3	0.56	0.76	0.16	1.36	
New referral > Death	0	-	-	-	-	-	-	-	-	-	-	-	
New referral > Other	4	16.3	4.1	10.0	5.9	6.3	8.8	1.4	-0.52	0.52	-7.24	8.28	
From other setting > No further care	42	17.7	6.3	12.5	8.0	5.2	6.0	1.1	0.67	0.86	-0.72	2.43	
From other setting > Change of setting	127	18.7	6.8	13.5	6.3	5.2	6.1	1.2	0.58	0.85	-0.04	1.74	
From other setting > Death	0	-	-	-	-	-	-	-	-	-	-	-	
From other setting > Other	1	9.0	-	9.0	-	0.0	-	-	-	-	-	-	
Other > No further care	3	17.0	5.3	10.3	4.0	6.7	2.9	0.4	0.84	1.32	-	-	
Other > Change of setting	7	17.3	6.3	14.0	6.6	3.3	8.2	2.5	0.20	0.35	-2.25	2.95	
Other > Death	0	-	-	-	-	-	-	-	-	-	-	-	
Other > Other	1	13.0	-	13.0	-	0.0	-	-	-	-	-	-	
Any Review > Any Review	48	20.3	6.0	19.7	6.0	0.7	7.4	11.1	0.23	0.09	-0.11	0.28	
91-day review > 91-day review	40	20.2	6.0	19.7	6.1	0.5	8.0	17.8	0.13	0.06	-0.10	0.21	
91-day review > Other	0	-	-	-	-	-	-	-	-	-	-	-	
Other > 91-day review	2	21.5	6.4	17.5	0.7	4.0	7.1	1.8	-1.00	0.00	-	-	
Other > Other	6	21.0	6.7	20.0	6.3	1.0	1.3	1.3	0.98	0.67	0.06	1.27	
Any Review > Any Discharge	42	15.2	6.1	13.1	6.8	2.0	5.1	2.5	0.69	0.39	-0.22	1.00	
91-day review > No Further Care	4	20.8	6.0	16.3	11.2	4.5	6.4	1.4	0.90	0.51	-5.01	6.03	
91-day review > Change of Setting	19	12.8	4.9	10.6	4.7	2.2	4.1	1.9	0.62	0.51	-0.47	1.50	
91-day review > Death	0	-	-	-	-	-	-	-	-	-	-	-	
91-day review > Discharge Other	0	-	-	-	-	-	-	-	-	-	-	-	
Other > No Further Care	0	-	-	-	-	-	-	-	-	-	-	-	
Other > Change of Setting	19	16.3	6.4	14.9	7.1	1.4	5.9	4.3	0.63	0.22	-0.40	0.85	
Other > Death	0	-	-	-	-	-	-	-	-	-	-	-	
Other > Discharge Other	0	-	-	-	-	-	-	-	-	-	-	-	
Explanatory Notes													
VP	Valid Periods of Care	M	Mean				ρ	Correlation Coefficient					
N	Valid Observations	SD	Standard Deviation				d	Unbiased Effect Size Estimator					
-	No Valid Observations	CV	Coefficient of Variation				LCI	Lower 95% Confidence Interval					
												UCI	Upper 95% Confidence Interval

Table 1.2.4.2: HoNOSCA Change Scores for NOCC Periods of Care by Community Residential Mental Health Service Setting for all data reported to April 2005 for Children and Adolescents with all Mental Health Summary Diagnostic Groups for all Demographic Groups within Age Group for all Jurisdictions

	VP	Start score		End score		Change score		Effect size statistics				
		M	SD	M	SD	M	SD	CV	ρ	d	LCI	UCI
Any Admission > Any Review	0	-	-	-	-	-	-	-	-	-	-	-
New referral > 91-day review	0	-	-	-	-	-	-	-	-	-	-	-
New referral > Other review	0	-	-	-	-	-	-	-	-	-	-	-
From other setting > 91-day review	0	-	-	-	-	-	-	-	-	-	-	-
From other setting > Other review	0	-	-	-	-	-	-	-	-	-	-	-
Other > 91-day review	0	-	-	-	-	-	-	-	-	-	-	-
Other > Other review	0	-	-	-	-	-	-	-	-	-	-	-
Any Admission > Any Discharge	2	17.0	12.7	8.0	11.3	9.0	1.4	0.2	1.00	-	-	-
New referral > No further care	1	8.0	-	-	-	8.0	-	-	-	-	-	-
New referral > Change of setting	1	26.0	-	16.0	-	10.0	-	-	-	-	-	-
New referral > Death	0	-	-	-	-	-	-	-	-	-	-	-
New referral > Other	0	-	-	-	-	-	-	-	-	-	-	-
From other setting > No further care	0	-	-	-	-	-	-	-	-	-	-	-
From other setting > Change of setting	0	-	-	-	-	-	-	-	-	-	-	-
From other setting > Death	0	-	-	-	-	-	-	-	-	-	-	-
From other setting > Other	0	-	-	-	-	-	-	-	-	-	-	-
Other > No further care	0	-	-	-	-	-	-	-	-	-	-	-
Other > Change of setting	0	-	-	-	-	-	-	-	-	-	-	-
Other > Death	0	-	-	-	-	-	-	-	-	-	-	-
Other > Other	0	-	-	-	-	-	-	-	-	-	-	-
Any Review > Any Review	2	14.0	9.9	5.0	-	9.0	9.9	1.1	-	-	-	-
91-day review > 91-day review	2	14.0	9.9	5.0	-	9.0	9.9	1.1	-	-	-	-
91-day review > Other	0	-	-	-	-	-	-	-	-	-	-	-
Other > 91-day review	0	-	-	-	-	-	-	-	-	-	-	-
Other > Other	0	-	-	-	-	-	-	-	-	-	-	-
Any Review > Any Discharge	1	25.0	-	20.0	-	5.0	-	-	-	-	-	-
91-day review > No Further Care	1	25.0	-	20.0	-	5.0	-	-	-	-	-	-
91-day review > Change of Setting	0	-	-	-	-	-	-	-	-	-	-	-
91-day review > Death	0	-	-	-	-	-	-	-	-	-	-	-
91-day review > Discharge Other	0	-	-	-	-	-	-	-	-	-	-	-
Other > No Further Care	0	-	-	-	-	-	-	-	-	-	-	-
Other > Change of Setting	0	-	-	-	-	-	-	-	-	-	-	-
Other > Death	0	-	-	-	-	-	-	-	-	-	-	-
Other > Discharge Other	0	-	-	-	-	-	-	-	-	-	-	-
Explanatory Notes												
VP	Valid Periods of Care	M	Mean				ρ	Correlation Coefficient				
N	Valid Observations	SD	Standard Deviation				d	Unbiased Effect Size Estimator				
-	No Valid Observations	CV	Coefficient of Variation				LCI	Lower 95% Confidence Interval				
							UCI	Upper 95% Confidence Interval				

Table 1.2.4.3: HoNOSCA Change Scores for NOCC Periods of Care by Ambulatory Mental Health Service Setting for all data reported to April 2005 for Children and Adolescents with all Mental Health Summary Diagnostic Groups for all Demographic Groups within Age Group for all Jurisdictions

	VP	Start score		End score		Change score		Effect size statistics				
		M	SD	M	SD	M	SD	CV	ρ	d	LCI	UCI
Any Admission > Any Review	2498	14.2	6.0	11.2	5.9	2.9	5.4	1.8	0.60	0.54	0.43	0.66
New referral > 91-day review	1858	14.1	5.9	11.0	5.8	3.2	5.4	1.7	0.58	0.59	0.45	0.73
New referral > Other review	406	14.3	5.7	12.6	6.0	1.6	4.5	2.7	0.71	0.37	0.21	0.52
From other setting > 91-day review	99	15.7	6.5	12.9	6.4	2.9	6.7	2.3	0.47	0.43	-0.13	0.99
From other setting > Other review	27	13.5	7.3	10.9	8.7	2.7	5.3	2.0	0.79	0.49	-0.51	1.49
Other > 91-day review	87	12.2	6.3	8.9	5.1	3.3	5.8	1.7	0.51	0.58	-0.12	1.27
Other > Other review	21	15.1	8.2	12.2	8.5	2.9	7.4	2.5	0.61	0.38	-0.87	1.63
Any Admission > Any Discharge	3463	12.5	6.1	8.1	6.4	4.3	5.1	1.2	0.66	0.84	0.70	0.98
New referral > No further care	2101	12.4	6.0	7.2	6.0	5.1	5.2	1.0	0.63	0.99	0.77	1.20
New referral > Change of setting	608	13.2	6.2	11.1	7.0	2.1	4.7	2.2	0.75	0.44	0.28	0.61
New referral > Death	2	10.0	8.5	6.5	3.5	3.5	4.9	1.4	1.00	-	-	-
New referral > Other	432	10.7	5.8	6.9	5.7	3.8	4.5	1.2	0.69	0.84	0.49	1.18
From other setting > No further care	250	13.9	5.8	9.6	6.2	4.4	4.8	1.1	0.68	0.91	0.38	1.44
From other setting > Change of setting	24	17.7	7.3	18.5	7.1	-0.8	2.5	3.1	0.94	-0.31	-0.61	-0.02
From other setting > Death	0	-	-	-	-	-	-	-	-	-	-	-
From other setting > Other	2	16.5	13.4	18.5	14.8	-2.0	1.4	0.7	1.00	-	-	-
Other > No further care	18	13.4	8.1	6.9	5.1	6.6	5.8	0.9	0.70	1.08	-1.96	4.11
Other > Change of setting	3	17.3	3.1	15.3	2.3	2.0	3.5	1.7	0.19	0.33	-	-
Other > Death	0	-	-	-	-	-	-	-	-	-	-	-
Other > Other	23	11.0	5.9	6.8	6.4	4.2	5.4	1.3	0.62	0.76	-0.96	2.48
Any Review > Any Review	2422	12.5	6.3	11.4	6.4	1.1	5.1	4.8	0.67	0.21	0.16	0.25
91-day review > 91-day review	1796	12.0	6.1	11.1	6.3	1.0	5.1	5.2	0.67	0.19	0.15	0.24
91-day review > Other	161	13.5	6.7	13.3	6.9	0.1	5.5	39.9	0.67	0.02	0.00	0.05
Other > 91-day review	301	13.6	6.4	11.4	6.1	2.2	5.1	2.3	0.66	0.43	0.18	0.68
Other > Other	164	14.6	6.7	13.8	7.0	0.8	5.5	6.5	0.67	0.15	0.02	0.28
Any Review > Any Discharge	1547	10.6	6.3	7.8	6.5	2.8	4.7	1.7	0.73	0.59	0.46	0.73
91-day review > No Further Care	1039	10.0	5.9	6.9	5.5	3.1	4.5	1.4	0.70	0.70	0.51	0.89
91-day review > Change of Setting	113	14.4	6.3	14.7	8.2	-0.4	6.2	17.4	0.66	-0.06	-0.12	0.01
91-day review > Death	0	-	-	-	-	-	-	-	-	-	-	-
91-day review > Discharge Other	60	12.0	9.1	9.5	9.2	2.5	4.2	1.7	0.89	0.59	-0.03	1.21
Other > No Further Care	258	10.9	6.2	7.6	5.8	3.4	4.8	1.4	0.69	0.70	0.30	1.10
Other > Change of Setting	56	12.6	7.0	11.8	7.6	0.8	3.4	4.2	0.90	0.23	0.03	0.44
Other > Death	0	-	-	-	-	-	-	-	-	-	-	-
Other > Discharge Other	21	10.4	8.1	7.3	8.9	3.1	5.0	1.6	0.83	0.61	-0.73	1.95
Explanatory Notes												
VP	Valid Periods of Care	M	Mean				ρ	Correlation Coefficient				
N	Valid Observations	SD	Standard Deviation				d	Unbiased Effect Size Estimator				
-	No Valid Observations	CV	Coefficient of Variation				LCI	Lower 95% Confidence Interval				
							UCI	Upper 95% Confidence Interval				

Episodes of Care Standard Reports

Table 1.3.1: Summary of the Nature and Volume of NOCC Episodes of Care Data by Mental Health Service Setting for all data reported to April 2005 for Children and Adolescents with all Mental Health Summary Diagnostic Groups for all Demographic Groups within Age Group for all Jurisdictions

	Overall Collection Occasions		Valid Sequences		Valid Episodes	
	N	%	N	%	N	%
<i>Psychiatric Inpatient</i>	4942	100.0	1841	100.0	996	100.0
Any Admission > Any Review	68	1.4	23	1.2	23	2.3
Single CO: Admission Only	631	12.8	631	34.3	0	-
Any Admission > Any Discharge	1954	39.5	957	52.0	957	96.1
Any Review > Any Review	9	0.2	2	0.1	2	0.2
Single CO: Review Only	20	0.4	20	1.1	0	-
Any Review > Any Discharge	38	0.8	14	0.8	14	1.4
Single CO: Discharge Only	194	3.9	194	10.5	0	-
Invalid CO Sequence	2028	41.0	0	-	0	-
<i>Community Residential</i>	188	100.0	97	100.0	10	100.0
Any Admission > Any Review	0	-	0	-	0	-
Single CO: Admission Only	52	27.7	52	53.6	0	-
Any Admission > Any Discharge	12	6.4	6	6.2	6	60.0
Any Review > Any Review	4	2.1	2	2.1	2	20.0
Single CO: Review Only	14	7.4	14	14.4	0	-
Any Review > Any Discharge	4	2.1	2	2.1	2	20.0
Single CO: Discharge Only	21	11.2	21	21.6	0	-
Invalid CO Sequence	81	43.1	0	-	0	-
<i>Ambulatory</i>	49496	100.0	29380	100.0	11614	100.0
Any Admission > Any Review	4072	8.2	1653	5.6	1653	14.2
Single CO: Admission Only	10604	21.4	10604	36.1	0	-
Any Admission > Any Discharge	17343	35.0	7776	26.5	7776	67.0
Any Review > Any Review	1904	3.8	706	2.4	706	6.1
Single CO: Review Only	1462	3.0	1462	5.0	0	-
Any Review > Any Discharge	3633	7.3	1479	5.0	1479	12.7
Single CO: Discharge Only	5700	11.5	5700	19.4	0	-
Invalid CO Sequence	4778	9.7	0	-	0	-
<i>Explanatory Notes</i>						
N	Number of Valid Observations					
Valid Sequences	A set of Collection Occasions that is valid in terms of the ordering of reason for collection and the date of collection					
Valid Episodes	A valid sequence with at least 2 Collection Occasions where changes over time can be measured					
x > y	First Collection Occasion > Last Collection Occasion					

Table 1.3.2.1: Distribution of Elapsed Days from Episode Start to Episode End for NOCC Episodes of Care by Psychiatric Inpatient Mental Health Service Setting for all data reported to April 2005 for Children and Adolescents with all Mental Health Summary Diagnostic Groups for all Demographic Groups within Age Group for all Jurisdictions

	N	M	SD	CV	P10	P25	P50	P75	P90
Any Admission > Any Review	23	114.4	110.2	0.96	1	35	92	148	332
New referral > 91-day review	4	141.3	122.6	0.87	37	51	105	268	-
New referral > Other review	7	42.9	36.1	0.84	-	2	45	58	-
From other setting > 91-day review	6	216.2	132.5	0.61	27	85	228	349	-
From other setting > Other review	5	93.6	51.6	0.55	19	42	118	134	-
Other > 91-day review	0	-	-	-	-	-	-	-	-
Other > Other review	1	1.0	-	-	1	1	1	1	1
Any Admission > Any Discharge	957	20.6	33.3	1.62	1	4	9	23	52
New referral > No further care	265	15.1	20.5	1.36	1	3	8	18	43
New referral > Change of setting	411	20.0	31.7	1.59	1	3	8	23	49
New referral > Death	0	-	-	-	-	-	-	-	-
New referral > Other	21	6.3	9.2	1.45	-	1	4	7	16
From other setting > No further care	58	19.4	23.6	1.21	1	4	10	25	63
From other setting > Change of setting	175	30.1	42.7	1.42	2	7	16	35	73
From other setting > Death	0	-	-	-	-	-	-	-	-
From other setting > Other	6	12.7	18.8	1.49	-	1	4	27	-
Other > No further care	3	19.7	10.7	0.54	8	8	22	-	-
Other > Change of setting	10	66.7	121.6	1.82	0	3	28	67	371
Other > Death	0	-	-	-	-	-	-	-	-
Other > Other	8	13.5	13.8	1.02	-	5	7	30	-
Any Review > Any Review	2	207.0	291.3	1.41	1	1	207	-	-
91-day review > 91-day review	2	207.0	291.3	1.41	1	1	207	-	-
91-day review > Other	0	-	-	-	-	-	-	-	-
Other > 91-day review	0	-	-	-	-	-	-	-	-
Other > Other	0	-	-	-	-	-	-	-	-
Any Review > Any Discharge	14	85.4	74.4	0.87	4	27	76	121	220
91-day review > No Further Care	1	165.0	-	-	165	165	165	165	165
91-day review > Change of Setting	10	98.6	73.1	0.74	19	49	92	121	262
91-day review > Death	0	-	-	-	-	-	-	-	-
91-day review > Discharge Other	0	-	-	-	-	-	-	-	-
Other > No Further Care	1	2.0	-	-	2	2	2	2	2
Other > Change of Setting	2	21.0	21.2	1.01	6	6	21	-	-
Other > Death	0	-	-	-	-	-	-	-	-
Other > Discharge Other	0	-	-	-	-	-	-	-	-
Explanatory Notes:									
N	Number of Valid Observations	M	Mean	CV	Coefficient of Variation				
-	No Valid Observations	SD	Standard Deviation	Pnn	nn th percentiles				

Table 1.3.2.2: Distribution of Elapsed Days from Episode Start to Episode End for NOCC Episodes of Care by Community Residential Mental Health Service Setting for all data reported to April 2005 for Children and Adolescents with all Mental Health Summary Diagnostic Groups for all Demographic Groups within Age Group for all Jurisdictions

	N	M	SD	CV	P10	P25	P50	P75	P90
Any Admission > Any Review	0	-	-	-	-	-	-	-	-
New referral > 91-day review	0	-	-	-	-	-	-	-	-
New referral > Other review	0	-	-	-	-	-	-	-	-
From other setting > 91-day review	0	-	-	-	-	-	-	-	-
From other setting > Other review	0	-	-	-	-	-	-	-	-
Other > 91-day review	0	-	-	-	-	-	-	-	-
Other > Other review	0	-	-	-	-	-	-	-	-
Any Admission > Any Discharge	6	65.7	83.3	1.27	5	8	39	115	-
New referral > No further care	2	143.5	113.8	0.79	63	63	144	-	-
New referral > Change of setting	2	41.5	51.6	1.24	5	5	42	-	-
New referral > Death	0	-	-	-	-	-	-	-	-
New referral > Other	2	12.0	4.2	0.35	9	9	12	-	-
From other setting > No further care	0	-	-	-	-	-	-	-	-
From other setting > Change of setting	0	-	-	-	-	-	-	-	-
From other setting > Death	0	-	-	-	-	-	-	-	-
From other setting > Other	0	-	-	-	-	-	-	-	-
Other > No further care	0	-	-	-	-	-	-	-	-
Other > Change of setting	0	-	-	-	-	-	-	-	-
Other > Death	0	-	-	-	-	-	-	-	-
Other > Other	0	-	-	-	-	-	-	-	-
Any Review > Any Review	2	132.0	77.8	0.59	77	77	132	-	-
91-day review > 91-day review	2	132.0	77.8	0.59	77	77	132	-	-
91-day review > Other	0	-	-	-	-	-	-	-	-
Other > 91-day review	0	-	-	-	-	-	-	-	-
Other > Other	0	-	-	-	-	-	-	-	-
Any Review > Any Discharge	2	94.5	55.9	0.59	55	55	95	-	-
91-day review > No Further Care	2	94.5	55.9	0.59	55	55	95	-	-
91-day review > Change of Setting	0	-	-	-	-	-	-	-	-
91-day review > Death	0	-	-	-	-	-	-	-	-
91-day review > Discharge Other	0	-	-	-	-	-	-	-	-
Other > No Further Care	0	-	-	-	-	-	-	-	-
Other > Change of Setting	0	-	-	-	-	-	-	-	-
Other > Death	0	-	-	-	-	-	-	-	-
Other > Discharge Other	0	-	-	-	-	-	-	-	-
Explanatory Notes:									
N	Number of Valid Observations	M	Mean	CV	Coefficient of Variation				
-	No Valid Observations	SD	Standard Deviation	Pnn	nn th percentiles				

Table 1.3.2.3: Distribution of Elapsed Days from Episode Start to Episode End for NOCC Episodes of Care by Ambulatory Mental Health Service Setting for all data reported to April 2005 for Children and Adolescents with all Mental Health Summary Diagnostic Groups for all Demographic Groups within Age Group for all Jurisdictions

	N	M	SD	CV	P10	P25	P50	P75	P90
Any Admission > Any Review	1653	159.2	101.2	0.64	68	91	125	202	301
New referral > 91-day review	1135	165.4	99.9	0.60	83	93	128	205	308
New referral > Other review	302	134.8	104.2	0.77	22	55	114	191	274
From other setting > 91-day review	67	166.5	109.3	0.66	43	91	153	215	284
From other setting > Other review	26	132.5	88.3	0.67	13	74	107	195	261
Other > 91-day review	92	177.4	92.9	0.52	91	97	175	225	303
Other > Other review	31	123.3	89.8	0.73	40	86	91	161	230
Any Admission > Any Discharge	7776	119.3	104.1	0.87	13	46	93	165	254
New referral > No further care	4731	132.9	107.0	0.81	28	58	104	178	269
New referral > Change of setting	1010	123.2	116.5	0.95	7	41	88	178	281
New referral > Death	2	103.5	7.8	0.08	98	98	104	-	-
New referral > Other	1336	77.2	76.8	0.99	-	10	58	119	190
From other setting > No further care	416	100.0	71.9	0.72	18	49	91	134	188
From other setting > Change of setting	51	60.8	82.7	1.36	-	2	20	83	220
From other setting > Death	0	-	-	-	-	-	-	-	-
From other setting > Other	13	98.3	99.7	1.01	-	5	68	172	273
Other > No further care	91	104.1	113.2	1.09	-	6	73	149	268
Other > Change of setting	11	55.5	70.3	1.26	-	20	24	78	215
Other > Death	0	-	-	-	-	-	-	-	-
Other > Other	115	129.3	90.5	0.70	32	59	113	172	257
Any Review > Any Review	706	185.9	120.7	0.65	63	97	154	258	368
91-day review > 91-day review	412	221.3	121.4	0.55	84	119	203	296	401
91-day review > Other	28	185.9	119.9	0.65	39	90	167	262	350
Other > 91-day review	201	137.6	97.3	0.71	67	92	105	139	251
Other > Other	65	111.0	95.9	0.86	7	33	92	160	235
Any Review > Any Discharge	1479	143.9	117.4	0.82	19	57	112	203	312
91-day review > No Further Care	802	164.7	119.5	0.73	38	78	133	232	339
91-day review > Change of Setting	85	137.9	98.9	0.72	28	64	115	197	273
91-day review > Death	2	284.0	104.7	0.37	210	210	284	-	-
91-day review > Discharge Other	96	103.6	73.0	0.70	11	49	99	138	192
Other > No Further Care	399	130.2	123.1	0.95	11	37	99	172	316
Other > Change of Setting	30	87.2	77.6	0.89	1	31	64	117	219
Other > Death	0	-	-	-	-	-	-	-	-
Other > Discharge Other	65	60.6	60.1	0.99	-	-	51	100	131
Explanatory Notes:									
N	Number of Valid Observations	M	Mean	CV	Coefficient of Variation				
-	No Valid Observations	SD	Standard Deviation	Pnn	nn th percentiles				

Table 1.3.3.1: Completion Rates of the Core Clinical and Self-Report Measures for NOCC Episodes of Care Data by Psychiatric Inpatient Mental Health Service Setting for all data reported to April 2005 for Children and Adolescents with all Mental Health Summary Diagnostic Groups for all Demographic Groups within Age Group for all Jurisdictions

	VE	HoNOSCA			Consumer Self-Report		
		Start	End	Start & End	Start	End	Start & End
		%	%	%	%	%	%
Any Admission > Any Review	23	87.0	82.6	78.3	91.3	82.6	82.6
New referral > 91-day review	4	75.0	100.0	75.0	100.0	100.0	100.0
New referral > Other review	7	85.7	71.4	71.4	85.7	71.4	71.4
From other setting > 91-day review	6	100.0	100.0	100.0	100.0	100.0	100.0
From other setting > Other review	5	100.0	80.0	80.0	100.0	80.0	80.0
Other > 91-day review	0	-	-	-	-	-	-
Other > Other review	1	-	-	-	-	-	-
Any Admission > Any Discharge	957	87.8	74.6	70.0	89.9	75.5	72.5
New referral > No further care	265	93.2	75.5	70.9	95.8	76.2	74.0
New referral > Change of setting	411	85.6	73.7	68.9	88.3	75.4	72.5
New referral > Death	0	-	-	-	-	-	-
New referral > Other	21	47.6	33.3	19.0	47.6	33.3	19.0
From other setting > No further care	58	96.6	75.9	74.1	96.6	75.9	74.1
From other setting > Change of setting	175	90.9	84.0	80.0	92.0	84.0	80.6
From other setting > Death	0	-	-	-	-	-	-
From other setting > Other	6	66.7	16.7	16.7	66.7	16.7	16.7
Other > No further care	3	100.0	100.0	100.0	100.0	100.0	100.0
Other > Change of setting	10	80.0	80.0	70.0	80.0	80.0	70.0
Other > Death	0	-	-	-	-	-	-
Other > Other	8	12.5	12.5	12.5	12.5	12.5	12.5
Any Review > Any Review	2	100.0	100.0	100.0	100.0	100.0	100.0
91-day review > 91-day review	2	100.0	100.0	100.0	100.0	100.0	100.0
91-day review > Other	0	-	-	-	-	-	-
Other > 91-day review	0	-	-	-	-	-	-
Other > Other	0	-	-	-	-	-	-
Any Review > Any Discharge	14	78.6	85.7	78.6	78.6	85.7	78.6
91-day review > No Further Care	1	-	-	-	-	-	-
91-day review > Change of Setting	10	100.0	100.0	100.0	100.0	100.0	100.0
91-day review > Death	0	-	-	-	-	-	-
91-day review > Discharge Other	0	-	-	-	-	-	-
Other > No Further Care	1	-	100.0	-	-	100.0	-
Other > Change of Setting	2	50.0	50.0	50.0	50.0	50.0	50.0
Other > Death	0	-	-	-	-	-	-
Other > Discharge Other	0	-	-	-	-	-	-
Explanatory Notes:							
VE	Valid Episodes	Start	Measure completed at Start of Episode		End	Measure completed at End of Episode	
N	Number of Valid Observations	-	No Valid Observations				

Table 1.3.3.2: Completion Rates of the Core Clinical and Self-Report Measures for NOCC Episodes of Care Data by Community Residential Mental Health Service Setting for all data reported to April 2005 for Children and Adolescents with all Mental Health Summary Diagnostic Groups for all Demographic Groups within Age Group for all Jurisdictions

	VE	HoNOSCA			Consumer Self-Report		
		Start	End	Start & End	Start	End	Start & End
		N	%	%	%	%	%
Any Admission > Any Review	0	-	-	-	-	-	-
New referral > 91-day review	0	-	-	-	-	-	-
New referral > Other review	0	-	-	-	-	-	-
From other setting > 91-day review	0	-	-	-	-	-	-
From other setting > Other review	0	-	-	-	-	-	-
Other > 91-day review	0	-	-	-	-	-	-
Other > Other review	0	-	-	-	-	-	-
Any Admission > Any Discharge	6	66.7	33.3	33.3	66.7	33.3	33.3
New referral > No further care	2	100.0	50.0	50.0	100.0	50.0	50.0
New referral > Change of setting	2	50.0	50.0	50.0	50.0	50.0	50.0
New referral > Death	0	-	-	-	-	-	-
New referral > Other	2	50.0	-	-	50.0	-	-
From other setting > No further care	0	-	-	-	-	-	-
From other setting > Change of setting	0	-	-	-	-	-	-
From other setting > Death	0	-	-	-	-	-	-
From other setting > Other	0	-	-	-	-	-	-
Other > No further care	0	-	-	-	-	-	-
Other > Change of setting	0	-	-	-	-	-	-
Other > Death	0	-	-	-	-	-	-
Other > Other	0	-	-	-	-	-	-
Any Review > Any Review	2	100.0	100.0	100.0	100.0	100.0	100.0
91-day review > 91-day review	2	100.0	100.0	100.0	100.0	100.0	100.0
91-day review > Other	0	-	-	-	-	-	-
Other > 91-day review	0	-	-	-	-	-	-
Other > Other	0	-	-	-	-	-	-
Any Review > Any Discharge	2	100.0	50.0	50.0	100.0	50.0	50.0
91-day review > No Further Care	2	100.0	50.0	50.0	100.0	50.0	50.0
91-day review > Change of Setting	0	-	-	-	-	-	-
91-day review > Death	0	-	-	-	-	-	-
91-day review > Discharge Other	0	-	-	-	-	-	-
Other > No Further Care	0	-	-	-	-	-	-
Other > Change of Setting	0	-	-	-	-	-	-
Other > Death	0	-	-	-	-	-	-
Other > Discharge Other	0	-	-	-	-	-	-
Explanatory Notes:							
VE	Valid Episodes	Start	Measure completed at Start of Episode		End	Measure completed at End of Episode	
N	Number of Valid Observations	-	No Valid Observations				

Table 1.3.3.3: Completion Rates of the Core Clinical and Self-Report Measures for NOCC Episodes of Care Data by Ambulatory Mental Health Service Setting for all data reported to April 2005 for Children and Adolescents with all Mental Health Summary Diagnostic Groups for all Demographic Groups within Age Group for all Jurisdictions

	VE	HoNOSCA			Consumer Self-Report		
		Start	End	Start & End	Start	End	Start & End
		%	%	%	%	%	%
Any Admission > Any Review	1653	92.6	88.6	83.8	93.8	89.9	86.0
New referral > 91-day review	1135	94.8	88.8	85.5	96.1	89.8	87.5
New referral > Other review	302	94.0	90.7	88.4	94.7	93.0	90.7
From other setting > 91-day review	67	94.0	89.6	85.1	95.5	94.0	89.6
From other setting > Other review	26	80.8	80.8	73.1	88.5	84.6	80.8
Other > 91-day review	92	80.4	82.6	68.5	80.4	82.6	68.5
Other > Other review	31	38.7	80.6	32.3	38.7	80.6	32.3
Any Admission > Any Discharge	7776	93.5	55.7	54.3	94.7	56.1	55.2
New referral > No further care	4731	95.9	58.1	57.5	97.0	58.4	57.9
New referral > Change of setting	1010	91.9	69.3	67.8	93.1	70.3	69.0
New referral > Death	2	100.0	100.0	100.0	100.0	100.0	100.0
New referral > Other	1336	93.0	33.7	33.3	93.0	33.7	33.3
From other setting > No further care	416	84.4	74.3	64.9	92.3	75.0	72.6
From other setting > Change of setting	51	74.5	66.7	60.8	74.5	66.7	60.8
From other setting > Death	0	-	-	-	-	-	-
From other setting > Other	13	92.3	15.4	15.4	92.3	15.4	15.4
Other > No further care	91	76.9	42.9	33.0	76.9	42.9	33.0
Other > Change of setting	11	81.8	36.4	27.3	81.8	36.4	27.3
Other > Death	0	-	-	-	-	-	-
Other > Other	115	67.0	39.1	31.3	67.0	39.1	31.3
Any Review > Any Review	706	88.4	85.6	78.3	89.9	87.8	81.7
91-day review > 91-day review	412	92.7	90.5	86.4	93.9	93.0	89.6
91-day review > Other	28	82.1	82.1	64.3	85.7	89.3	75.0
Other > 91-day review	201	85.6	77.6	67.2	87.1	78.1	69.2
Other > Other	65	72.3	80.0	67.7	75.4	84.6	73.8
Any Review > Any Discharge	1479	86.1	58.6	55.1	87.3	59.0	56.2
91-day review > No Further Care	802	90.4	63.2	60.6	91.3	63.8	61.3
91-day review > Change of Setting	85	95.3	76.5	75.3	95.3	76.5	75.3
91-day review > Death	2	100.0	-	-	100.0	-	-
91-day review > Discharge Other	96	77.1	40.6	35.4	77.1	40.6	35.4
Other > No Further Care	399	81.7	52.1	47.1	84.5	52.4	49.6
Other > Change of Setting	30	86.7	73.3	73.3	86.7	73.3	73.3
Other > Death	0	-	-	-	-	-	-
Other > Discharge Other	65	60.0	38.5	32.3	60.0	38.5	32.3
Explanatory Notes:							
VE	Valid Episodes	Start	Measure completed at Start of Episode		End	Measure completed at End of Episode	
N	Number of Valid Observations	-	No Valid Observations				

Table 1.3.4.1: HoNOSCA Change Scores for NOCC Episodes of Care by Psychiatric Inpatient Mental Health Service Setting for all data reported to April 2005 for Children and Adolescents with all Mental Health Summary Diagnostic Groups for all Demographic Groups within Age Group for all Jurisdictions

	VE	Start score		End score		Change score		Effect size statistics				
		M	SD	M	SD	M	SD	CV	ρ	d	LCI	UCI
Any Admission > Any Review	18	22.2	6.8	21.8	5.5	0.3	7.3	21.9	0.30	0.04	-0.16	0.25
New referral > 91-day review	3	26.7	8.5	21.7	4.6	5.0	8.2	1.6	0.34	0.35	-	-
New referral > Other review	5	21.4	8.8	18.8	1.9	2.6	8.0	3.1	0.51	0.26	-2.34	2.86
From other setting > 91-day review	6	19.5	4.3	26.3	5.0	-6.8	1.2	0.2	0.98	-4.92	-8.59	-1.25
From other setting > Other review	4	23.8	6.1	19.0	6.6	4.8	3.1	0.7	0.88	1.12	-4.56	6.79
Other > 91-day review	0	-	-	-	-	-	-	-	-	-	-	-
Other > Other review	0	-	-	-	-	-	-	-	-	-	-	-
Any Admission > Any Discharge	670	17.8	6.8	12.4	6.7	5.4	6.7	1.2	0.51	0.81	0.40	1.21
New referral > No further care	188	17.9	6.4	11.5	6.4	6.4	7.1	1.1	0.39	0.90	-0.01	1.81
New referral > Change of setting	283	17.5	7.1	12.5	6.8	5.0	6.7	1.3	0.53	0.75	0.16	1.33
New referral > Death	0	-	-	-	-	-	-	-	-	-	-	-
New referral > Other	4	16.3	4.1	10.0	5.9	6.3	8.8	1.4	-0.52	0.52	-7.24	8.28
From other setting > No further care	43	17.5	6.3	12.8	8.2	4.8	6.7	1.4	0.60	0.70	-0.72	2.12
From other setting > Change of setting	140	18.8	6.9	13.6	6.3	5.2	6.0	1.2	0.59	0.86	0.02	1.71
From other setting > Death	0	-	-	-	-	-	-	-	-	-	-	-
From other setting > Other	1	9.0	-	9.0	-	0	-	-	-	-	-	-
Other > No further care	3	17.0	5.3	10.3	4.0	6.7	2.9	0.4	0.84	1.32	-	-
Other > Change of setting	7	17.3	6.3	14.0	6.6	3.3	8.2	2.5	0.20	0.35	-2.25	2.95
Other > Death	0	-	-	-	-	-	-	-	-	-	-	-
Other > Other	1	13.0	-	13.0	-	0	-	-	-	-	-	-
Any Review > Any Review	2	18.5	2.1	21.0	8.5	-2.5	6.4	2.5	1.00	-	-	-
91-day review > 91-day review	2	18.5	2.1	21.0	8.5	-2.5	6.4	2.5	1.00	-	-	-
91-day review > Other	0	-	-	-	-	-	-	-	-	-	-	-
Other > 91-day review	0	-	-	-	-	-	-	-	-	-	-	-
Other > Other	0	-	-	-	-	-	-	-	-	-	-	-
Any Review > Any Discharge	11	13.4	5.8	10.6	5.6	2.7	4.5	1.6	0.70	0.57	-1.06	2.20
91-day review > No Further Care	0	-	-	-	-	-	-	-	-	-	-	-
91-day review > Change of Setting	10	12.9	5.9	9.9	5.3	3.0	4.6	1.5	0.67	0.60	-1.29	2.49
91-day review > Death	0	-	-	-	-	-	-	-	-	-	-	-
91-day review > Discharge Other	0	-	-	-	-	-	-	-	-	-	-	-
Other > No Further Care	0	-	-	-	-	-	-	-	-	-	-	-
Other > Change of Setting	1	18.0	-	18.0	-	0	-	-	-	-	-	-
Other > Death	0	-	-	-	-	-	-	-	-	-	-	-
Other > Discharge Other	0	-	-	-	-	-	-	-	-	-	-	-
Explanatory Notes												
VE	Valid Episodes of Care	M	Mean			ρ	Correlation Coefficient					
N	Valid Observations	SD	Standard Deviation			d	Unbiased Effect Size Estimator					
-	No Valid Observations	CV	Coefficient of Variation			LCI	Lower 95% Confidence Interval					
						UCI	Upper 95% Confidence Interval					

Table 1.3.4.2: HoNOSCA Change Scores for NOCC Episodes of Care by Community Residential Mental Health Service Setting for all data reported to April 2005 for Children and Adolescents with all Mental Health Summary Diagnostic Groups for all Demographic Groups within Age Group for all Jurisdictions

	VE	Start score		End score		Change score		Effect size statistics					
		M	SD	M	SD	M	SD	CV	ρ	d	LCI	UCI	
Any Admission > Any Review	0	-	-	-	-	-	-	-	-	-	-	-	-
New referral > 91-day review	0	-	-	-	-	-	-	-	-	-	-	-	-
New referral > Other review	0	-	-	-	-	-	-	-	-	-	-	-	-
From other setting > 91-day review	0	-	-	-	-	-	-	-	-	-	-	-	-
From other setting > Other review	0	-	-	-	-	-	-	-	-	-	-	-	-
Other > 91-day review	0	-	-	-	-	-	-	-	-	-	-	-	-
Other > Other review	0	-	-	-	-	-	-	-	-	-	-	-	-
Any Admission > Any Discharge	2	17.0	12.7	8.0	11.3	9.0	1.4	0.2	1.00	-	-	-	-
New referral > No further care	1	8.0	-	-	-	8.0	-	-	-	-	-	-	-
New referral > Change of setting	1	26.0	-	16.0	-	10.0	-	-	-	-	-	-	-
New referral > Death	0	-	-	-	-	-	-	-	-	-	-	-	-
New referral > Other	0	-	-	-	-	-	-	-	-	-	-	-	-
From other setting > No further care	0	-	-	-	-	-	-	-	-	-	-	-	-
From other setting > Change of setting	0	-	-	-	-	-	-	-	-	-	-	-	-
From other setting > Death	0	-	-	-	-	-	-	-	-	-	-	-	-
From other setting > Other	0	-	-	-	-	-	-	-	-	-	-	-	-
Other > No further care	0	-	-	-	-	-	-	-	-	-	-	-	-
Other > Change of setting	0	-	-	-	-	-	-	-	-	-	-	-	-
Other > Death	0	-	-	-	-	-	-	-	-	-	-	-	-
Other > Other	0	-	-	-	-	-	-	-	-	-	-	-	-
Any Review > Any Review	2	14.0	9.9	5.0	-	9.0	9.9	1.1	-	-	-	-	-
91-day review > 91-day review	2	14.0	9.9	5.0	-	9.0	9.9	1.1	-	-	-	-	-
91-day review > Other	0	-	-	-	-	-	-	-	-	-	-	-	-
Other > 91-day review	0	-	-	-	-	-	-	-	-	-	-	-	-
Other > Other	0	-	-	-	-	-	-	-	-	-	-	-	-
Any Review > Any Discharge	1	25.0	-	20.0	-	5.0	-	-	-	-	-	-	-
91-day review > No Further Care	1	25.0	-	20.0	-	5.0	-	-	-	-	-	-	-
91-day review > Change of Setting	0	-	-	-	-	-	-	-	-	-	-	-	-
91-day review > Death	0	-	-	-	-	-	-	-	-	-	-	-	-
91-day review > Discharge Other	0	-	-	-	-	-	-	-	-	-	-	-	-
Other > No Further Care	0	-	-	-	-	-	-	-	-	-	-	-	-
Other > Change of Setting	0	-	-	-	-	-	-	-	-	-	-	-	-
Other > Death	0	-	-	-	-	-	-	-	-	-	-	-	-
Other > Discharge Other	0	-	-	-	-	-	-	-	-	-	-	-	-
Explanatory Notes													
VE	Valid Episodes of Care	M	Mean			ρ	Correlation Coefficient						
N	Valid Observations	SD	Standard Deviation			d	Unbiased Effect Size Estimator						
-	No Valid Observations	CV	Coefficient of Variation			LCI	Lower 95% Confidence Interval						
						UCI	Upper 95% Confidence Interval						

Table 1.3.4.3: HoNOSCA Change Scores for NOCC Episodes of Care by Ambulatory Mental Health Service Setting for all data reported to April 2005 for Children and Adolescents with all Mental Health Summary Diagnostic Groups for all Demographic Groups within Age Group for all Jurisdictions

	VE	Start score		End score		Change score		Effect size statistics				
		M	SD	M	SD	M	SD	CV	ρ	d	LCI	UCI
Any Admission > Any Review	1386	14.4	6.0	11.4	6.0	3.0	5.7	1.9	0.55	0.53	0.37	0.68
New referral > 91-day review	970	14.3	6.0	10.9	5.7	3.4	5.6	1.7	0.54	0.59	0.39	0.80
New referral > Other review	267	14.4	5.6	12.8	6.0	1.6	4.7	3.0	0.67	0.33	0.15	0.51
From other setting > 91-day review	57	16.4	6.2	14.4	7.2	2.0	8.1	4.1	0.29	0.24	-0.27	0.75
From other setting > Other review	19	15.1	6.5	11.3	7.7	3.8	3.9	1.0	0.86	0.94	-0.76	2.64
Other > 91-day review	63	13.2	6.4	9.0	5.1	4.1	6.0	1.5	0.47	0.68	-0.34	1.69
Other > Other review	10	18.9	9.5	15.6	10.3	3.3	10.6	3.2	0.43	0.29	-1.84	2.41
Any Admission > Any Discharge	4222	12.7	6.1	8.0	6.4	4.7	5.4	1.2	0.62	0.86	0.72	1.00
New referral > No further care	2718	12.7	6.0	7.1	5.8	5.6	5.4	1.0	0.58	1.03	0.82	1.23
New referral > Change of setting	685	13.4	6.3	11.6	7.2	1.8	4.8	2.6	0.75	0.38	0.25	0.52
New referral > Death	2	10.0	8.5	6.5	3.5	3.5	4.9	1.4	1.00	-	-	-
New referral > Other	445	10.8	5.9	6.9	5.8	3.9	4.7	1.2	0.68	0.83	0.48	1.18
From other setting > No further care	270	14.0	5.8	9.4	6.1	4.6	5.1	1.1	0.64	0.91	0.37	1.45
From other setting > Change of setting	31	16.6	6.9	17.8	7.4	-1.1	4.4	3.9	0.81	-0.25	-0.64	0.14
From other setting > Death	0	-	-	-	-	-	-	-	-	-	-	-
From other setting > Other	2	16.5	13.4	18.5	14.8	-2.0	1.4	0.7	1.00	-	-	-
Other > No further care	30	13.4	7.5	5.5	4.6	7.9	6.4	0.8	0.53	1.19	-1.63	4.01
Other > Change of setting	3	17.3	3.1	15.3	2.3	2.0	3.5	1.7	0.19	0.33	-	-
Other > Death	0	-	-	-	-	-	-	-	-	-	-	-
Other > Other	36	10.5	5.9	6.0	5.6	4.5	5.1	1.1	0.61	0.87	-0.59	2.34
Any Review > Any Review	553	13.5	6.6	12.0	6.6	1.5	5.6	3.7	0.65	0.27	0.15	0.39
91-day review > 91-day review	356	13.1	6.6	11.8	6.6	1.4	5.4	4.0	0.66	0.25	0.11	0.39
91-day review > Other	18	14.3	7.0	12.9	6.2	1.3	6.0	4.5	0.59	0.21	-0.41	0.84
Other > 91-day review	135	13.4	6.0	11.3	5.8	2.0	5.5	2.7	0.56	0.37	0.03	0.71
Other > Other	44	16.4	7.6	15.4	8.6	1.1	6.7	6.3	0.67	0.16	-0.16	0.47
Any Review > Any Discharge	815	11.7	6.6	7.9	6.7	3.8	5.3	1.4	0.68	0.73	0.47	0.99
91-day review > No Further Care	486	11.4	6.3	7.0	5.9	4.4	5.2	1.2	0.64	0.84	0.46	1.22
91-day review > Change of Setting	64	14.2	6.2	13.3	8.3	1.0	6.4	6.6	0.64	0.15	-0.09	0.39
91-day review > Death	0	-	-	-	-	-	-	-	-	-	-	-
91-day review > Discharge Other	34	13.8	10.0	10.8	10.5	3.1	4.3	1.4	0.91	0.70	-0.31	1.71
Other > No Further Care	188	11.5	6.3	7.6	5.7	3.9	5.1	1.3	0.65	0.76	0.22	1.31
Other > Change of Setting	22	11.3	7.5	9.7	7.8	1.5	4.6	3.0	0.82	0.32	-0.32	0.96
Other > Death	0	-	-	-	-	-	-	-	-	-	-	-
Other > Discharge Other	21	11.6	7.8	7.7	9.1	3.9	4.6	1.2	0.86	0.82	-0.82	2.45
Explanatory Notes												
VE	Valid Episodes of Care	M	Mean				ρ	Correlation Coefficient				
N	Valid Observations	SD	Standard Deviation				d	Unbiased Effect Size Estimator				
-	No Valid Observations	CV	Coefficient of Variation				LCI	Lower 95% Confidence Interval				
							UCI	Upper 95% Confidence Interval				